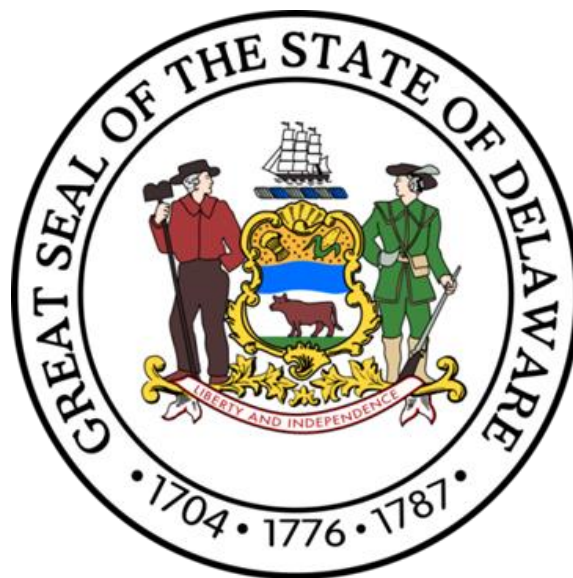


Shooting Incidents in Delaware

Mapping Supplement for the 2019 Statewide Report



September 2020

State of Delaware
Criminal Justice Council
Statistical Analysis Center
410 Federal Street, Suite 6
Dover, Delaware 19901

Shooting Incidents in Delaware 2019

Mapping Supplement for the 2019 Statewide Report

September 2020

Delaware Criminal Justice Council
Christian Kervick, Executive Director

Statistical Analysis Center
Spencer Price, Director

Authors

Eric Rager
Research Analyst
Jim Salt
Research Analyst

Overview

This document contains maps of Delaware shooting incidents for 2018 and 2019. These maps are intended to supplement the detailed information provided in the 2018 and 2019 versions of *Delaware Shootings: An Analysis of Incidents, Suspects, and Victims*. (available at <https://sac.delaware.gov/crime/>).

The maps included in this supplement cover the entire State of Delaware, New Castle, Kent, and Sussex Counties, and the cities of Wilmington and Dover. These maps distinguish between fatal and non-fatal incidents and between those with a single victim and those with multiple victims. The resolution provides enough information to determine relative incident locations without compromising victim and witness privacy issues.

Mapping Methodology

Once the final set of shooting incidents for the year was identified, complaint numbers and incident characteristic information (fatality versus non-fatality, number of victims) were extracted from the shooting database for each year. Complaint numbers were used to query location information from the Delaware Criminal Justice Information System (CJIS).

With the location information available, shooting incidents were plotted on a map of Delaware using the software ArcGIS Pro developed by ESRI. The resulting map plots were reviewed for accuracy (for locations that appear outside of Delaware indicating inaccurate location data, etc.). The shooting circumstance information (fatal/non-fatal and number of victims) was then used to categorize each incident into one of five categories: Non-Fatal/1 Victim, Non-Fatal/Multiple Victims, Fatal/1 Victim, Fatal/Others Injured, and Multiple Fatal. Each category was given a distinct mapping symbol for clarity.

Once all shooting incidents were identified and categorized, the various maps were then created and exported for inclusion into this supplement.

Limitations & Considerations

The maps in this supplement do not cover all instances where a gun was involved or where shots had been fired. Also, shooting-related injuries or deaths due to accidental or self-inflicted discharges were not included in the mapping data set. This supplement specifically examines non-accidental criminal shootings that resulted in the injury or death of another person.

Incident location data in CJIS does not always reflect the true location of an incident. In some circumstances police officers are unable to locate a physical scene and must determine the approximate location based on victim and witness statements. Due to the nature of some shootings, such as those involving drugs or gang-related activity, a victim or witness may not be forthcoming and give accurate location information. In these instances, police officers must estimate the location where the shooting most likely took place based on the totality of evidence (i.e. witness and victim statements, 911 calls, data from video cameras and other means of surveillance).

Points of Interest

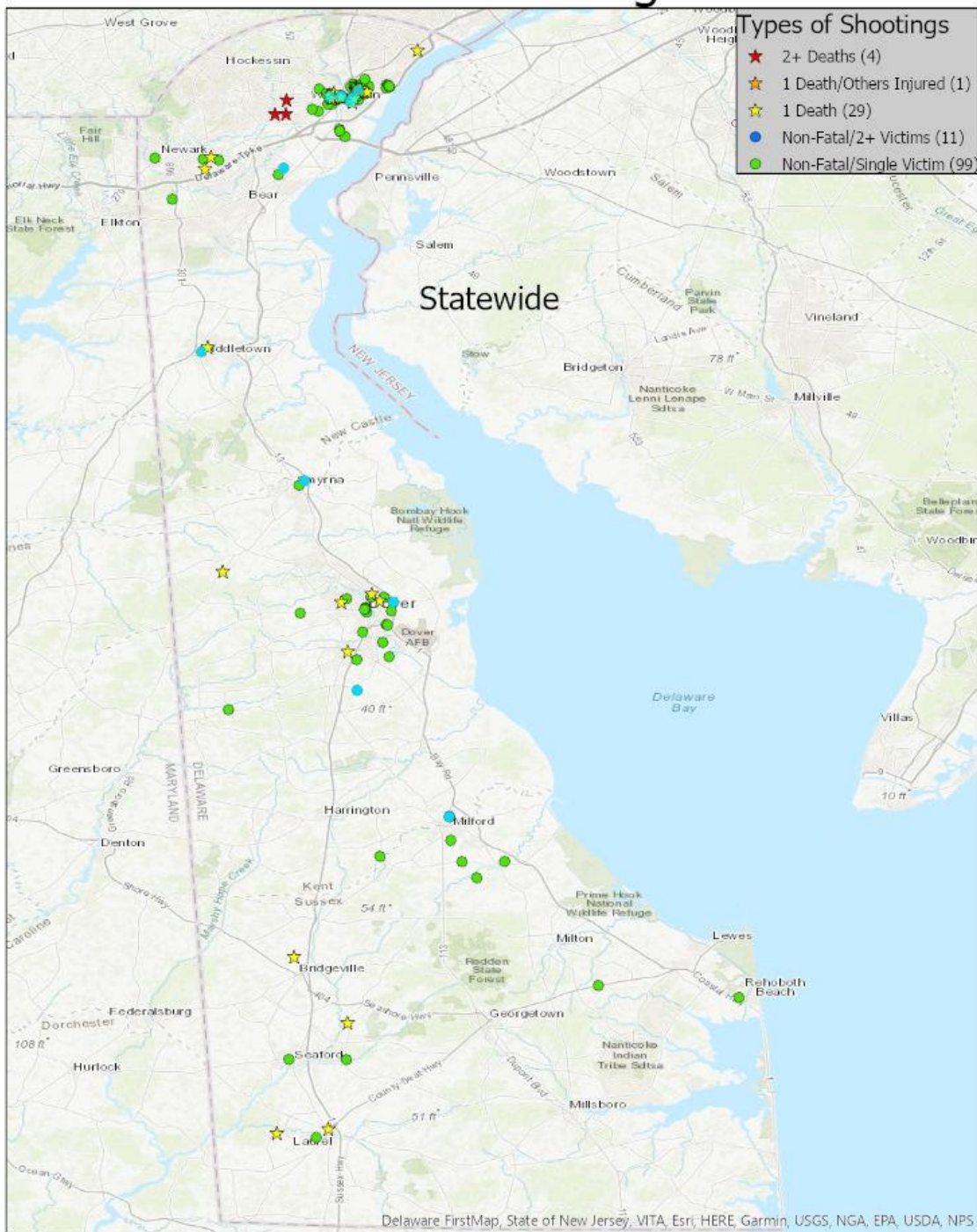
The State of Delaware had 144 shooting incidents in 2018 and 173 incidents in 2019. Wilmington also increased from 75 shooting incidents in 2018 to 94 in 2019. Shootings still tend to be roughly clustered in certain areas of the city as seen in the 2018 and 2019 maps below.

In New Castle County, Wilmington incidents continued to dominate the map. Most shootings occurred in and around Wilmington and to the west towards Elsmere. In 2019 there were more shootings along the Route 40/Pulaski Highway corridor near Bear. In 2019 there also were more shootings in the Claymont area. The Stanton area, with three multiple fatality shootings in 2018, only had one non-fatal shooting in 2019.

In Kent County, incidents continued to occur mostly inside or near the city of Dover. The Harrington area had zero shootings in 2018, but three in 2019 with two being fatal.

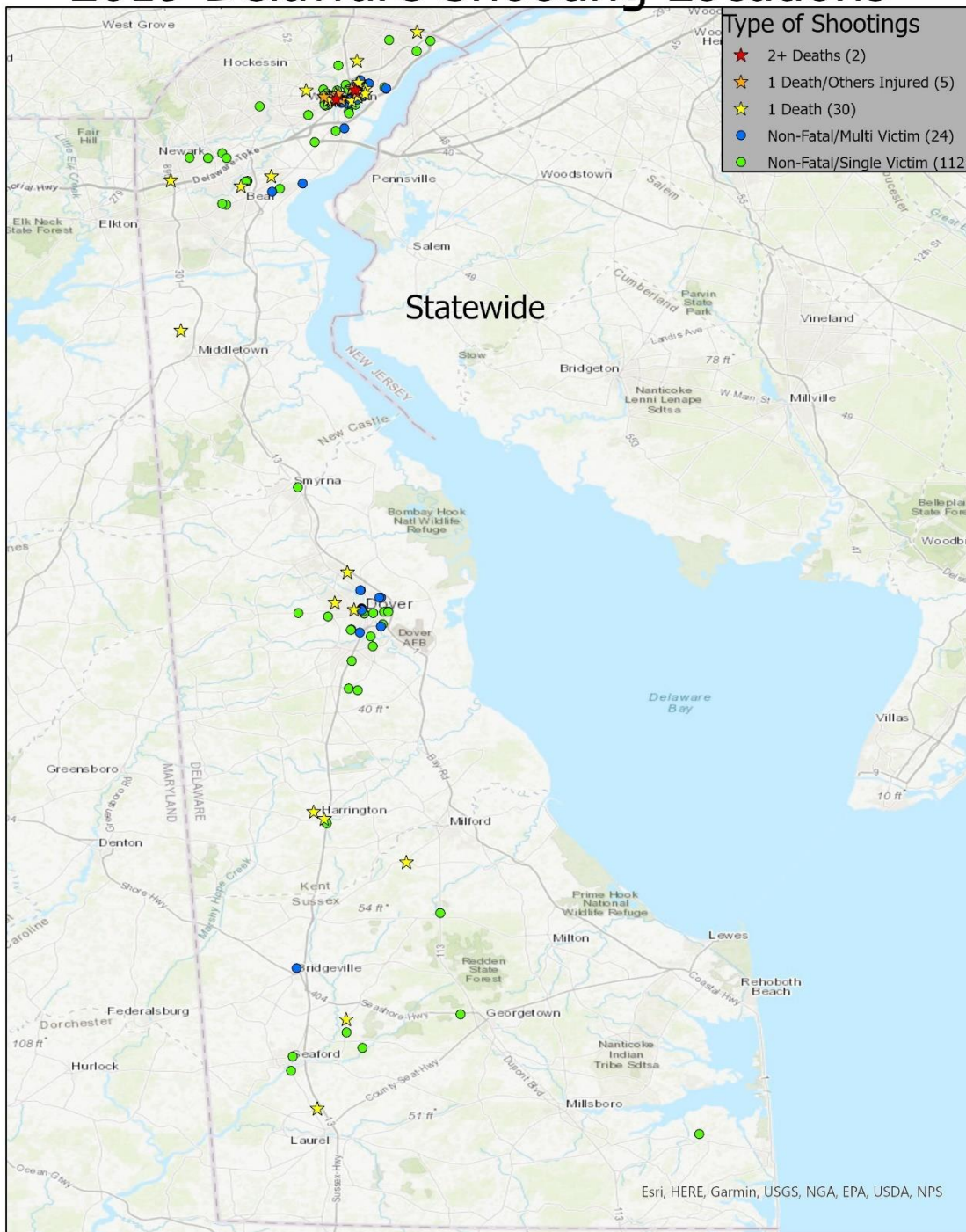
Much like Kent County, Sussex County accounted for a relatively small number of overall shootings in 2019. In 2018, the Milford-Lincoln area south of the Kent-Sussex border had a handful of non-fatal shootings, but in 2019 there was only one shooting (fatal). The few remaining Sussex County shootings roughly grouped around the Bridgeville to Laurel area, with Seaford in the center.

2018 Delaware Shooting Locations



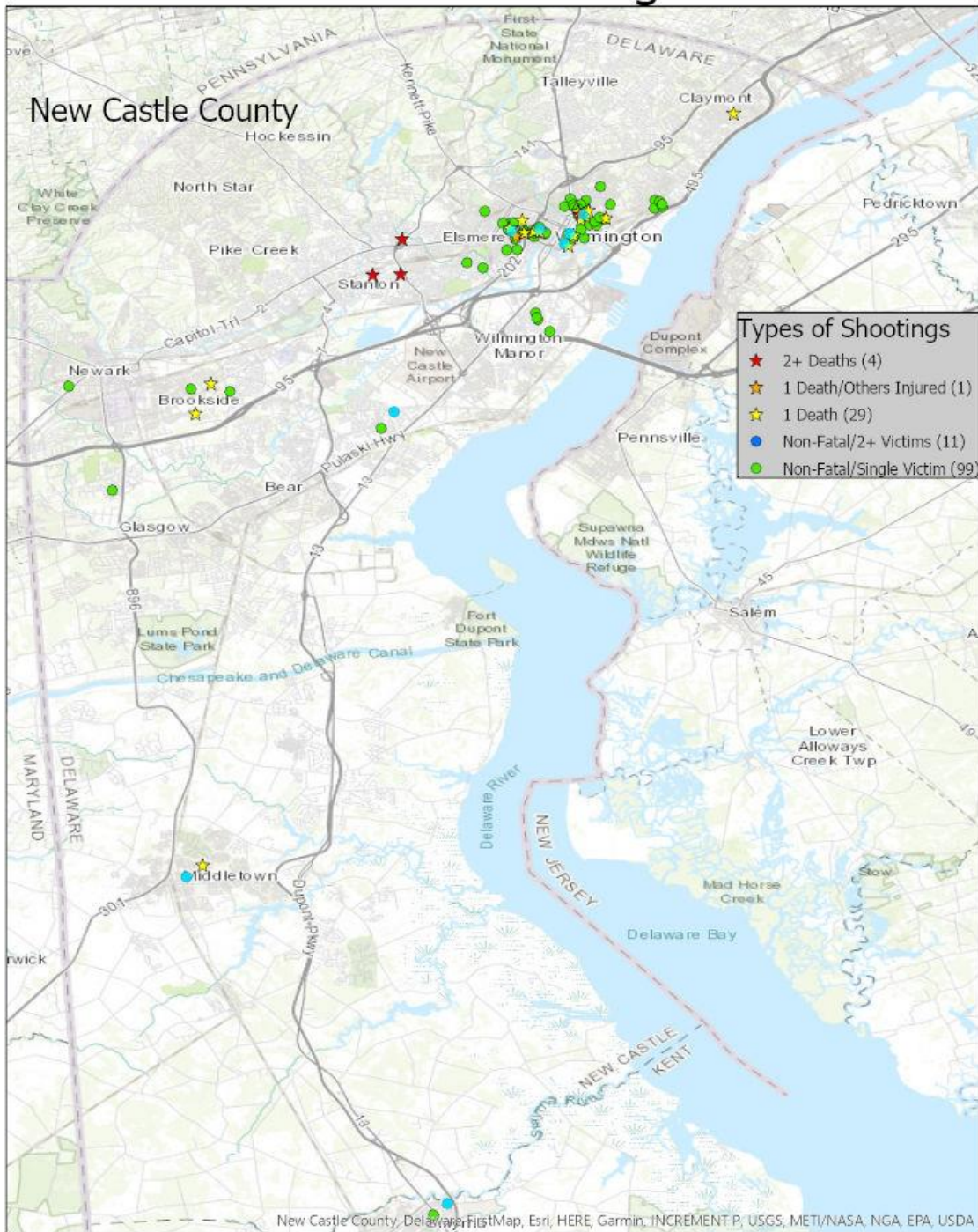
Statewide

2019 Delaware Shooting Locations



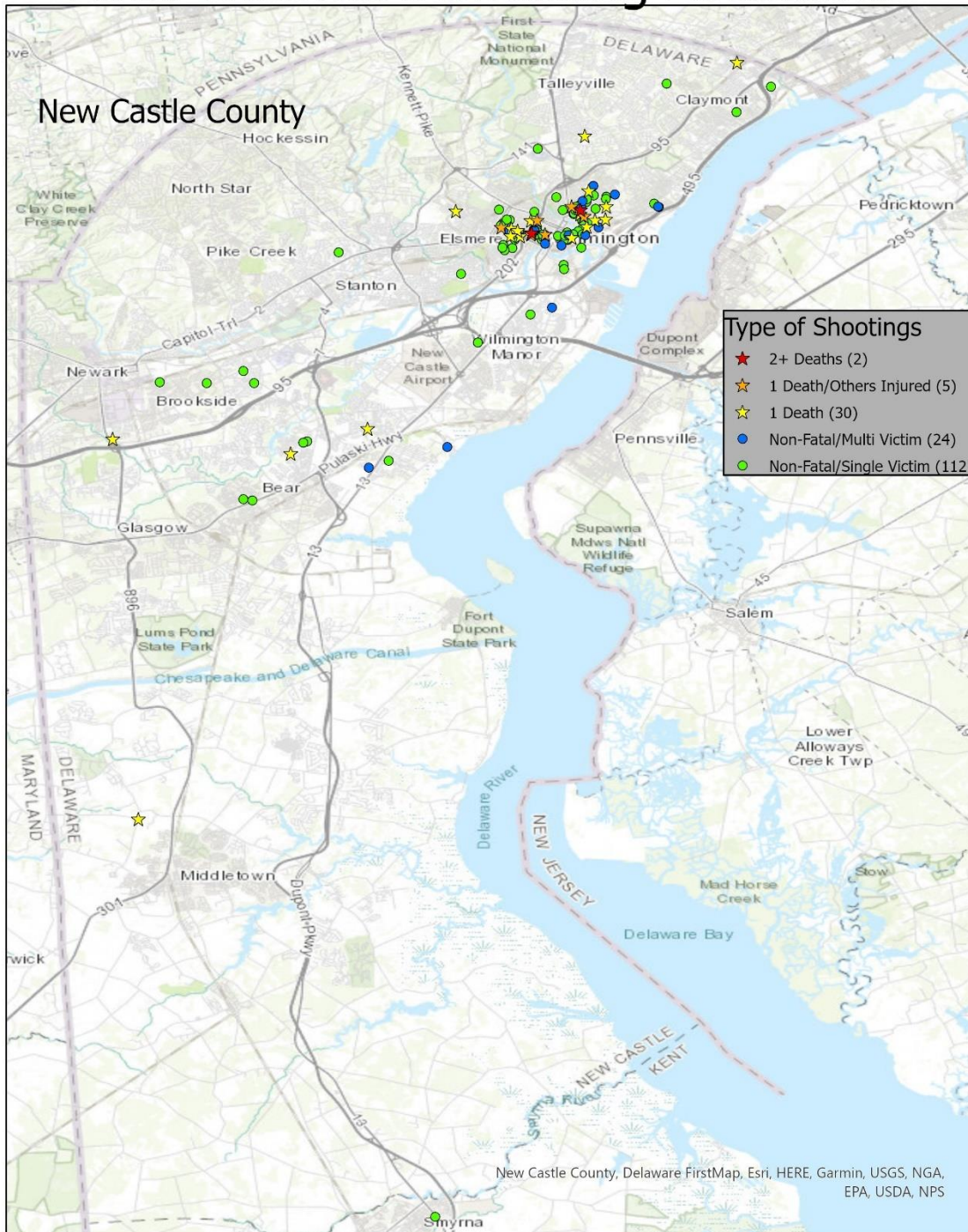
Statewide

2018 Delaware Shooting Locations



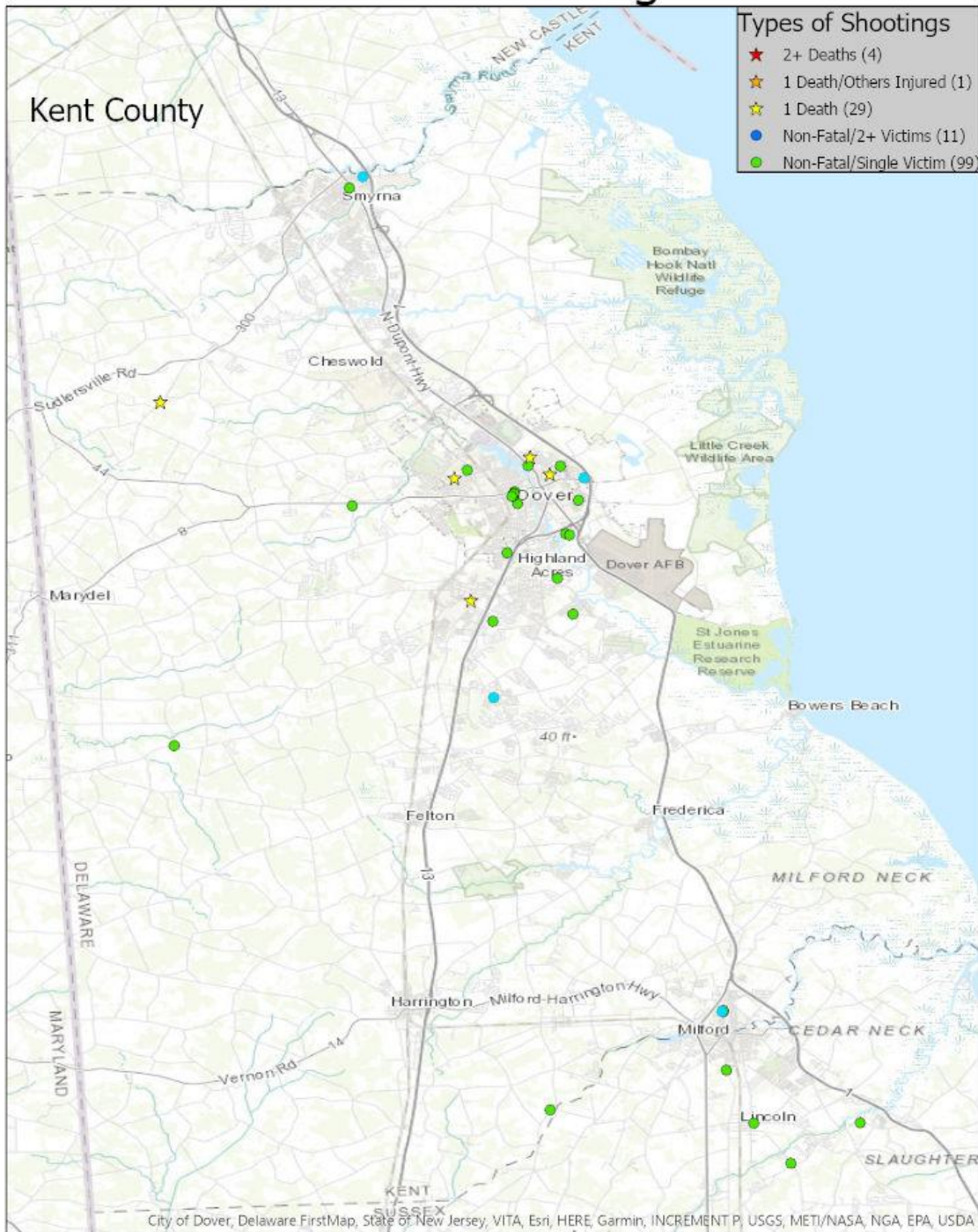
New Castle County

2019 Delaware Shooting Locations



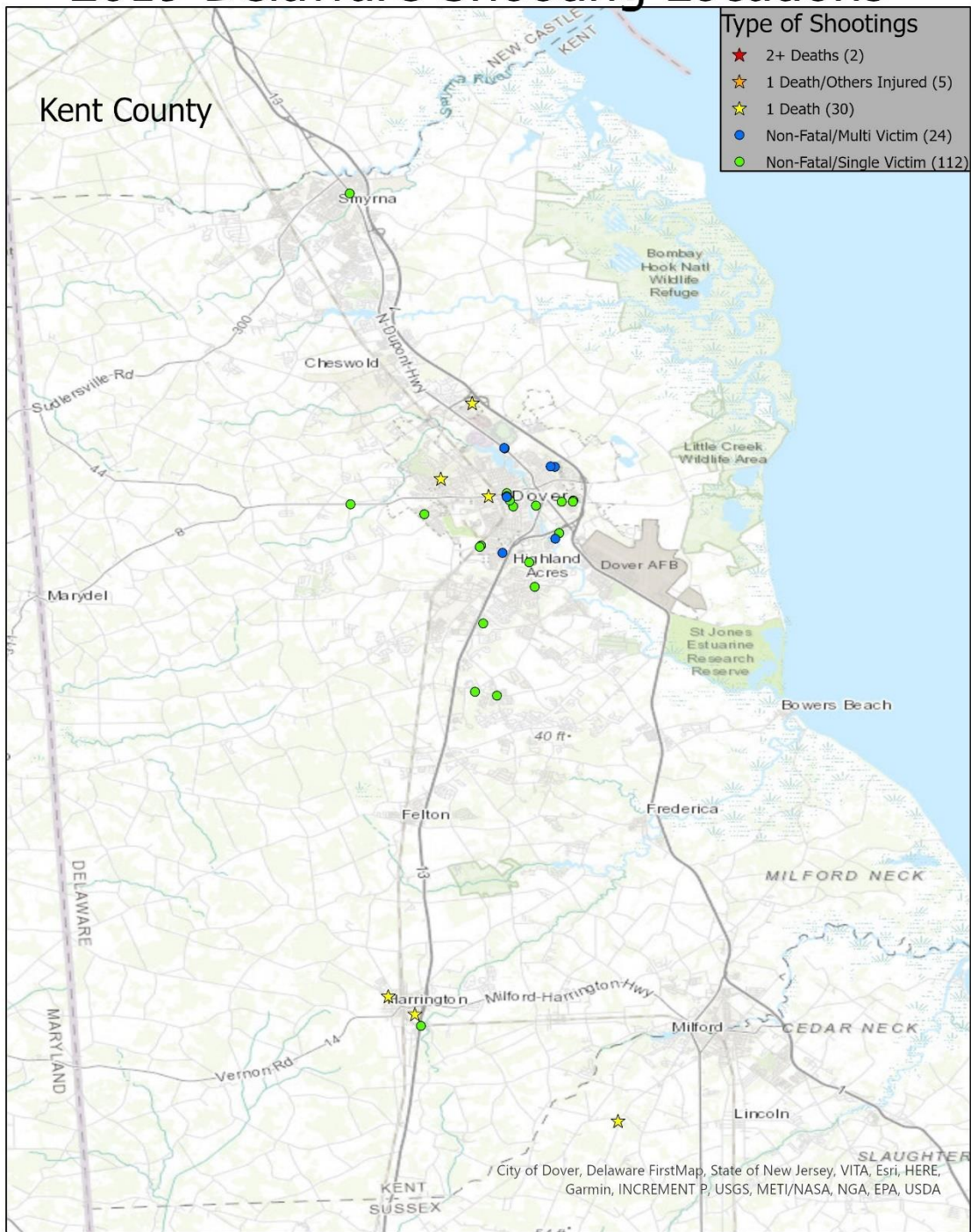
New Castle County

2018 Delaware Shooting Locations



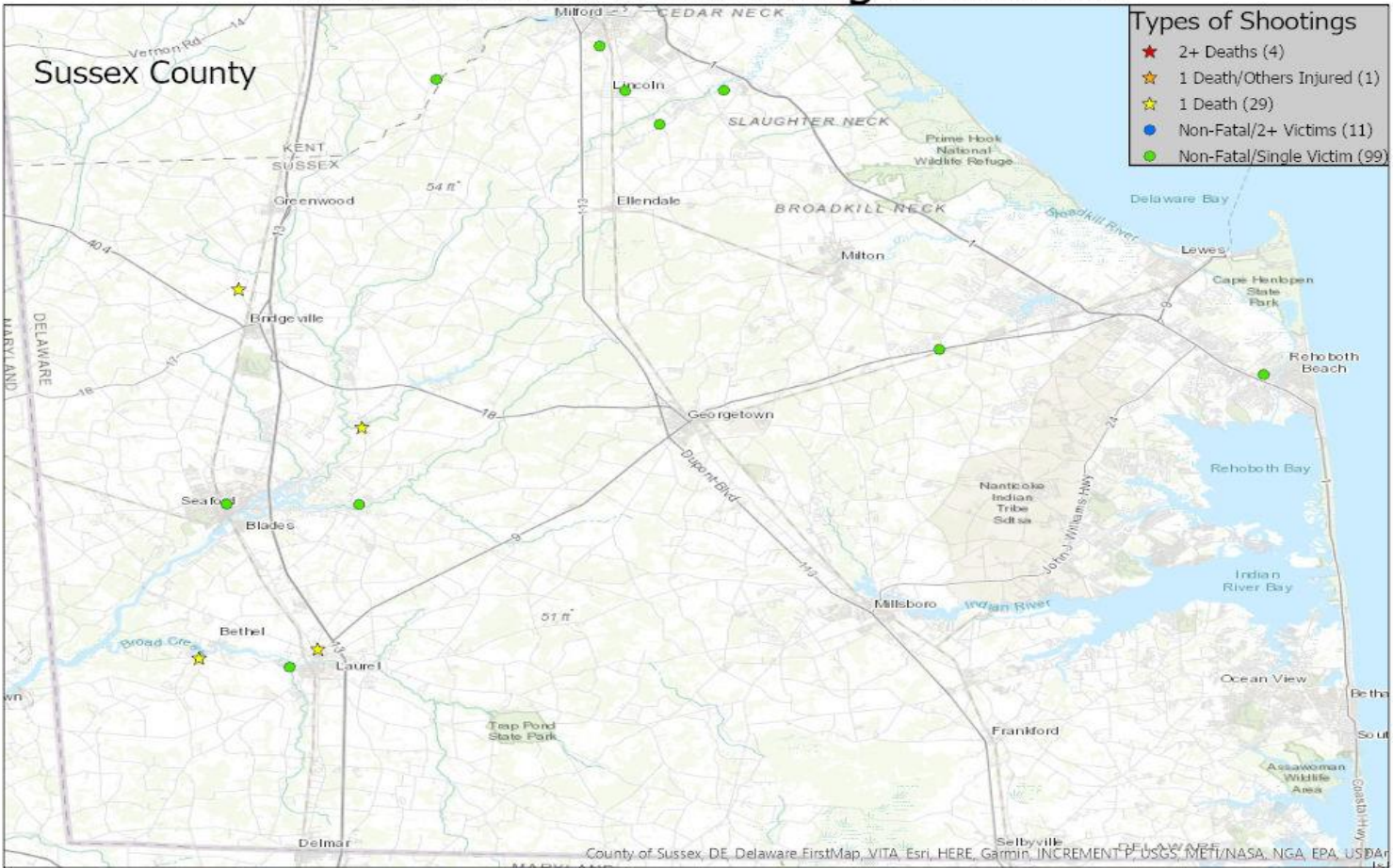
Kent County

2019 Delaware Shooting Locations



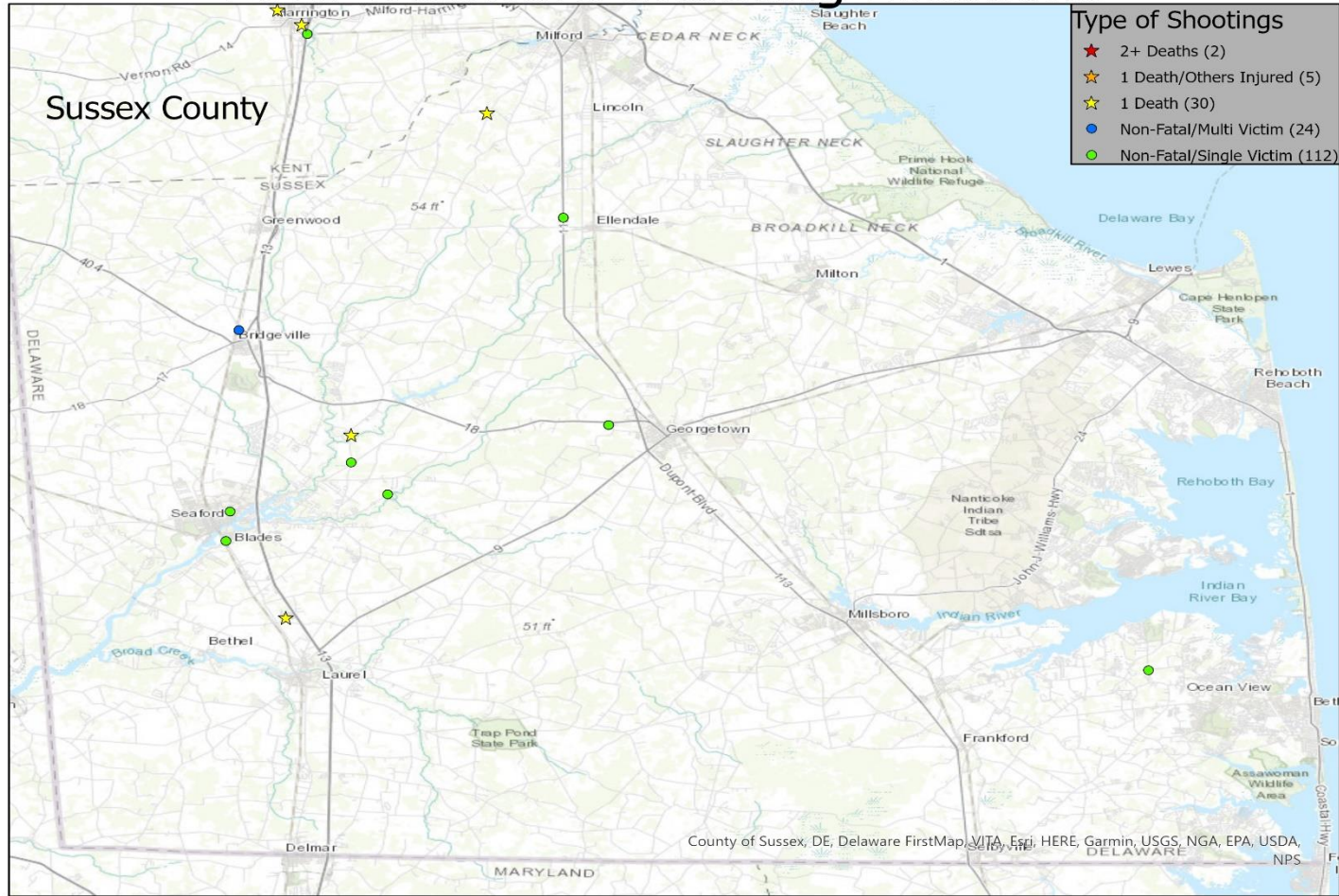
Kent County

2018 Delaware Shooting Locations



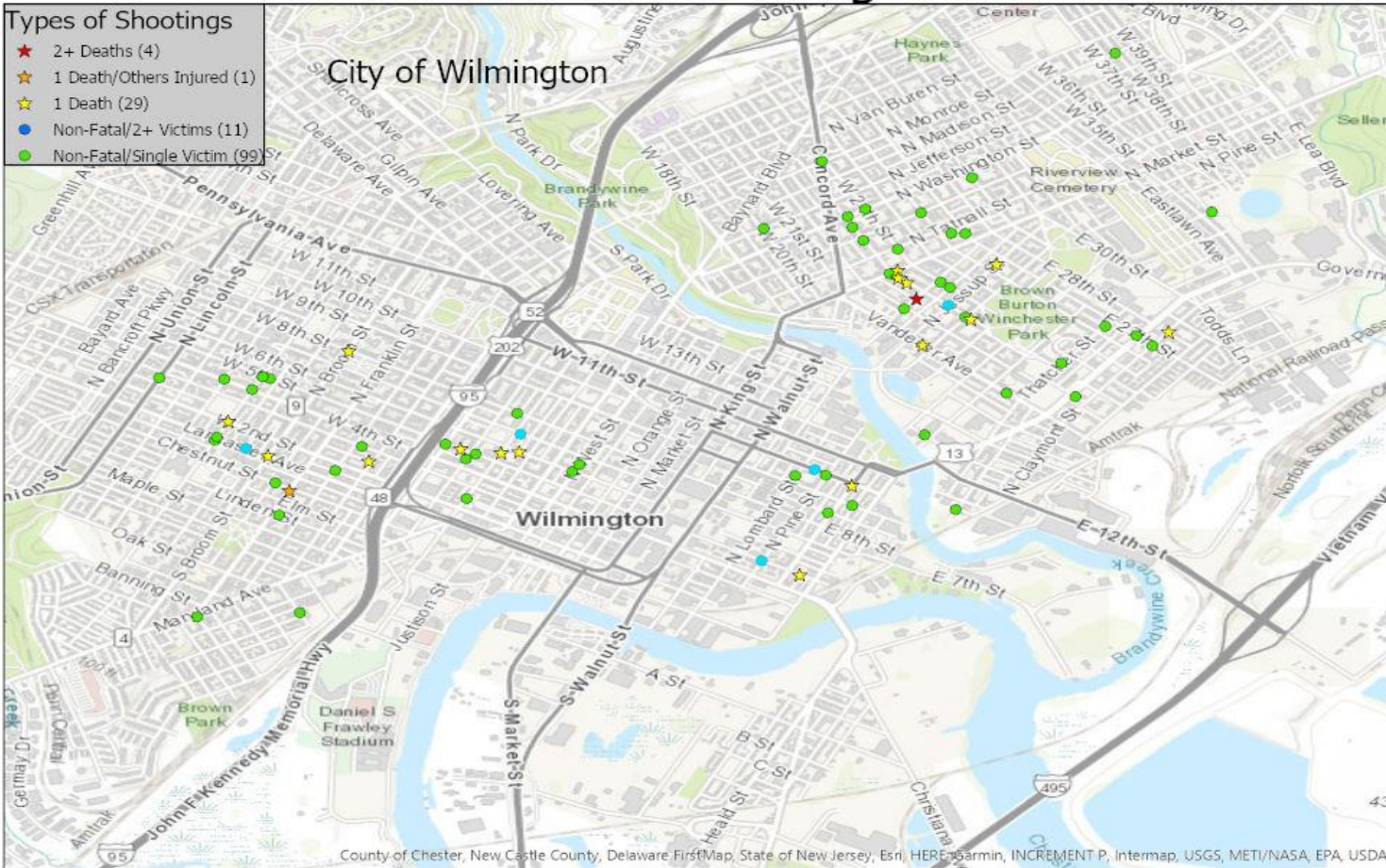
Sussex County

2019 Delaware Shooting Locations



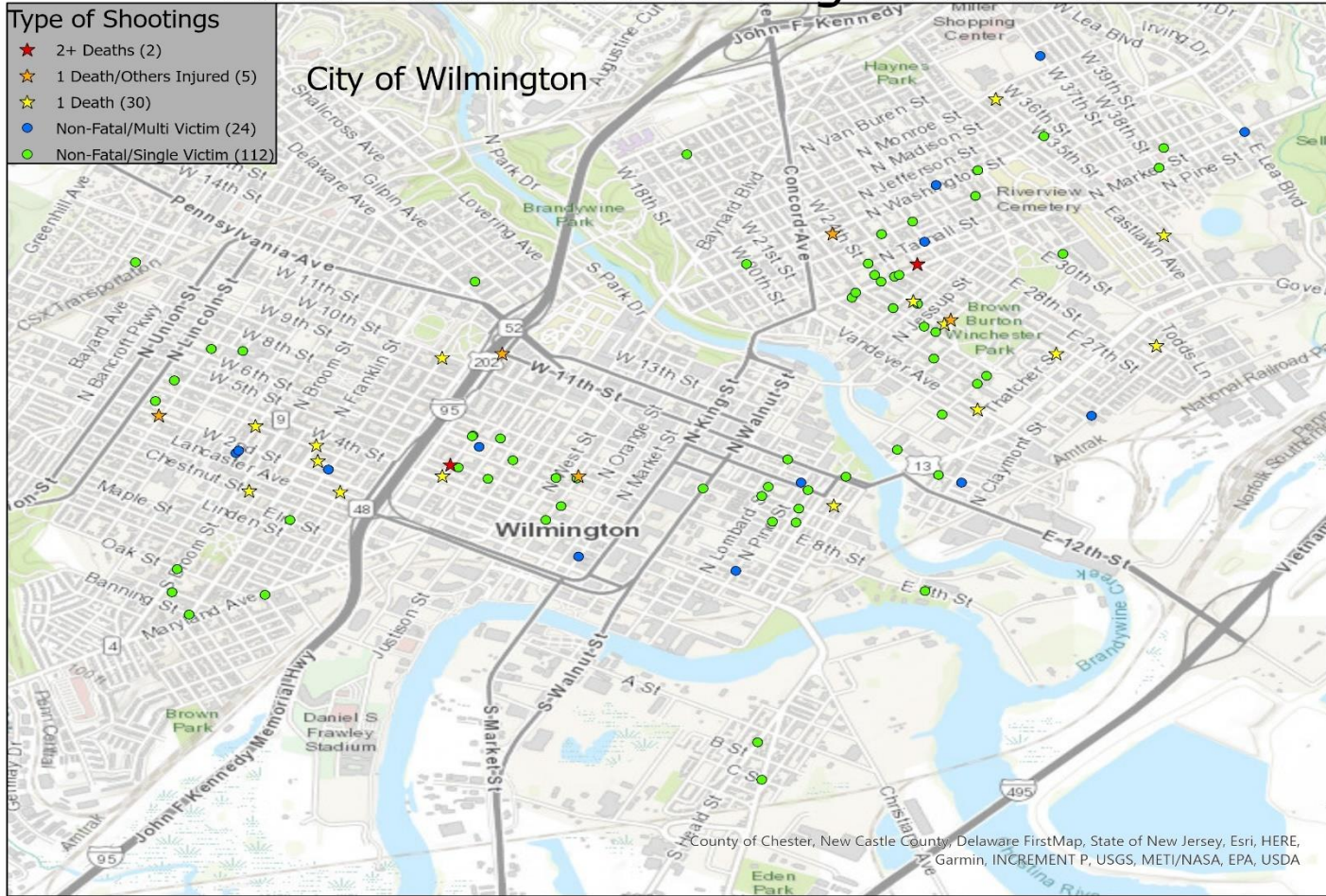
Sussex County

2018 Delaware Shooting Locations



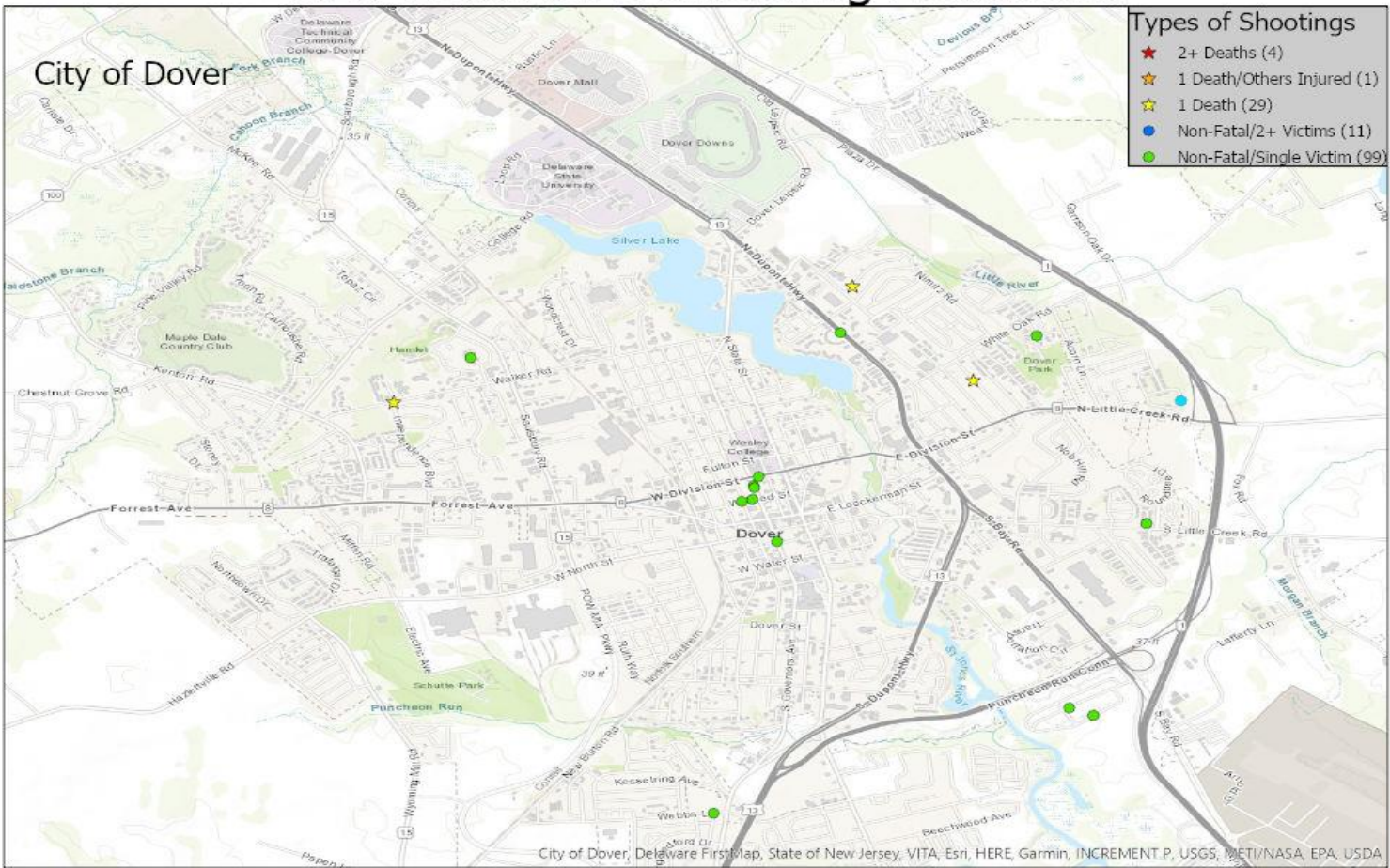
City of Wilmington

2019 Delaware Shooting Locations



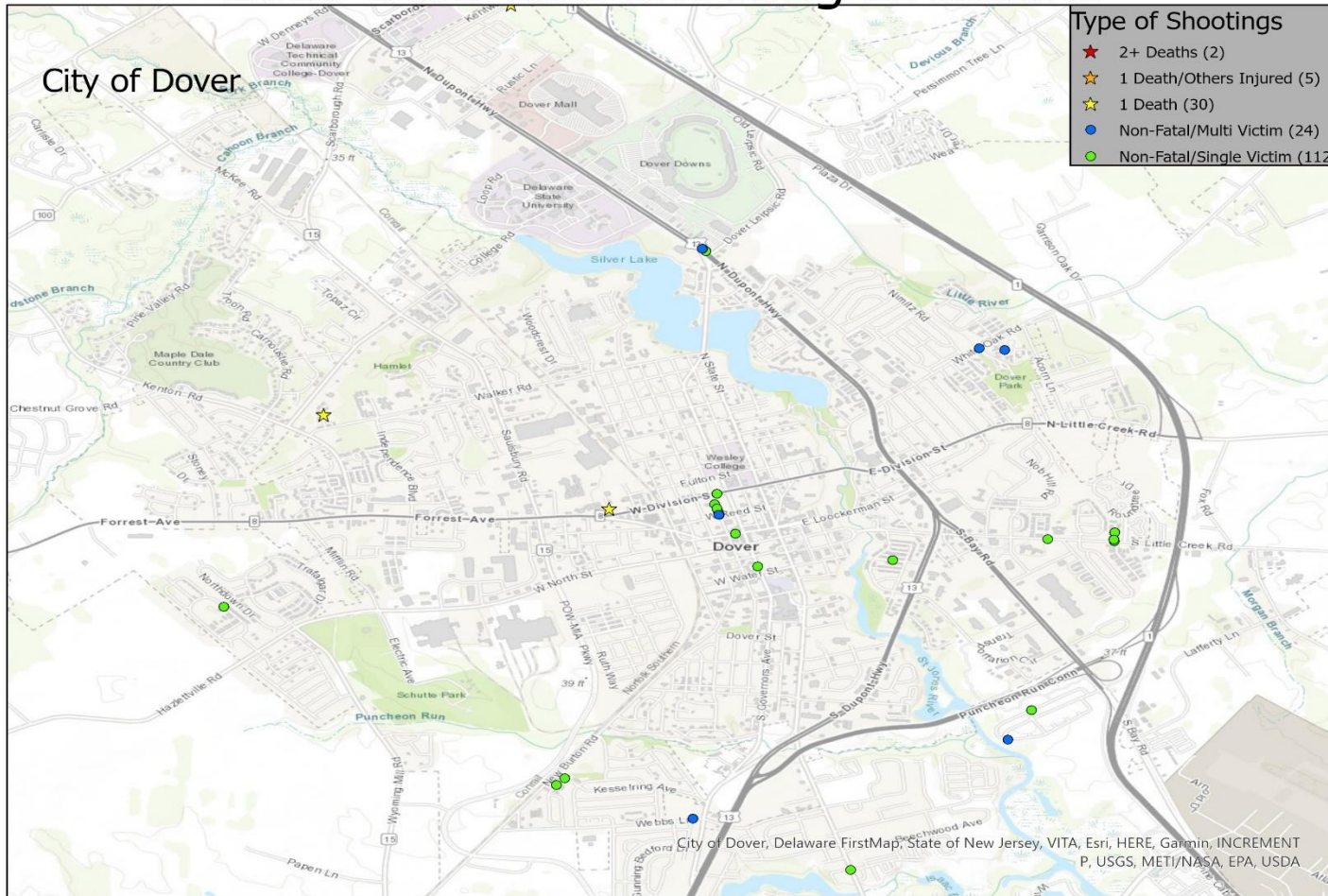
City of Wilmington

2018 Delaware Shooting Locations



City of Dover

2019 Delaware Shooting Locations



City of Dover