
Delaware Juvenile Recidivism

1994 – 2006 Juvenile Level III, IV and V Recidivism Study

November 2007



State of Delaware
Office Management and Budget
Statistical Analysis Center

Delaware Juvenile Recidivism:
1994 – 2006 Juvenile Level III, IV and V Recidivism Study.

Prepared by the Statistical Analysis Center, Office of Management and Budget, State of Delaware.

Authors:
Jorge Rodríguez-Labarca, Senior Analyst,
John P. O'Connell, Director.

State of Delaware Document Number: 100208-071107.

Table of Contents

Executive Summary	1
Introduction.....	3
FY06 Recidivism Summary	4
FY06 12 Month Recidivism Rates.....	5
Interpreting Recidivism Results: A Caution.....	7
Different Measures of Recidivism.....	8
Total Re-arrest Patterns	8
Comparing Misdemeanor Plus Felony and Felony Only Recidivism Rates	10
Re-admission Recidivism.....	12
Technical Note: Measuring Recidivism	14
Level V, IV, and III Felony Recidivism Tables.....	15
Level V Felony Recidivism Rates	17
Level IV Felony Recidivism Rates	23
Level III Felony Recidivism Rates	47
Data Sources	61
Criminal Justice Information System Data.....	61
Juvenile Placement Data.....	62
Secure Placement Episodes	62
Level III, IV and V Recidivism Study Dataset.....	63
DYRS/DOC Re-admission Recidivism Dataset	64
Appendix.....	65
Historical Recidivism Rates	65

Table of Displays

Level V Displays	17
Display 1, Level V Felony Recidivism Rates	17
Display 2, Ferris School for Boys Felony Recidivism Rates	18
Display 3, New Castle County Detention Center Adjudicated Felony Recidivism Rates	19
Display 4, Stevenson House Detention Center Adjudicated Felony Recidivism Rates	20
Display 5, Level V Small Program Felony Recidivism Rates.....	21
Level IV Displays	23
Display 6, Level IV Felony Recidivism Rates	23
Display 7, Chamberlain Academy, High Impact, Felony Recidivism Rates.....	24
Display 8, Clarinda Academy Felony Recidivism Rates.....	25
Display 9, Glen Mills Schools Felony Recidivism Rates.....	26
Display 10, Grace Cottage Felony Recidivism Rates.....	27
Display 11, Ministry of Caring, House of Joseph II, Felony Recidivism Rates.....	28
Display 12, Mowlds Cottage Felony Recidivism Rates	29
Display 13, Snowden Cottage Felony Recidivism Rates	30
Display 14, Springfield Academy Felony Recidivism Rates	31
Display 15, Summit Academy Felony Recidivism Rates.....	32
Display 16, Today Inc., New Dawn, Felony Recidivism Rates	33
Display 17, VisionQuest, Boot Camp, Felony Recidivism Rates	34
Display 18, VisionQuest, Madalyn Program, Felony Recidivism Rates.....	35
Display 19, VisionQuest, Buffalo Soldiers Academy, Felony Recidivism Rates	36
Display 20, Youth Services Agency Felony Recidivism Rates.....	37
Display 21, Level IV Small Program Felony Recidivism Rates	38
Level III Displays	47
Display 22, Level III Residential Felony Recidivism Rates.....	47
Display 23, Camelot, General, Felony Recidivism Rates.....	48
Display 24, Cornell Abraxas, Home Based Services, Felony Recidivism Rates	49
Display 25, Cornell Abraxas, Electronic Monitoring, Felony Recidivism Rates.....	50
Display 26, Cornell Abraxas, Intensive Home Based Services, Felony Recidivism Rates.....	51

Display 27, Lead Inc. Felony Recidivism Rates	52
Display 28, People’s Place II, Felony Recidivism Rates	53
Display 29, Project Stay Free, Day Treatment Program, Felony Recidivism Rates.....	54
Display 30, Project Stay Free, Intensive Home Based Services, Felony Recidivism Rates.....	55
Display 31, Providence Service Corporation, Home Based Family Services, Felony Recidivism Rates.....	56
Display 32, Psychotherapeutic Children’s Services, Family Support Services, Felony Recidivism Rates.....	57
Display 33, Psychotherapeutic Children’s Services, Multisystemic Therapy Program, Felony Recidivism Rates.....	58
Display 34, VisionQuest, Family-Centered Intensive Case Management Program, Felony Recidivism Rates.....	59
Display 35, Level III Small Program Felony Recidivism Rates.....	60
Historical Recidivism Displays.....	65
Display 34, Level V Historical Program Felony Recidivism Rates	66
Display 35, Level IV Historical Program Felony Recidivism Rates	68
Display 36, Level III Historical Program Felony Recidivism Rates	78

Table of Charts

Figure 1, Level V FY06 Re-arrest Recidivism 1 Year After Release, n=499	8
Figure 2, Level IV FY06 Re-arrest Recidivism 1 Year After Release, n=592	9
Figure 3, Level III FY06 Re-arrest Recidivism 1 Year After Release, n=1,394	9

Table of Tables

Table 1, Youth Arrested for a Felony within 12 Months of Release from a Level V Episode, FY06 Releases.....	5
Table 2, Youth Arrested for a Felony within 12 Months of Release from a Level IV Episode, FY06 Releases.....	6
Table 3, Youth Arrested for a Felony within 12 Months of Release from a Level III Episode, FY06 Releases.....	7
Table 4, Delaware 12 Month Juvenile Recidivism Rates: A Comparison of Misdemeanor- Felony and Felony Arrest Analysis.....	11
Table 5, A Comparison of DYRS and DOC Re-admission Rates	13

Executive Summary

This study of Delaware juvenile recidivism provides a comprehensive summary of re-arrest patterns when juvenile offenders are released back to the *street* after concluding a stay in a locked secure facility, a staff secure or a non-secure program. In many cases, a juvenile moves between programs before being released to the community. For instance, the typical Ferris School for Boys placement episode includes three contiguous placements: (1) admission to the Detention Center, (2) admission to the Ferris School, and (3) transition back to the community through Mowlds Cottage. In this case, time *at-risk* in the community does not start until the juvenile leaves Mowlds Cottage.

FY06 Juvenile Recidivism:

- Level V locked secure facility releases: 44 percent were re-arrested for a felony within one year (page 17.)
- Level IV staff secure programs releases: 38 percent were re-arrested for a felony within one year (page 23.)
- Level III non-secure program releases: 29 percent were re-arrested for a felony within one year (page 47.)

Long term juvenile recidivism rates have decreased over the past decade:

- Level V recidivism has decreased from 52 percent to 44 percent.
- Level IV recidivism had decreased from 51 percent to 38 percent.
- Level III recidivism has decreased from 45 percent to 29 percent.

The decrease in long-term juvenile recidivism rates is associated with the reorganization of the Division of Youth Rehabilitative Services (DYRS) incarceration, placement and treatment programs, which were implemented at the same time as the Dispositional Guidelines for Juveniles in the mid-1990s.

While short-term juvenile recidivism rates have improved significantly since the mid-1990s, long-term recidivism rates still remain an important issue. After two full years of being at-risk in the community up to 60 percent of juveniles released from DYRS programs have been re-arrested for a felony. Furthermore, four years after release from Ferris School, the main Level V juvenile facility, 60 percent of these offenders have been sentenced to an adult Level V facility (page 13.)

Intentionally Blank

Introduction

This study provides comprehensive recidivism rates for juvenile offenders released by the Department of Services for Children, Youth and Their Families (DSCYF), Division of Youth Rehabilitative Services (DYRS) between 1994 and 2006 from out-of-home secure residential placements and non-secure programs.¹ There are two major levels of security related to out-of-home residential placements: secure and non-secure. Under Delaware's Dispositional Guidelines for Juveniles, youth can be sentenced to these different program levels as well as probation. The program levels reflect a graduated approach that requires increasingly intensive programming according to risk and need assessments of each juvenile. The more intensive programming corresponds to residential secure placements, the less intensive to non-secure placements:

- Level V, the most intensive programming available, is comprised of locked secure institutional settings like the Ferris School for Boys.
- Level IV staff secure programs provide 24 hour supervision and general diagnostic, substance abuse and sex offender treatment.
- Level III programs provide programming in non-secure settings.

Most of the programming is provided by contracted private organizations both in Delaware and out-of-state. Recidivism rates and detailed juvenile offender profiles are presented for 129 separate institutions, public and private residential programs, and Level III programs.

The main measure of recidivism used in this study is a felony re-arrest – not a re-conviction or a re-admission – following release from a placement. Re-arrest recidivism rates are reported for four different at-risk intervals: 6, 12, 18, and 24 months. Many juvenile recidivism studies report truncated results because they stop following juveniles once they reach the age of majority. This study does not truncate results because Delaware arrests can be tracked through an offender's adult years.

Juvenile justice policy makers established the use of the felony re-arrest rate as the main measure of recidivism for this series of studies in October of 1998. It was determined that the felony re-arrest rate tapped some of our most reliable data and that, furthermore, it provides the possibility for a *fairer* cross-jurisdictional comparison of recidivism rates. While the felony re-arrest rate is a viable measure of recidivism, it is preferable to measure recidivism using multiple measures. Where re-arrest highlights public safety risks to the community, re-detention underscores the court's willingness to remove a juvenile arrestee from the community, at least temporarily, and re-incarceration would highlight the Family Court's affirmation of guilt for a new crime.

¹ Due to the use of the latest available placement data for each edition of this report, the release counts, felony recidivism rates, and historical profiles presented in this document are not comparable to information presented in previous reports. See page 63 for a detailed explanation of how the dataset was constructed for this study.

As a means of providing a fuller understanding of juvenile criminal behavior and recidivism two additional views of recidivism are provided in the introductory part of this study. In addition to the *main* felony re-arrest measure, the full view of all re-arrests (by type of arrest) is examined for FY06. Second, the FY95 to FY06 felony plus the misdemeanor re-arrest pattern is examined.

FY06 Recidivism Summary

Juveniles were tracked for at least 12 months after their release from 5,653 Level V placement episodes that occurred between FY95 and FY06². Between FY97 (the State's fiscal year runs from July to June) and FY06 (the last year that a full cohort of releases could be studied for being at-risk for 12 months,) the recidivism rate decreased from 52 percent for youth released during FY97 to 44 percent for those released in FY06 – a 15 percent decrease in felony re-arrest recidivism. The average length of stay in a Level V secure setting increased between FY97 and FY99 from 3.8 to 4.5 months. Since then, the Level V average length of stay decreased to 3.6 months. See page 17 for more details on Level V recidivism rates.

Juveniles were tracked for at least 12 months after their release from 5,432 Level IV placement episodes. Excluding an increase in the recidivism rate between FY95 and FY96, the recidivism rate decreased from 51 percent in FY97 to 38 percent in FY06 – a 25 percent decrease in felony re-arrest recidivism. The average length of stay in a Level IV secure setting decreased during this time period from 6.7 to 2.8 months. See page 23 for more details on Level IV recidivism rates.

Juveniles were tracked for at least 12 months after their release from 7,492 Level III placement episodes. Excluding an increase in the recidivism rate between FY97 and FY98, the recidivism rate has decreased from 36 percent in FY99 to 29 percent in FY06 – a 19 percent reduction in felony re-arrest recidivism. The average length of stay in a Level III non-secure setting decreased from 7.6 months in FY97 to 2.5 months in FY06. See page 47 for more details on Level III recidivism rates.

The tables below – Tables 1, 2, 3 – provide the FY06 felony re-arrest and summary by individual program within each level of sanction. Recidivism is reported at one year at-risk after release from the secure placement episode. These recidivism results are the most recent available because a full year must pass before recidivism statistics can be calculated for a cohort.

² See the explanations of placement episodes on pages 14 and 62 of this document.

FY06 12 Month Recidivism Rates

The Level V FY06 release cohort recidivism rate at 12 months at-risk for a felony arrest is 44 percent. The following table shows the FY06 12 month recidivism rate for Level V programs.

Table 1, Youth Arrested for a Felony within
12 Months of Release from a Level V Episode, FY06 Releases

Program	No. Released	No. Arrested	Recidivism Rate
New Castle County Detention Center, DE	245	111	46%
Stevenson House Detention Center, DE	158	55	35%
The Ferris School for Boys, DE	148	78	53%
C.C.A., South West Indiana Youth Village, Drug and Alcohol, IN	7	1	14%
Level V Episodes ³	499 ⁴	217	44%

³ There were 499 releases during FY06 from Level V episodes. However, three juveniles died within twelve months of their release from a Level V episode. The recidivism rates presented in this analysis are based on the number of juveniles alive at the end of each at-risk period.

⁴ Please note that secure placement episode statistics within a level are not additive. Double counting would occur if an attempt was made to sum to a Level V total because a Level V episode may include admissions to more than one Level V program.

The Level IV FY06 release cohort recidivism rate for a felony arrest is 38 percent. The following table shows the FY06 12 month recidivism rate for Level IV programs.

Table 2, Youth Arrested for a Felony within
12 Months of Release from a Level IV Episode, FY06 Releases

Program	No. Released	No. Arrested	Recidivism Rate
Snowden Cottage, DE	116	57	50%
Youth Services Academy, PA	102	52	51%
Grace Cottage, DE	97	10	10%
VisionQuest, Boot Camp, PA	65	32	50%
Mowlds Cottage, DE	61	24	39%
Glenn Mills Schools, PA	32	17	53%
Summit Academy, PA	21	11	52%
Springfield Academy, SD	19	7	37%
Today Inc., New Dawn Program, PA	16	4	25%
Chamberlain Academy, High Impact, SD	12	3	25%
Ministry of Caring, House of Joseph II, DE	10	7	70%
VisionQuest, Madalyn Program, PA	10	0	0%
Clarinda Academy, IA	9	4	44%
Mountain Manor, MD	8	5	63%
Diversified Treatment Alternatives, PA	7	0	0%
New Hope, Triad, SC	6	0	0%
Today Inc., General, PA	4	1	25%
New Hope, Starting Pointe, SC	3	0	0%
The Pines, Adolescent Male Program, TN	3	0	0%
The Pines, General, VA	3	1	33%
Alt. Behavioral Srv., New Horizon, SC	2	1	50%
Manatee Palms Youth Service, FL	2	1	50%
The Pines, Project Right Track, SC	2	2	100%
VisionQuest, Buffalo Soldiers Academy, PA	2	0	0%
Alt. Behavioral S., Way Point Program, SC	1	0	0%
Au Clair School, General, DE	1	0	0%
Chamberlain Academy, General, SD	1	0	0%
George Junior Republic, PA	1	0	0%
Riverside Treatment Services, Inc., D.C.	1	1	100%
Level IV Episodes	592	226	38%

The Level III FY06 release cohort recidivism rate at 12 months at-risk for a felony arrest is 29 percent. The following table shows the FY06 12 month recidivism rate for Level III programs.

Table 3, Youth Arrested for a Felony within
12 Months of Release from a Level III Episode, FY06 Releases

Program	No. Released	No. Arrested	Recidivism Rate
VisionQuest, FCICM, DE	357	111	31%
Project Stay Free, Intensive Home Based, DE	275	93	34%
Lead Inc., Home Based Services, DE	176	58	33%
People's Place II, DE	176	30	17%
P.C. S., Multisystemic Therapy Program, DE	123	27	22%
Cornell Abraxas, Home Based Services, DE	117	27	23%
Cornell Abraxas, Intensive Home Based, DE	103	28	27%
Project Stay Free, Day Treatment, DE	70	35	50%
Providence Srv. Co., Home Based Srv., DE	55	18	33%
Cornell Abraxas, Electronic Monitoring, DE	42	17	40%
P.C.S., Family Support Program, DE	22	4	18%
Diversified Treatment Alt., Foster Care, DE	4	0	0%
Camelot, General, DE	3	3	100%
Level III Episodes	1,394	410	29%

Interpreting Recidivism Results: A Caution

Interpretations of the recidivism results in this study can be made for general types of programs like Level V or Level IV and for a specific program over time. Caution, however, should be exercised when comparing a specific program with another. It might be assumed that all Level IV programs are similar and therefore comparable in terms of recidivism. Whereas this may be true for some programs, it may not be for others. For instance, a Level IV shelter where juveniles are held for two or three weeks awaiting placement is not the same as a one year, or even a three month Level IV program, that provides extensive counseling. Juvenile programs also differ significantly in the type of offender they are willing to serve: not all programs are geared toward providing services to youth with multiple unsuccessful prior placements, some prefer instead to service offenders without prior placements.

It is also important to realize that youth with more extensive criminal histories are more likely to have higher recidivism rates. Prior criminal history patterns differ significantly from program to program and even from year to year within a program. Fortunately, this study provides length of stay and prior criminal history summaries for each program. The historical profiles provided in this report should be helpful in framing discussions regarding juvenile recidivism.

Different Measures of Recidivism

Measuring recidivism as a re-arrest or a re-admission is an important research and policy issue. It is preferable to measure recidivism using multiple measures where re-arrest highlights public safety risks to the community, re-detention underscores the court's willingness to remove a juvenile arrestee from the community, at least temporarily, and re-incarceration highlights the Family Court's affirmation of guilt for a new crime.

This study, at the request of policy makers in October 1998, assesses DYRS recidivism in terms of felony re-arrest. This, it is believed, provides the possibility for a *fairer* cross jurisdictional comparison of recidivism rates. Re-detention information, although not used as an explicit recidivism measure, is reported as a part of the *offender profile* in this study. That is, the reader can compare the relationship between the average number of prior detention episodes for a specific release cohort and that cohort's felony re-arrest rate. No information is provided in this report regarding re-conviction because the data systems are not systematically capable of providing this information. While the major purpose of this report is to provide felony re-arrest recidivism rates for the 18,009 release events between July 1994 and June 2006 from DYRS Level III, Level IV and Level V programs and institutions, re-arrest information is also collected for misdemeanors and technical or administrative measures. This more extensive arrest information provides valuable background information regarding juvenile crime patterns after release from DYRS programs and institutions.

Total Re-arrest Patterns

The pie charts below show FY06 re-arrest recidivism rates for released juveniles at-risk at least 12 months. Three different types of recidivism are displayed in each of these graphs: (1) Recidivism where a felony arrest constitutes the most serious criminal activity after release, and (2) where a misdemeanor arrest constitutes the most serious criminal event, and (3) violation of probation (VOP) arrests.

Figure 1, Level V FY06 Re-arrest Recidivism 1 Year After Release, n=499

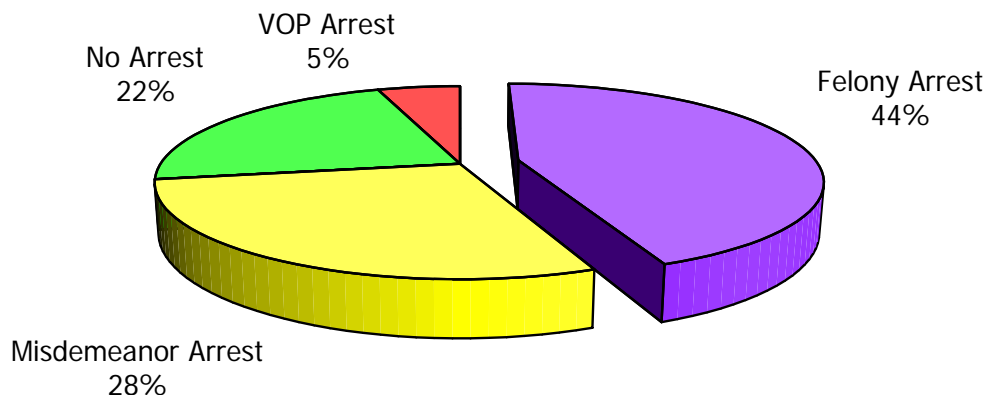


Figure 1 shows the recidivism patterns for the 499 FY06 releases from Level V placement episodes after one year at-risk. Seventy-seven percent of the Level V releasees were re-arrested within one year. Forty-four percent had felony re-arrests, 28 percent had re-arrests where a misdemeanor was the most serious charge, and another five percent were re-arrested only for violations of probation.

Figure 2 shows the recidivism patterns for the 592 FY06 releases from a Level IV placement episode. Seventy-five percent of the Level IV releasees were re-arrested within one year. Thirty-eight percent had felony re-arrests, 32 percent had re-arrests where a misdemeanor was the most serious charge, and another five percent were re-arrested only for violations of probation. When the full range of re-arrest recidivism is considered, there is very little difference whether a juvenile was released from a Level IV or V program.

Figure 3 shows the recidivism patterns for the 1,394 FY06 releases from a Level III placement episode. Seventy-one percent of the Level III releasees were re-arrested within one year. Twenty-nine percent had felony re-arrests, 35 percent had re-arrests where a misdemeanor was the most serious charge, and another seven percent were re-arrested only for violations of probation. Level III releases were just as likely to be re-arrested in the year following release from a program, but they were also less likely to be re-arrested for a felony.

Figure 2, Level IV FY06 Re-arrest Recidivism 1 Year After Release, n=592

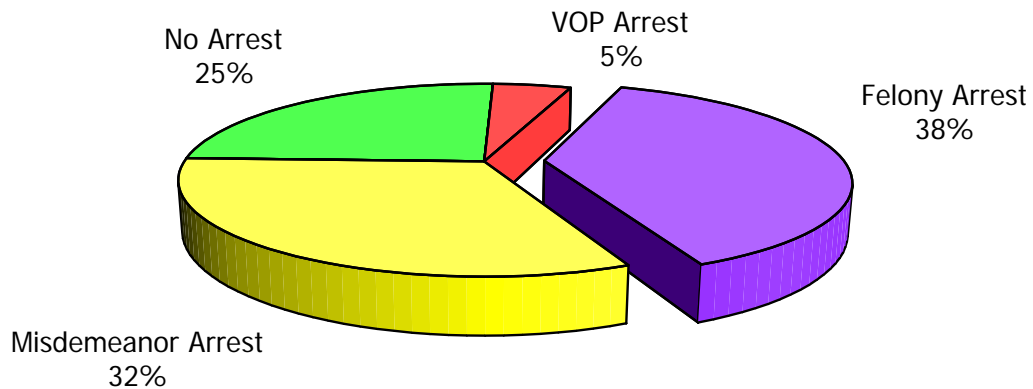
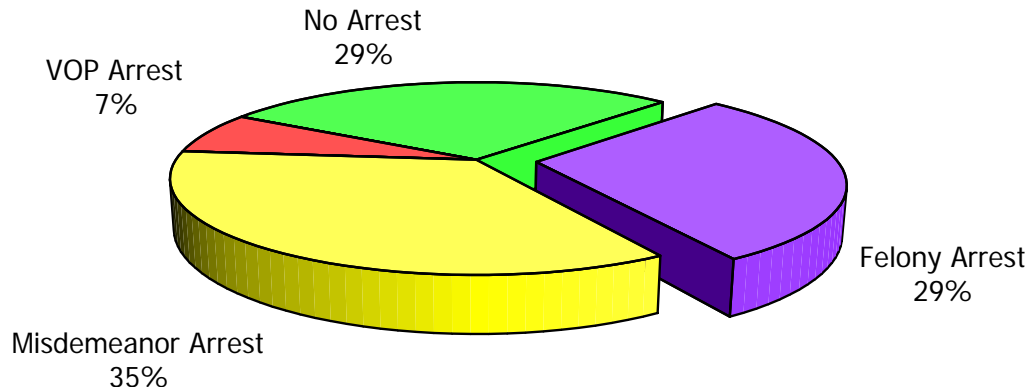


Figure 3, Level III FY06 Re-arrest Recidivism 1 Year After Release, n=1,394



Comparing Misdemeanor Plus Felony and Felony Only Recidivism Rates

Another perspective on recidivism is arrests for new crimes only. Proponents of this perspective exclude arrests for violations of probation. Many violations of probation arrests are closely associated with intensive supervision programs where juveniles are arrested, not for breaking the law, but for violating the conditions of their sentencing orders, including failing to fully comply with the conditions of the intensive supervision program.

In some situations, violations of probation, when added to the recidivism for new crimes can make an intensive supervision program appear more punitive than it was designed to be. For example, the Serious Juvenile Offender program had 38 percent more technical arrests than a similar group of delinquents that were not part of the program.⁵ Although some may view an arrest for a violation of probation as less serious than an arrest for a new crime, an arrest for a technical violation is just as likely to result in a re-incarceration as a felony arrest (70 percent versus 71 percent) and much *more* likely to result in a re-incarceration than a misdemeanor arrest (70 percent versus 48 percent).⁶ Therefore, while conceptually not as serious as a new crime, the impact of a technical violation arrest is just as significant as a new felony arrest.

Table 4, *Delaware 12 Month Juvenile Recidivism Rates*, shows that the reduction in felony re-arrest recidivism was the same for Level IV and Level IV programs. Between FY96 and FY06, the 12 month Level V felony re-arrest recidivism rate decreased from 60 percent to 44 percent: a 16 percentage point decrease. During the same time period, the 12 month Level IV felony re-arrest recidivism rate, decreased 16 percentage points – from 54 percent to 38 percent. The decrease in felony and misdemeanor recidivism is similar over time to the reduction in felony re-arrest recidivism. Between FY96 and FY06, the reduction in felony and misdemeanor re-arrests was eight percentage points for Level IV and Level IV. It is interesting to note that even though the Delaware juvenile justice system implemented graduated sanctions in the mid-1990s, there has been a more significant decrease in felony re-arrests (16 percentage points) than for the combination of misdemeanor plus felony re-arrests (eight percentage points.)

⁵ Delaware's Serious Juvenile Offender Program, SAC, August 2004, p. 24.

⁶ *Ibid*, p. 3.

Table 4, Delaware 12 Month Juvenile Recidivism Rates:
A Comparison of Misdemeanor-Felony and Felony Arrest Analysis

Level Release Cohort	<u>Misdemeanor and Felony Analysis</u>			<u>Felony Analysis</u>		
	N. Released	N. Arrested	Rate	N. Released	N. Arrested	Rate
Level IV						
FY 95	155	108	70%	155	74	48%
FY 96	268	209	78%	268	144	54%
FY 97	299	224	75%	299	152	51%
FY 98	495	388	78%	495	244	49%
FY 99	534	410	77%	534	251	47%
FY 00	528	379	72%	528	230	44%
FY 01	518	355	69%	518	211	41%
FY 02	635	453	71%	635	261	41%
FY 03	499	366	73%	499	226	45%
FY 04	467	344	74%	467	206	44%
FY 05	443	318	72%	443	178	41%
FY 06	592	413	70%	592	226	38%
Level V						
FY 95	360	285	79%	360	210	58%
FY 96	489	393	80%	489	293	60%
FY 97	447	347	78%	447	232	52%
FY 98	363	276	76%	363	164	45%
FY 99	398	290	73%	398	185	47%
FY 00	482	344	71%	482	208	43%
FY 01	522	365	70%	522	223	43%
FY 02	513	373	73%	513	238	47%
FY 03	497	368	74%	497	218	44%
FY 04	579	421	73%	579	259	45%
FY 05	504	370	73%	504	230	46%
FY 06	499	357	72%	499	217	44%

Note: Analysis excludes arrests for municipal ordinances, non-DUI related traffic offenses and technical violations.

Re-admission Recidivism

Policy makers decided, in October 1998, that Delaware should assess DYRS recidivism in terms of felony re-arrests. Measuring recidivism in terms of re-arrests allows us to know what the propensity to be arrested for new crimes is and to track repeat criminality over time. Re-arrest recidivism gives the reader a sense of the degree to which DYRS can increase public safety. The expectation is that the programming offered by DYRS to juvenile offenders will decrease their propensity to commit future crimes and thus re-admission to juvenile or adult facilities. This study reports on juvenile re-detention and re-incarceration information so that readers can assess the relationship between prior detentions or incarcerations and felony re-arrest rates.

Another measure of the relationship between programming and increased public safety is the re-admission of offenders released from DYRS programs to juvenile or adult facilities. This measure of recidivism represents a first step in answering the question: How do our juveniles do after they leave the juvenile justice system? Do they continue to phase-out of the criminal justice system, as the DYRS downward trend in long term felony recidivism rates would indicate? Or, do they become the first wave of new admissions to the Department of Correction (DOC.) This report explores these questions for juveniles who have been released from a Ferris School for Boys placement episode. These are not typical juveniles, as the Ferris School for Boys recidivism chart on page 18 shows, these juveniles have, on average, already been detained 3.5 times, admitted to juvenile incarceration 2.5 times and have 8.8 prior arrests.

The 12 month FY02 Ferris School rate for re-admissions to a juvenile and/or an adult detention, Level IV or Level V placement is 72 percent. The total recidivism rate or *re-admission to YRS/DOC SD, LIV, LV* rate counts an offender recidivating to both a YRS and a DOC setting only once. Thus, the 12 month total re-admission rate of 72 percent is lower than adding the 12 month DYRS (51 percent) and DOC (45 percent) re-admission rates.

As time passes juvenile offenders reach the age of majority and age-out of the juvenile system. The most recent release cohort where all Ferris School offenders had reached the age of majority at the end of this study's follow-up period is the FY02 Ferris School release cohort. At release, members of the FY02 Ferris School cohort ranged from 14.8 years to 22.6 years of age. Obviously, those who were under 18 years of age at release were released from the Ferris School to the community. However, two Superior Court cases were transferred to DOC after their Ferris School stay and were then released from a DOC facility to the community. Thus, analysis of the FY02 Ferris School cohort can answer this critical policy question: How many juvenile offenders move to the adult system? One-hundred two of the 123 offenders in the FY02 Ferris School cohort⁷ moved to the adult system as either pre-trial detainees or sentenced Level IV or V Superior Court offenders, for an overall DOC re-

⁷ A total of 126 releases occurred during FY02 from Ferris School placement episodes. However, three juveniles died within 24 months of their release from a Level V episode.

admission rate of 83 percent. The FY02 Ferris School DOC re-admission rate is similar to the overall DOC re-admission rate for the FY97 Level V release cohort, which was 87 percent.⁸

Table 5 provides detailed re-admission summaries for the FY02 Ferris School release cohort. Keeping in mind that the FY02 release cohort is the most recent group of releases that lets us see the full impact of serious juvenile offenders moving from the juvenile to the adult system, one can see that by the two year at-risk threshold, 54 percent of the juveniles released from a Ferris School placement episode were re-admitted to a DYRS detention, Level IV or Level V program. After the second year at-risk, the DYRS component of re-admission recidivism changes slightly because all the juveniles in this cohort have reached the age of majority by the third year at-risk. And, as may be expected, as they reach the age of majority the adult re-admission rate continues to increase. Four years after their release, the FY02 Ferris School release cohort reaches a DOC re-admission recidivism rate of 82 percent.

It is very important when examining Table 5 to realize that an offender recidivating to both a YRS and a DOC setting is only counted once for the total recidivism rate or *re-admission to YRS/DOC SD, LIV, LV*. Thus, where the total four year re-admission rate for the FY02 cohort is 89 percent, offenders who had been re-admitted to a YRS facility before they reached the age of majority, and were subsequently admitted to DOC, are *not* counted twice.

Table 5. A Comparison of DYRS and DOC Re-admission Rates

FY02 Ferris School release cohort, n=126	Time Since Release					
	6 mo.	12 mo.	18 mo.	2 years	3 years	4 years
Re-admission to YRS/DOC SD, L IV, L V ⁹	47%	72%	80%	83%	86%	89%
Re-admission to YRS	40%	51%	52%	54%	53%	53%
Re-admission to SD	39%	49%	51%	52%	52%	52%
Re-admission to L IV	12%	16%	17%	17%	17%	17%
Re-admission to L V	16%	19%	23%	24%	23%	23%
Re-admission to DOC	19%	45%	60%	67%	76%	83%
Re-admission to SD	19%	44%	59%	67%	76%	83%
Re-admission to L IV	2%	9%	19%	24%	30%	32%
Re-admission to L V	10%	23%	38%	46%	53%	60%

⁸ Delaware Juvenile Recidivism, SAC, May 2005, p. 10.

⁹ SD: secure detention; L IV: quasi-incarceration, e.g., staff secure DYRS program or a DOC L IV held at L V; L V: a locked correctional facility.

Technical Note: Measuring Recidivism

The FY07 Budget Act, 75 Del. Laws c. 350 § 78, authorizes the Delaware Statistical Analysis Center (SAC) with preparing this report. Juvenile justice policy makers requested in October 1998 that SAC assess DYRS recidivism in terms of felony re-arrests. Thus, in this study recidivism is defined as a new felony arrest in Delaware. Recidivism is measured when a youth is arrested for a felony in Delaware after being released from a DYRS Level III, IV or V placement episode. Recidivism is reported as the percentage of persons released who are re-arrested following release. Arrests for technical violations, misdemeanors, or traffic offenses not related to driving under the influence or motor vehicle theft are not included in the remainder of this study.

Traditionally, recidivism is measured from the date of release from an institution or a residential placement. This measure is valid for systems that take youth from the street, incarcerate them, and then release them back to the street. Delaware's juvenile system is much more likely to place the juvenile offender in a series of secure placements before a youth is released to the community. The methodology in this report captures the serial institutionalization of a juvenile as a *secure placement episode*.

Secure placement episodes comprise an uninterrupted period of time when a youth is not in the community and may include multiple releases from secure residential placements. For example, the typical Ferris School for Boys placement episode includes three contiguous placements: (1) admission to the Detention Center, (2) admission to the Ferris School, and (3) transition back to the community through Mowlds Cottage. The at-risk period for the juvenile who had a typical Ferris School for Boys placement episode does not start until the juvenile has been released from Mowlds Cottage and is no longer in secure supervision. In this study, the post-release *at-risk* period starts when a juvenile is released to the community.

Level V, IV, and III Felony Recidivism Tables

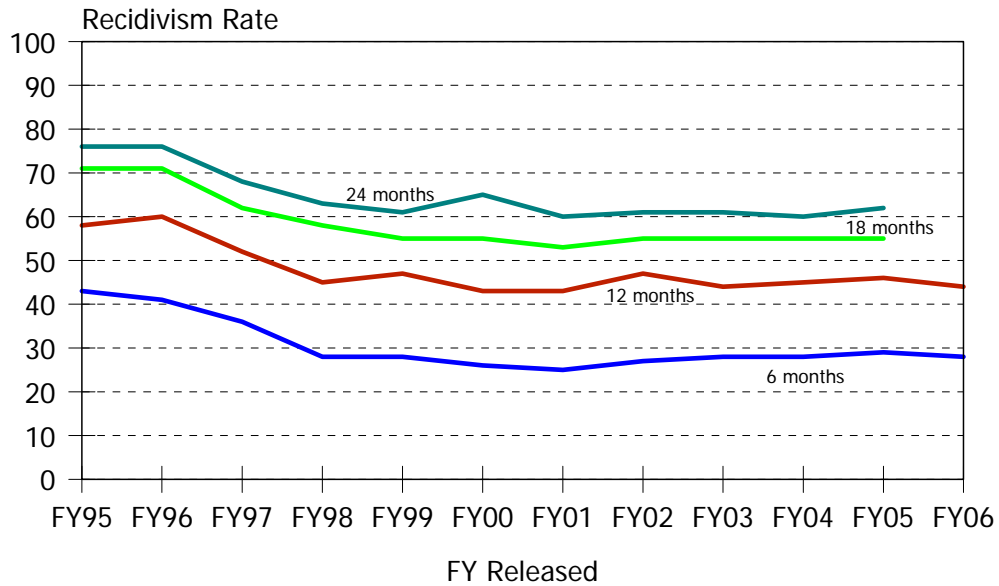
The following pages show felony recidivism rates for total Level V, IV, and III and selected programs in the study.

Recidivism rate tables and graphs are shown for programs that released more than 9 juveniles during fiscal years 2004, 2005 or 2006. Only recidivism rate tables are shown for small programs – programs that released less than 10 juveniles in FY04, FY05, and FY06.

Felony recidivism rates are presented in the following pages for four release thresholds: six, 12, 18, and 24 months since release. As the last releases for FY05 occurred during June, 2005, all youth in the FY05 cohort had been released at least 24 months. All youth in the FY06 cohort had been released for at least 12 months on August 12, 2007.

Intentionally Blank

Display 1, Level V Felony Recidivism Rates



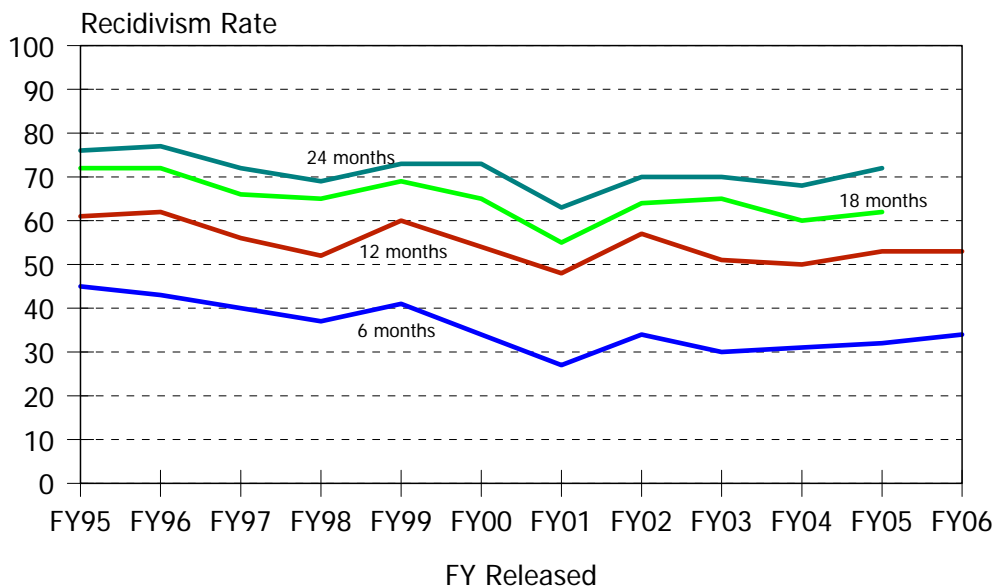
Level V Felony Recidivism Rates

Time Period	N. Released	Months Since Release			
		6 Months	12 Months	18 Months	24 Months
FY 97	447	36%	52%	62%	68%
FY 98	363	28%	45%	58%	63%
FY 99	398	28%	47%	55%	61%
FY 00	482	26%	43%	55%	65%
FY 01	522	25%	43%	53%	60%
FY 02	513	27%	47%	55%	61%
FY 03	497	28%	44%	55%	61%
FY 04	579	28%	45%	55%	60%
FY 05	504	29%	46%	55%	62%
FY 06	499	28%	44%	.	.

Historical Profile of Youth Released by Fiscal Year

Average	Total	Fiscal Year Released										
		97	98	99	00	01	02	03	04	05	06	
Level V LOS in months	3.7	3.8	3.5	4.5	4.4	3.9	3.9	3.6	3.3	3.3	3.6	
Placement episode LOS in months	7.1	6.8	7.4	9.1	7.5	7.7	7.5	6.5	5.8	6.2	6.5	
No. of prior detention admissions	3.0	2.3	2.5	2.7	2.9	2.9	3.1	3.1	3.4	3.9	3.2	
No. of prior incarceration admissions	2.2	1.7	1.9	2.1	2.3	2.4	2.3	2.1	2.2	2.4	2.4	
Number of prior felony arrests	2.4	3.5	2.8	2.8	2.5	2.4	2.1	2.2	2.1	2.2	2.2	
Number of prior arrests	7.5	8.6	7.6	7.4	6.9	6.8	7.2	7.4	7.4	8.2	7.9	

Display 2, Ferris School for Boys Felony Recidivism Rates



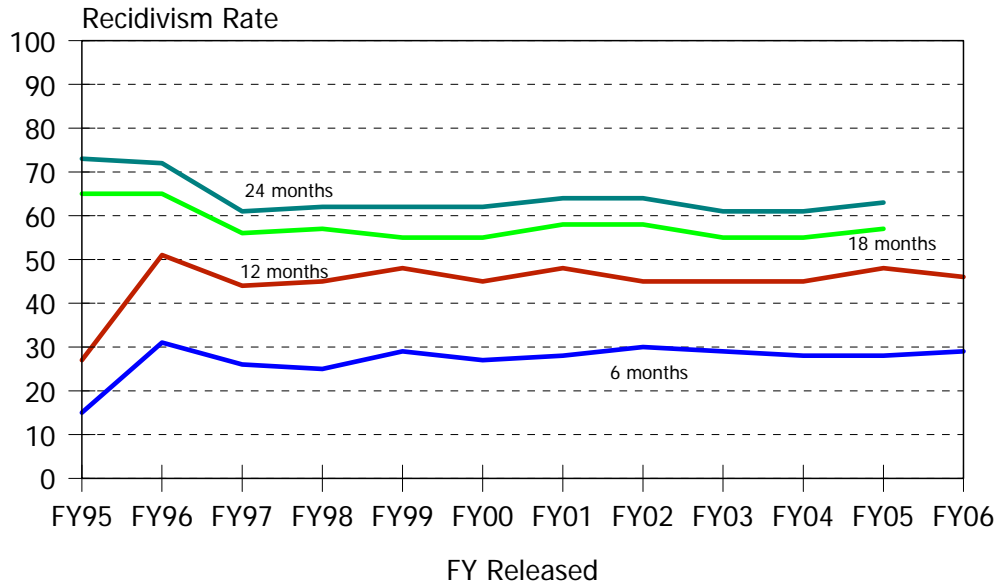
Time Period	N. Released	Months Since Release			
		6 Months	12 Months	18 Months	24 Months
FY 97	330	40%	56%	66%	72%
FY 98	130	37%	52%	65%	69%
FY 99	98	41%	60%	69%	73%
FY 00	122	34%	54%	65%	73%
FY 01	115	27%	48%	55%	63%
FY 02	124	34%	57%	64%	70%
FY 03	129	30%	51%	65%	70%
FY 04	146	31%	50%	60%	68%
FY 05	139	32%	53%	62%	72%
FY 06	148	34%	53%	.	.

Historical Profile of Youth Released by Fiscal Year

Average	Total	Fiscal Year Released										
		97	98	99	00	01	02	03	04	05	06	
Ferris School LOS in months	7.3	4.2	5.5	10.9	9.7	8.5	8.6	8.4	7.9	7.5	8.0	
Placement episode LOS in months	10.2	6.7	10.1	15.0	11.7	12.0	11.3	10.6	10.9	10.3	10.4	
No. of prior detention admissions	3.5	2.4	3.0	3.0	3.5	3.0	3.6	3.7	4.2	4.8	4.3	
No. of prior incarceration admissions	2.5	2.0	2.5	2.4	2.8	3.0	2.5	2.3	2.9	2.9	2.8	
Number of prior felony arrests	3.5	4.0	4.0	3.8	3.3	3.0	3.2	3.1	3.2	3.2	3.0	
Number of prior arrests	8.8	9.5	9.2	9.0	8.2	7.2	8.4	8.4	8.8	9.2	9.1	

The Ferris School for Boys, a DYRS facility, provides programs and services to create a total learning environment for boys. The Ferris School switched to a therapeutic community in May of 1997.

Display 3, New Castle County Detention Center Adjudicated Felony Recidivism Rates



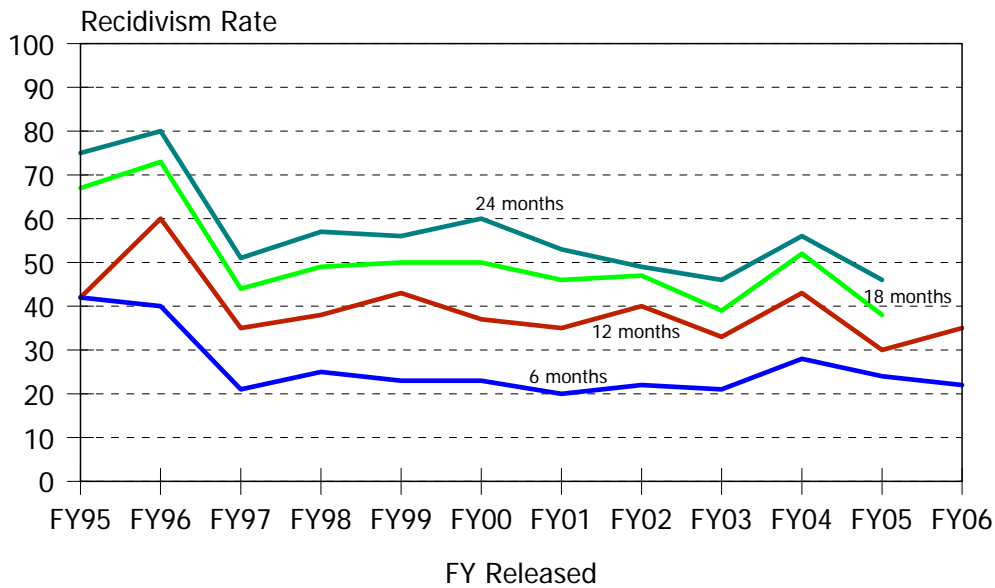
Time Period	N. Released	Months Since Release			
		6 Months	12 Months	18 Months	24 Months
FY 97	88	26%	44%	56%	61%
FY 98	159	25%	45%	57%	62%
FY 99	224	29%	48%	55%	62%
FY 00	297	27%	43%	55%	66%
FY 01	312	27%	45%	55%	62%
FY 02	273	28%	48%	58%	64%
FY 03	270	30%	45%	58%	64%
FY 04	321	28%	45%	55%	61%
FY 05	276	28%	48%	57%	63%
FY 06	245	29%	46%	.	.

Historical Profile of Youth Released by Fiscal Year

Average	Total	Fiscal Year Released									
		97	98	99	00	01	02	03	04	05	06
NCCDC LOS in months	1.7	2.3	2.0	2.0	1.7	1.8	1.7	1.5	1.4	1.4	1.3
Placement episode LOS in months	6.3	8.9	7.2	7.9	6.7	6.8	6.0	5.6	4.6	5.2	5.1
No. of prior detention admissions	3.4	2.5	2.7	3.0	3.3	3.3	3.3	3.6	3.9	4.1	3.4
No. of prior incarceration admissions	2.4	1.2	1.9	2.2	2.5	2.5	2.4	2.4	2.4	2.5	2.6
Number of prior felony arrests	2.2	2.6	2.6	2.9	2.5	2.3	1.8	2.1	1.9	2.0	2.1
Number of prior arrests	7.2	6.1	6.4	7.2	6.6	6.7	7.0	7.3	7.4	8.2	7.9

The New Castle County Detention Center, a DYRS facility, provides health, professional care, professional counseling and educational programming for juveniles. Information presented in this document for this facility relates solely to adjudicated juveniles held there who were then released to directly to the community, or to a Level IV or Level V placement.

Display 4, Stevenson House Detention Center Adjudicated Felony Recidivism Rates



Time Period	N. Released	Months Since Release			
		6 Months	12 Months	18 Months	24 Months
FY 97	43	21%	35%	44%	51%
FY 98	95	25%	38%	49%	57%
FY 99	115	23%	43%	50%	56%
FY 00	144	23%	37%	50%	60%
FY 01	181	20%	35%	46%	53%
FY 02	181	22%	40%	47%	49%
FY 03	159	21%	33%	39%	46%
FY 04	206	28%	43%	52%	56%
FY 05	119	24%	30%	38%	46%
FY 06	158	22%	35%	.	.

Historical Profile of Youth Released by Fiscal Year

Average	Total	Fiscal Year Released										
		97	98	99	00	01	02	03	04	05	06	
Stevenson House LOS in months	1.6	0.9	1.3	1.5	1.8	1.6	2.1	1.6	1.4	1.9	1.5	
Placement episode LOS in months	7.4	4.1	4.7	8.2	8.2	8.7	9.5	6.7	6.5	6.2	6.3	
No. of prior detention admissions	2.1	1.3	1.5	1.7	1.8	2.0	2.3	2.0	2.4	2.5	2.2	
No. of prior incarceration admissions	2.0	0.8	1.4	2.1	1.9	2.4	2.4	1.9	2.1	1.8	2.2	
Number of prior felony arrests	2.0	1.6	1.8	2.2	2.1	2.3	2.0	1.9	2.0	1.7	1.9	
Number of prior arrests	7.0	6.7	7.4	7.0	6.7	6.7	6.9	6.9	7.0	7.4	7.6	

The Stevenson House Detention Center, a DYRS facility, provides health, professional care, professional counseling and educational programming for juveniles. Information presented in this document for this facility relates solely to adjudicated juveniles held there who were then released directly to the community, or to a Level IV or Level V placement.

Display 5, Level V Small Program Felony Recidivism Rates

C.C.A., South West Indiana Youth Village,
Drug and Alcohol Felony Recidivism Rates

Time Period	N. Released	Months Since Release			
		6 Months	12 Months	18 Months	24 Months
FY 00	4	50%	100%	100%	100%
FY 01	4	50%	50%	50%	75%
FY 02	1	0%	0%	0%	100%
FY 03	1	100%	100%	100%	100%
FY 05	3	0%	0%	0%	0%
FY 06	7	14%	14%	.	.

South West Indiana Youth Village provides pre-vocational, educational, strict behavioral modification, and specialized substance abuse programming for offenders 12 to 18 years of age.¹⁰

C.C.A., South West Indiana Youth Village, Secure Felony Recidivism Rates

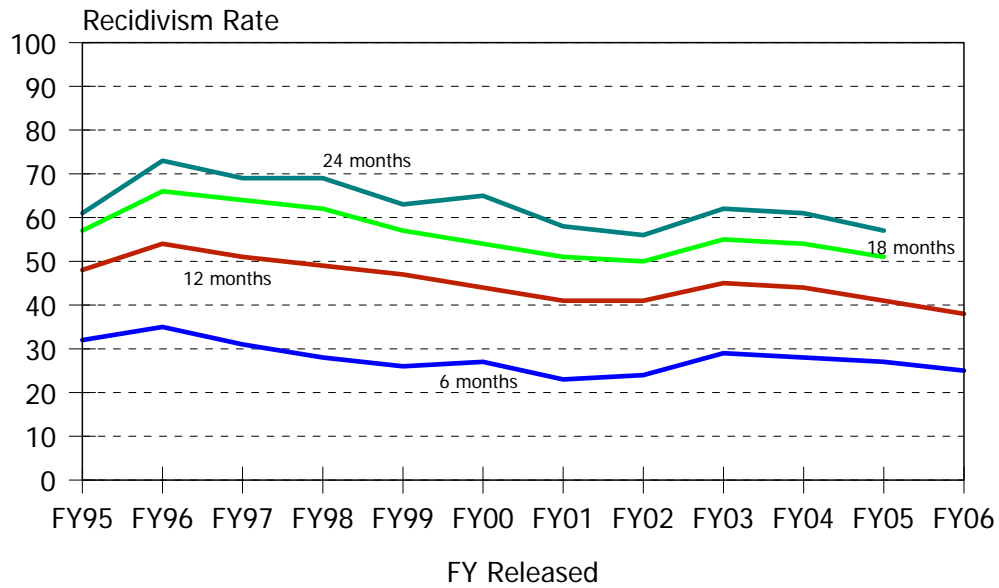
Time Period	N. Released	Months Since Release			
		6 Months	12 Months	18 Months	24 Months
FY 00	4	50%	100%	100%	100%
FY 01	4	50%	50%	50%	50%
FY 02	2	50%	50%	50%	50%
FY 03	2	100%	100%	100%	100%
FY 05	5	0%	0%	0%	0%

South West Indiana Youth Village provides secure care and substance abuse treatment program for offenders 12 to 18 years of age.

¹⁰ The program descriptions contained in this document were provided by DYRS.

Intentionally Blank

Display 6, Level IV Felony Recidivism Rates



Level IV Felony Recidivism Rates

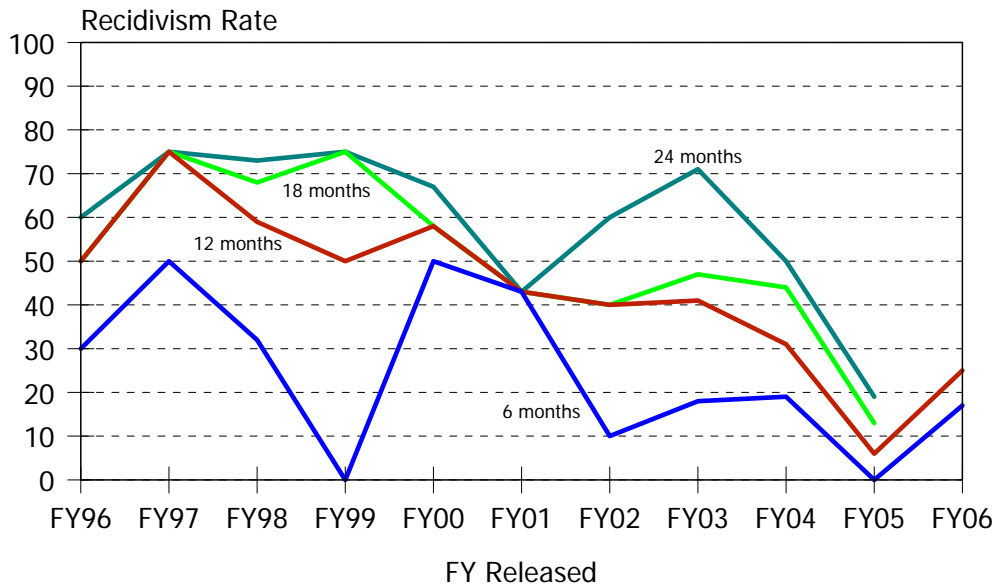
Time Period	N. Released	Months Since Release			
		6 Months	12 Months	18 Months	24 Months
FY 97	299	31%	51%	64%	69%
FY 98	495	28%	49%	62%	69%
FY 99	534	26%	47%	57%	63%
FY 00	528	27%	44%	54%	65%
FY 01	518	23%	41%	51%	58%
FY 02	635	24%	41%	50%	56%
FY 03	499	29%	45%	55%	62%
FY 04	467	28%	44%	54%	61%
FY 05	443	27%	41%	51%	57%
FY 06	592	25%	38%	.	.

Historical Profile of Youth Released by Fiscal Year

Average	Total	Fiscal Year Released										
		97	98	99	00	01	02	03	04	05	06	
Level IV LOS in months	3.8	6.7	4.5	4.4	3.8	4.2	3.3	3.2	3.1	3.3	2.8	
Placement episode LOS in months	5.5	8.7	5.9	6.0	5.2	6.0	4.8	4.7	4.7	5.0	4.5	
No. of prior detention admissions	2.9	2.3	2.5	2.8	2.8	2.6	2.8	2.9	3.3	3.5	3.2	
No. of prior incarceration admissions	2.0	1.5	1.5	2.1	2.1	2.1	1.9	1.9	2.0	2.0	2.3	
Number of prior felony arrests	2.0	2.8	2.4	2.4	2.1	2.0	1.6	1.9	1.8	1.8	1.8	
Number of prior arrests	6.8	7.1	6.6	6.8	6.2	6.2	6.4	6.8	7.1	7.2	7.4	

Level IV Recidivism Rates

Display 7, Chamberlain Academy, High Impact, Felony Recidivism Rates



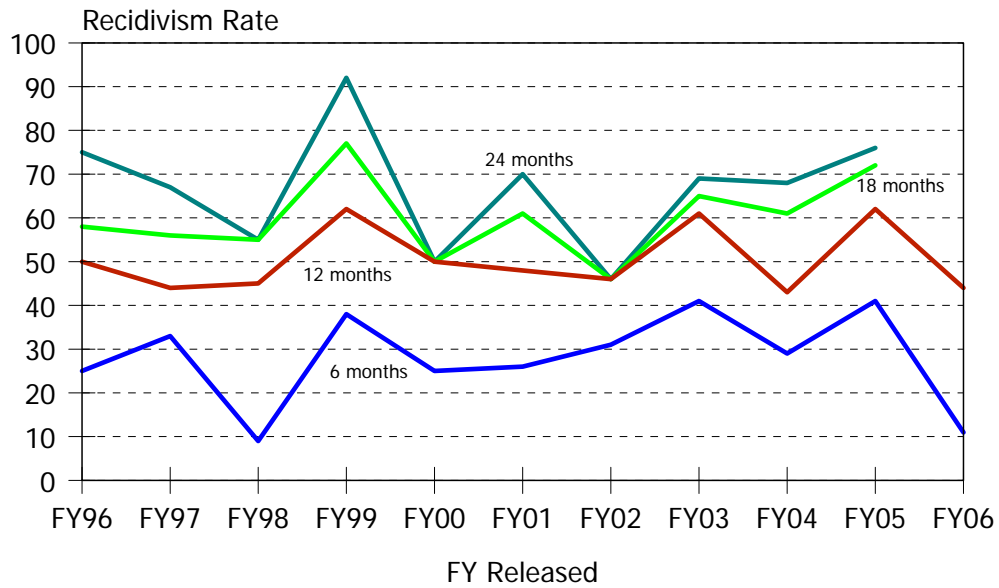
Time Period	N. Released	Months Since Release			
		6 Months	12 Months	18 Months	24 Months
FY 97	8	50%	75%	75%	75%
FY 98	22	32%	59%	68%	73%
FY 99	4	0%	50%	75%	75%
FY 00	12	50%	58%	58%	67%
FY 01	7	43%	43%	43%	43%
FY 02	10	10%	40%	40%	60%
FY 03	17	18%	41%	47%	71%
FY 04	16	19%	31%	44%	50%
FY 05	16	0%	6%	13%	19%
FY 06	12	17%	25%	.	.

Historical Profile of Youth Released by Fiscal Year

Average	Total	Fiscal Year Released										
		97	98	99	00	01	02	03	04	05	06	
Chamberlain Academy LOS in months	4.6	6.3	5.8	6.4	5.1	4.1	4.7	4.1	4.0	3.3	3.8	
Placement episode LOS in months	7.3	11.1	8.3	11.9	7.7	6.0	6.6	5.9	6.8	6.5	6.0	
No. of prior detention admissions	2.8	2.0	2.8	2.3	2.0	2.4	2.4	3.2	3.1	3.3	3.8	
No. of prior incarceration admissions	2.1	3.0	1.3	1.5	0.8	2.1	1.0	2.4	2.8	2.7	2.8	
Number of prior felony arrests	2.2	3.3	2.4	2.3	2.0	2.3	2.1	2.1	2.5	1.5	1.9	
Number of prior arrests	7.5	11.8	5.9	5.3	5.7	7.4	6.7	8.8	7.2	7.3	9.9	

Chamberlain Academy's High Impact program provides short-term coed group programming for juveniles with minimal Court involvement and few post-adjudication placements.

Display 8, Clarinda Academy Felony Recidivism Rates



Time Period	N. Released	Months Since Release			
		6 Months	12 Months	18 Months	24 Months
FY 97	12	25%	50%	58%	75%
FY 98	9	33%	44%	56%	67%
FY 99	11	9%	45%	55%	55%
FY 00	13	38%	62%	77%	92%
FY 01	23	26%	48%	61%	70%
FY 02	13	31%	46%	46%	46%
FY 03	49	41%	61%	65%	69%
FY 04	28	29%	43%	61%	68%
FY 05	29	41%	62%	72%	76%
FY 06	9	11%	44%	.	.

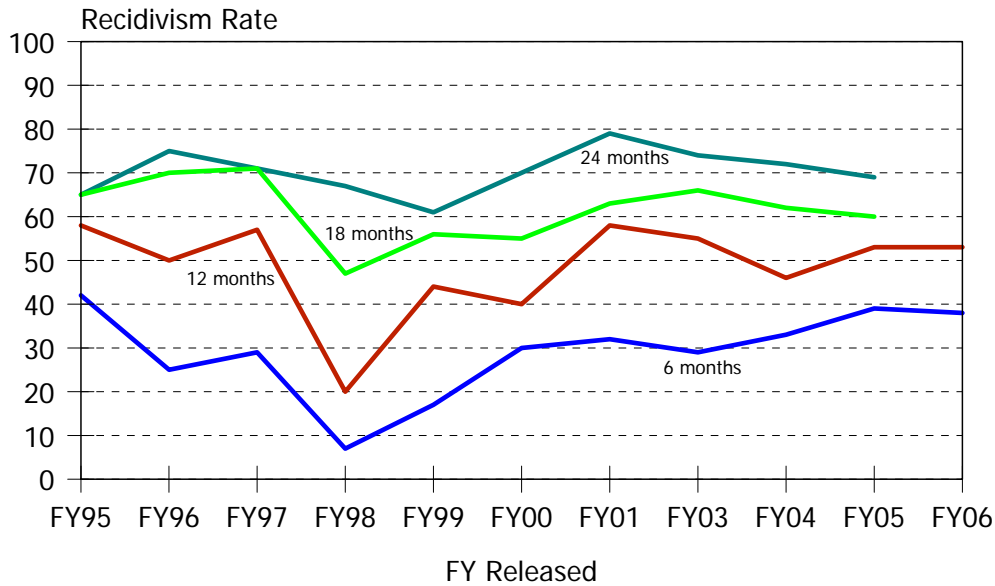
Historical Profile of Youth Released by Fiscal Year

Average	Total	Fiscal Year Released									
		97	98	99	00	01	02	03	04	05	06
Clarinda Academy LOS in months	6.9	10.6	10.4	10.6	11.3	10.3	8.5	5.1	5.1	4.2	4.9
Placement episode LOS in months	9.6	14.0	12.2	13.7	13.8	12.5	15.9	7.0	7.1	5.9	8.1
No. of prior detention admissions	3.4	2.3	2.2	2.2	1.3	2.6	3.2	4.2	3.9	4.3	3.3
No. of prior incarceration admissions	2.5	3.0	1.9	2.1	0.8	2.4	2.5	2.4	3.2	2.7	2.7
Number of prior felony arrests	2.5	3.3	3.3	3.5	3.0	2.3	2.6	2.4	2.4	2.3	1.8
Number of prior arrests	7.9	7.4	8.1	6.6	5.3	6.7	7.4	8.2	8.2	9.1	9.3

Clarinda Academy provides normative culture, chemical abuse counseling, victim awareness and educational programming for males between the ages of 13 and 18.

Level IV Recidivism Rates

Display 9, Glen Mills Schools Felony Recidivism Rates



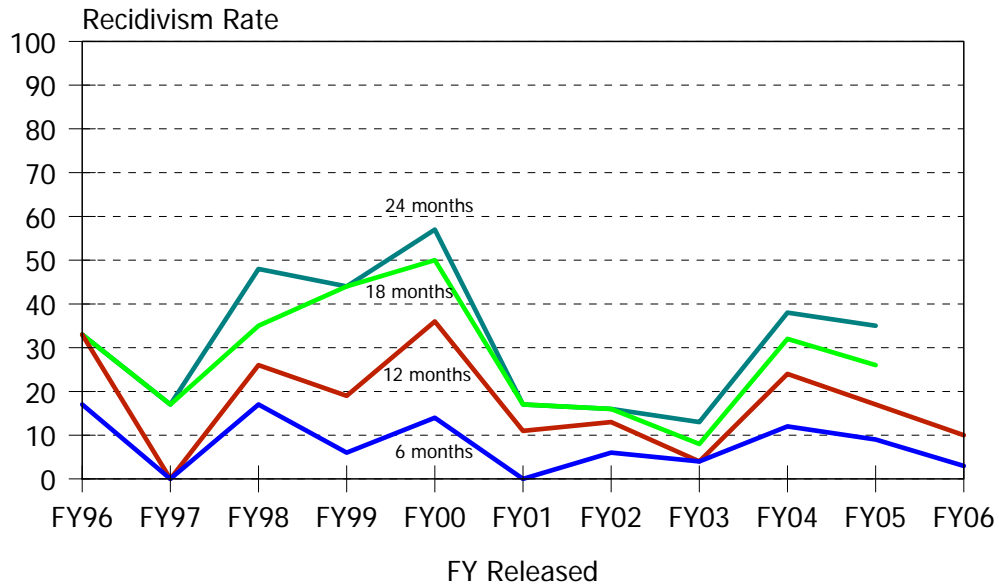
Time Period	N. Released	Months Since Release			
		6 Months	12 Months	18 Months	24 Months
FY 96	20	25%	50%	70%	75%
FY 97	14	29%	57%	71%	71%
FY 98	15	7%	20%	47%	67%
FY 99	18	17%	44%	56%	61%
FY 00	20	30%	40%	55%	70%
FY 01	19	32%	58%	63%	79%
FY 03	38	29%	55%	66%	74%
FY 04	39	33%	46%	62%	72%
FY 05	46	39%	53%	60%	69%
FY 06	32	38%	53%	.	.

Historical Profile of Youth Released by Fiscal Year

Average	Total	Fiscal Year Released									
		97	98	99	00	01	03	04	05	06	
Glen Mills Schools LOS in months	7.3	12.3	12.4	11.8	11.7	10.8	5.6	5.0	5.1	3.6	
Placement episode LOS in months	9.1	14.4	14.6	13.8	13.1	13.6	7.5	6.3	6.6	5.4	
No. of prior detention admissions	3.2	2.2	2.3	2.4	3.6	2.9	3.1	3.4	4.1	3.2	
No. of prior incarceration admissions	2.1	1.2	1.0	1.9	2.0	2.1	2.4	2.1	2.9	2.0	
Number of prior felony arrests	3.0	3.3	2.9	3.9	3.9	3.9	2.6	2.7	3.2	2.3	
Number of prior arrests	7.3	7.7	6.7	6.9	7.5	7.6	6.9	6.9	8.4	6.3	

Glen Mills Schools provide normative culture, vocational, athletic and educational programming for males between the ages of 14 and 18. No Delaware juvenile offenders were sent to Glen Mills Schools during FY02.

Display 10, Grace Cottage Felony Recidivism Rates



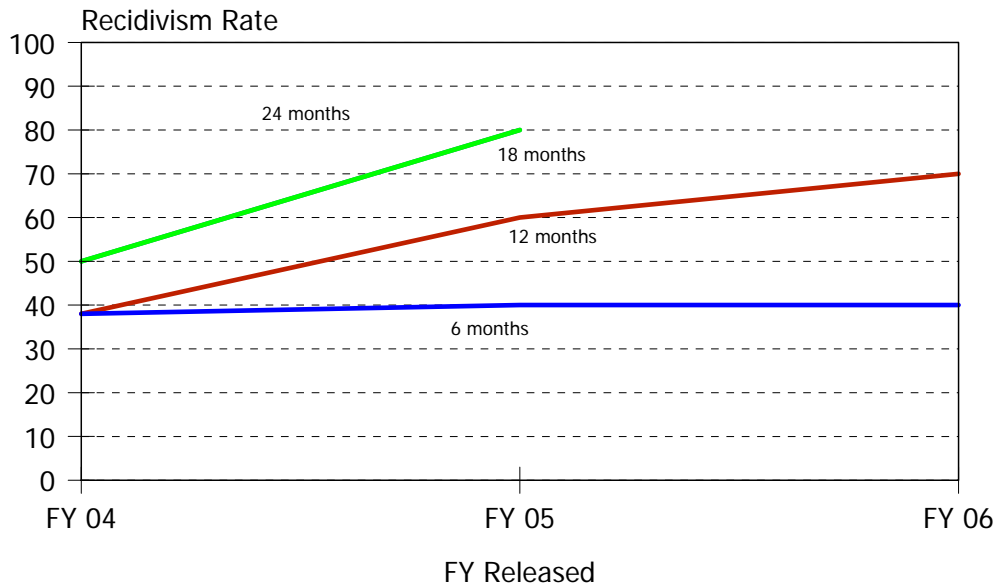
Time Period	N. Released	Months Since Release			
		6 Months	12 Months	18 Months	24 Months
FY 97	12	0%	0%	17%	17%
FY 98	23	17%	26%	35%	48%
FY 99	16	6%	19%	44%	44%
FY 00	14	14%	36%	50%	57%
FY 01	18	0%	11%	17%	17%
FY 02	32	6%	13%	16%	16%
FY 03	24	4%	4%	8%	13%
FY 04	34	12%	24%	32%	38%
FY 05	23	9%	17%	26%	35%
FY 06	97	3%	10%	.	.

Historical Profile of Youth Released by Fiscal Year

Average	Total	Fiscal Year Released									
		97	98	99	00	01	02	03	04	05	06
Grace Cottage LOS in months	3.0	9.7	6.6	4.6	4.9	5.8	3.0	1.9	2.0	1.5	1.3
Placement episode LOS in months	5.2	11.6	9.0	7.7	8.0	8.0	8.3	5.5	3.3	3.6	2.5
No. of prior detention admissions	3.6	4.4	3.4	5.1	3.4	2.7	3.3	2.9	3.1	4.4	3.8
No. of prior incarceration admissions	1.8	1.0	1.5	2.7	2.1	1.9	2.0	2.2	1.5	1.9	1.8
Number of prior felony arrests	1.2	1.6	1.6	1.3	1.4	1.4	1.2	1.2	1.2	1.0	0.9
Number of prior arrests	6.6	6.6	7.2	7.8	6.3	5.9	6.2	6.8	6.9	7.3	6.5

Grace Cottage provided behavior management and educational programming for females between the ages of 13 and 18. Grace Cottage did not operate from December 24, 2003, through January 18, 2005.

Display 11, Ministry of Caring, House of Joseph II, Felony Recidivism Rates



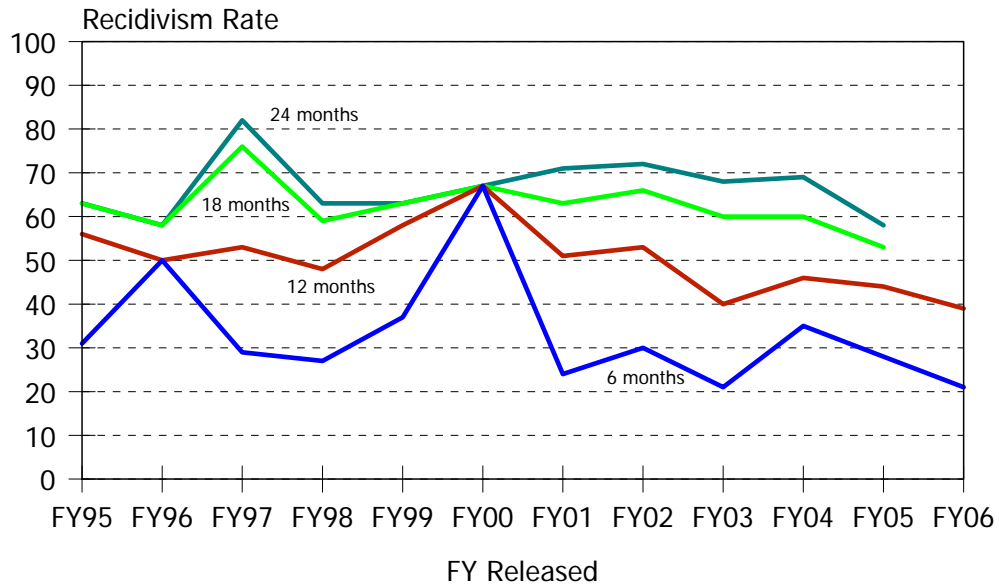
Time Period	N. Released	Months Since Release			
		6 Months	12 Months	18 Months	24 Months
FY 04	8	38%	38%	50%	50%
FY 05	10	40%	60%	80%	80%
FY 06	10	40%	70%	.	.

Historical Profile of Youth Released by Fiscal Year

Average	Total	Fiscal Year Released		
		04	05	06
Ministry of Caring LOS in months	2.8	1.4	3.6	3.1
Placement episode LOS in months	10.2	10.3	8.6	11.7
No. of prior detention admissions	7.4	5.1	8.1	8.4
No. of prior incarceration admissions	6.6	5.0	7.2	7.4
Number of prior felony arrests	2.4	2.0	2.5	2.5
Number of prior arrests	9.9	8.0	11.1	10.3

The Ministry of Caring’s House of Joseph II provides a residence for homeless males between the ages of 16 and 18 years of age who are transitioning out of the Ferris School for Boys into adulthood.

Display 12, Mowlds Cottage Felony Recidivism Rates



Time Period	N. Released	Months Since Release			
		6 Months	12 Months	18 Months	24 Months
FY 97	17	29%	53%	76%	82%
FY 98	56	27%	48%	59%	63%
FY 99	19	37%	58%	63%	63%
FY 00	3	67%	67%	67%	67%
FY 01	41	24%	51%	63%	71%
FY 02	48	30%	53%	66%	72%
FY 03	42	21%	40%	60%	68%
FY 04	52	35%	46%	60%	69%
FY 05	82	28%	44%	53%	58%
FY 06	61	21%	39%	.	.

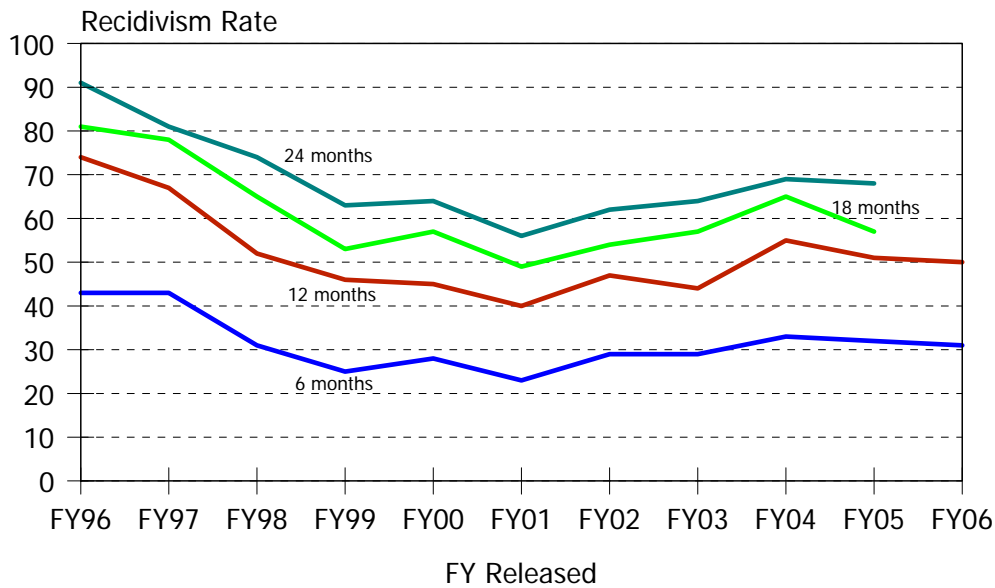
Historical Profile of Youth Released by Fiscal Year

Average	Total	Fiscal Year Released										
		97	98	99	00	01	02	03	04	05	06	
Mowlds Cottage LOS in months	0.6	0.8	0.7	1.2	1.2	0.7	0.5	0.6	0.3	0.4	0.4	
Placement episode LOS in months	2.5	0.9	2.1	6.0	5.2	3.0	2.5	1.5	1.6	1.6	4.5	
No. of prior detention admissions	3.2	1.4	1.8	2.7	5.0	3.3	2.9	3.0	3.6	3.7	4.0	
No. of prior incarceration admissions	2.4	0.5	1.6	2.4	5.7	3.0	1.9	2.1	2.1	2.5	3.7	
Number of prior felony arrests	1.9	2.5	2.2	2.5	3.7	2.2	1.5	1.4	1.5	1.8	1.8	
Number of prior arrests	6.9	6.2	7.0	6.0	10.7	6.6	5.8	6.0	7.2	7.3	7.6	

While Mowlds Cottage traditionally provided programming for males transitioning from the Ferris School for Boys, since FY02 only youth who were serving administrative holds or were returned from other programs were admitted directly to Mowlds Cottage. Ferris School flow-downs are not included here. Ferris School flow-downs are shown in the Ferris School analysis on page 18.

Level IV Recidivism Rates

Display 13, Snowden Cottage Felony Recidivism Rates



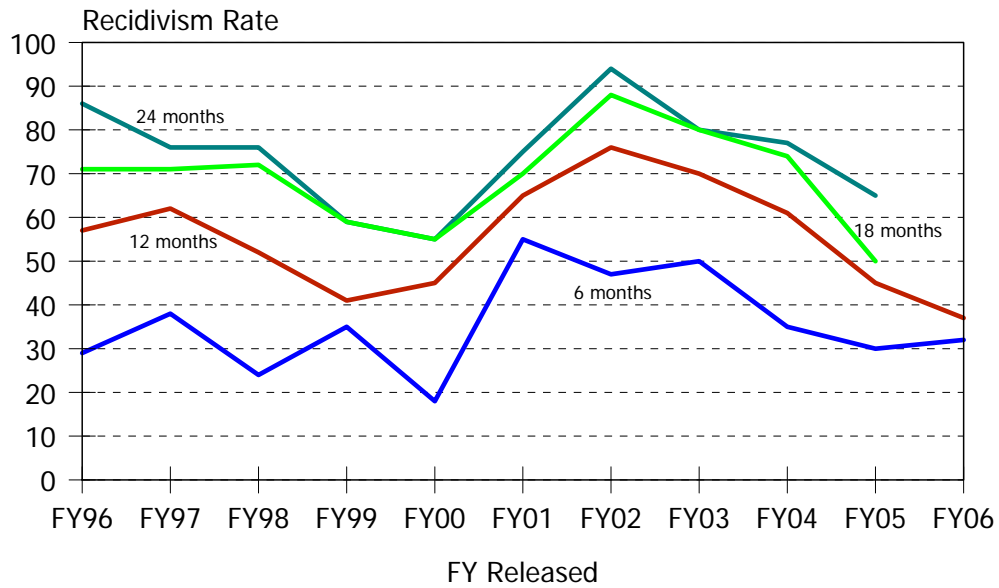
Time Period	N. Released	Months Since Release			
		6 Months	12 Months	18 Months	24 Months
FY 97	72	43%	67%	78%	81%
FY 98	112	31%	52%	65%	74%
FY 99	150	25%	46%	53%	63%
FY 00	143	28%	45%	57%	64%
FY 01	131	23%	40%	49%	56%
FY 02	199	29%	47%	54%	62%
FY 03	138	29%	44%	57%	64%
FY 04	74	33%	55%	65%	69%
FY 05	37	32%	51%	57%	68%
FY 06	116	31%	50%	.	.

Historical Profile of Youth Released by Fiscal Year

Average	Total	Fiscal Year Released										
		97	98	99	00	01	02	03	04	05	06	
Snowden Cottage LOS in months	1.3	2.3	1.5	1.3	1.4	1.5	1.0	1.0	1.2	1.3	1.6	
Placement episode LOS in months	2.6	3.7	3.1	2.8	2.9	2.8	2.0	1.6	2.5	3.0	3.1	
No. of prior detention admissions	2.6	2.2	2.5	2.6	2.7	2.5	2.5	2.7	3.0	2.7	2.8	
No. of prior incarceration admissions	1.8	1.7	1.5	1.7	1.9	1.8	1.7	2.0	1.7	1.4	2.0	
Number of prior felony arrests	2.0	2.8	2.5	2.4	1.9	1.9	1.6	1.7	1.7	1.5	1.8	
Number of prior arrests	6.6	6.6	6.8	7.0	5.9	5.7	6.4	6.7	7.1	6.6	7.7	

Snowden Cottage provides a short-term residential programming for males with educational services on-site. Snowden Cottage did not operate from December 24, 2003, through January 18, 2005.

Display 14, Springfield Academy Felony Recidivism Rates



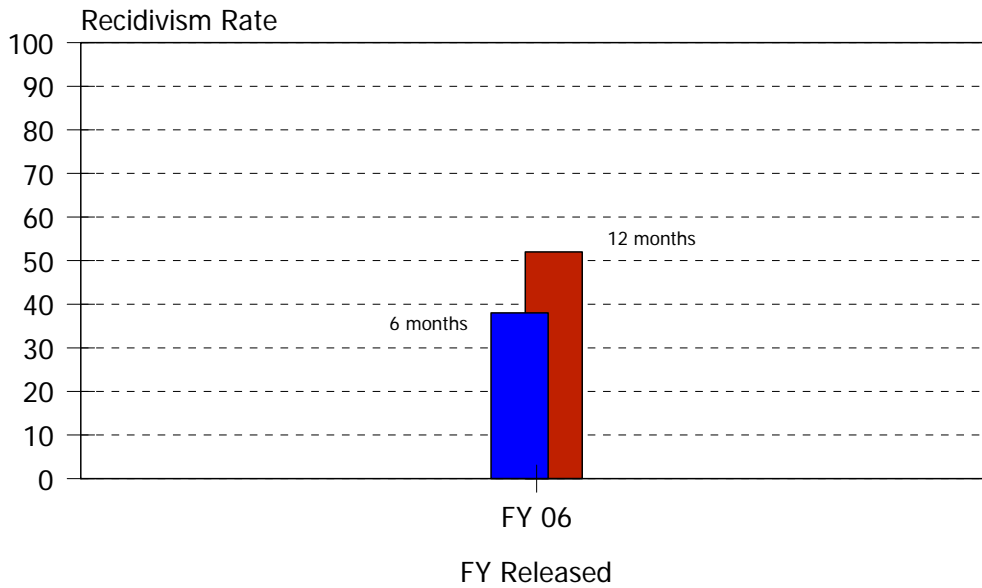
Time Period	N. Released	Months Since Release			
		6 Months	12 Months	18 Months	24 Months
FY 97	34	38%	62%	71%	76%
FY 98	29	24%	52%	72%	76%
FY 99	17	35%	41%	59%	59%
FY 00	11	18%	45%	55%	55%
FY 01	20	55%	65%	70%	75%
FY 02	17	47%	76%	88%	94%
FY 03	10	50%	70%	80%	80%
FY 04	23	35%	61%	74%	77%
FY 05	20	30%	45%	50%	65%
FY 06	19	32%	37%	.	.

Historical Profile of Youth Released by Fiscal Year

Average	Total	Fiscal Year Released										
		97	98	99	00	01	02	03	04	05	06	
Springfield Academy LOS in months	7.5	9.8	9.0	9.1	8.3	8.4	7.9	5.1	4.5	5.2	4.8	
Placement episode LOS in months	9.8	12.4	11.0	11.6	10.0	11.1	10.7	7.4	7.2	6.9	6.9	
No. of prior detention admissions	3.2	2.6	2.1	2.4	2.5	2.2	4.5	4.0	4.9	3.7	3.7	
No. of prior incarceration admissions	2.1	1.7	1.7	1.6	1.8	1.7	2.9	1.9	2.7	2.5	2.5	
Number of prior felony arrests	2.7	3.4	2.7	2.8	2.8	2.9	3.2	2.8	2.6	1.9	2.1	
Number of prior arrests	8.2	8.6	7.8	7.2	7.4	6.7	9.0	9.4	8.2	8.2	9.2	

Springfield Academy provides chemical abuse counseling, victim awareness, educational groups and normative culture programming for males between the ages of 11 and 18.

Display 15, Summit Academy Felony Recidivism Rates



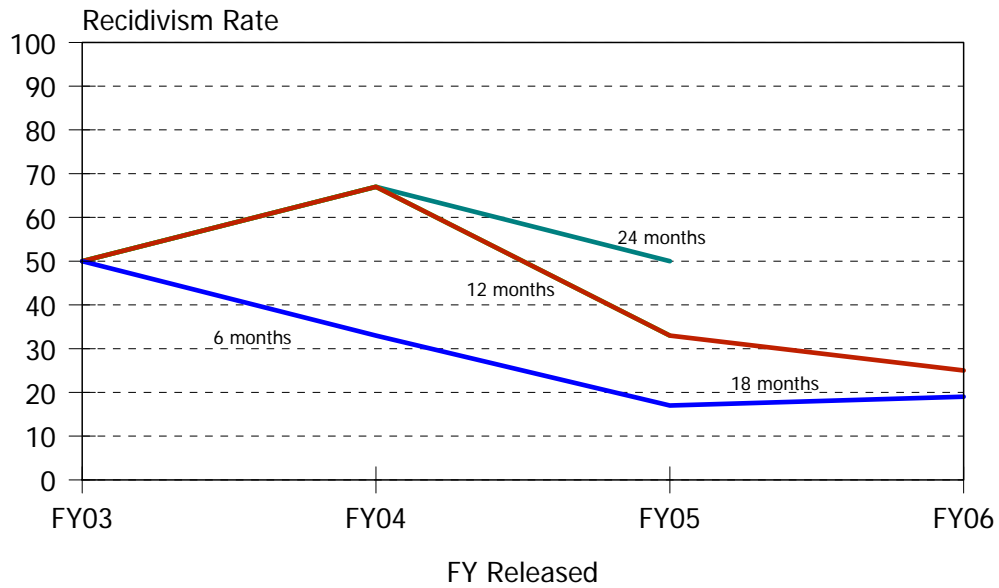
Time Period	N. Released	Months Since Release			
		6 Months	12 Months	18 Months	24 Months
FY 06	21	38%	52%	.	.

Historical Profile of Youth Released by Fiscal Year

Average	Fiscal Year Released	
	Total	06
Summit Academy LOS in months	3.4	3.4
Placement episode LOS in months	4.4	4.4
No. of prior detention admissions	3.2	3.2
No. of prior incarceration admissions	3.9	3.9
Number of prior felony arrests	2.8	2.8
Number of prior arrests	8.7	8.7

Summit Academy provides drug and alcohol counseling, educational program with transferable college credits, and normative culture programming for males between the ages of 14 and 18.

Display 16, Today Inc., New Dawn, Felony Recidivism Rates



Time Period	N. Released	Months Since Release			
		6 Months	12 Months	18 Months	24 Months
FY 03	4	50%	50%	50%	50%
FY 04	3	33%	67%	67%	67%
FY 05	6	17%	33%	33%	50%
FY 06	16	19%	25%		

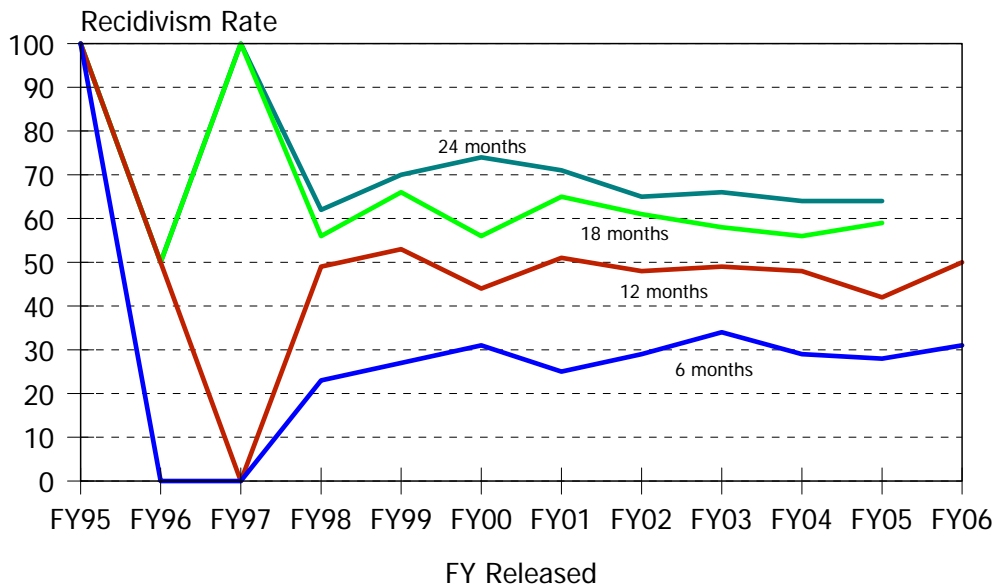
Historical Profile of Youth Released by Fiscal Year

Average	Total	Fiscal Year Released			
		03	04	05	06
Today, Inc., New Dawn LOS	1.6	1.1	1.3	1.4	1.9
Placement episode LOS in months	2.6	1.4	3.1	2.4	2.9
Number of prior detention admissions	1.9	1.8	3.7	1.7	1.7
Number of prior incarceration admissions	1.7	0.8	2.3	1.8	1.7
Number of prior felony arrests	1.1	0.8	1.7	1.2	1.1
Number of prior arrests	6.7	6.5	9.0	5.7	6.8

Today, Inc., New Dawn provides short-term (30 days) alcohol and substance abuse treatment for juveniles between the ages of 13 and 18 with short histories of alcohol or marijuana dependence.

Level IV Recidivism Rates

Display 17, VisionQuest, Boot Camp, Felony Recidivism Rates



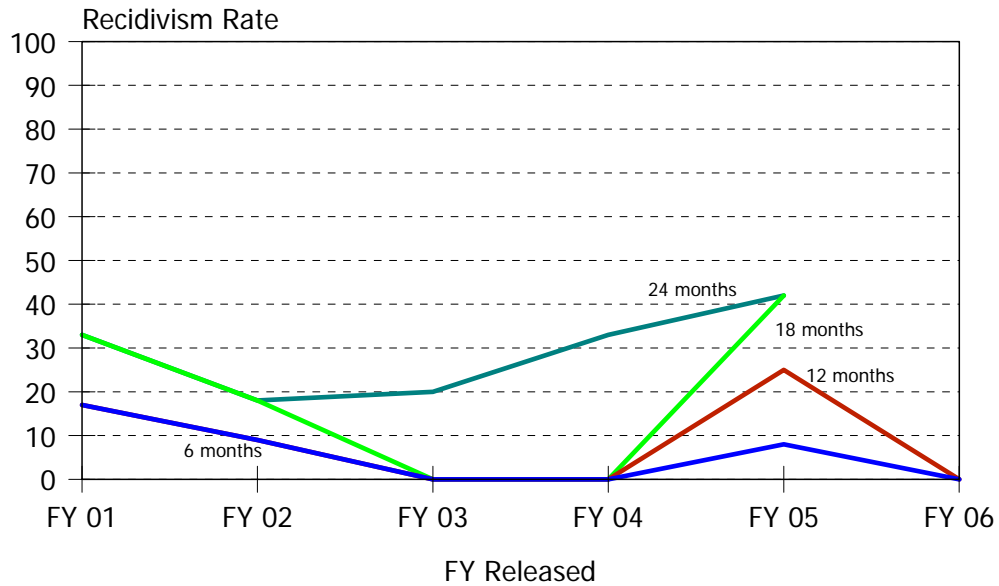
Time Period	N. Released	Months Since Release			
		6 Months	12 Months	18 Months	24 Months
FY 97	1	0%	0%	100%	100%
FY 98	39	23%	49%	56%	62%
FY 99	80	27%	53%	66%	70%
FY 00	93	31%	44%	56%	74%
FY 01	99	25%	51%	65%	71%
FY 02	102	29%	48%	61%	65%
FY 03	109	34%	49%	58%	66%
FY 04	135	29%	48%	56%	64%
FY 05	131	28%	42%	59%	64%
FY 06	65	31%	50%	.	.

Historical Profile of Youth Released by Fiscal Year

Average	Total	Fiscal Year Released										
		97	98	99	00	01	02	03	04	05	06	
VisionQuest Boot Camp LOS	2.0	3.0	2.9	3.0	2.4	2.4	1.8	1.7	1.4	1.6	1.6	
Placement episode LOS in months	3.4	9.0	4.9	5.4	4.1	4.1	3.1	2.9	2.3	2.9	3.0	
No. of prior detention admissions	2.8	4.0	2.9	2.8	2.8	2.4	2.8	2.6	3.1	3.0	2.5	
No. of prior incarceration admissions	1.8	5.0	1.9	2.5	2.1	1.8	1.8	1.5	1.6	1.5	1.8	
Number of prior felony arrests	1.9	0.0	2.0	2.3	2.2	2.1	1.8	1.7	1.6	1.6	1.9	
Number of prior arrests	6.6	7.0	6.1	6.6	6.0	6.5	6.4	6.4	7.0	6.7	7.1	

VisionQuest Boot Camp provides a focus on discipline in addition to education, counseling and community services in highly structured 30 and 90 day programs for juveniles between the ages of 13 and 18.

Display 18, VisionQuest, Madalyn Program, Felony Recidivism Rates



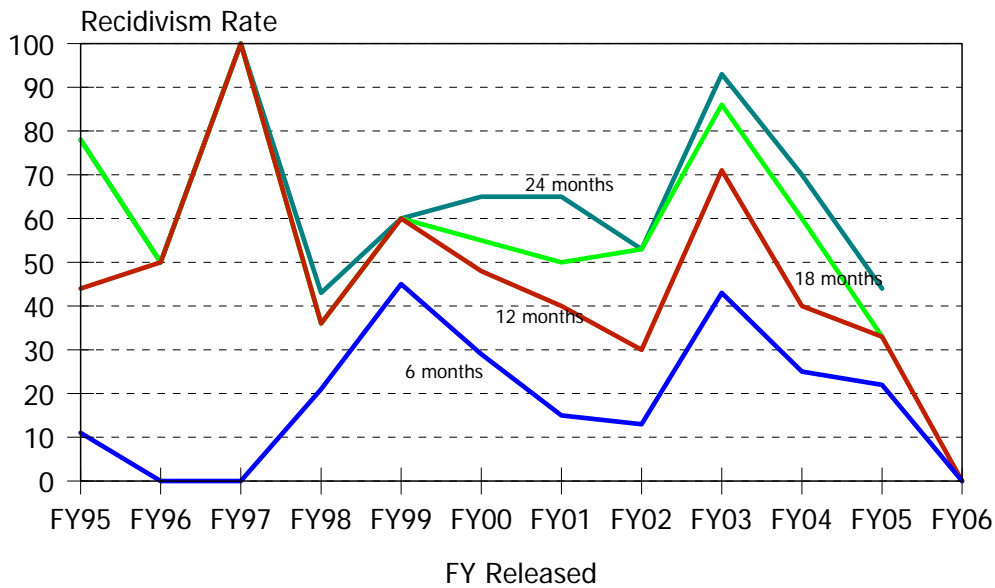
Time Period	N. Released	Months Since Release			
		6 Months	12 Months	18 Months	24 Months
FY 01	12	17%	17%	33%	33%
FY 02	11	9%	9%	18%	18%
FY 03	5	0%	0%	0%	20%
FY 04	3	0%	0%	0%	33%
FY 05	12	8%	25%	42%	42%
FY 06	10	0%	0%	.	.

Historical Profile of Youth Released by Fiscal Year

Average	Total	Fiscal Year Released					
		01	02	03	04	05	06
VisionQuest Madalyn LOS in months	3.3	3.3	4.0	3.1	2.0	3.1	3.2
Placement episode LOS in months	6.0	5.7	6.4	6.0	3.3	6.0	6.8
Number of prior detention admissions	3.5	3.3	4.1	2.2	2.0	4.2	3.3
Number of prior incarceration admissions	2.1	1.9	3.0	2.0	2.0	1.3	2.1
Number of prior felony arrests	1.1	0.7	1.6	0.6	1.7	0.9	1.3
Number of prior arrests	6.9	5.9	6.6	5.6	7.0	7.8	7.8

VisionQuest’s Madalyn Program is a residential program designed to address the specific needs of troubled teenage girls.

Display 19, VisionQuest, Buffalo Soldiers Academy, Felony Recidivism Rates



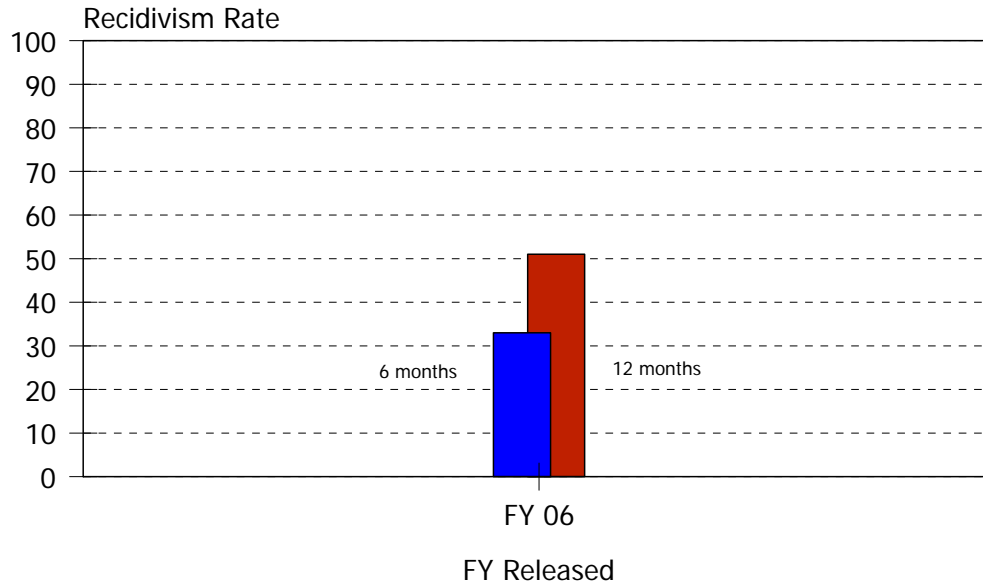
Time Period	N. Released	Months Since Release			
		6 Months	12 Months	18 Months	24 Months
FY 97	1	0%	100%	100%	100%
FY 98	14	21%	36%	36%	43%
FY 99	20	45%	60%	60%	60%
FY 00	21	29%	48%	55%	65%
FY 01	20	15%	40%	50%	65%
FY 02	30	13%	30%	53%	53%
FY 03	14	43%	71%	86%	93%
FY 04	20	25%	40%	60%	70%
FY 05	9	22%	33%	33%	44%
FY 06	2	0%	0%	.	.

Historical Profile of Youth Released by Fiscal Year

Average	Total	Fiscal Year Released									
		97	98	99	00	01	02	03	04	05	06
VisionQuest Buffalo Soldiers LOS	4.2	11.3	5.6	5.8	5.9	4.5	3.5	2.9	2.1	2.3	1.5
Placement episode LOS in months	7.5	14.0	7.3	10.3	9.0	8.5	5.7	8.1	5.0	3.4	7.9
No. of prior detention admissions	3.7	3.0	3.1	3.6	3.5	2.9	3.2	4.4	5.0	4.4	7.0
No. of prior incarceration admissions	2.5	1.0	1.7	2.6	3.0	2.2	2.8	2.4	2.5	1.8	3.0
Number of prior felony arrests	1.9	3.0	2.1	2.1	1.3	2.0	1.4	2.8	2.2	2.0	1.0
Number of prior arrests	7.6	10.0	6.5	8.5	7.1	6.6	7.0	8.9	8.5	7.3	9.0

The VisionQuest's Buffalo Soldiers Academy (formerly Quest) provides an individualized wilderness program designed to meet the needs of juveniles ages 13 to 18 with histories of multiple unsuccessful out-of-home placements.

Display 20, Youth Services Agency Felony Recidivism Rates



Time Period	N. Released	Months Since Release			
		6 Months	12 Months	18 Months	24 Months
FY 06	102	33%	51%	.	.

Historical Profile of Youth Released by Fiscal Year

Average	Fiscal Year Released	
	Total	06
YSA LOS in months	1.3	1.3
Placement episode LOS in months	2.6	2.6
No. of prior detention admissions	3.7	3.7
No. of prior incarceration admissions	2.6	2.6
Number of prior felony arrests	2.0	2.0
Number of prior arrests	8.4	8.4

Youth Services Agency provides an adventure based co-ed camping, substance abuse, educational, and vocational program for juveniles between the ages of 10 and 19.

Level IV Recidivism Rates

Display 21, Level IV Small Program Felony Recidivism Rates

Au Clair School, General, Felony Recidivism Rates

Time Period	N. Released	Months Since Release			
		6 Months	12 Months	18 Months	24 Months
FY 97	2	0%	50%	50%	100%
FY 98	8	29%	29%	29%	43%
FY 99	4	50%	50%	75%	100%
FY 00	2	0%	50%	100%	100%
FY 01	4	50%	50%	100%	100%
FY 02	2	50%	50%	50%	50%
FY 03	1	100%	100%	100%	100%
FY 04	2	50%	50%	100%	100%
FY 05	2	0%	100%	100%	100%
FY 06	1	0%	0%	.	.

A description was not available from DYRS for this Department of Education program..

Cornell Abraxas Youth Center, Fire Setter Program Felony Recidivism Rates

Time Period	N. Released	Months Since Release			
		6 Months	12 Months	18 Months	24 Months
FY 04	1	0%	0%	0%	0%

Cornell Abraxas Youth Center's Fire Setter Program provides a structured, long term program with individual and group therapy for males with a history of fire setting behaviors between the ages of 12 and 18.

Benchmark Behavioral Health Felony Recidivism Rates

Time Period	N. Released	Months Since Release			
		6 Months	12 Months	18 Months	24 Months
FY 04	1	0%	0%	0%	0%
FY 05	1	0%	0%	0%	0%

Benchmark Behavioral Health provides a secured, long term, structured, goal oriented program for male adolescent sex offenders with severe behavioral problems between the ages of 13 and 19.

Brown Schools of San Marcos Felony Recidivism Rates

Time Period	N. Released	Months Since Release			
		6 Months	12 Months	18 Months	24 Months
FY 05	1	0%	0%	0%	0%

A description was not available from DYRS for this program.

Chamberlain Academy, General, Felony Recidivism Rates

Time Period	N. Released	Months Since Release			
		6 Months	12 Months	18 Months	24 Months
FY 96	3	33%	33%	100%	100%
FY 97	10	30%	50%	60%	80%
FY 98	17	35%	53%	65%	71%
FY 99	10	50%	50%	60%	60%
FY 00	18	22%	28%	39%	56%
FY 01	5	40%	40%	80%	80%
FY 02	19	21%	37%	47%	58%
FY 03	2	0%	0%	0%	0%
FY 04	5	0%	40%	60%	60%
FY 05	1	0%	100%	100%	100%
FY 06	1	0%	0%	.	.

Chamberlain Academy, General, provides longer term coed programming for habitual juvenile offenders.

Diversified Treatment Alternatives Felony Recidivism Rates

Time Period	N. Released	Months Since Release			
		6 Months	12 Months	18 Months	24 Months
FY 97	2	0%	0%	0%	0%
FY 98	2	0%	0%	0%	50%
FY 99	5	0%	20%	20%	20%
FY 00	4	0%	0%	0%	25%
FY 01	3	0%	33%	33%	33%
FY 02	5	20%	40%	40%	40%
FY 03	2	0%	0%	0%	0%
FY 04	6	17%	17%	17%	17%
FY 05	4	0%	0%	0%	0%
FY 06	7	0%	0%	.	.

Diversified Treatment Alternatives provides specialized sexuality therapy groups, education/therapy groups, and a comprehensive intervention strategy to manage the behavior of male sex offenders 8 to 17 years of age.

George Junior Republic, Special, Felony Recidivism Rates

Time Period	N. Released	Months Since Release			
		6 Months	12 Months	18 Months	24 Months
FY 96	4	75%	75%	100%	100%
FY 99	7	14%	29%	29%	43%
FY 00	3	0%	33%	67%	67%
FY 01	5	60%	60%	80%	80%
FY 02	3	100%	100%	100%	100%
FY 04	2	0%	0%	0%	0%
FY 06	1	0%	0%	.	.

A description was not available from DYRS for this program.

Level IV Recidivism Rates

Grace Cottage, Shelter Services, Felony Recidivism Rates

Time Period	N. Released	Months Since Release			
		6 Months	12 Months	18 Months	24 Months
FY 99	8	0%	0%	0%	0%
FY 00	6	17%	17%	17%	17%
FY 01	18	6%	11%	17%	17%
FY 02	28	0%	0%	4%	7%
FY 03	1	0%	0%	0%	0%
FY 04	4	25%	25%	50%	50%

Grace Cottage provided short-term shelter services for females 13 to 18 years of age. Grace Cottage did not operate from December 24, 2003, through January 18, 2005.

Hennepin County Home School Felony Recidivism Rates

Time Period	N. Released	Months Since Release			
		6 Months	12 Months	18 Months	24 Months
FY 95	2	0%	0%	0%	0%
FY 96	2	0%	0%	50%	50%
FY 97	6	0%	17%	17%	17%
FY 98	1	0%	0%	0%	0%
FY 99	5	0%	40%	40%	60%
FY 00	4	25%	50%	50%	50%
FY 01	7	0%	0%	0%	29%
FY 02	3	0%	0%	0%	0%
FY 03	3	0%	0%	0%	0%
FY 04	2	50%	50%	50%	50%
FY 05	4	25%	25%	25%	25%

Hennepin County Home School provides comprehensive treatment for male sex offenders 14 to 18 years of age in a juvenile corrections facility.

KidsPeace, Diagnostic Program, Felony Recidivism Rates

Time Period	N. Released	Months Since Release			
		6 Months	12 Months	18 Months	24 Months
FY 95	1	0%	0%	0%	0%
FY 96	1	100%	100%	100%	100%
FY 98	1	0%	0%	100%	100%
FY 99	2	0%	0%	0%	50%
FY 01	3	0%	33%	33%	33%
FY 02	2	0%	0%	0%	50%
FY 04	1	100%	100%	100%	100%

KidsPeace's Diagnostic Program provides short-term treatment services combined with a comprehensive diagnostic evaluation for juveniles 6 to 18 years of age.

Manatee Palms Youth Service Felony Recidivism Rates

Time Period	N. Released	Months Since Release			
		6 Months	12 Months	18 Months	24 Months
FY 05	2	0%	0%	0%	0%
FY 06	2	50%	50%	.	.

Manatee Palms Youth Services provides intensive psychiatric hospital/residential program with educational services for adjudicated male sex offenders requiring intensive behavioral health services.

Mountain Manor Treatment Center Felony Recidivism Rates

Time Period	N. Released	Months Since Release			
		6 Months	12 Months	18 Months	24 Months
FY 97	18	50%	61%	67%	67%
FY 98	19	26%	42%	53%	63%
FY 99	3	0%	67%	100%	100%
FY 00	9	11%	22%	33%	56%
FY 01	2	0%	0%	0%	50%
FY 02	14	29%	43%	64%	71%
FY 03	11	45%	45%	55%	55%
FY 04	6	0%	33%	33%	50%
FY 05	7	14%	29%	43%	57%
FY 06	8	50%	63%	.	.

Mountain Manor Treatment Center, Inc., provides drug and alcohol and family therapy programming for juveniles between the ages of 12 and 19.

New Hope Treatment Centers, Dyad Program, Felony Recidivism Rates

Time Period	N. Released	Months Since Release			
		6 Months	12 Months	18 Months	24 Months
FY 05	1	0%	0%	0%	100%

New Hope Treatment Centers' Dyad Program provides a residential therapeutic milieu for dually diagnosed male adolescents, ages 13 to 17.6, with mental retardation and/or developmental disabilities and significant emotional and/or behavioral issues.

Alternative Behavioral Services, New Horizon Program, Felony Recidivism Rates

Time Period	N. Released	Months Since Release			
		6 Months	12 Months	18 Months	24 Months
FY 00	1	0%	0%	0%	0%
FY 02	1	0%	0%	100%	100%
FY 05	2	0%	0%	50%	50%
FY 06	2	50%	50%	.	.

Alternative Behavioral Service's New Horizon program (formerly New Hope's Synergy program) provides long-term daily psychiatric treatment to females 12 to 17.6 years of age.

New Hope Treatment Centers, Starting Pointe Program, Felony Recidivism Rates

Time Period	N. Released	Months Since Release			
		6 Months	12 Months	18 Months	24 Months
FY 02	2	0%	0%	0%	0%
FY 03	3	0%	33%	33%	67%
FY 04	6	17%	17%	17%	17%
FY 05	4	0%	0%	0%	0%
FY 06	3	0%	0%	.	.

New Hope Treatment Center’s Starting Pointe program provides a highly structured milieu specifically designed to monitor and redirect sexually inappropriate behavior, along with a comprehensive array of clinical, educational and recreational services

New Hope Treatment Centers, Triad Program Felony Recidivism Rates

Time Period	N. Released	Months Since Release			
		6 Months	12 Months	18 Months	24 Months
FY 00	6	0%	33%	33%	33%
FY 01	2	0%	50%	50%	50%
FY 02	4	0%	0%	25%	25%
FY 03	4	25%	50%	50%	50%
FY 04	1	0%	0%	0%	0%
FY 06	6	0%	0%	.	.

New Hope’s Triad Program provides an intensive and comprehensive residential treatment for male sex offenders 13 to 21 years of age with IQs ranging from 45 to 75.

Alternative Behavioral Services, Way Point Program Felony Recidivism Rates

Time Period	N. Released	Months Since Release			
		6 Months	12 Months	18 Months	24 Months
FY 00	1	0%	0%	0%	0%
FY 01	4	0%	0%	0%	0%
FY 02	4	0%	25%	25%	25%
FY 03	4	50%	50%	50%	50%
FY 04	2	0%	0%	0%	0%
FY 05	4	0%	0%	0%	0%
FY 06	1	0%	0%	.	.

Alternative Behavioral Services’ Way Point program (formerly New Hope’s Way Point program) provides treatment for sexually aggressive behavior to moderate to high-risk adolescent males 12 to 17.6 years of age.

The Pines, Behavioral Studies Program, Felony Recidivism Rates

Time Period	N. Released	Months Since Release			
		6 Months	12 Months	18 Months	24 Months
FY 97	1	0%	0%	0%	0%
FY 99	2	0%	0%	0%	0%
FY 00	3	0%	33%	33%	33%
FY 01	3	0%	0%	33%	33%
FY 02	8	0%	13%	13%	13%
FY 03	2	0%	50%	50%	100%
FY 04	2	0%	0%	0%	0%
FY 05	2	0%	0%	0%	0%

The Pines' Behavioral Studies Program provides treatment for sex offenders, ages 10 to 18, in a highly structured residential environment.

The Pines, Project Right Track, Felony Recidivism Rates

Time Period	N. Released	Months Since Release			
		6 Months	12 Months	18 Months	24 Months
FY 01	2	0%	0%	50%	50%
FY 02	1	0%	0%	0%	0%
FY 03	1	0%	0%	0%	0%
FY 06	2	100%	100%	.	.

The Pines' Project Right Track (formerly The Cottage Program) provides services to psycho-sexually disturbed males 10 to 17 years of age with full scale IQs between 50 and 60.

The Pines, General, Felony Recidivism Rates

Time Period	N. Released	Months Since Release			
		6 Months	12 Months	18 Months	24 Months
FY 95	2	0%	0%	50%	100%
FY 96	2	50%	50%	50%	50%
FY 97	10	40%	50%	50%	50%
FY 98	9	33%	44%	44%	56%
FY 99	10	0%	10%	30%	30%
FY 00	7	14%	43%	57%	57%
FY 01	3	0%	33%	33%	33%
FY 03	2	0%	0%	0%	0%
FY 04	1	0%	0%	0%	0%
FY 05	3	0%	0%	0%	33%
FY 06	3	33%	33%	.	.

The Pines provides special education in a therapeutic residential setting to juveniles with a DSM-IV psychiatric diagnosis between the ages of 10 and 17 years upon admission.

Level IV Recidivism Rates

The Pines, The Adolescent Male Insight Program Felony Recidivism Rates

Time Period	N. Released	Months Since Release			
		6 Months	12 Months	18 Months	24 Months
FY 00	4	0%	0%	50%	50%
FY 01	3	0%	33%	67%	67%
FY 02	5	20%	40%	40%	60%
FY 03	3	33%	33%	33%	33%
FY 04	1	0%	0%	0%	0%
FY 05	4	0%	0%	50%	50%
FY 06	3	0%	0%	.	.

The Pines' The Adolescent Male Insight Program (formerly The Phoenix Program) provides treatment for aggressive mentally ill males 12 to 18 years of age who are having mental health problems coupled with significant behavior problems.

Renewal Center Felony Recidivism Rates

Time Period	N. Released	Months Since Release			
		6 Months	12 Months	18 Months	24 Months
FY 01	1	0%	0%	0%	100%
FY 04	1	0%	100%	100%	100%

Renewal Center provides residential treatment services for offenders diagnosed with Psychoactive Substance Use Disorder.

Riverside Treatment Services, Inc., Felony Recidivism Rates

Time Period	N. Released	Months Since Release			
		6 Months	12 Months	18 Months	24 Months
FY 02	2	50%	50%	50%	100%
FY 03	2	0%	0%	0%	0%
FY 04	1	100%	100%	100%	100%
FY 05	1	0%	0%	0%	0%
FY 06	1	100%	100%	.	.

Residential Treatment Services, Inc. provides residential mental health services and acute psychiatric hospital services for juveniles that are dually diagnosed and/or are resistant to treatment.

Today Inc., General, Felony Recidivism Rates

Time Period	N. Released	Months Since Release			
		6 Months	12 Months	18 Months	24 Months
FY 97	15	33%	47%	87%	87%
FY 98	9	11%	56%	56%	56%
FY 99	4	25%	25%	50%	50%
FY 00	4	0%	25%	75%	75%
FY 01	10	10%	10%	40%	60%
FY 02	16	19%	38%	38%	50%
FY 03	12	33%	50%	50%	50%
FY 04	3	67%	100%	100%	100%
FY 05	4	25%	25%	25%	50%
FY 06	4	25%	25%	.	.

Today, Inc., provides long-term (60 to 90 days) alcohol and substance abuse treatment for juveniles between the ages of 13 and 19 with histories of addictive (cocaine, heroin, and or poly-substance) abuse.

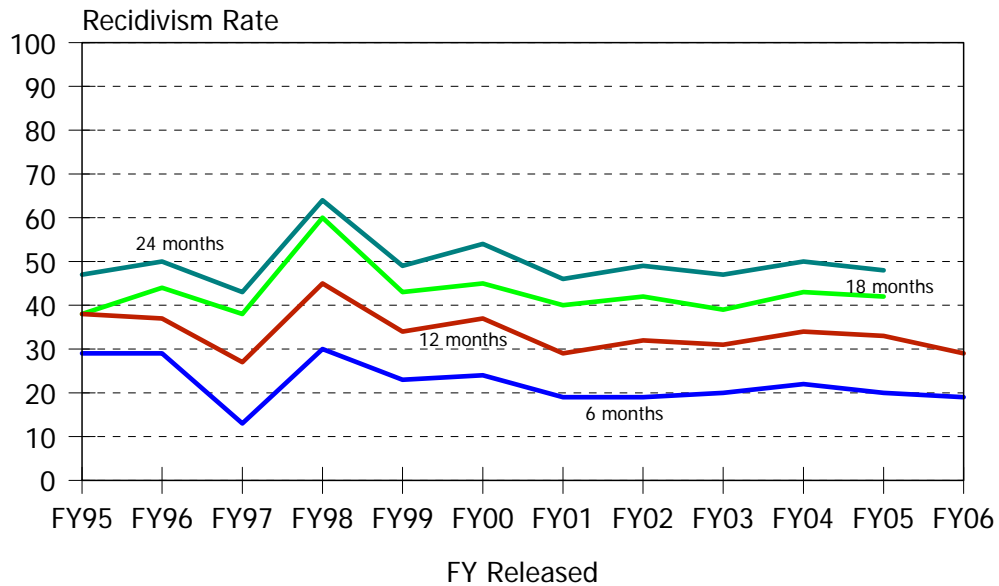
VisionQuest, Lady of The Lakes, Felony Recidivism Rates

Time Period	N. Released	Months Since Release			
		6 Months	12 Months	18 Months	24 Months
FY 03	1	0%	0%	0%	0%
FY 05	1	0%	0%	0%	0%

VisionQuest's Lady of the Lakes provides residential programming for pregnant offenders and teen mothers with one child up to 2 years of age.

Intentionally Blank

Display 22, Level III Residential Felony Recidivism Rates



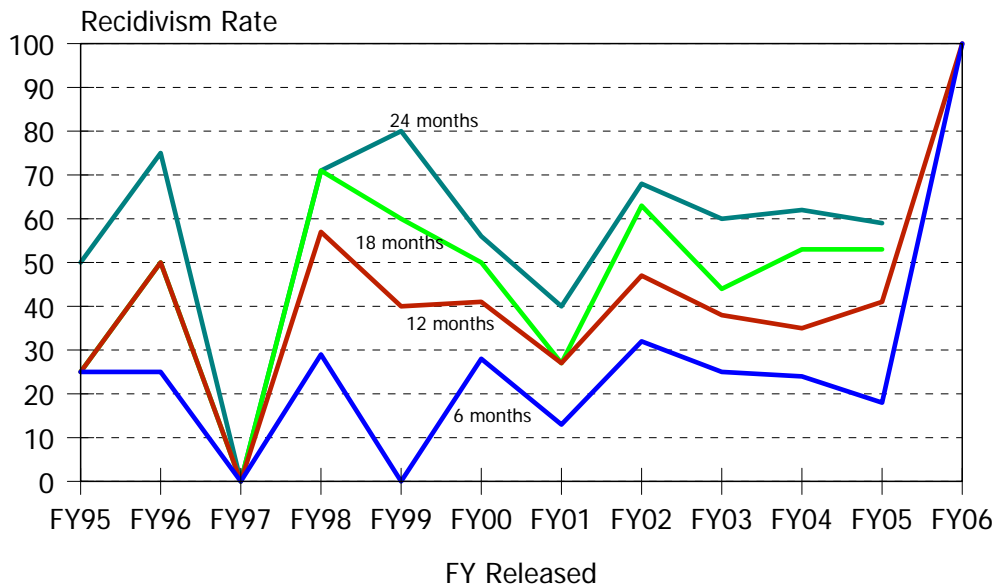
Level III Felony Recidivism Rates

Time Period	N. Released	Months Since Release			
		6 Months	12 Months	18 Months	24 Months
FY 97	107	13%	27%	38%	43%
FY 98	188	30%	45%	60%	64%
FY 99	277	25%	36%	44%	51%
FY 00	458	23%	36%	44%	52%
FY 01	573	19%	30%	40%	46%
FY 02	691	18%	32%	41%	48%
FY 03	960	20%	31%	40%	47%
FY 04	1,311	22%	34%	43%	50%
FY 05	1,447	20%	33%	42%	48%
FY 06	1,394	19%	29%	.	.

Historical Profile of Youth Released by Fiscal Year

Average	Total	Fiscal Year Released										
		97	98	99	00	01	02	03	04	05	06	
Level III LOS in months	2.9	7.6	6.6	4.4	4.2	3.0	3.4	2.9	2.2	2.4	2.5	
Placement episode LOS in months	4.2	10.0	9.7	6.5	6.0	4.5	5.5	4.4	3.1	3.2	3.5	
No. of prior detention admissions	1.9	2.2	2.3	2.0	2.0	1.7	1.8	2.0	2.2	1.9	1.6	
No. of prior incarceration admissions	0.9	0.8	1.0	1.1	1.1	0.7	0.9	1.0	0.9	0.9	0.8	
Number of prior felony arrests	1.2	1.6	2.3	1.9	1.6	1.3	1.2	1.2	1.1	1.1	1.0	
Number of prior arrests	5.5	6.4	6.6	6.1	5.5	5.0	5.3	5.6	5.5	5.4	5.4	

Display 23, Camelot, General, Felony Recidivism Rates



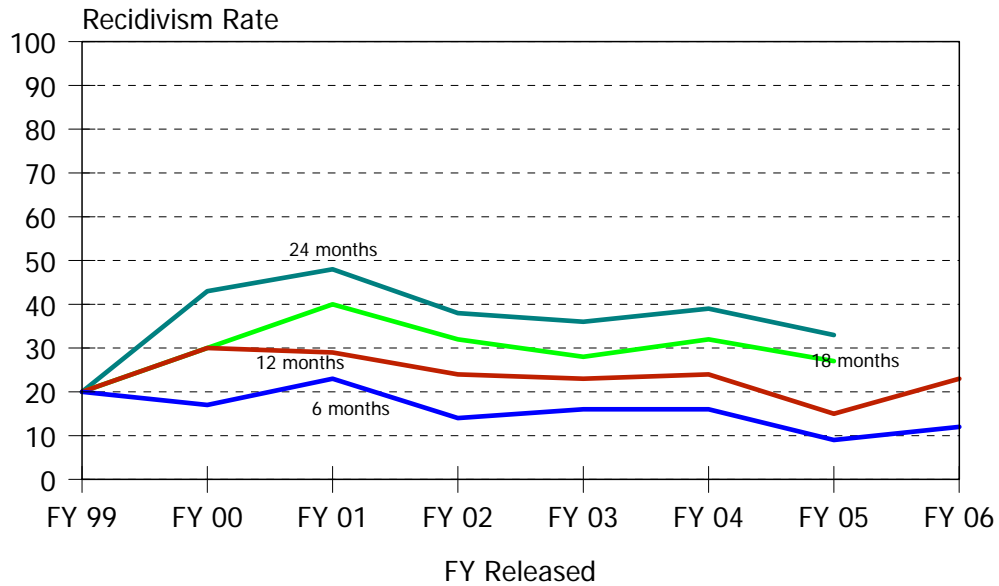
Time Period	N. Released	Months Since Release			
		6 Months	12 Months	18 Months	24 Months
FY 97	3	0%	0%	0%	0%
FY 98	7	29%	57%	71%	71%
FY 99	5	0%	40%	60%	80%
FY 00	18	28%	41%	50%	56%
FY 01	15	13%	27%	27%	40%
FY 02	18	33%	50%	61%	67%
FY 03	17	24%	35%	47%	63%
FY 04	34	24%	35%	53%	62%
FY 05	49	18%	41%	53%	59%
FY 06	3	100%	100%	.	.

Historical Profile of Youth Released by Fiscal Year

Average	Total	Fiscal Year Released									
		97	98	99	00	01	02	03	04	05	06
Camelot General LOS in months	1.1	1.9	2.5	3.6	1.9	1.7	1.2	0.5	0.5	0.7	1.1
Placement episode LOS in months	6.1	3.9	11.9	15.1	9.8	14.4	10.7	3.4	3.8	2.0	9.1
No. of prior detention admissions	2.7	0.7	3.9	1.6	3.3	2.5	2.5	2.1	2.9	2.8	3.0
No. of prior incarceration admissions	1.5	0.7	2.0	1.2	2.1	2.3	1.6	1.2	1.0	1.7	1.3
Number of prior felony arrests	1.5	2.0	3.3	1.2	1.7	1.4	2.0	0.9	1.0	1.3	2.0
Number of prior arrests	6.2	5.3	8.4	4.0	6.5	4.5	5.7	5.6	6.1	6.8	5.0

Camelot, General, provides residential group care to pre-adjudicated males between the ages of 12 and 18.

Display 24, Cornell Abraxas, Home Based Services, Felony Recidivism Rates



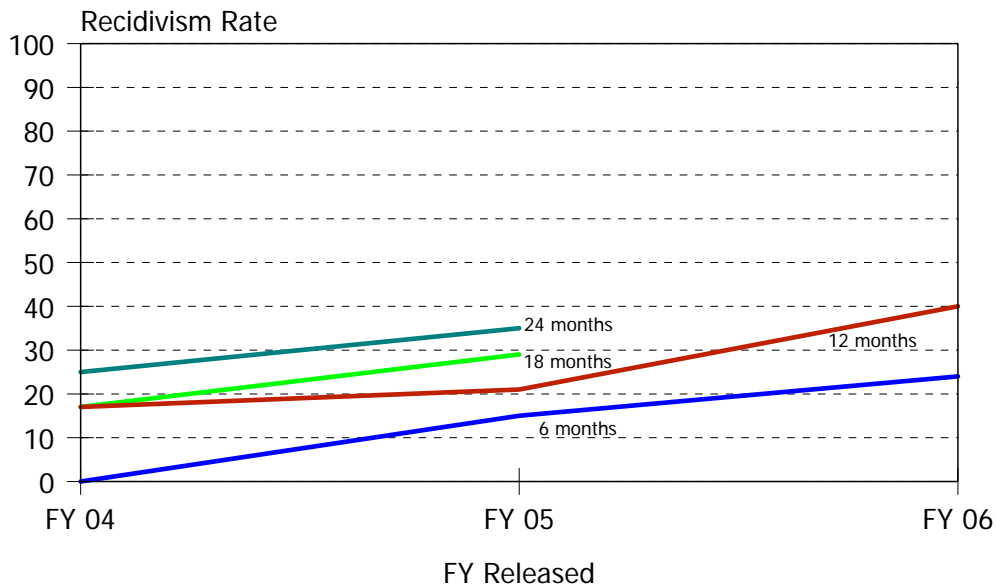
Time Period	N. Released	Months Since Release			
		6 Months	12 Months	18 Months	24 Months
FY 99	5	20%	20%	20%	20%
FY 00	30	17%	30%	30%	43%
FY 01	65	23%	29%	40%	48%
FY 02	76	14%	24%	32%	38%
FY 03	98	16%	23%	28%	36%
FY 04	111	16%	24%	32%	39%
FY 05	98	9%	15%	27%	33%
FY 06	117	12%	23%	.	.

Historical Profile of Youth Released by Fiscal Year

Average	Total	Fiscal Year Released								
		99	00	01	02	03	04	05	06	
Abraxas HBS LOS in months	2.6	1.2	2.9	2.5	2.4	2.5	2.8	2.8	2.7	
Placement episode LOS in months	3.9	5.2	3.5	3.2	5.1	4.0	3.9	4.4	3.2	
No. of prior detention admissions	0.9	1.0	0.9	1.0	1.4	1.0	1.0	0.9	0.7	
No. of prior incarceration admissions	0.5	1.8	0.5	0.5	0.8	0.5	0.4	0.4	0.3	
Number of prior felony arrests	1.1	0.6	1.1	1.3	1.3	1.0	0.9	1.0	1.0	
Number of prior arrests	5.1	5.4	4.9	5.4	5.6	4.7	5.1	5.0	4.9	

Cornell Abraxas Level III Home Based Services provides one-on-one case management, individual and family intervention and counseling, assistance with community resources for youth and family and assistance with job placement.

Display 25, Cornell Abraxas, Electronic Monitoring, Felony Recidivism Rates



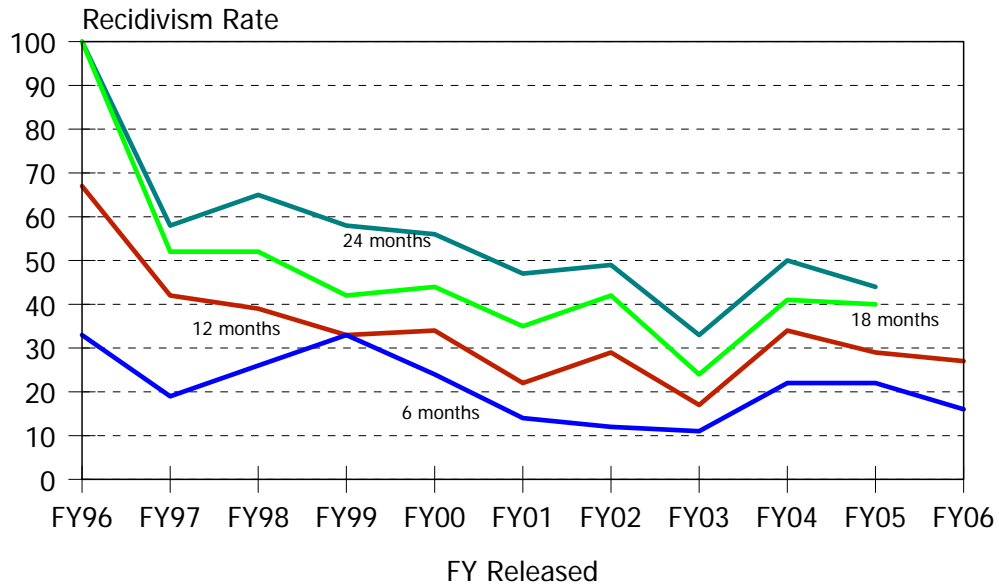
Time Period	N. Released	Months Since Release			
		6 Months	12 Months	18 Months	24 Months
FY 04	12	0%	17%	17%	25%
FY 05	34	15%	21%	29%	35%
FY 06	42	24%	40%	.	.

Historical Profile of Youth Released by Fiscal Year

Average	Total	Fiscal Year Released		
		04	05	06
Abraxas EM LOS in months	2.2	2.0	2.6	2.6
Placement episode LOS in months	4.5	2.7	4.4	5.2
No. of prior detention admissions	1.2	0.7	0.8	1.5
No. of prior incarceration admissions	0.4	0.3	0.3	0.5
Number of prior felony arrests	1.0	0.7	0.8	1.2
Number of prior arrests	4.7	3.9	4.3	5.2

Cornell Abraxas Electronic Monitoring provides Level IIIA and Level III juveniles electronic monitoring on a limited basis, as well as, electronic monitoring of non-secure detainees.

Display 26, Cornell Abraxas, Intensive Home Based Services, Felony Recidivism Rates



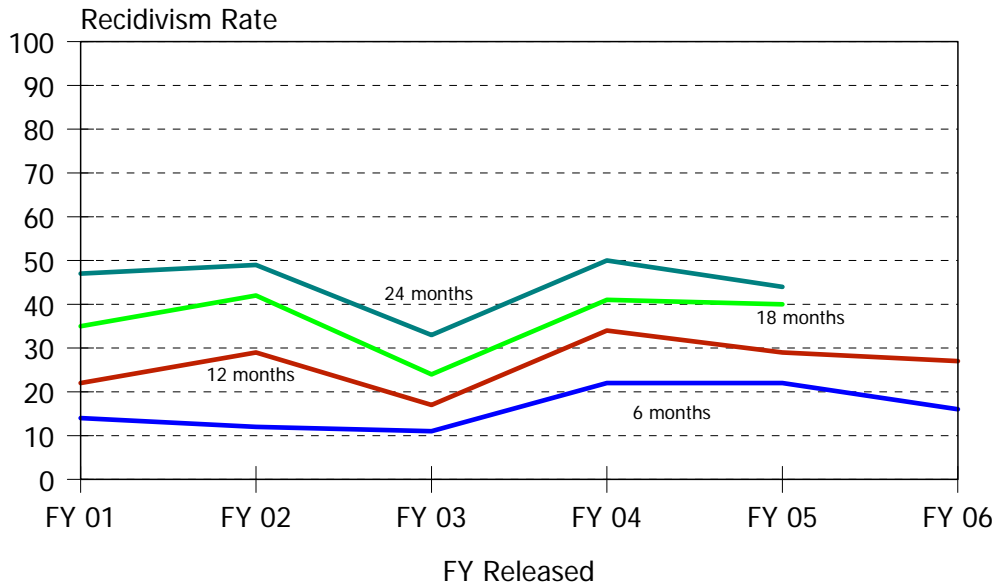
Time Period	N. Released	Months Since Release			
		6 Months	12 Months	18 Months	24 Months
FY 97	32	19%	42%	52%	58%
FY 98	31	26%	39%	52%	65%
FY 99	12	33%	33%	42%	58%
FY 00	50	24%	34%	44%	56%
FY 01	51	14%	22%	35%	47%
FY 02	59	12%	29%	42%	49%
FY 03	88	11%	18%	25%	34%
FY 04	104	22%	34%	41%	50%
FY 05	100	22%	29%	40%	44%
FY 06	103	16%	27%	.	.

Historical Profile of Youth Released by Fiscal Year

Average	Total	Fiscal Year Released										
		97	98	99	00	01	02	03	04	05	06	
Abraxas IHBS LOS in months	3.7	6.2	6.1	8.0	4.5	3.9	4.3	3.2	2.7	3.0	2.8	
Placement episode LOS in months	5.4	8.7	8.4	13.6	5.8	5.5	7.2	4.8	4.0	4.5	4.5	
No. of prior detention admissions	1.4	2.3	1.1	1.2	1.4	1.3	1.4	1.4	1.3	1.4	1.4	
No. of prior incarceration admissions	0.9	1.2	1.0	1.4	1.1	0.9	1.1	1.0	0.7	0.9	1.0	
Number of prior felony arrests	1.4	2.1	2.0	2.8	1.7	1.6	1.7	1.4	1.1	1.3	1.2	
Number of prior arrests	6.3	7.8	7.0	6.0	6.4	6.9	7.0	6.1	6.0	6.1	6.3	

Cornell Abraxas Level IIIA Intensive Home Based services provides one-on-one case management, intensive home-based family intervention and counseling, assistance with community resources, and assistance with job placement/retention and electronic monitoring.

Display 27, Lead Inc. Felony Recidivism Rates



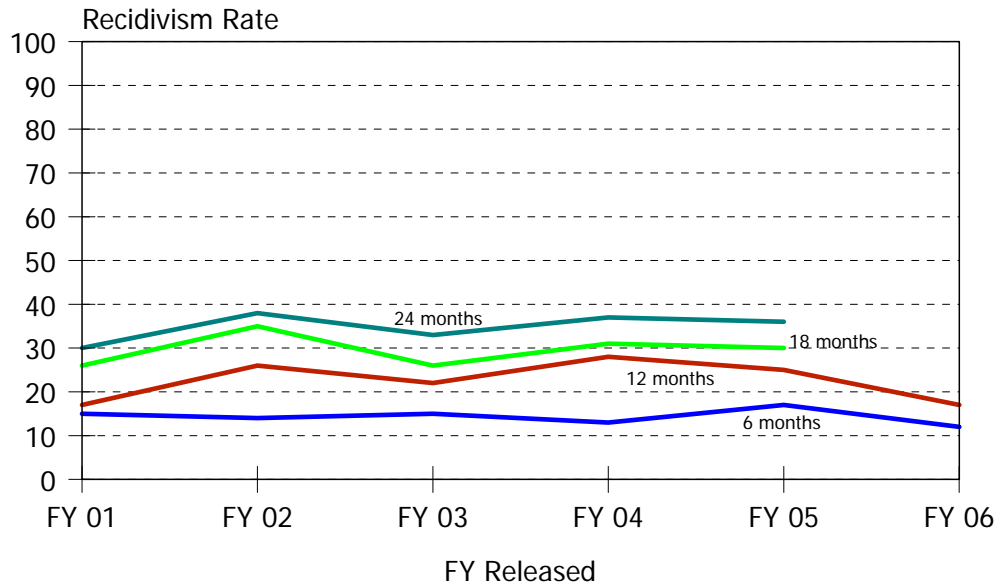
Time Period	N. Released	Months Since Release			
		6 Months	12 Months	18 Months	24 Months
FY 01	18	28%	44%	50%	50%
FY 02	72	26%	36%	50%	57%
FY 03	153	21%	36%	47%	54%
FY 04	174	24%	35%	44%	54%
FY 05	223	24%	39%	49%	56%
FY 06	176	20%	33%	.	.

Historical Profile of Youth Released by Fiscal Year

Average	Total	Fiscal Year Released					
		01	02	03	04	05	06
Lead Inc. LOS in months	1.1	2.4	1.1	1.3	0.8	1.0	1.1
Placement episode LOS in months	2.4	4.1	1.8	3.0	2.1	2.2	2.6
Number of prior detention admissions	2.2	1.1	1.7	2.2	2.7	2.1	2.1
Number of prior incarceration admissions	1.1	0.4	1.0	1.4	1.1	1.0	1.0
Number of prior felony arrests	1.2	1.4	1.0	1.4	1.1	1.2	1.1
Number of prior arrests	5.5	4.7	4.8	5.5	5.7	5.4	5.7

Lead Inc. home based services includes visiting schools to insure attendance, visiting work sites and making home curfew checks by telephone and in person, providing an at home restriction program for technical violations of probation and Aftercare, and transportation to local facilities and services.

Display 28, People's Place II, Felony Recidivism Rates



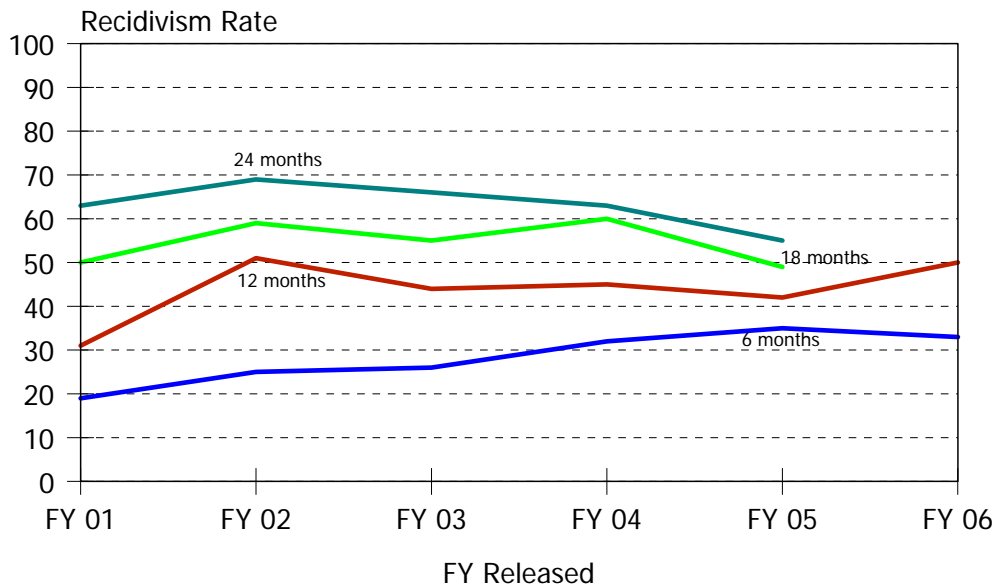
Time Period	N. Released	Months Since Release			
		6 Months	12 Months	18 Months	24 Months
FY 01	102	16%	18%	26%	30%
FY 02	110	14%	26%	35%	38%
FY 03	148	15%	22%	26%	33%
FY 04	181	13%	28%	31%	37%
FY 05	188	17%	25%	30%	36%
FY 06	176	12%	17%	.	.

Historical Profile of Youth Released by Fiscal Year

Average	Total	Fiscal Year Released					
		01	02	03	04	05	06
People's Place II LOS in months	0.5	0.5	0.5	0.5	0.4	0.5	0.5
Placement episode LOS in months	1.4	1.2	1.5	1.3	1.1	1.5	2.1
Number of prior detention admissions	1.5	1.6	1.4	1.6	1.5	1.5	1.5
Number of prior incarceration admissions	0.3	0.2	0.4	0.5	0.2	0.3	0.3
Number of prior felony arrests	0.6	0.6	0.7	0.8	0.6	0.7	0.6
Number of prior arrests	3.9	3.5	3.8	4.5	3.9	4.1	3.9

People's Place II operates a supervised group home as an alternative to secure detention.

Display 29, Project Stay Free, Day Treatment Program, Felony Recidivism Rates



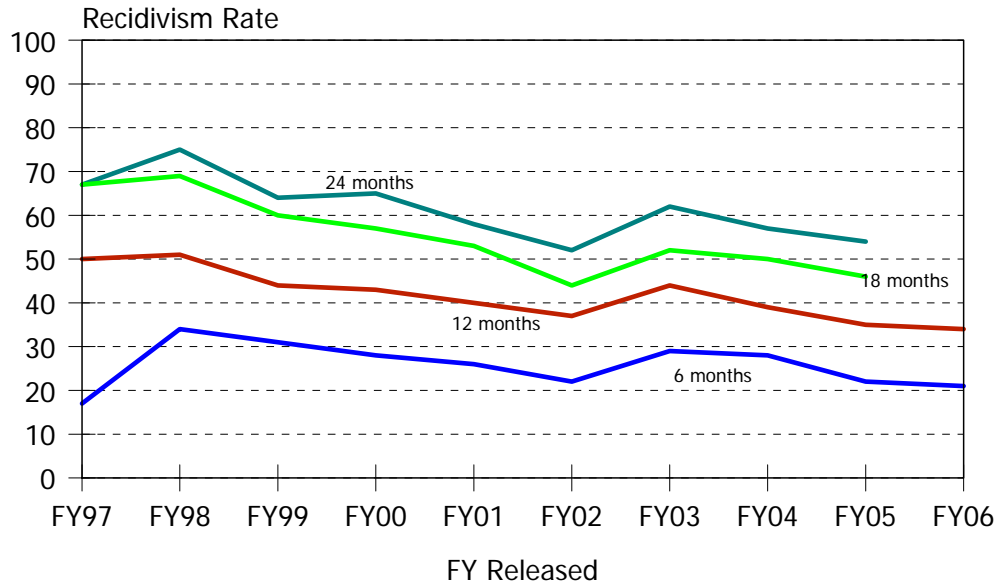
Time Period	N. Released	Months Since Release			
		6 Months	12 Months	18 Months	24 Months
FY 01	32	19%	31%	50%	63%
FY 02	62	23%	49%	56%	66%
FY 03	67	25%	45%	55%	68%
FY 04	62	32%	45%	60%	63%
FY 05	68	35%	42%	49%	55%
FY 06	70	33%	50%	.	.

Historical Profile of Youth Released by Fiscal Year

Average	Total	Fiscal Year Released					
		01	02	03	04	05	06
Project Stay Free Day Treatment LOS	2.7	2.0	3.7	3.0	2.8	1.9	2.3
Placement episode LOS in months	4.6	3.6	6.6	5.0	4.5	3.8	4.2
Number of prior detention admissions	3.4	2.2	3.0	3.9	3.9	4.0	2.9
Number of prior incarceration admissions	1.9	1.5	1.8	2.1	2.0	2.1	1.7
Number of prior felony arrests	1.6	1.3	1.6	1.9	1.7	1.4	1.4
Number of prior arrests	7.1	5.3	6.5	8.1	7.2	7.8	6.8

Project Stay Free provides intensive day treatment services to adjudicated New Castle County residents with an expected length of stay of four months.

Display 30, Project Stay Free,
Intensive Home Based Services, Felony Recidivism Rates



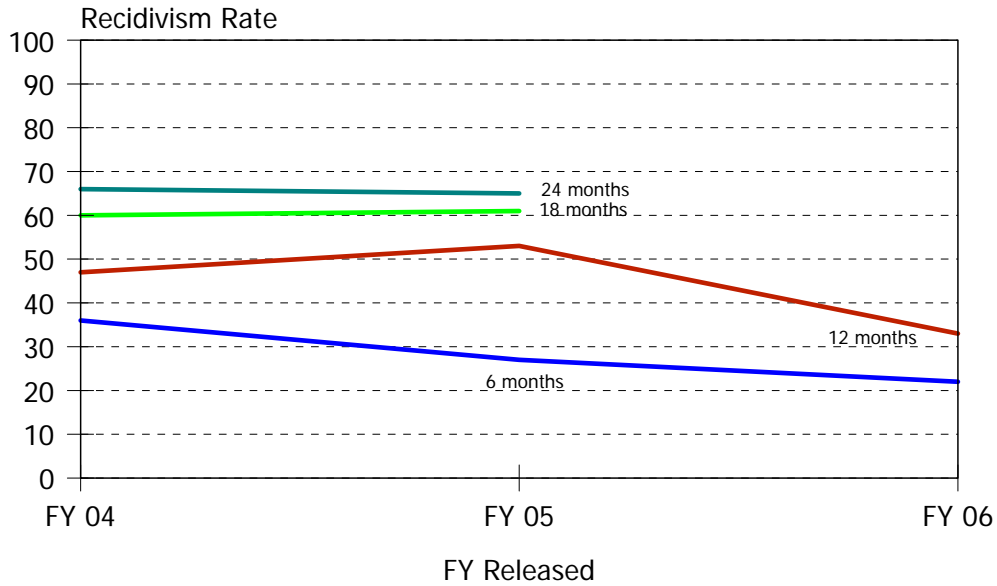
Time Period	N. Released	Months Since Release			
		6 Months	12 Months	18 Months	24 Months
FY 97	6	17%	50%	67%	67%
FY 98	68	34%	51%	69%	75%
FY 99	45	31%	44%	60%	64%
FY 00	79	28%	43%	57%	65%
FY 01	112	27%	40%	53%	58%
FY 02	106	23%	39%	45%	53%
FY 03	178	29%	43%	52%	61%
FY 04	220	28%	39%	50%	57%
FY 05	266	22%	35%	46%	54%
FY 06	275	21%	34%	.	.

Historical Profile of Youth Released by Fiscal Year

Average	Total	Fiscal Year Released										
		97	98	99	00	01	02	03	04	05	06	
Project Stay Free ICCP LOS	2.9	6.9	5.8	6.1	4.4	3.6	3.7	2.8	1.9	2.2	2.3	
Placement episode LOS in months	4.1	10.1	9.9	10.8	6.4	4.9	6.0	3.8	2.6	2.9	3.0	
No. of prior detention admissions	2.2	1.5	2.2	2.1	2.2	2.1	2.1	2.6	2.9	2.0	1.6	
No. of prior incarceration admissions	0.8	1.8	1.1	1.3	1.0	0.9	0.6	1.1	1.2	0.5	0.5	
Number of prior felony arrests	1.4	1.5	2.9	2.9	2.1	1.7	1.5	1.3	1.4	1.2	1.2	
Number of prior arrests	5.8	4.3	6.4	7.0	5.7	5.5	5.3	6.4	6.3	5.4	5.6	

Project Stay Free provides Intensive Home Based Services (ICCP) with an expected length of stay of three months.

Display 31, Providence Service Corporation,
Home Based Family Services, Felony Recidivism Rates



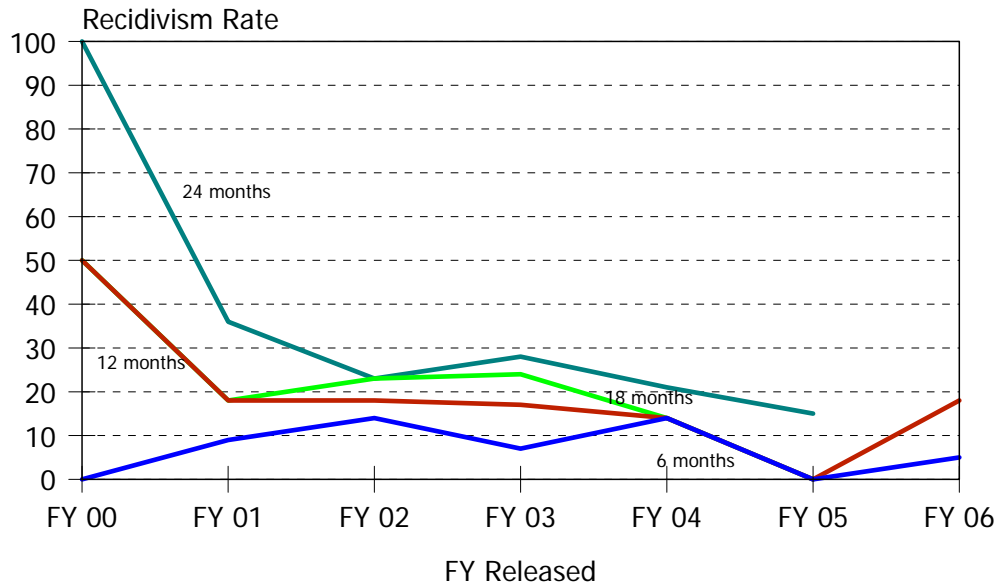
Time Period	N. Released	Months Since Release			
		6 Months	12 Months	18 Months	24 Months
FY 04	73	36%	47%	60%	66%
FY 05	66	27%	53%	61%	65%
FY 06	55	22%	33%	.	.

Historical Profile of Youth Released by Fiscal Year

Average	Total	Fiscal Year Released		
		04	05	06
Providence Home Based LOS in months	2.5	2.3	2.8	2.5
Placement episode LOS in months	4.1	3.8	4.8	3.6
No. of prior detention admissions	2.5	2.8	2.6	2.1
No. of prior incarceration admissions	1.3	1.2	1.4	1.2
Number of prior felony arrests	1.4	1.5	1.6	1.0
Number of prior arrests	6.1	6.1	6.4	5.9

Providence Service Corporation provides needs-oriented, individualized service plan to pinpoint the most critical needs of each youth and family following the MST approach to treatment.

Display 32, Psychotherapeutic
Children's Services, Family Support Services, Felony Recidivism Rates



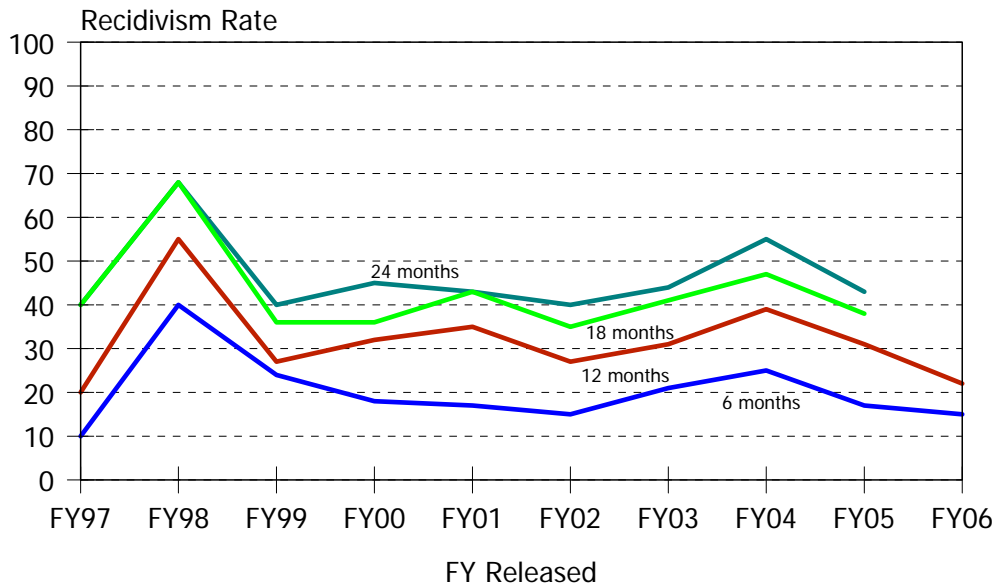
Time Period	N. Released	Months Since Release			
		6 Months	12 Months	18 Months	24 Months
FY 00	2	0%	50%	50%	100%
FY 01	11	9%	18%	18%	36%
FY 02	22	14%	18%	23%	23%
FY 03	29	7%	17%	24%	28%
FY 04	14	14%	14%	14%	21%
FY 05	13	0%	0%	0%	15%
FY 06	22	5%	18%	.	.

Historical Profile of Youth Released by Fiscal Year

Average	Total	Fiscal Year Released							
		00	01	02	03	04	05	06	
PCS Family Support Services LOS	15.1	13.2	8.8	17.1	14.2	14.4	15.5	17.3	
Placement episode LOS in months	39.7	44.6	29.5	43.6	38.3	40.7	43.1	40.6	
Number of prior detention admissions	1.5	1.0	1.7	1.6	1.5	2.1	1.4	1.4	
Number of prior incarceration admissions	2.2	2.5	2.5	2.2	2.2	2.7	2.6	2.0	
Number of prior felony arrests	1.5	1.0	1.5	1.5	1.5	1.3	1.7	1.7	
Number of prior arrests	3.3	2.5	3.7	3.1	3.1	3.6	3.8	3.6	

Psychotherapeutic Children's Services, Family Support Services implements and coordinates the family therapy component of a sexual offender's treatment plan while they are in placement and the comprehensive relapse prevention plan upon return to the family.

Display 33, Psychotherapeutic Children's Services,
Multisystemic Therapy Program, Felony Recidivism Rates



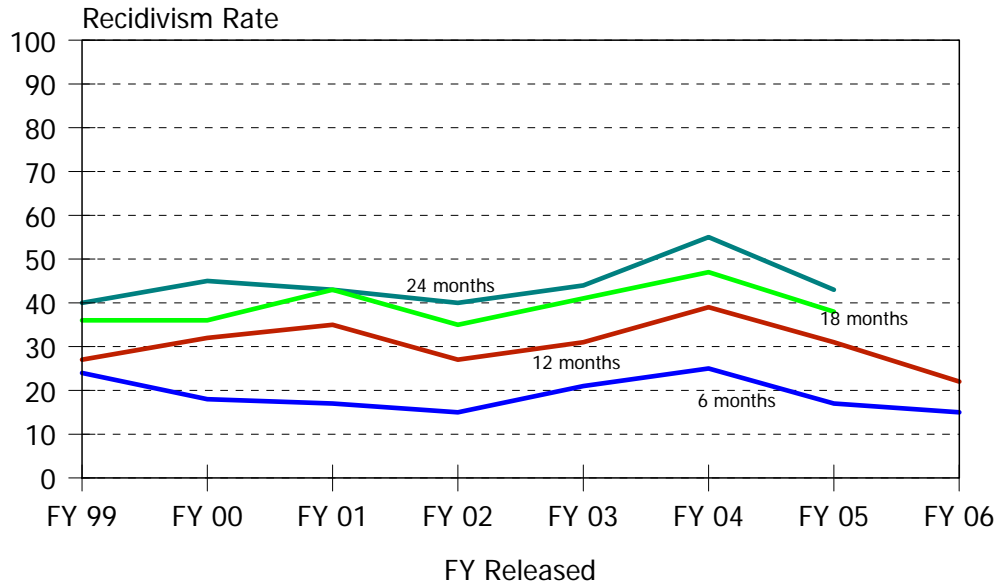
Time Period	N. Released	Months Since Release			
		6 Months	12 Months	18 Months	24 Months
FY 97	10	10%	20%	40%	40%
FY 98	47	40%	55%	68%	68%
FY 99	67	24%	27%	36%	40%
FY 00	92	21%	34%	39%	47%
FY 01	84	17%	35%	43%	43%
FY 02	100	15%	27%	35%	40%
FY 03	90	21%	31%	41%	46%
FY 04	92	25%	39%	47%	55%
FY 05	110	17%	31%	38%	43%
FY 06	123	15%	22%	.	.

Historical Profile of Youth Released by Fiscal Year

Average	Total	Fiscal Year Released									
		97	98	99	00	01	02	03	04	05	06
PCS MST LOS in months	3.5	6.9	5.8	6.1	4.4	3.6	3.7	2.8	3.7	3.3	2.6
Placement episode LOS in months	5.0	10.1	9.9	10.8	6.4	4.9	6.0	3.8	4.7	4.6	4.6
No. of prior detention admissions	2.1	1.5	2.2	2.1	2.2	2.1	2.1	2.6	1.7	2.2	1.8
No. of prior incarceration admissions	0.8	1.8	1.1	1.3	1.0	0.9	0.6	1.1	0.6	0.9	1.1
Number of prior felony arrests	1.2	1.5	2.9	2.9	2.1	1.7	1.5	1.3	1.1	1.2	1.0
Number of prior arrests	5.7	4.3	6.4	7.0	5.7	5.5	5.3	6.4	5.8	5.8	5.7

Psychotherapeutic Children's Services, Multisystemic Therapy Program is an intensive and comprehensive community based therapeutic intervention model that provides cognitive therapy for client and families with a low one-to-four to one-to-six therapists to client ratio.

Display 34, VisionQuest,
Family-Centered Intensive Case Management Program, Felony Recidivism Rates



Time Period	N. Released	Months Since Release			
		6 Months	12 Months	18 Months	24 Months
FY 99	123	25%	38%	44%	53%
FY 00	174	22%	34%	42%	49%
FY 01	110	20%	34%	42%	45%
FY 02	103	16%	26%	35%	46%
FY 03	151	20%	27%	39%	44%
FY 04	344	19%	33%	43%	50%
FY 05	366	20%	34%	43%	49%
FY 06	357	19%	31%		

Historical Profile of Youth Released by Fiscal Year

Average	Total	Fiscal Year Released								
		99	00	01	02	03	04	05	06	
VisionQuest FCICM LOS in months	2.3	2.4	2.5	2.5	2.5	2.6	2.0	2.3	2.2	
Placement episode LOS in months	3.2	3.3	4.4	3.8	3.0	3.6	2.6	3.3	2.8	
No. of prior detention admissions	1.9	1.9	2.3	1.4	1.3	1.7	2.2	2.1	1.7	
No. of prior incarceration admissions	1.0	1.3	1.4	0.6	0.4	0.7	0.9	1.1	1.0	
Number of prior felony arrests	1.1	1.8	1.5	1.1	0.8	0.9	1.0	1.1	1.0	
Number of prior arrests	5.4	5.7	5.2	4.7	5.0	4.9	5.6	5.7	5.7	

VisionQuest’s Family-Centered Intensive Case Management Program is a community based program designed to meet the needs of youth, and their families, who need in-home intervention and DYRS probation case management.

Display 35, Level III Small Program Felony Recidivism Rates

Child, Inc., General, Felony Recidivism Rates

Time Period	N. Released	Months Since Release			
		6 Months	12 Months	18 Months	24 Months
FY 97	32	13%	23%	32%	42%
FY 98	25	16%	28%	48%	48%
FY 99	25	20%	36%	40%	44%
FY 00	28	25%	32%	50%	54%
FY 01	12	8%	17%	33%	42%
FY 02	14	14%	36%	50%	64%
FY 03	13	15%	31%	31%	46%
FY 04	3	0%	0%	0%	0%
FY 05	2	50%	50%	50%	50%

Child, Inc., General, provides foster care for adjudicated juveniles between the ages of 8 and 18.

Diversified Treatment Alternatives, Foster Care, Felony Recidivism Rates

Time Period	N. Released	Months Since Release			
		6 Months	12 Months	18 Months	24 Months
FY 98	2	0%	0%	100%	100%
FY 02	2	0%	0%	0%	0%
FY 03	2	0%	0%	0%	0%
FY 05	2	0%	0%	0%	50%
FY 06	4	0%	0%	.	.

Diversified Treatment Alternatives provides temporary and long-term foster care for sexual offenders that successfully completed Diversified Treatment Alternatives' Level IV program.

YMCA, Weekly, Felony Recidivism Rates

Time Period	N. Released	Months Since Release			
		6 Months	12 Months	18 Months	24 Months
FY 96	2	50%	50%	50%	50%
FY 97	1	0%	0%	100%	100%
FY 99	1	100%	100%	100%	100%
FY 00	5	0%	40%	40%	40%
FY 01	1	0%	0%	0%	100%
FY 02	2	50%	50%	50%	100%
FY 04	1	100%	100%	100%	100%

YMCA's Weekly program provides emergency housing – with no additional services – for adjudicated males 18 years of age who are in need of immediate and temporary housing.

Data Sources

Criminal Justice Information System Data

Arrest data was downloaded from the Criminal Justice Information System (CJIS) on August 12, 2007, for use in this study. Before the arrest data could be analyzed, extensive cleanup and charge selection was required according to the following protocol:

- a. Complete criminal history information was downloaded from CJIS at the charge level for all youth released from a residential Level IV or V program from July 1, 1994 through June 30, 2006.
- b. Charges from arresting jurisdictions other than “DE” were excluded, thus deleting charges under municipal ordinances.
- c. Charges for Title 21 offenses not related to driving under the influence or the theft of a motor vehicle were excluded.
- d. Offense Title, Section, Class, and Type citations were verified against the SAC’s law file. Where CJIS statute citations did not match the law file, the citations were corrected. The SAC’s law file matches current state statutes. For example, an offender’s arrest for burglary in the third degree, a class F felony, appeared in CJIS as an unclassified misdemeanor.
- e. Attempted offenses charged under 11 Del.C. § 531 were corrected to the actual statute violated where an appropriate match could be made against the attempted offense’s literal description. For example, 11 Del.C. § 531, attempted theft over \$1,000, was recoded as an arrest for 11 Del.C. § 841, theft over \$1,000 – attempted.
- f. Attempted offenses charged under 11 Del.C. § 531 where the literal description did not reference an actual offense (Attempted attempt to commit a crime) and the NCIC code was not missing, were recoded to the actual statutes using the NCIC code.
- g. Attempted offenses charged under 11 Del.C. § 531 where the literal description did not reference an actual offense (Attempted attempt to commit a crime) and the NCIC code was missing, were recoded to actual statutes through the descriptive information contained in CJIS under the offense’s complaint number.
- h. Attempted offenses charged under 11 Del.C. § 531 where the literal description did not reference an actual offense, the NCIC code was missing and the complaint information did not yield any clues as to the crime committed were resolved within the context of the offender’s arrest patterns and criminal career.
- i. Criminal charges for individual offenders were aggregated at the arrest level, thus providing a collection of all relevant charges by offender and date of arrest, i.e., charges were aggregated into arrest events by date of arrest and SBI number.

Incorrect statute citations on 19,918 charges, or 9.6 percent, were changed to match the SAC law file.

Juvenile Placement Data

Release cohort data was extracted from the data maintained on the DSCYF's Family and Child Tracking System (FACTS), and the SAC's DYRS facility database, for youth released from placements from July 1, 1994, through June 30, 2006. Release cohort data was conflated according to the following protocol:

- a. Division of Family Services (DFS), DCMH, and DYRS Level III, IV and V program data was extracted from FACTS on September 11, 2006. The DYRS placement information (program name, admission and release dates) was verified against DSCYF fiscal records. If the fiscal records were not found, the placement information was verified through the program's records, when these were available.
- b. The program data were integrated with the SAC's juvenile facility database.
 - Excluded from the dataset were alternative placement records which coincided with a facility placement record, i.e., if a youth was serving time in Ferris but a bed was being saved in an alternative program, only the Ferris record was included in the dataset.
 - For cases where an alternative programs placement spanned over an admission into a secure facility, i.e., a youth was sent to the Stevenson House for a 72 hour administrative hold, the alternative program's placement information was adjusted to reflect the exit from the program and the entry into secure care.
 - For cases where an alternative program placement spanned over another alternative program placement, i.e. a youth's bed was being saved in a program while the youth was being held in a Level IV Snowden Cottage slot, admission and release dates were adjusted to correspond to fiscal records.
 - For cases where fiscal records showed that a youth was transferred, admitted, and/or released, but there was no corresponding record of the transfer in FACTS, a new record was created to reflect this movement.

A total of 3,483 placement records were found to be in error, an alternative residential program data error rate of 11.8 percent, due to discrepancies in admission and/or release dates when compared to fiscal records, missing records, duplication, and offender identification problems.

Secure Placement Episodes

Secure placement episodes comprise a continuous period of time when a youth is not in the community and may include multiple releases from secure residential placements. For example, the typical Ferris School for Boys placement episode includes three uninterrupted placements: (1) admission to the Detention Center, (2) admission to Ferris School, and (3) transition back to the community through Mowlds Cottage.

The release cohort data in this study includes releases (n=46,660) from non-secure Level III placements and secure or institutional out-of-home placements for the 7,416 juveniles released during the study period. Secure placements include DYRS detention and Level IV and Level V programs which house adjudicated youth in secure settings (n=29,704.) Secure placements also include DFS and DCMH programs that provide residential services which are classified by DSCYF as crisis bed, mental health; inpatient hospital; inpatient hospital, mental health; residential group care, treatment center; residential Interagency Collaborative Team; residential treatment, mental health; and residential treatment, substance abuse (n=2,986.)

From time-to-time a secure DYRS placement will be preceded or followed by a DFS or DCMH residential placement. Residential DFS and DCMH placements are included in this study for juveniles that had at least one active DYRS residential placement. Youth without DYRS residential placements are not a part of this study. DFS and DCMH placements are included in this study so that the time a juvenile spends in the community after being released from a secure residential placement episode can be calculated accurately.

Juveniles in Level III programs are in the community while they attend school, recreational activities, attend counseling sessions or receive vocational training. Some Level III programs provide home based services while others are classified by FACTS as being residential. FACTS' residential classification applies to Level III programs that provide group care, independent living, non-secure detention, and transitional services. These programs are not secure residential programs.

During the study period, 7,416 juveniles were released from 46,660 placements. These 46,660 placements can be grouped into 20,944 placement episodes.

Level III, IV and V Recidivism Study Dataset

The analysis file was produced by joining the latest available offender identification (SBI, and demographic information such as name, date of birth, race), arrest history (CJIS) and placement data (DYRS facility and contracted III, IV and V programs.) Since the analysis file used for calculating all the statistics in this report was conflated from the latest available information, the statistics presented in this document supersede statistics presented in previous reports. In total, 260,323 arrest charges were identified, verified and matched against 46,660 out-of-home placements to produce the analysis file.

No felony recidivism statistics are presented in this document for pre-trial juvenile detainees. The adjudicated Level V felony recidivism rates presented in this document for juveniles held in detention centers apply to juveniles who were adjudicated and subsequently admitted to a detention center or were held in a detention center for more than 10 days after their adjudication.

This analysis considers juveniles that spent at least one at least one day in the Ferris School before their transfer to Mowlds Cottage or release to the community as Ferris School releases.

Considered as Mowlds Cottage releases were juveniles who spent their entire incarceration at Mowlds Cottage before being released to the community.

DYRS/DOC Re-admission Recidivism Dataset

DOC release cohort data was extracted from CJIS, for juveniles that had been released from a DYRS Level V placement from July 1, 1994, through June 30, 2006. DOC release cohort data was conflated according to the following protocol:

- a. DOC detention, Level IV and V admission and release data was extracted from CJIS on January 23, 2007.
- c. DOC data were integrated with the SAC's juvenile placement data.
 - Excluded from the DYRS/DOC re-admission recidivism dataset were DOC records where an offender was in the community under supervised custody, direct supervision, pre-trial services, home confinement, assigned to a Probation and Parole institution or to *restitution only*.
 - When an offender had a Central Violation of Probation, Plummer House or Sussex Halfway House Work Release case, and the location file showed that during part of the case the offender had been in a *hard* institution, i.e., Women's Correctional or Delaware Correctional Institution, the location file admission and release data on the hard institution was included in the dataset.
 - Excluded from the dataset were Central Violation of Probation, Plummer House or Sussex Halfway House Work Release cases that were not related to a location file *hard* institution admission/release record.

The re-admission analysis file was produced by joining the latest available offender identification (SBI, and demographic information such as name, date of birth, race), DOC admission history (CJIS) and placement data (DYRS facility and contracted III, IV and V programs).

Appendix

Historical Recidivism Rates

The following appendix contains recidivism rates for programs that have not been active since FY02. The programs are grouped by dispositional level.

Historical Recidivism Rates

Display 34, Level V Historical Program Felony Recidivism Rates

Alternative Rehabilitative Community Felony Recidivism Rates

Time Period	N. Released	Months Since Release			
		6 Months	12 Months	18 Months	24 Months
FY 95	1	0%	0%	0%	100%
FY 96	3	67%	67%	67%	67%
FY 98	3	100%	100%	100%	100%

A description was not available from DYRS for this program.

Corrections Corporation of America, Liberty County, Felony Recidivism Rates

Time Period	N. Released	Months Since Release			
		6 Months	12 Months	18 Months	24 Months
FY 00	15	40%	87%	93%	93%
FY 01	6	33%	83%	83%	83%

Liberty County provides pre-vocational, strict behavioral modification and on-site educational programming for males 12 to 18 years of age.

Gannondale, Secure, Felony Recidivism Rates

Time Period	N. Released	Months Since Release			
		6 Months	12 Months	18 Months	24 Months
FY 96	2	0%	0%	50%	50%
FY 97	1	0%	0%	0%	0%
FY 99	1	0%	0%	0%	0%
FY 00	1	0%	0%	100%	100%
FY 01	1	0%	0%	0%	0%

Gannondale is a secure program for female offenders.

Rebound, Secure, Felony Recidivism Rates

Time Period	N. Released	Months Since Release			
		6 Months	12 Months	18 Months	24 Months
FY 95	1	0%	0%	0%	0%
FY 96	2	50%	100%	100%	100%

A description was not available from DYRS for this program.

C.C.A., Shelby Training School Felony Recidivism Rates

Time Period	N. Released	Months Since Release			
		6 Months	12 Months	18 Months	24 Months
FY 95	10	50%	60%	90%	100%
FY 96	5	40%	40%	60%	80%
FY 97	8	50%	88%	88%	88%
FY 98	12	50%	75%	92%	92%
FY 99	11	55%	82%	82%	91%
FY 00	14	62%	85%	85%	85%
FY 01	25	56%	72%	80%	88%
FY 02	16	50%	88%	100%	100%
FY 03	2	100%	100%	100%	100%

Shelby Training School provides pre-vocational, on-site educational, and zero tolerance behavioral programming for males 12 to 18 years of age.

Historical Recidivism Rates

Display 35, Level IV Historical Program Felony Recidivism Rates

Abraxas, Drug Sellers, Felony Recidivism Rates

Time Period	N. Released	Months Since Release			
		6 Months	12 Months	18 Months	24 Months
FY 95	3	33%	67%	67%	100%
FY 96	5	60%	80%	80%	80%

A description was not available from DYRS for this program.

Abraxas, Intensive, Felony Recidivism Rates

Time Period	N. Released	Months Since Release			
		6 Months	12 Months	18 Months	24 Months
FY 95	1	0%	0%	0%	0%

A description was not available from DYRS for this program.

Abraxas, Long Term, Felony Recidivism Rates

Time Period	N. Released	Months Since Release			
		6 Months	12 Months	18 Months	24 Months
FY 95	2	0%	100%	100%	100%
FY 96	8	13%	50%	75%	75%
FY 97	2	50%	100%	100%	100%

A description was not available from DYRS for this program.

Abraxas, Short Term, Felony Recidivism Rates

Time Period	N. Released	Months Since Release			
		6 Months	12 Months	18 Months	24 Months
FY 96	3	33%	33%	67%	67%
FY 99	1	0%	0%	100%	100%

A description was not available from DYRS for this program.

A.R.C., General, Felony Recidivism Rates

Time Period	N. Released	Months Since Release			
		6 Months	12 Months	18 Months	24 Months
FY 95	4	75%	75%	75%	100%
FY 96	15	53%	67%	73%	87%
FY 97	2	0%	0%	0%	50%
FY 98	3	33%	33%	33%	33%

A description was not available from DYRS for this program.

A.R.C., Pre-Release, Felony Recidivism Rates

Time Period	N. Released	Months Since Release			
		6 Months	12 Months	18 Months	24 Months
FY 98	1	100%	100%	100%	100%

A description was not available from DYRS for this program.

A.R.C., Special, Felony Recidivism Rates

Time Period	N. Released	Months Since Release			
		6 Months	12 Months	18 Months	24 Months
FY 95	1	0%	0%	100%	100%

A description was not available from DYRS for this program.

Benedictine School Felony Recidivism Rates

Time Period	N. Released	Months Since Release			
		6 Months	12 Months	18 Months	24 Months
FY 97	1	0%	0%	0%	0%

A description was not available from DYRS for this program.

Bowling Brook Preparatory School Felony Recidivism Rates

Time Period	N. Released	Months Since Release			
		6 Months	12 Months	18 Months	24 Months
FY 95	5	0%	20%	40%	40%
FY 96	9	11%	11%	44%	67%
FY 97	2	50%	100%	100%	100%
FY 98	4	50%	75%	75%	75%
FY 99	10	0%	60%	70%	80%
FY 00	6	17%	33%	50%	83%
FY 01	3	33%	67%	67%	67%
FY 02	3	0%	67%	67%	67%
FY 03	1	0%	100%	100%	100%

Bowling Brook provides normative culture, substance abuse group and educational programming for males between the ages of 16 and 19.

The Bridge, Long Term, Felony Recidivism Rates

Time Period	N. Released	Months Since Release			
		6 Months	12 Months	18 Months	24 Months
FY 95	4	0%	0%	50%	50%
FY 96	5	0%	20%	20%	20%
FY 97	1	100%	100%	100%	100%
FY 98	2	100%	100%	100%	100%
FY 99	6	0%	17%	17%	33%
FY 00	3	0%	33%	33%	33%
FY 01	3	33%	33%	67%	67%
FY 02	2	0%	50%	50%	50%

The Bridge, Long Term, provides alcohol and substance abuse treatment for juveniles between the ages of 14 and 19.

Historical Recidivism Rates

The Bridge, Short Term, Felony Recidivism Rates

Time Period	N. Released	Months Since Release			
		6 Months	12 Months	18 Months	24 Months
FY 95	8	38%	38%	38%	38%
FY 96	2	50%	50%	50%	50%
FY 98	2	50%	50%	50%	50%
FY 01	1	0%	0%	0%	0%

The Bridge, Short Term, provides alcohol and substance abuse treatment for juveniles between the ages of 14 and 19.

Brown Schools at Laurel Ridge Felony Recidivism Rates

Time Period	N. Released	Months Since Release			
		6 Months	12 Months	18 Months	24 Months
FY 00	1	0%	0%	0%	0%
FY 01	1	0%	0%	0%	100%
FY 02	2	0%	0%	0%	0%

A description was not available from DYRS for this program.

Brown Schools at Shadow Mountain, General, Felony Recidivism Rates

Time Period	N. Released	Months Since Release			
		6 Months	12 Months	18 Months	24 Months
FY 99	1	0%	100%	100%	100%
FY 00	1	0%	0%	0%	0%
FY 01	2	0%	100%	100%	100%

A description was not available from DYRS for this program.

Charter Treatment Felony Recidivism Rates

Time Period	N. Released	Months Since Release			
		6 Months	12 Months	18 Months	24 Months
FY 95	9	44%	56%	56%	56%
FY 96	3	0%	67%	67%	67%

A description was not available from DYRS for this program.

Concern, Treatment Unit, Felony Recidivism Rates

Time Period	N. Released	Months Since Release			
		6 Months	12 Months	18 Months	24 Months
FY 95	2	0%	50%	50%	50%
FY 96	1	0%	0%	0%	0%
FY 97	1	0%	100%	100%	100%

A description was not available from DYRS for this program.

Devereux Felony Recidivism Rates

Time Period	N. Released	Months Since Release			
		6 Months	12 Months	18 Months	24 Months
FY 96	1	100%	100%	100%	100%
FY 97	1	0%	0%	100%	100%
FY 01	1	0%	0%	0%	0%

A description was not available from DYRS for this Department of Education program.

Excelsior Youth Center Felony Recidivism Rates

Time Period	N. Released	Months Since Release			
		6 Months	12 Months	18 Months	24 Months
FY 95	5	0%	0%	20%	40%
FY 96	6	17%	17%	33%	50%
FY 97	3	0%	33%	33%	33%
FY 98	4	0%	25%	25%	25%
FY 99	2	0%	50%	50%	50%
FY 00	7	0%	0%	0%	14%
FY 01	8	13%	25%	25%	25%
FY 02	10	0%	0%	0%	0%
FY 03	3	0%	0%	33%	67%

Excelsior Youth Center provides programming for females ages 12 to 18 years of age who are emotionally and behaviorally disturbed. The individualized treatment includes individual psychotherapy, group psychotherapy, family counseling, and peer group interaction.

Gannondale, General, Felony Recidivism Rates

Time Period	N. Released	Months Since Release			
		6 Months	12 Months	18 Months	24 Months
FY 95	4	0%	0%	0%	0%
FY 96	3	0%	0%	33%	33%
FY 97	2	0%	0%	0%	0%
FY 98	1	0%	0%	0%	0%
FY 99	2	0%	0%	0%	0%
FY 00	1	0%	0%	100%	100%
FY 01	2	0%	0%	0%	0%

Gannondale provides staff secure educational programs, organized athletic competitions, leisure time activities, arts and crafts, and individual and group counseling.

George Junior Republic, Diagnostic, Felony Recidivism Rates

Time Period	N. Released	Months Since Release			
		6 Months	12 Months	18 Months	24 Months
FY 96	1	0%	0%	100%	100%
FY 01	1	0%	100%	100%	100%

A description was not available from DYRS for this program.

Historical Recidivism Rates

George Junior Republic, Drug and Alcohol, Felony Recidivism Rates

Time Period	N. Released	Months Since Release			
		6 Months	12 Months	18 Months	24 Months
FY 00	1	0%	0%	0%	0%

A description was not available from DYRS for this program.

George Junior Republic, General, Felony Recidivism Rates

Time Period	N. Released	Months Since Release			
		6 Months	12 Months	18 Months	24 Months
FY 95	2	50%	100%	100%	100%
FY 96	8	88%	100%	100%	100%
FY 97	2	50%	50%	100%	100%
FY 99	9	33%	44%	44%	56%
FY 00	4	0%	25%	75%	75%
FY 01	7	57%	71%	100%	100%
FY 02	8	75%	88%	100%	100%

George Junior Republic, General, provides a general treatment program for juveniles with step-down Level III Group Home availability.

Grace Cottage, Short Term, Felony Recidivism Rates

Time Period	N. Released	Months Since Release			
		6 Months	12 Months	18 Months	24 Months
FY 99	18	17%	22%	28%	28%
FY 00	20	5%	10%	10%	25%
FY 01	15	0%	7%	13%	20%
FY 02	25	0%	16%	16%	24%
FY 03	1	0%	0%	0%	0%

Grace Cottage provided short-term residential treatment programming for females between the ages of 13 and 18 with supplemental community based services. Grace Cottage did not operate from December 24, 2003, through January 18, 2005.

KidsPeace, Dual Diagnosis Program, Felony Recidivism Rates

Time Period	N. Released	Months Since Release			
		6 Months	12 Months	18 Months	24 Months
FY 99	2	0%	0%	0%	0%

A description was not available from DYRS for this program.

KidsPeace, General, Felony Recidivism Rates

Time Period	N. Released	Months Since Release			
		6 Months	12 Months	18 Months	24 Months
FY 95	5	80%	80%	100%	100%
FY 96	7	14%	14%	43%	57%
FY 97	4	0%	0%	0%	25%
FY 98	6	0%	50%	67%	67%
FY 02	1	0%	100%	100%	100%
FY 03	1	0%	0%	0%	0%

KidsPeace’s General program provides 24-hour psychiatric care for juveniles 6 to 18 years of age that require longer-term supervision, residential, clinical, and educational services.

KidsPeace, Intensive, Felony Recidivism Rates

Time Period	N. Released	Months Since Release			
		6 Months	12 Months	18 Months	24 Months
FY 95	1	0%	100%	100%	100%
FY 96	1	0%	0%	0%	0%
FY 97	6	0%	0%	17%	17%
FY 98	2	0%	0%	50%	50%
FY 99	1	0%	0%	0%	0%
FY 01	1	0%	0%	0%	0%
FY 02	1	0%	0%	0%	0%

KidsPeace’s Intensive program provides highly individualized, staff-secure, 24-hour psychiatric care for offenders 6 to 18 years of age requiring intensive clinical, recreational and educational services.

Mille Lacs Academy, Adolescent, Felony Recidivism Rates

Time Period	N. Released	Months Since Release			
		6 Months	12 Months	18 Months	24 Months
FY 95	5	20%	40%	60%	60%
FY 96	6	67%	67%	67%	67%
FY 97	3	67%	67%	67%	67%
FY 98	1	100%	100%	100%	100%

A description was not available from DYRS for this program.

Mille Lacs Academy, Early Adolescent, Felony Recidivism Rates

Time Period	N. Released	Months Since Release			
		6 Months	12 Months	18 Months	24 Months
FY 97	1	0%	0%	0%	0%

A description was not available from DYRS for this program.

Historical Recidivism Rates

National Center Institute and Alternatives Felony Recidivism Rates

Time Period	N. Released	Months Since Release			
		6 Months	12 Months	18 Months	24 Months
FY 96	1	0%	0%	0%	100%
FY 99	1	0%	0%	0%	0%

A description was not available from DYRS for this program.

New Hope Treatment Centers, Crisis Program Felony Recidivism Rates

Time Period	N. Released	Months Since Release			
		6 Months	12 Months	18 Months	24 Months
FY 00	1	100%	100%	100%	100%

New Hope Treatment Centers' Crisis Program provides psychiatric crisis stabilization services to emotionally disturbed children and adolescents 9 to 18 years of age.

New Hope Treatment Centers, Palmetto Point Program Felony Recidivism Rates

Time Period	N. Released	Months Since Release			
		6 Months	12 Months	18 Months	24 Months
FY 02	2	0%	0%	50%	50%
FY 03	1	0%	0%	0%	0%

New Hope Treatment Center's Palmetto Point Program provides long-term daily psychiatric treatment female sex offenders 11.6 to 17.6 years of age.

Pathways Felony Recidivism Rates

Time Period	N. Released	Months Since Release			
		6 Months	12 Months	18 Months	24 Months
FY 98	7	43%	71%	86%	100%
FY 99	2	0%	0%	50%	50%
FY 00	1	0%	0%	0%	0%

Pathways provides substance abuse counseling, individual and group therapy for juveniles between the ages of 12 and 19.

The Pines, The Cooperative Program, Felony Recidivism Rates

Time Period	N. Released	Months Since Release			
		6 Months	12 Months	18 Months	24 Months
FY 00	2	0%	0%	0%	0%
FY 03	1	100%	100%	100%	100%

The Pines' Cooperative Program provides treatment for juveniles with severe emotional and behavioral problems and significant developmental disabilities.

The Pines, Young Men and Young Women's Center Felony Recidivism Rates

Time Period	N. Released	Months Since Release			
		6 Months	12 Months	18 Months	24 Months
FY 00	1	0%	0%	0%	0%
FY 01	2	0%	0%	0%	0%
FY 02	2	50%	50%	50%	50%
FY 03	1	0%	100%	100%	100%

The Pines' Young Men and Young Women's Centers provide treatment for juveniles who have been diagnosed with psychiatric and behavioral problems.

Psychotherapeutic Children's Services,
Transitional Living Program, Felony Recidivism Rates

Time Period	N. Released	Months Since Release			
		6 Months	12 Months	18 Months	24 Months
FY 95	12	42%	50%	58%	58%
FY 96	13	31%	46%	0%	0%
FY 97	12	33%	42%	58%	58%
FY 98	16	25%	50%	69%	75%
FY 99	1	0%	0%	0%	0%
FY 01	2	0%	50%	50%	50%

A description was not available from DYRS for this program.

Stetson School Felony Recidivism Rates

Time Period	N. Released	Months Since Release			
		6 Months	12 Months	18 Months	24 Months
FY 98	1	0%	0%	100%	100%
FY 99	1	0%	0%	0%	0%
FY 00	1	0%	0%	0%	100%

A description was not available from DYRS for this program.

Tarkio, General, Felony Recidivism Rates

Time Period	N. Released	Months Since Release			
		6 Months	12 Months	18 Months	24 Months
FY 96	13	38%	54%	69%	69%
FY 97	15	13%	40%	60%	67%
FY 98	11	27%	45%	91%	91%
FY 99	2	50%	50%	50%	100%

A description was not available from DYRS for this program.

Historical Recidivism Rates

Tarkio Academy, Sex Offender, Felony Recidivism Rates

Time Period	N. Released	Months Since Release			
		6 Months	12 Months	18 Months	24 Months
FY 97	3	33%	33%	33%	33%
FY 98	3	0%	33%	67%	67%
FY 99	4	0%	0%	0%	0%

A description was not available from DYRS for this program.

The Terraces, Long Term, Felony Recidivism Rates

Time Period	N. Released	Months Since Release			
		6 Months	12 Months	18 Months	24 Months
FY 96	1	0%	0%	0%	0%
FY 97	23	17%	43%	57%	70%
FY 98	3	67%	67%	100%	100%

A description was not available from DYRS for this program.

The Terraces, Short Term, Felony Recidivism Rates

Time Period	N. Released	Months Since Release			
		6 Months	12 Months	18 Months	24 Months
FY 97	14	21%	57%	57%	71%
FY 98	4	50%	50%	75%	75%

A description was not available from DYRS for this program.

Timber Ridge Felony Recidivism Rates

Time Period	N. Released	Months Since Release			
		6 Months	12 Months	18 Months	24 Months
FY 98	1	0%	0%	0%	0%

A description was not available from DYRS for this Department of Education program.

Today Inc., Re-Entry, Felony Recidivism Rates

Time Period	N. Released	Months Since Release			
		6 Months	12 Months	18 Months	24 Months
FY 95	3	33%	33%	33%	33%

A description was not available from DYRS for this program.

Victor Cullen Felony Recidivism Rates

Time Period	N. Released	Months Since Release			
		6 Months	12 Months	18 Months	24 Months
FY 95	6	33%	67%	67%	67%
FY 96	4	0%	25%	50%	75%

A description was not available from DYRS for this program.

VisionQuest, New Directions Shelter, Felony Recidivism Rates

Time Period	N. Released	Months Since Release			
		6 Months	12 Months	18 Months	24 Months
FY 97	1	0%	0%	0%	0%
FY 98	105	32%	59%	70%	81%
FY 99	192	36%	60%	69%	73%
FY 00	161	38%	58%	67%	79%
FY 01	76	33%	57%	66%	76%
FY 02	44	27%	48%	66%	70%

VisionQuest's New Directions Shelter provided educational services and shelter care for juveniles on administrative holds and aftercare revocations, or served as an interim placement for males ages 12 to 18 who were detained or incarcerated in a detention center or the Ferris School for Boys awaiting a secure Level IV residential placement.

The Woods Felony Recidivism Rates

Time Period	N. Released	Months Since Release			
		6 Months	12 Months	18 Months	24 Months
FY 99	1	0%	0%	100%	100%
FY 01	1	0%	0%	0%	0%

A description was not available from DYRS for this Department of Education program.

Historical Recidivism Rates

Display 36, Level III Historical Program Felony Recidivism Rates

A.R.C., Foster Care, Felony Recidivism Rates

Time Period	N. Released	Months Since Release			
		6 Months	12 Months	18 Months	24 Months
FY 96	2	50%	50%	50%	50%
FY 97	1	100%	100%	100%	100%
FY 98	1	0%	0%	0%	0%

A description was not available from DYRS for this program.

Brown Schools at Shadow Mountain, Foster Care, Felony Recidivism Rates

Time Period	N. Released	Months Since Release			
		6 Months	12 Months	18 Months	24 Months
FY 00	1	0%	0%	100%	100%
FY 01	1	0%	100%	100%	100%

A description was not available from DYRS for this program.

Catholic Charities Felony Recidivism Rates

Time Period	N. Released	Months Since Release			
		6 Months	12 Months	18 Months	24 Months
FY 96	4	50%	75%	75%	75%
FY 97	4	0%	0%	0%	0%
FY 98	2	0%	0%	0%	0%
FY 99	1	100%	100%	100%	100%

A description was not available from DYRS for this program.

Children's Choice Felony Recidivism Rates

Time Period	N. Released	Months Since Release			
		6 Months	12 Months	18 Months	24 Months
FY 97	3	0%	0%	0%	0%

A description was not available from DYRS for this program.

Concern, Foster Care, Felony Recidivism Rates

Time Period	N. Released	Months Since Release			
		6 Months	12 Months	18 Months	24 Months
FY 95	3	67%	100%	100%	100%
FY 96	2	0%	50%	50%	50%
FY 97	1	100%	100%	100%	100%

A description was not available from DYRS for this program.

Division of Family Services, Foster Care, Felony Recidivism Rates

Time Period	N. Released	Months Since Release			
		6 Months	12 Months	18 Months	24 Months
FY 97	1	0%	0%	0%	0%
FY 98	1	0%	0%	0%	0%
FY 99	1	0%	0%	0%	0%

A description was not available from DYRS for this program.

Father Flannigan's Boys Home Felony Recidivism Rates

Time Period	N. Released	Months Since Release			
		6 Months	12 Months	18 Months	24 Months
FY 98	1	0%	0%	0%	0%

A description was not available from DYRS for this program.

Home of Divine Providence Felony Recidivism Rates

Time Period	N. Released	Months Since Release			
		6 Months	12 Months	18 Months	24 Months
FY 00	1	0%	0%	0%	0%

A description was not available from DYRS for this program.

Impact, Foster Care, Felony Recidivism Rates

Time Period	N. Released	Months Since Release			
		6 Months	12 Months	18 Months	24 Months
FY 98	1	0%	0%	0%	0%
FY 99	1	0%	0%	0%	0%

A description was not available from DYRS for this program.

Impact, Independent Living, Felony Recidivism Rates

Time Period	N. Released	Months Since Release			
		6 Months	12 Months	18 Months	24 Months
FY 96	1	0%	0%	0%	0%

A description was not available from DYRS for this program.

Learning Experiences, Inc., Felony Recidivism Rates

Time Period	N. Released	Months Since Release			
		6 Months	12 Months	18 Months	24 Months
FY 96	1	0%	0%	0%	0%

A description was not available from DYRS for this program.

Historical Recidivism Rates

MR Respite Care Felony Recidivism Rates

Time Period	N. Released	Months Since Release			
		6 Months	12 Months	18 Months	24 Months
FY 98	1	0%	0%	0%	0%

A description was not available from DYRS for this program.

Northeast Treatment Center Felony Recidivism Rates

Time Period	N. Released	Months Since Release			
		6 Months	12 Months	18 Months	24 Months
FY 97	1	0%	0%	0%	0%
FY 98	1	100%	100%	100%	100%

A description was not available from DYRS for this program.

Seton Villa Felony Recidivism Rates

Time Period	N. Released	Months Since Release			
		6 Months	12 Months	18 Months	24 Months
FY 98	1	0%	0%	0%	0%
FY 99	2	0%	0%	0%	0%

A description was not available from DYRS for this program.

Sisters Reaching for Excellence Felony Recidivism Rates

Time Period	N. Released	Months Since Release			
		6 Months	12 Months	18 Months	24 Months
FY 99	5	0%	40%	40%	40%
FY 00	1	0%	0%	0%	0%

A description was not available from DYRS for this program.

Stepping Stones Felony Recidivism Rates

Time Period	N. Released	Months Since Release			
		6 Months	12 Months	18 Months	24 Months
FY 95	5	20%	20%	20%	20%
FY 96	5	60%	60%	60%	60%
FY 97	13	0%	15%	31%	31%
FY 98	6	33%	50%	50%	50%
FY 99	10	0%	30%	30%	40%
FY 00	3	67%	67%	67%	100%

Stepping Stones provides transitional independent living programming for adjudicated males 16 to 18 years of age.

Intentionally Blank