

---

# Delaware Juvenile Recidivism

---

## 1994 – 2005 Juvenile Level III, IV and V Recidivism Study

May 2006



State of Delaware  
Office Management and Budget  
Statistical Analysis Center

Delaware Juvenile Recidivism:  
1994 – 2005 Juvenile Level III, IV and V Recidivism Study.

Prepared by the Statistical Analysis Center, Office of Management and Budget, State of Delaware.

Authors:  
Jorge Rodríguez-Labarca, Senior Analyst,  
John P. O'Connell, Director.

State of Delaware Document Number: 100208-060601.

## Table of Contents

Executive Summary .....	1
Introduction.....	3
FY04 Recidivism Summary .....	4
FY04 12 Month Recidivism Rates.....	5
Interpreting Recidivism Results: A Caution.....	7
Different Measures of Recidivism.....	8
Total Re-arrest Patterns .....	8
Comparing Misdemeanor Plus Felony and Felony Only Re-Arrests Recidivism Rates .....	10
Re-admission Recidivism.....	12
Technical Note: Measuring Recidivism .....	14
Residential Level V, IV, and III Felony Recidivism Tables .....	15
Level V Felony Recidivism Rates .....	17
Level IV Felony Recidivism Rates .....	23
Level III Felony Recidivism Rates .....	47
Data Sources .....	59
Criminal Justice Information System Data.....	59
Juvenile Placement Data.....	60
Secure Placement Episodes .....	60
Level III, IV and V Recidivism Study Dataset.....	61
DYRS/DOC Re-admission Recidivism Dataset .....	62
Appendix.....	63
Historical Recidivism Rates .....	63

## Table of Displays

Level V Displays .....	17
Display 1, Level V Felony Recidivism Rates .....	17
Display 2, Ferris School for Boys Felony Recidivism Rates .....	18
Display 3, New Castle County Detention Center Adjudicated Felony Recidivism Rates .....	19
Display 4, Stevenson House Detention Center Adjudicated Felony Recidivism Rates .....	20
Display 5, Level V Small Program Felony Recidivism Rates.....	21
Level IV Displays .....	23
Display 6, Level IV Felony Recidivism Rates .....	23
Display 7, Chamberlain Academy, High Impact, Felony Recidivism Rates.....	24
Display 8, Clarinda Academy Felony Recidivism Rates.....	25
Display 9, Glen Mills Schools Felony Recidivism Rates.....	26
Display 10, Grace Cottage Felony Recidivism Rates.....	27
Display 11, Mountain Manor Felony Recidivism Rates.....	28
Display 12, Mowlds Cottage Felony Recidivism Rates .....	29
Display 13, Snowden Cottage Felony Recidivism Rates .....	30
Display 14, Springfield Academy Felony Recidivism Rates .....	31
Display 15, Today Inc., General, Felony Recidivism Rates.....	32
Display 16, VisionQuest, Boot Camp, Felony Recidivism Rates .....	33
Display 17, VisionQuest, Madalyn Program, Felony Recidivism Rates.....	34
Display 18, VisionQuest, Quest, Felony Recidivism Rates .....	35
Display 19, Level IV Small Program Felony Recidivism Rates .....	36
Level III Displays .....	47
Display 20, Level III Residential Felony Recidivism Rates.....	47
Display 21, Camelot, General, Felony Recidivism Rates.....	48
Display 22, Child, Inc., General, Felony Recidivism Rates .....	49
Display 23, Cornell Abraxas, Home Based Services, Felony Recidivism Rates .....	50
Display 24, Cornell Abraxas, Intensive Home Based Services, Felony Recidivism Rates.....	51
Display 25, People’s Place II, Felony Recidivism Rates.....	52

Display 26, Project Stay Free, Day Treatment Program, Felony Recidivism Rates.....	53
Display 27, Project Stay Free, Intensive Home Based Services, Felony Recidivism Rates.....	54
Display 28, Psychotherapeutic Children’s Services, Family Support Program, Felony Recidivism Rates.....	55
Display 29, Psychotherapeutic Children’s Services, Multisystemic Therapy Program, Felony Recidivism Rates.....	56
Display 30, Level III Small Program Felony Recidivism Rates.....	57
Historical Recidivism Displays.....	63
Display 31, Level V Historical Program Felony Recidivism Rates .....	64
Display 32, Level IV Historical Program Felony Recidivism Rates .....	65
Display 33, Level III Historical Program Felony Recidivism Rates .....	73

## **Table of Graphs**

Figure 1, FY04 Re-arrest Recidivism 1 Year Following Level V Release.....	8
Figure 2, FY04 Re-arrest Recidivism 1 Year Following Level IV Release .....	9
Figure 3, FY04 Re-arrest Recidivism 1 Year Following Level III Release .....	9

## **Table of Tables**

Table 1, Youth Arrested for a Felony within 12 Months of Release from a Level V Episode, FY04 Releases.....	5
Table 2, Youth Arrested for a Felony within 12 Months of Release from a Level IV Episode, FY04 Releases.....	6
Table 3, Youth Arrested for a Felony within 12 Months of Release from a Level III Episode, FY04 Releases.....	7
Table 4, Delaware 12 Month Juvenile Recidivism Rates: A Comparison of Misdemeanor- Felony and Felony Arrest Analysis.....	11
Table 5, A Comparison of DYRS and DOC Re-admission Rates .....	13
Table 6, Level V Felony Recidivism Rates .....	15

Intentionally Blank

## Executive Summary

This study of Delaware juvenile recidivism provides a comprehensive summary of re-arrest patterns when juvenile offenders are released back to the *street* after concluding a stay in a locked secure facility, a staff secure or a non-secure program. In many cases, a juvenile moves between programs before being released to the community. For instance, the typical Ferris School for Boys placement episode includes three contiguous placements: (1) admission to the Detention Center, (2) admission to the Ferris School, and (3) transition back to the community through Mowlds Cottage. In this case, time *at-risk* in the community does not start until the juvenile leaves Mowlds Cottage.

FY04 Juvenile Recidivism:

- Level V locked secure facility releases: 45 percent were re-arrested for a felony within one year (page 17.)
- Level IV staff secure programs releases: 44 percent were re-arrested for a felony within one year (page 23.)
- Level III non-secure program releases: 31 percent were re-arrested for a felony within one year (page 47.)

Long term juvenile recidivism rates have decreased over the past decade:

- Level V recidivism has decreased from 60 percent to 45 percent.
- Level IV recidivism had decreased from 54 percent to 44 percent.
- Level III recidivism has decreased from 45 percent to 31 percent.

The decrease in long-term juvenile recidivism rates is associated with the reorganization of the Division of Youth Rehabilitative Services (DYRS) incarceration, placement and treatment programs, which were implemented at the same time as the Dispositional Guidelines for Juveniles in the mid-1990s.

While short-term juvenile recidivism rates have improved significantly since the mid-1990s, long-term recidivism rates still remain an important issue. After two full years of being at-risk in the community up to 60 percent of juveniles released from DYRS programs have been re-arrested for a felony. Furthermore, four years after release from Ferris School, the main Level V juvenile facility, 70 percent of these offenders have been sentenced to an adult Level V facility (page 13.)

Intentionally Blank



## Introduction

This study provides comprehensive recidivism rates for juvenile offenders released from out of home residential placements by the Department of Services for Children, Youth and Their Families (DSCYF) Division of Youth Rehabilitative Services (DYRS) between 1994 and 2005.<sup>1</sup> There are two major levels of security related to out-of-home residential placements: secure and non-secure. Under Delaware's Dispositional Guidelines for Juveniles, youth can be sentenced to these different program levels as well as probation. The program levels reflect a graduated approach that requires increasingly intensive programming according to risk and need assessments of each juvenile. The more intensive programming corresponds to secure placements, the less intensive to non-secure placements:

- Level V, the most intensive programming available, is comprised of locked secure institutional settings like the Ferris School for Boys.
- Level IV staff secure programs provide 24 hour supervision and general diagnostic, substance abuse and sex offender treatment.
- Level III programs provide programming in non-secure settings.

Most of the programming is provided by contracted private organizations both in Delaware and out-of-state. Recidivism rates and detailed juvenile offender profiles are presented for 121 separate institutions, public and private residential programs, and Level III programs.

The main measure of recidivism used in this study is a felony re-arrest – not a re-conviction or a re-admission – following release from a placement. Recidivism rates are reported for four different at-risk intervals: 6, 12, 18, and 24 months. Many juvenile recidivism studies report truncated results because they stop following juveniles once they reach the age of majority. This study does not truncate results because Delaware arrests can be tracked through an offender's adult years.

Juvenile justice policymakers established the use of the felony re-arrest rate as the main measure of recidivism for this series of studies in October of 1998. It was determined that the felony re-arrest rate tapped some of our most reliable data and that, furthermore, it provides the possibility for a *fairer* cross-jurisdictional comparison of recidivism rates. While the felony re-arrest rate is a viable measure of recidivism, it is preferable to measure recidivism using multiple measures. Where re-arrest highlights public safety risks to the community, re-detention underscores the court's willingness to remove a juvenile arrestee from the community, at least temporarily, and re-incarceration would highlight the Family Court's affirmation of guilt for a new crime.

As a means of providing a fuller understanding of juvenile criminal behavior and recidivism two additional views of recidivism are provided in the introductory part this study. In addition to the *main* felony re-arrest measure, the full view of all re-arrests (by type of arrest)

---

<sup>1</sup> Due to the use of the latest available placement data for each edition of this report, the release counts, felony recidivism rates, and historical profiles presented in this document are not comparable to information presented in previous reports. See page 61 for a detailed explanation of how the dataset was constructed for this study.

is examined for FY04. Second, the FY95 to FY04 felony plus the misdemeanor re-arrest pattern is examined.

## FY04 Recidivism Summary

Juveniles were tracked for at least 12 months after their release from 4,648 Level V placement episodes that occurred between FY95 and FY04<sup>2</sup>. Between FY96 (the State's fiscal year runs from July to June) and FY04 (the last year that a full cohort of releases could be studied for being at-risk for 12 months,) the recidivism rate has decreased from 60 percent for youth released during FY96 to 45 percent for those released in FY04. The average length of stay in a Level V secure setting increased between FY95 and FY00 from 3.1 to 4.5 months. Since then, the Level V average length of stay decreased to 3.3 months. See page 17 for more details on Level V recidivism rates.

Juveniles were tracked for at least 12 months after their release from 4,440 Level IV placement episodes. Excluding an increase in the recidivism rate between FY95 and FY96, the recidivism rate decreased from 54 percent in FY96 to 44 percent in FY04 – a 19 percent decrease in felony re-arrest recidivism. The average length of stay in a Level IV secure setting decreased during this time period from 7.0 to 3.1 months. See page 23 for more details on Level IV recidivism rates.

Juveniles were tracked for at least 12 months after their release from 3,669 Level III placement episodes. Excluding an increase in the recidivism rate between FY97 and FY98, the recidivism rate has decreased from 37 percent in FY96 to 31 percent in FY04 – a 16 percent reduction in felony re-arrest recidivism. The average length of stay in a Level III non-secure setting decreased during this time period from 5.9 months to about two months. See page 47 for more details on Level III recidivism rates.

The tables below – Tables 1, 2, 3 – provide the FY04 felony re-arrest and summary by individual program within each level of sanction. Recidivism is reported at one year at-risk after release from the secure placement episode. These recidivism results are the most recent available because a full year must pass before recidivism statistics can be calculated for a cohort.

---

<sup>2</sup> See the explanations of placement episodes on pages 14 and 60 of this document.

## FY04 12 Month Recidivism Rates

The Level V FY04 release cohort recidivism rate at 12 months at-risk for a felony arrest is 45 percent. The following table shows the FY04 12 month recidivism rate for Level V programs.

Table 1, Youth Arrested for a Felony within  
12 Months of Release from a Level V Episode, FY04 Releases

Program	No. Released	No. Arrested	Recidivism Rate
New Castle County Detention Center, DE	322	143	44%
Stevenson House Detention Center, DE	205	86	42%
The Ferris School for Boys, DE	145	73	50%
C.C.A., South West Indiana Youth Village, Drug and Alcohol, IN	3	0	0%
Level V Episodes <sup>3</sup>	578	259	45%

---

<sup>3</sup> Please note that secure placement episode statistics within a level are not additive. Double counting would occur if an attempt was made to sum to a Level V total because a Level V episode may include admissions to more than one Level V program.

The Level IV FY04 release cohort recidivism rate for a felony arrest is 44 percent. The following table shows the FY04 12 month recidivism rate for Level IV programs.

Table 2, Youth Arrested for a Felony within  
12 Months of Release from a Level IV Episode, FY04 Releases

Program	No. Released	No. Arrested	Recidivism Rate
VisionQuest, Boot Camp, PA	135	64	47%
Snowden Cottage, DE	74	40	55%
Mowlds Cottage, DE	52	24	46%
Glenn Mills Schools, PA	39	17	44%
Grace Cottage, DE	34	8	24%
Clarinda Academy, IA	28	13	46%
Springfield Academy, SD	23	14	61%
VisionQuest, Quest, PA	20	7	35%
Chamberlain Academy, High Impact, SD	16	5	31%
Ministry of Caring, House of Joseph II, DE	8	3	38%
Diversified Treatment Alternatives, PA	6	1	17%
Mountain Manor, MD	6	2	33%
New Hope, Starting Pointe, SC	6	1	17%
Chamberlain Academy, General, SD	5	2	40%
Grace Cottage, Shelter, DE	4	1	25%
Today Inc, New Dawn Program, PA	3	2	67%
Today Inc., General, PA	3	3	100%
VisionQuest, Madalyn Program, PA	3	0	0%
Au Clair School, General, DE	2	1	50%
George Junior Republic, Special, PA	2	0	0%
Hennepin County Home School, MN	2	1	50%
Manatee Palms Youth Service, FL	2	0	0%
New Hope, Way Point Program, SC	2	2	0%
The Pines, Behavioral Program, VA	2	0	0%
Benchmark Behavioral Health, UT	1	0	0%
Cornell Abraxas Youth Center, PA	1	0	0%
KidsPeace, Diagnostic, PA	1	1	100%
New Hope, Triad Program, SC	1	0	0%
Renewal Center, PA	1	1	100%
Riverside Treatment Services, Inc., D.C.	1	1	100%
The Pines, Adolescent Male Insight Prg., TN	1	0	0%
The Pines, General, VA	1	0	0%
Level IV Episodes <sup>4</sup>	468	204	44%

<sup>4</sup> A total of 468 releases occurred during FY04 from Level IV episodes. However, one juvenile died within six months of his release from a Level IV episode. The recidivism rates presented in this analysis are based on the number of juveniles alive at the end of each at-risk period.

The Level III FY04 release cohort recidivism rate at 12 months at-risk for a felony arrest is 31 percent. The following table shows the FY04 12 month recidivism rate for Level III programs.

Table 3, Youth Arrested for a Felony within  
12 Months of Release from a Level III Episode, FY04 Releases

Program	No. Released	No. Arrested	Recidivism Rate
Project Stay Free, Intensive Home Based, DE	220	74	34%
Lead Inc., Home Based Services, DE	180	55	31%
People's Place II, DE	172	45	26%
Cornell Abraxas, Home Based Services, DE	112	27	24%
Cornell Abraxas, Intensive Home Based, DE	105	35	33%
Psychotherapeutic Children's Services, Multisystemic Therapy Program, DE	93	35	38%
Project Stay Free, Day Treatment, DE	62	25	40%
Camelot, General, DE	35	10	29%
Psychotherapeutic Children's Services, Family Support Program, DE	14	2	14%
Child, Inc. General, DE	3	0	0%
YMCA, Weekly Program, DE	1	1	100%
Level III Episodes	938	290	31%

## Interpreting Recidivism Results: A Caution

Interpretations of the recidivism results in this study can be made for general types of programs like Level V or Level IV and for a specific program over time. Caution, however, should be exercised when comparing a specific program with another. It might be assumed that all Level IV programs are similar and therefore comparable in terms of recidivism.

Whereas this may be true for some programs, it may not be for others. For instance, a Level IV shelter where juveniles are held for two or three weeks awaiting placement is not the same as a one year, or even a three month Level IV program that provides extensive counseling. Juvenile programs also differ significantly in the type of offender they are willing to serve: not all programs are geared toward providing services to youth with multiple unsuccessful prior placements, some prefer instead to service offenders without prior placements.

It is also important to realize that youth with more extensive criminal histories are more likely to have higher recidivism rates. Prior criminal history patterns differ significantly from program to program and even from year to year within a program. Fortunately, this study provides length of stay and prior criminal history summaries for each program. The historical profiles provided in this report should be helpful in framing discussions regarding juvenile recidivism.

## Different Measures of Recidivism

Measuring recidivism as a re-arrest or a re-admission is an important research and policy issue. It is preferable to measure recidivism using multiple measures where re-arrest highlights public safety risks to the community, re-detention underscores the court's willingness to remove a juvenile arrestee from the community, at least temporarily, and re-incarceration highlights the Family Court's affirmation of guilt for a new crime.

This study, at the request of policy makers in October 1998, assesses DYRS recidivism in terms of felony re-arrest. This, it is believed, provides the possibility for a *fairer* cross jurisdictional comparison of recidivism rates. Re-detention information, although not used as an explicit recidivism measure, is reported as a part of the *offender profile* in this study. That is, the reader can compare the relationship between the average number of prior detention episodes for a specific release cohort and that cohort's felony re-arrest rate. No information is provided in this report regarding re-conviction because the data systems are not systematically capable of providing this information. While the major purpose of this report is to provide felony re-arrest recidivism rates for the 15,149 release events between July 1994 and June 2005 from DYRS Level III, Level IV and Level V programs and institutions, re-arrest information is also collected for misdemeanors and technical or administrative measures. This more extensive arrest information provides valuable background information regarding juvenile crime patterns after release from DYRS programs and institutions.

## Total Re-arrest Patterns

The pie charts below show FY04 re-arrest recidivism rates for released juveniles at-risk at least 12 months. Three different types of recidivism are displayed in each of these graphs: (1) Recidivism where a felony arrest constitutes the most serious criminal activity after release, and (2) where a misdemeanor arrest constitutes the most serious criminal event, and (3) violation of probation (VOP) arrests.

Figure 1, FY04 Re-arrest Recidivism 1 Year Following Level V Release

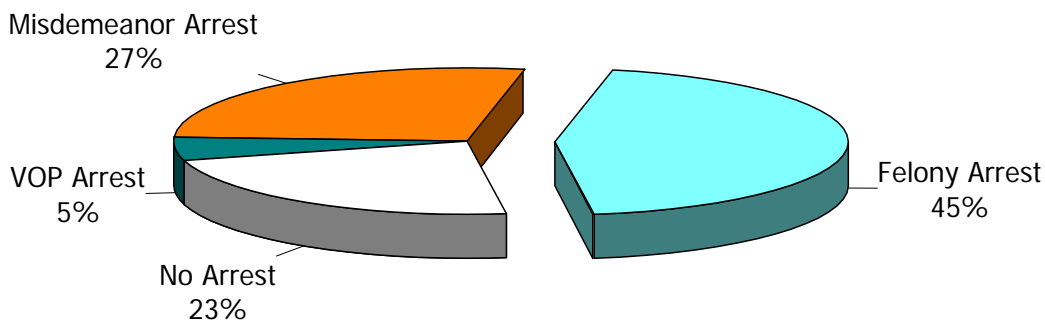


Figure 1 shows the recidivism patterns for the 578 FY04 releases from Level V placement episodes after one year at-risk. Seventy-seven percent of the Level V releasees were re-arrested within one year. Forty-five percent had felony re-arrests, 27 percent had re-arrests where a misdemeanor was the most serious charge, and another five percent were re-arrested only for violations of probation.

Figure 2 shows the recidivism patterns for the 468 FY04 releases from a Level IV placement episode. Seventy-four percent of the Level IV releasees were re-arrested within one year. Forty-four percent had felony re-arrests, 29 percent had re-arrests where a misdemeanor was the most serious charge, and another seven percent were re-arrested only for violations of probation. When the full range of re-arrest recidivism is considered, there is very little difference whether a juvenile was released from a Level IV or V program.

Figure 3 shows the recidivism patterns for the 938 FY04 releases from a Level III placement episode. Seventy-four percent of the Level III releasees were re-arrested within one year. Thirty-one percent had felony re-arrests, 37 percent had re-arrests where a misdemeanor was the most serious charge, and another six percent were re-arrested only for violations of probation. Level III releases were just as likely to be re-arrested in the year following release from a program, but they were also less likely to be re-arrested for a felony.

Figure 2, FY04 Re-arrest Recidivism 1 Year Following Level IV Release

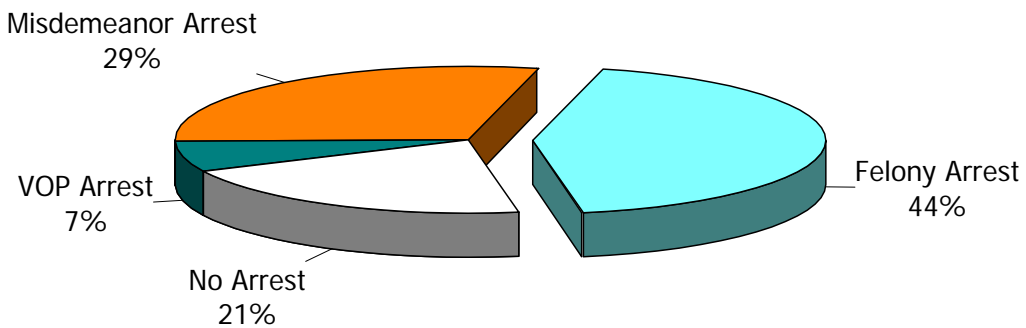
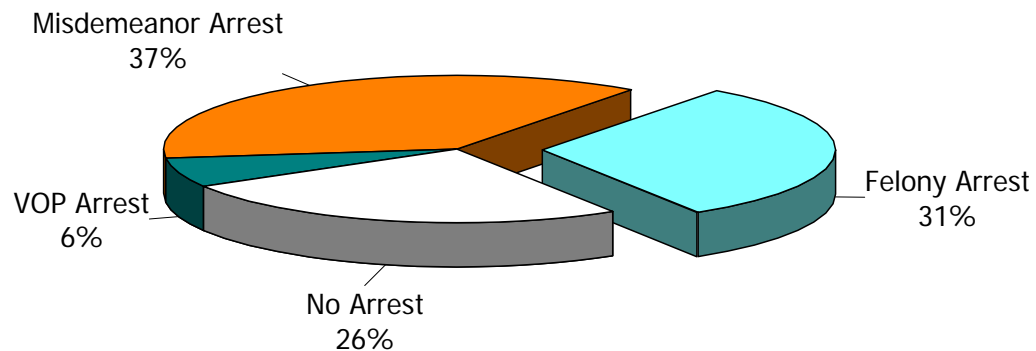


Figure 3, FY04 Re-arrest Recidivism 1 Year Following Level III Release



## Comparing Misdemeanor Plus Felony and Felony Only Re-Arrests Recidivism Rates

Another perspective on recidivism is arrests for new crimes only. Proponents of this perspective exclude arrests for violations of probation. Many violations of probation arrests are closely associated with intensive supervision programs where juveniles are arrested, not for breaking the law, but for violating the conditions of their sentencing orders, including failing to fully comply with the conditions of the intensive supervision program.

In some situations, violations of probation, when added to the recidivism for new crimes can make an intensive supervision program appear more punitive than it was designed to be. For example, the Serious Juvenile Offender program had 38 percent more technical arrests than a similar group of delinquents that were not part of the program.<sup>5</sup> Although some may view an arrest for a violation of probation as a less serious than an arrest for a new crime, an arrest for a technical violation is just as likely to result in a re-incarceration as a felony arrest (70 percent versus 71 percent) and much *more* likely to result in a re-incarceration than a misdemeanor arrest (70 percent versus 48 percent).<sup>6</sup> Violations of probation are by far the leading charge at admission to the detention centers and a significant contributor to their overcrowding. Therefore, while conceptually not as serious as a new crime, the impact of a technical violation arrest is just as significant as a new felony arrest. Because this finding is still new, many policy makers are more comfortable assessing recidivism in terms of arrest for new crimes only.

Table 4, *Delaware 12 Month Juvenile Recidivism Rates*, shows that the reduction in felony re-arrest recidivism was actually greater for Level V than for Level IV programs. Between FY96 and FY04, the 12 month Level V felony re-arrest recidivism rate decreased from 60 percent to 45 percent: a 15 percentage point decrease. For the same time period the 12 month Level IV felony re-arrest recidivism rate, decreased ten percentage points – from 54 percent to 44 percent. The decrease in felony and misdemeanor recidivism is similar over time to the reduction in felony re-arrest recidivism. Between FY96 and FY04, the reduction in felony and misdemeanor re-arrests was eight percentage points for Level V and five percentage points for Level IV. It is interesting to note that even though the Delaware juvenile justice system implemented graduated sanctions in the mid-1990s, there has been a more significant decrease in felony re-arrests (ten to 15 percentage points) than for the combination of misdemeanor plus felony re-arrests (five to eight percentage points).

---

<sup>5</sup> Delaware's Serious Juvenile Offender Program, SAC, August 2004, p. 24.

<sup>6</sup> *Ibid*, p. 3.



Table 4, Delaware 12 Month Juvenile Recidivism Rates:  
A Comparison of Misdemeanor-Felony and Felony Arrest Analysis

Level Release Cohort	<u>Misdemeanor and Felony Analysis</u>			<u>Felony Analysis</u>		
	N. Released	N. Arrested	Rate	N. Released	N. Arrested	Rate
Level IV						
FY 95	155	108	70%	155	74	48%
FY 96	268	209	78%	268	144	54%
FY 97	299	224	75%	299	152	51%
FY 98	495	388	78%	495	244	49%
FY 99	534	410	77%	534	251	47%
FY 00	528	379	72%	528	230	44%
FY 01	519	355	68%	519	211	41%
FY 02	635	453	71%	635	261	41%
FY 03	499	363	73%	499	227	46%
FY 04	468	340	73%	468	204	44%
Level V						
FY 95	360	285	79%	360	210	58%
FY 96	489	393	80%	489	293	60%
FY 97	447	347	78%	447	232	52%
FY 98	363	276	76%	363	164	45%
FY 99	398	291	73%	398	185	47%
FY 00	482	340	71%	482	208	43%
FY 01	523	363	69%	523	223	43%
FY 02	512	370	72%	512	238	47%
FY 03	496	364	73%	496	218	44%
FY 04	578	416	72%	578	259	45%

Note: Analysis excludes arrests for municipal ordinances, non-DUI related traffic offenses and technical violations.

## Re-admission Recidivism

Policy makers decided, in October 1998, that Delaware should assess DYRS recidivism in terms of felony re-arrests. Measuring recidivism in terms of re-arrests allows us to know what the propensity to be arrested for new crimes is and to track repeat criminality over time. Re-arrest recidivism gives the reader a sense of the degree to which DYRS can increase public safety. The expectation is that the programming offered by DYRS to juvenile offenders will decrease their propensity to commit future crimes and thus re-admission to juvenile or adult facilities. This study reports on juvenile re-detention and re-incarceration information so that readers can assess the relationship between prior detentions or incarcerations and felony re-arrest rates.

Another measure of the relationship between programming and increased public safety is the re-admission of offenders released from DYRS programs to juvenile or adult facilities. This measure of recidivism was introduced in last year's study and represents a first step in answering the question: How do our juveniles do after they leave the juvenile justice system? Do they continue to phase-out of the criminal justice system, as the DYRS downward trend in long term felony recidivism rates would indicate? Or, do they become the first wave of new admissions to the Department of Correction. This year we explore these questions for juveniles who have been released from the Ferris School for Boys. Remember, these are not typical juveniles, as the Ferris School for Boys recidivism chart shows, these juveniles have, on average, already been detained 2.8 times, admitted to juvenile incarceration 2.1 times and have 8.8 prior arrests.

The 12 month FY01 Ferris School release cohort re-admission rate for a re-admissions to a juvenile and/or an adult detention, Level IV or Level V placement is 68 percent. The total recidivism rate or *re-admission to YRS/DOC SD, LIV, LV* re-admission rate counts an offender recidivating to both a YRS and a DOC setting only once. Thus, the 12 month total re-admission rate of 68 percent is lower than adding the 12 month DYRS (43 percent) and DOC (41 percent) re-admission rates.

As time passes juvenile offenders reach the age of majority and age-out of the juvenile system. The most recent release cohort where all Ferris School offenders had reached the age of majority at the end of this study's follow-up period is the FY01 Ferris School release cohort. At release, members of the FY01 Ferris School cohort ranged from 14.3 years to 22.5 years of age. Obviously, those who were under 18 years of age at release were released from the Ferris School to the community. However six Superior Court cases were transferred to DOC, after their Ferris School stay, and were then released from DOC facilities directly to the community. Thus, analysis of the FY01 Ferris School cohort can answer this critical policy question: How many juvenile offenders move to the adult system? Eighty-eight of the 103 offenders in the FY01 Ferris School cohort moved to the adult system as either pre-trial detainees or sentenced Level IV or V Superior Court offenders, for an overall DOC re-admission rate of 86 percent. The FY01 Ferris School DOC re-admission rate is very similar

to the overall DOC re-admission rate for the FY97 Level V release cohort, which was 87 percent.<sup>7</sup>

Table 5 provides detailed re-admission summaries for the FY01 Ferris School release cohort. Keeping in mind that the FY01 release cohort is the most recent group of releases that lets us see the full impact of serious juvenile offenders moving from the juvenile to the adult system, one can see that by the two year at-risk threshold, 47 percent of the juveniles released from a Ferris School placement episode were re-admitted to a DYRS detention, Level IV or Level V program. After the second year at-risk, the DYRS component of re-admission recidivism changes slightly because all the juveniles in this cohort have reached the age of majority by the third year at-risk. And, as may be expected, as they reach the age of majority the adult re-admission rate continues to increase. Four years after their release, the FY01 Ferris School release cohort reaches a DOC re-admission recidivism rate of 86 percent.

It is very important when examining Table 5 to realize that an offender recidivating to both a YRS and a DOC setting is only counted once for the total recidivism rate or *re-admission to YRS/DOC SD, LIV, LV*. Thus, where the DOC four year re-admission rate for the FY01 cohort is 86 percent, offenders who had been re-admitted to a YRS facility before they reached the age of majority are *not* counted twice.

Table 5. A Comparison of DYRS and DOC Re-admission Rates

FY01 Ferris School release cohort, n=103	Time Since Release					
	6 mo.	12 mo.	18 mo.	2 years	3 years	4 years
Re-admission to YRS/DOC SD, L IV, L V <sup>8</sup>	51%	68%	79%	86%	91%	95%
Re-admission to YRS	39%	43%	46%	47%	48%	48%
Re-admission to SD	32%	36%	38%	39%	39%	39%
Re-admission to L IV	17%	22%	22%	24%	25%	25%
Re-admission to L V	19%	23%	24%	25%	26%	26%
Re-admission to DOC	19%	41%	59%	71%	80%	86%
Re-admission to SD	18%	40%	57%	69%	79%	85%
Re-admission to L IV	3%	6%	12%	19%	26%	27%
Re-admission to L V	11%	23%	38%	50%	61%	70%

<sup>7</sup> Delaware Juvenile Recidivism, SAC, May 2005, p. 10.

<sup>8</sup> SD: secure detention; L IV: quasi-incarceration, e.g., staff secure DYRS program or a DOC L IV held at L V; L V: a locked correctional facility.

## Technical Note: Measuring Recidivism

The FY06 Budget Act, 75 Del. Laws c. 89 § 73, authorizes the Delaware Statistical Analysis Center (SAC) with preparing this report. Juvenile justice policy makers requested in October 1998 that SAC assess DYRS recidivism in terms of felony re-arrests. Thus, in this study recidivism is defined as a new felony arrest in Delaware. Recidivism is measured when a youth is arrested for a felony in Delaware after being released from a DYRS Level III, IV or V placement episode. Recidivism is reported as the percentage of persons released who are re-arrested following release. Arrests for technical violations or traffic offenses not related to driving under the influence or motor vehicle theft, and misdemeanors are not included in the remainder of this study.

Traditionally, recidivism is measured from the date of release from an institution or a residential placement. This measure is valid for systems that take youth from the street, incarcerate them, and then release them back to the street. Delaware's juvenile system is much more likely to place the juvenile offender in a series of secure placements before a youth is released to the community. The methodology in this report captures the contiguous and serial institutionalization of a juvenile as a *secure placement episode*.

Secure placement episodes comprise an uninterrupted period of time when a youth is not in the community and may include multiple releases from secure residential placements. For example, the typical Ferris School for Boys placement episode includes three contiguous placements: (1) admission to the Detention Center, (2) admission to the Ferris School, and (3) transition back to the community through Mowlds Cottage. The at-risk period for the juvenile who had a typical Ferris School for Boys placement episode does not start until the juvenile has been released from Mowlds Cottage and is no longer in secure supervision. In this study, the post-release *at-risk* period starts when a juvenile is released to the community.

## Residential Level V, IV, and III Felony Recidivism Tables

The following pages show felony recidivism rates for residential Level V, IV, and III total and selected programs in the study.

Recidivism rate tables and graphs are shown for programs that released more than 9 juveniles during fiscal years 2003, 2004 or 2005. Only recidivism rate tables are shown for small programs – programs that released less than 10 juveniles in FY03, FY04, and FY05.

Felony recidivism rates are presented in the following pages for four release thresholds: six, 12, 18, and 24 months since release. As the last releases for FY03 occurred during June, 2003, all youth in the FY03 cohort had been released at least 24 months. All youth in the FY04 cohort had been released for at least 18 months. All youth in the FY05 cohort had been released for at least 6 months on July 1, 2005.

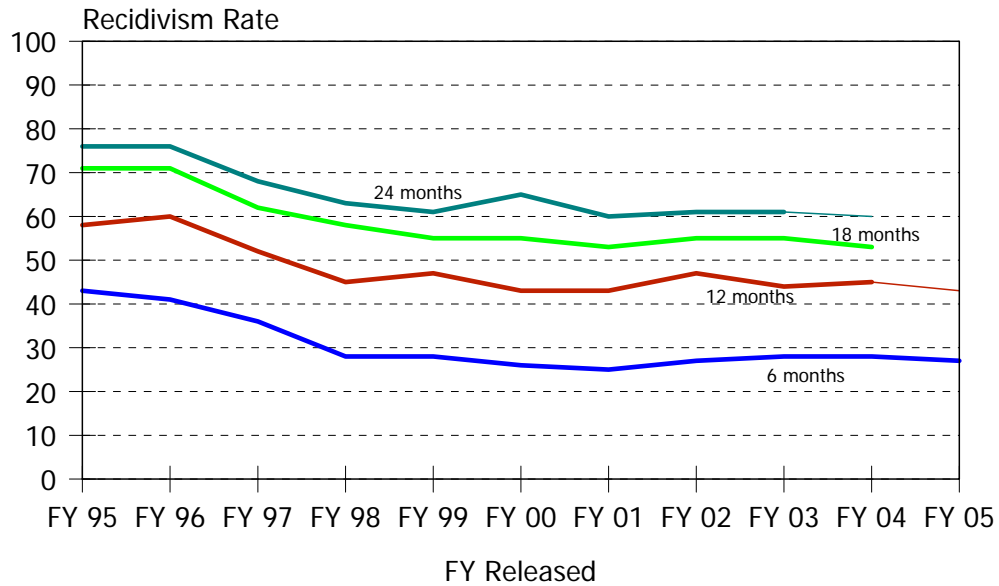
The table below provides a visual explanation of how to read the remaining recidivism tables in this document. The table shows that it has been at least 18 months since all 578 youth in the FY04 Level V cohort were released. The table also shows, through the use of shading, that not all youth in that cohort had been through the 24 month threshold.

Table 6, Level V Felony Recidivism Rates

Time Period	N. Released	Months Since Release			
		6 Months	12 Months	18 Months	24 Months
FY 95	360	43%	58%	71%	76%
FY 96	489	41%	60%	71%	76%
FY 97	447	36%	52%	62%	68%
FY 98	363	28%	45%	58%	63%
FY 99	398	28%	47%	55%	61%
FY 00	482	26%	43%	55%	65%
FY 01	523	25%	43%	53%	60%
FY 02	512	27%	47%	55%	61%
FY 03	496	28%	44%	55%	61%
FY 04	578	28%	45%	53%	60%
FY 05	489	27%	43%	.	.

Intentionally Blank

Display 1, Level V Felony Recidivism Rates



Level V Felony Recidivism Rates

Time Period	N. Released	Months Since Release			
		6 Months	12 Months	18 Months	24 Months
FY 95	360	43%	58%	71%	76%
FY 96	489	41%	60%	71%	76%
FY 97	447	36%	52%	62%	68%
FY 98	363	28%	45%	58%	63%
FY 99	398	28%	47%	55%	61%
FY 00	482	26%	43%	55%	65%
FY 01	523	25%	43%	53%	60%
FY 02	512	27%	47%	55%	61%
FY 03	496	28%	44%	55%	61%
FY 04	578	28%	45%	53%	60%
FY 05	489	27%	43%	53%	60%

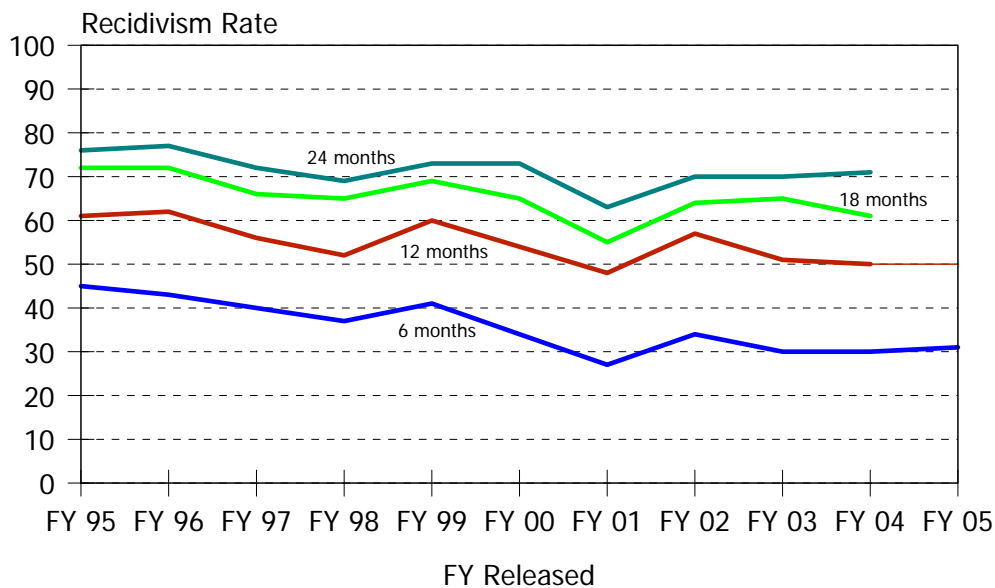
Note: Shading indicates that a complete cohort has not been at-risk for the full threshold time period.

Historical Profile of Youth Released by Fiscal Year

Average	Total	Fiscal Year Released										
		95	96	97	98	99	00	01	02	03	04	05
Level V LOS in months	3.7	3.1	3.0	3.8	3.5	4.5	4.5	3.9	3.9	3.6	3.3	3.4
Placement episode LOS in months	6.8	4.4	5.8	6.8	7.4	9.1	7.5	7.6	7.2	6.4	5.5	5.8
No. of prior detention admissions	2.8	1.7	2.1	2.4	2.5	2.7	3.0	2.9	3.1	3.1	3.4	3.9
No. of prior incarcerations	2.1	1.2	1.5	1.7	1.9	2.2	2.3	2.4	2.3	2.1	2.2	2.4
Number of prior felony arrests	2.7	3.9	3.7	3.5	2.8	2.8	2.5	2.4	2.1	2.2	2.1	2.3
Number of prior arrests	7.7	8.6	8.8	8.6	7.6	7.4	6.9	6.8	7.2	7.4	7.4	8.3

Level V Recidivism Rates

Display 2, Ferris School for Boys Felony Recidivism Rates



Time Period	N. Released	Months Since Release			
		6 Months	12 Months	18 Months	24 Months
FY 95	324	45%	61%	72%	76%
FY 96	413	43%	62%	72%	77%
FY 97	330	40%	56%	66%	72%
FY 98	130	37%	52%	65%	69%
FY 99	98	41%	60%	69%	73%
FY 00	122	34%	54%	65%	73%
FY 01	115	27%	48%	55%	63%
FY 02	124	34%	57%	64%	70%
FY 03	129	30%	51%	65%	70%
FY 04	145	30%	50%	61%	71%
FY 05	138	31%	50%	.	.

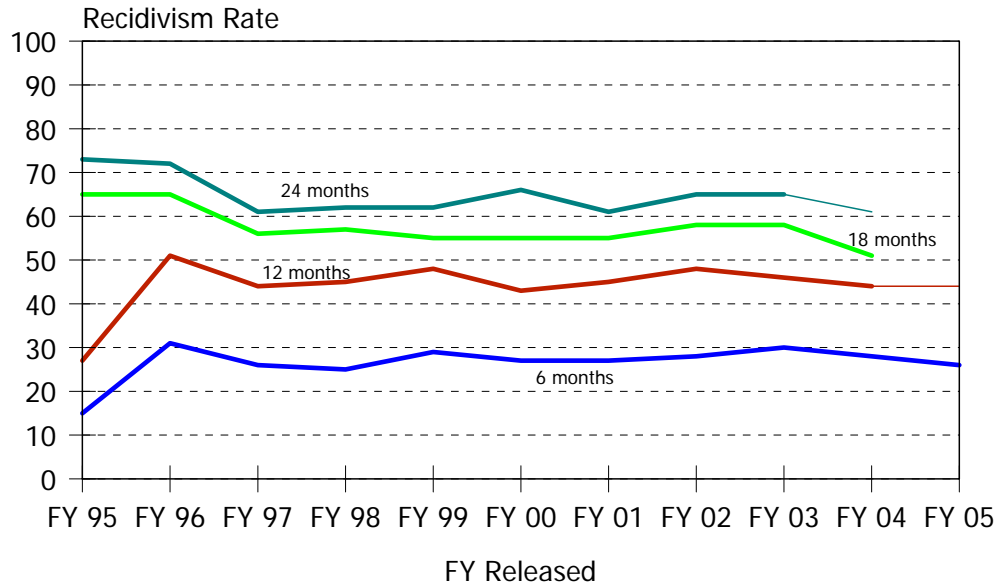
Historical Profile of Youth Released by Fiscal Year

Average	Total	Fiscal Year Released										
		95	96	97	98	99	00	01	02	03	04	05
Ferris School LOS in months	5.7	2.9	2.9	4.2	5.5	10.9	9.7	8.5	8.6	8.4	7.9	7.6
Placement episode LOS in months	8.2	4.6	5.3	6.7	10.1	15.0	11.7	11.9	11.3	10.3	10.1	9.0
No. of prior detention admissions	2.8	1.7	2.1	2.4	3.0	3.0	3.5	3.0	3.6	3.7	4.2	4.8
No. of prior incarcerations	2.1	1.3	1.6	1.9	2.5	2.4	2.8	3.0	2.5	2.3	2.9	2.9
Number of prior felony arrests	3.7	4.0	3.9	4.0	4.0	3.8	3.3	3.0	3.2	3.2	3.2	3.2
Number of prior arrests	8.8	8.8	9.1	9.5	9.2	9.0	8.2	7.2	8.5	8.4	8.8	9.3

The Ferris School for Boys, a DYRS facility, provides programs and services to create a total learning environment for boys. The Ferris School switched to a therapeutic community in May of 1997.



Display 3, New Castle County Detention Center Adjudicated Felony Recidivism Rates



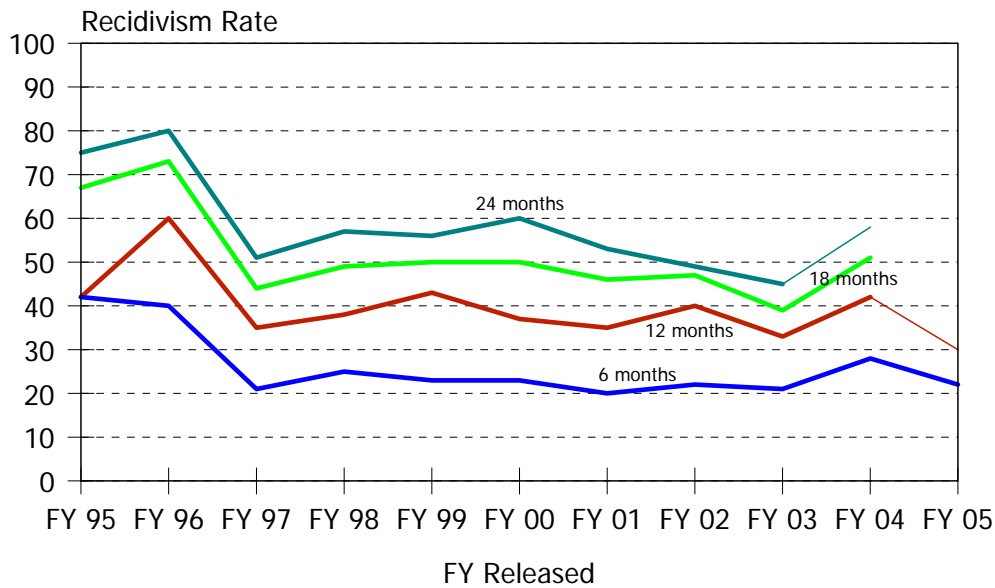
Time Period	N. Released	Months Since Release			
		6 Months	12 Months	18 Months	24 Months
FY 95	26	15%	27%	65%	73%
FY 96	68	31%	51%	65%	72%
FY 97	88	26%	44%	56%	61%
FY 98	159	25%	45%	57%	62%
FY 99	224	29%	48%	55%	62%
FY 00	297	27%	43%	55%	66%
FY 01	313	27%	45%	55%	61%
FY 02	272	28%	48%	58%	65%
FY 03	269	30%	46%	58%	65%
FY 04	322	28%	44%	51%	61%
FY 05	266	26%	44%	.	.

Historical Profile of Youth Released by Fiscal Year

Average	Total	Fiscal Year Released										
		95	96	97	98	99	00	01	02	03	04	05
NCCDC LOS in months	1.7	2.7	2.6	2.3	2.0	2.0	1.8	1.8	1.7	1.5	1.4	1.5
Placement episode LOS in months	6.2	4.9	10.2	8.9	7.2	7.9	6.7	6.8	5.8	5.5	4.2	4.7
No. of prior detention admissions	3.4	2.1	2.6	2.5	2.7	3.0	3.3	3.3	3.3	3.6	3.9	4.2
No. of prior incarcerations	2.3	0.7	1.2	1.2	1.9	2.2	2.5	2.5	2.4	2.4	2.4	2.6
Number of prior felony arrests	2.3	3.2	2.8	2.6	2.6	2.9	2.5	2.3	1.8	2.1	2.0	2.1
Number of prior arrests	7.2	8.0	7.8	6.1	6.4	7.2	6.6	6.7	7.0	7.4	7.4	8.4

The New Castle County Detention Center, a DYRS facility, provides health, professional care, professional counseling and educational programming for juveniles. Information presented in this document for this facility relates solely to the adjudicated juveniles held there.

Display 4, Stevenson House Detention Center Adjudicated Felony Recidivism Rates



Time Period	N. Released	Months Since Release			
		6 Months	12 Months	18 Months	24 Months
FY 95	12	42%	42%	67%	75%
FY 96	15	40%	60%	73%	80%
FY 97	43	21%	35%	44%	51%
FY 98	95	25%	38%	49%	57%
FY 99	115	23%	43%	50%	56%
FY 00	144	23%	37%	50%	60%
FY 01	181	20%	35%	46%	53%
FY 02	181	22%	40%	47%	49%
FY 03	159	21%	33%	39%	45%
FY 04	205	28%	42%	51%	58%
FY 05	116	22%	30%	.	.

Historical Profile of Youth Released by Fiscal Year

Average	Total	Fiscal Year Released										
		95	96	97	98	99	00	01	02	03	04	05
Stevenson House LOS in months	1.6	0.2	0.3	1.0	1.3	1.5	1.8	1.6	2.1	1.6	1.5	1.9
Placement episode LOS in months	7.0	0.2	0.3	4.2	4.7	8.3	8.2	8.6	9.1	6.3	6.1	5.6
No. of prior detention admissions	2.0	0.9	0.7	1.4	1.5	1.7	1.8	2.0	2.3	2.0	2.4	2.5
No. of prior incarcerations	2.0	0.3	0.1	0.8	1.4	2.1	1.9	2.4	2.4	1.9	2.1	1.8
Number of prior felony arrests	2.0	1.8	0.9	1.6	1.8	2.2	2.1	2.3	2.0	1.9	1.9	1.7
Number of prior arrests	6.9	6.5	5.1	6.7	7.4	7.0	6.7	6.7	6.9	6.9	7.1	7.4

The Stevenson House Detention Center, a DYRS facility, provides health, professional care, professional counseling and educational programming for juveniles. Information presented in this document for this facility relates solely to the adjudicated juveniles held there.

Display 5, Level V Small Program Felony Recidivism RatesC.C.A., Shelby Training School Felony Recidivism Rates

Time Period	N. Released	Months Since Release			
		6 Months	12 Months	18 Months	24 Months
FY 95	10	50%	60%	90%	100%
FY 96	5	40%	40%	60%	80%
FY 97	8	50%	88%	88%	88%
FY 98	12	50%	75%	92%	92%
FY 99	11	55%	82%	82%	91%
FY 00	14	62%	85%	85%	85%
FY 01	25	56%	72%	80%	88%
FY 02	16	50%	88%	100%	100%
FY 03	2	100%	100%	100%	100%

Shelby Training School provides pre-vocational, on-site educational, and zero tolerance behavioral programming for males 12 to 18 years of age.<sup>9</sup>

C.C.A., South West Indiana Youth Village,  
Drug and Alcohol Felony Recidivism Rates

Time Period	N. Released	Months Since Release			
		6 Months	12 Months	18 Months	24 Months
FY 99	3	100%	100%	100%	100%
FY 01	4	50%	50%	50%	75%
FY 02	1	0%	0%	0%	100%
FY 03	1	100%	100%	100%	100%
FY 04	3	0%	0%	0%	.

South West Indiana Youth Village provides pre-vocational, educational, strict behavioral modification, and specialized substance abuse programming for offenders 12 to 18 years of age.

C.C.A., South West Indiana Youth Village, Secure Felony Recidivism Rates

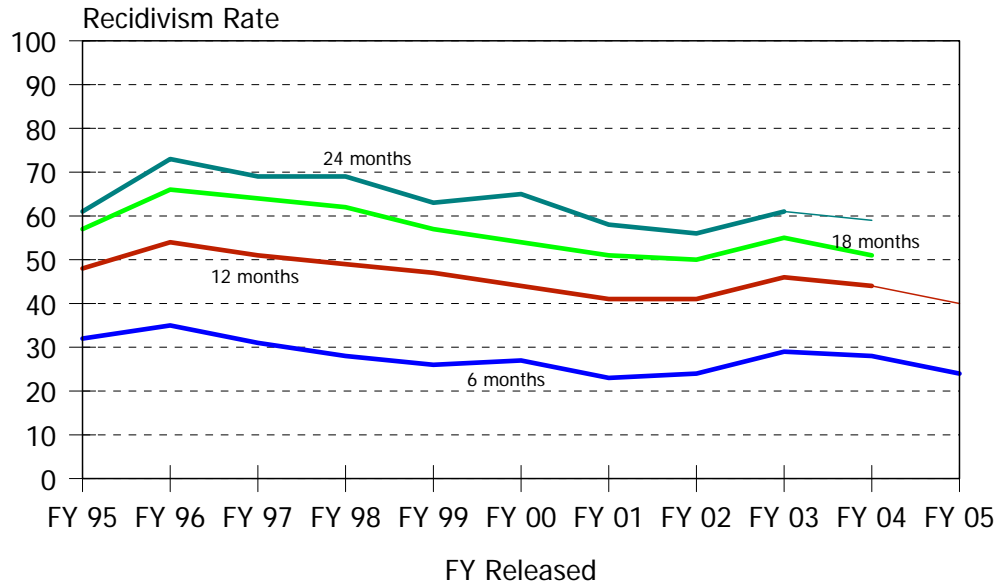
Time Period	N. Released	Months Since Release			
		6 Months	12 Months	18 Months	24 Months
FY 00	4	50%	100%	100%	100%
FY 01	4	50%	50%	50%	50%
FY 02	2	50%	50%	50%	50%
FY 03	2	100%	100%	100%	100%
FY 05	4	0%	0%	.	.

South West Indiana Youth Village provides secure care and substance abuse treatment program for offenders 12 to 18 years of age.

<sup>9</sup> The program descriptions contained in this document were provided by DYRS.

Intentionally Blank

Display 6, Level IV Felony Recidivism Rates



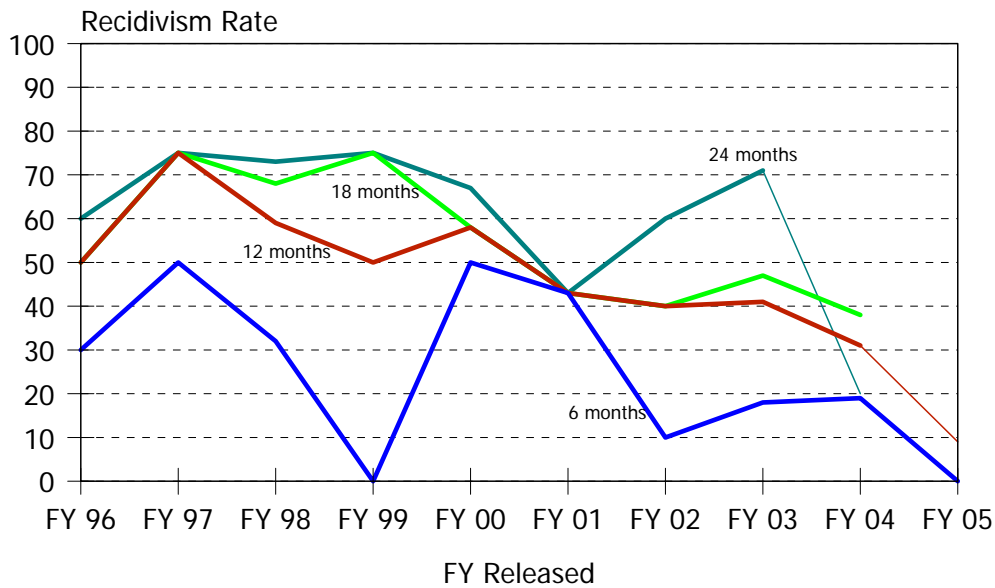
Level IV Felony Recidivism Rates

Time Period	N. Released	Months Since Release			
		6 Months	12 Months	18 Months	24 Months
FY 95	155	32%	48%	57%	61%
FY 96	268	35%	54%	66%	73%
FY 97	299	31%	51%	64%	69%
FY 98	495	28%	49%	62%	69%
FY 99	534	26%	47%	57%	63%
FY 00	528	27%	44%	54%	65%
FY 01	519	23%	41%	51%	58%
FY 02	635	24%	41%	50%	56%
FY 03	499	29%	46%	55%	61%
FY 04	468	28%	44%	51%	59%
FY 05	441	24%	40%	.	.

Historical Profile of Youth Released by Fiscal Year

Average	Total	Fiscal Year Released										
		95	96	97	98	99	00	01	02	03	04	05
Level IV LOS in months	4.2	6.8	7.0	6.7	4.5	4.4	3.8	4.2	3.3	3.2	3.1	3.3
Placement episode LOS in months	5.7	8.6	9.4	8.7	5.9	6.0	5.2	6.0	4.6	4.5	4.4	4.4
No. of prior detention admissions	2.8	1.9	2.1	2.3	2.5	2.8	2.8	2.6	2.8	2.9	3.3	3.5
No. of prior incarcerations	1.9	1.2	1.4	1.5	1.5	2.1	2.1	2.1	1.9	1.9	1.9	2.0
Number of prior felony arrests	2.2	3.4	3.4	2.8	2.4	2.4	2.1	2.0	1.6	1.9	1.8	1.8
Number of prior arrests	6.8	7.9	8.1	7.1	6.6	6.8	6.2	6.2	6.4	6.8	7.1	7.2

Display 7, Chamberlain Academy, High Impact, Felony Recidivism Rates



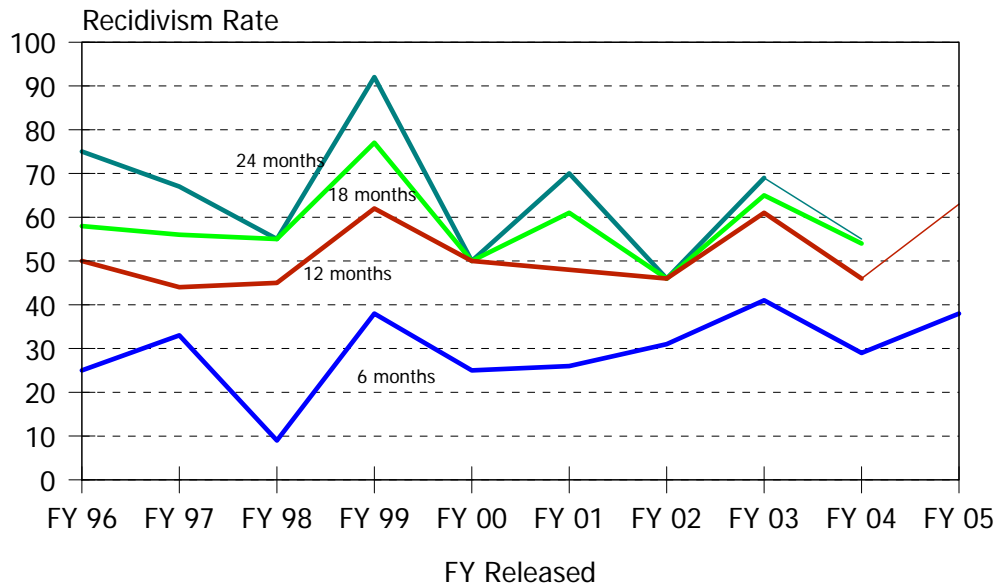
Time Period	N. Released	Months Since Release			
		6 Months	12 Months	18 Months	24 Months
FY 96	10	30%	50%	50%	60%
FY 97	8	50%	75%	75%	75%
FY 98	22	32%	59%	68%	73%
FY 99	4	0%	50%	75%	75%
FY 00	12	50%	58%	58%	67%
FY 01	7	43%	43%	43%	43%
FY 02	10	10%	40%	40%	60%
FY 03	17	18%	41%	47%	71%
FY 04	16	19%	31%	38%	20%
FY 05	16	0%	9%	.	.

Historical Profile of Youth Released by Fiscal Year

Average	Total	Fiscal Year Released									
		96	97	98	99	00	01	02	03	04	05
Chamberlain Academy LOS in months	4.7	4.3	6.3	6.1	6.4	5.1	4.1	4.7	4.1	4.0	3.3
Placement episode LOS in months	7.4	7.7	11.1	7.9	11.9	7.7	6.0	6.6	5.9	6.8	6.1
No. of prior detention admissions	2.6	1.4	2.0	2.8	2.3	2.0	2.4	2.4	3.2	3.1	3.3
No. of prior incarceration admissions	1.9	0.8	3.0	1.3	1.5	0.8	2.1	1.0	2.4	2.8	2.7
Number of prior felony arrests	2.2	2.6	3.3	2.3	2.3	2.0	2.3	2.1	2.1	2.4	1.5
Number of prior arrests	7.4	8.5	11.8	6.1	5.3	5.7	7.4	6.7	8.9	7.2	7.3

Chamberlain Academy’s High Impact program provides short-term coed group programming for juveniles with minimal Court involvement and few other post-adjudication placements.

Display 8, Clarinda Academy Felony Recidivism Rates



Time Period	N. Released	Months Since Release			
		6 Months	12 Months	18 Months	24 Months
FY 96	12	25%	50%	58%	75%
FY 97	9	33%	44%	56%	67%
FY 98	11	9%	45%	55%	55%
FY 99	13	38%	62%	77%	92%
FY 00	4	25%	50%	50%	50%
FY 01	23	26%	48%	61%	70%
FY 02	13	31%	46%	46%	46%
FY 03	49	41%	61%	65%	69%
FY 04	28	29%	46%	54%	55%
FY 05	29	38%	63%	.	.

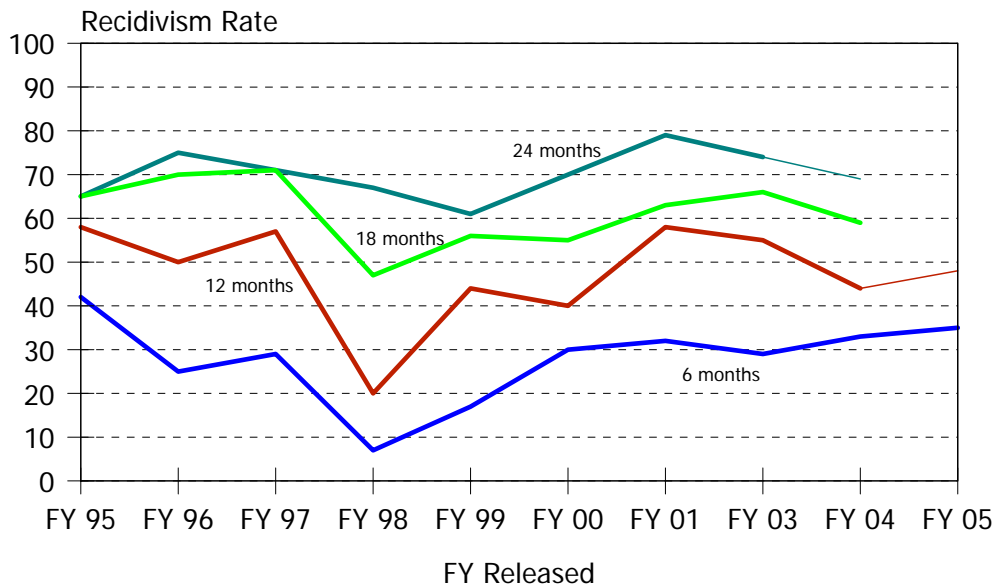
Historical Profile of Youth Released by Fiscal Year

Average	Total	Fiscal Year Released									
		96	97	98	99	00	01	02	03	04	05
Clarinda Academy LOS in months	7.2	10.4	10.6	10.4	10.6	11.3	10.3	8.5	5.1	5.1	4.2
Placement episode LOS in months	9.7	12.8	14.0	12.2	13.7	13.8	12.5	15.9	7.0	7.1	5.9
No. of prior detention admissions	3.4	2.8	2.3	2.2	2.2	1.3	2.6	3.2	4.2	3.9	4.3
No. of prior incarceration admissions	2.4	1.3	3.0	1.9	2.1	0.8	2.4	2.5	2.4	3.2	2.7
Number of prior felony arrests	2.6	4.0	3.3	3.3	3.5	3.0	2.3	2.6	2.4	2.4	2.3
Number of prior arrests	8.0	9.4	7.4	8.1	6.6	5.3	6.7	7.5	8.2	8.3	9.2

Clarinda Academy provides normative culture, chemical abuse counseling, victim awareness and educational programming for males between the ages of 13 and 18.

Level IV Recidivism Rates

Display 9, Glen Mills Schools Felony Recidivism Rates



Time Period	N. Released	Months Since Release			
		6 Months	12 Months	18 Months	24 Months
FY 95	26	42%	58%	65%	65%
FY 96	20	25%	50%	70%	75%
FY 97	14	29%	57%	71%	71%
FY 98	15	7%	20%	47%	67%
FY 99	18	17%	44%	56%	61%
FY 00	20	30%	40%	55%	70%
FY 01	19	32%	58%	63%	79%
FY 03	38	29%	55%	66%	74%
FY 04	39	33%	44%	59%	69%
FY 05	46	35%	48%	.	.

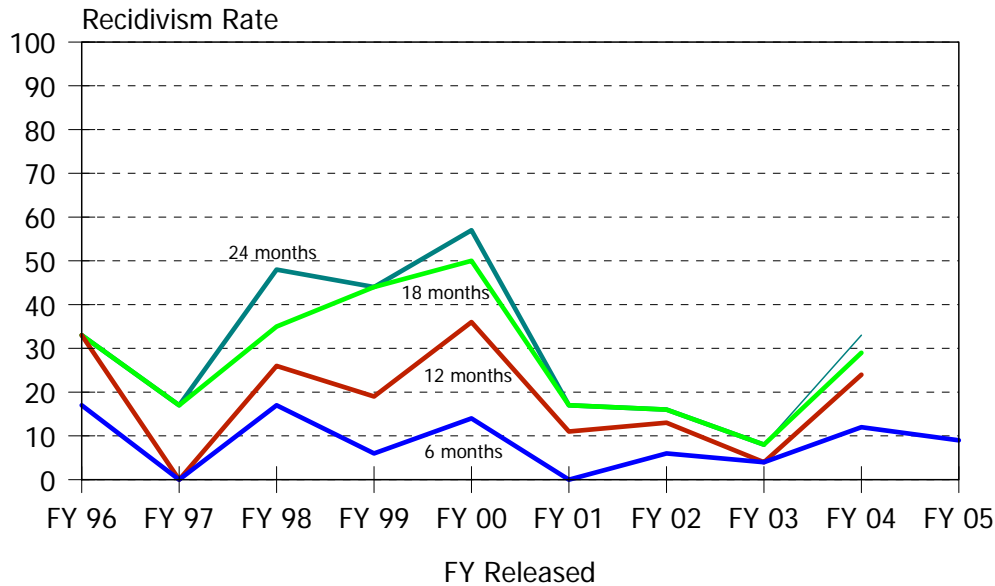
Historical Profile of Youth Released by Fiscal Year

Average	Total	Fiscal Year Released									
		95	96	97	98	99	00	01	03	04	05
Glen Mills Schools LOS in months	8.6	12.0	11.1	12.3	12.4	11.8	11.7	10.8	5.6	5.0	5.1
Placement episode LOS in months	10.3	13.2	13.2	14.4	14.6	13.8	13.1	13.6	7.5	6.3	6.6
No. of prior detention admissions	2.9	1.7	1.9	2.2	2.3	2.4	3.6	2.9	3.1	3.3	4.1
No. of prior incarceration admissions	2.0	1.1	1.3	1.2	1.0	1.9	2.0	2.1	2.4	2.1	2.8
Number of prior felony arrests	3.3	3.8	4.1	3.3	2.9	3.9	3.9	3.9	2.6	2.7	3.2
Number of prior arrests	7.6	8.1	8.5	7.7	6.7	6.9	7.5	7.6	7.1	6.9	8.4

Glen Mills Schools provide normative culture, vocational, athletic and educational programming for males between the ages of 14 and 18. No Delaware juvenile offenders were sent to Glen Mills Schools during FY02.



Display 10, Grace Cottage Felony Recidivism Rates



Time Period	N. Released	Months Since Release			
		6 Months	12 Months	18 Months	24 Months
FY 96	6	17%	33%	33%	33%
FY 97	12	0%	0%	17%	17%
FY 98	23	17%	26%	35%	48%
FY 99	16	6%	19%	44%	44%
FY 00	14	14%	36%	50%	57%
FY 01	18	0%	11%	17%	17%
FY 02	32	6%	13%	16%	16%
FY 03	24	4%	4%	8%	8%
FY 04	34	12%	24%	29%	33%
FY 05	22	9%	.	.	.

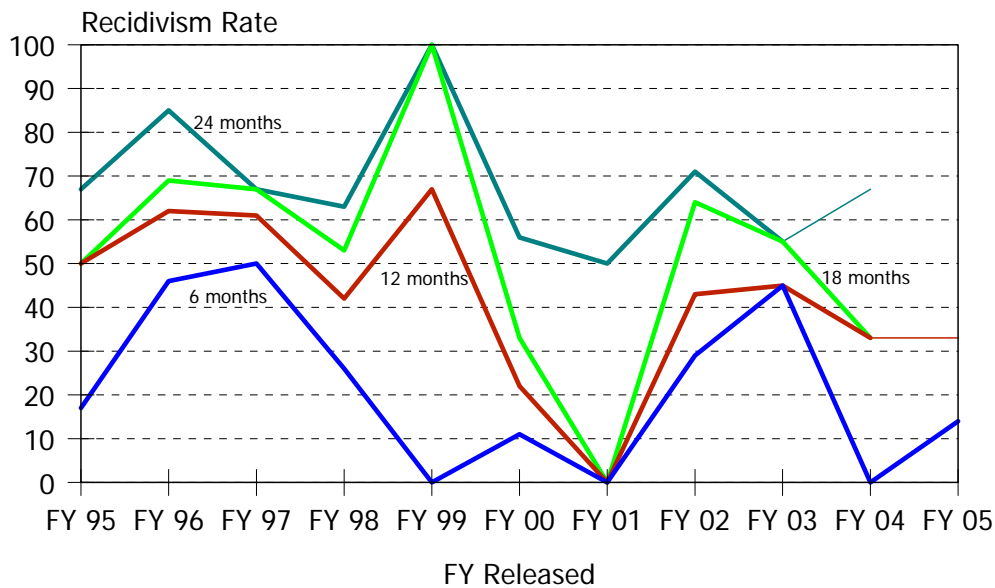
Historical Profile of Youth Released by Fiscal Year

Average	Total	Fiscal Year Released										
		96	97	98	99	00	01	02	03	04	05	
Grace Cottage LOS in months	3.9	2.7	9.7	6.6	4.6	4.9	5.8	3.0	1.9	2.0	1.5	
Placement episode LOS in months	6.7	6.2	11.6	9.0	7.7	8.0	8.0	8.3	5.5	3.2	3.6	
No. of prior detention admissions	3.5	3.5	4.4	3.4	5.1	3.4	2.7	3.3	2.9	3.1	4.3	
No. of prior incarceration admissions	1.8	1.2	1.0	1.5	2.7	2.1	1.9	2.0	2.2	1.5	1.8	
Number of prior felony arrests	1.3	2.0	1.6	1.6	1.3	1.4	1.4	1.2	1.2	1.2	1.0	
Number of prior arrests	6.8	7.2	6.6	7.2	7.8	6.3	5.9	6.2	6.8	6.9	7.2	

Grace Cottage provided behavior management and educational programming for females between the ages of 13 and 18. Grace Cottage did not operate from December 24, 2003, through January 18, 2005.

Level IV Recidivism Rates

Display 11, Mountain Manor Felony Recidivism Rates



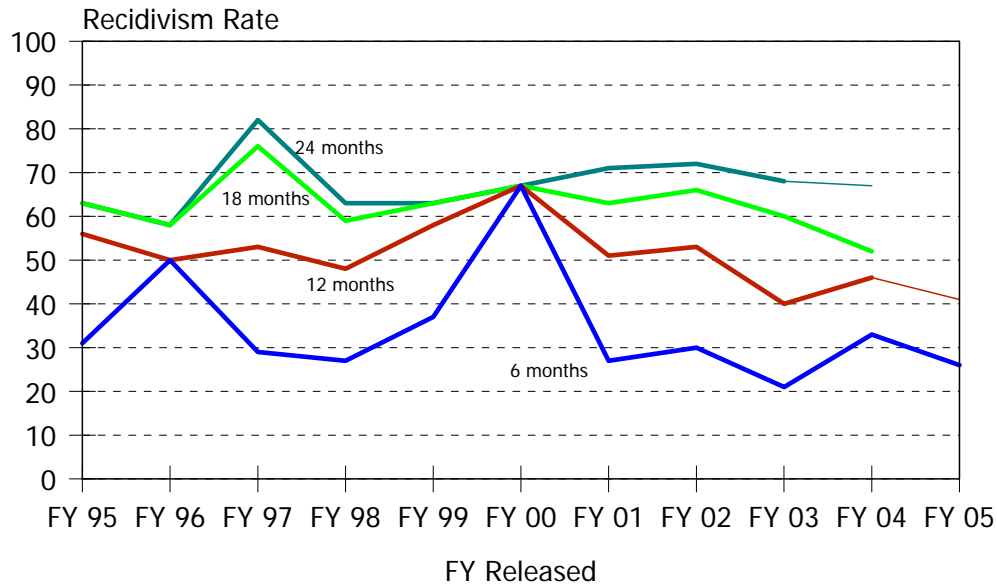
Time Period	N. Released	Months Since Release			
		6 Months	12 Months	18 Months	24 Months
FY 95	6	17%	50%	50%	67%
FY 96	13	46%	62%	69%	85%
FY 97	18	50%	61%	67%	67%
FY 98	19	26%	42%	53%	63%
FY 99	3	0%	67%	100%	100%
FY 00	9	11%	22%	33%	56%
FY 01	2	0%	0%	0%	50%
FY 02	14	29%	43%	64%	71%
FY 03	11	45%	45%	55%	55%
FY 04	6	0%	33%	33%	67%
FY 05	7	14%	33%	.	.

Historical Profile of Youth Released by Fiscal Year

Average	Total	Fiscal Year Released											
		95	96	97	98	99	00	01	02	03	04	05	
Mountain Manor LOS in months	1.4	1.3	1.3	1.4	1.2	1.2	1.4	2.0	1.6	1.1	1.4	2.0	
Placement episode LOS in months	3.4	2.3	3.8	3.4	2.9	9.5	4.0	2.0	3.2	2.3	4.2	3.7	
No. of prior detention admissions	2.6	2.5	2.3	2.4	2.2	3.0	3.3	2.5	2.8	2.7	1.8	4.3	
No. of prior incarcerations	1.4	0.5	1.1	1.2	1.0	2.0	1.2	1.0	1.4	2.0	1.3	2.7	
Number of prior felony arrests	2.1	3.0	2.8	2.2	1.5	5.3	1.8	2.0	1.6	1.9	1.7	1.4	
Number of prior arrests	6.8	9.7	6.6	6.6	6.0	9.7	6.7	7.0	6.1	5.7	7.8	7.9	

Mountain Manor Treatment Center, Inc., provides drug and alcohol and family therapy programming for juveniles between the ages of 12 and 19.

Display 12, Mowlds Cottage Felony Recidivism Rates



Time Period	N. Released	Months Since Release			
		6 Months	12 Months	18 Months	24 Months
FY 95	16	31%	56%	63%	63%
FY 96	12	50%	50%	58%	58%
FY 97	17	29%	53%	76%	82%
FY 98	56	27%	48%	59%	63%
FY 99	19	37%	58%	63%	63%
FY 00	3	67%	67%	67%	67%
FY 01	41	27%	51%	63%	71%
FY 02	48	30%	53%	66%	72%
FY 03	42	21%	40%	60%	68%
FY 04	52	33%	46%	52%	67%
FY 05	81	26%	41%	.	.

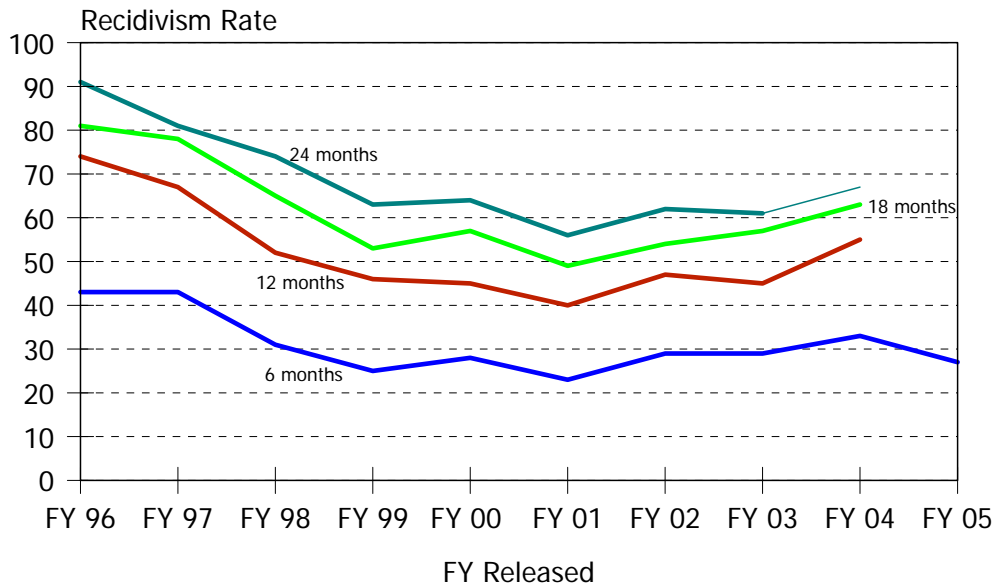
Historical Profile of Youth Released by Fiscal Year

Average	Fiscal Year Released											
	Total	95	96	97	98	99	00	01	02	03	04	05
Mowlds Cottage LOS in months	0.6	0.2	0.4	0.8	0.7	1.2	1.2	0.7	0.5	0.6	0.3	0.4
Placement episode LOS in months	2.2	0.9	3.2	0.9	2.1	6.0	5.2	3.0	1.0	1.5	1.4	1.6
No. of prior detention admissions	2.7	1.4	1.5	1.4	1.8	2.7	5.0	3.3	2.9	3.0	3.6	3.7
No. of prior incarcerations	2.2	2.0	2.2	0.5	1.6	2.4	5.7	3.0	1.9	2.1	2.1	2.5
Number of prior felony arrests	2.1	3.6	3.2	2.5	2.2	2.5	3.7	2.2	1.5	1.4	1.5	1.8
Number of prior arrests	6.8	8.3	9.0	6.2	7.0	6.1	10.7	6.6	5.8	6.0	7.2	7.3

While Mowlds Cottage traditionally provides programming for males transitioning from the Ferris School for Boys, since FY02 only youth who were serving administrative holds or were returned from other programs were admitted directly to Mowlds Cottage. Ferris School flow-downs are not included here. Ferris School flow-downs are shown in the Ferris School analysis on page 18.

Level IV Recidivism Rates

Display 13, Snowden Cottage Felony Recidivism Rates



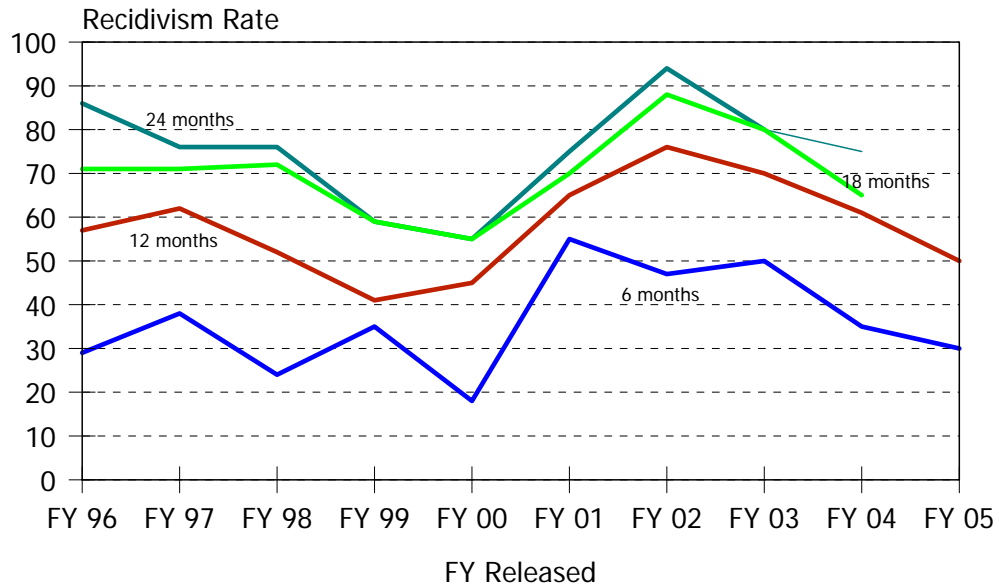
Time Period	N. Released	Months Since Release			
		6 Months	12 Months	18 Months	24 Months
FY 96	53	43%	74%	81%	91%
FY 97	72	43%	67%	78%	81%
FY 98	112	31%	52%	65%	74%
FY 99	150	25%	46%	53%	63%
FY 00	143	28%	45%	57%	64%
FY 01	131	23%	40%	49%	56%
FY 02	199	29%	47%	54%	62%
FY 03	138	29%	45%	57%	61%
FY 04	74	33%	55%	63%	67%
FY 05	37	27%	.	.	.

Historical Profile of Youth Released by Fiscal Year

Average	Total	Fiscal Year Released										
		96	97	98	99	00	01	02	03	04	05	
Snowden Cottage LOS in months	1.3	1.0	2.3	1.5	1.3	1.4	1.5	1.0	1.0	1.2	1.3	
Placement episode LOS in months	2.5	2.1	3.5	3.1	2.8	2.9	2.8	1.8	1.6	2.5	3.0	
No. of prior detention admissions	2.6	1.9	2.2	2.5	2.6	2.7	2.5	2.5	2.7	3.0	2.7	
No. of prior incarceration admissions	1.8	2.4	1.6	1.5	1.7	1.9	1.8	1.7	2.0	1.7	1.4	
Number of prior felony arrests	2.1	3.7	2.8	2.5	2.4	1.9	1.9	1.6	1.7	1.7	1.5	
Number of prior arrests	6.6	8.4	6.6	6.8	7.0	5.9	5.7	6.4	6.7	7.1	6.6	

Snowden Cottage provides a short-term residential programming for males with educational services on-site. Snowden Cottage did not operate from December 24, 2003, through January 18, 2005.

Display 14, Springfield Academy Felony Recidivism Rates



Time Period	N. Released	Months Since Release			
		6 Months	12 Months	18 Months	24 Months
FY 96	7	29%	57%	71%	86%
FY 97	34	38%	62%	71%	76%
FY 98	29	24%	52%	72%	76%
FY 99	17	35%	41%	59%	59%
FY 00	11	18%	45%	55%	55%
FY 01	20	55%	65%	70%	75%
FY 02	17	47%	76%	88%	94%
FY 03	10	50%	70%	80%	80%
FY 04	23	35%	61%	65%	75%
FY 05	20	30%	50%	.	.

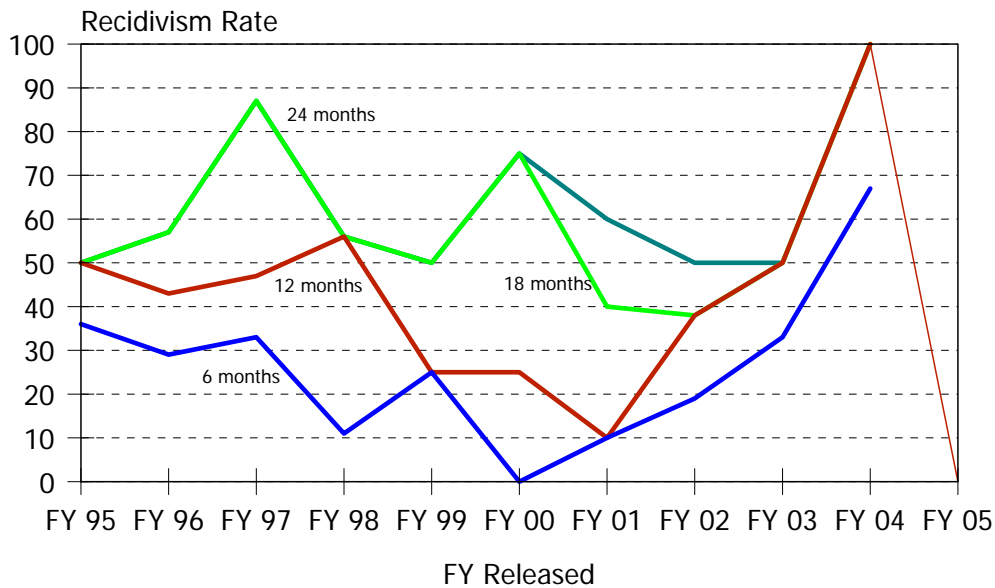
Historical Profile of Youth Released by Fiscal Year

Average	Total	Fiscal Year Released										
		96	97	98	99	00	01	02	03	04	05	
Springfield Academy LOS in months	7.8	9.8	9.8	9.0	9.1	8.3	8.4	7.9	5.1	4.5	5.2	
Placement episode LOS in months	10.2	13.0	12.4	11.0	11.6	10.0	11.1	10.7	7.4	7.2	6.8	
No. of prior detention admissions	3.1	1.6	2.6	2.1	2.4	2.5	2.2	4.5	4.0	4.9	3.7	
No. of prior incarceration admissions	2.0	0.9	1.7	1.7	1.6	1.8	1.7	2.9	1.9	2.7	2.5	
Number of prior felony arrests	2.8	2.9	3.4	2.7	2.8	2.8	2.9	3.2	2.8	2.6	1.9	
Number of prior arrests	8.0	5.3	8.6	7.8	7.2	7.4	6.7	9.0	9.4	8.2	8.3	

Springfield Academy provides chemical abuse counseling, victim awareness, educational groups and normative culture programming for males between the ages of 11 and 18.

Level IV Recidivism Rates

Display 15, Today Inc., General, Felony Recidivism Rates



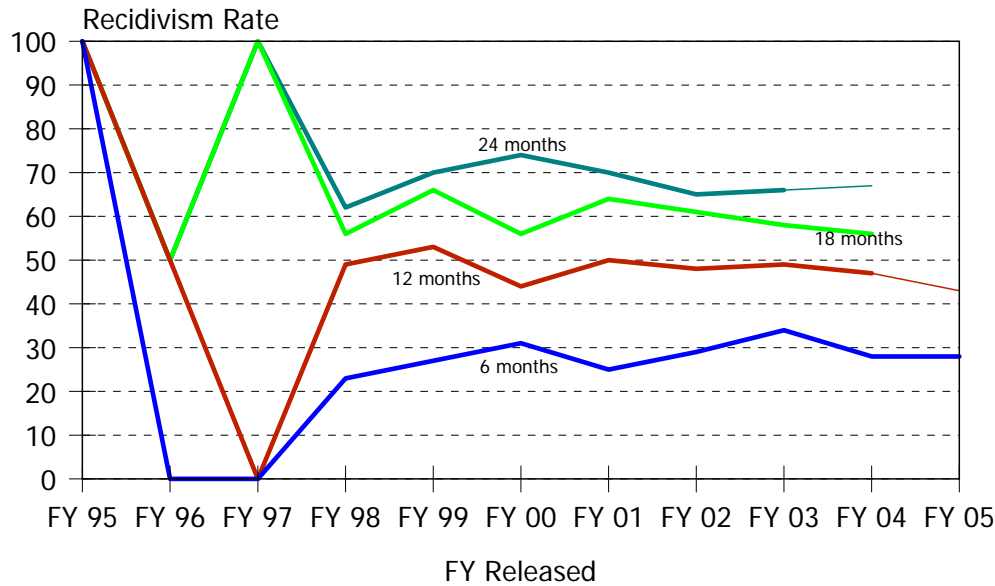
Time Period	N. Released	Months Since Release			
		6 Months	12 Months	18 Months	24 Months
FY 95	14	36%	50%	50%	50%
FY 96	14	29%	43%	57%	57%
FY 97	15	33%	47%	87%	87%
FY 98	9	11%	56%	56%	56%
FY 99	4	25%	25%	50%	50%
FY 00	4	0%	25%	75%	75%
FY 01	10	10%	10%	40%	60%
FY 02	16	19%	38%	38%	50%
FY 03	12	33%	50%	50%	50%
FY 04	3	67%	100%	100%	100%
FY 05	3	33%	0%	.	.

Historical Profile of Youth Released by Fiscal Year

Average	Total	Fiscal Year Released											
		95	96	97	98	99	00	01	02	03	04	05	
Today, Inc., LOS in months	2.0	2.1	2.3	1.9	1.7	2.1	2.5	2.3	2.1	1.6	2.3	1.5	
Placement episode LOS in months	4.0	5.4	3.9	3.9	2.3	3.9	6.1	4.2	4.3	3.1	3.2	3.7	
No. of prior detention admissions	2.0	1.9	2.2	1.7	2.2	2.0	2.8	1.9	1.6	2.0	2.7	4.0	
No. of prior incarcerations	1.4	2.4	0.9	1.0	0.4	2.3	1.8	1.4	1.4	1.2	2.0	3.7	
Number of prior felony arrests	2.2	3.4	3.5	2.0	1.6	2.0	1.5	2.2	1.4	1.5	2.0	1.7	
Number of prior arrests	6.8	8.3	7.8	6.0	7.4	4.8	6.0	6.9	6.4	5.2	9.7	7.0	

Today, Inc., provides long-term (60 to 90 days) alcohol and substance abuse treatment for juveniles between the ages of 13 and 19 with histories of addictive (cocaine, heroin, and or poly-substance) abuser.

Display 16, VisionQuest, Boot Camp, Felony Recidivism Rates



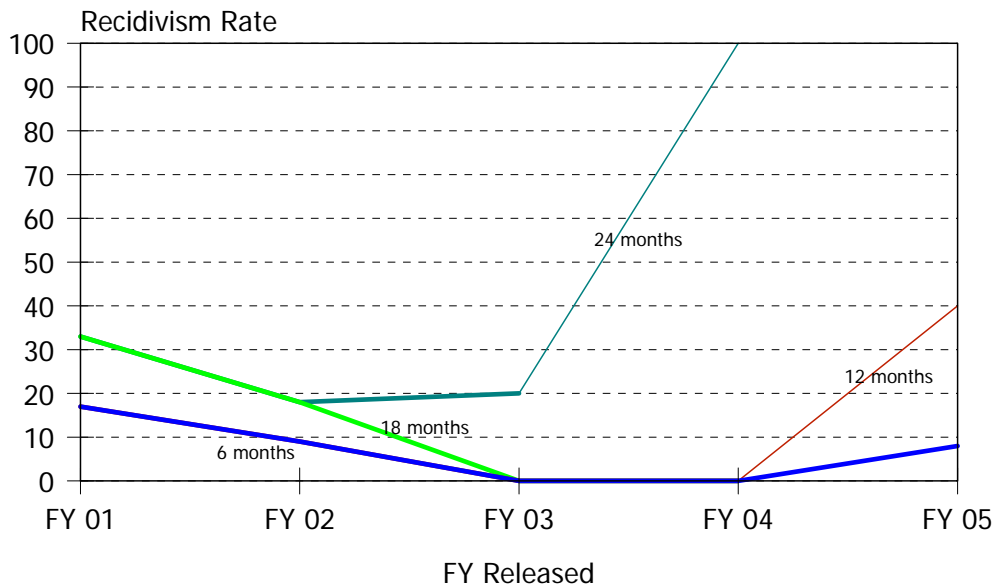
Time Period	N. Released	Months Since Release			
		6 Months	12 Months	18 Months	24 Months
FY 95	1	100%	100%	100%	100%
FY 96	2	0%	50%	50%	50%
FY 97	1	0%	0%	100%	100%
FY 98	39	23%	49%	56%	62%
FY 99	80	27%	53%	66%	70%
FY 00	93	31%	44%	56%	74%
FY 01	100	25%	50%	64%	70%
FY 02	102	29%	48%	61%	65%
FY 03	109	34%	49%	58%	66%
FY 04	135	28%	47%	56%	67%
FY 05	130	28%	43%	.	.

Historical Profile of Youth Released by Fiscal Year

Average	Total	Fiscal Year Released											
		95	96	97	98	99	00	01	02	03	04	05	
VisionQuest Boot Camp LOS	2.0	3.9	3.4	3.0	2.9	3.0	2.4	1.8	1.7	1.4	1.6	1.8	
Placement episode LOS in months	3.5	9.0	3.4	9.0	4.9	5.4	4.1	3.1	2.9	2.2	2.9	3.1	
No. of prior detention admissions	2.8	2.0	1.5	4.0	2.9	2.8	2.8	2.8	2.6	3.1	3.0	2.8	
No. of prior incarcerations	1.8	1.0	0.0	5.0	1.9	2.5	2.1	1.8	1.5	1.6	1.5	1.8	
Number of prior felony arrests	1.9	2.0	2.0	0.0	2.0	2.3	2.2	1.8	1.7	1.6	1.6	1.8	
Number of prior arrests	6.5	8.0	5.5	7.0	6.1	6.6	6.0	6.4	6.5	7.0	6.8	6.4	

VisionQuest Boot Camp provides a focus on discipline in addition to education, counseling and community services in highly structured 30 and 90 day programs for juveniles between the ages of 13 and 18.

Display 17, VisionQuest, Madalyn Program, Felony Recidivism Rates



Time Period	N. Released	Months Since Release			
		6 Months	12 Months	18 Months	24 Months
FY 01	12	17%	17%	33%	33%
FY 02	11	9%	9%	18%	18%
FY 03	5	0%	0%	0%	20%
FY 04	3	0%	0%	0%	100%
FY 05	12	8%	40%	.	.

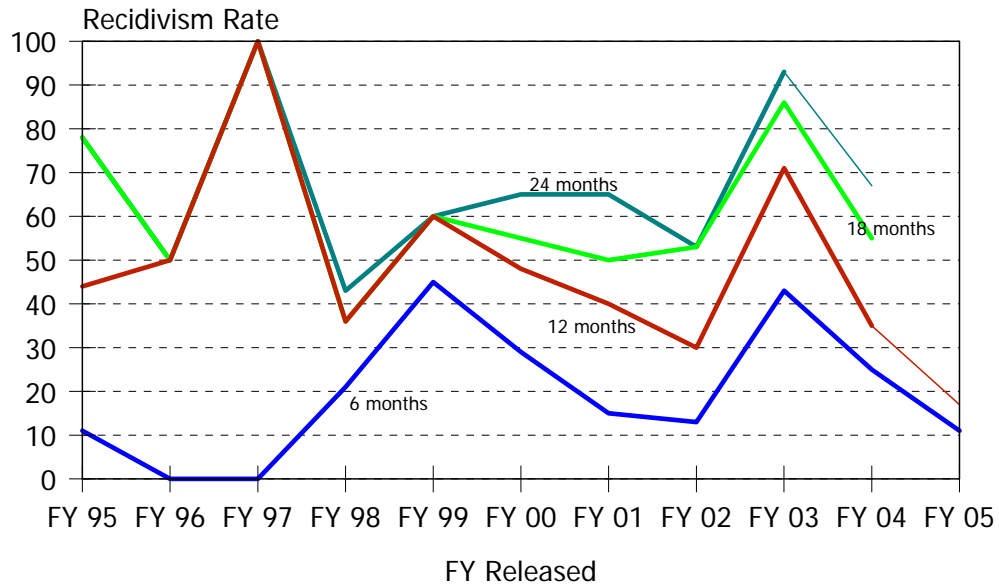
Historical Profile of Youth Released by Fiscal Year

Average	Total	Fiscal Year Released				
		01	02	03	04	05
VisionQuest Madalyn LOS in months	3.3	3.3	4.0	3.1	2.0	3.1
Placement episode LOS in months	5.8	5.7	6.4	6.0	3.3	6.0
Number of prior detention admissions	3.5	3.3	4.1	2.2	2.0	4.2
Number of prior incarceration admissions	2.0	1.9	3.0	2.0	2.0	1.3
Number of prior felony arrests	1.0	0.7	1.6	0.6	1.7	0.9
Number of prior arrests	6.7	5.9	6.7	5.8	7.0	7.8

VisionQuest’s Madalyn Program is a residential program designed to address the specific needs of troubled teenage girls.



Display 18, VisionQuest, Quest, Felony Recidivism Rates



Time Period	N. Released	Months Since Release			
		6 Months	12 Months	18 Months	24 Months
FY 95	9	11%	44%	78%	78%
FY 96	6	0%	50%	50%	50%
FY 97	1	0%	100%	100%	100%
FY 98	14	21%	36%	36%	43%
FY 99	20	45%	60%	60%	60%
FY 00	21	29%	48%	55%	65%
FY 01	20	15%	40%	50%	65%
FY 02	30	13%	30%	53%	53%
FY 03	14	43%	71%	86%	93%
FY 04	20	25%	35%	55%	67%
FY 05	9	11%	17%	.	.

Historical Profile of Youth Released by Fiscal Year

Average	Total	Fiscal Year Released										
		95	96	97	98	99	00	01	02	03	04	05
VisionQuest Quest LOS in months	4.9	10.6	12.9	11.3	5.6	5.8	5.9	4.5	3.5	2.9	2.1	2.3
Placement episode LOS in months	8.0	11.7	18.4	14.0	7.3	10.3	9.0	8.5	5.7	8.1	5.0	3.4
No. of prior detention admissions	3.5	1.9	2.8	3.0	3.1	3.6	3.5	2.9	3.2	4.4	5.0	4.4
No. of prior incarcerations	2.4	1.2	2.3	1.0	1.7	2.6	3.0	2.2	2.8	2.4	2.5	1.8
Number of prior felony arrests	2.1	3.9	4.3	3.0	2.1	2.1	1.3	2.0	1.4	2.8	2.2	2.0
Number of prior arrests	7.7	9.0	9.3	10.0	6.5	8.4	7.0	6.6	7.1	9.0	8.6	7.3

The VisionQuest's Quest provides an individualized wilderness program designed to meet the needs of juveniles ages 13 to 18 with histories of multiple unsuccessful out-of-home placements.

Level IV Recidivism Rates

Display 19, Level IV Small Program Felony Recidivism Rates

Au Clair School, General, Felony Recidivism Rates

Time Period	N. Released	Months Since Release			
		6 Months	12 Months	18 Months	24 Months
FY 95	1	100%	100%	100%	100%
FY 96	1	100%	100%	100%	100%
FY 97	2	0%	50%	50%	100%
FY 98	8	29%	29%	29%	43%
FY 99	4	50%	50%	75%	100%
FY 00	2	0%	50%	100%	100%
FY 01	4	50%	50%	100%	100%
FY 02	2	50%	50%	50%	50%
FY 03	1	100%	100%	100%	100%
FY 04	2	0%	50%	100%	100%
FY 05	2	0%	100%	.	.

A description was not available from DYRS for this Department of Education program..

Cornell Abraxas Youth Center, Fire Setter Program Felony Recidivism Rates

Time Period	N. Released	Months Since Release			
		6 Months	12 Months	18 Months	24 Months
FY 04	1	0%	0%	0%	.

Cornell Abraxas Youth Center's Fire Setter Program provides a structured, long term program with individual and group therapy for males with a history of fire setting behaviors between the ages of 12 and 18.

Benchmark Behavioral Health Felony Recidivism Rates

Time Period	N. Released	Months Since Release			
		6 Months	12 Months	18 Months	24 Months
FY 04	1	0%	0%	0%	.
FY 05	1	0%	.	.	.

Benchmark Behavioral Health provides a secured, long term, structured, goal oriented program for male adolescent sex offenders with severe behavioral problems between the ages of 13 and 19.

Bowling Brook Preparatory School Felony Recidivism Rates

Time Period	N. Released	Months Since Release			
		6 Months	12 Months	18 Months	24 Months
FY 95	5	0%	20%	40%	40%
FY 96	9	11%	11%	44%	67%
FY 97	2	50%	100%	100%	100%
FY 98	4	50%	75%	75%	75%
FY 99	10	0%	60%	70%	80%
FY 00	6	17%	33%	50%	83%
FY 01	3	33%	67%	67%	67%
FY 02	3	0%	67%	67%	67%
FY 03	1	0%	100%	100%	100%

Bowling Brook provides normative culture, substance abuse group and educational programming for males between the ages of 16 and 19.

Brown Schools of San Marcos Felony Recidivism Rates

Time Period	N. Released	Months Since Release			
		6 Months	12 Months	18 Months	24 Months
FY 05	1	0%	0%	.	.

A description was not available from DYRS for this program.

Chamberlain Academy, General, Felony Recidivism Rates

Time Period	N. Released	Months Since Release			
		6 Months	12 Months	18 Months	24 Months
FY 96	3	33%	33%	100%	100%
FY 97	10	30%	50%	60%	80%
FY 98	17	35%	53%	65%	71%
FY 99	10	50%	50%	60%	60%
FY 00	18	22%	28%	39%	56%
FY 01	5	40%	40%	80%	80%
FY 02	19	21%	37%	47%	58%
FY 03	2	0%	0%	0%	0%
FY 04	5	0%	40%	60%	75%
FY 05	1	0%	.	.	.

Chamberlain Academy, General, provides longer term coed programming for habitual juvenile offenders.

Level IV Recidivism Rates

Diversified Treatment Alternatives Felony Recidivism Rates

Time Period	N. Released	Months Since Release			
		6 Months	12 Months	18 Months	24 Months
FY 97	2	0%	0%	0%	0%
FY 98	2	0%	0%	0%	50%
FY 99	5	0%	20%	20%	20%
FY 00	4	0%	0%	0%	25%
FY 01	3	0%	33%	33%	33%
FY 02	5	20%	40%	40%	40%
FY 03	2	0%	0%	0%	0%
FY 04	6	17%	17%	17%	100%
FY 05	4	0%	0%	.	.

Diversified Treatment Alternatives provides specialized sexuality therapy groups, education/therapy groups, and a comprehensive intervention strategy to manage the behavior of male sex offenders 8 to 17 years of age.

Excelsior Youth Center Felony Recidivism Rates

Time Period	N. Released	Months Since Release			
		6 Months	12 Months	18 Months	24 Months
FY 95	5	0%	0%	20%	40%
FY 96	6	17%	17%	33%	50%
FY 97	3	0%	33%	33%	33%
FY 98	4	0%	25%	25%	25%
FY 99	2	0%	50%	50%	50%
FY 00	7	0%	0%	0%	14%
FY 01	8	13%	25%	25%	25%
FY 02	10	0%	0%	0%	0%
FY 03	3	0%	0%	33%	67%

Excelsior Youth Center provides programming for females ages 12 to 18 years of age who are emotionally and behaviorally disturbed. The individualized treatment includes individual psychotherapy, group psychotherapy, family counseling, and peer group interaction.

George Junior Republic, Special, Felony Recidivism Rates

Time Period	N. Released	Months Since Release			
		6 Months	12 Months	18 Months	24 Months
FY 96	4	75%	75%	100%	100%
FY 99	7	14%	29%	29%	43%
FY 00	3	0%	33%	67%	67%
FY 01	5	60%	60%	80%	80%
FY 02	3	100%	100%	100%	100%
FY 04	2	0%	0%	0%	0%

A description was not available from DYRS for this program.

Grace Cottage, Shelter Services, Felony Recidivism Rates

Time Period	N. Released	Months Since Release			
		6 Months	12 Months	18 Months	24 Months
FY 99	8	0%	0%	0%	0%
FY 00	6	17%	17%	17%	17%
FY 01	18	6%	11%	17%	17%
FY 02	28	0%	0%	4%	7%
FY 03	1	0%	0%	0%	0%
FY 04	4	25%	25%	50%	50%

Grace Cottage provided short-term shelter services for females 13 to 18 years of age. Grace Cottage did not operate from December 24, 2003, through January 18, 2005.

Grace Cottage, Short Term, Felony Recidivism Rates

Time Period	N. Released	Months Since Release			
		6 Months	12 Months	18 Months	24 Months
FY 99	18	17%	22%	28%	28%
FY 00	20	5%	10%	10%	25%
FY 01	15	0%	7%	13%	20%
FY 02	25	0%	16%	16%	24%
FY 03	1	0%	0%	0%	0%

Grace Cottage provided short-term residential treatment programming for females between the ages of 13 and 18 with supplemental community based services. Grace Cottage did not operate from December 24, 2003, through January 18, 2005.

Hennepin County Home School Felony Recidivism Rates

Time Period	N. Released	Months Since Release			
		6 Months	12 Months	18 Months	24 Months
FY 95	2	0%	0%	0%	0%
FY 96	2	0%	0%	50%	50%
FY 97	6	0%	17%	17%	17%
FY 98	1	0%	0%	0%	0%
FY 99	5	0%	40%	40%	60%
FY 00	4	25%	50%	50%	50%
FY 01	7	0%	0%	0%	29%
FY 02	3	0%	0%	0%	0%
FY 03	3	0%	0%	0%	0%
FY 04	2	50%	50%	50%	0%
FY 05	4	25%	50%	.	.

Hennepin County Home School provides comprehensive treatment for male sex offenders 14 to 18 years of age in a juvenile corrections facility.

Level IV Recidivism Rates

KidsPeace, Diagnostic Program, Felony Recidivism Rates

Time Period	N. Released	Months Since Release			
		6 Months	12 Months	18 Months	24 Months
FY 95	1	0%	0%	0%	0%
FY 96	1	100%	100%	100%	100%
FY 98	1	0%	0%	100%	100%
FY 99	2	0%	0%	0%	50%
FY 01	3	0%	0%	0%	0%
FY 02	2	0%	50%	50%	50%
FY 04	1	100%	100%	100%	.

KidsPeace’s Diagnostic Program provides short-term treatment services combined with a comprehensive diagnostic evaluation for juveniles 6 to 18 years of age.

KidsPeace, General, Felony Recidivism Rates

Time Period	N. Released	Months Since Release			
		6 Months	12 Months	18 Months	24 Months
FY 95	5	80%	80%	100%	100%
FY 96	7	14%	14%	43%	57%
FY 97	4	0%	0%	0%	25%
FY 98	6	0%	50%	67%	67%
FY 02	1	0%	100%	100%	100%
FY 03	1	0%	0%	0%	0%

KidsPeace’s General program provides 24-hour psychiatric care for juveniles 6 to 18 years of age that require longer-term supervision, residential, clinical, and educational services.

Manatee Palms Youth Service Felony Recidivism Rates

Time Period	N. Released	Months Since Release			
		6 Months	12 Months	18 Months	24 Months
FY 05	2	0%	0%	.	.

Manatee Palms Youth Services provides intensive psychiatric hospital/residential program with educational services for adjudicated male sex offenders requiring intensive behavioral health services.

Ministry of Caring, House of Joseph II, Felony Recidivism Rates

Time Period	N. Released	Months Since Release			
		6 Months	12 Months	18 Months	24 Months
FY 04	8	38%	38%	50%	50%
FY 05	10	30%	.	.	.

The Ministry of Caring’s House of Joseph II provides a residence for homeless males between the ages of 16 and 18 years of age who are transitioning out of the Ferris School for Boys into adulthood.

New Hope Treatment Centers, Dyad Program Felony Recidivism Rates

Time Period	N. Released	Months Since Release			
		6 Months	12 Months	18 Months	24 Months
FY 05	2	0%	0%	.	.

New Hope Treatment Centers' Dyad Program provides a residential therapeutic milieu for dually diagnosed male adolescents, ages 13 to 17.6, with mental retardation and/or developmental disabilities and significant emotional and/or behavioral issues.

New Hope Treatment Centers, Palmetto Point Program Felony Recidivism Rates

Time Period	N. Released	Months Since Release			
		6 Months	12 Months	18 Months	24 Months
FY 02	2	0%	0%	50%	50%
FY 03	1	0%	0%	0%	0%

New Hope Treatment Center's Palmetto Point Program provides long-term daily psychiatric treatment female sex offenders 11.6 to 17.6 years of age.

New Hope Treatment Centers, New Horizon Program Felony Recidivism Rates

Time Period	N. Released	Months Since Release			
		6 Months	12 Months	18 Months	24 Months
FY 00	1	0%	0%	0%	0%
FY 02	1	0%	0%	100%	100%
FY 05	2	0%	.	.	.

New Hope Treatment Center's New Horizon program (formerly the Synergy program) provides long-term daily psychiatric treatment to females 12 to 17.6 years of age.

New Hope Treatment Centers, Starting Pointe Program Felony Recidivism Rates

Time Period	N. Released	Months Since Release			
		6 Months	12 Months	18 Months	24 Months
FY 02	2	0%	0%	0%	0%
FY 03	3	0%	33%	33%	67%
FY 04	6	17%	17%	17%	0%
FY 05	4	0%	0%	.	.

New Hope Treatment Center's Starting Pointe program provides a highly structured milieu specifically designed to monitor and redirect sexually inappropriate behavior, along with a comprehensive array of clinical, educational and recreational services

Level IV Recidivism Rates

New Hope Treatment Centers, Triad Program Felony Recidivism Rates

Time Period	N. Released	Months Since Release			
		6 Months	12 Months	18 Months	24 Months
FY 00	6	0%	33%	33%	33%
FY 01	2	0%	50%	50%	50%
FY 02	4	0%	0%	25%	25%
FY 03	4	25%	50%	50%	50%
FY 04	1	0%	0%	0%	.

New Hope’s Triad Program provides an intensive and comprehensive residential treatment for male sex offenders 13 to 21 years of age with IQs ranging from 45 to 75.

New Hope Treatment Centers, Way Point Program Felony Recidivism Rates

Time Period	N. Released	Months Since Release			
		6 Months	12 Months	18 Months	24 Months
FY 00	1	0%	0%	0%	0%
FY 01	4	0%	0%	0%	0%
FY 02	4	0%	25%	25%	25%
FY 03	4	50%	50%	50%	50%
FY 04	2	0%	0%	0%	0%
FY 05	4	0%	0%	.	.

New Hope Treatment Centers’ Way Point program provides treatment for sexually aggressive behavior to moderate to high-risk adolescent males 12 to 17.6 years of age.

The Pines, Behavioral Studies Program, Felony Recidivism Rates

Time Period	N. Released	Months Since Release			
		6 Months	12 Months	18 Months	24 Months
FY 97	1	0%	0%	0%	0%
FY 99	2	0%	0%	0%	0%
FY 00	3	0%	33%	33%	33%
FY 01	3	0%	0%	33%	33%
FY 02	8	0%	13%	13%	13%
FY 03	2	0%	50%	50%	100%
FY 04	2	0%	0%	0%	.
FY 05	2	0%	0%	.	.

The Pines’ Behavioral Studies Program provides treatment for sex offenders, ages 10 to 18, in a highly structured residential environment.

The Pines, The Cooperative Program, Felony Recidivism Rates

Time Period	N. Released	Months Since Release			
		6 Months	12 Months	18 Months	24 Months
FY 00	2	0%	0%	0%	0%
FY 03	1	100%	100%	100%	100%

The Pines’ Cooperative Program provides treatment for juveniles with severe emotional and behavioral problems and significant developmental disabilities.



The Pines, The Cottage/Right Track Program, Felony Recidivism Rates

Time Period	N. Released	Months Since Release			
		6 Months	12 Months	18 Months	24 Months
FY 01	2	0%	0%	50%	50%
FY 02	1	0%	0%	0%	0%
FY 03	1	0%	0%	0%	0%

The Pines' Cottage/Right Track Program provides services to psycho-sexually disturbed males 10 to 17 years of age with full scale IQs between 50 and 60.

The Pines, General, Felony Recidivism Rates

Time Period	N. Released	Months Since Release			
		6 Months	12 Months	18 Months	24 Months
FY 95	2	0%	0%	50%	100%
FY 96	2	50%	50%	50%	50%
FY 97	10	40%	50%	50%	50%
FY 98	9	33%	44%	44%	56%
FY 99	10	0%	10%	30%	30%
FY 00	7	14%	43%	57%	57%
FY 01	3	0%	33%	33%	33%
FY 03	2	0%	0%	0%	0%
FY 04	1	0%	0%	0%	0%
FY 05	2	0%	.	.	.

The Pines provides special education in a therapeutic residential setting to juveniles with a DSM-IV psychiatric diagnosis between the ages of 10 and 17 years upon admission.

The Pines, The Adolescent Male Insight Program Felony Recidivism Rates

Time Period	N. Released	Months Since Release			
		6 Months	12 Months	18 Months	24 Months
FY 00	4	0%	0%	50%	50%
FY 01	3	0%	33%	67%	67%
FY 02	5	20%	40%	40%	60%
FY 03	3	33%	33%	33%	33%
FY 04	1	0%	0%	0%	0%
FY 05	4	0%	0%	.	.

The Pines' The Adolescent Male Insight Program (formerly The Phoenix Program) provides treatment for aggressive mentally ill males 12 to 18 years of age who are having mental health problems coupled with significant behavior problems.

Level IV Recidivism Rates

The Pines, Young Men and Young Women’s Center Felony Recidivism Rates

Time Period	N. Released	Months Since Release			
		6 Months	12 Months	18 Months	24 Months
FY 00	1	0%	0%	0%	0%
FY 01	2	0%	0%	0%	0%
FY 02	2	50%	50%	50%	50%
FY 03	1	0%	100%	100%	100%

The Pines’ Young Men and Young Women’s Centers provide treatment for juveniles who have been diagnosed with psychiatric and behavioral problems.

Renewal Center Felony Recidivism Rates

Time Period	N. Released	Months Since Release			
		6 Months	12 Months	18 Months	24 Months
FY 01	1	0%	0%	0%	100%
FY 04	1	0%	100%	100%	100%

Renewal Center provides residential treatment services for offenders diagnosed with Psychoactive Substance Use Disorder.

Riverside Treatment Services, Inc., Felony Recidivism Rates

Time Period	N. Released	Months Since Release			
		6 Months	12 Months	18 Months	24 Months
FY 02	2	50%	50%	50%	50%
FY 03	2	0%	0%	0%	0%
FY 04	1	100%	100%	100%	100%
FY 05	1	0%	.	.	.

Residential Treatment Services, Inc. provides residential mental health services and acute psychiatric hospital services for juveniles that are dually diagnosed and/or are resistant to treatment.

Today Inc., New Dawn, Felony Recidivism Rates

Time Period	N. Released	Months Since Release			
		6 Months	12 Months	18 Months	24 Months
FY 03	4	50%	50%	50%	50%
FY 04	3	33%	67%	67%	.
FY 05	7	0%	0%	.	.

Today Inc.’s New Dawn program provides adjudicated juveniles, between the ages of 13 to 18, with a short history of alcohol or marijuana dependence short-term (30 day) drug and alcohol treatment.

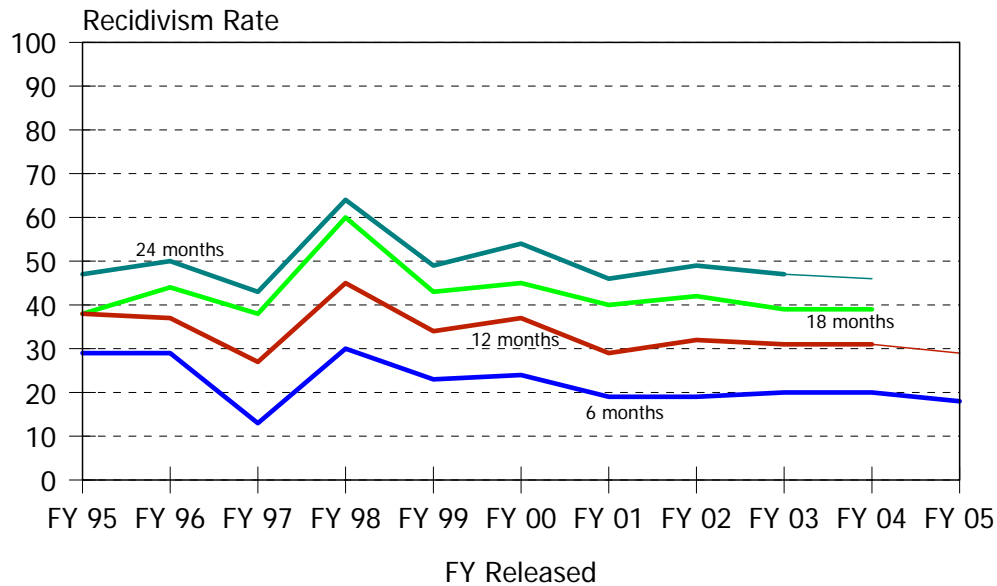
VisionQuest, Lady of The Lakes, Felony Recidivism Rates

Time Period	N. Released	Months Since Release			
		6 Months	12 Months	18 Months	24 Months
FY 03	1	0%	0%	0%	0%
FY 05	1	0%	0%	.	.

VisionQuest's Lady of the Lakes provides residential programming for pregnant offenders and teen mothers with one child up to 2 years of age.

Intentionally Blank

Display 20, Level III Residential Felony Recidivism Rates



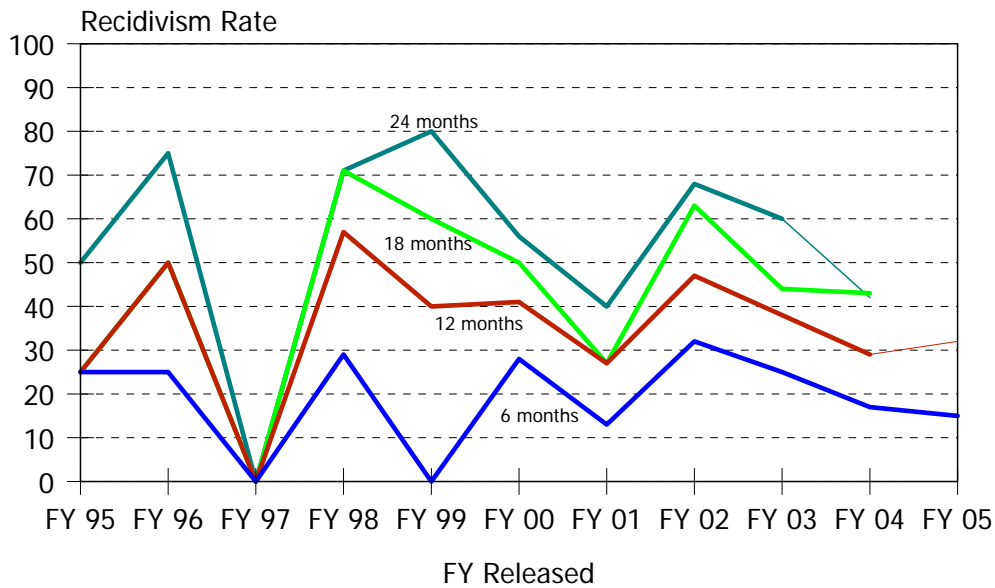
Level III Felony Recidivism Rates

Time Period	N. Released	Months Since Release			
		6 Months	12 Months	18 Months	24 Months
FY 95	34	29%	38%	38%	47%
FY 96	52	29%	37%	44%	50%
FY 97	107	13%	27%	38%	43%
FY 98	188	30%	45%	60%	64%
FY 99	173	23%	34%	43%	49%
FY 00	269	24%	37%	45%	54%
FY 01	475	19%	29%	40%	46%
FY 02	598	19%	32%	42%	49%
FY 03	835	20%	31%	39%	47%
FY 04	938	20%	31%	39%	46%
FY 05	1,035	18%	29%	.	.

Historical Profile of Youth Released by Fiscal Year

Average	Total	Fiscal Year Released										
		95	96	97	98	99	00	01	02	03	04	05
Level III LOS in months	3.3	9.6	5.9	7.6	6.6	6.0	5.4	3.1	3.5	2.9	2.1	2.1
Placement episode LOS in months	4.9	10.7	8.8	10.0	9.7	9.1	7.5	4.6	5.8	4.6	3.3	3.0
No. of prior detention admissions	2.0	2.3	2.0	2.2	2.3	2.1	2.0	1.8	1.9	2.1	2.2	2.0
No. of prior incarcerations	0.9	0.4	0.9	0.8	1.0	1.2	1.1	0.8	1.0	1.1	1.0	0.8
Number of prior felony arrests	1.3	2.2	2.7	1.6	2.3	1.9	1.7	1.3	1.2	1.2	1.2	1.2
Number of prior arrests	5.6	7.2	8.3	6.4	6.6	6.6	5.7	5.1	5.3	5.7	5.6	5.5

Display 21, Camelot, General, Felony Recidivism Rates



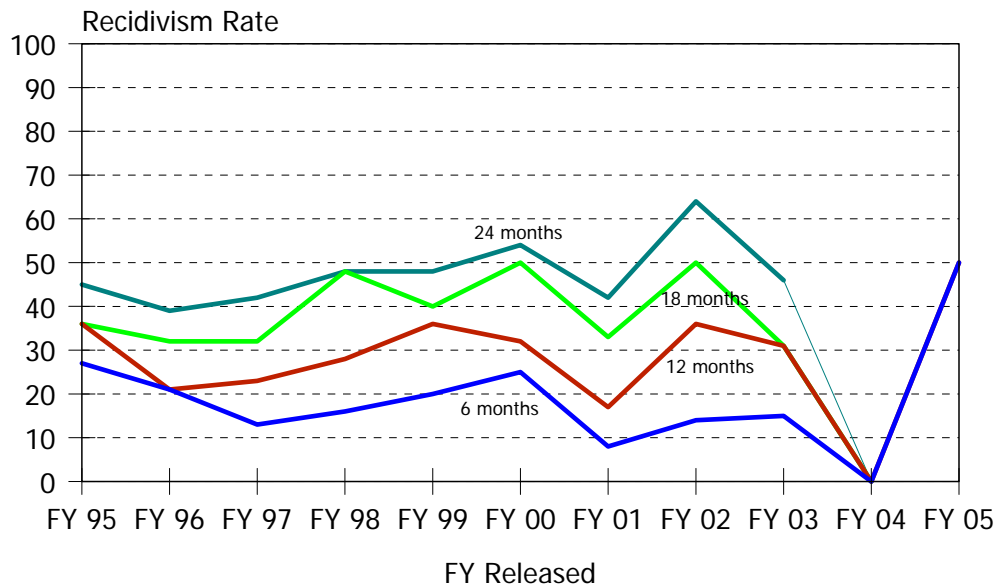
Time Period	N. Released	Months Since Release			
		6 Months	12 Months	18 Months	24 Months
FY 95	4	25%	25%	25%	50%
FY 96	4	25%	50%	50%	75%
FY 97	3	0%	0%	0%	0%
FY 98	7	29%	57%	71%	71%
FY 99	5	0%	40%	60%	80%
FY 00	18	28%	41%	50%	56%
FY 01	15	13%	27%	27%	40%
FY 02	19	32%	47%	63%	68%
FY 03	16	25%	38%	44%	60%
FY 04	35	17%	29%	43%	42%
FY 05	48	15%	32%	.	.

Historical Profile of Youth Released by Fiscal Year

Average	Total	Fiscal Year Released											
		95	96	97	98	99	00	01	02	03	04	05	
Camelot General LOS in months	1.2	5.2	3.2	1.9	2.5	3.6	1.9	1.7	1.1	0.5	0.5	0.7	
Placement episode LOS in months	5.7	5.2	10.7	3.5	12.9	14.2	9.7	14.4	9.8	2.8	2.4	1.2	
No. of prior detention admissions	2.7	1.8	1.8	0.7	3.9	1.6	3.3	2.5	2.4	2.3	2.9	2.8	
No. of prior incarcerations	1.5	0.3	0.8	0.7	2.0	1.2	2.1	2.3	1.5	1.3	1.0	1.7	
Number of prior felony arrests	1.4	1.5	1.0	2.0	3.3	1.2	1.7	1.4	1.9	0.9	1.1	1.4	
Number of prior arrests	6.2	5.3	6.0	5.3	8.4	4.0	6.5	4.5	5.5	5.9	6.2	7.1	

Camelot, General, provides residential group care to pre-adjudicated males between the ages of 12 and 18.

Display 22, Child, Inc., General, Felony Recidivism Rates



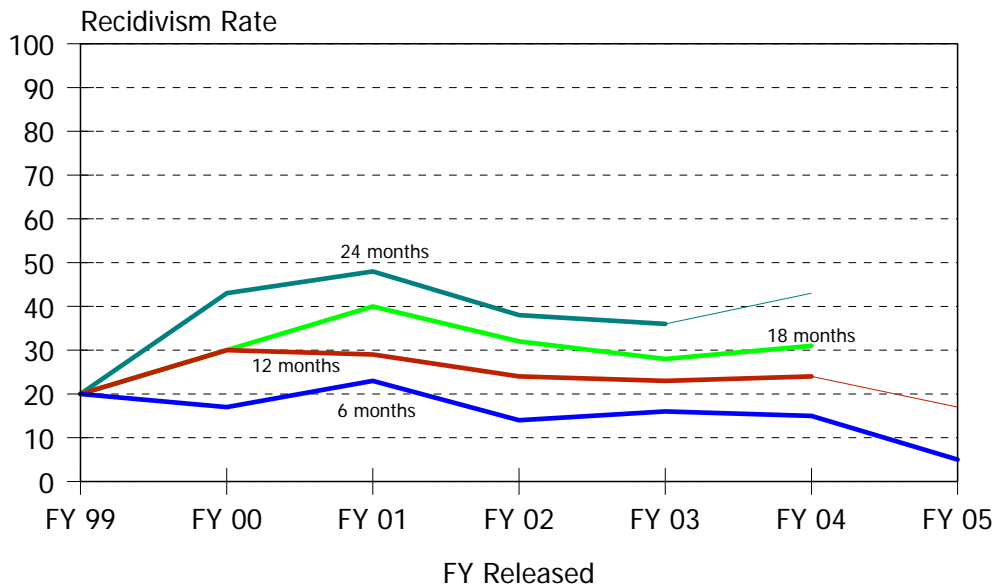
Time Period	N. Released	Months Since Release			
		6 Months	12 Months	18 Months	24 Months
FY 95	22	27%	36%	36%	45%
FY 96	28	21%	21%	32%	39%
FY 97	32	13%	23%	32%	42%
FY 98	25	16%	28%	48%	48%
FY 99	25	20%	36%	40%	48%
FY 00	28	25%	32%	50%	54%
FY 01	12	8%	17%	33%	42%
FY 02	14	14%	36%	50%	64%
FY 03	13	15%	31%	31%	46%
FY 04	3	0%	0%	0%	0%
FY 05	2	50%	50%	.	.

Historical Profile of Youth Released by Fiscal Year

Average	Total	Fiscal Year Released										
		95	96	97	98	99	00	01	02	03	04	05
Child Inc., General LOS in months	1.2	5.2	3.2	1.9	2.5	3.6	1.9	1.7	1.1	0.5	0.5	0.7
Placement episode LOS in months	5.7	5.2	10.7	3.5	12.9	14.2	9.7	14.4	9.8	2.8	2.4	1.2
No. of prior detention admissions	2.7	1.8	1.8	0.7	3.9	1.6	3.3	2.5	2.4	2.3	2.9	2.8
No. of prior incarcerations	1.5	0.3	0.8	0.7	2.0	1.2	2.1	2.3	1.5	1.3	1.0	1.7
Number of prior felony arrests	1.4	1.5	1.0	2.0	3.3	1.2	1.7	1.4	1.9	0.9	1.1	1.4
Number of prior arrests	6.2	5.3	6.0	5.3	8.4	4.0	6.5	4.5	5.5	5.9	6.2	7.1

Child, Inc., General, provides foster care for adjudicated juveniles between the ages of 8 and 18.

Display 23, Cornell Abraxas, Home Based Services, Felony Recidivism Rates



Time Period	N. Released	Months Since Release			
		6 Months	12 Months	18 Months	24 Months
FY 99	5	20%	20%	20%	20%
FY 00	30	17%	30%	30%	43%
FY 01	65	23%	29%	40%	48%
FY 02	76	14%	24%	32%	38%
FY 03	98	16%	23%	28%	36%
FY 04	112	15%	24%	31%	43%
FY 05	100	5%	17%	.	.

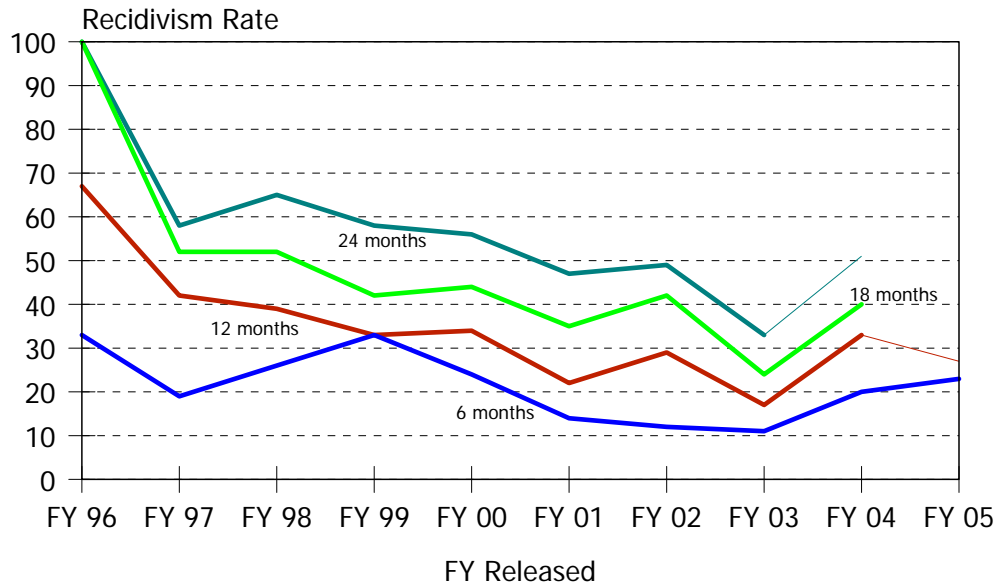
Historical Profile of Youth Released by Fiscal Year

Average	Total	Fiscal Year Released							
		99	00	01	02	03	04	05	
Abraxas HBS LOS in months	2.7	2.3	2.5	2.9	3.0	2.7	2.3	2.5	
Placement episode LOS in months	9.1	3.7	9.1	6.7	25.7	9.1	3.7	9.1	
No. of prior detention admissions	2.8	2.0	5.0	1.7	4.5	2.8	2.0	5.0	
No. of prior incarceration admissions	0.7	0.3	1.3	0.6	0.5	0.7	0.3	1.3	
Number of prior felony arrests	1.4	1.7	2.7	0.7	1.5	1.4	1.7	2.7	
Number of prior arrests	6.7	4.3	8.3	7.4	5.5	6.7	4.3	8.3	

Cornell Abraxas Home Based Services provides one-on-one case management, individual and family intervention and counseling, assistance with community resources for youth and family and assistance with job placement.



Display 24, Cornell Abraxas, Intensive Home Based Services, Felony Recidivism Rates



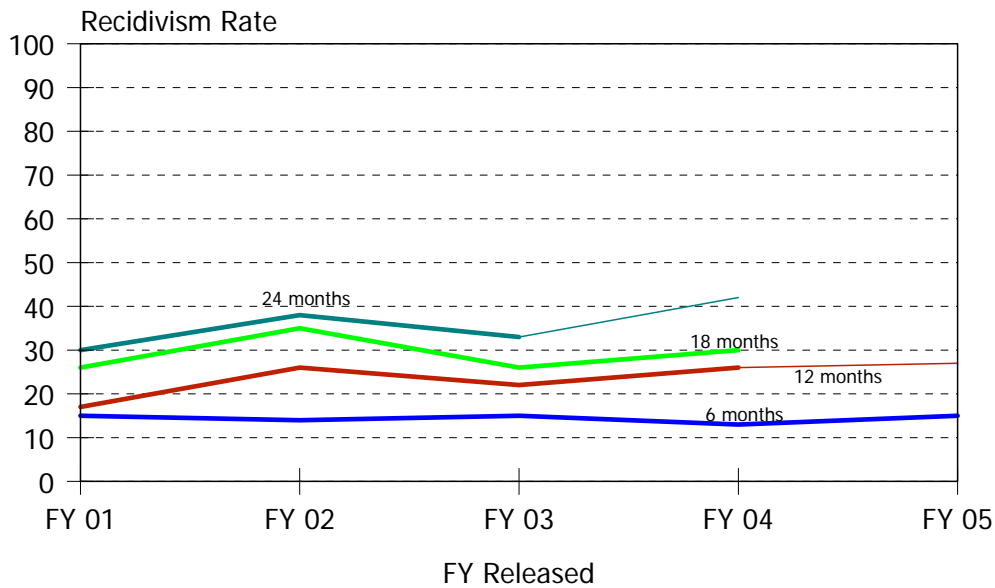
Time Period	N. Released	Months Since Release			
		6 Months	12 Months	18 Months	24 Months
FY 96	3	33%	67%	100%	100%
FY 97	32	19%	42%	52%	58%
FY 98	31	26%	39%	52%	65%
FY 99	12	33%	33%	42%	58%
FY 00	50	24%	34%	44%	56%
FY 01	51	14%	22%	35%	47%
FY 02	59	12%	29%	42%	49%
FY 03	88	11%	17%	24%	33%
FY 04	105	20%	33%	40%	51%
FY 05	101	23%	27%	.	.

Historical Profile of Youth Released by Fiscal Year

Average	Total	Fiscal Year Released										
		96	97	98	99	00	01	02	03	04	05	
Abraxas IHBS LOS in months	3.2	1.8	5.4	4.4	4.0	1.2	2.4	3.6	3.2	1.8	5.4	
Placement episode LOS in months	9.7	11.1	53.7	9.4	4.5	1.2	5.9	8.9	9.7	11.1	53.7	
No. of prior detention admissions	2.7	6.0	3.0	1.5	1.3	0.0	3.4	3.5	2.7	6.0	3.0	
No. of prior incarceration admissions	1.3	0.0	4.0	0.0	0.7	0.0	1.2	3.5	1.3	0.0	4.0	
Number of prior felony arrests	1.4	0.0	4.0	0.0	0.3	1.0	2.6	1.0	1.4	0.0	4.0	
Number of prior arrests	8.9	1.0	13.0	5.5	6.0	7.0	12.6	10.5	8.9	1.0	13.0	

Cornell Abraxas Intensive Home Based Services provides one-on-one case management, intensive home-based family intervention and counseling, assistance with community resources, family and assistance with job placement, electronic monitoring, and assistance with job placement/retention.

Display 25, People's Place II, Felony Recidivism Rates



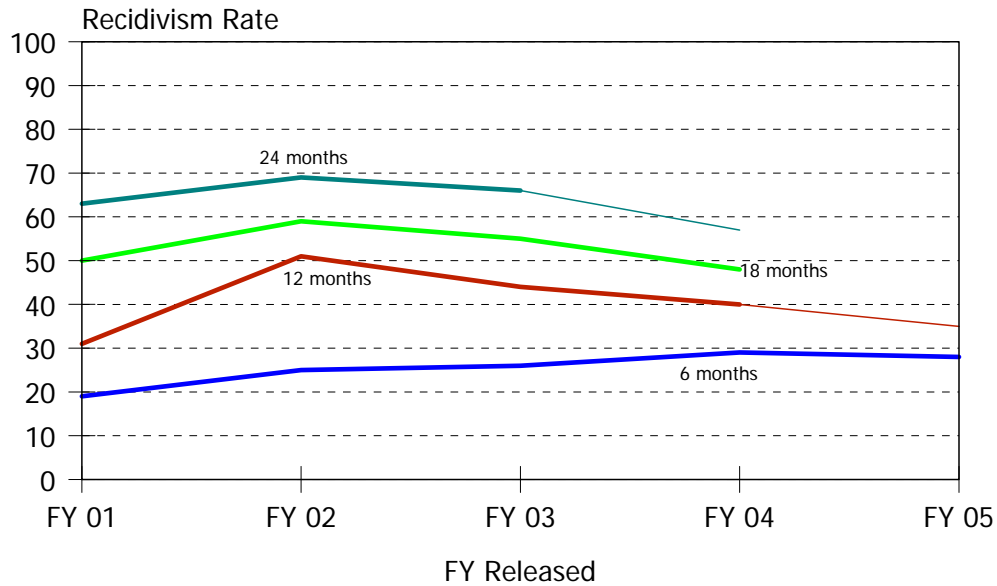
Time Period	N. Released	Months Since Release			
		6 Months	12 Months	18 Months	24 Months
FY 01	104	15%	17%	26%	30%
FY 02	110	14%	26%	35%	38%
FY 03	148	15%	22%	26%	33%
FY 04	172	13%	26%	30%	42%
FY 05	157	15%	27%	.	.

Historical Profile of Youth Released by Fiscal Year

Average	Total	Fiscal Year Released				
		01	02	03	04	05
People's Place II LOS in months	3.3	3.3	4.0	3.1	2.0	3.1
Placement episode LOS in months	5.8	5.7	6.4	6.0	3.3	6.0
Number of prior detention admissions	3.5	3.3	4.1	2.2	2.0	4.2
Number of prior incarceration admissions	2.0	1.9	3.0	2.0	2.0	1.3
Number of prior felony arrests	1.0	0.7	1.6	0.6	1.7	0.9
Number of prior arrests	6.7	5.9	6.7	5.8	7.0	7.8

People's Place II operates a supervised group home as an alternative to secure detention.

Display 26, Project Stay Free, Day Treatment Program, Felony Recidivism Rates



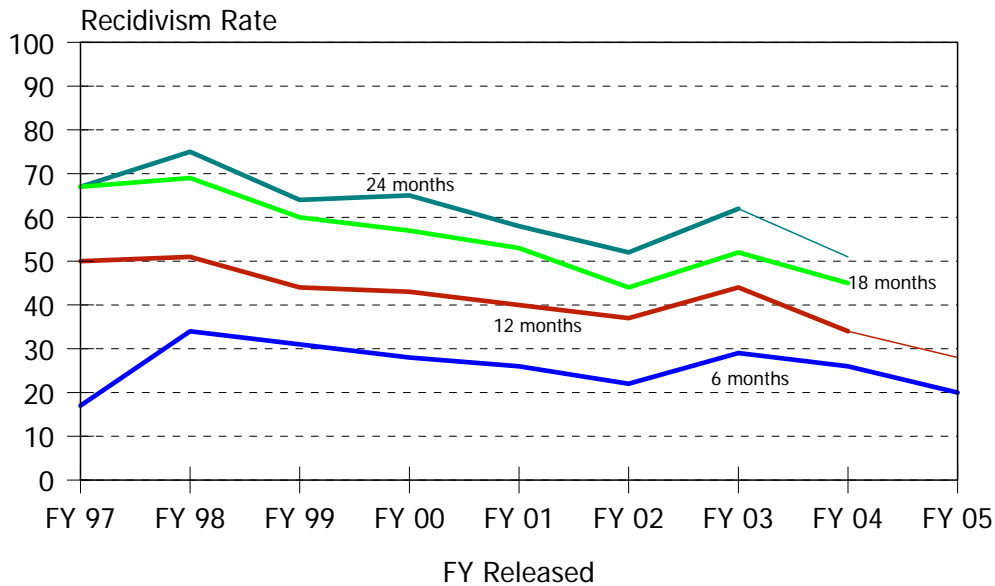
Time Period	N. Released	Months Since Release			
		6 Months	12 Months	18 Months	24 Months
FY 01	32	19%	31%	50%	63%
FY 02	62	25%	51%	59%	69%
FY 03	66	26%	44%	55%	66%
FY 04	62	29%	40%	48%	57%
FY 05	68	28%	35%	.	.

Historical Profile of Youth Released by Fiscal Year

Average	Total	Fiscal Year Released				
		01	02	03	04	05
Project Stay Free Day Treatment LOS.	2.7	2.0	3.6	3.2	2.7	1.9
Placement episode LOS in months	4.7	3.6	6.5	4.9	4.6	3.3
Number of prior detention admissions	3.6	2.1	3.0	3.9	4.0	4.0
Number of prior incarceration admissions	1.9	1.5	1.8	2.0	2.1	2.0
Number of prior felony arrests	1.6	1.3	1.6	1.9	1.7	1.4
Number of prior arrests	7.2	5.3	6.6	8.2	7.3	7.8

Project Stay Free provides intensive day treatment services to adjudicated New Castle County residents with an expected length of stay of four months.

Display 27, Project Stay Free,  
Intensive Home Based Services, Felony Recidivism Rates



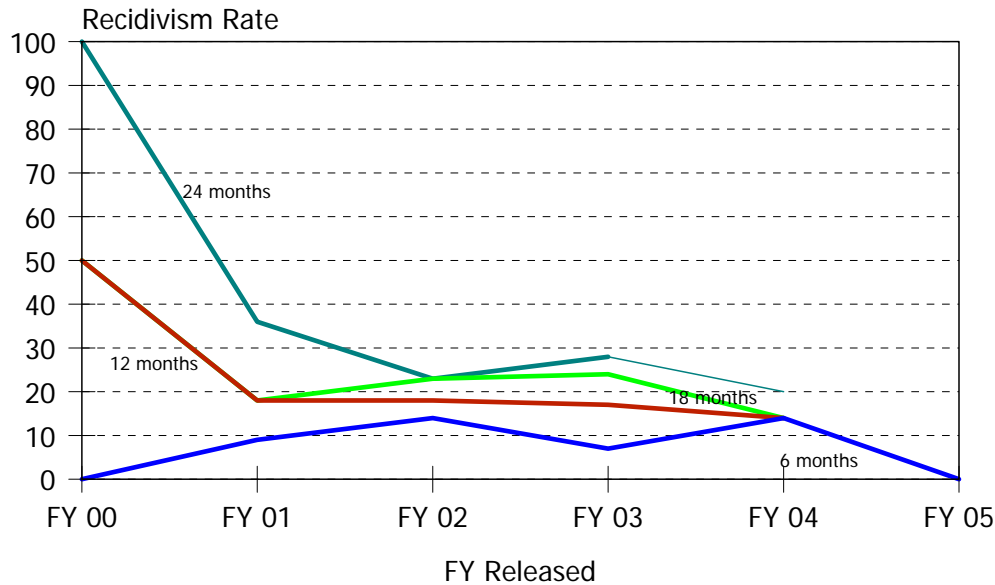
Time Period	N. Released	Months Since Release			
		6 Months	12 Months	18 Months	24 Months
FY 97	6	17%	50%	67%	67%
FY 98	68	34%	51%	69%	75%
FY 99	45	31%	44%	60%	64%
FY 00	79	28%	43%	57%	65%
FY 01	112	26%	40%	53%	58%
FY 02	104	22%	37%	44%	52%
FY 03	182	29%	44%	52%	62%
FY 04	220	26%	34%	45%	51%
FY 05	270	20%	28%	.	.

Historical Profile of Youth Released by Fiscal Year

Average	Total	Fiscal Year Released									
		97	98	99	00	01	02	03	04	05	
Project Stay Free ICCP LOS	3.1	6.9	6.0	6.1	4.4	3.6	3.7	2.8	1.9	2.1	
Placement episode LOS in months	4.4	10.1	9.6	10.8	6.3	4.8	5.9	3.8	2.5	2.6	
No. of prior detention admissions	2.3	1.5	2.2	2.1	2.2	2.1	2.1	2.6	2.9	1.9	
No. of prior incarceration admissions	0.9	1.8	1.1	1.3	1.0	0.9	0.6	1.1	1.2	0.5	
Number of prior felony arrests	1.6	1.5	2.9	2.9	2.1	1.7	1.5	1.4	1.4	1.1	
Number of prior arrests	5.9	4.3	6.4	7.0	5.7	5.5	5.4	6.4	6.3	5.4	

Project Stay Free provides Intensive Home Based Services (ICCP) with an expected length of stay of three months.

Display 28, Psychotherapeutic  
Children's Services, Family Support Program, Felony Recidivism Rates



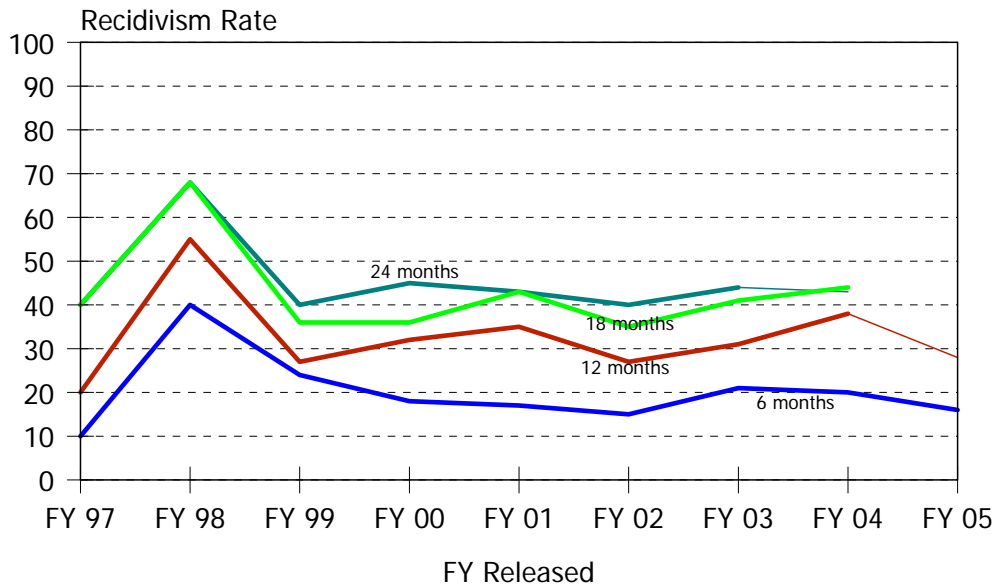
Time Period	N. Released	Months Since Release			
		6 Months	12 Months	18 Months	24 Months
FY 00	2	0%	50%	50%	100%
FY 01	11	9%	18%	18%	36%
FY 02	22	14%	18%	23%	23%
FY 03	29	7%	17%	24%	28%
FY 04	14	14%	14%	14%	20%
FY 05	12	0%	0%	.	.

Historical Profile of Youth Released by Fiscal Year

Average	Total	Fiscal Year Released					
		00	01	02	03	04	05
PCS Family Support Services LOS	18.7	0.6	18.4	23.5	25.9	13.7	18.7
Placement episode LOS in months	52.0	43.6	39.5	52.5	74.8	45.0	52.0
Number of prior detention admissions	1.2	2.0	1.5	1.7	0.5	0.5	1.2
Number of prior incarceration admissions	2.3	4.0	2.0	2.3	2.0	2.0	2.3
Number of prior felony arrests	1.3	1.0	2.0	1.0	1.0	1.5	1.3
Number of prior arrests	2.0	3.0	2.5	2.3	1.0	1.5	2.0

Psychotherapeutic Children's Services, Family Support Services implements and coordinates the family therapy component of a sexual offender's treatment plan while there are in placement and the comprehensive relapse prevention plan when the sexual offender returns to the family.

Display 29, Psychotherapeutic Children's Services, Multisystemic Therapy Program, Felony Recidivism Rates



Time Period	N. Released	Months Since Release			
		6 Months	12 Months	18 Months	24 Months
FY 97	10	10%	20%	40%	40%
FY 98	47	40%	55%	68%	68%
FY 99	67	24%	27%	36%	40%
FY 00	66	18%	32%	36%	45%
FY 01	84	17%	35%	43%	43%
FY 02	100	15%	27%	35%	40%
FY 03	90	21%	31%	41%	44%
FY 04	93	20%	38%	44%	43%
FY 05	108	16%	28%	.	.

Historical Profile of Youth Released by Fiscal Year

Average	Total	Fiscal Year Released									
		97	98	99	00	01	02	03	04	05	
PCS MST LOS in months	3.8	8.8	4.5	5.9	2.2	2.5	3.0	3.4	3.2	3.8	
Placement episode LOS in months	9.4	9.5	16.3	18.1	5.9	17.4	10.6	4.5	6.4	9.4	
No. of prior detention admissions	3.1	5.0	4.0	5.0	2.4	4.0	4.0	1.8	2.3	3.1	
No. of prior incarceration admissions	1.4	3.0	0.3	3.0	0.8	3.5	1.0	0.8	1.3	1.4	
Number of prior felony arrests	1.6	5.5	0.7	3.0	0.8	1.0	2.3	0.8	1.5	1.6	
Number of prior arrests	5.7	11.5	4.7	6.5	4.4	6.5	5.3	5.2	5.8	5.7	

Psychotherapeutic Children's Services, Multisystemic Therapy Program is an intensive and comprehensive community based therapeutic intervention model that provides cognitive therapy for client and families with a low one to four to six therapists to client ratio.

Display 30, Level III Small Program Felony Recidivism Rates

Diversified Treatment Alternatives, Foster Care, Felony Recidivism Rates

Time Period	N. Released	Months Since Release			
		6 Months	12 Months	18 Months	24 Months
FY 98	2	0%	0%	100%	100%
FY 02	2	0%	0%	0%	0%
FY 03	2	0%	0%	0%	0%
FY 05	2	0%	.	.	.

Diversified Treatment Alternatives provides temporary and long-term foster care for sexual offenders that successfully completed Diversified Treatment Alternatives' Level IV program.

YMCA, Weekly, Felony Recidivism Rates

Time Period	N. Released	Months Since Release			
		6 Months	12 Months	18 Months	24 Months
FY 96	2	50%	50%	50%	50%
FY 97	1	0%	0%	100%	100%
FY 99	1	100%	100%	100%	100%
FY 00	5	0%	40%	40%	40%
FY 01	1	0%	0%	0%	100%
FY 02	2	50%	50%	50%	100%
FY 04	1	100%	100%	100%	100%

YMCA's Weekly program provides emergency housing – with no additional services – for adjudicated males 18 years of age who are in need of immediate and temporary housing.

Intentionally Blank



## Data Sources

### Criminal Justice Information System Data

Arrest data was downloaded from the Criminal Justice Information System (CJIS) on January 25, 2006, for use in this study. Before the arrest data could be analyzed, extensive cleanup and charge selection was required according to the following protocol:

- a. Complete criminal history information was downloaded from CJIS at the charge level for all youth released from a residential Level IV or V program from July 1, 1994 through June 30, 2005.
- b. Charges from arresting jurisdictions other than “DE” were excluded, thus deleting charges under municipal ordinances.
- c. Charges for Title 21 offenses not related to driving under the influence or the theft of a motor vehicle were excluded.
- d. Offense Title, Section, Class, and Type citations were verified against the SAC’s law file. Where CJIS statute citations did not match the law file, the citations were corrected. The SAC’s law file matches current state statutes. For example, an offender’s arrest for burglary in the third degree, a class F felony, appeared in CJIS as an unclassified misdemeanor.
- e. Attempted offenses charged under 11 Del.C. § 531 were corrected to the actual statute violated where an appropriate match could be made against the attempted offense’s literal description. For example, 11 Del.C. § 531, attempted theft over \$1,000, was recoded as an arrest for 11 Del.C. § 841, theft over \$1,000 – attempted.
- f. Attempted offenses charged under 11 Del.C. § 531 where the literal description did not reference an actual offense (Attempted attempt to commit a crime) and the NCIC code was not missing, were recoded to the actual statutes using the NCIC code.
- g. Attempted offenses charged under 11 Del.C. § 531 where the literal description did not reference an actual offense (Attempted attempt to commit a crime) and the NCIC code was missing, were recoded to actual statutes through the descriptive information contained in CJIS under the offense’s complaint number.
- h. Attempted offenses charged under 11 Del.C. § 531 where the literal description did not reference an actual offense, the NCIC code was missing and the complaint information did not yield any clues as to the crime committed were resolved within the context of the offender’s arrest patterns and criminal career.
- i. Criminal charges for individual offenders were aggregated at the arrest level, thus providing a collection of all relevant charges by offender and date of arrest, i.e., charges were aggregated into arrest events by date of arrest and SBI number.

Incorrect statute citations on 16,472 charges, or 6.5 percent, were changed to match the SAC law file.

## Juvenile Placement Data

Release cohort data was extracted from the data maintained on the DSCYF's Family and Child Tracking System (FACTS), and the SAC's DYRS facility database, for youth released from placements from July 1, 1994, through June 30, 2005. Release cohort data was conflated according to the following protocol:

- a. DFS, CMH, and alternative Level III, IV and V program data was extracted from FACTS on October 31, 2005. The alternative placement information (program name, admission and release dates) was verified against DSCYF fiscal records. If the fiscal records were not found, the placement information was verified through the program's records, when these were available.
- b. The program data were integrated with the SAC's juvenile facility database.
  - Excluded from the dataset were alternative placement records which coincided with a facility placement record, i.e., if a youth was serving time in Ferris but a bed was being saved in an alternative program, only the Ferris record was included in the dataset.
  - For cases where an alternative programs placement spanned over an admission into a secure facility, i.e., a youth was sent to the Stevenson House for a 72 hour administrative hold, the alternative program's placement information was adjusted to reflect the exit from the program and the entry into secure care.
  - For cases where an alternative program placement spanned over another alternative program placement, i.e. a youth's bed was being saved in a program while the youth was being held in a Level IV Snowden Cottage slot, admission and release dates were adjusted to correspond to fiscal records.
  - For cases where fiscal records showed that a youth was transferred, admitted, and/or released, but there was no corresponding record of the transfer in FACTS, a new record was created to reflect this movement.

A total of 3,287 placement records were found to be in error, an alternative residential program data error rate of 13.4 percent, due to discrepancies in admission and/or release dates when compared to fiscal records, missing records, duplication, and offender identification problems.

## Secure Placement Episodes

Secure placement episodes comprise a continuous period of time when a youth is not in the community and may include multiple releases from secure residential placements. For example, the typical Ferris School for Boys placement episode includes three uninterrupted placements: (1) admission to the Detention Center, (2) admission to Ferris School, and (3) transition back to the community through Mowlds Cottage.

The cohort data in this study includes releases from secure or institutional out-of-home placement episodes, and non-secure Level III placements. Secure placements include DYRS

detention and Level IV and Level V programs which house adjudicated youth in secure settings. Secure placements also include Division of Family Services (DFS) and Child Mental Health (CMH) programs that provide residential services which are classified by DSCYF as crisis bed, mental health; inpatient hospital; inpatient hospital, mental health; residential group care, treatment center; residential Interagency Collaborative Team; residential treatment, mental health; and residential treatment, substance abuse.

From time-to-time a secure DYRS placement will be preceded or followed by a DFS or CMH residential placement. Residential DFS and CMH placements are included in this study for youth that had at least one active DYRS residential placement. Youth without DYRS residential placements are not a part of this study. DFS and CMH placements are included in this study so that the time a youth spends in the community after being released from a secure residential placement episode can be calculated accurately.

Youth in Level III programs are in the community while they attend school, recreational activities, attend counseling sessions or receive vocational training. Some Level III programs are classified by FACTS as being residential. FACTS' residential classification applies to Level III programs that provide group care, independent living, non-secure detention, and transitional services. These programs are not secure residential programs.

During the study period, 6,357 juveniles were released from 38,238 placements. These 38,238 placements can be grouped into 23,710 placement episodes. Thirty-two percent (7,482) of the placement episodes during the study period were DYRS secure placement episodes. Fifteen percent (3,615) were Level III placement episodes. The remainder were DFS, CMH and secure detention placement episodes.

## Level III, IV and V Recidivism Study Dataset

The analysis file was produced by joining the latest available offender identification (SBI, and demographic information such as name, date of birth, race), arrest history (CJIS) and placement data (DYRS facility and contracted III, IV and V programs). Since the analysis file used for calculating all the statistics in this report was conflated from the latest available information, the statistics presented in this document supersede statistics presented in previous reports. In total, 251,793 arrest charges were identified, verified and matched against 38,238 out-of-home placements to produce the analysis file.

No felony recidivism statistics are presented in this document for pre-trial juvenile detainees. The adjudicated Level V felony recidivism rates presented in this document for juveniles held in detention centers apply to juveniles who were adjudicated and subsequently admitted to a detention center or were held in a detention center for more than 10 days after their adjudication.

Considered as Ferris students, for this analysis, were offenders that spent at least one day in the Ferris School before their transfer to Mowlds Cottage or release to the community.

Considered as Mowlds Cottage youth were juveniles who spent their entire incarceration at Mowlds Cottage before being released to the community.

## DYRS/DOC Re-admission Recidivism Dataset

DOC release cohort data was extracted from CJIS, for juveniles that had been released from a DYRS Level V placement from July 1, 1994, through June 30, 2005. DOC release cohort data was conflated according to the following protocol:

- a. DOC detention, Level IV and V admission and release data was extracted from CJIS on January 25, 2006.
- c. DOC data were integrated with the SAC's juvenile placement data.
  - Excluded from the DYRS/DOC re-admission recidivism dataset were DOC records where an offender was in the community under supervised custody, direct supervision, pre-trial services, home confinement, assigned to a Probation and Parole institution or to *restitution only*.
  - When an offender had a Central Violation of Probation, Plummer House or Sussex Halfway House Work Release case, and the location file showed that during part of the case the offender had been in a *hard* institution, i.e., Women's Correctional or Delaware Correctional Institution, the location file admission and release data on the hard institution was included in the dataset.
  - Excluded from the dataset were Central Violation of Probation, Plummer House or Sussex Halfway House Work Release cases that were not related to a location file *hard* institution admission/release record.

The re-admission analysis file was produced by joining the latest available offender identification (SBI, and demographic information such as name, date of birth, race), DOC admission history (CJIS) and placement data (DYRS facility and contracted III, IV and V programs).

## **Appendix**

### **Historical Recidivism Rates**

The following appendix contains recidivism rates for programs that have not been active since FY02. The programs are grouped by dispositional level.

Historical Recidivism Rates

Display 31, Level V Historical Program Felony Recidivism Rates

Alternative Rehabilitative Community Felony Recidivism Rates

Time Period	N. Released	Months Since Release			
		6 Months	12 Months	18 Months	24 Months
FY 95	1	0%	0%	0%	100%
FY 96	3	67%	67%	67%	67%
FY 98	3	100%	100%	100%	100%

A description was not available from DYRS for this program.

Corrections Corporation of America, Liberty County, Felony Recidivism Rates

Time Period	N. Released	Months Since Release			
		6 Months	12 Months	18 Months	24 Months
FY 00	15	40%	87%	93%	93%
FY 01	6	33%	83%	83%	83%

Liberty County provides pre-vocational, strict behavioral modification and on-site educational programming for males 12 to 18 years of age.

Gannondale, Secure, Felony Recidivism Rates

Time Period	N. Released	Months Since Release			
		6 Months	12 Months	18 Months	24 Months
FY 96	2	0%	0%	50%	50%
FY 97	1	0%	0%	0%	0%
FY 99	1	0%	0%	0%	0%
FY 00	1	0%	0%	100%	100%
FY 01	1	0%	0%	0%	0%

Gannondale is a secure program for female offenders.

Rebound, Secure, Felony Recidivism Rates

Time Period	N. Released	Months Since Release			
		6 Months	12 Months	18 Months	24 Months
FY 95	1	0%	0%	0%	0%
FY 96	2	50%	100%	100%	100%

A description was not available from DYRS for this program.

Display 32, Level IV Historical Program Felony Recidivism Rates

Abraxas, Drug Sellers, Felony Recidivism Rates

Time Period	N. Released	Months Since Release			
		6 Months	12 Months	18 Months	24 Months
FY 95	3	33%	67%	67%	100%
FY 96	5	60%	80%	80%	80%

A description was not available from DYRS for this program.

Abraxas, Intensive, Felony Recidivism Rates

Time Period	N. Released	Months Since Release			
		6 Months	12 Months	18 Months	24 Months
FY 95	1	0%	0%	0%	0%

A description was not available from DYRS for this program.

Abraxas, Long Term, Felony Recidivism Rates

Time Period	N. Released	Months Since Release			
		6 Months	12 Months	18 Months	24 Months
FY 95	2	0%	100%	100%	100%
FY 96	8	13%	50%	75%	75%
FY 97	2	50%	100%	100%	100%

A description was not available from DYRS for this program.

Abraxas, Short Term, Felony Recidivism Rates

Time Period	N. Released	Months Since Release			
		6 Months	12 Months	18 Months	24 Months
FY 96	3	33%	33%	67%	67%
FY 99	1	0%	0%	100%	100%

A description was not available from DYRS for this program.

A.R.C., General, Felony Recidivism Rates

Time Period	N. Released	Months Since Release			
		6 Months	12 Months	18 Months	24 Months
FY 95	4	75%	75%	75%	100%
FY 96	15	53%	67%	73%	87%
FY 97	2	0%	0%	0%	50%
FY 98	3	33%	33%	33%	33%

A description was not available from DYRS for this program.

## Historical Recidivism Rates

### A.R.C., Pre-Release, Felony Recidivism Rates

Time Period	N. Released	Months Since Release			
		6 Months	12 Months	18 Months	24 Months
FY 98	1	100%	100%	100%	100%

A description was not available from DYRS for this program.

### A.R.C., Special, Felony Recidivism Rates

Time Period	N. Released	Months Since Release			
		6 Months	12 Months	18 Months	24 Months
FY 95	1	0%	0%	100%	100%

A description was not available from DYRS for this program.

### Benedictine School Felony Recidivism Rates

Time Period	N. Released	Months Since Release			
		6 Months	12 Months	18 Months	24 Months
FY 97	1	0%	0%	0%	0%

A description was not available from DYRS for this program.

### The Bridge, Long Term, Felony Recidivism Rates

Time Period	N. Released	Months Since Release			
		6 Months	12 Months	18 Months	24 Months
FY 95	4	0%	0%	50%	50%
FY 96	5	0%	20%	20%	20%
FY 97	1	100%	100%	100%	100%
FY 98	2	100%	100%	100%	100%
FY 99	6	0%	17%	17%	33%
FY 00	3	0%	33%	33%	33%
FY 01	3	33%	33%	67%	67%
FY 02	2	0%	50%	50%	50%

The Bridge, Long Term, provides alcohol and substance abuse treatment for juveniles between the ages of 14 and 19.

### The Bridge, Short Term, Felony Recidivism Rates

Time Period	N. Released	Months Since Release			
		6 Months	12 Months	18 Months	24 Months
FY 95	8	38%	38%	38%	38%
FY 96	2	50%	50%	50%	50%
FY 98	2	50%	50%	50%	50%
FY 01	1	0%	0%	0%	0%

The Bridge, Short Term, provides alcohol and substance abuse treatment for juveniles between the ages of 14 and 19.



Brown Schools at Laurel Ridge Felony Recidivism Rates

Time Period	N. Released	Months Since Release			
		6 Months	12 Months	18 Months	24 Months
FY 00	1	0%	0%	0%	0%
FY 01	1	0%	0%	0%	100%
FY 02	2	0%	0%	0%	0%

A description was not available from DYRS for this program.

Brown Schools at Shadow Mountain, General, Felony Recidivism Rates

Time Period	N. Released	Months Since Release			
		6 Months	12 Months	18 Months	24 Months
FY 99	1	0%	100%	100%	100%
FY 00	1	0%	0%	0%	0%
FY 01	2	0%	100%	100%	100%

A description was not available from DYRS for this program.

Charter Treatment Felony Recidivism Rates

Time Period	N. Released	Months Since Release			
		6 Months	12 Months	18 Months	24 Months
FY 95	9	44%	56%	56%	56%
FY 96	3	0%	67%	67%	67%

A description was not available from DYRS for this program.

Concern, Treatment Unit, Felony Recidivism Rates

Time Period	N. Released	Months Since Release			
		6 Months	12 Months	18 Months	24 Months
FY 95	2	0%	50%	50%	50%
FY 96	1	0%	0%	0%	0%
FY 97	1	0%	100%	100%	100%

A description was not available from DYRS for this program.

Devereux Felony Recidivism Rates

Time Period	N. Released	Months Since Release			
		6 Months	12 Months	18 Months	24 Months
FY 96	1	100%	100%	100%	100%
FY 97	1	0%	0%	100%	100%
FY 01	1	0%	0%	0%	0%

A description was not available from DYRS for this Department of Education program.

## Historical Recidivism Rates

### Gannondale, General, Felony Recidivism Rates

Time Period	N. Released	Months Since Release			
		6 Months	12 Months	18 Months	24 Months
FY 95	4	0%	0%	0%	0%
FY 96	3	0%	0%	33%	33%
FY 97	2	0%	0%	0%	0%
FY 98	1	0%	0%	0%	0%
FY 99	2	0%	0%	0%	0%
FY 00	1	0%	0%	100%	100%
FY 01	2	0%	0%	0%	0%

Gannondale provides staff secure educational programs, organized athletic competitions, leisure time activities, arts and crafts, and individual and group counseling.

### George Junior Republic, Diagnostic, Felony Recidivism Rates

Time Period	N. Released	Months Since Release			
		6 Months	12 Months	18 Months	24 Months
FY 96	1	0%	0%	100%	100%
FY 01	1	0%	100%	100%	100%

A description was not available from DYRS for this program.

### George Junior Republic, Drug and Alcohol, Felony Recidivism Rates

Time Period	N. Released	Months Since Release			
		6 Months	12 Months	18 Months	24 Months
FY 00	1	0%	0%	0%	0%

A description was not available from DYRS for this program.

### George Junior Republic, General, Felony Recidivism Rates

Time Period	N. Released	Months Since Release			
		6 Months	12 Months	18 Months	24 Months
FY 95	2	50%	100%	100%	100%
FY 96	8	88%	100%	100%	100%
FY 97	2	50%	50%	100%	100%
FY 99	9	33%	44%	44%	56%
FY 00	4	0%	25%	75%	75%
FY 01	7	57%	71%	100%	100%
FY 02	8	75%	88%	100%	100%

George Junior Republic, General, provides a general treatment program for juveniles with step-down Level III Group Home availability.

KidsPeace, Dual Diagnosis Program, Felony Recidivism Rates

Time Period	N. Released	Months Since Release			
		6 Months	12 Months	18 Months	24 Months
FY 99	2	0%	0%	0%	0%

A description was not available from DYRS for this program.

KidsPeace, Intensive, Felony Recidivism Rates

Time Period	N. Released	Months Since Release			
		6 Months	12 Months	18 Months	24 Months
FY 95	1	0%	100%	100%	100%
FY 96	1	0%	0%	0%	0%
FY 97	6	0%	0%	17%	17%
FY 98	2	0%	0%	50%	50%
FY 99	1	0%	0%	0%	0%
FY 01	1	0%	0%	0%	0%
FY 02	1	0%	0%	0%	0%

KidsPeace’s Intensive program provides highly individualized, staff-secure, 24-hour psychiatric care for offenders 6 to 18 years of age requiring intensive clinical, recreational and educational services.

Mille Lacs Academy, Adolescent, Felony Recidivism Rates

Time Period	N. Released	Months Since Release			
		6 Months	12 Months	18 Months	24 Months
FY 95	5	20%	40%	60%	60%
FY 96	6	67%	67%	67%	67%
FY 97	3	67%	67%	67%	67%
FY 98	1	100%	100%	100%	100%

A description was not available from DYRS for this program.

Mille Lacs Academy, Early Adolescent, Felony Recidivism Rates

Time Period	N. Released	Months Since Release			
		6 Months	12 Months	18 Months	24 Months
FY 97	1	0%	0%	0%	0%

A description was not available from DYRS for this program.

National Center Institute and Alternatives Felony Recidivism Rates

Time Period	N. Released	Months Since Release			
		6 Months	12 Months	18 Months	24 Months
FY 96	1	0%	0%	0%	100%
FY 99	1	0%	0%	0%	0%

A description was not available from DYRS for this program.

Historical Recidivism Rates

New Hope Treatment Centers, Crisis Program Felony Recidivism Rates

Time Period	N. Released	Months Since Release			
		6 Months	12 Months	18 Months	24 Months
FY 00	1	100%	100%	100%	100%

New Hope Treatment Centers' Crisis Program provides psychiatric crisis stabilization services to emotionally disturbed children and adolescents 9 to 18 years of age.

Pathways Felony Recidivism Rates

Time Period	N. Released	Months Since Release			
		6 Months	12 Months	18 Months	24 Months
FY 98	7	43%	71%	86%	100%
FY 99	2	0%	0%	50%	50%
FY 00	1	0%	0%	0%	0%

Pathways provides substance abuse counseling, individual and group therapy for juveniles between the ages of 12 and 19.

Psychotherapeutic Children's Services,  
Transitional Living Program, Felony Recidivism Rates

Time Period	N. Released	Months Since Release			
		6 Months	12 Months	18 Months	24 Months
FY 95	12	42%	50%	58%	58%
FY 96	13	31%	46%	0%	0%
FY 97	12	33%	42%	58%	58%
FY 98	16	25%	50%	69%	75%
FY 99	1	0%	0%	0%	0%
FY 01	2	0%	50%	50%	50%

A description was not available from DYRS for this program.

Stetson School Felony Recidivism Rates

Time Period	N. Released	Months Since Release			
		6 Months	12 Months	18 Months	24 Months
FY 98	1	0%	0%	100%	100%
FY 99	1	0%	0%	0%	0%
FY 00	1	0%	0%	0%	100%

A description was not available from DYRS for this program.

Tarkio, General, Felony Recidivism Rates

Time Period	N. Released	Months Since Release			
		6 Months	12 Months	18 Months	24 Months
FY 96	13	38%	54%	69%	69%
FY 97	15	13%	40%	60%	67%
FY 98	11	27%	45%	91%	91%
FY 99	2	50%	50%	50%	100%

A description was not available from DYRS for this program.

Tarkio Academy, Sex Offender, Felony Recidivism Rates

Time Period	N. Released	Months Since Release			
		6 Months	12 Months	18 Months	24 Months
FY 97	3	33%	33%	33%	33%
FY 98	3	0%	33%	67%	67%
FY 99	4	0%	0%	0%	0%

A description was not available from DYRS for this program.

The Terraces, Long Term, Felony Recidivism Rates

Time Period	N. Released	Months Since Release			
		6 Months	12 Months	18 Months	24 Months
FY 96	1	0%	0%	0%	0%
FY 97	23	17%	43%	57%	70%
FY 98	3	67%	67%	100%	100%

A description was not available from DYRS for this program.

The Terraces, Short Term, Felony Recidivism Rates

Time Period	N. Released	Months Since Release			
		6 Months	12 Months	18 Months	24 Months
FY 97	14	21%	57%	57%	71%
FY 98	4	50%	50%	75%	75%

A description was not available from DYRS for this program.

Timber Ridge Felony Recidivism Rates

Time Period	N. Released	Months Since Release			
		6 Months	12 Months	18 Months	24 Months
FY 98	1	0%	0%	0%	0%

A description was not available from DYRS for this Department of Education program.

## Historical Recidivism Rates

### Today Inc., Re-Entry, Felony Recidivism Rates

Time Period	N. Released	Months Since Release			
		6 Months	12 Months	18 Months	24 Months
FY 95	3	33%	33%	33%	33%

A description was not available from DYRS for this program.

### Victor Cullen Felony Recidivism Rates

Time Period	N. Released	Months Since Release			
		6 Months	12 Months	18 Months	24 Months
FY 95	6	33%	67%	67%	67%
FY 96	4	0%	25%	50%	75%

A description was not available from DYRS for this program.

### VisionQuest, New Directions Shelter, Felony Recidivism Rates

Time Period	N. Released	Months Since Release			
		6 Months	12 Months	18 Months	24 Months
FY 97	1	0%	0%	0%	0%
FY 98	105	32%	59%	70%	81%
FY 99	192	36%	60%	69%	73%
FY 00	161	38%	58%	67%	79%
FY 01	76	33%	57%	66%	76%
FY 02	44	27%	48%	66%	70%

VisionQuest's New Directions Shelter provided educational services and shelter care for juveniles on administrative holds and aftercare revocations, or served as an interim placement for males ages 12 to 18 who were detained or incarcerated in a detention center or the Ferris School for Boys awaiting a secure Level IV residential placement.

### The Woods Felony Recidivism Rates

Time Period	N. Released	Months Since Release			
		6 Months	12 Months	18 Months	24 Months
FY 99	1	0%	0%	100%	100%
FY 01	1	0%	0%	0%	0%

A description was not available from DYRS for this Department of Education program.

Display 33, Level III Historical Program Felony Recidivism Rates

A.R.C., Foster Care, Felony Recidivism Rates

Time Period	N. Released	Months Since Release			
		6 Months	12 Months	18 Months	24 Months
FY 96	2	50%	50%	50%	50%
FY 97	1	100%	100%	100%	100%
FY 98	1	0%	0%	0%	0%

A description was not available from DYRS for this program.

Brown Schools at Shadow Mountain, Foster Care, Felony Recidivism Rates

Time Period	N. Released	Months Since Release			
		6 Months	12 Months	18 Months	24 Months
FY 00	1	0%	0%	100%	100%
FY 01	1	0%	100%	100%	100%

A description was not available from DYRS for this program.

Catholic Charities Felony Recidivism Rates

Time Period	N. Released	Months Since Release			
		6 Months	12 Months	18 Months	24 Months
FY 96	4	50%	75%	75%	75%
FY 97	4	0%	0%	0%	0%
FY 98	2	0%	0%	0%	0%
FY 99	1	100%	100%	100%	100%

A description was not available from DYRS for this program.

Children's Choice Felony Recidivism Rates

Time Period	N. Released	Months Since Release			
		6 Months	12 Months	18 Months	24 Months
FY 97	3	0%	0%	0%	0%

A description was not available from DYRS for this program.

Concern, Foster Care, Felony Recidivism Rates

Time Period	N. Released	Months Since Release			
		6 Months	12 Months	18 Months	24 Months
FY 95	3	67%	100%	100%	100%
FY 96	2	0%	50%	50%	50%
FY 97	1	100%	100%	100%	100%

A description was not available from DYRS for this program.

Historical Recidivism Rates

Division of Family Services, Foster Care, Felony Recidivism Rates

Time Period	N. Released	Months Since Release			
		6 Months	12 Months	18 Months	24 Months
FY 97	1	0%	0%	0%	0%
FY 98	1	0%	0%	0%	0%
FY 99	1	0%	0%	0%	0%

A description was not available from DYRS for this program.

Father Flannigan's Boys Home Felony Recidivism Rates

Time Period	N. Released	Months Since Release			
		6 Months	12 Months	18 Months	24 Months
FY 98	1	0%	0%	0%	0%

A description was not available from DYRS for this program.

Home of Divine Providence Felony Recidivism Rates

Time Period	N. Released	Months Since Release			
		6 Months	12 Months	18 Months	24 Months
FY 00	1	0%	0%	0%	0%

A description was not available from DYRS for this program.

Impact, Foster Care, Felony Recidivism Rates

Time Period	N. Released	Months Since Release			
		6 Months	12 Months	18 Months	24 Months
FY 98	1	0%	0%	0%	0%
FY 99	1	0%	0%	0%	0%

A description was not available from DYRS for this program.

Impact, Independent Living, Felony Recidivism Rates

Time Period	N. Released	Months Since Release			
		6 Months	12 Months	18 Months	24 Months
FY 96	1	0%	0%	0%	0%

A description was not available from DYRS for this program.

Learning Experiences, Inc., Felony Recidivism Rates

Time Period	N. Released	Months Since Release			
		6 Months	12 Months	18 Months	24 Months
FY 96	1	0%	0%	0%	0%

A description was not available from DYRS for this program.



MR Respite Care Felony Recidivism Rates

Time Period	N. Released	Months Since Release			
		6 Months	12 Months	18 Months	24 Months
FY 98	1	0%	0%	0%	0%

A description was not available from DYRS for this program.

Northeast Treatment Center Felony Recidivism Rates

Time Period	N. Released	Months Since Release			
		6 Months	12 Months	18 Months	24 Months
FY 97	1	0%	0%	0%	0%
FY 98	1	100%	100%	100%	100%

A description was not available from DYRS for this program.

Seton Villa Felony Recidivism Rates

Time Period	N. Released	Months Since Release			
		6 Months	12 Months	18 Months	24 Months
FY 98	1	0%	0%	0%	0%
FY 99	2	0%	0%	0%	0%

A description was not available from DYRS for this program.

Sisters Reaching for Excellence Felony Recidivism Rates

Time Period	N. Released	Months Since Release			
		6 Months	12 Months	18 Months	24 Months
FY 99	5	0%	40%	40%	40%
FY 00	1	0%	0%	0%	0%

A description was not available from DYRS for this program.

Stepping Stones Felony Recidivism Rates

Time Period	N. Released	Months Since Release			
		6 Months	12 Months	18 Months	24 Months
FY 95	5	20%	20%	20%	20%
FY 96	5	60%	60%	60%	60%
FY 97	13	0%	15%	31%	31%
FY 98	6	33%	50%	50%	50%
FY 99	10	0%	30%	30%	40%
FY 00	3	67%	67%	67%	100%

Stepping Stones provides transitional independent living programming for adjudicated males 16 to 18 years of age.

Intentionally Blank