

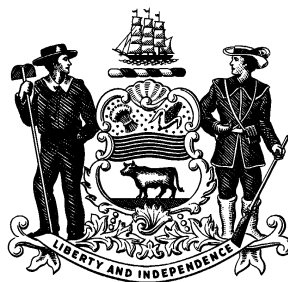
---

# **Delaware Juvenile Recidivism**

---

1994 – 2003 Juvenile  
Level III, IV and V Recidivism Study

November 2003



**State of Delaware**  
**Office of the Budget**  
**Statistical Analysis Center**

Delaware Juvenile Recidivism:  
1994 – 2003 Juvenile Level III, IV and V Recidivism Study.

Prepared by the Statistical Analysis Center, Office of the Budget, State of Delaware.

Authors:  
Jorge Rodríguez-Labarca, Senior Analyst,  
John P. O'Connell, Director.

State of Delaware Document Number: 100208031002.

## Table of Contents

Introduction .....	1
Summary 12 Month Delaware Juvenile Recidivism Rates .....	1
Interpreting Recidivism Results: A Caution .....	2
Different Measures of Re-arrest Recidivism .....	2
Recidivism Summary.....	5
Measuring Recidivism .....	5
FY02 Recidivism Summary .....	7
FY02 12 Month Recidivism Rates.....	7
Residential Level V, IV, and III Felony Recidivism Tables.....	11
Data Sources.....	49
Criminal Justice Information System Data .....	49
Placement Data.....	50
Secure Placement Episodes .....	50
Level III, IV and V Recidivism Study Dataset.....	51
Appendix .....	53
Historical Recidivism Rates.....	53

## Tables of Displays

Level V Displays .....	12
Display 1, Level V Felony Recidivism Rates .....	12
Display 2, Corrections Corporation of America, Shelby Training School Felony Recidivism Rates .....	13
Display 3, Ferris School for Boys Felony Recidivism Rates.....	14
Display 4, New Castle County Detention Center Felony Recidivism Rates .....	15
Display 5, Stevenson House Detention Center Felony Recidivism Rates .....	16
Display 6, Level V Small Program Felony Recidivism Rates.....	17
Level IV Displays .....	19
Display 8, Level IV Felony Recidivism Rates.....	19
Display 9, Chamberlain Academy, General, Felony Recidivism Rates .....	20
Display 10, Chamberlain Academy, High Impact, Felony Recidivism Rates.....	21
Display 11, Clarinda Academy Felony Recidivism Rates .....	22
Display 12, Glen Mills Schools Felony Recidivism Rates .....	23
Display 13, Grace Cottage, Long Term, Felony Recidivism Rates.....	24
Display 14, Grace Cottage, Shelter Services, Felony Recidivism Rates .....	25
Display 15, Grace Cottage, Short Term, Felony Recidivism Rates.....	26
Display 16, Mountain Manor Felony Recidivism Rates.....	27
Display 17, Mowlds Cottage Felony Recidivism Rates .....	28
Display 18, Snowden Cottage Felony Recidivism Rates.....	29
Display 19, Springfield Academy Felony Recidivism Rates.....	30
Display 20, Today Inc., General, Felony Recidivism Rates.....	31
Display 21, VisionQuest, Boot Camp, Felony Recidivism Rates.....	32
Display 22, VisionQuest, New Directions Shelter, Felony Recidivism Rates .....	33
Display 23, VisionQuest, Madalyn Program, Felony Recidivism Rates .....	34
Display 24, VisionQuest, Quest, Felony Recidivism Rates.....	35
Display 25, Level IV Small Program Felony Recidivism Rates.....	36

Level III Displays.....	45
Display 26, Level III Residential Felony Recidivism Rates.....	45
Display 27, Camelot, General, Felony Recidivism Rates .....	46
Display 28, People’s Place II Felony Recidivism Rates.....	47
Display 29, Level III Small Program Felony Recidivism Rates.....	48
Historical Recidivism Displays.....	53
Display 31, Level V Historical Program Felony Recidivism Rates .....	53
Display 32, Level IV Historical Program Felony Recidivism Rates.....	54
Display 33, Level III Historical Program Felony Recidivism Rates .....	60

## **Tables of Graphs**

Graph 1, FY02 Re-arrest Recidivism 1 Year Following Level V Release.....	4
Graph 2, FY02 Re-arrest Recidivism 1 Year Following Level IV Release .....	4
Graph 3, FY02 Re-arrest Recidivism 1 Year Following Level III Release.....	4

## **Tables of Tables**

Table 1, Delaware 12 Month Juvenile Recidivism Rates: A Comparison of Misdemeanor-Felony and Felony Arrest Analysis.....	6
Table 2, Delaware 12 Month Juvenile Arrest Rates: A Comparison of Misdemeanor-Felony and Felony Arrest Analysis.....	6
Table 3, Youth Arrested within 12 Months of Release from a Level V Episode, FY02 Releases.....	7
Table 4, Youth Arrested within 12 Months of Release from a Level IV Episode, FY02 Releases .....	8
Table 5, Youth Arrested within 12 Months of Release from a Level III Episode, FY02 Releases.....	9
Table 6, Level V Felony Recidivism Rates.....	11

Intentionally Blank

## Introduction

This study provides comprehensive recidivism rates for juvenile offenders released from residential placements in the Department of Services for Children, Youth and Their Families (DSCYF) Division of Youth Rehabilitative Services (DYRS) between 1994 and 2003. There are two major levels of security related to out-of-home residential placements: secure and non-secure. Under Delaware's Dispositional Guidelines for Juveniles, youth are sentenced to different program levels. The program levels reflect a graduated approach that requires increasingly intensive programming according to risk and need assessments of each juvenile. The more intensive programming corresponds to secure placements, the less intensive to non-secure placements. Level V, the most intensive programming available, is comprised of locked secure institutional settings like the Ferris School for Boys. Level IV placements are staff secure programs. Level III programs, although residential programs, operate in non-secure settings. Many of the placements are provided via contracted private organizations both in Delaware and out-of-state. Recidivism rates and detailed juvenile offender profiles are provided for 98 separate institutions and public and private residential programs.

The measure of recidivism used in this study is a Delaware felony re-arrest – not a conviction – following release from a placement. Recidivism rates are reported for four different at-risk intervals: 6, 12, 18, and 24 months. Many juvenile recidivism studies report truncated results because they stop following the juveniles once they reach the age of majority. This study does not truncate results because Delaware arrests can be tracked through an offender's adult years.

### Summary 12 Month Delaware Juvenile Recidivism Rates

Juveniles were tracked for at least 12 months after their release from 3,559 Level V placement episodes<sup>1</sup>. Between FY95 (the State's fiscal year runs from July to June) and FY02 (the last year that a full cohort of releases could be studied for being at-risk for 12 months,) the recidivism rate has decreased from 58 percent for youth released during FY95 to 44 percent for those released in FY02. The average length of stay in a Level V secure setting increased slightly during the same time period from 3.1 to 3.5 months. See page 12 for more details on Level V recidivism rates.

Juveniles were tracked for at least 12 months after their release from 3,440 Level IV placement episodes. Excluding an increase in the recidivism rate between FY95 and FY96, the recidivism rate decreased from 54 percent in FY96 to 40 percent in FY02. The average length of stay in a Level IV secure setting decreased during this time period from 6.9 to 3.3 months. See page 19 for more details on Level IV recidivism rates.

Juveniles were tracked for at least 12 months after their release from 554 Level III placement episodes. Excluding an increase in the recidivism rate between FY97 and FY00, the

---

<sup>1</sup> See the explanations of placement episodes on pages 5 and 50 of this document.

recidivism rate has decreased from 35 percent in FY96 to 31 percent in FY02. The average length of stay in a Level III non-secure setting decreased during this time period from 9.6 to 3.1 months. See page 45 for more details on Level III recidivism rates.

Due to a methodological change in the way that adjudicated juveniles held in a detention center are counted (direct adjudicated commitments from Family Court and juveniles held in a detention center more than 10 days after their adjudication) and the use of the latest available placement data information for each edition of this report, the release counts, felony recidivism rates, and historical profiles presented in this document are not comparable to information presented in previous reports. See page 51 for a detailed explanation of how the dataset was constructed for this study.

### Interpreting Recidivism Results: A Caution

Interpretations of the recidivism results in this study can be made for general types of programs like Level V or Level IV and for a specific program over time. Caution, however, should be exercised when comparing a specific program with another. It might be assumed that all Level IV programs are similar and therefore comparable in terms of recidivism.

Whereas this may be true for some programs, it may not be for others. For instance, a Level IV shelter where juveniles are held for two or three weeks awaiting placement is not the same as a one year, or even a three month, Level IV program that provides extensive counseling. Juvenile programs also differ significantly in the type of offender they are willing to serve: not all programs are geared toward providing services to youth with multiple unsuccessful prior placements, some prefer instead to service offenders without prior placements.

It is also important to realize that youth with more extensive criminal histories are more likely to have higher recidivism rates. Prior criminal history patterns differ significantly from program to program. Fortunately, this study provides length of stay and prior criminal history summaries for each program. The historical profiles provided in this report should be helpful in framing discussions regarding juvenile recidivism.

### Different Measures of Re-arrest Recidivism

Measuring recidivism as a re-arrest or a reconviction is an important research and policy issue. It is preferable to measure recidivism using multiple measures where re-arrest highlights public safety risks to the community, re-detention underscores the court's willingness to remove a juvenile arrestee from the community, at least temporarily, and re-conviction would highlight the Family Court's affirmation of guilt for a new crime.

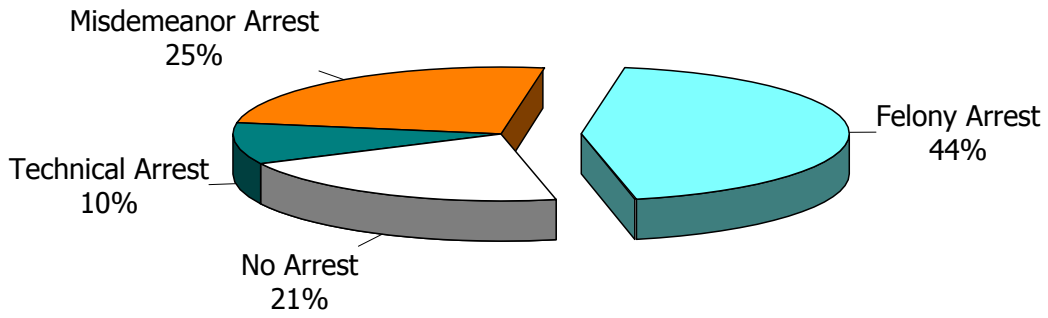
This study, at the request of policy makers in October 1998, assesses DYRS recidivism in terms of felony re-arrest. This, it is believed, provides the possibility for a *fairer* cross jurisdictional comparison of recidivism rates. Re-detention information, although not used as an explicit recidivism measure, is reported as a part of the *offender profile* in this study. That is, the reader can compare the relationship between the average number of prior detention episodes for a specific release cohort and that cohort's felony re-arrest rate. No information is provided in this report regarding re-conviction because the data systems are not systematically



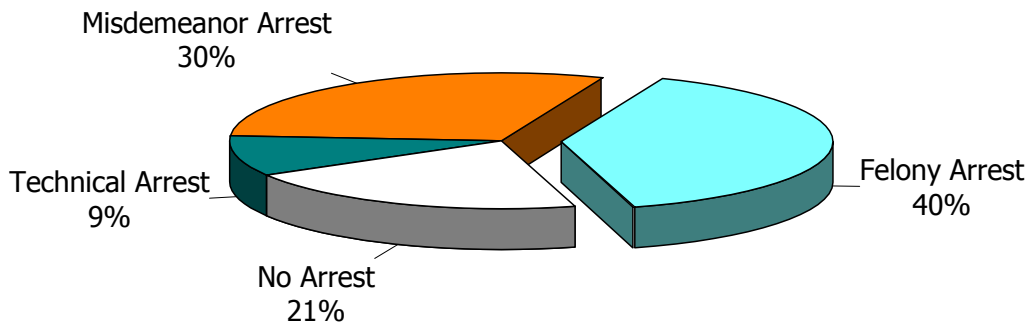
capable of providing this information. While the major purpose of this report is to provide felony re-arrest recidivism rates for the 14,690 release events between July 1994 and December 2002 for all DYRS Level III residential (IIR), Level IV and Level V programs and institutions, re-arrest information is also collected for misdemeanors and technical or administrative measures. This more extensive arrest information provides valuable background information regarding juvenile crime patterns after release from DYRS programs and institutions.

The pie charts below show FY02 re-arrest recidivism rates for released juveniles at-risk at least 12 months. The first graph shows the recidivism patterns for the 511 releases from a Level V placement episode. The second graph shows the recidivism patterns for the 630 releases from a Level IV placement episode. The third graph shows the recidivism patterns for the 133 releases from a Level III placement episode. Three different types of recidivism are displayed in each of these graphs: (1) Recidivism where a felony arrest constitutes the most serious criminal activity after release, and (2) where a misdemeanor arrest constitutes the most serious criminal event, and (3) technical violation arrest.

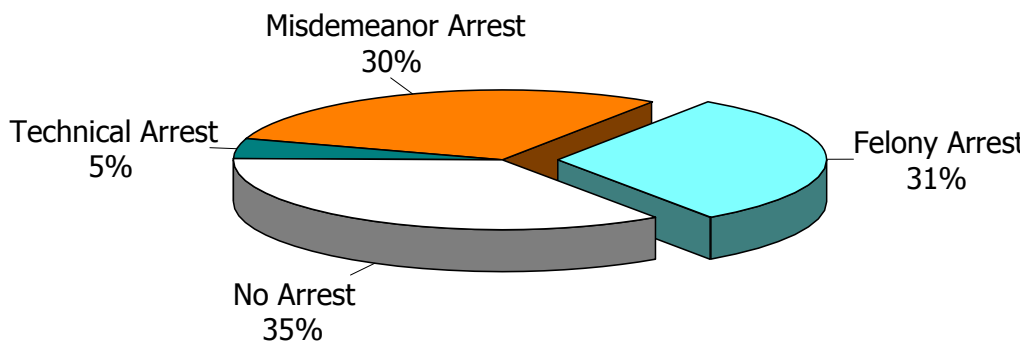
Graph 1, FY02 Re-arrest Recidivism 1 Year Following Level V Release



Graph 2, FY02 Re-arrest Recidivism 1 Year Following Level IV Release



Graph 3, FY02 Re-arrest Recidivism 1 Year Following Level III Release



## Recidivism Summary

This report details the seventh series of analysis on the repeat criminality, or *recidivism*, of juveniles released from residential programs administered by DYRS. The FY04 Budget Act, 74 Del. Laws c. 68 § 50, charges the Delaware Statistical Analysis Center (SAC) with preparing this report.

DYRS administers a continuum of services for pre-adjudicated and adjudicated delinquent juveniles. Part of this continuum includes residential group care through secure programming for adjudicated youth. Level IV staff secure programs provide 24 hour supervision and general, diagnostic, substance abuse and sex offender treatment. Level V locked secure programs are the most restrictive and provide 24 hour supervision in a locked setting. The continuum also includes intensive non-secure programming that is delivered through Level III placements.

### Measuring Recidivism

In this study, recidivism is defined as a new felony arrest in Delaware. Recidivism is measured when a youth is arrested for a felony in Delaware after being released from a DYRS Level III, IV or V placement episode. Recidivism is reported as the percentage of persons released who are re-arrested following release. Arrests for technical violations, traffic offenses not related to driving under the influence or motor vehicle theft, and misdemeanors are not included in the remainder of this study.

Traditionally, recidivism is measured from the date of release from an institution or a residential placement. This measure is valid for systems that take youth from the street, incarcerate them, and then release them back to the street. Delaware's juvenile system is much more likely to place the juvenile offender in a series of secure placements before a youth is released to the community. The methodology in this report captures the contiguous and serial institutionalization of a juvenile as a *secure placement episode*.

Secure placement episodes comprise an uninterrupted period of time when a youth is not in the community and may include multiple releases from secure residential placements. For example, the typical Ferris School for Boys placement episode includes three contiguous placements: (1) admission to the Detention Center, (2) admission to the Ferris School, and (3) transition back to the community through Mowlds Cottage. The at-risk period for the juvenile who had a typical Ferris School for Boys placement episode does not start until the juvenile has been released from Mowlds Cottage and is no longer in secure supervision. In this study, the post-release *at-risk* period starts when a juvenile is released to the community.

Table 1, below, shows the difference in 12 month recidivism rates for Level IV and Level V release cohorts by fiscal year since FY98. On average, over the past five year period the felony re-arrest rate is 29 percentage points lower than the combined misdemeanor-felony recidivism rate for Level IV and 27 percentage points lower than Level V programs.

**Table 1, Delaware 12 Month Juvenile Recidivism Rates:  
A Comparison of Misdemeanor-Felony and Felony Arrest Analysis**

Level Release Cohort	Misdemeanor-Felony Analysis			Felony Analysis		
	N. Released	N. Arrested	Rate	N. Released	N. Arrested	Rate
Level IV						
FY 98	500	388	78%	500	242	48%
FY 99	537	412	77%	537	252	47%
FY 00	530	376	71%	530	224	42%
FY 01	523	355	68%	523	210	40%
FY 02	630	436	69%	630	249	40%
5 Year Summary	2,720	1,967	72%	2,720	1,177	43%
Level V						
FY 98	367	277	75%	367	163	44%
FY 99	399	292	74%	399	186	47%
FY 00	475	334	70%	475	202	43%
FY 01	518	359	69%	518	222	43%
FY 02	511	353	69%	511	226	44%
5 Year Summary	2,264	1,615	71%	2,264	999	44%

Note: Analysis excludes arrests for municipal ordinances, traffic offenses and technical violations.

Table 2, below, shows the difference in the frequency of re-arrest for Level IV and Level V release cohorts by fiscal year since 1998. On average, over the past five years the number of arrests per release event is 0.8 lower for Level IV and 1.0 for Level V when felony re-arrest patterns are compared to misdemeanor-plus-felony arrests.

**Table 2, Delaware 12 Month Juvenile Arrest Rates:  
A Comparison of Misdemeanor-Felony and Felony Arrest Analysis**

Level Release Cohort	Misdemeanor-Felony Analysis			Felony Analysis		
	N. Arrested	N. Arrests	Rate	N. Arrested	N. Arrests	Rate
Level IV						
FY 98	388	1,088	2.8	242	423	1.7
FY 99	412	1,041	2.5	252	423	1.7
FY 00	376	967	2.6	224	415	1.9
FY 01	355	881	2.5	210	350	1.7
FY 02	436	964	2.2	249	342	1.4
5 Year Summary	1,967	4,941	2.5	1,177	1,953	1.7
Level V						
FY 98	277	836	3.0	163	297	1.8
FY 99	292	792	2.7	186	315	1.7
FY 00	334	864	2.6	202	331	1.6
FY 01	359	912	2.5	222	364	1.6
FY 02	353	791	2.2	226	327	1.4
5 Year Summary	1,615	4,195	2.6	999	1,634	1.6

Note: Analysis excludes arrests for municipal ordinances, traffic offenses and technical violations.

## FY02 Recidivism Summary

The tables below – Tables 3, 4, and 5 – provide the FY02 felony re-arrest and summary by level of sanction and by individual programs within each level. Recidivism is reported at one year at risk after release from the secure placement episode. These recidivism results are the most recent available because a full year must pass before recidivism statistics can be calculated for a cohort.

## FY02 12 Month Recidivism Rates

The Level V FY02 release cohort recidivism rate at 12 months at-risk for a felony arrest is 44 percent. The following table shows the FY02 12 month recidivism rate for Level V programs.

Table 3, Youth Arrested within  
12 Months of Release from a Level V Episode, FY02 Releases

Program	No. Released	No. Arrested	Recidivism Rate
New Castle County Detention Center, DE	270	121	45%
Stevenson House Detention Center, DE	182	72	40%
The Ferris School for Boys, DE	122 <sup>2</sup>	66	54%
C.C.A., Shelby Training Center, TN	16	12	75%
C.C.A., South West Indiana Youth Village, Secure, IN	2	1	50%
C.C.A., South West Indiana Youth Village, Drug and Alcohol, IN	1	0	0%
Level V Episodes <sup>3</sup>	511	226	44%

<sup>2</sup> A total of 124 releases occurred during FY02 for the Ferris School. However, two juveniles died within six months of their release from Ferris School. The recidivism rates presented in this analysis are based on the number of juveniles alive at the end of each at-risk period.

<sup>3</sup> Please note that secure placement episode statistics within a level are not additive because a Level V episode may include admissions to more than one Level V program, and double counting would occur if an attempt was made to sum to a Level V total.

The Level IV FY02 release cohort recidivism rate for a felony arrest is 40 percent. The following table shows the FY02 12 month recidivism rate for Level IV programs.

**Table 4, Youth Arrested within  
12 Months of Release from a Level IV Episode, FY02 Releases**

Program	No. Released	No. Arrested	Recidivism Rate
Snowden Cottage, DE	196	89	45%
VisionQuest, Boot Camp, PA	102	47	46%
Mowlds Cottage, DE	47	21	45%
VisionQuest, New Directions Shelter, PA	44	21	48%
F.C.C., Grace Cottage, Long Term, DE	32	4	13%
VisionQuest, Quest, PA	30	8	27%
F.C.C., Grace Cottage, Shelter, DE	28	0	0%
F.C.C., Grace Cottage, Short Term, DE	25	4	16%
Chamberlain Academy, General, SD	19	6	32%
Springfield Academy, SD	16	12	75%
Today Inc., General, PA	16	6	38%
Mountain Manor, MD	15	6	40%
Clarinda Academy, IA	13	5	38%
VisionQuest, Madalyn Program, PA	12	2	17%
Chamberlain Academy, High Impact, SD	10	4	40%
Excelsior, General, CO	9	0	0%
George Junior Republic, General, PA	8	7	88%
The Pines, Behavioral Program, VA	8	1	13%
The Pines, The Phoenix Program, TN	6	3	50%
Diversified Treatment Alternatives, PA	5	2	40%
New Hope, Triad Program, SC	4	0	0%
New Hope, Way Point Program, SC	4	1	25%
Au Clair School, General, DE	3	1	33%
Bowling Brook Preparatory School, MD	3	2	67%
George Junior Republic, Special, PA	3	3	100%
Hennepin County Home School, MN	3	0	0%
KidsPeace, Diagnostic, PA	3	0	0%
Brown Schools at Laurel Ridge, TX	2	0	0%
The Bridge, Long Term, PA	2	1	50%
New Hope, Palmetto Point, SC	2	0	0%
New Hope, Starting Pointe, SC	2	0	0%
The Pines, Young Men/Women's Center, VA	2	1	50%
Riverside Treatment Services, Inc., D.C.	2	1	50%
KidsPeace, Intensive, PA	1	0	0%
New Hope, New Horizons Program, SC	1	0	0%
The Pines, The Cottage Program, VA	1	0	0%
Level IV Episodes	630	249	40%

The Level III FY02 release cohort recidivism rate at 12 months at-risk for a felony arrest is 31 percent. The following table shows the FY02 12 month recidivism rate for Level III programs.

Table 5, Youth Arrested within  
12 Months of Release from a Level III Episode, FY02 Releases

Program	No. Released	No. Arrested	Recidivism Rate
People's Place II, DE	112	30	27%
Camelot, General, DE	17	9	53%
Child, Inc., General, DE	2	1	50%
YWCA, Weekly, DE	2	1	50%
Level III Episodes	133	41	31%

Intentionally Blank



## Residential Level V, IV, and III Felony Recidivism Tables

The following pages show felony recidivism rates for residential Level V, IV, and III total and selected programs in the study.

Recidivism rate tables and graphs are shown for programs that released more than 9 juveniles during fiscal years 2001, 2002 or 2003. Only recidivism rate tables are shown for small programs – programs that released less than 10 juveniles in a fiscal year.

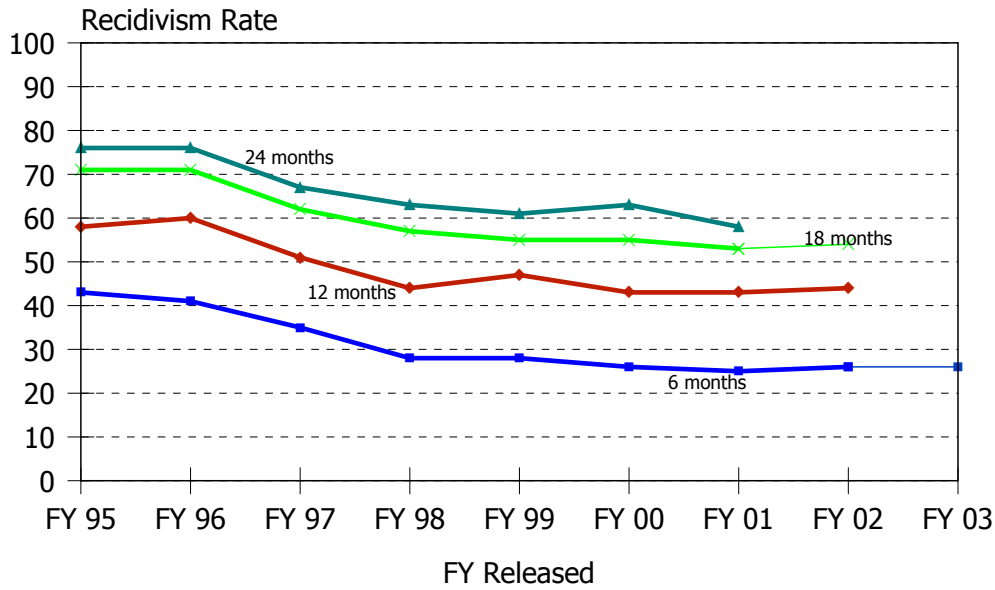
Felony recidivism rates are presented in the following pages for four release thresholds: six, 12, 18, and 24 months since release. As the last releases for FY 01 occurred during June, 2001, all youth in the FY01 cohort had been released at least 24 months. All youth in the FY02 cohort had been released for at least 12 months. All youth in the first half of the FY03 cohort had been released for at least 6 months on July 2, 2003.

The table below provides an explanation of how to read the remaining recidivism tables on this document. The table shows that it has been at least 12 months since all 511 youth in the FY 02 Level V cohort were released. The table also shows, through the use of shading, that not all youth in that cohort had been through the 18 month threshold.

Table 6, Level V Felony Recidivism Rates

Time Period	N. Released	Months Since Release			
		6 Months	12 Months	18 Months	24 Months
FY 95	360	43%	58%	71%	76%
FY 96	485	41%	60%	71%	76%
FY 97	444	35%	51%	62%	67%
FY 98	367	28%	44%	57%	63%
FY 99	399	28%	47%	55%	61%
FY 00	475	26%	43%	55%	63%
FY 01	518	25%	43%	53%	58%
FY 02	511	26%	44%	54%	.
FY 03 1 <sup>st</sup> Half	256	26%	.	.	.

Display 1, Level V Felony Recidivism Rates



Level V Felony Recidivism Rates

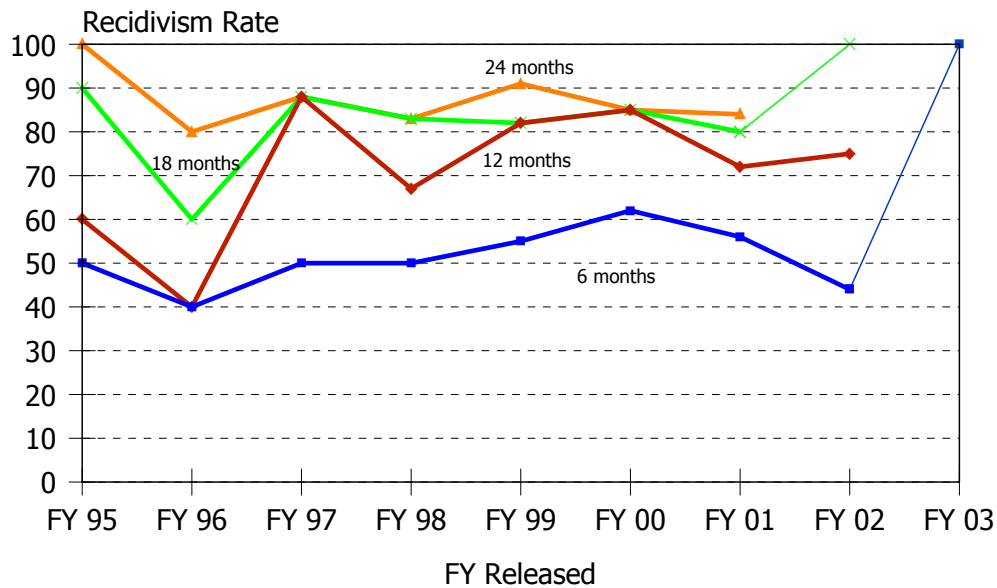
Time Period	N. Released	Months Since Release			
		6 Months	12 Months	18 Months	24 Months
FY 95	360	43%	58%	71%	76%
FY 96	485	41%	60%	71%	76%
FY 97	444	35%	51%	62%	67%
FY 98	367	28%	44%	57%	63%
FY 99	399	28%	47%	55%	61%
FY 00	475	26%	43%	55%	63%
FY 01	518	25%	43%	53%	58%
FY 02	511	26%	44%	54%	.
FY 03 1 <sup>st</sup> Half	256	26%	.	.	.

Note: Shading indicates that a complete cohort has not been at-risk for the full *threshold* time period.

Historical Profile of Youth Released by Fiscal Year

Average	Total	Fiscal Year Released									
		95	96	97	98	99	00	01	02	03	
Level V LOS in months	3.8	3.1	3.1	3.8	3.4	4.5	4.5	3.9	3.9	3.5	
Placement episode LOS in months	7.0	4.5	5.8	6.9	7.4	9.1	7.5	7.7	7.3	6.5	
Number of prior detention admissions	2.1	1.6	1.9	2.2	2.1	2.1	2.3	2.1	2.3	2.4	
No. of prior incarceration admissions	2.0	1.2	1.5	1.7	1.9	2.2	2.4	2.5	2.4	2.1	
Number of prior felony arrests	2.9	3.8	3.7	3.5	2.8	2.8	2.5	2.4	2.1	2.2	
Number of prior arrests	7.6	8.6	8.8	8.6	7.5	7.4	6.9	6.8	7.2	7.1	

Display 2, Corrections Corporation of America,  
Shelby Training School Felony Recidivism Rates



Time Period	N. Released	Months Since Release			
		6 Months	12 Months	18 Months	24 Months
FY 95	10	50%	60%	90%	100%
FY 96	5	40%	40%	60%	80%
FY 97	8	50%	88%	88%	88%
FY 98	12	50%	67%	83%	83%
FY 99	11	55%	82%	82%	91%
FY 00	13	62%	85%	85%	85%
FY 01	25	56%	72%	80%	84%
FY 02	16	44%	75%	100%	.
FY 03 1 <sup>st</sup> Half	2	100%	.	.	.

Historical Profile of Youth Released by Fiscal Year

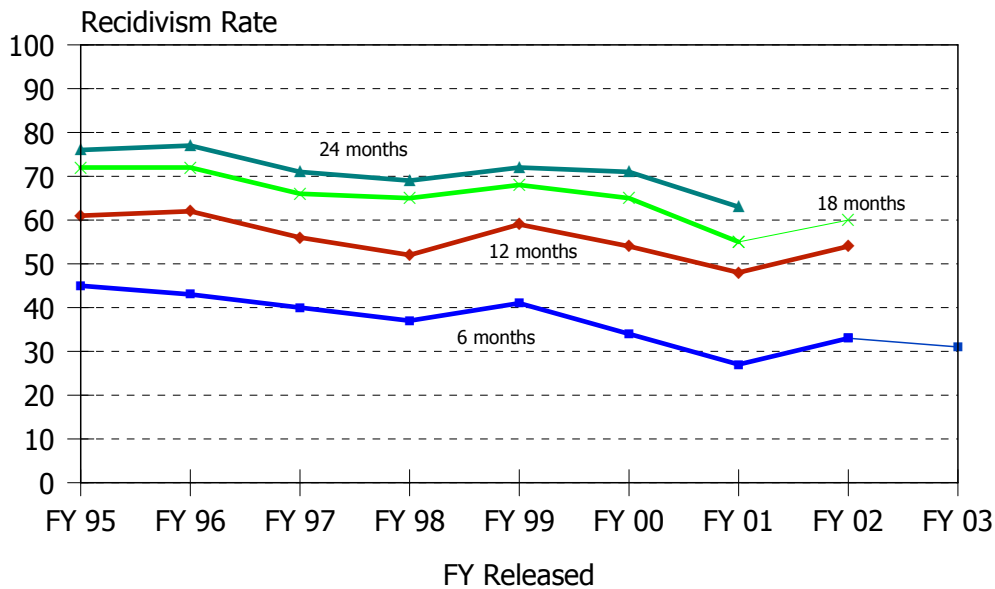
Average	Total	Fiscal Year Released									
		95	96	97	98	99	00	01	02	03	
Shelby LOS in months	6.2	8.6	8.0	8.2	6.4	6.2	6.4	5.5	4.1	3.4	
Placement episode LOS in months	9.4	10.7	12.5	16.0	10.8	12.7	9.9	7.0	5.1	5.6	
Number of prior detention admissions	3.2	2.4	2.6	2.8	4.1	2.7	3.3	2.9	3.8	4.5	
No. of prior incarceration admissions	4.9	1.3	5.0	4.5	4.4	4.1	6.1	5.6	5.6	9.0	
Number of prior felony arrests	4.3	4.9	7.6	5.1	4.0	3.5	5.3	3.8	3.0	3.5	
Number of prior arrests	10.6	12.4	12.2	14.0	11.6	7.9	10.1	9.2	10.3	15.0	

Shelby Training School provides pre-vocational, on-site educational, and zero tolerance behavioral programming for males 12 to 18 years of age.<sup>4</sup>

<sup>4</sup> The program descriptions contained in this document were provided by DYRS.

Level V Recidivism Rates

Display 3, Ferris School for Boys Felony Recidivism Rates



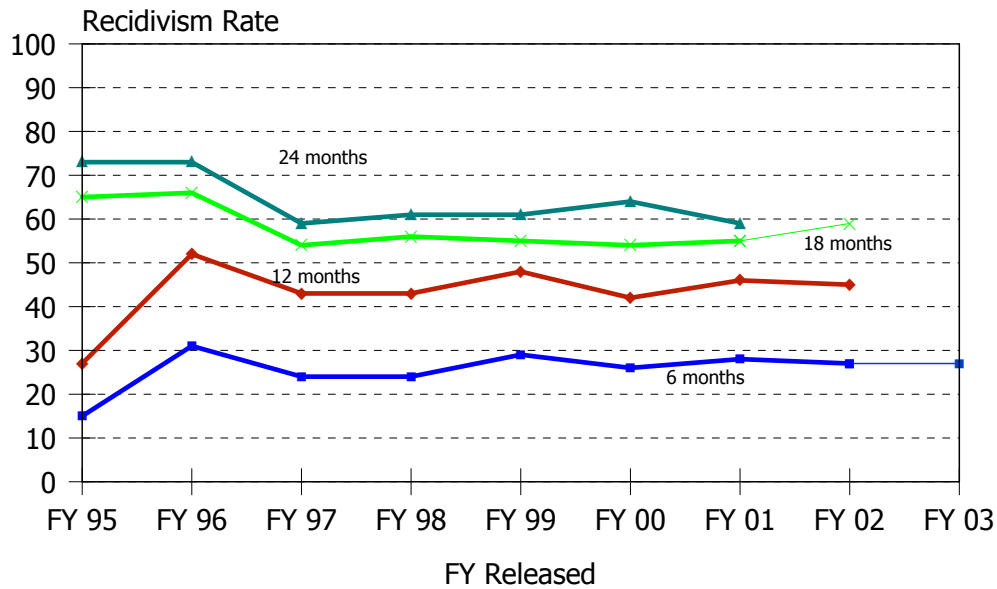
Time Period	N. Released	Months Since Release			
		6 Months	12 Months	18 Months	24 Months
FY 95	324	45%	61%	72%	76%
FY 96	410	43%	62%	72%	77%
FY 97	328	40%	56%	66%	71%
FY 98	130	37%	52%	65%	69%
FY 99	98	41%	59%	68%	72%
FY 00	122	34%	54%	65%	71%
FY 01	115	27%	48%	55%	63%
FY 02	122	33%	54%	60%	63%
FY 03 1 <sup>st</sup> Half	61	31%	.	.	.

Historical Profile of Youth Released by Fiscal Year

Average	Total	Fiscal Year Released									
		95	96	97	98	99	00	01	02	03	
Ferris School LOS in months	5.3	2.9	2.9	4.2	5.5	10.9	9.7	8.5	8.6	8.6	
Placement episode LOS in months	7.9	4.6	5.4	6.7	10.2	15.0	11.7	11.9	11.3	10.3	
Number of prior detention admissions	2.1	1.7	2.0	2.4	2.7	2.1	2.4	1.8	2.5	2.6	
No. of prior incarceration admissions	2.2	1.3	1.6	1.9	2.7	3.0	3.2	3.5	2.8	2.9	
Number of prior felony arrests	3.7	4.0	3.9	4.0	4.0	3.8	3.3	3.0	3.2	3.0	
Number of prior arrests	8.8	8.8	9.1	9.5	9.2	9.0	8.2	7.2	8.4	7.9	

The Ferris School for Boys, a DYRS facility, provides programs and services to create a total learning environment for boys.

Display 4, New Castle County Detention Center Felony Recidivism Rates



Time Period	N. Released	Months Since Release			
		6 Months	12 Months	18 Months	24 Months
FY 95	26	15%	27%	65%	73%
FY 96	67	31%	52%	66%	73%
FY 97	87	24%	43%	54%	59%
FY 98	161	24%	43%	56%	61%
FY 99	225	29%	48%	55%	61%
FY 00	291	26%	42%	54%	64%
FY 01	310	28%	46%	55%	59%
FY 02	270	27%	45%	59%	59%
FY 03 1 <sup>st</sup> Half	155	27%	.	.	.

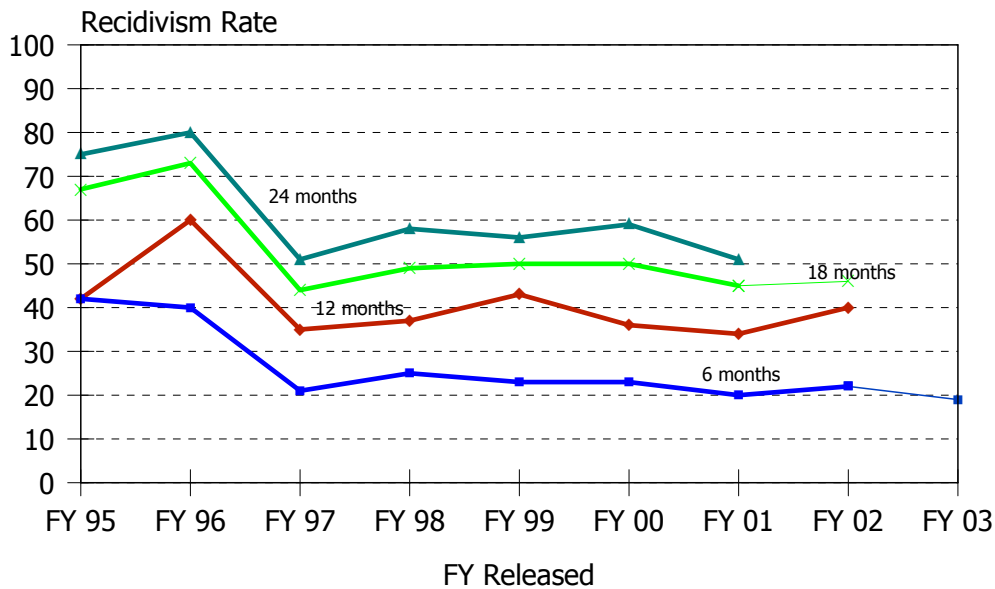
Historical Profile of Youth Released by Fiscal Year

Average	Total	Fiscal Year Released									
		95	96	97	98	99	00	01	02	03	
NCCDC LOS in months	1.9	2.7	2.6	2.3	2.0	2.0	1.8	1.8	1.7	1.6	
Placement episode LOS in months	7.0	4.9	10.4	9.2	7.2	7.9	6.8	7.1	5.9	5.7	
Number of prior detention admissions	2.3	1.7	1.8	1.8	2.1	2.3	2.4	2.3	2.4	2.5	
No. of prior incarceration admissions	2.2	0.7	1.2	1.3	1.9	2.2	2.6	2.6	2.4	2.1	
Number of prior felony arrests	2.4	3.2	2.9	2.6	2.6	2.8	2.5	2.3	1.8	2.0	
Number of prior arrests	6.8	8.0	7.8	6.3	6.4	7.1	6.6	6.7	7.0	6.9	

The New Castle County Detention Center, a DYRS facility, provides health, professional care, professional counseling and educational programming for juveniles. Information presented in this document for this facility relates solely to the adjudicated juveniles held there.

Level V Recidivism Rates

Display 5, Stevenson House Detention Center Felony Recidivism Rates



Time Period	N. Released	Months Since Release			
		6 Months	12 Months	18 Months	24 Months
FY 95	12	42%	42%	67%	75%
FY 96	15	40%	60%	73%	80%
FY 97	43	21%	35%	44%	51%
FY 98	97	25%	37%	49%	58%
FY 99	114	23%	43%	50%	56%
FY 00	143	23%	36%	50%	59%
FY 01	180	20%	34%	45%	51%
FY 02	182	22%	40%	46%	.
FY 03 1 <sup>st</sup> Half	69	19%	.	.	.

Historical Profile of Youth Released by Fiscal Year

Average	Total	Fiscal Year Released									
		95	96	97	98	99	00	01	02	03	
Stevenson House LOS in months	1.6	0.2	0.3	1.0	1.3	1.5	1.8	1.6	2.0	1.7	
Placement episode LOS in months	7.5	0.2	0.3	4.2	4.7	8.3	8.2	8.6	9.2	6.4	
Number of prior detention admissions	1.4	0.9	0.7	1.1	1.2	1.3	1.3	1.4	1.7	1.7	
No. of prior incarceration admissions	2.0	0.3	0.1	0.8	1.4	2.2	1.9	2.4	2.4	2.2	
Number of prior felony arrests	2.0	1.8	0.9	1.6	1.8	2.2	2.1	2.3	1.9	2.0	
Number of prior arrests	6.9	6.4	5.1	6.7	7.3	7.0	6.7	6.7	7.0	7.3	

The Stevenson House Detention Center, a DYRS facility, provides health, professional care, professional counseling and educational programming for juveniles. Information presented in this document for this facility relates solely to the adjudicated juveniles held there.

Display 6, Level V Small Program Felony Recidivism RatesCorrections Corporation of America, Liberty County, Felony Recidivism Rates

Time Period	N. Released	Months Since Release			
		6 Months	12 Months	18 Months	24 Months
FY 00	15	40%	87%	93%	93%
FY 01	6	33%	83%	83%	83%

Liberty County provides pre-vocational, strict behavioral modification and on-site educational programming for males 12 to 18 years of age.

C.C.A., South West Indiana Youth Village,  
Drug and Alcohol Felony Recidivism Rates

Time Period	N. Released	Months Since Release			
		6 Months	12 Months	18 Months	24 Months
FY 99	3	100%	100%	100%	100%
FY 01	4	50%	50%	50%	75%
FY 02	1	0%	0%	.	.
FY 03 1 <sup>st</sup> Half	1	100%	.	.	.

South West Indiana Youth Village provides pre-vocational, educational, strict behavioral modification, and specialized substance abuse programming for males 12 to 18 years of age.

C.C.A., South West Indiana Youth Village, Secure Felony Recidivism Rates

Time Period	N. Released	Months Since Release			
		6 Months	12 Months	18 Months	24 Months
FY 00	4	50%	100%	100%	100%
FY 01	4	50%	50%	50%	50%
FY 02	2	50%	50%	.	.
FY 03 1 <sup>st</sup> Half	1	0%	.	.	.

South West Indiana Youth Village provides secure care and substance abuse treatment program for males 12 to 18 years of age.

Level V Recidivism Rates

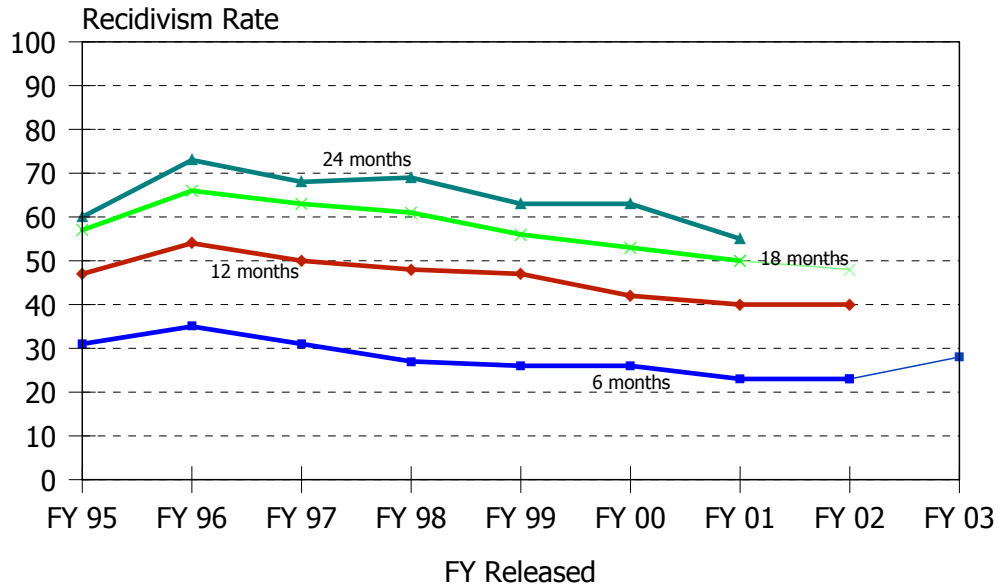
Gannondale, Secure, Felony Recidivism Rates

Time Period	N. Released	Months Since Release			
		6 Months	12 Months	18 Months	24 Months
FY 96	2	0 %	0 %	50%	50%
FY 97	1	0 %	0 %	0 %	0 %
FY 99	1	0 %	0 %	0 %	0 %
FY 00	1	0 %	0 %	100%	100%
FY 01	1	0 %	0 %	0 %	0 %

Gannondale is a secure program for female offenders.



Display 8, Level IV Felony Recidivism Rates



Level IV Felony Recidivism Rates

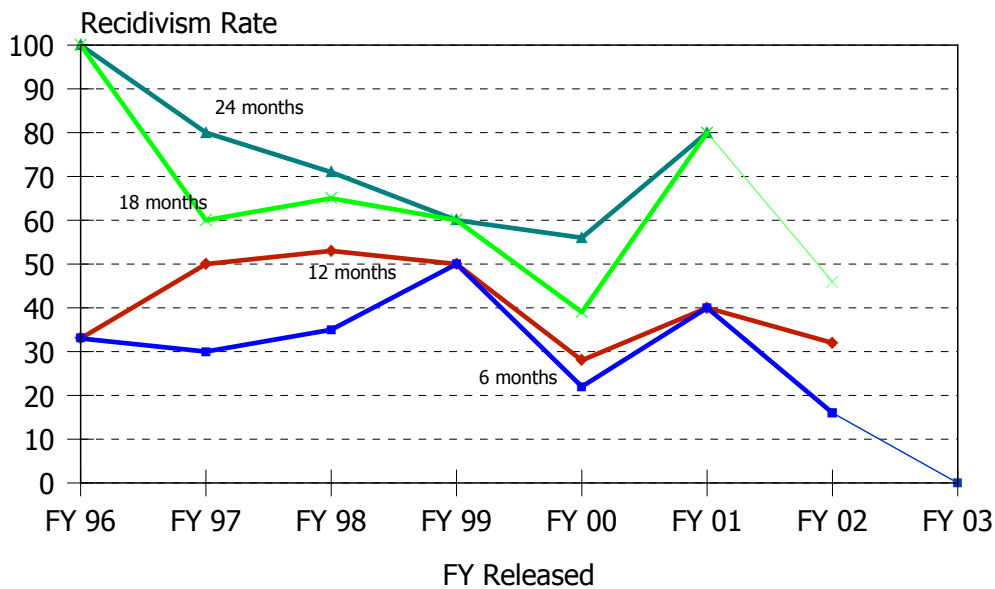
Time Period	N. Released	Months Since Release			
		6 Months	12 Months	18 Months	24 Months
FY 95	154	31%	47%	57%	60%
FY 96	268	35%	54%	66%	73%
FY 97	298	31%	50%	63%	68%
FY 98	500	27%	48%	61%	69%
FY 99	537	26%	47%	56%	63%
FY 00	530	26%	42%	53%	63%
FY 01	523	23%	40%	50%	55%
FY 02	630	23%	40%	48%	55%
FY 03 1 <sup>st</sup> Half	289	28%	40%	48%	55%

Historical Profile of Youth Released by Fiscal Year

Average	Total	Fiscal Year Released									
		95	96	97	98	99	00	01	02	03	
Level IV LOS in months	4.5	6.9	7.0	6.7	4.5	4.4	3.8	4.2	3.3	3.3	
Placement episode LOS in months	6.1	8.7	9.5	8.7	5.9	6.0	5.2	6.0	4.5	4.3	
Number of prior detention admissions	2.2	1.9	1.9	2.1	2.2	2.3	2.3	2.0	2.2	2.3	
No. of prior incarceration admissions	1.8	1.2	1.4	1.5	1.5	2.1	2.1	2.1	1.9	1.8	
Number of prior felony arrests	2.9	3.6	3.8	3.0	2.8	2.9	2.6	2.8	2.9	2.8	
Number of prior arrests	6.6	7.9	8.0	7.1	6.6	6.8	6.2	6.2	6.3	6.7	

Level IV Recidivism Rates

Display 9, Chamberlain Academy, General, Felony Recidivism Rates



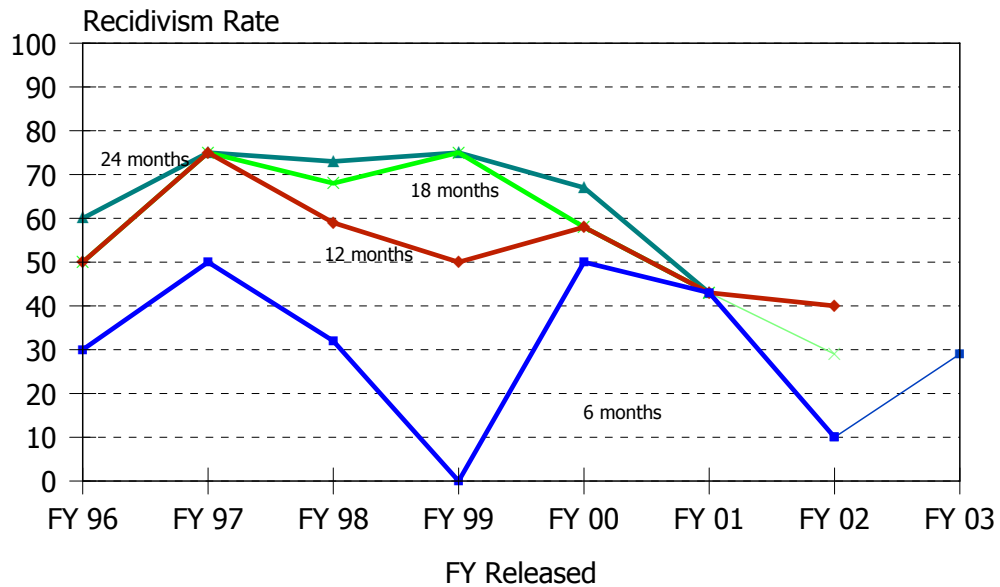
Time Period	N. Released	Months Since Release			
		6 Months	12 Months	18 Months	24 Months
FY 96	3	33%	33%	100%	100%
FY 97	10	30%	50%	60%	80%
FY 98	17	35%	53%	65%	71%
FY 99	10	50%	50%	60%	60%
FY 00	18	22%	28%	39%	56%
FY 01	5	40%	40%	80%	80%
FY 02	19	16%	32%	46%	.
FY 03 1 <sup>st</sup> Half	1	0%	.	.	.

Historical Profile of Youth Released by Fiscal Year

Average	Total	Fiscal Year Released								
		96	97	98	99	00	01	02	03	
Chamberlain Academy LOS in months	7.5	5.7	8.3	8.3	7.5	7.2	6.5	7.0	6.7	
Placement episode LOS in months	9.9	9.9	11.8	10.5	9.2	8.7	8.2	10.4	7.6	
Number of prior detention admissions	2.0	3.3	2.2	2.7	1.8	1.4	3.6	1.3	2.0	
No. of prior incarceration admissions	2.0	1.7	2.5	1.9	0.8	1.4	3.4	2.5	1.0	
Number of prior felony arrests	2.7	4.7	2.4	3.6	2.7	2.7	1.8	2.2	2.0	
Number of prior arrests	6.7	8.7	5.9	7.0	6.9	6.3	8.2	6.6	3.0	

Chamberlain Academy provides short-term coed group programming for juveniles with minimal Court involvement and no other post-adjudication placements.

Display 10, Chamberlain Academy, High Impact, Felony Recidivism Rates



Time Period	N. Released	Months Since Release			
		6 Months	12 Months	18 Months	24 Months
FY 96	10	30%	50%	50%	60%
FY 97	8	50%	75%	75%	75%
FY 98	22	32%	59%	68%	73%
FY 99	4	0%	50%	75%	75%
FY 00	12	50%	58%	58%	67%
FY 01	7	43%	43%	43%	43%
FY 02	10	10%	40%	29%	.
FY 03 1 <sup>st</sup> Half	7	29%	.	.	.

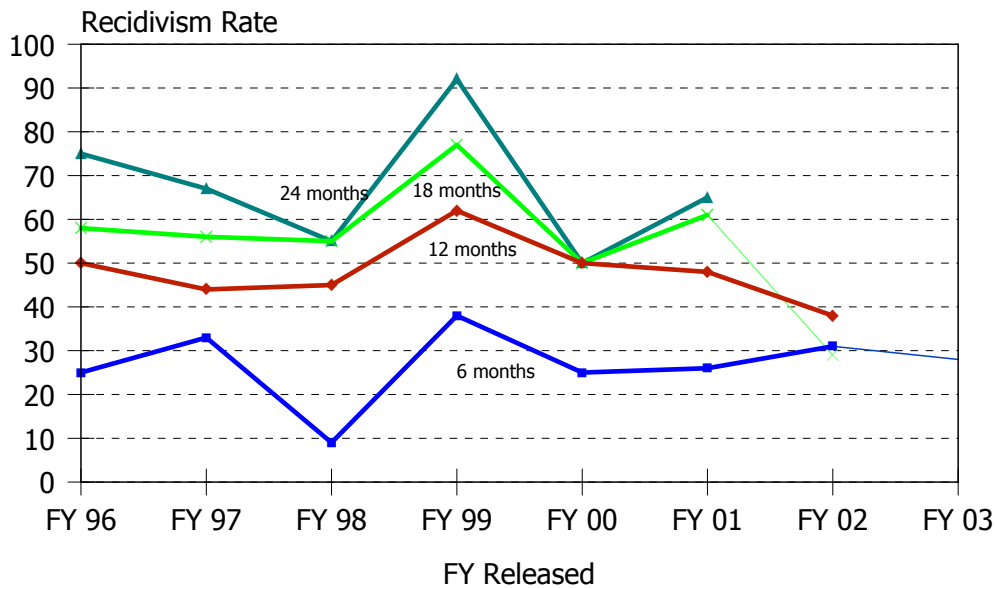
Historical Profile of Youth Released by Fiscal Year

Average	Total	Fiscal Year Released								
		96	97	98	99	00	01	02	03	
Chamberlain Academy LOS in months	5.3	4.3	6.3	6.1	6.4	5.1	4.1	4.7	4.4	
Placement episode LOS in months	7.8	7.7	11.1	7.9	11.9	7.7	6.0	6.6	5.6	
Number of prior detention admissions	1.8	1.2	1.8	2.4	1.8	1.8	1.3	1.7	1.6	
No. of prior incarceration admissions	1.4	0.8	3.0	1.3	1.5	0.8	2.1	1.0	2.1	
Number of prior felony arrests	2.6	2.6	3.3	2.7	2.3	2.6	2.3	2.1	2.3	
Number of prior arrests	7.3	8.5	11.8	6.1	5.3	5.7	7.4	6.7	8.9	

Chamberlain Academy’s High Impact program provides short-term coed group programming for juveniles with minimal Court involvement and few other post-adjudication placements.

Level IV Recidivism Rates

Display 11, Clarinda Academy Felony Recidivism Rates



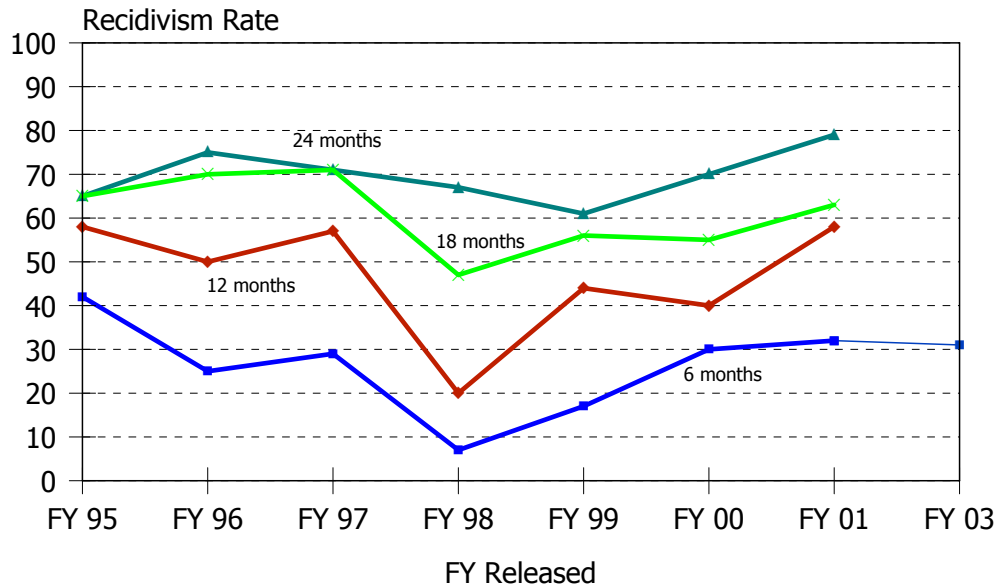
Time Period	N. Released	Months Since Release			
		6 Months	12 Months	18 Months	24 Months
FY 96	12	25%	50%	58%	75%
FY 97	9	33%	44%	56%	67%
FY 98	11	9%	45%	55%	55%
FY 99	13	38%	62%	77%	92%
FY 00	4	25%	50%	50%	50%
FY 01	23	26%	48%	61%	65%
FY 02	13	31%	38%	29%	.
FY 03 1 <sup>st</sup> Half	29	28%	.	.	.

Historical Profile of Youth Released by Fiscal Year

Average	Total	Fiscal Year Released								
		96	97	98	99	00	01	02	03	
Clarinda Academy LOS in months	8.9	10.4	10.6	10.4	10.6	11.3	10.3	8.5	5.0	
Placement episode LOS in months	11.7	12.8	14.0	12.2	13.7	13.8	12.6	15.9	6.5	
Number of prior detention admissions	2.4	2.6	2.0	1.9	1.5	0.8	1.7	2.2	3.7	
No. of prior incarceration admissions	2.1	1.3	3.0	1.9	2.1	0.8	2.4	2.5	2.0	
Number of prior felony arrests	3.2	4.0	3.3	3.3	3.5	3.0	2.3	3.5	3.4	
Number of prior arrests	7.8	9.4	7.4	8.1	6.6	5.3	6.7	7.5	9.0	

Clarinda Academy provides normative culture, chemical abuse counseling, victim awareness and educational programming for males between the ages of 13 and 18.

Display 12, Glen Mills Schools Felony Recidivism Rates



Time Period	N. Released	Months Since Release			
		6 Months	12 Months	18 Months	24 Months
FY 95	26	42%	58%	65%	65%
FY 96	20	25%	50%	70%	75%
FY 97	14	29%	57%	71%	71%
FY 98	15	7%	20%	47%	67%
FY 99	18	17%	44%	56%	61%
FY 00	20	30%	40%	55%	70%
FY 01	19	32%	58%	63%	79%
FY 03 1 <sup>st</sup> Half	13	31%	.	.	.

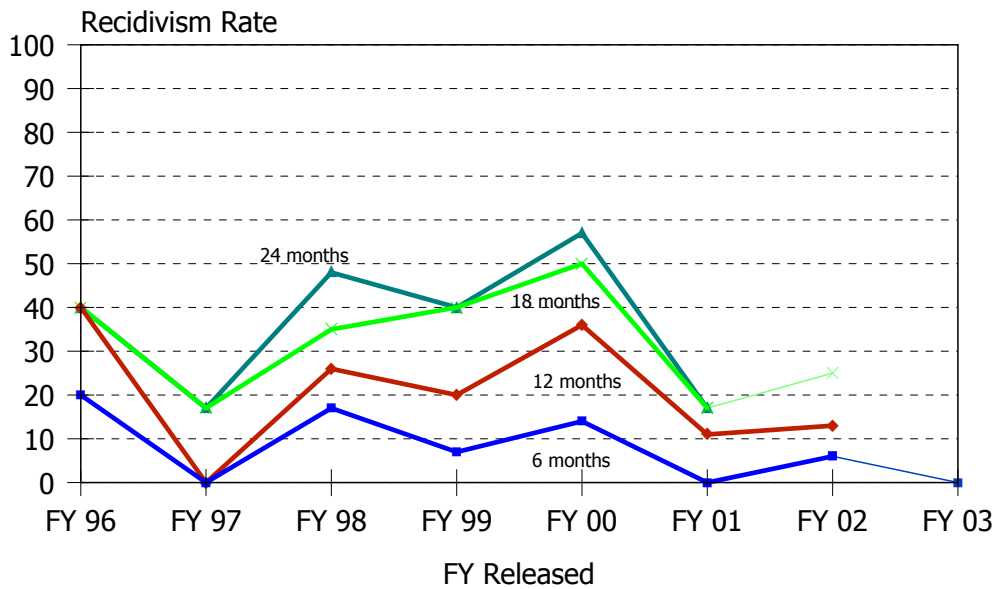
Historical Profile of Youth Released by Fiscal Year

Average	Total	Fiscal Year Released								
		95	96	97	98	99	00	01	03	
Glen Mills Schools LOS in months	11.1	12.0	11.1	12.3	12.4	11.8	11.7	10.8	12.0	
Placement episode LOS in months	13.0	13.2	13.2	14.4	14.6	13.8	13.1	13.6	13.2	
Number of prior detention admissions	2.1	1.7	1.8	1.9	1.9	1.7	3.2	2.3	1.7	
No. of prior incarceration admissions	1.7	1.1	1.3	1.2	1.0	1.9	2.0	2.1	1.1	
Number of prior felony arrests	3.8	4.1	4.6	3.3	2.9	3.9	3.7	3.9	4.1	
Number of prior arrests	7.6	8.1	8.5	7.7	6.7	6.9	7.3	7.6	8.1	

Glen Mills Schools provide normative culture, vocational, athletic and educational programming for males between the ages of 15 and 18. No Delaware juvenile offenders were sent to Glen Mills Schools during FY02.

Level IV Recidivism Rates

Display 13, Grace Cottage, Long Term, Felony Recidivism Rates



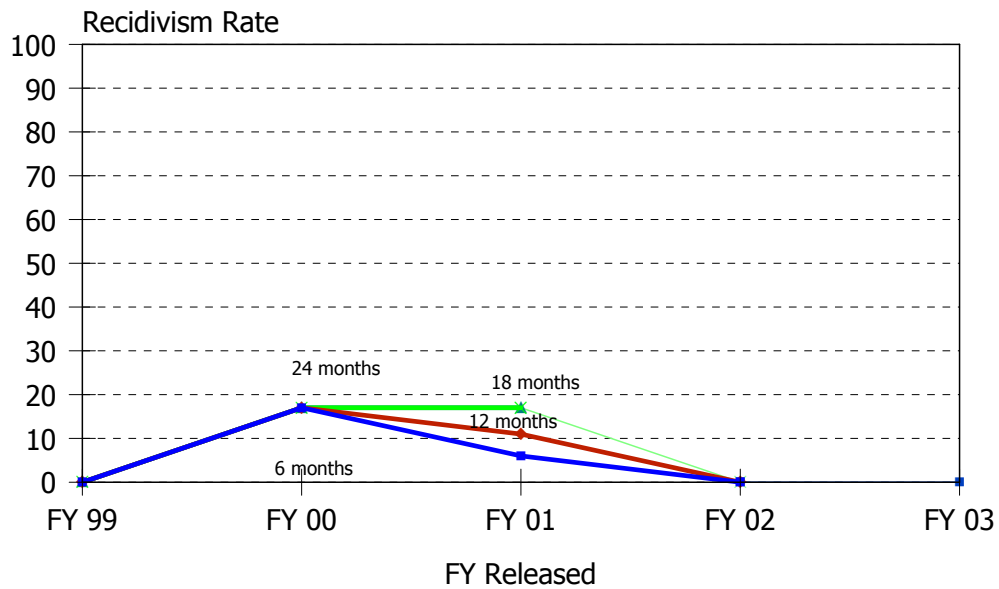
Time Period	N. Released	Months Since Release			
		6 Months	12 Months	18 Months	24 Months
FY 96	5	20%	40%	40%	40%
FY 97	12	0%	0%	17%	17%
FY 98	23	17%	26%	35%	48%
FY 99	15	7%	20%	40%	40%
FY 00	14	14%	36%	50%	57%
FY 01	18	0%	11%	17%	17%
FY 02	32	6%	13%	25%	.
FY 03 1 <sup>st</sup> Half	10	0%	.	.	.

Historical Profile of Youth Released by Fiscal Year

Average	Total	Fiscal Year Released								
		96	97	98	99	00	01	02	03	
Grace Cottage Long LOS in months	5.1	3.1	9.8	6.6	4.9	4.9	5.8	3.0	2.6	
Placement episode LOS in months	8.5	7.0	11.7	9.0	8.2	8.0	8.1	8.5	5.8	
Number of prior detention admissions	2.9	2.4	4.1	2.8	3.9	2.4	2.0	2.8	2.2	
No. of prior incarceration admissions	1.9	1.2	1.0	1.5	2.6	2.1	1.9	2.0	2.1	
Number of prior felony arrests	2.8	2.2	2.9	2.6	3.1	2.1	2.4	3.3	3.1	
Number of prior arrests	6.6	6.6	6.6	7.2	7.5	6.3	5.9	6.1	7.3	

Grace Cottage, Long Term, provides behavior management and educational programming for females between the ages of 13 and 18.

Display 14, Grace Cottage, Shelter Services, Felony Recidivism Rates



Time Period	N. Released	Months Since Release			
		6 Months	12 Months	18 Months	24 Months
FY 99	8	0%	0%	0%	0%
FY 00	6	17%	17%	17%	17%
FY 01	18	6%	11%	17%	17%
FY 02	28	0%	0%	0%	0%
FY 03 1 <sup>st</sup> Half	1	0%	.	.	.

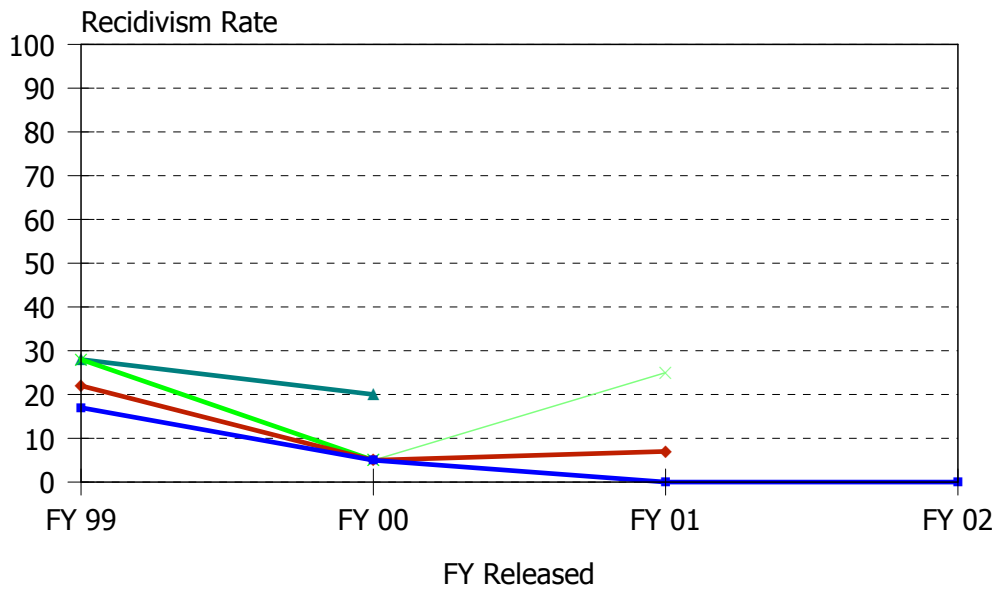
Historical Profile of Youth Released by Fiscal Year

Average	Total	Fiscal Year Released				
		99	00	01	02	03
Grace Cottage Shelter LOS in months	0.2	0.2	0.2	0.2	0.2	0.1
Placement episode LOS in months	0.6	0.2	0.2	1.6	0.2	1.2
Number of prior detention admissions	2.0	1.4	2.5	1.9	2.0	3.0
No. of prior incarceration admissions	1.4	0.9	2.3	1.7	1.1	1.0
Number of prior felony arrests	3.5	2.5	2.3	3.1	3.9	15.0
Number of prior arrests	4.5	3.0	4.3	4.5	4.6	15.0

Grace Cottage provides short-term shelter services for female offenders 13 to 18 years of age.

Level IV Recidivism Rates

Display 15, Grace Cottage, Short Term, Felony Recidivism Rates



Time Period	N. Released	Months Since Release			
		6 Months	12 Months	18 Months	24 Months
FY 99	18	17%	22%	28%	28%
FY 00	20	5%	10%	10%	15%
FY 01	15	0%	7%	13%	20%
FY 02	25	0%	16%	14%	.
FY 03 1 <sup>st</sup> Half	1	0%	.	.	.

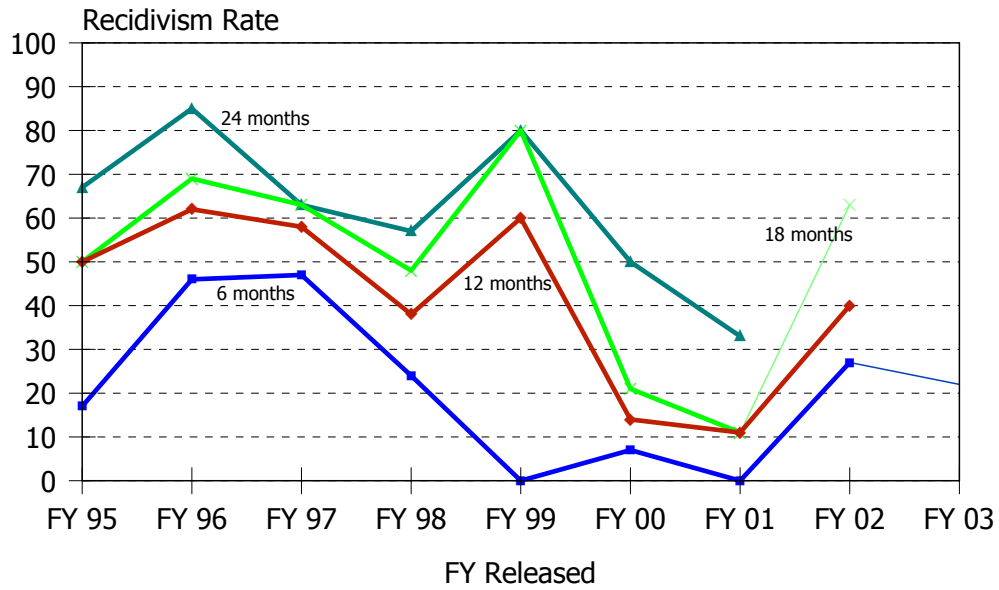
Historical Profile of Youth Released by Fiscal Year

Average	Total	Fiscal Year Released				
		99	00	01	02	03
Grace Cottage Short Term LOS in months	2.3	2.7	2.6	2.0	2.1	1.5
Placement episode LOS in months	4.4	4.2	4.3	4.0	4.6	7.4
Number of prior detention admissions	2.6	2.7	2.7	1.9	2.9	3.0
No. of prior incarceration admissions	1.6	1.5	1.6	1.8	1.7	1.0
Number of prior felony arrests	3.1	3.1	2.4	3.3	3.4	2.0
Number of prior arrests	5.3	5.1	4.9	4.4	6.4	4.0

Grace Cottage provides short-term residential treatment programming for females between the ages of 13 and 18 with supplemental community based services.



Display 16, Mountain Manor Felony Recidivism Rates



Time Period	N. Released	Months Since Release			
		6 Months	12 Months	18 Months	24 Months
FY 95	6	17%	50%	50%	67%
FY 96	13	46%	62%	69%	85%
FY 97	19	47%	58%	63%	63%
FY 98	21	24%	38%	48%	57%
FY 99	5	0%	60%	80%	80%
FY 00	14	7%	14%	21%	50%
FY 01	9	0%	11%	11%	33%
FY 02	15	27%	40%	63%	.
FY 03 1 <sup>st</sup> Half	9	22%	.	.	.

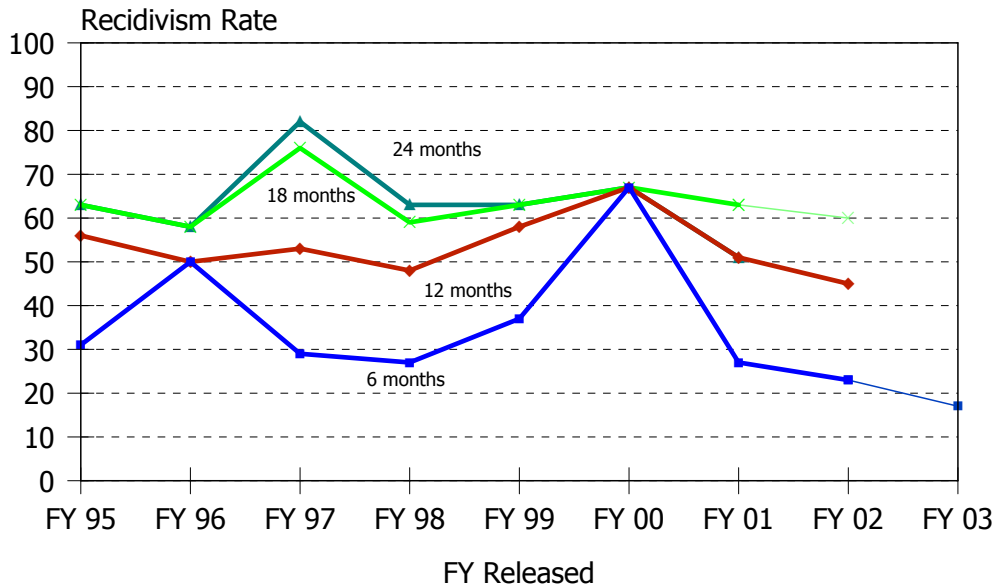
Historical Profile of Youth Released by Fiscal Year

Average	Total	Fiscal Year Released									
		95	96	97	98	99	00	01	02	03	
Mountain Manor LOS in months	1.5	1.3	1.3	1.4	1.3	1.2	1.7	2.8	1.7	1.1	
Placement episode LOS in months	3.5	2.3	3.8	3.4	2.8	5.9	3.7	5.3	3.2	2.2	
Number of prior detention admissions	2.1	2.5	2.2	2.1	1.9	3.0	2.1	1.4	2.2	1.9	
No. of prior incarceration admissions	1.2	0.5	1.1	1.2	0.9	1.7	1.0	1.6	1.5	1.9	
Number of prior felony arrests	2.6	3.0	3.2	2.3	2.0	3.5	2.7	2.6	2.6	2.8	
Number of prior arrests	6.0	9.7	6.5	6.3	5.8	6.3	5.4	4.8	5.5	5.6	

Mountain Manor provides drug and alcohol and family therapy programming for males and females between the ages of 12 and 19.

Level IV Recidivism Rates

Display 17, Mowlds Cottage Felony Recidivism Rates



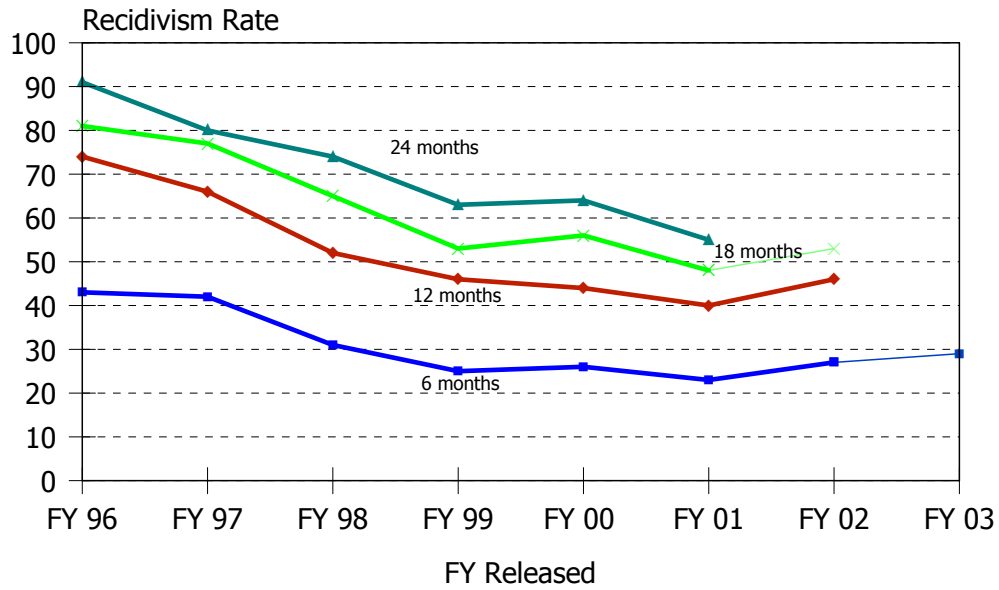
Time Period	N. Released	Months Since Release			
		6 Months	12 Months	18 Months	24 Months
FY 95	16	31%	56%	63%	63%
FY 96	12	50%	50%	58%	58%
FY 97	17	29%	53%	76%	82%
FY 98	56	27%	48%	59%	63%
FY 99	19	37%	58%	63%	63%
FY 00	3	67%	67%	67%	67%
FY 01	41	27%	51%	63%	51%
FY 02	47	23%	45%	60%	.
FY 03 1 <sup>st</sup> Half	18	17%	.	.	.

Historical Profile of Youth Released by Fiscal Year

Average	Total	Fiscal Year Released									
		95	96	97	98	99	00	01	02	03	
Mowlds Cottage LOS in months	0.7	0.2	0.4	0.8	0.7	1.2	1.2	0.7	0.5	1.2	
Placement episode LOS in months	2.4	0.9	3.2	0.9	2.3	6.0	5.2	3.0	1.0	2.3	
Number of prior detention admissions	2.1	1.4	1.4	1.3	1.7	2.1	4.3	2.5	2.4	2.7	
No. of prior incarceration admissions	2.1	2.0	2.2	0.5	1.6	2.5	5.7	3.0	1.9	2.8	
Number of prior felony arrests	2.8	3.6	3.3	2.5	2.9	3.2	3.7	2.6	2.3	2.6	
Number of prior arrests	6.7	8.3	9.0	6.2	7.0	6.1	10.7	6.6	5.5	6.6	

While Mowlds Cottage traditionally provides programming for youth transitioning from the Ferris School for Boys, since FY02 only youth who were serving administrative holds or were returned from other programs were admitted directly to Mowlds Cottage. Ferris School flow-downs are not included here. Ferris School flow-downs are shown in the Ferris School analysis on page 14.

Display 18, Snowden Cottage Felony Recidivism Rates



Time Period	N. Released	Months Since Release			
		6 Months	12 Months	18 Months	24 Months
FY 96	53	43%	74%	81%	91%
FY 97	71	42%	66%	77%	80%
FY 98	112	31%	52%	65%	74%
FY 99	150	25%	46%	53%	63%
FY 00	143	26%	44%	56%	64%
FY 01	130	23%	40%	48%	55%
FY 02	196	27%	45%	53%	.
FY 03 1 <sup>st</sup> Half	86	29%	.	.	.

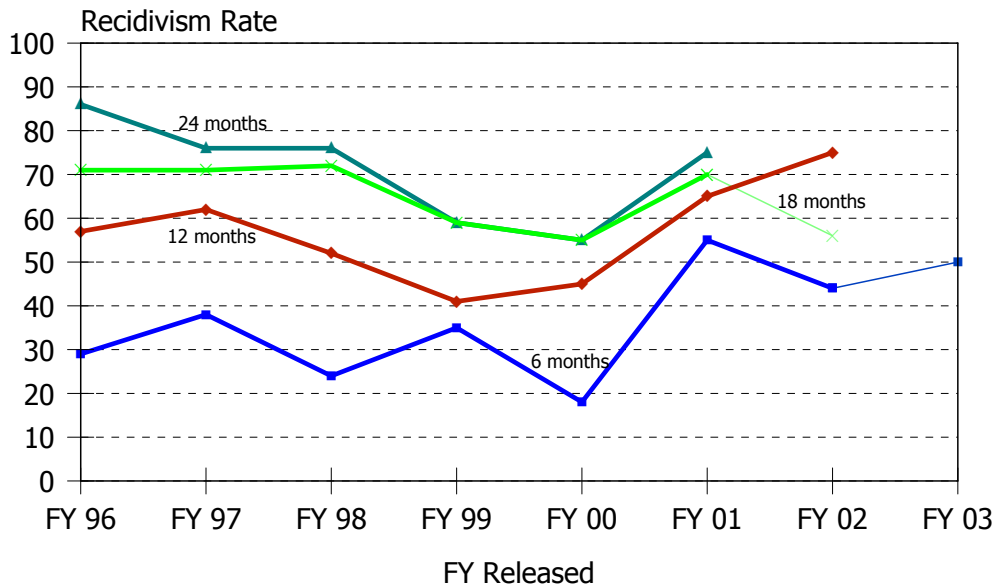
Historical Profile of Youth Released by Fiscal Year

Average	Total	Fiscal Year Released								
		96	97	98	99	00	01	02	03	
Snowden Cottage LOS in months	1.3	1.0	2.3	1.5	1.3	1.4	1.5	1.0	0.9	
Placement episode LOS in months	2.5	2.1	3.6	3.2	2.8	2.9	2.8	1.8	1.4	
Number of prior detention admissions	2.2	1.8	2.1	2.3	2.3	2.2	2.1	2.1	2.0	
No. of prior incarceration admissions	1.8	2.4	1.6	1.5	1.7	1.9	1.8	1.7	1.7	
Number of prior felony arrests	2.9	3.9	3.0	3.0	2.7	2.4	2.7	3.0	2.9	
Number of prior arrests	6.5	8.4	6.6	6.8	7.0	5.9	5.7	6.3	6.0	

Snowden Cottage provides a short-term residential program for delinquent males with educational services on-site.

Level IV Recidivism Rates

Display 19, Springfield Academy Felony Recidivism Rates



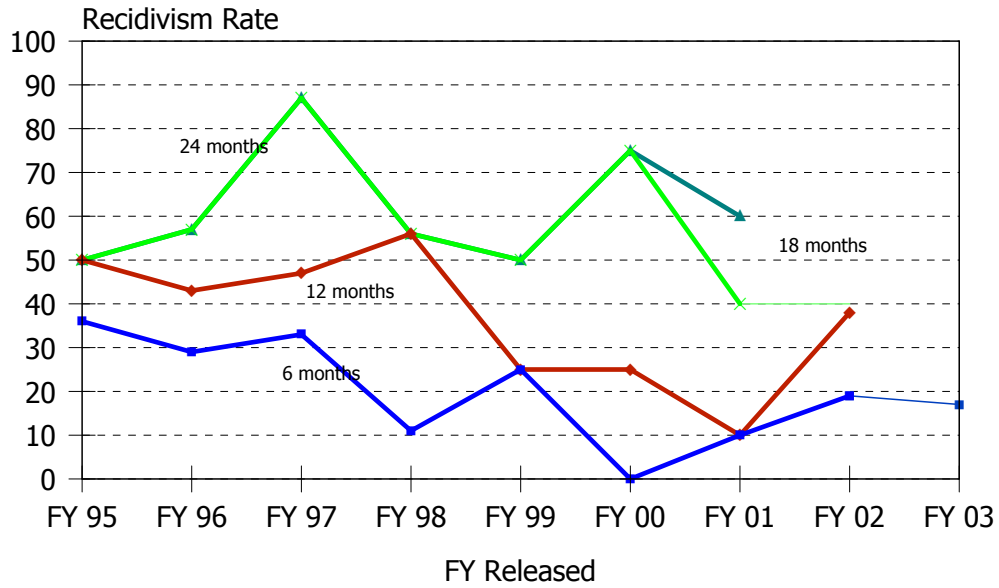
Time Period	N. Released	Months Since Release			
		6 Months	12 Months	18 Months	24 Months
FY 96	7	29%	57%	71%	86%
FY 97	34	38%	62%	71%	76%
FY 98	29	24%	52%	72%	76%
FY 99	17	35%	41%	59%	59%
FY 00	11	18%	45%	55%	55%
FY 01	20	55%	65%	70%	75%
FY 02	16	44%	75%	56%	.
FY 03 1 <sup>st</sup> Half	4	50%	.	.	.

Historical Profile of Youth Released by Fiscal Year

Average	Total	Fiscal Year Released								
		96	97	98	99	00	01	02	03	
Springfield Academy LOS in months	9.0	9.8	9.8	9.0	9.1	8.3	8.4	8.4	6.8	
Placement episode LOS in months	11.4	13.0	12.4	11.0	11.6	10.0	11.2	10.4	10.4	
Number of prior detention admissions	2.2	1.3	2.3	2.0	1.7	2.1	1.5	3.3	4.5	
No. of prior incarceration admissions	1.8	0.9	1.7	1.7	1.6	1.8	1.7	2.9	2.0	
Number of prior felony arrests	3.1	2.9	3.5	3.0	3.0	2.8	2.9	3.2	3.3	
Number of prior arrests	7.8	5.3	8.6	7.8	7.1	7.4	6.7	9.2	8.8	

Springfield Academy provides chemical abuse counseling, victim awareness, educational groups and normative culture programming for males between the ages of 13 and 18.

Display 20, Today Inc., General, Felony Recidivism Rates



Time Period	N. Released	Months Since Release			
		6 Months	12 Months	18 Months	24 Months
FY 95	14	36%	50%	50%	50%
FY 96	14	29%	43%	57%	57%
FY 97	15	33%	47%	87%	87%
FY 98	9	11%	56%	56%	56%
FY 99	4	25%	25%	50%	50%
FY 00	4	0%	25%	75%	75%
FY 01	10	10%	10%	40%	60%
FY 02	16	19%	38%	40%	.
FY 03 1 <sup>st</sup> Half	12	17%	.	.	.

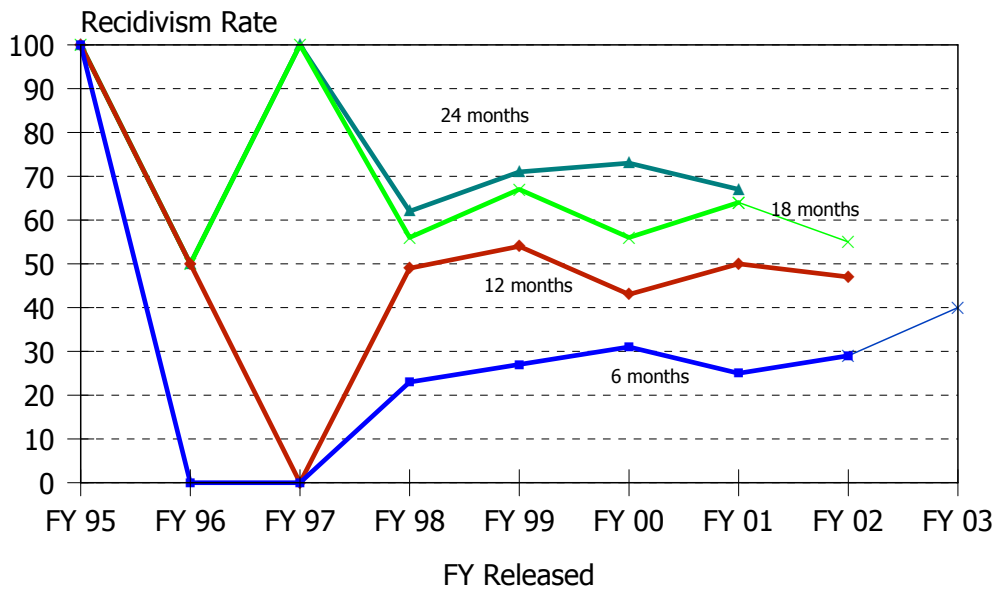
Historical Profile of Youth Released by Fiscal Year

Average	Total	Fiscal Year Released									
		95	96	97	98	99	00	01	02	03	
Today, Inc., LOS in months	2.0	2.1	2.3	1.9	1.7	2.1	2.5	2.3	2.1	1.7	
Placement episode LOS in months	4.1	5.5	4.0	3.9	2.3	3.9	6.1	4.2	4.3	3.0	
Number of prior detention admissions	1.7	1.9	2.1	1.5	2.2	1.3	2.0	1.4	1.3	1.7	
No. of prior incarceration admissions	1.3	2.4	0.9	1.0	0.4	2.3	1.8	1.4	1.4	1.1	
Number of prior felony arrests	2.7	3.4	3.5	2.0	2.2	3.3	2.5	3.1	2.1	2.8	
Number of prior arrests	6.7	8.3	7.8	6.0	7.3	4.8	6.0	6.9	6.3	5.0	

Today, Inc., provides alcohol and substance abuse treatment for juveniles between the ages of 13 and 19.

Level IV Recidivism Rates

Display 21, VisionQuest, Boot Camp, Felony Recidivism Rates



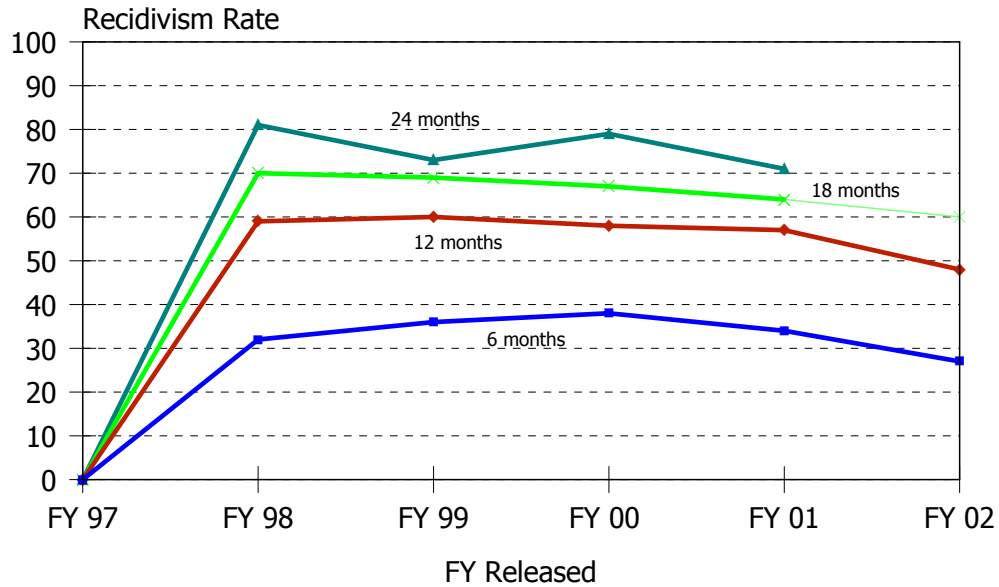
Time Period	N. Released	Months Since Release			
		6 Months	12 Months	18 Months	24 Months
FY 95	1	100%	100%	100%	100%
FY 96	2	0%	50%	50%	50%
FY 97	1	0%	0%	100%	100%
FY 98	39	23%	49%	56%	62%
FY 99	78	27%	54%	67%	71%
FY 00	93	31%	43%	56%	73%
FY 01	100	25%	50%	64%	67%
FY 02	102	28%	46%	55%	.
FY 03 1 <sup>st</sup> Half	63	40%	.	.	.

Historical Profile of Youth Released by Fiscal Year

Average	Total	Fiscal Year Released									
		95	96	97	98	99	00	01	02	03	
VisionQuest Boot Camp LOS in mo.	2.3	3.9	3.4	3.0	2.9	3.0	2.4	2.4	1.8	1.6	
Placement episode LOS in months	4.0	9.0	3.4	9.0	4.9	5.3	4.1	4.1	3.1	2.9	
Number of prior detention admissions	2.2	2.0	1.5	3.0	2.5	2.5	2.3	1.8	2.1	2.4	
No. of prior incarceration admissions	2.0	1.0	0.0	5.0	1.9	2.6	2.1	1.8	1.8	1.5	
Number of prior felony arrests	2.7	2.0	2.0	7.0	2.8	2.8	2.6	2.8	2.7	2.7	
Number of prior arrests	6.3	8.0	5.5	7.0	6.1	6.6	6.0	6.4	6.3	6.5	

VisionQuest Boot Camp provides a focus on discipline in addition to education, counseling and community services in a highly structured 30 and 90 day programs for males and females between the ages of 13 and 18.

Display 22, VisionQuest, New Directions Shelter, Felony Recidivism Rates



Time Period	N. Released	Months Since Release			
		6 Months	12 Months	18 Months	24 Months
FY 97	1	0%	0%	0%	0%
FY 98	105	32%	59%	70%	81%
FY 99	191	36%	60%	69%	73%
FY 00	160	38%	58%	67%	79%
FY 01	77	34%	57%	64%	71%
FY 02	44	27%	48%	60%	.

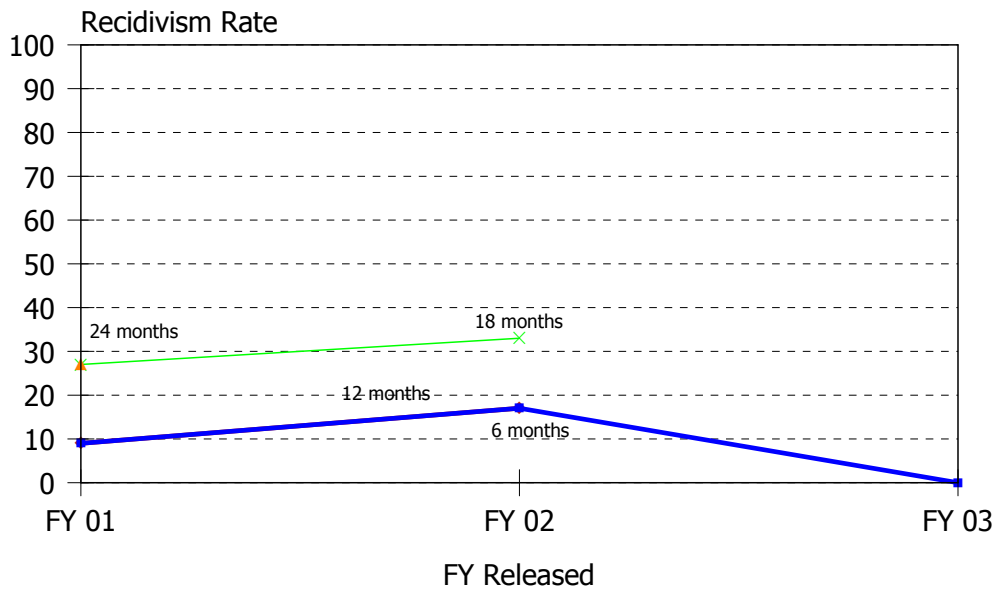
Historical Profile of Youth Released by Fiscal Year

Average	Total	Fiscal Year Released						
		97	98	99	00	01	02	
VisionQuest New Directions LOS in months	0.5	0.1	0.4	0.6	0.5	0.4	0.4	
Placement episode LOS in months	2.8	0.1	1.9	3.2	2.7	3.0	2.7	
Number of prior detention admissions	2.5	2.0	2.6	2.5	2.6	2.3	2.1	
Number of prior incarceration admissions	2.7	1.0	1.8	2.7	3.0	2.9	4.0	
Number of prior felony arrests	2.7	1.0	2.6	2.8	2.7	2.7	3.0	
Number of prior arrests	6.6	6.0	5.9	6.9	6.3	7.1	7.4	

VisionQuest’s New Directions Shelter provides educational services and shelter care for youth on administrative holds and aftercare revocations, or serves as an interim placement for males ages 12 to 18 who are detained or incarcerated in a detention center or the Ferris School for Boys awaiting a secure Level IV residential placement.

Level IV Recidivism Rates

Display 23, VisionQuest, Madalyn Program, Felony Recidivism Rates



Time Period	N. Released	Months Since Release			
		6 Months	12 Months	18 Months	24 Months
FY 01	11	9%	9%	27%	27%
FY 02	12	17%	17%	33%	0%
FY 03 1 <sup>st</sup> Half	1	0%	.	.	.

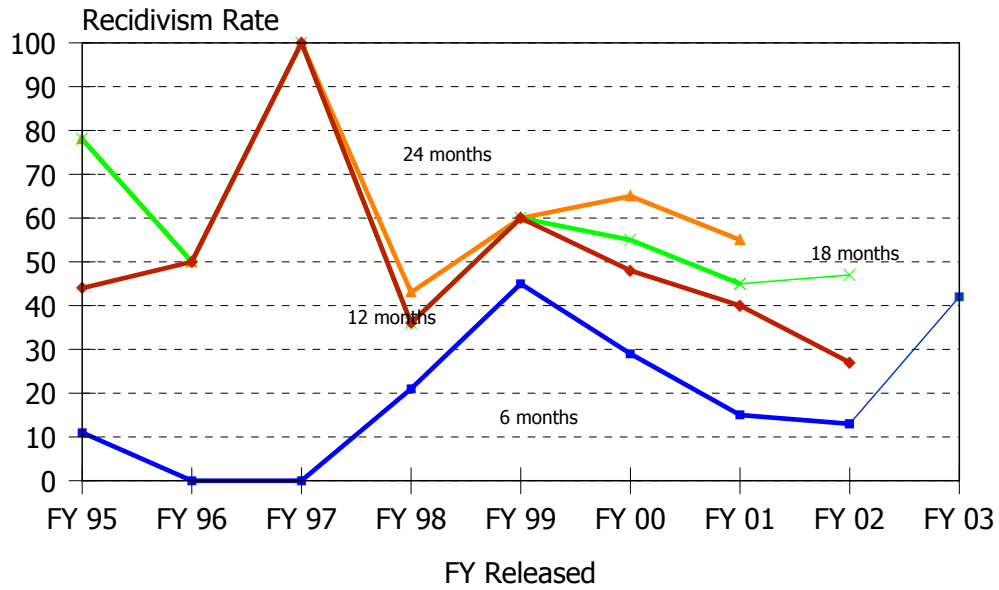
Historical Profile of Youth Released by Fiscal Year

Average	Total	Fiscal Year Released		
		00	01	02
VisionQuest Madalyn Program LOS in months	3.6	3.1	4.2	3.1
Placement episode LOS in months	6.1	5.6	6.7	3.8
Number of prior detention admissions	2.7	2.8	2.5	3.0
Number of prior incarceration admissions	2.5	1.9	3.1	3.0
Number of prior felony arrests	3.3	2.8	3.4	7.0
Number of prior arrests	6.4	5.9	6.8	7.0

VisionQuest's Madalyn Program is a residential program designed to address the specific needs of troubled teenage girls.



Display 24, VisionQuest, Quest, Felony Recidivism Rates



Time Period	N. Released	Months Since Release			
		6 Months	12 Months	18 Months	24 Months
FY 95	9	11%	44%	78%	78%
FY 96	6	0%	50%	50%	50%
FY 97	1	0%	100%	100%	100%
FY 98	14	21%	36%	36%	43%
FY 99	20	45%	60%	60%	60%
FY 00	21	29%	48%	55%	65%
FY 01	20	15%	40%	45%	55%
FY 02	30	13%	27%	47%	.
FY 03 1 <sup>st</sup> Half	12	42%			

Historical Profile of Youth Released by Fiscal Year

Average	Total	Fiscal Year Released									
		95	96	97	98	99	00	01	02	03	
VisionQuest Quest LOS in mo.	5.5	10.6	12.9	11.3	5.6	5.8	5.9	4.5	3.5	2.4	
Placement episode LOS in months	8.7	11.7	18.4	14.0	7.3	10.3	9.2	8.5	5.7	6.7	
Number of prior detention admissions	2.5	1.9	2.8	2.0	2.4	2.9	2.8	2.2	2.6	2.8	
No. of prior incarceration admissions	2.4	1.2	2.3	1.0	1.7	2.6	3.0	2.2	2.8	2.3	
Number of prior felony arrests	2.9	3.9	4.3	3.0	2.5	2.3	2.8	3.0	2.9	3.1	
Number of prior arrests	7.5	9.0	9.3	10.0	6.5	8.4	7.0	6.6	6.9	8.4	

The VisionQuest's Quest provides an individualized wilderness program designed to meet the needs of delinquent youth ages 13 to 18 with histories of multiple unsuccessful out-of-home placements.

Level IV Recidivism Rates

Display 25, Level IV Small Program Felony Recidivism Rates

Au Clair School, General, Felony Recidivism Rates

Time Period	N. Released	Months Since Release			
		6 Months	12 Months	18 Months	24 Months
FY 95	1	100%	100%	100%	100%
FY 96	1	100%	100%	100%	100%
FY 97	2	0%	50%	50%	100%
FY 98	8	25%	25%	25%	38%
FY 99	4	50%	50%	75%	100%
FY 00	2	0%	50%	50%	50%
FY 01	5	40%	40%	40%	25%
FY 02	3	0%	33%	.	.
FY 03 1 <sup>st</sup> Half	1	100%	.	.	.

A description was not available from DYRS for this Department of Education program.

Bowling Brook Preparatory School Felony Recidivism Rates

Time Period	N. Released	Months Since Release			
		6 Months	12 Months	18 Months	24 Months
FY 95	5	0%	20%	40%	40%
FY 96	9	11%	11%	44%	67%
FY 97	2	50%	100%	100%	100%
FY 98	4	50%	75%	75%	75%
FY 99	10	0%	60%	70%	80%
FY 00	5	20%	40%	40%	80%
FY 01	4	25%	50%	75%	75%
FY 02	3	0%	67%	100%	.

Bowling Brook provides normative culture, substance abuse group and educational programming for males between the ages of 16 and 19.

The Bridge, Long Term, Felony Recidivism Rates

Time Period	N. Released	Months Since Release			
		6 Months	12 Months	18 Months	24 Months
FY 95	4	0%	0%	50%	50%
FY 96	5	0%	20%	20%	20%
FY 97	1	100%	100%	100%	100%
FY 98	2	100%	100%	100%	100%
FY 99	6	0%	17%	17%	33%
FY 00	3	0%	33%	33%	33%
FY 01	3	33%	33%	67%	67%
FY 02	2	0%	50%	50%	.

The Bridge, Long Term, provides alcohol and substance abuse treatment for juveniles between the ages of 14 and 19.

The Bridge, Short Term, Felony Recidivism Rates

Time Period	N. Released	Months Since Release			
		6 Months	12 Months	18 Months	24 Months
FY 95	8	38%	38%	38%	38%
FY 96	2	50%	50%	50%	50%
FY 98	2	50%	50%	50%	50%
FY 01	1	0%	0%	0%	0%

The Bridge, Short Term, provides alcohol and substance abuse treatment for juveniles between the ages of 14 and 19.

Brown Schools at Laurel Ridge Felony Recidivism Rates

Time Period	N. Released	Months Since Release			
		6 Months	12 Months	18 Months	24 Months
FY 00	1	0%	0%	0%	0%
FY 01	1	0%	0%	0%	100%
FY 02	2	0%	0%	0%	.

A description was not available from DYRS for this program.

Brown Schools at Shadow Mountain, General, Felony Recidivism Rates

Time Period	N. Released	Months Since Release			
		6 Months	12 Months	18 Months	24 Months
FY 99	1	0%	100%	100%	100%
FY 00	1	0%	0%	0%	0%
FY 01	2	0%	100%	100%	100%

A description was not available from DYRS for this program.

Devereux Felony Recidivism Rates

Time Period	N. Released	Months Since Release			
		6 Months	12 Months	18 Months	24 Months
FY 96	1	100%	100%	100%	100%
FY 97	1	0%	0%	100%	100%
FY 01	1	0%	0%	0%	0%

A description was not available from DYRS for this Department of Education program.

## Level IV Recidivism Rates

### Diversified Treatment Alternatives Felony Recidivism Rates

Time Period	N. Released	Months Since Release			
		6 Months	12 Months	18 Months	24 Months
FY 97	2	0%	0%	0%	0%
FY 98	2	0%	0%	0%	50%
FY 99	5	0%	20%	20%	20%
FY 00	4	0%	0%	0%	25%
FY 01	3	0%	33%	33%	33%
FY 02	5	20%	40%	67%	.
FY 03 1 <sup>st</sup> Half	2	0%			

Diversified Treatment Alternatives provides specialized sexuality therapy groups, education/therapy groups, and a comprehensive intervention strategy to manage behavior for male sex offenders 8 to 17 years of age.

### Excelsior Youth Center Felony Recidivism Rates

Time Period	N. Released	Months Since Release			
		6 Months	12 Months	18 Months	24 Months
FY 95	5	0%	0%	20%	40%
FY 96	6	17%	17%	33%	50%
FY 97	3	0%	33%	33%	33%
FY 98	4	0%	25%	25%	25%
FY 99	2	0%	50%	50%	50%
FY 00	7	0%	0%	0%	0%
FY 01	9	11%	22%	22%	22%
FY 02	9	0%	0%	0%	.
FY 03 1 <sup>st</sup> Half	3	0%	.	.	.

Excelsior Youth Center provides programming for females ages 12 to 18 who are emotionally and behaviorally disturbed. The individualized treatment includes individual psychotherapy, group psychotherapy, family counseling, and peer group interaction.

### Gannondale, General, Felony Recidivism Rates

Time Period	N. Released	Months Since Release			
		6 Months	12 Months	18 Months	24 Months
FY 95	4	0%	0%	0%	0%
FY 96	3	0%	0%	33%	33%
FY 97	2	0%	0%	0%	0%
FY 98	1	0%	0%	0%	0%
FY 99	2	0%	0%	0%	0%
FY 00	1	0%	0%	100%	100%
FY 01	2	0%	0%	0%	0%

Gannondale provides staff secure educational programs, organized athletic competitions, leisure time activities, arts and crafts, and individual and group counseling.

George Junior Republic, Diagnostic, Felony Recidivism Rates

Time Period	N. Released	Months Since Release			
		6 Months	12 Months	18 Months	24 Months
FY 96	1	0%	0%	100%	100%
FY 01	1	0%	100%	100%	100%

A description was not available from DYRS for this program.

George Junior Republic, General, Felony Recidivism Rates

Time Period	N. Released	Months Since Release			
		6 Months	12 Months	18 Months	24 Months
FY 95	2	50%	100%	100%	100%
FY 96	8	88%	100%	100%	100%
FY 97	2	50%	50%	100%	100%
FY 99	9	33%	44%	44%	56%
FY 00	4	0%	25%	75%	75%
FY 01	7	57%	71%	100%	100%
FY 02	8	75%	88%	83%	.

George Junior Republic, General, provides a general treatment program with step-down Level III Group Home availability.

George Junior Republic, Special, Felony Recidivism Rates

Time Period	N. Released	Months Since Release			
		6 Months	12 Months	18 Months	24 Months
FY 96	4	75%	75%	100%	100%
FY 99	7	14%	29%	29%	43%
FY 00	3	0%	33%	67%	67%
FY 01	5	60%	60%	80%	80%
FY 02	3	100%	100%	100%	.

A description was not available from DYRS for this program.

Level IV Recidivism Rates

Hennepin County Home School Felony Recidivism Rates

Time Period	N. Released	Months Since Release			
		6 Months	12 Months	18 Months	24 Months
FY 95	2	0%	0%	0%	0%
FY 96	2	0%	0%	50%	50%
FY 97	6	0%	17%	17%	17%
FY 98	1	0%	0%	0%	0%
FY 99	5	0%	40%	40%	60%
FY 00	4	25%	50%	50%	50%
FY 01	7	0%	0%	0%	29%
FY 02	3	0%	0%	.	.
FY 03 1 <sup>st</sup> Half	2	0%	.	.	.

Hennepin County Home School provides comprehensive treatment for male sex offenders 14 to 18 years of age in a juvenile corrections facility.

KidsPeace, Diagnostic Program, Felony Recidivism Rates

Time Period	N. Released	Months Since Release			
		6 Months	12 Months	18 Months	24 Months
FY 95	1	0%	0%	0%	0%
FY 96	1	100%	100%	100%	100%
FY 98	1	0%	0%	100%	100%
FY 99	2	0%	0%	0%	50%
FY 01	3	0%	0%	0%	0%
FY 02	3	0%	0%	0%	.

KidsPeace's Diagnostic Program provides short-term treatment services combined with a comprehensive diagnostic evaluation for offenders 6 to 18 years of age.

KidsPeace, General, Felony Recidivism Rates

Time Period	N. Released	Months Since Release			
		6 Months	12 Months	18 Months	24 Months
FY 95	5	80%	80%	100%	100%
FY 96	7	14%	14%	43%	57%
FY 97	4	0%	0%	0%	25%
FY 98	6	0%	50%	67%	67%
FY 99	1	0%	0%	0%	0%
FY 02	1	0%	100%	100%	.

KidsPeace's General program provides 24-hour psychiatric care for offenders 6 to 18 years of age that require longer-term clinical, residential and educational services and supervision.

KidsPeace, Intensive, Felony Recidivism Rates

Time Period	N. Released	Months Since Release			
		6 Months	12 Months	18 Months	24 Months
FY 95	1	0%	100%	100%	100%
FY 96	1	0%	0%	0%	0%
FY 97	6	0%	0%	17%	17%
FY 98	3	0%	0%	67%	67%
FY 99	1	0%	0%	0%	0%
FY 01	1	0%	0%	0%	0%
FY 02	1	0%	0%	0%	.

KidsPeace's General program provides highly individualized, staff-secure, 24-hour psychiatric care for offenders 6 to 18 years of age requiring intensive clinical, recreational and educational services.

New Hope Treatment Centers, New Horizon Program Felony Recidivism Rates

Time Period	N. Released	Months Since Release			
		6 Months	12 Months	18 Months	24 Months
FY 00	1	0%	0%	0%	0%
FY 02	1	0%	0%	0%	.

New Hope Treatment Center's New Horizon program (formerly the Synergy program) provides long-term daily psychiatric treatment offenders 12 to 17.6 years of age.

New Hope Treatment Centers, Palmetto Point Program Felony Recidivism Rates

Time Period	N. Released	Months Since Release			
		6 Months	12 Months	18 Months	24 Months
FY 02	2	0%	0%	0%	.

New Hope Treatment Center's Palmetto Point program provides long-term daily psychiatric treatment female offenders 12 to 17.6 years of age.

New Hope Treatment Centers, Starting Pointe Program Felony Recidivism Rates

Time Period	N. Released	Months Since Release			
		6 Months	12 Months	18 Months	24 Months
FY 02	2	0%	0%	0%	.
FY 03 1 <sup>st</sup> Half	5	0%	.	.	.

New Hope Treatment Center's New Horizon program (formerly the Synergy program) provides a highly structured milieu specifically designed to monitor and redirect sexually inappropriate behavior, along with a comprehensive array of clinical, educational and recreational services

Level IV Recidivism Rates

New Hope Treatment Centers, Triad Program Felony Recidivism Rates

Time Period	N. Released	Months Since Release			
		6 Months	12 Months	18 Months	24 Months
FY 00	6	0%	17%	33%	33%
FY 01	2	0%	50%	50%	50%
FY 02	4	0%	0%	33%	.
FY 03 1 <sup>st</sup> Half	4	25%	.	.	.

New Hope's Triad Program provides an intensive and comprehensive residential treatment for male sex offenders 13 to 21 years of age with IQs ranging from 45 to 75.

New Hope Treatment Centers, Way Point Program Felony Recidivism Rates

Time Period	N. Released	Months Since Release			
		6 Months	12 Months	18 Months	24 Months
FY 00	1	0%	0%	0%	0%
FY 01	4	0%	0%	0%	0%
FY 02	4	0%	25%	100%	.
FY 03 1 <sup>st</sup> Half	2	50%	.	.	.

New Hope Treatment Centers' Way Point program provides treatment for sexually aggressive behavior to moderate to high-risk adolescent males 12 to 17.6 years of age.

The Pines, Behavioral Studies Program, Felony Recidivism Rates

Time Period	N. Released	Months Since Release			
		6 Months	12 Months	18 Months	24 Months
FY 97	1	0%	0%	0%	0%
FY 99	2	0%	0%	0%	0%
FY 00	3	0%	33%	33%	33%
FY 01	3	0%	0%	33%	33%
FY 02	8	0%	13%	25%	.
FY 03 1 <sup>st</sup> Half	4	0%	.	.	.

The Pines' Behavioral Studies Program provides treatment for male sex offenders, ages 10 to 18, in a highly structured residential environment.

The Pines, The Cottage/Right Track Program, Felony Recidivism Rates

Time Period	N. Released	Months Since Release			
		6 Months	12 Months	18 Months	24 Months
FY 01	2	0%	0%	50%	50%
FY 02	1	0%	0%	0%	.
FY 03 1 <sup>st</sup> Half	1	0%	.	.	.

The Pines' Cottage/Right Track Program provides services to psycho-sexually disturbed males 10 to 17 years of age with full scale IQs between 50 and 60.



The Pines, General, Felony Recidivism Rates

Time Period	N. Released	Months Since Release			
		6 Months	12 Months	18 Months	24 Months
FY 95	2	0%	0%	50%	100%
FY 96	2	50%	50%	50%	50%
FY 97	9	44%	44%	44%	44%
FY 98	9	33%	44%	44%	56%
FY 99	8	0%	13%	25%	25%
FY 00	5	20%	20%	40%	40%
FY 01	3	0%	33%	33%	33%

The Pines provides special education in a therapeutic residential setting to males and females between the ages of 10 and 17 years upon admission, with a DSM-IV psychiatric diagnosis.

The Pines, The Phoenix Program Felony Recidivism Rates

Time Period	N. Released	Months Since Release			
		6 Months	12 Months	18 Months	24 Months
FY 00	4	0%	0%	50%	50%
FY 01	3	0%	33%	67%	67%
FY 02	6	33%	50%	50%	.
FY 03 1 <sup>st</sup> Half	3	0%	.	.	.

The Pines' The Phoenix Program provides treatment for aggressive mentally ill male offenders 12 to 18 years of age who are having mental health problems coupled with major behavior problems.

The Pines, Young Men/Young Women's Center Felony Recidivism Rates

Time Period	N. Released	Months Since Release			
		6 Months	12 Months	18 Months	24 Months
FY 00	1	0%	0%	0%	0%
FY 02	2	50%	50%	100%	.
FY 03 1 <sup>st</sup> Half	1	0%	.	.	.

The Pines' Young Men and Young Women's Centers provide treatment for male and female offenders, respectively, who have been diagnosed with psychiatric and behavioral problems.

Level IV Recidivism Rates

Psychotherapeutic Children's Services,  
Transitional Living Program, Felony Recidivism Rates

Time Period	N. Released	Months Since Release			
		6 Months	12 Months	18 Months	24 Months
FY 95	12	42%	50%	58%	58%
FY 96	13	31%	46%	0%	0%
FY 97	12	33%	42%	58%	58%
FY 98	16	25%	50%	69%	75%
FY 99	1	0%	0%	0%	0%
FY 01	2	0%	50%	50%	50%

A description was not available from DYRS for this program.

Renewal Center Felony Recidivism Rates

Time Period	N. Released	Months Since Release			
		6 Months	12 Months	18 Months	24 Months
FY 01	1	0%	0%	0%	100%

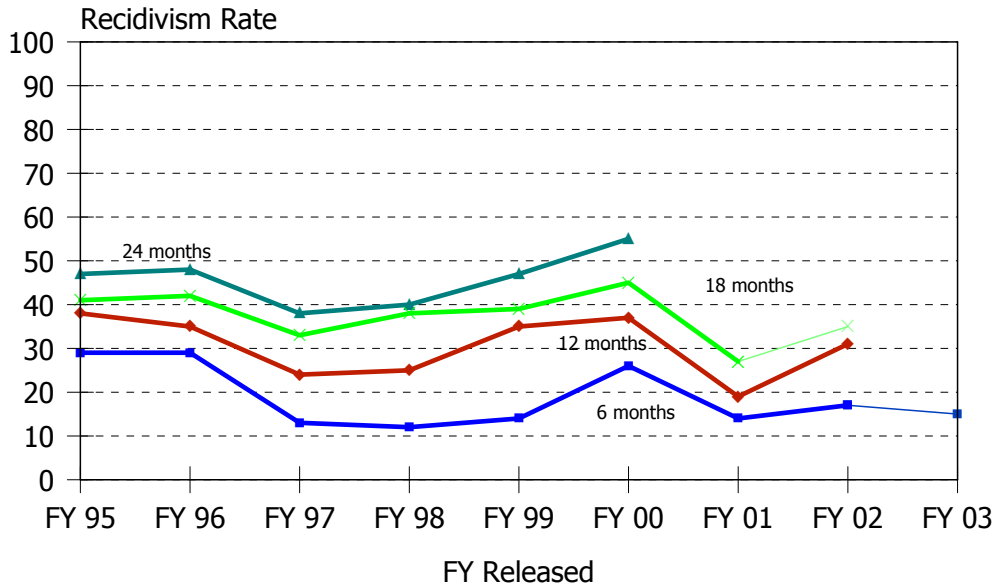
Renewal Center provides residential treatment services for offenders diagnosed with Psychoactive Substance Use Disorder.

Riverside Treatment Services, Inc., Felony Recidivism Rates

Time Period	N. Released	Months Since Release			
		6 Months	12 Months	18 Months	24 Months
FY 02	2	50%	50%	.	.
FY 03 1 <sup>st</sup> Half	1	0%	.	.	.

Residential Treatment Services, Inc. provides residential mental health services and acute psychiatric hospital services for youth that are dually diagnosed and/or are resistant to treatment.

Display 26, Level III Residential Felony Recidivism Rates



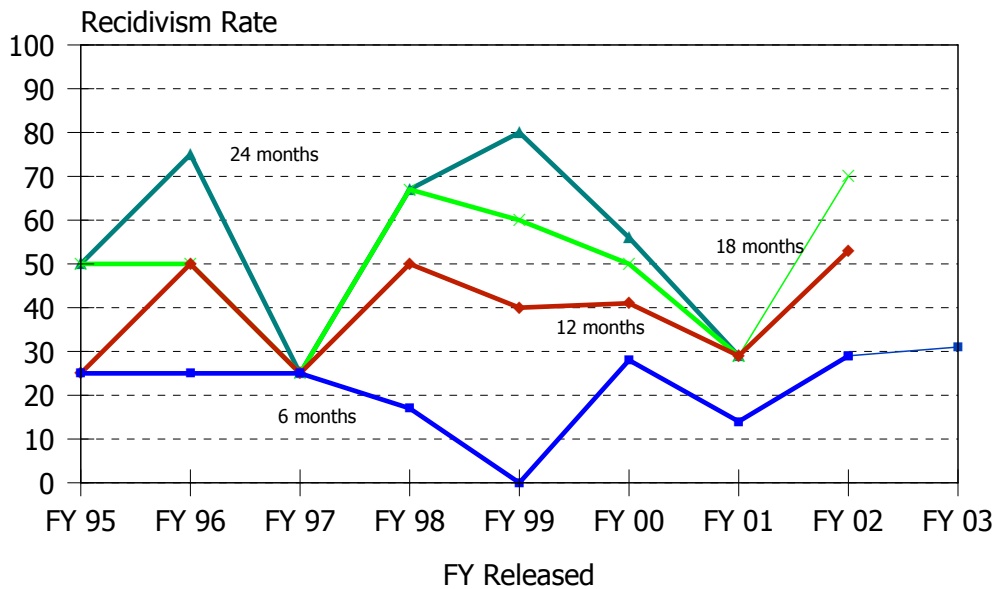
Time Period	N. Released	Months Since Release			
		6 Months	12 Months	18 Months	24 Months
FY 95	34	29%	38%	41%	47%
FY 96	48	29%	35%	42%	48%
FY 97	63	13%	24%	33%	38%
FY 98	52	12%	25%	38%	40%
FY 99	49	14%	35%	39%	47%
FY 00	53	26%	37%	45%	55%
FY 01	122	14%	19%	27%	34%
FY 02	133	17%	31%	35%	.
FY 03 1 <sup>st</sup> Half	92	15%	.	.	.

Historical Profile of Youth Released by Fiscal Year

Average	Total	Fiscal Year Released									
		95	96	97	98	99	00	01	02	03	
Level III LOS in months	4.3	9.6	6.0	7.3	5.7	4.5	3.7	2.4	3.0	3.1	
Placement episode LOS in months	7.3	10.7	9.3	9.9	8.5	7.4	7.2	5.5	6.5	6.3	
Number of prior detention admissions	1.9	2.2	1.9	2.2	2.1	1.9	2.1	1.6	1.6	1.5	
No. of prior incarceration admissions	1.4	0.4	0.9	0.9	1.2	1.8	2.2	0.8	0.9	1.1	
Number of prior felony arrests	1.7	2.1	2.7	1.7	2.2	1.9	1.8	1.1	1.0	1.1	
Number of prior arrests	5.8	7.2	8.3	6.8	6.5	6.4	5.9	4.6	4.6	5.1	

Level III Recidivism Rates

Display 27, Camelot, General, Felony Recidivism Rates



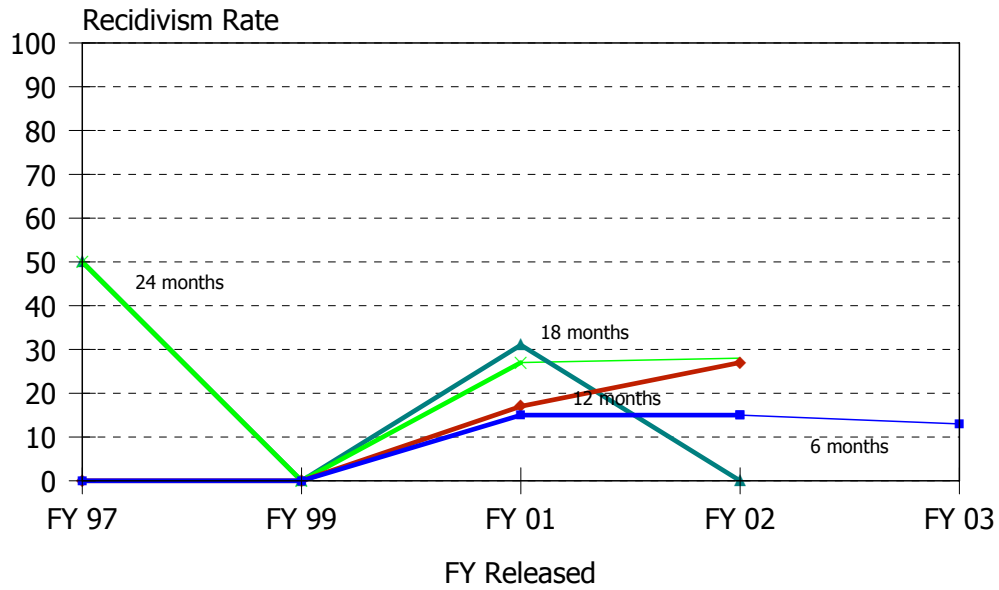
Time Period	N. Released	Months Since Release			
		6 Months	12 Months	18 Months	24 Months
FY 95	4	25%	25%	50%	50%
FY 96	4	25%	50%	50%	75%
FY 97	4	25%	25%	25%	25%
FY 98	6	17%	50%	67%	67%
FY 99	5	0%	40%	60%	80%
FY 00	18	28%	41%	50%	56%
FY 01	14	14%	29%	29%	29%
FY 02	17	29%	53%	70%	.
FY 03 1 <sup>st</sup> Half	13	31%	.	.	.

Historical Profile of Youth Released by Fiscal Year

Average	Total	Fiscal Year Released									
		95	96	97	98	99	00	01	02	03	
Camelot LOS in months	1.9	5.2	3.2	2.6	2.2	3.6	1.9	1.6	1.1	0.7	
Placement episode LOS in months	9.4	5.3	10.7	6.2	10.9	14.2	8.3	14.1	11.5	2.6	
Number of prior detention admissions	2.0	1.5	1.5	1.5	3.7	1.2	2.8	1.6	1.6	1.6	
No. of prior incarceration admissions	1.8	0.3	0.8	1.5	1.7	1.2	2.0	2.3	2.1	1.7	
Number of prior felony arrests	1.7	1.5	1.0	2.3	3.0	1.2	1.7	1.4	2.2	1.0	
Number of prior arrests	5.8	5.5	6.0	6.0	8.2	4.0	6.4	4.4	5.4	6.8	

Camelot, General, residential group care for pre-adjudicated males between the ages of 12-18.

Display 28, People's Place II Felony Recidivism Rates



Time Period	N. Released	Months Since Release			
		6 Months	12 Months	18 Months	24 Months
FY 97	2	0%	0%	50%	50%
FY 99	1	0%	0%	0%	0%
FY 01	101	15%	17%	27%	31%
FY 02	112	15%	27%	28%	.
FY 03 1 <sup>st</sup> Half	79	13%	.	.	.

Historical Profile of Youth Released by Fiscal Year

Average	Total	Fiscal Year Released				
		97	99	01	02	03
People's Place II LOS in months	0.6	5.0	0.6	0.5	0.5	0.5
Placement episode LOS in months	1.6	13.0	9.9	1.1	1.3	2.4
Number of prior detention admissions	1.5	2.5	7.0	1.5	1.4	1.6
No. of prior incarceration admissions	0.4	1.0	8.0	0.1	0.4	0.7
Number of prior felony arrests	0.7	2.0	1.0	0.6	0.7	0.8
Number of prior arrests	3.9	4.5	12.0	3.4	3.8	4.7

People's Place II operates a supervised group home as an alternative to secure detention.

Level III Recidivism Rates

Display 29, Level III Small Program Felony Recidivism Rates

Brown Schools at Shadow Mountain, Foster Care, Felony Recidivism Rates

Time Period	N. Released	Months Since Release			
		6 Months	12 Months	18 Months	24 Months
FY 00	1	0%	0%	100%	100%
FY 01	1	0%	100%	.	.

A description was not available from DYRS for this program.

Child, Inc., General, Felony Recidivism Rates

Time Period	N. Released	Months Since Release			
		6 Months	12 Months	18 Months	24 Months
FY 95	22	27%	36%	36%	45%
FY 96	27	22%	22%	33%	41%
FY 97	34	18%	29%	38%	47%
FY 98	24	8%	21%	38%	38%
FY 99	24	21%	33%	38%	46%
FY 00	28	29%	32%	46%	57%
FY 01	5	0%	20%	20%	40%
FY 02	2	0%	50%	50%	.

Child, Inc., General, provides foster care for adjudicated males and females between the ages of 8 and 18.

YMCA, Weekly, Felony Recidivism Rates

Time Period	N. Released	Months Since Release			
		6 Months	12 Months	18 Months	24 Months
FY 96	2	50%	50%	50%	50%
FY 97	1	0%	0%	100%	100%
FY 99	1	100%	100%	100%	100%
FY 00	5	0%	40%	40%	40%
FY 01	1	0%	0%	0%	100%
FY 02	2	50%	50%	50%	.

YMCA's Weekly program provides emergency housing – with no additional services – for adjudicated males 18 years of age who are in need of immediate and temporary housing.

## Data Sources

### Criminal Justice Information System Data

Arrest data was downloaded from the Criminal Justice Information System (CJIS) on July 11, 2003, for use in this study. Before the arrest data could be analyzed, extensive cleanup and charge selection was required according to the following protocol:

- a. Complete criminal history information was downloaded from CJIS at the charge level for all youth released from a residential Level IV or V program from July 1, 1994 through December 31, 2002.
- b. Charges from arresting jurisdictions other than “DE” were excluded, thus deleting charges under municipal ordinances.
- c. Charges for Title 21 offenses not related to driving under the influence or the theft of a motor vehicle were excluded.
- d. Offense Title, Section, Class, and Type citations were verified against the SAC’s law file. Where CJIS statute citations did not match the law file, the citations were corrected. The SAC’s law file matches current state statutes. For example, an offender’s arrest for burglary in the third degree, a class F felony, appeared in CJIS as an unclassified misdemeanor.
- e. Attempted offenses charged under 11 Del.C. § 531 were corrected to the actual statute violated where an appropriate match could be made against the attempted offense’s literal description. For example, 11 Del.C. § 531, attempted theft over \$1,000, was recoded as an arrest for 11 Del.C. § 841, theft over \$1,000 – attempted.
- f. Attempted offenses charged under 11 Del.C. § 531 where the literal description did not reference an actual offense (Attempted attempt to commit a crime) and the NCIC code was not missing, were recoded to the actual statutes using the NCIC code.
- g. Attempted offenses charged under 11 Del.C. § 531 where the literal description did not reference an actual offense (Attempted attempt to commit a crime) and the NCIC code was missing, were recoded to actual statutes through the descriptive information contained in CJIS under the offense’s complaint number.
- h. Attempted offenses charged under 11 Del.C. § 531 where the literal description did not reference an actual offense, the NCIC code was missing and the complaint information did not yield any clues as to the crime committed were resolved within the context of the offender’s arrest patterns and criminal career.
- i. Criminal charges for individual offenders were aggregated at the arrest level, thus providing a collection of all relevant charges by offender and date of arrest, i.e., charges were aggregated into arrest events by date of arrest and SBI number.

Incorrect statute citations on 9,133 charges, or 7.1 percent, were changed to match the SAC law file.

## Placement Data

Release cohort data was extracted from the data maintained on the DSCYF's Family and Child Tracking System (FACTS), and the SAC's DYRS facility database, for youth released from placements from July 1, 1994, through December 31, 2002. Release cohort data was conflated according to the following protocol:

- a. DFS, CMH, and alternative Level III, IV and V program data was extracted from FACTS on July 2, 2003. The alternative placement information (program name, admission and release dates) was verified against DSCYF fiscal records. If the fiscal records were not found, the placement information was verified through the program's records, when these were available.
- b. The program data were integrated with the SAC's juvenile facility database.
  - Excluded from the dataset were alternative placement records which coincided with a facility placement record, i.e., if a youth was serving time in Ferris but a bed was being saved in an alternative program, only the Ferris record was included in the dataset.
  - For cases where an alternative programs placement spanned over an admission into a secure facility, i.e., a youth was sent to the Stevenson House for a 72 hour administrative hold, the alternative program's placement information was adjusted to reflect the exit from the program and the entry into secure care.
  - For cases where an alternative program placement spanned over another alternative program placement, i.e. a youth's bed was being saved in a program while the youth was being held in a Level IV Snowden Cottage slot, admission and release dates were adjusted to correspond to fiscal records.
  - For cases where fiscal records showed that a youth was transferred, admitted, and/or released, but there was no corresponding record of the transfer in FACTS, a new record was created to reflect this movement.

A total of 2,098 placement records were found to be in error, an alternative residential program data error rate of 20.3 percent, due to discrepancies in admission and/or release dates when compared to fiscal records, missing records, duplication, and offender identification problems.

## Secure Placement Episodes

Secure placement episodes comprise a continuous period of time when a youth is not in the community and may include multiple releases from secure residential placements. For example, the typical Ferris School for Boys placement episode includes three uninterrupted placements: (1) admission to the Detention Center, (2) admission to Ferris School, and (3) transition back to the community through Mowlds Cottage.

The cohort data in this study includes releases from secure or institutional out-of-home placement episodes, and non-secure Level III placements. Secure placements include DYRS



detention and Level IV and Level V programs which house adjudicated youth in secure settings. Secure placements also include Division of Family Services (DFS) and Child Mental Health (CMH) programs that provide residential services which are classified by DSCYF as crisis bed, mental health; inpatient hospital; inpatient hospital, mental health; residential group care, treatment center; residential Interagency Collaborative Team; residential treatment, mental health; and residential treatment, substance abuse.

From time-to-time a secure DYRS placement will be preceded or followed by a DFS or CMH residential placement. Residential DFS and CMH placements are included in this study for youth that had at least one active DYRS residential placement. Youth without DYRS residential placements are not a part of this study. DFS and CMH placements are included in this study so that the time a youth spends in the community after being released from a secure residential placement episode can be calculated accurately.

Youth in Level III programs are in the community while they attend school, recreational activities, receive vocational training, or attend counseling sessions. Some Level III programs are classified by FACTS as being residential. FACTS' residential classification applies to Level III programs that provide group care, independent living, non-secure detention, and transitional services. These programs are not secure residential programs.

During the study period, 4,566 juveniles were released from 22,204 placements. These 22,204 out-of-home placements can be grouped into 14,690 placement episodes. Thirty-nine percent (5,714) of the placement episodes during the study period were DYRS adjudicated secure placement episodes, the remainder were DFS, CMH, secure detention, or non-secure Level III placement episodes.

### Level III, IV and V Recidivism Study Dataset

The analysis file was produced by joining the latest available offender identification (SBI, and demographic information such as name, date of birth, race), arrest history (CJIS) and placement data (DYRS facility and contracted III, IV and V programs). Since the analysis file used for calculating all the statistics in this report was conflated from the latest available information, the statistics presented in this document supersede statistics presented in previous reports. In total, 127,534 arrest charges were identified, verified and matched against 22,204 out-of-home placements to produce the analysis file.

No statistics are presented in this document for pre-trial detainees. The adjudicated Level V felony recidivism rates presented in this document for juveniles held in detention centers apply to juveniles who were adjudicated and subsequently admitted to a detention center or were held in a detention center for more than 10 days after their adjudication. This change in measurement means that the Level V, New Castle Detention Center, and Stevenson House Detention Center release counts and felony recidivism rates reported in this document are not comparable to felony recidivism rates and release counts reported in previous reports.

Considered as Ferris students, for this analysis were offenders that spent at least one day in the Ferris School before their transfer to Mowlds Cottage or release to the community. This treatment of the Ferris School releases removes from the Ferris School analysis youth that spent their incarceration at Mowlds Cottage and did not benefit from the intensive programming offered by the Ferris School.

Considered as Mowlds Cottage youth were juveniles who spent their entire incarceration at Mowlds Cottage before being released to the community.

## Appendix

### Historical Recidivism Rates

The following appendix contains recidivism rates for programs that have not been active in the past two fiscal years. The programs are grouped by dispositional level.

#### Display 31, Level V Historical Program Felony Recidivism Rates

##### Alternative Rehabilitative Community Felony Recidivism Rates

Time Period	N. Released	Months Since Release			
		6 Months	12 Months	18 Months	24 Months
FY 95	1	0%	0%	0%	100%
FY 96	3	67%	67%	67%	67%
FY 98	3	100%	100%	100%	100%

A description was not available from DYRS for this program.

##### Rebound, Secure, Felony Recidivism Rates

Time Period	N. Released	Months Since Release			
		6 Months	12 Months	18 Months	24 Months
FY 95	1	0%	0%	0%	0%
FY 96	2	50%	100%	100%	100%

A description was not available from DYRS for this program.

Historical Recidivism Rates

Display 32, Level IV Historical Program Felony Recidivism Rates

Abraxas, Drug Sellers, Felony Recidivism Rates

Time Period	N. Released	Months Since Release			
		6 Months	12 Months	18 Months	24 Months
FY 95	3	33%	67%	67%	100%
FY 96	5	60%	80%	80%	80%

A description was not available from DYRS for this program.

Abraxas, Intensive, Felony Recidivism Rates

Time Period	N. Released	Months Since Release			
		6 Months	12 Months	18 Months	24 Months
FY 95	1	0%	0%	0%	0%

A description was not available from DYRS for this program.

Abraxas, Long Term, Felony Recidivism Rates

Time Period	N. Released	Months Since Release			
		6 Months	12 Months	18 Months	24 Months
FY 95	2	0%	100%	100%	100%
FY 96	8	13%	50%	75%	75%
FY 97	2	50%	100%	100%	100%

A description was not available from DYRS for this program.

Abraxas, Short Term, Felony Recidivism Rates

Time Period	N. Released	Months Since Release			
		6 Months	12 Months	18 Months	24 Months
FY 96	3	33%	33%	67%	67%
FY 99	1	0%	0%	100%	100%

A description was not available from DYRS for this program.

A.R.C., General, Felony Recidivism Rates

Time Period	N. Released	Months Since Release			
		6 Months	12 Months	18 Months	24 Months
FY 95	4	75%	75%	75%	100%
FY 96	15	53%	67%	73%	87%
FY 97	2	0%	0%	0%	50%
FY 98	3	33%	33%	33%	33%

A description was not available from DYRS for this program.

A.R.C., Pre-Release, Felony Recidivism Rates

Time Period	N. Released	Months Since Release			
		6 Months	12 Months	18 Months	24 Months
FY 98	1	100%	100%	100%	100%

A description was not available from DYRS for this program.

A.R.C., Special, Felony Recidivism Rates

Time Period	N. Released	Months Since Release			
		6 Months	12 Months	18 Months	24 Months
FY 95	1	0%	0%	100%	100%

A description was not available from DYRS for this program.

Benedictine School Felony Recidivism Rates

Time Period	N. Released	Months Since Release			
		6 Months	12 Months	18 Months	24 Months
FY 97	1	0%	0%	0%	0%

A description was not available from DYRS for this program.

Charter Treatment Felony Recidivism Rates

Time Period	N. Released	Months Since Release			
		6 Months	12 Months	18 Months	24 Months
FY 95	9	44%	56%	56%	56%
FY 96	3	0%	67%	67%	67%

A description was not available from DYRS for this program.

Concern, Treatment Unit, Felony Recidivism Rates

Time Period	N. Released	Months Since Release			
		6 Months	12 Months	18 Months	24 Months
FY 95	2	0%	50%	50%	50%
FY 96	1	0%	0%	0%	0%
FY 97	1	0%	100%	100%	100%

A description was not available from DYRS for this program.

Historical Recidivism Rates

George Junior Republic, Drug and Alcohol, Felony Recidivism Rates

Time Period	N. Released	Months Since Release			
		6 Months	12 Months	18 Months	24 Months
FY 00	1	0%	0%	0%	0%

A description was not available from DYRS for this program.

KidsPeace, Dual Diagnosis Program, Felony Recidivism Rates

Time Period	N. Released	Months Since Release			
		6 Months	12 Months	18 Months	24 Months
FY 99	2	0%	0%	0%	0%

A description was not available from DYRS for this program.

Mille Lacs Academy, Adolescent, Felony Recidivism Rates

Time Period	N. Released	Months Since Release			
		6 Months	12 Months	18 Months	24 Months
FY 95	5	20%	40%	60%	60%
FY 96	6	67%	67%	67%	67%
FY 97	3	67%	67%	67%	67%
FY 98	1	100%	100%	100%	100%

A description was not available from DYRS for this program.

Mille Lacs Academy, Early Adolescent, Felony Recidivism Rates

Time Period	N. Released	Months Since Release			
		6 Months	12 Months	18 Months	24 Months
FY 97	1	0%	0%	0%	0%

A description was not available from DYRS for this program.

National Center Institute and Alternatives Felony Recidivism Rates

Time Period	N. Released	Months Since Release			
		6 Months	12 Months	18 Months	24 Months
FY 96	1	0%	0%	0%	100%
FY 98	1	0%	0%	0%	0%
FY 99	1	0%	0%	0%	0%

A description was not available from DYRS for this program.

New Hope Treatment Centers, Crisis Program Felony Recidivism Rates

Time Period	N. Released	Months Since Release			
		6 Months	12 Months	18 Months	24 Months
FY 00	1	100%	100%	100%	100%

New Hope Treatment Centers' Crisis Program provides psychiatric crisis stabilization services to emotionally disturbed children and adolescents 9 to 18 years of age.

Pathways Felony Recidivism Rates

Time Period	N. Released	Months Since Release			
		6 Months	12 Months	18 Months	24 Months
FY 98	7	43%	71%	86%	100%
FY 99	2	0%	0%	50%	50%
FY 00	1	0%	0%	0%	0%

Pathways provides substance abuse counseling, individual and group therapy for juveniles between the ages of 12 and 19.

The Pines, The Cooperative Program, Felony Recidivism Rates

Time Period	N. Released	Months Since Release			
		6 Months	12 Months	18 Months	24 Months
FY 00	2	0%	0%	0%	0%

The Pines' Cooperative Program provides treatment for youth with severe emotional and behavioral problems and significant developmental disabilities.

Stetson School Felony Recidivism Rates

Time Period	N. Released	Months Since Release			
		6 Months	12 Months	18 Months	24 Months
FY 98	1	0%	0%	100%	100%
FY 99	1	0%	0%	0%	0%
FY 00	1	0%	0%	0%	100%

A description was not available from DYRS for this program.

## Historical Recidivism Rates

### Tarkio, General, Felony Recidivism Rates

Time Period	N. Released	Months Since Release			
		6 Months	12 Months	18 Months	24 Months
FY 96	13	38%	54%	69%	69%
FY 97	15	13%	40%	60%	67%
FY 98	11	27%	45%	91%	91%
FY 99	2	50%	50%	50%	100%

A description was not available from DYRS for this program.

### Tarkio Academy, Sex Offender, Felony Recidivism Rates

Time Period	N. Released	Months Since Release			
		6 Months	12 Months	18 Months	24 Months
FY 97	3	33%	33%	33%	33%
FY 98	3	0%	33%	67%	67%
FY 99	4	0%	0%	0%	0%

A description was not available from DYRS for this program.

### The Terraces, Long Term, Felony Recidivism Rates

Time Period	N. Released	Months Since Release			
		6 Months	12 Months	18 Months	24 Months
FY 96	1	0%	0%	0%	0%
FY 97	23	17%	43%	57%	70%
FY 98	3	67%	67%	100%	100%

A description was not available from DYRS for this program.

### The Terraces, Short Term, Felony Recidivism Rates

Time Period	N. Released	Months Since Release			
		6 Months	12 Months	18 Months	24 Months
FY 97	14	21%	57%	57%	71%
FY 98	4	50%	50%	75%	75%

A description was not available from DYRS for this program.



Timber Ridge Felony Recidivism Rates

Time Period	N. Released	Months Since Release			
		6 Months	12 Months	18 Months	24 Months
FY 98	1	0%	0%	0%	0%

A description was not available from DYRS for this Department of Education program.

Today Inc., Re-Entry, Felony Recidivism Rates

Time Period	N. Released	Months Since Release			
		6 Months	12 Months	18 Months	24 Months
FY 95	3	33%	33%	33%	33%

A description was not available from DYRS for this program.

Victor Cullen Felony Recidivism Rates

Time Period	N. Released	Months Since Release			
		6 Months	12 Months	18 Months	24 Months
FY 95	6	33%	67%	67%	67%
FY 96	4	0%	25%	50%	75%

A description was not available from DYRS for this program.

The Woods Felony Recidivism Rates

Time Period	N. Released	Months Since Release			
		6 Months	12 Months	18 Months	24 Months
FY 99	1	0%	0%	100%	100%
FY 01	1	0%	0%	0%	0%

A description was not available from DYRS for this Department of Education program.

Historical Recidivism Rates

Display 33, Level III Historical Program Felony Recidivism Rates

A.R.C., Foster Care, Felony Recidivism Rates

Time Period	N. Released	Months Since Release			
		6 Months	12 Months	18 Months	24 Months
FY 96	2	50%	50%	50%	50%
FY 97	1	100%	100%	100%	100%
FY 98	1	0%	0%	0%	0%

A description was not available from DYRS for this program.

Catholic Charities Felony Recidivism Rates

Time Period	N. Released	Months Since Release			
		6 Months	12 Months	18 Months	24 Months
FY 96	4	50%	75%	75%	75%
FY 97	4	0%	0%	0%	0%
FY 98	4	0%	25%	25%	50%
FY 99	1	100%	100%	100%	100%

A description was not available from DYRS for this program.

Children's Choice Felony Recidivism Rates

Time Period	N. Released	Months Since Release			
		6 Months	12 Months	18 Months	24 Months
FY 97	3	0%	0%	0%	0%

A description was not available from DYRS for this program.

Concern, Foster Care, Felony Recidivism Rates

Time Period	N. Released	Months Since Release			
		6 Months	12 Months	18 Months	24 Months
FY 95	3	67%	67%	100%	100%
FY 96	2	0%	50%	50%	50%
FY 97	1	100%	100%	100%	100%

A description was not available from DYRS for this program.

Division of Family Services, Foster Care, Felony Recidivism Rates

Time Period	N. Released	Months Since Release			
		6 Months	12 Months	18 Months	24 Months
FY 97	1	0%	0%	0%	0%
FY 98	2	0%	0%	0%	0%
FY 99	1	0%	0%	0%	0%

A description was not available from DYRS for this program.

Diversified Treatment Alternatives, Foster Care, Felony Recidivism Rates

Time Period	N. Released	Months Since Release			
		6 Months	12 Months	18 Months	24 Months
FY 98	2	0%	0%	100%	100%

A description was not available from DYRS for this program.

Father Flannigan's Boys Home Felony Recidivism Rates

Time Period	N. Released	Months Since Release			
		6 Months	12 Months	18 Months	24 Months
FY 98	1	0%	0%	0%	0%

A description was not available from DYRS for this program.

Home of Divine Providence Felony Recidivism Rates

Time Period	N. Released	Months Since Release			
		6 Months	12 Months	18 Months	24 Months
FY 00	1	0%	0%	0%	0%

A description was not available from DYRS for this program.

Impact, Foster Care, Felony Recidivism Rates

Time Period	N. Released	Months Since Release			
		6 Months	12 Months	18 Months	24 Months
FY 98	1	0%	0%	0%	0%
FY 99	1	0%	0%	0%	0%

A description was not available from DYRS for this program.

## Historical Recidivism Rates

### Impact, Independent Living, Felony Recidivism Rates

Time Period	N. Released	Months Since Release			
		6 Months	12 Months	18 Months	24 Months
FY 96	1	0%	0%	0%	0%

A description was not available from DYRS for this program.

### Learning Experiences, Inc., Felony Recidivism Rates

Time Period	N. Released	Months Since Release			
		6 Months	12 Months	18 Months	24 Months
FY 96	1	0%	0%	0%	0%

A description was not available from DYRS for this program.

### MR Respite Care Felony Recidivism Rates

Time Period	N. Released	Months Since Release			
		6 Months	12 Months	18 Months	24 Months
FY 98	1	0%	0%	0%	0%

A description was not available from DYRS for this program.

### Northeast Treatment Center Felony Recidivism Rates

Time Period	N. Released	Months Since Release			
		6 Months	12 Months	18 Months	24 Months
FY 97	1	0%	0%	0%	0%
FY 98	1	100%	100%	100%	100%

A description was not available from DYRS for this program.

### Seton Villa Felony Recidivism Rates

Time Period	N. Released	Months Since Release			
		6 Months	12 Months	18 Months	24 Months
FY 98	1	0%	0%	0%	0%
FY 99	2	0%	0%	0%	0%

A description was not available from DYRS for this program.

Stepping Stones Felony Recidivism Rates

Time Period	N. Released	Months Since Release			
		6 Months	12 Months	18 Months	24 Months
FY 95	5	20%	20%	20%	20%
FY 96	5	60%	60%	60%	60%
FY 97	14	0%	21%	36%	36%
FY 98	9	22%	33%	33%	33%
FY 99	10	0%	30%	30%	40%
FY 00	3	67%	67%	67%	100%

Stepping Stones provides transitional independent living programming for adjudicated males 16 to 18 years of age.

Sisters Reaching for Excellence Felony Recidivism Rates

Time Period	N. Released	Months Since Release			
		6 Months	12 Months	18 Months	24 Months
FY 99	5	0%	40%	40%	40%
FY 00 1	1	0%	0%	0%	0%

A description was not available from DYRS for this program.

## Historical Recidivism Rates

Intentionally Blank