



**State of Delaware
Executive Department
Office of Management and Budget**

To: John Frazer
From: Jorge Rodríguez-Labarca
Date: April 28, 2010
Subject: First Quarter 2010 Stevenson House Status Report

On March 31, 2010, with a population of 26 the Stevenson House was 53 percent under capacity. The capacity of 55 beds was not exceeded.

Admissions: There were 62 admissions to the Stevenson House during the first quarter of 2010.

Admission demographics: Of the 62 admissions, 17 were females and 45 were males. During the first quarter 39 African Americans and 23 whites were admitted to the Stevenson House.

Leading charges at admission: The most frequent leading charges at admission for the first quarter were violation of probation, 12; burglary in the second degree, 8; and possession of a firearm during the commission of a felony, 4. Twenty-three youth, or 37 percent, were admitted to the Stevenson House for violent felonies.

Length of stay: There were 26 youth at the Stevenson House with an average length of stay (LOS) of 77 days and a maximum LOS of 277 days on March 31, 2010.

Of the 26 youth, there were 20 Family Court youth with an average LOS of 67 days, and 6 Superior Court youth with an average LOS of 107 days.

Snapshot demographics: Of the 26 youth on March 31, 3 were female and 23 were male. There were 20 African Americans and 6 whites.

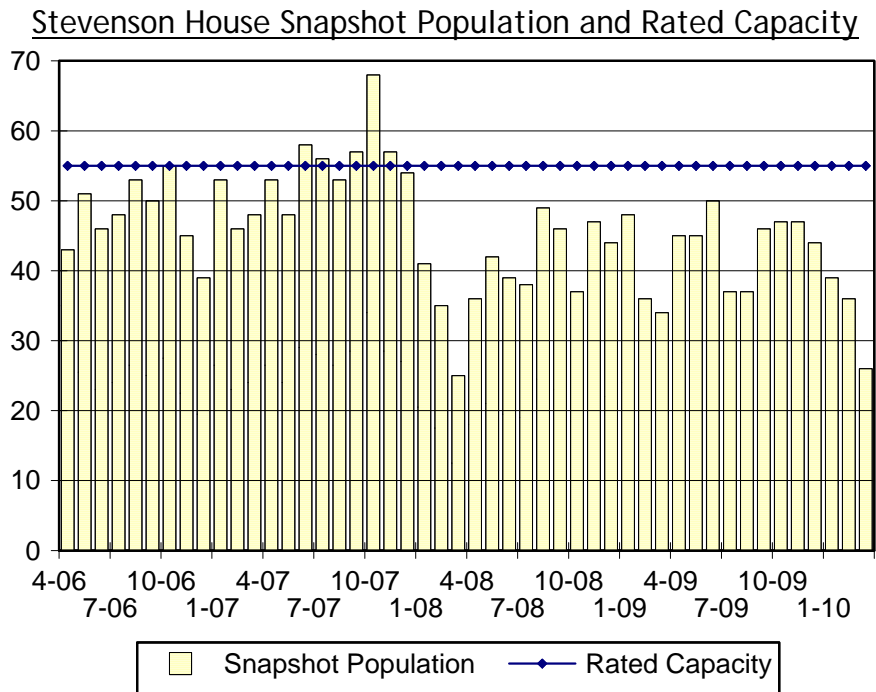
Youth's status: There were 21 detained and 5 adjudicated youth on March 31, 2010.

Releases: 81 youth were released during the first quarter of 2010 with an average LOS of 46 days, and a maximum of 486 days.



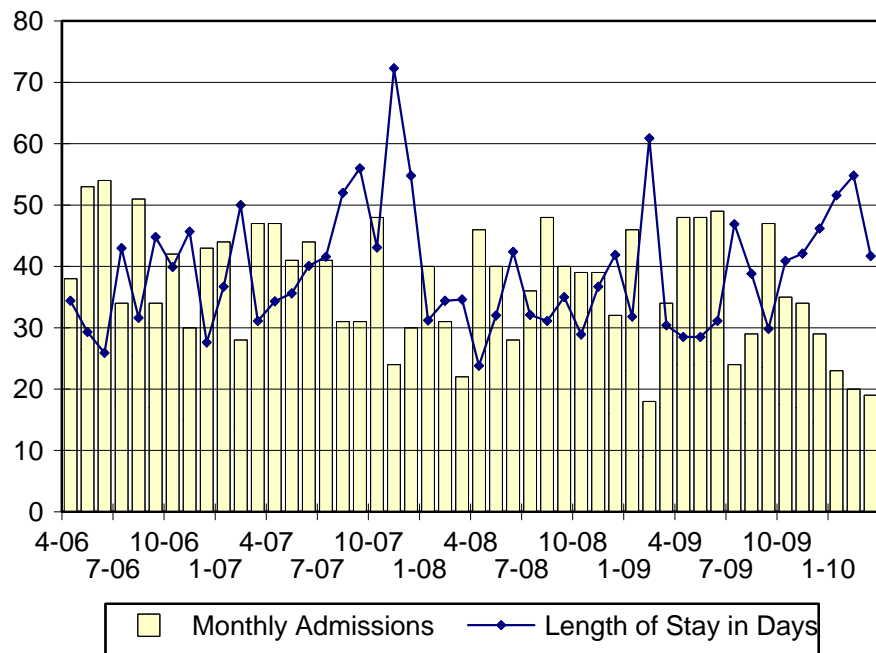
**Budget Development, Planning and Administration
Statistical Analysis Center**

410 Federal Street • Suite 6 • Dover, DE 19901
Phone: (302) 739-4626 • Fax: (302) 739-4630 • www.omb.delaware.gov



Snapshot populations are taken at the end of any given month.

Stevenson House Admissions And Time At Stevenson House



Length of Stay: Average length of stay in days at the Stevenson House given monthly admissions and populations.

Admissions, First Quarter 2010.

Month	Number	Percent
January	23	37
February	20	32
March	19	31
Total	62	100

Admission Demographics, First Quarter 2010.

Race/ethnicity and age	Gender		Total	
	Female	Male	Number	Percent
African American				
12	1	0	1	2
13	1	3	4	6
14	1	2	3	5
15	3	9	12	19
16	4	6	10	16
17	1	7	8	13
18	0	1	1	2
Subtotal	11	28	39	63
White				
12	0	1	1	2
13	1	1	2	3
15	0	3	3	5
16	3	6	9	15
17	1	6	7	12
18	1	0	1	2
Subtotal	6	16	23	37
Total	17	45	62	100

Admissions Profile for First Quarter 2010 Stevenson House Admittees.

Admissions	Youth			Admissions		
	Number	Percent	Cum. %	Number	Percent	Cum. %
Total	62	100%	100%	234	100%	100%
First admission	21	34%	34%	21	9%	9%
Multiple admissions	41	66%	66%	213	91%	91%
2 nd	13	21%	55%	26	11%	20%
3 rd	9	15%	69%	27	12%	32%
4 th	1	2%	71%	4	2%	33%
5 th	5	8%	79%	25	11%	44%
6 th	1	2%	81%	6	3%	47%
7 th	3	5%	85%	21	9%	56%
8 th	3	5%	90%	24	10%	66%
9 th	0	.	90%	0	.	66%
10 th	2	3%	94%	20	9%	74%
11 th	0	.	94%	0	.	74%
12 th	1	2%	95%	12	5%	79%
13 th	0	.	95%	0	.	79%
14 th	0	.	95%	0	.	79%
15 th	2	3%	98%	30	13%	92%
16 th	0	.	98%	0	.	92%
17 th	0	.	98%	0	.	92%
18 th	1	2%	100%	18	8%	100%

Note: First admission means that, heretofore, a juvenile had never been admitted to Secure Detention, residential Level III, Level IV, Level V, or Division of Family Services (DFS) and Child Mental Health (CMH) programs that provide residential services. Included in the count of multiple admissions are those admitted to Secure Detention, residential Level III, Level IV, Level V, and DFS and CMH programs that provide residential services which are classified by DSCYF as crisis bed; mental health; residential group care; treatment center; residential Interagency Collaborative Team; residential treatment, mental health; and residential treatment, substance abuse.

**Admission Profile by Dispositional
Level for First Quarter 2010 Stevenson House Admittees.**

Admissions	Number and percent of youth							
	Sec. Det.		L. V		L. IV		L. III	
	N.	%	N.	%	N.	%	N.	%
Total	62	100	62	100	62	100	62	100
No prior admissions	32	52	56	90	43	69	22	35
Multiple admissions	30	48	6	10	19	31	40	65
2 nd	14	23	3	5	3	5	7	11
3 rd	9	15	1	2	7	11	7	11
4 th	1	2	0	.	2	3	14	23
5 th	3	5	1	2	4	6	7	11
6 th	1	2	0	.	2	3	2	3
7 th	2	3	1	2	1	2	2	3
8 th	0	.	0	.	0	.	0	.
9 th	0	.	0	.	0	.	1	2

Note: Included in the count of multiple admissions are those admitted to Secure Detention (Sec. Det.), Level III, Level IV, Level V, and Division of Family Services and Child Mental Health programs that provide residential services which are classified by DSCYF as crisis bed; mental health; residential group care; treatment center; residential Interagency Collaborative Team; residential treatment, mental health; and residential treatment, substance abuse.

Reading this table: This table shows that 48 percent of youth admitted to the Stevenson House during the first quarter of 2010 had prior admissions to secure detention, 10 percent to Level V, 31 percent to Level IV, and 65 percent to Level III. Sixteen of the 32 youth without prior detention admissions had prior admissions to Levels III, IV and/or V.

Leading Charge at Admission, First Quarter 2010.

Detained felonies and misdemeanors, 10 Del.C. § 1007(a)(2)	Total	Gender		Minority	
		F	M	W	M
Assault in a detention facility causing injury	1	0	1	0	1
Assault in the second degree	1	1	0	0	1
Burglary in the second degree	7	0	7	1	6
Burglary in the third degree	2	0	2	2	0
Failure to register as a sex offender	1	0	1	1	0
Possession of a deadly weapon during the commission of a felony	3	2	1	3	0
Possession of a firearm during the commission of a felony	3	0	3	2	1
Possession with intent to deliver narcotics	1	0	1	0	1
Possession with intent to deliver non-narcotics	1	0	1	0	1
Rape in the first degree	1	0	1	0	1
Rape in the second degree	1	1	0	1	0
Robbery in the first degree, attempted	1	0	1	0	1
Theft of a motor vehicle	1	0	1	0	1
Trafficking in cocaine from 10 to 50 grams	1	1	0	0	1
Unlawful sexual contact in the third degree	1	0	1	0	1
Subtotal	26	5	21	10	16
Repeated failure to comply, 10 Del.C. § 1007(a)(4)					
Escape in the third degree	1	0	1	0	1
Subtotal	1	0	1	0	1
Administrative violations and holds					
Administrative hold, Aftercare revocation	1	1	0	1	0
Administrative hold, pending Aftercare revocation	1	0	1	1	0
Subtotal	2	1	1	2	0

Leading Charge at Admission, First Quarter 2010.

	Total	Gender		Minority	
		F	M	W	M
Detained admissions for charges not referenced in 10 Del.C. § 1007					
Civil contempt, juvenile fails to pay fines	1	1	0	0	1
Criminal contempt	1	0	1	0	1
Criminal impersonation	1	1	0	0	1
Offensive touching	1	1	0	1	0
Possession of drug paraphernalia	3	0	3	0	3
Shoplifting, misdemeanor	1	0	1	0	1
Terroristic threatening, misdemeanor	1	1	0	0	1
Theft, misdemeanor	1	0	1	1	0
Subtotal	10	4	6	2	8
Violation of probation pursuant to 11 Del.C. § 4334					
Violation of probation	6	2	4	1	5
Subtotal	6	2	4	1	5
Sentenced admissions pursuant to an adjudication					
Assault in the third degree	1	0	1	0	1
Burglary in the second degree	1	0	1	0	1
Conspiracy in the second degree	1	0	1	0	1
Drug court violation	3	1	2	3	0
Possession of a firearm during the commission of a felony	1	0	1	0	1
Shoplifting, misdemeanor	3	3	0	0	3
Unauthorized use of a motor vehicle	1	0	1	0	1
Violation of probation	6	1	5	4	2
Subtotal	17	2	12	7	10
Total	62	17	45	22	40

Crime Category at Admission, First Quarter 2010.

Category	Number	Percent
Violent felony	23	37
Violent misdemeanor	3	5
Nonviolent felony	5	8
Nonviolent misdemeanor	13	21
Unclassified misdemeanor	1	2
Drug Court violation	3	5
Probation violation	12	19
Administrative hold/Aftercare revocation	2	3
Total	62	100

While 12 youth were admitted solely for a violation of probation (VOP), another 10 had a VOP and an arrest for another crime. A total of 22 youth were charged with a VOP.

Length of Stay on March 31, 2010.

LOS in intervals	Youth	Length of Stay		
	Number	Average	Median	Maximum
1 to 3 days	4	2	2	3
4 to 14 days	2	7	7	8
15 to 29 days	6	18	18	22
30 to 59 days	5	48	51	56
60 to 119 days	3	107	112	115
120 to 179 days	3	158	173	173
180 plus days	3	277	277	277
Summary	26	77	39	277

Legal Status by Average LOS on March 31, 2010.

	Detained		Sentenced		Total	
	No.	LOS	No.	LOS	No.	LOS
Family Court	15	82	5	24	20	67
30 days or less	8	8	3	14	11	10
31 days or more	7	166	2	39	9	138
Superior Court	6	107	0	.	6	107
120 days or less	4	75	0	.	4	75
121 days or more	2	173	0	.	2	173
Total	21	89	5	24	26	77

Youth's Involvement on March 31, 2010.

Detained	Number	LOS in days
Aftercare	2	164
Probation	1	8
Serious Juvenile Offender and Comprehensive Aftercare Program	0	.
Division of Child Mental Health	1	277
Division of Family Services	0	.
Family Court detainees	15	82
Superior Court detainees	6	107
Sentenced		
Family Court	5	24
Superior Court	0	.

Population Demographics on March 31, 2010.

Race/ethnicity and age	Gender		Total	
	Female	Male	Number	Percent
African American				
13	1	4	5	19
14	0	2	2	8
15	1	4	5	19
16	0	3	3	12
17	0	5	5	19
Subtotal	2	18	20	77
White				
13	1	0	1	4
15	0	1	1	4
17	0	4	4	15
Subtotal	1	5	6	23
Total	3	23	26	100

Releases, First Quarter 2010.

To whom released/program	Number	Percent	<u>LOS in days</u>	
			Mean	Max.
Releases to the community				
Community Services, Abraxas III	1	1	22	22
Community Services, Abraxas IIIA	1	1	6	6
Community Services, Camelot, Non-Secure Detention	1	1	9	9
Community Services, G4S Justice Services, Inc., E.M.	1	1	17	17
Community Services, Moore Proactive Solutions, Non. Sec. Det.	1	1	56	56
Community Services, Peoples Place II, Non-Secure Det.	4	5	5	10
Community Services, Pressley Ridge Schools Of Maryland	1	1	65	65
Division of Family Services	1	1	10	10
Parent	21	26	28	121
Relative	1	1	49	49
Releases to the community subtotal	33	41	26	121
Releases to a secure placement				
Child Mental Health, Pyramid Quakertown	1	1	22	22
Community Services, Clarinda Academy	1	1	139	139
Community Services, Glen Mills Schools	3	4	41	46
Community Services, Sleepy Hollow Academy	1	1	71	71
Community Services, Southwest Indiana	2	2	258	486
Community Services, Stetson School, Inc.	1	1	31	31
Community Services, Today, Inc.	1	1	40	40
Community Services, University Behavioral Center	1	1	288	288
Community Services, Youth Services Agency	2	2	59	82
Department of Correction, General Population	1	1	42	42
Department of Correction, YCOP	2	2	120	126
Florida Authorities	1	1	43	43
YRS, Ferris School for Boys	11	14	37	81
YRS, Grace Cottage	3	4	46	113
YRS, Mowlds Cottage	2	2	23	43
YRS, New Castle County Detention Center	2	2	2	2
YRS, Snowden	13	16	50	89
Releases to a secure placement subtotal	48	59	61	486
Total releases	81	100	46	486

 Legal Status by Average LOS at Release, First Quarter 2010.

	<u>Detained</u>		<u>Sentenced</u>		<u>Total</u>	
	No.	LOS	No.	LOS	No.	LOS
Family Court	17	8	60	54	77	44
30 days or less	17	8	22	17	39	13
31 days or more	0	.	38	76	38	76
Superior Court	1	65	3	96	4	89
120 days or less	1	65	2	82	3	76
121 days or more	0	.	1	126	1	126
Total	18	12	63	56	81	46

 Crime Category at Release, First Quarter 2010.

Category	Number	Percent	<u>LOS in days</u>	
			Mean	Maximum
Violent felony	19	23	78	486
Violent misdemeanor	5	6	39	121
Non-violent felony	12	15	39	126
Non-violent misdemeanor	21	26	43	139
Unclassified misdemeanor	1	1	1	1
Unclassified violation	2	2	44	48
Drug Court violation	3	4	11	22
Probation violation	17	21	32	71
Administrative hold/Aftercare revocation	1	1	42	42
Total	81	100	46	486