



**State of Delaware
Executive Department
Office of Management and Budget**

To: John Frazer
From: Jorge Rodríguez-Labarca
Date: February 5, 2010
Subject: Fourth Quarter 2009 Stevenson House Status Report

On December 31, 2009, with a population of 44 the Stevenson House was 20 percent under capacity. The capacity of 55 beds was not exceeded.

Admissions: There were 98 admissions to the Stevenson House during the fourth quarter of 2009.

Admission demographics: Of the 98 admissions, 23 were females and 75 were males. During the fourth quarter 63 African Americans and 35 whites were admitted to the Stevenson House.

Leading charges at admission: The most frequent leading charges at admission for the fourth quarter were violation of probation, 21; burglary in the second degree, 8; and robbery in the first degree, 7. Thirty-nine youth, or 40 percent, were admitted to the Stevenson House for violent felonies.

Length of stay: There were 44 youth at the Stevenson House with an average length of stay (LOS) of 58 days and a maximum LOS of 423 days on December 31, 2009.

Of the 44 youth, there were 35 Family Court youth with an average LOS of 42 days, and 9 Superior Court youth with an average LOS of 121 days.

Snapshot demographics: Of the 44 youth on December 31, 7 were female and 37 were male. There were 30 African Americans and 14 whites.

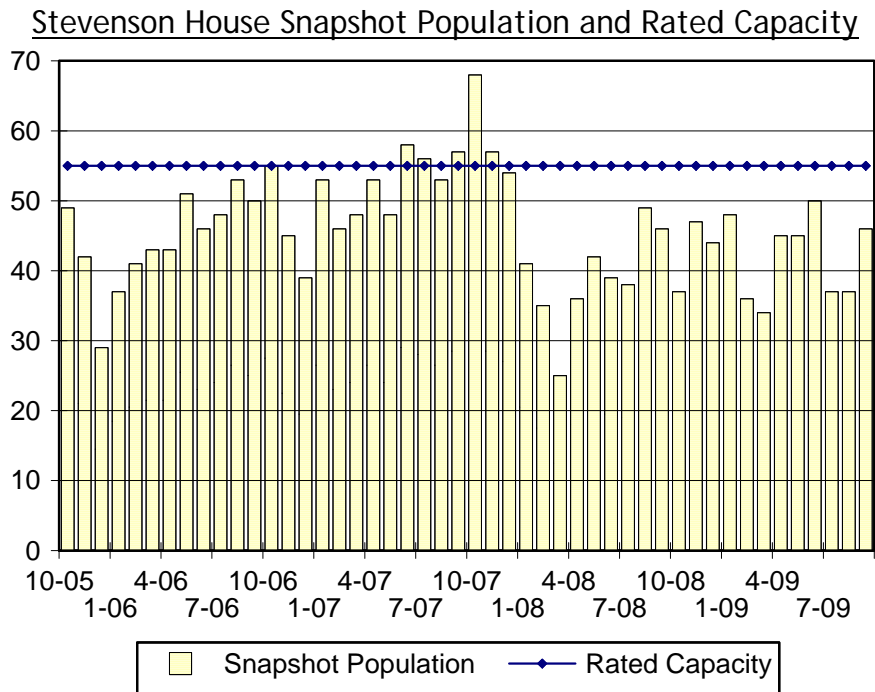
Youth's status: There were 31 detained and 11 adjudicated youth on December 31, 2009.

Releases: 97 youth were released during the fourth quarter of 2009 with an average LOS of 44 days, and a maximum of 287 days.



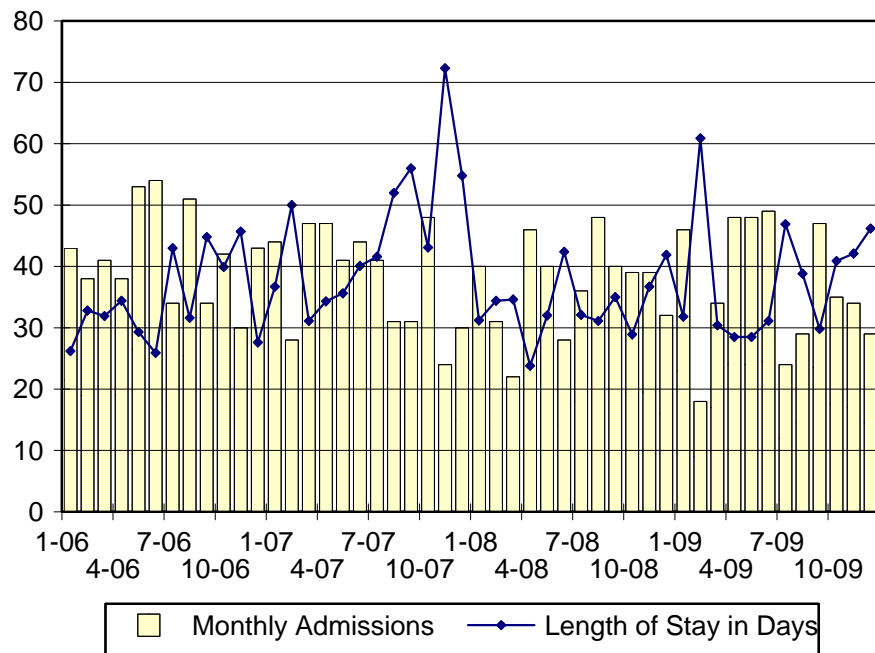
**Budget Development, Planning and Administration
Statistical Analysis Center**

410 Federal Street • Suite 6 • Dover, DE 19901
Phone: (302) 739-4626 • Fax: (302) 739-4630 • www.omb.delaware.gov



Snapshot populations are taken at the end of any given month.

Stevenson House Admissions And Time At Stevenson House



Length of Stay: Average length of stay in days at the Stevenson House given monthly admissions and populations.

Admissions, Fourth Quarter 2009.

Month	Number	Percent
November	35	36
October	34	35
December	29	30
Total	98	100

Admission Demographics, Fourth Quarter 2009.

Race/ethnicity and age	Gender		Total	
	Female	Male	Number	Percent
African American				
11	0	1	1	1
13	1	0	1	1
14	3	5	8	8
15	3	9	12	12
16	1	15	16	16
17	3	21	24	24
18	0	1	1	1
Subtotal	11	52	63	64
White				
12	0	1	1	1
14	0	2	2	2
15	4	6	10	10
16	1	3	4	4
17	7	10	17	17
18	0	1	1	1
Subtotal	12	23	35	36
Total	23	75	98	100

Admissions Profile for Fourth Quarter 2009 Stevenson House Admittees.

Admissions	Youth			Admissions		
	Number	Percent	Cum. %	Number	Percent	Cum. %
Total	98	100%	100%	437	100%	100%
First admission	32	33%	33%	32	7%	7%
Multiple admissions	66	67%	67%	405	93%	93%
2 nd	12	12%	45%	24	5%	13%
3 rd	12	12%	57%	36	8%	21%
4 th	6	6%	63%	24	5%	27%
5 th	7	7%	70%	35	8%	35%
6 th	10	10%	81%	60	14%	48%
7 th	5	5%	86%	35	8%	56%
8 th	2	2%	88%	16	4%	60%
9 th	1	1%	89%	9	2%	62%
10 th	2	2%	91%	20	5%	67%
11 th	2	2%	93%	22	5%	72%
12 th	3	3%	96%	36	8%	80%
13 th	0	.	96%	0	.	80%
14 th	1	1%	97%	14	3%	83%
15 th	0	.	97%	0	.	83%
16 th	1	1%	98%	16	4%	87%
17 th	1	1%	99%	17	4%	91%
...	0	.	99%	0	.	91%
41 st	1	1%	100%	41	9%	100%

Note: First admission means that, heretofore, a juvenile had never been admitted to Secure Detention, residential Level III, Level IV, Level V, or Division of Family Services (DFS) and Child Mental Health (CMH) programs that provide residential services. Included in the count of multiple admissions are those admitted to Secure Detention, residential Level III, Level IV, Level V, and DFS and CMH programs that provide residential services which are classified by DSCYF as crisis bed; mental health; residential group care; treatment center; residential Interagency Collaborative Team; residential treatment, mental health; and residential treatment, substance abuse.

**Admission Profile by Dispositional
Level for Fourth Quarter 2009 Stevenson House Admittees.**

Admissions	Number and percent of youth							
	Sec. Det.		L. V		L. IV		L. III	
	N.	%	N.	%	N.	%	N.	%
Total	98	100	98	100	98	100	98	100
No prior admissions	40	41	84	86	66	67	35	36
Multiple admissions	58	59	14	14	32	33	63	64
2 nd	26	27	4	4	5	5	22	22
3 rd	21	21	6	6	14	14	20	20
4 th	4	4	2	2	6	6	14	14
5 th	4	4	1	1	2	2	1	1
6 th	2	2	0	.	3	3	5	5
7 th	0	.	0	.	1	1	1	1
8 th	0	.	1	1	1	1	0	.
9 th	0	.	0	.	0	.	0	.
10 th	0	.	0	.	0	.	0	.
11 th	1	1	0	.	0	.	0	.

Note: Included in the count of multiple admissions are those admitted to Secure Detention (Sec. Det.), Level III, Level IV, Level V, and Division of Family Services and Child Mental Health programs that provide residential services which are classified by DSCYF as crisis bed; mental health; residential group care; treatment center; residential Interagency Collaborative Team; residential treatment, mental health; and residential treatment, substance abuse.

Reading this table: This table shows that 59 percent of youth admitted to the Stevenson House Stevenson House during the fourth quarter of 2009 had prior admissions to secure detention, 14 percent to Level V, 33 percent to Level IV, and 64 percent to Level III. Sixteen of the 40 youth without prior detention admissions had prior admissions to Levels III, IV and/or V.

Leading Charge at Admission, Fourth Quarter 2009.

Detained felonies and misdemeanors, 10 Del.C. § 1007(a)(2)	Total	Gender		Minority	
		F	M	W	M
Assault in a detention facility, causing injury	1	0	1	0	1
Assault in the third degree	1	1	0	0	1
Burglary in the second degree	7	2	5	3	4
Burglary in the second degree, attempted	1	0	1	0	1
Burglary in the third degree	5	1	4	5	0
Burglary in the third degree, attempted	1	0	1	0	1
Carrying a concealed deadly weapon	1	0	1	1	0
Failure to register as a sex offender	1	0	1	1	0
Menacing, aggravated	2	0	2	1	1
Possession of a deadly weapon during the commission of a felony	4	0	4	1	3
Possession of a firearm during the commission of a felony	4	0	4	0	4
Possession of burglar's tools	1	0	1	0	1
Possession with intent to deliver non-narcotics	1	0	1	0	1
Rape in the first degree, attempted	1	0	1	1	0
Rape in the second degree	1	0	1	0	1
Robbery in the first degree	7	0	7	1	6
Robbery in the first degree, attempted	1	0	1	0	1
Theft of a motor vehicle	2	0	2	1	1
Theft under \$1,000 where the victim is 62 years of age older	1	1	0	1	0
Unlawful sexual contact in the third degree	1	1	0	0	1
Unlawful sexual contact in the second degree	2	0	2	1	1
Subtotal	46	6	40	17	29
Failure to appear, 10 Del.C. § 1007(a)(3)					
Failure to appear in court	3	2	1	0	3
Subtotal	3	2	1	0	3
Administrative violations and holds					
Internal transfer	1	0	1	0	1
Subtotal	1	0	1	0	1

Leading Charge at Admission, Fourth Quarter 2009.

Detained admissions for charges not referenced in 10 Del.C. § 1007 Total	Gender		Minority	
	F	M	W	M
Civil contempt, juvenile fails to pay fines	1	0	1	0
Conspiracy in the third degree	1	1	0	1
Criminal impersonation	1	0	1	0
Escape in the third degree	1	1	0	1
Offensive touching	3	2	1	2
Possession of drug paraphernalia	1	0	1	0
Resisting arrest	1	0	1	0
Subtotal	9	4	5	3
Violation of probation pursuant to 11 Del.C. § 4334				
Violation of probation	9	5	4	5
Subtotal	9	5	4	5
Sentenced admissions pursuant to an adjudication				
Burglary in the second degree	1	0	1	0
Burglary in the third degree	1	0	1	1
Conspiracy in the second degree	1	0	1	0
Criminal contempt	1	0	1	0
Criminal trespassing in the first degree	1	1	0	0
Criminal trespassing in the third degree	1	0	1	0
Drug Court violation	3	2	1	2
Forgery in the second degree	1	0	1	0
Menacing, aggravated	1	0	1	1
Possession of a firearm during the commission of a felony	1	0	1	0
Possession of a weapon in a safe school zone	1	0	1	0
Possession with intent to deliver non-narcotics	1	0	1	1
Robbery in the second degree	3	0	3	0
Theft of a motor vehicle	1	0	1	0
Violation of probation	12	3	9	5
Subtotal	30	6	24	10
Total	98	23	75	35

Crime Category at Admission, Fourth Quarter 2009.

<u>Category</u>	<u>Number</u>	<u>Percent</u>
Violent felony	39	40
Violent misdemeanor	2	2
Nonviolent felony	17	17
Nonviolent misdemeanor	13	13
Unclassified misdemeanor	1	1
Unclassified violations	1	1
Drug Court violation	3	3
Probation violation	21	21
Administrative hold/Aftercare revocation	1	1
Total	98	100

While 21 youth were admitted solely for a violation of probation (VOP), another 11 had a VOP and an arrest for another crime. A total of 32 youth were charged with a VOP.

Length of Stay on December 31, 2009.

<u>LOS in intervals</u>	<u>Youth</u>			
	<u>Number</u>	<u>Length of Stay</u>		
		<u>Average</u>	<u>Median</u>	<u>Maximum</u>
1 to 3 days	2	3	3	3
4 to 14 days	3	6	4	9
15 to 29 days	16	21	21	25
30 to 59 days	10	42	42	53
60 to 119 days	8	77	73	87
120 to 179 days	0	.	.	.
180 plus days	5	237	187	423
Summary	44	58	33	423

Legal Status by Average LOS on December 31, 2009.

	<u>Detained</u>		<u>Sentenced</u>		<u>Total</u>	
	<u>No.</u>	<u>LOS</u>	<u>No.</u>	<u>LOS</u>	<u>No.</u>	<u>LOS</u>
Family Court	22	54	13	22	35	42
30 days or less	10	19	10	14	20	16
31 days or more	12	83	3	49	15	76
Superior Court	9	121	0	.	9	121
120 days or less	5	66	0	.	5	66
121 days or more	4	190	0	.	4	190
Total	31	73	13	22	44	58

Youth's Involvement on December 31, 2009.

Detained	Number	LOS in days
Aftercare	8	103
Probation	6	116
Serious Juvenile Offender and Comprehensive Aftercare Program	2	85
Division of Child Mental Health	1	53
Division of Family Services	2	63
Family Court detainees	22	54
Superior Court detainees	9	121
Sentenced		
Family Court	13	22
Superior Court	0	.

Population Demographics on December 31, 2009.

Race/ethnicity and age	Gender		Total	
	Female	Male	Number	Percent
African American				
13	0	2	2	5
14	3	4	7	16
15	1	6	7	16
16	0	7	7	16
17	1	6	7	16
Subtotal	5	25	30	68
White				
14	0	1	1	2
15	0	4	4	9
16	0	1	1	2
17	2	5	7	16
18	0	1	1	2
Subtotal	2	12	14	32
Total	7	37	44	100

Releases, Fourth Quarter 2009.

To whom released/program	Number	Percent	LOS in days	
			Mean	Max.
Releases to the community				
Community Services, Abraxas III, General Home Services	1	1	16	16
Community Services, Abraxas IIIA, Intensive Services	2	2	12	21
Community Services, Abraxas, Electronic Monitoring	2	2	25	48
Community Services, Camelot, Shelter	1	1	13	13
Community Services, G4s Justice Services, Inc., E. M.	3	3	26	41
Community Services, Moore Proactive Solutions, Non-Sec. Det.	1	1	1	1
Community Services, Peoples Place II	1	1	15	15
Community Services, Peoples Place II, Non-Secure Det.	4	4	3	4
Community Services, Psychiatric Children's Srv., M.S.T.	1	1	42	42
Parent	24	25	38	166
Relative	3	3	26	72
Releases to the community subtotal	43	44	29	166
Releases to a secure placement				
Community Services, Cove P.R.E.P.	1	1	41	41
Community Services, Glen Mills Schools	1	1	54	54
Community Services, Mountain Manor Treatment Center	2	2	46	90
Community Services, Springfield Academy	1	1	106	106
Community Services, Stetson School, Inc.	1	1	33	33
Community Services, Today, Inc.	1	1	15	15
Community Services, Youth Services Agency	1	1	39	39
Department of Correction, Young Criminal Offenders Program	4	4	182	287
U.S. Immigration and Customs Enforcement Bureau	1	1	5	5
West Virginia authorities	1	1	8	8
YRS, Ferris School for Boys	11	11	79	241
YRS, Grace Cottage	7	7	15	35
YRS, Mowlds Cottage	3	3	18	21
YRS, New Castle County Detention Center	9	9	61	223
YRS, Snowden	10	10	37	72
Releases to a secure placement subtotal	53	55	58	287
Total releases	97	100	44	287

Legal Status by Average LOS at Release, Fourth Quarter 2009.

	<u>Detained</u>		<u>Sentenced</u>		<u>Total</u>	
	No.	LOS	No.	LOS	No.	LOS
Family Court	28	24	60	43	88	37
30 days or less	22	4	29	16	51	10
31 days or more	6	97	31	68	37	73
Superior Court	3	177	6	91	9	120
120 days or less	1	82	4	66	5	69
121 days or more	2	224	2	142	4	183
Total	31	39	66	47	97	44

Crime Category at Release, Fourth Quarter 2009.

Category	Number	Percent	<u>LOS in days</u>	
			Mean	Maximum
Violent felony	34	35	50	287
Violent misdemeanor	6	6	78	241
Non-violent felony	15	15	73	166
Non-violent misdemeanor	17	18	34	106
Unclassified misdemeanor	1	1	5	5
Unclassified violation	1	1	28	28
Drug Court violation	3	3	26	69
Probation violation	19	20	20	63
Administrative hold/Aftercare revocation	1	1	8	8
Total	97	100	44	287