



**State of Delaware  
Executive Department  
Office of Management and Budget**

**To:** John Frazer  
**From:** Jorge Rodríguez-Labarca  
**Date:** October 27, 2009  
**Subject:** Second Quarter 2009 Stevenson House Status Report

---

On June 30, 2009, with a population of 50 the Stevenson House was 9 percent under capacity. The capacity of 55 beds was not exceeded.

*Admissions:* There were 145 admissions to the Stevenson House during the second quarter of 2009.

*Admission demographics:* Of the 145 admissions, 43 were females and 102 were males. During the second quarter 85 African Americans, 59 whites and one Hispanic were admitted to the Stevenson House.

*Leading charges at admission:* The most frequent leading charges at admission for the second quarter were violation of probation, 28; robbery in the first degree, 16; and, burglary in the second degree, 9. Forty-seven youth, or 32 percent, were admitted to the Stevenson House for violent felonies.

*Length of stay:* There were 50 youth at the Stevenson House with an average length of stay (LOS) of 51 days and a maximum LOS of 272 days on June 30, 2009.

Of the 50 youth, there were 40 Family Court youth with an average LOS of 37 days, and 10 Superior Court youth with an average LOS of 107 days.

*Snapshot demographics:* Of the 50 youth on June 30, 8 were female and 42 were male. There were 36 African Americans, 14 whites, and one Hispanic.

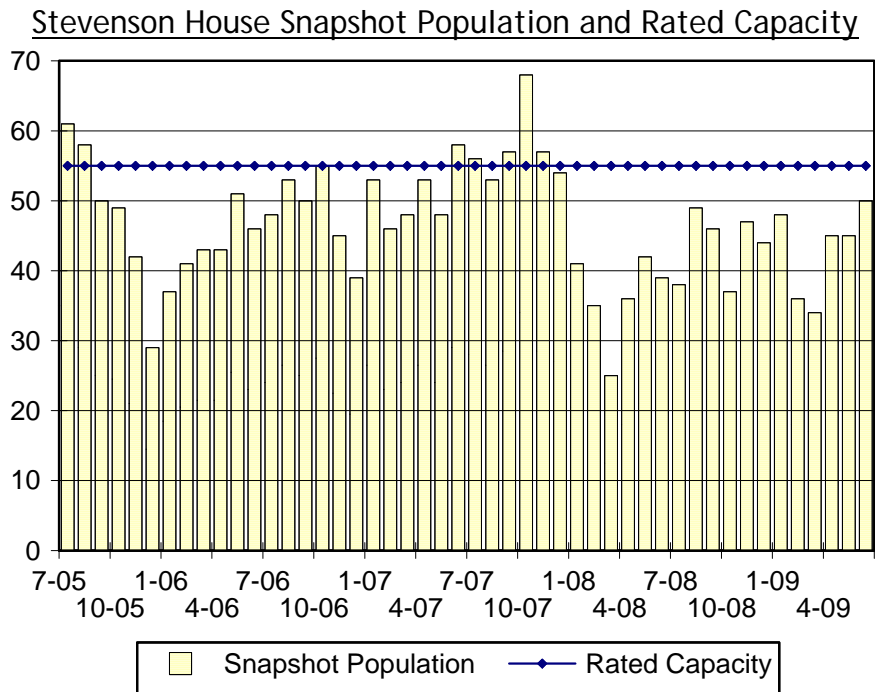
*Youth's status:* There were 38 detained and 12 adjudicated youth on June 30, 2009.

*Releases:* 132 youth were released during the second quarter of 2009 with an average LOS of 27 days, and a maximum of 176 days.



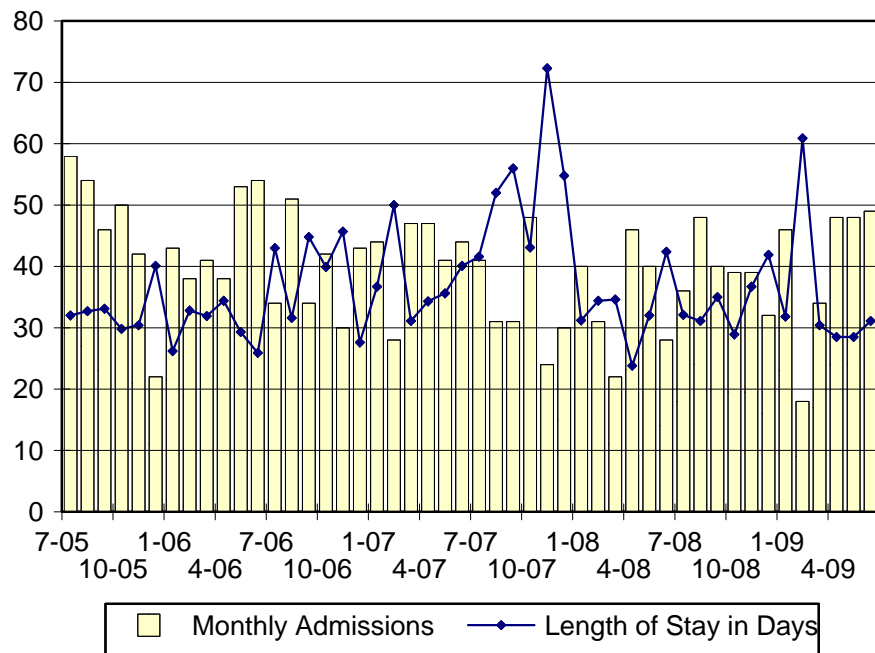
**Budget Development, Planning and Administration  
Statistical Analysis Center**

410 Federal Street • Suite 6 • Dover, DE 19901  
Phone: (302) 739-4626 • Fax: (302) 739-4630 • [www.omb.delaware.gov](http://www.omb.delaware.gov)



Snapshot populations are taken at the end of any given month.

### Stevenson House Admissions And Time At Stevenson House



Length of Stay: Average length of stay in days at the Stevenson House given monthly admissions and populations.

Admissions, Second Quarter 2009.

Month	Number	Percent
April	48	33
May	48	33
June	49	34
Total	145	100

Admission Demographics, Second Quarter 2009.

Race/ethnicity and age	Gender		Total	
	Female	Male	Number	Percent
African American				
11	0	1	1	1
12	0	2	2	1
13	0	9	9	6
14	4	7	11	8
15	14	12	26	18
16	4	10	14	10
17	3	17	20	14
18	1	1	2	1
Subtotal	26	59	85	59
Hispanic				
15	0	1	1	1
Subtotal	0	1	1	1
White				
12	0	1	1	1
13	0	1	1	1
14	1	4	5	3
15	4	10	14	10
16	4	14	18	12
17	8	10	18	12
18	0	2	2	1
Subtotal	17	42	59	41
Total	43	102	145	100

Admissions Profile for Second Quarter 2009 Stevenson House Admittees.

Admissions	Youth			Admissions		
	Number	Percent	Cum. %	Number	Percent	Cum. %
Total	145	100%	100%	516	100%	100%
First admission	56	39%	39%	56	11%	11%
Multiple admissions	89	61%	61%	460	89%	89%
2 <sup>nd</sup>	28	19%	58%	56	11%	22%
3 <sup>rd</sup>	13	9%	67%	39	8%	29%
4 <sup>th</sup>	11	8%	74%	44	9%	38%
5 <sup>th</sup>	6	4%	79%	30	6%	44%
6 <sup>th</sup>	11	8%	86%	66	13%	56%
7 <sup>th</sup>	4	3%	89%	28	5%	62%
8 <sup>th</sup>	0	.	89%	0	.	62%
9 <sup>th</sup>	3	2%	91%	27	5%	67%
10 <sup>th</sup>	6	4%	95%	60	12%	79%
11 <sup>th</sup>	1	1%	96%	11	2%	81%
12 <sup>th</sup>	0	.	96%	0	.	81%
13 <sup>th</sup>	1	1%	97%	13	3%	83%
14 <sup>th</sup>	0	.	97%	0	.	83%
15 <sup>th</sup>	1	1%	97%	15	3%	86%
16 <sup>th</sup>	1	1%	98%	16	3%	89%
17 <sup>th</sup>	1	1%	99%	17	3%	93%
18 <sup>th</sup>	1	1%	99%	18	3%	96%
19 <sup>th</sup>	0	.	99%	0	.	96%
20 <sup>th</sup>	1	1%	100%	20	4%	100%

Note: First admission means that, heretofore, a juvenile had never been admitted to Secure Detention, residential Level III, Level IV, Level V, or Division of Family Services (DFS) and Child Mental Health (CMH) programs that provide residential services. Included in the count of multiple admissions are those admitted to Secure Detention, residential Level III, Level IV, Level V, and DFS and CMH programs that provide residential services which are classified by DSCYF as crisis bed; mental health; residential group care; treatment center; residential Interagency Collaborative Team; residential treatment, mental health; and residential treatment, substance abuse.

**Admission Profile by Dispositional  
Level for Second Quarter 2009 Stevenson House Admittees.**

Admissions	Number and percent of youth							
	Sec. Det.		L. V		L. IV		L. III	
	N.	%	N.	%	N.	%	N.	%
Total	145	100	145	100	145	100	145	100
No prior admissions	86	59	125	86	102	70	55	38
Multiple admissions	59	41	20	14	43	30	90	62
2 <sup>nd</sup>	34	23	10	7	9	6	40	28
3 <sup>rd</sup>	8	6	6	4	17	12	22	15
4 <sup>th</sup>	7	5	2	1	9	6	13	9
5 <sup>th</sup>	5	3	1	1	1	1	6	4
6 <sup>th</sup>	4	3	1	1	2	1	5	3
7 <sup>th</sup>	0	.	0	.	3	2	2	1
8 <sup>th</sup>	1	1	0	.	0	.	1	1
9 <sup>th</sup>	0	.	0	.	1	1	1	1
10 <sup>th</sup>	0	.	0	.	1	1	0	.

Note: Included in the count of multiple admissions are those admitted to Secure Detention (Sec. Det.), Level III, Level IV, Level V, and Division of Family Services and Child Mental Health programs that provide residential services which are classified by DSCYF as crisis bed; mental health; residential group care; treatment center; residential Interagency Collaborative Team; residential treatment, mental health; and residential treatment, substance abuse.

Reading this table: This table shows that 41 percent of youth admitted to the Stevenson House Stevenson House during the second quarter of 2009 had prior admissions to secure detention, 14 percent to Level V, 30 percent to Level IV, and 62 percent to Level III. Forty-four of the 59 youth without prior detention admissions had prior admissions to Levels III, IV and/or V.

Leading Charge at Admission, Second Quarter 2009.

Detained felonies and misdemeanors, 10 Del.C. § 1007(a)(2)	Total	Gender		Minority	
		F	M	W	M
Arson in the first degree	1	0	1	0	1
Assault in a detention facility, causing injury	1	1	0	0	1
Assault in the second degree	1	0	1	1	0
Assault in the third degree	5	4	1	2	3
Breach of conditions of release, felony	1	0	1	0	1
Burglary in the second degree	6	1	5	2	4
Burglary in the third degree	4	0	4	0	4
Carrying a concealed deadly weapon	3	0	3	3	0
Escape in the second degree	1	0	1	1	0
Forgery in the second degree	1	0	1	0	1
Identity theft	3	2	1	2	1
Menacing, aggravated	4	0	4	3	1
Possession of a deadly weapon during the commission of a felony	3	1	2	1	2
Possession of a firearm during the commission of a felony	1	0	1	0	1
Possession of a weapon in a safe school zone	1	0	1	0	1
Possession with intent to deliver a schedule III, IV or V narcotic	1	1	0	1	0
Possession with intent to deliver non-narcotics	1	0	1	0	1
Rape in the first degree	1	0	1	0	1
Rape in the second degree	4	1	3	1	3
Resisting arrest with force or violence, class G felony	2	1	1	1	1
Robbery in the first degree	16	2	14	4	12
Robbery in the first degree, attempted	1	0	1	1	0
Robbery in the second degree	2	0	2	0	2
Shoplifting, felony	2	2	0	0	2
<b>Subtotal</b>	<b>66</b>	<b>16</b>	<b>50</b>	<b>23</b>	<b>43</b>
<b>Failure to appear, 10 Del.C. § 1007(a)(3)</b>					
Failure to appear in court	2	1	1	2	0
<b>Subtotal</b>	<b>2</b>	<b>1</b>	<b>1</b>	<b>2</b>	<b>0</b>
<b>Administrative violations and holds</b>					
Administrative hold	1	0	1	0	1
Administrative hold, Aftercare revocation	3	0	3	2	1
Internal transfer	1	1	0	0	1
<b>Subtotal</b>	<b>5</b>	<b>1</b>	<b>4</b>	<b>2</b>	<b>3</b>

## Leading Charge at Admission, Second Quarter 2009.

	Total	Gender		Minority	
		F	M	W	M
Detained admissions for charges not referenced in 10 Del.C. § 1007					
Civil contempt, juvenile fails to pay fines	1	0	1	1	0
Conspiracy in the third degree	1	1	0	0	1
Criminal mischief, unclassified misdemeanor	1	1	0	1	0
Escape in the third degree	2	1	1	0	2
Offensive touching	5	0	5	1	4
Possession of drug paraphernalia	2	1	1	2	0
Possession or use of a non-narcotic	1	1	0	0	1
Reckless endangering in the second degree	1	0	1	1	0
Resisting arrest	4	2	2	1	3
Shoplifting, misdemeanor	1	1	0	0	1
Terroristic threatening, misdemeanor	2	1	1	0	2
Theft, misdemeanor	2	1	1	1	1
Truancy, fail to attend school	1	1	0	1	0
Unauthorized use of a motor vehicle	2	1	1	0	2
Subtotal	26	12	14	9	17
Violation of probation pursuant to 11 Del.C. § 4334					
Violation of probation	16	9	7	6	10
Subtotal	16	9	7	6	10
Sentenced admissions pursuant to an adjudication					
Acquire or attempt to obtain a controlled substance by robbery, burglary or theft	1	0	1	1	0
Burglary in the second degree	3	0	3	2	1
Criminal contempt	1	0	1	1	0
Drug court violation	5	1	4	5	0
Offensive touching	1	0	1	1	0
Possession of burglar's tools	1	0	1	0	1
Possession or use of a non-narcotic	1	0	1	0	1
Possession with intent to deliver non-narcotics	1	0	1	0	1
Terroristic threatening, misdemeanor	1	0	1	1	0
Unlawful sexual contact in the third degree	3	0	3	2	1
Violation of probation	12	3	9	4	8
Subtotal	30	4	26	17	13
Total	145	43	102	59	86

### Crime Category at Admission, Second Quarter 2009.

<u>Category</u>	<u>Number</u>	<u>Percent</u>
Violent felony	47	32
Violent misdemeanor	12	8
Nonviolent felony	20	14
Nonviolent misdemeanor	26	18
Unclassified misdemeanor	2	1
Drug Court violation	5	3
Probation violation	28	19
Administrative hold/Aftercare revocation	5	3
<b>Total</b>	<b>145</b>	<b>100</b>

While 28 youth were admitted solely for a violation of probation (VOP), another 8 had a VOP and an arrest for another crime. A total of 36 youth were charged with a VOP.

### Length of Stay on June 30, 2009.

<u>LOS in intervals</u>	<u>Youth</u>	<u>Length of Stay</u>		
	<u>Number</u>	<u>Average</u>	<u>Median</u>	<u>Maximum</u>
1 to 3 days	6	2	3	3
4 to 14 days	10	9	7	12
15 to 29 days	12	22	23	29
30 to 59 days	10	38	38	48
60 to 119 days	6	84	83	97
120 to 179 days	2	159	159	176
180 plus days	4	243	242	272
<b>Summary</b>	<b>50</b>	<b>51</b>	<b>26</b>	<b>272</b>

### Legal Status by Average LOS on June 30, 2009.

	<u>Detained</u>		<u>Sentenced</u>		<u>Total</u>	
	<u>No.</u>	<u>LOS</u>	<u>No.</u>	<u>LOS</u>	<u>No.</u>	<u>LOS</u>
Family Court	28	43	12	23	40	37
30 days or less	18	10	10	21	28	14
31 days or more	10	102	2	33	12	90
Superior Court	10	107	0	.	10	107
120 days or less	6	50	0	.	6	50
121 days or more	4	193	0	.	4	193
<b>Total</b>	<b>38</b>	<b>60</b>	<b>12</b>	<b>23</b>	<b>50</b>	<b>51</b>



Youth's Involvement on June 30, 2009.

Detained	Number	LOS in days
Aftercare	14	77
Probation	12	25
Serious Juvenile Offender and Comprehensive Aftercare Program	3	110
Division of Child Mental Health	9	63
Division of Family Services	3	76
Family Court detainees	28	43
Superior Court detainees	10	107
<b>Sentenced</b>		
Family Court	12	23
Superior Court	0	.

Population Demographics on June 30, 2009.

Race/ethnicity and age	Gender		Total	
	Female	Male	Number	Percent
African American				
13	0	5	5	10
14	1	4	5	10
15	4	4	8	16
16	1	7	8	16
17	0	10	10	20
Subtotal	6	30	36	72
Hispanic				
15	0	1	1	1
Subtotal	0	1	1	1
White				
15	0	4	4	8
16	1	5	6	12
17	1	3	4	8
Subtotal	2	12	14	28
Total	8	42	50	100

Releases, Second Quarter 2009.

To whom released/program	Number	Percent	<u>LOS in days</u>	
			Mean	Max.
<b>Releases to the community</b>				
Community Services, Abraxas III, General Home Services	2	2	14	14
Community Services, Abraxas IIIA	1	1	12	12
Community Services, Abraxas, Electronic Monitoring	2	2	7	12
Community Services, Camelot, Non-Secure Detention	6	5	3	7
Community Services, Camelot, Shelter	2	2	5	6
Community Services, G4S Justice Services, Inc., E. M.	3	2	12	29
Community Services, Peoples Place II, Non-Secure Detention	11	8	9	45
Community Services, Peoples Place II, Shelter	2	2	4	5
Community Services, Sentinel, Passive GPS Tracking	2	2	26	48
Community Services, VisionQuest, FCIM	1	1	6	6
Division of Family Services	3	2	14	20
Division of Family Services, Children and Families First, Shelter	1	1	23	23
Division of Family Services, Peoples Place II	1	1	161	161
Parent	37	28	22	121
Relative	4	3	11	22
Self	1	1	20	20
<b>Releases to the community subtotal</b>	<b>79</b>	<b>60</b>	<b>18</b>	<b>161</b>
<b>Releases to a secure placement</b>				
Community Services, Diversified Treatment Alternatives	1	1	29	29
Community Services, Hennepin County Home School	1	1	3	3
Community Services, Mountain Manor Treatment Center	5	4	20	34
Community Services, Southwest Indiana Regional Youth Village	1	1	82	82
Community Services, VisionQuest, Lady of the Lakes	1	1	103	103
Department of Correction, General Population	1	1	29	29
Department of Correction, YCOP	3	2	150	176
Division of Child Mental Health, Terry Children's Psychiatric Center	1	1	21	21
Pennsylvania Authorities	1	1	2	2
YRS, Ferris School for Boys	14	11	54	142
YRS, Grace Cottage	7	5	28	93
YRS, Mowlds Cottage	3	2	27	33
YRS, New Castle County Detention Center	2	2	16	28
YRS, Snowden	12	9	20	30
<b>Releases to a secure placement subtotal</b>	<b>53</b>	<b>40</b>	<b>40</b>	<b>176</b>
<b>Total releases</b>	<b>132</b>	<b>100</b>	<b>27</b>	<b>176</b>

Legal Status by Average LOS at Release, Second Quarter 2009.

	<u>Detained</u>		<u>Sentenced</u>		<u>Total</u>	
	No.	LOS	No.	LOS	No.	LOS
Family Court	55	11	70	32	125	23
30 days or less	51	6	44	17	95	11
31 days or more	4	70	26	59	30	60
Superior Court	4	51	3	150	7	93
120 days or less	4	51	0	.	4	51
121 days or more	0	.	3	150	3	150
Total	59	14	73	37	132	27

Crime Category at Release, Second Quarter 2009.

<u>Category</u>	<u>Number</u>	<u>Percent</u>	<u>LOS in days</u>	
			<u>Mean</u>	<u>Maximum</u>
Violent felony	29	22	50	176
Violent misdemeanor	13	10	15	31
Non-violent felony	11	8	23	51
Non-violent misdemeanor	46	35	25	161
Unclassified misdemeanor	2	2	1	1
Drug Court violation	5	4	8	17
Probation violation	24	18	16	53
Administrative hold/Aftercare revocation	2	2	12	21
Total	132	100	27	176