



**State of Delaware  
Executive Department  
Office of Management and Budget**

**To:** John Frazer  
**From:** Jorge Rodríguez-Labarca  
**Date:** August 10, 2009  
**Subject:** First Quarter 2009 Stevenson House Status Report

---

On March 31, 2009, with a population of 44 the Stevenson House was 20 percent under capacity. The capacity of 55 beds was not exceeded.

*Admissions:* There were 98 admissions to the Stevenson House during the first quarter of 2009.

*Admission demographics:* Of the 98 admissions, 22 were females and 76 were males. During the first quarter 57 African Americans, 40 whites and one Hispanic were admitted to the Stevenson House.

*Leading charges at admission:* The most frequent leading charges at admission for the first quarter were violation of probation, 15; possession of a deadly weapon during the commission of a felony, 6. Twenty-four youth, or 24 percent, were admitted to the Stevenson House for violent felonies.

*Length of stay:* There were 34 youth at the Stevenson House with an average length of stay (LOS) of 54 days and a maximum LOS of 181 days on March 31, 2009.

Of the 34 youth, there were 26 Family Court youth with an average LOS of 40 days, and 8 Superior Court youth with an average LOS of 101 days.

*Snapshot demographics:* Of the 34 youth on March 31, 5 were female and 29 were male. There were 19 African Americans, 13 whites, one Asian American, and one Hispanic.

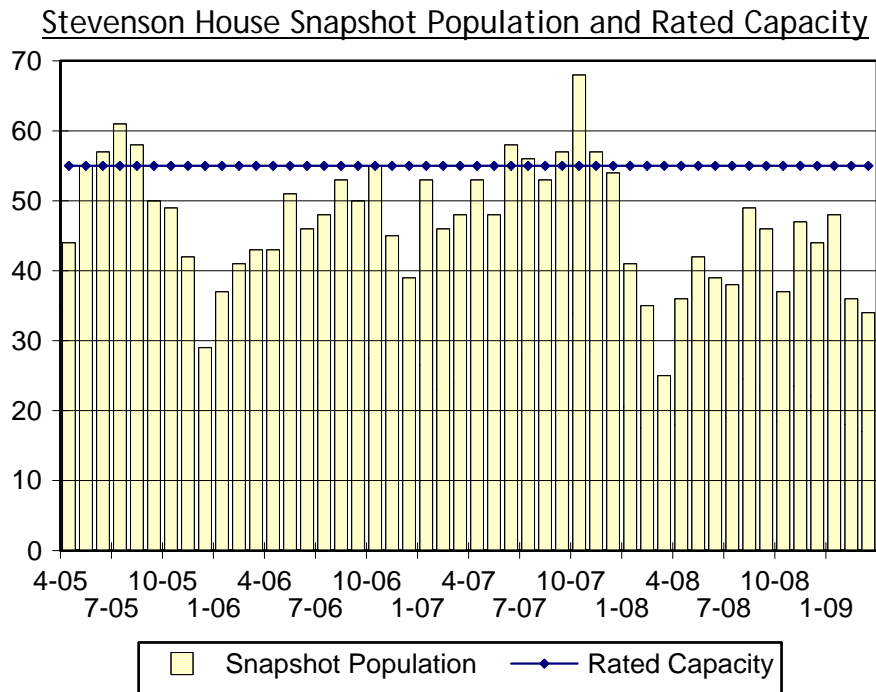
*Youth's status:* There were 25 detained and 9 adjudicated youth on March 31, 2009.

*Releases:* 108 youth were released during the first quarter of 2009 with an average LOS of 36 days, and a maximum of 201 days.



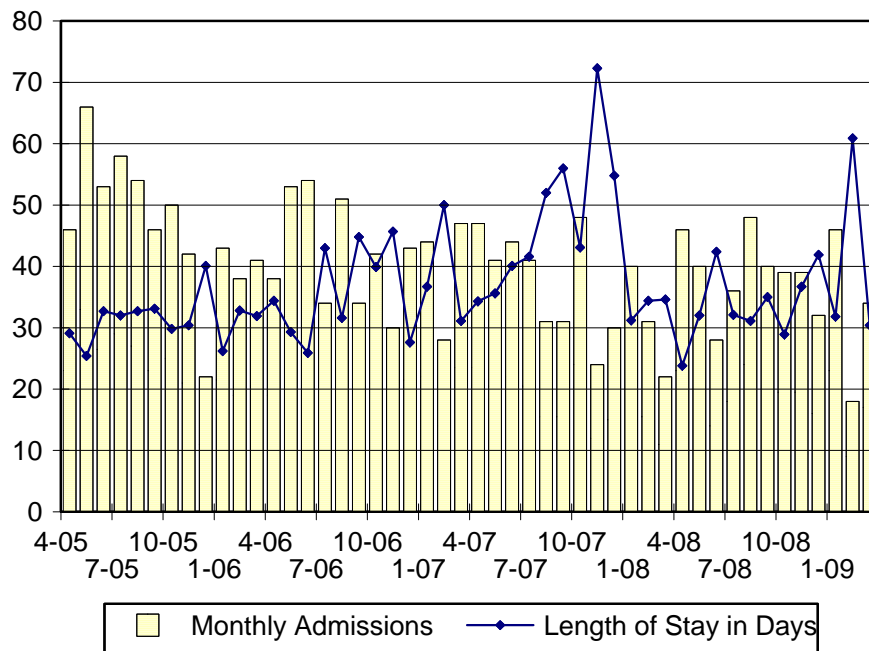
**Budget Development, Planning and Administration  
Statistical Analysis Center**

410 Federal Street • Suite 6 • Dover, DE 19901  
Phone: (302) 739-4626 • Fax: (302) 739-4630 • [www.omb.delaware.gov](http://www.omb.delaware.gov)



Snapshot populations are taken at the end of any given month.

### Stevenson House Admissions And Time At Stevenson House



Length of Stay: Average length of stay in days at the Stevenson House given monthly admissions and populations.

Admissions, First Quarter 2009.

Month	Number	Percent
January	46	47
February	18	18
March	34	35
Total	98	100

Admission Demographics, First Quarter 2009.

Race/ethnicity and age	Gender		Total	
	Female	Male	Number	Percent
African American				
13	0	2	2	2
14	1	6	7	7
15	4	13	17	17
16	3	11	14	14
17	1	16	17	17
Subtotal	9	48	57	58
Hispanic				
17	1	0	1	1
Subtotal	1	0	1	1
White				
12	0	1	1	1
13	1	1	2	2
14	1	4	5	5
15	3	7	10	10
16	6	6	12	12
17	1	8	9	9
18	0	1	1	1
Subtotal	12	28	40	41
Total	22	76	98	100

Admissions Profile for First Quarter 2009 Stevenson House Admittees.

Admissions	Youth			Admissions		
	Number	Percent	Cum. %	Number	Percent	Cum. %
Total	98	100%	100%	356	100%	100%
First admission	35	36%	36%	35	10%	10%
Multiple admissions	63	64%	64%	321	90%	90%
2 <sup>nd</sup>	15	15%	51%	30	8%	18%
3 <sup>rd</sup>	12	12%	63%	36	10%	28%
4 <sup>th</sup>	12	12%	76%	48	13%	42%
5 <sup>th</sup>	4	4%	80%	20	6%	47%
6 <sup>th</sup>	7	7%	87%	42	12%	59%
7 <sup>th</sup>	2	2%	89%	14	4%	63%
8 <sup>th</sup>	4	4%	93%	32	9%	72%
9 <sup>th</sup>	0	.	93%	0	.	72%
10 <sup>th</sup>	1	1%	94%	10	3%	75%
11 <sup>th</sup>	1	1%	95%	11	3%	78%
12 <sup>th</sup>	0	.	95%	0	.	78%
13 <sup>th</sup>	1	1%	96%	13	4%	82%
14 <sup>th</sup>	1	1%	97%	14	4%	86%
15 <sup>th</sup>	0	.	97%	0	.	86%
16 <sup>th</sup>	1	1%	98%	16	4%	90%
17 <sup>th</sup>	1	1%	99%	17	5%	95%
18 <sup>th</sup>	1	1%	100%	18	5%	100%

Note: First admission means that, heretofore, a juvenile had never been admitted to Secure Detention, residential Level III, Level IV, Level V, or Division of Family Services (DFS) and Child Mental Health (CMH) programs that provide residential services. Included in the count of multiple admissions are those admitted to Secure Detention, residential Level III, Level IV, Level V, and DFS and CMH programs that provide residential services which are classified by DSCYF as crisis bed; mental health; residential group care; treatment center; residential Interagency Collaborative Team; residential treatment, mental health; and residential treatment, substance abuse.

**Admission Profile by Dispositional  
Level for First Quarter 2009 Stevenson House Admittees.**

Admissions	Number and percent of youth							
	Sec. Det.		L. V		L. IV		L. III	
	N.	%	N.	%	N.	%	N.	%
Total	98	100	98	100	98	100	98	100
No prior admissions	55	56	88	90	70	71	42	43
Multiple admissions	43	44	10	10	28	29	56	57
2 <sup>nd</sup>	24	24	6	6	5	5	21	21
3 <sup>rd</sup>	10	10	1	1	13	13	15	15
4 <sup>th</sup>	5	5	0	.	3	3	12	12
5 <sup>th</sup>	3	3	1	1	4	4	4	4
6 <sup>th</sup>	1	1	2	2	0	.	4	4
7 <sup>th</sup>	0	.	0	.	3	3	0	.

Note: Included in the count of multiple admissions are those admitted to Secure Detention (Sec. Det.), Level III, Level IV, Level V, and Division of Family Services and Child Mental Health programs that provide residential services which are classified by DSCYF as crisis bed; mental health; residential group care; treatment center; residential Interagency Collaborative Team; residential treatment, mental health; and residential treatment, substance abuse.

Reading this table: This table shows that 44 percent of youth admitted to the Stevenson House Stevenson House during the first quarter of 2009 had prior admissions to secure detention, 10 percent to Level V, 29 percent to Level IV, and 57 percent to Level III. Twenty-nine of the 55 youth without prior detention admissions had prior admissions to Levels III, IV and/or V.

## Leading Charge at Admission, First Quarter 2009.

Detained felonies and misdemeanors, 10 Del.C. § 1007(a)(2)	Total	Gender		Minority	
		F	M	W	M
Assault in the second degree	5	2	3	2	3
Assault in the third degree	4	0	4	0	4
Breach of conditions of release, felony	1	1	0	1	0
Burglary in the second degree	2	1	1	2	0
Burglary in the second degree, attempted	1	1	0	1	0
Carrying a concealed deadly weapon	1	0	1	0	1
Forgery in the second degree	1	0	1	0	1
Possession of a deadly weapon by a person prohibited, firearm	2	0	2	2	0
Possession of a deadly weapon during the commission of a felony	6	1	5	1	5
Possession of a firearm during the commission of a felony	3	0	3	1	2
Possession of burglar's tools	1	0	1	0	1
Possession with intent to deliver non-narcotics	1	0	1	0	1
Rape in the second degree	1	0	1	1	0
Receiving stolen property, felony	1	1	0	0	1
Resisting arrest with force or violence, class G felony	1	0	1	1	0
Robbery in the first degree	1	0	1	0	1
Robbery in the second degree	1	0	1	0	1
Sexual extortion	1	0	1	1	0
Terroristic threatening, felony	1	1	0	1	0
Theft of a firearm	1	0	1	1	0
Trafficking in MDMA from 25 to less than 250 doses or tablets	1	1	0	0	1
Subtotal	37	9	28	15	22
Failure to appear, 10 Del.C. § 1007(a)(3)					
Failure to appear in court	5	1	4	1	4
Subtotal	5	1	4	1	4
Fugitive for another state, 11 Del.C. § 2513					
Fugitive from another state	1	0	1	0	1
Subtotal	1	0	1	0	1
Administrative violations and holds					
Administrative hold	5	0	5	3	2
Internal transfer	4	0	4	2	2
Subtotal	9	0	9	5	4

## Leading Charge at Admission, First Quarter 2009.

Detained admissions for charges not referenced in 10 Del.C. § 1007	Total	Gender		Minority	
		F	M	W	M
Civil contempt, juvenile fail to pay fines	1	0	1	0	1
Conspiracy in the third degree	1	0	1	0	1
Criminal contempt	1	1	0	1	0
Criminal mischief, unclassified misdemeanor	1	0	1	0	1
Disorderly conduct	2	1	1	1	1
Offensive touching	4	0	4	1	3
Receiving stolen property, misdemeanor	1	0	1	0	1
Resisting arrest	1	0	1	0	1
Terroristic threatening, misdemeanor	1	1	0	1	0
Theft, misdemeanor	1	1	0	0	1
Truancy, fail to attend school	1	1	0	1	0
Subtotal	15	5	10	5	10
Violation of probation pursuant to 11 Del.C. § 4334					
Violation of probation	9	5	4	3	6
Subtotal	9	5	4	3	6
Sentenced admissions pursuant to an adjudication					
Conspiracy in the second degree	1	0	1	0	1
Conspiracy in the third degree	1	0	1	0	1
Criminal mischief, unclassified misdemeanor	1	0	1	0	1
Drug court violation	5	1	4	5	0
Internal transfer	1	0	1	0	1
Offensive touching	1	1	0	1	0
Possession of a weapon in a safe school zone	1	0	1	0	1
Possession of drug paraphernalia	1	0	1	1	0
Rape in the fourth degree	1	0	1	0	1
Sexual harassment	1	0	1	0	1
Shoplifting, misdemeanor	2	0	2	0	2
Violation of probation	6	0	6	3	3
Subtotal	23	2	21	11	12
Total	98	22	76	40	58

Crime Category at Admission, First Quarter 2009.

Category	Number	Percent
Violent felony	24	24
Violent misdemeanor	5	5
Nonviolent felony	12	12
Nonviolent misdemeanor	24	24
Unclassified misdemeanor	2	2
Drug Court violation	5	5
Probation violation	15	15
Administrative hold/Aftercare revocation	11	11
<b>Total</b>	<b>98</b>	<b>100</b>

While 15 youth were admitted solely for a violation of probation (VOP), another 4 had a VOP and an arrest for another crime. A total of 19 youth were charged with a VOP.

Length of Stay on March 31, 2009.

LOS in intervals	Youth	Length of Stay		
	Number	Average	Median	Maximum
1 to 3 days	2	1	1	1
4 to 14 days	8	7	7	14
15 to 29 days	6	22	22	29
30 to 59 days	5	43	48	51
60 to 119 days	6	77	76	91
120 to 179 days	6	133	128	153
180 plus days	1	181	181	181
<b>Summary</b>	<b>34</b>	<b>54</b>	<b>34</b>	<b>181</b>

Legal Status by Average LOS on March 31, 2009.

	Detained		Sentenced		Total	
	No.	LOS	No.	LOS	No.	LOS
Family Court	18	42	8	36	26	40
30 days or less	10	10	5	19	15	13
31 days or more	8	82	3	65	11	78
Superior Court	7	98	1	120	8	101
120 days or less	4	65	1	120	5	76
121 days or more	3	142	0	.	3	142
<b>Total</b>	<b>25</b>	<b>58</b>	<b>9</b>	<b>45</b>	<b>34</b>	<b>54</b>



Youth's Involvement on March 31, 2009.

Detained	Number	LOS in days
Aftercare	5	51
Probation	0	.
Serious Juvenile Offender and Comprehensive Aftercare Program	0	.
Division of Child Mental Health	3	9
Division of Family Services	3	69
Family Court detainees	18	42
Superior Court detainees	7	98
Sentenced	Number	LOS in days
Family Court	8	36
Superior Court	1	120

Population Demographics on March 31, 2009.

Race/ethnicity and age	Gender		Total	
	Female	Male	Number	Percent
African American				
13	0	1	1	3
14	1	1	2	6
15	0	3	3	9
16	2	4	6	18
17	0	7	7	21
Subtotal	3	16	19	56
Asian American				
17	0	1	1	3
Subtotal	0	1	1	3
Hispanic				
17	1	0	1	3
Subtotal	1	0	1	3
White				
13	0	1	1	3
14	0	1	1	3
15	1	3	4	12
16	0	2	2	6
17	0	5	5	15
Subtotal	1	12	13	38
Total	5	29	34	100

Releases, First Quarter 2009.

To whom released/program	Number	Percent	<u>LOS in days</u>	
			Mean	Max.
<b>Releases to the community</b>				
Community Services, Abraxas electronic monitoring	2	2	5	5
Community Services, Camelot non-secure detention	8	7	2	4
Community Services, Camelot, shelter	1	1	7	7
Community Services, PCS, Multysystemic Therapy	1	1	100	100
Community Services, Peoples Place II, non-sec. detention	4	4	7	14
Community Services, Peoples Place II, shelter	2	2	33	49
Community Services, Probation	1	1	6	6
Division of Family Services	2	2	5	6
Division of Family Services, Elizabeth Murphey School, Inc.	1	1	141	141
Guardian	1	1	6	6
Parent	20	19	30	124
Relative	4	4	18	45
<b>Releases to the community subtotal</b>	<b>47</b>	<b>44</b>	<b>23</b>	<b>141</b>
<b>Releases to a secure placement</b>				
Community Services, Diversified Treatment Alternatives	2	2	70	132
Community Services, Hennepin County Home School	4	4	4	4
Community Services, Mountain Manor Treatment Center	1	1	24	24
Community Services, University Behavioral Center	3	3	104	201
Department of Correction, General Population	1	1	140	140
Department of Correction, Probation	1	1	145	145
Department of Correction, YCOP	2	2	92	159
Maryland authorities	2	2	22	35
YRS, Ferris School For Boys	15	14	48	93
YRS, Grace Cottage	4	4	10	14
YRS, Mowlds Cottage	7	6	37	66
YRS, New Castle County Detention Center	5	5	48	153
YRS, Snowden Cottage	13	12	42	69
YRS, Stevenson House Detention Center	1	1	2	2
<b>Releases to a secure placement subtotal</b>	<b>61</b>	<b>56</b>	<b>46</b>	<b>201</b>
<b>Total releases</b>	<b>108</b>	<b>100</b>	<b>36</b>	<b>201</b>

Legal Status by Average LOS at Release, First Quarter 2009.

	<u>Detained</u>		<u>Sentenced</u>		<u>Total</u>	
	No.	LOS	No.	LOS	No.	LOS
Family Court	36	5	64	44	100	30
30 days or less	34	4	29	15	63	9
31 days or more	2	37	35	68	37	67
Superior Court	5	109	3	109	8	109
120 days or less	3	84	1	24	4	69
121 days or more	2	147	2	152	4	149
Total	41	18	67	47	108	36

Crime Category at Release, First Quarter 2009.

Category	Number	Percent	<u>LOS in days</u>	
			Mean	Maximum
Violent felony	27	24	70	201
Violent misdemeanor	9	8	23	61
Non-violent felony	10	9	30	99
Non-violent misdemeanor	34	31	28	100
Unclassified misdemeanor	2	2	2	2
Drug Court violation	4	4	11	24
Probation violation	17	16	22	57
Administrative hold/Aftercare revocation	5	5	5	9
Total	108	100	36	201