



**State of Delaware
Executive Department
Office of Management and Budget**

To: John Frazer
From: Jorge Rodríguez-Labarca
Date: May 12, 2009
Subject: Fourth Quarter 2008 Stevenson House Status Report

On December 31, 2008, with a population of 44 the Stevenson House was 20 percent under capacity. The capacity of 55 beds was not exceeded.

Admissions: There were 110 admissions to the Stevenson House during the fourth quarter of 2008.

Admission demographics: Of the 110 admissions, 14 were females and 96 were males. During the fourth quarter 65 African Americans, 41 whites, three Hispanics and one Asian American and were admitted to the Stevenson House.

Leading charges at admission: The most frequent leading charges at admission for the fourth quarter were violation of probation, 15; burglary in the first degree and failure to appear in court, 7. Thirty-six youth, or 33 percent, were admitted to the Stevenson House for violent felonies.

Length of stay: There were 44 youth at the Stevenson House with an average length of stay (LOS) of 47 days and a maximum LOS of 167 days on December 31, 2008.

Of the 44 youth, there were 35 Family Court youth with an average LOS of 38 days, and 9 Superior Court youth with an average LOS of 78 days.

Snapshot demographics: Of the 44 youth on December 31, 3 were female and 41 were male. There were 29 African Americans, 14 whites and one Asian American.

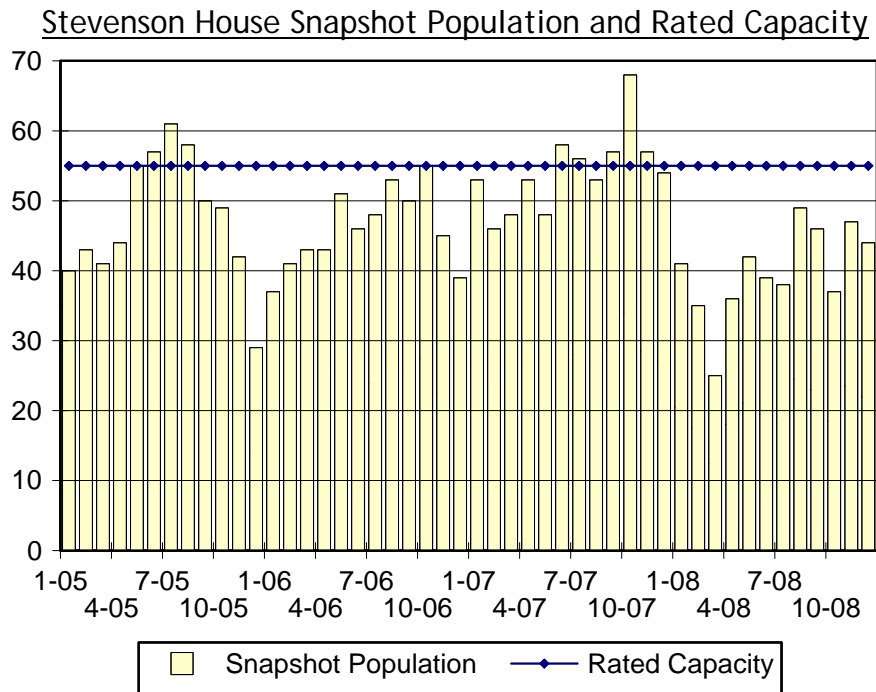
Youth's status: There were 30 detained and 14 adjudicated youth on December 31, 2008.

Releases: 111 youth were released during the fourth quarter of 2008 with an average LOS of 35 days, and a maximum of 275 days.



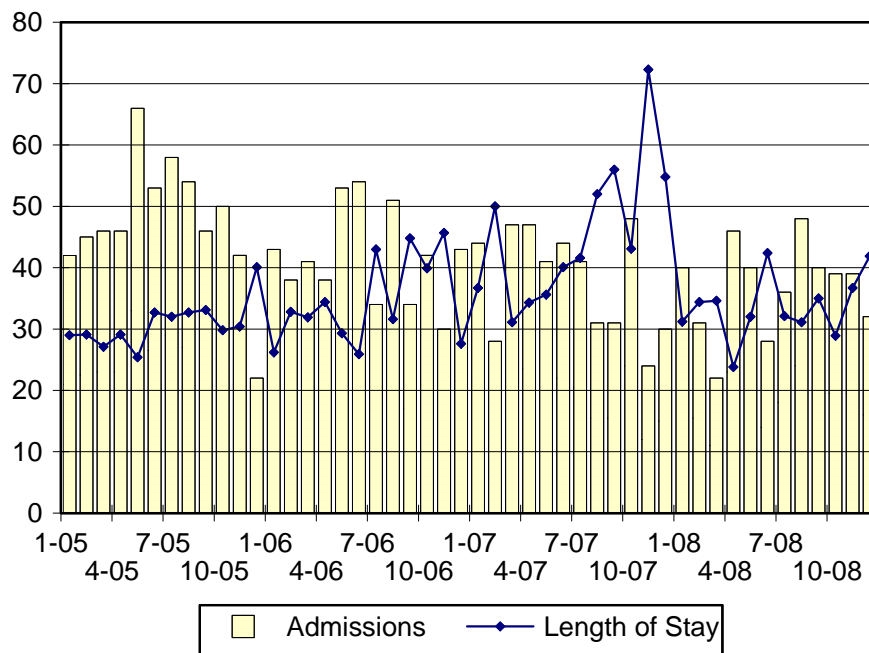
**Budget Development, Planning and Administration
Statistical Analysis Center**

410 Federal Street • Suite 6 • Dover, DE 19901
Phone: (302) 739-4626 • Fax: (302) 739-4630 • www.omb.delaware.gov



Snapshot populations are taken at the end of any given month.

Stevenson House Admissions And Time At Stevenson House



Length of Stay: Average length of stay in days at the Stevenson House given monthly admissions and populations.

Admissions, Fourth Quarter 2008.

Month	Number	Percent
October	39	35
November	39	35
December	32	29
Total	110	100

Admission Demographics, Fourth Quarter 2008.

Race/ethnicity and age	Gender		Total	
	Female	Male	Number	Percent
Asian American				
17	0	1	1	1
Subtotal	0	1	1	1
African American				
11	0	2	2	2
12	0	1	1	1
13	0	4	4	4
14	2	8	10	9
15	1	8	9	8
16	2	18	20	18
17	3	16	19	17
Subtotal	8	57	65	59
Hispanic				
16	0	2	2	2
17	0	1	1	1
Subtotal	0	3	3	3
White				
12	0	1	1	1
13	1	0	1	1
14	0	2	2	2
15	3	4	7	6
16	2	11	13	12
17	0	17	17	15
Subtotal	6	35	41	37
Total	14	96	110	100

Admissions Profile for Fourth Quarter 2008 Stevenson House Admittees.

Admissions	Youth			Admissions		
	Number	Percent	Cum. %	Number	Percent	Cum. %
Total	110	100%	100%	353	100%	100%
First admission	45	41%	41%	45	13%	13%
Multiple admissions	65	59%	59%	308	87%	87%
2 nd	21	19%	60%	42	12%	25%
3 rd	13	12%	72%	39	11%	36%
4 th	7	6%	78%	28	8%	44%
5 th	4	4%	82%	20	6%	49%
6 th	5	5%	86%	30	8%	58%
7 th	2	2%	88%	14	4%	62%
8 th	5	5%	93%	40	11%	73%
9 th	1	1%	94%	9	3%	76%
10 th	0	.	94%	0	.	76%
11 th	2	2%	95%	22	6%	82%
12 th	2	2%	97%	24	7%	89%
13 th	2	2%	99%	26	7%	96%
14 th	1	1%	100%	14	4%	100%

Note: First admission means that, heretofore, a juvenile had never been admitted to Secure Detention, residential Level III, Level IV, Level V, or Division of Family Services (DFS) and Child Mental Health (CMH) programs that provide residential services. Included in the count of multiple admissions are those admitted to Secure Detention, residential Level III, Level IV, Level V, and DFS and CMH programs that provide residential services which are classified by DSCYF as crisis bed; mental health; residential group care; treatment center; residential Interagency Collaborative Team; residential treatment, mental health; and residential treatment, substance abuse.

**Admission Profile by Dispositional
Level for Fourth Quarter 2008 Stevenson House Admittees.**

Admissions	Number and percent of youth							
	Sec. Det.		L. V		L. IV		L. III	
	N.	%	N.	%	N.	%	N.	%
Total	110	100	110	100	110	100	110	100
No prior admissions	61	55	99	90	79	72	45	41
Multiple admissions	49	45	11	10	31	28	65	59
2 nd	27	25	3	3	8	7	21	19
3 rd	12	11	5	5	10	9	16	15
4 th	5	5	2	2	5	5	16	15
5 th	2	2	0	.	4	4	3	3
6 th	3	3	0	.	2	2	4	4
7 th	0	.	1	1	2	2	1	1
8 th	0	.	0	.	0	.	1	1
9 th	0	.	0	.	0	.	2	2
10 th	0	.	0	.	0	.	1	1

Note: Included in the count of multiple admissions are those admitted to Secure Detention (Sec. Det.), Level III, Level IV, Level V, and Division of Family Services and Child Mental Health programs that provide residential services which are classified by DSCYF as crisis bed; mental health; residential group care; treatment center; residential Interagency Collaborative Team; residential treatment, mental health; and residential treatment, substance abuse.

Reading this table: This table shows that 45 percent of youth admitted to the Stevenson House Stevenson House during the fourth quarter of 2008 had prior admissions to secure detention, 10 percent to Level V, 28 percent to Level IV, and 59 percent to Level III. Twenty-seven of the 61 youth without prior detention admissions had prior admissions to Levels III, IV and/or V.

Leading Charge at Admission, Fourth Quarter 2008.

Detained felonies and misdemeanors, 10 Del.C. § 1007(a)(2)	Total	Gender		Minority	
		F	M	W	M
Assault in the second degree	3	0	3	1	2
Assault in the third degree	3	0	3	1	2
Burglary in the second degree	4	0	4	3	1
Burglary in the third degree	4	0	4	1	3
Burglary in the third degree, attempted	1	0	1	1	0
Carrying a concealed deadly weapon	1	0	1	0	1
Continual sexual abuse of child	1	0	1	0	1
Delivery of narcotics to a person under 18 years of age	1	0	1	1	0
Escape in the second degree	2	1	1	0	2
Murder in the first degree, attempted	1	1	0	0	1
Possession of a deadly weapon during the commission of a felony	7	1	6	1	6
Possession of a firearm during the commission of a felony	1	0	1	1	0
Possession with intent to deliver narcotics	1	0	1	0	1
Possession with intent to deliver non-narcotics	1	0	1	1	0
Rape in the first degree	1	0	1	1	0
Rape in the second degree	3	0	3	0	3
Rape in the second degree, attempted	1	0	1	0	1
Receiving stolen property, felony	1	0	1	1	0
Robbery in the first degree	6	1	5	3	3
Robbery in the second degree	2	0	2	1	1
Sexual exploitation of a child	1	0	1	1	0
Shoplifting, felony	1	0	1	0	1
Theft of a motor vehicle	2	0	2	1	1
Subtotal	49	4	45	19	30
Failure to appear, 10 Del.C. § 1007(a)(3)					
Failure to appear in court	7	3	4	2	5
Subtotal	7	4	3	2	5
Repeated failure to comply, 10 Del.C. § 1007(a)(4)					
Escape in the third degree	1	0	1	1	0
Subtotal	1	0	1	1	0
Administrative violations and holds					
Administrative hold	1	0	1	0	1
Internal transfer	6	1	5	1	5
Subtotal	7	1	6	1	6

Leading Charge at Admission, Fourth Quarter 2008.

Detained admissions for charges not referenced in 10 Del.C. § 1007	Total	Gender		Minority	
		F	M	W	M
Breach of conditions of release, misdemeanor	1	0	1	0	1
Civil contempt, juvenile fails to pay fines	1	0	1	0	1
Criminal trespassing in the second degree	1	1	0	1	0
Disorderly conduct	1	0	1	0	1
Menacing	1	0	1	0	1
Offensive touching	2	0	2	0	2
Possession or use of a non-narcotic	2	1	1	1	1
Terroristic threatening, misdemeanor	2	0	2	1	1
Theft, misdemeanor, victim is 62 years or older	1	0	1	0	1
Subtotal	12	2	10	3	9
Violation of probation pursuant to 11 Del.C. § 4334					
Violation of probation	7	1	6	3	4
Subtotal	7	1	6	3	4
Sentenced admissions pursuant to an adjudication					
Burglary in the third degree	3	0	3	1	2
Carrying a concealed dangerous instrument	1	0	1	0	1
Carrying a concealed deadly weapon	1	0	1	0	1
Criminal trespassing in the second degree	1	1	0	1	0
Disorderly conduct	1	0	1	1	0
Drug court violation	2	0	2	1	1
Menacing, aggravated	1	0	1	1	0
Offensive touching	1	1	0	0	1
Possession of drug paraphernalia	1	0	1	0	1
Receiving stolen property, felony	1	0	1	0	1
Resisting arrest	1	0	1	0	1
Robbery in the second degree	1	0	1	1	0
Shoplifting, misdemeanor	2	0	2	1	1
Theft, misdemeanor	1	0	1	1	0
Vehicular assault in the second degree, driving under the influence	1	0	1	1	0
Violation of probation	8	1	7	3	5
Subtotal	27	3	24	12	15
Total	110	14	96	41	69

Crime Category at Admission, Fourth Quarter 2008.

Category	Number	Percent
Violent felony	36	33
Violent misdemeanor	7	6
Nonviolent felony	17	15
Nonviolent misdemeanor	25	23
Unclassified misdemeanor	1	1
Drug Court violation	2	2
Probation violation	15	14
Administrative hold/Aftercare revocation	7	6
Total	110	100

While 15 youth were admitted solely for a violation of probation (VOP), another 5 had a VOP and an arrest for another crime. A total of 20 youth were charged with a VOP.

Length of Stay on December 31, 2008.

LOS in intervals	<u>Youth</u>	<u>Length of Stay</u>		
	Number	Average	Median	Maximum
1 to 3 days	5	2	3	3
4 to 14 days	5	10	11	14
15 to 29 days	7	24	25	29
30 to 59 days	14	40	36	58
60 to 119 days	10	83	80	106
120 to 179 days	3	142	132	167
180 plus days	0	.	.	.
Summary	44	47	36	167

Legal Status by Average LOS on December 31, 2008.

	<u>Detained</u>		<u>Sentenced</u>		<u>Total</u>	
	No.	LOS	No.	LOS	No.	LOS
Family Court	21	32	14	48	35	38
30 days or less	12	14	6	17	18	15
31 days or more	9	56	8	72	17	63
Superior Court	9	78	0	.	9	78
120 days or less	7	64	0	.	7	64
121 days or more	2	130	0	.	2	130
Total	30	46	14	48	44	47

Youth's Involvement on December 31, 2008.

Detained	Number	LOS in days
Aftercare	5	52
Probation	0	.
Serious Juvenile Offender and Comprehensive Aftercare Program	0	.
Division of Child Mental Health	2	7
Division of Family Services	3	26
Family Court detainees	21	32
Superior Court detainees	9	78
<hr/>		
Sentenced		
Family Court	14	48
Superior Court	0	.

Population Demographics on December 31, 2008.

Race/ethnicity and age	Gender		Total	
	Female	Male	Number	Percent
Asian American				
17	0	1	1	2
Subtotal	0	1	1	2
African American				
13	0	1	1	2
14	1	2	3	7
15	1	4	5	11
16	0	10	10	23
17	1	9	10	23
Subtotal	3	26	29	66
White				
12	0	1	1	2
14	0	1	1	2
15	0	3	3	7
16	0	4	4	9
17	0	5	5	11
Subtotal	0	14	14	32
Total	3	41	44	100

Releases, Fourth Quarter 2008.

To whom released/program	Number	Percent	LOS in days	
			Mean	Max.
Releases to the community				
Community Services, Abraxas Electronic Monitoring	3	3	16	37
Community Services, Abraxas IIIA	3	3	12	21
Community Services, Camelot Non-Secure Detention	2	2	4	5
Community Services, Peoples Place II Shelter	2	2	12	23
Community Services, Peoples Place II Non-Secure Detention	6	5	4	12
Community Services, Providence, Non-Secure Detention	3	3	2	3
Community Services, VisionQuest FCIM	1	1	28	28
Division of Family Services	8	7	35	113
Parent	33	30	24	161
Relative	2	2	41	79
Releases to the community subtotal	63	57	21	161
Releases to a secure placement				
Child Mental Health, Brenford R.T.C.	2	2	7	10
Community Services, Clarinda Academy	1	1	24	24
Community Services, Diversified Treatment Alternatives	1	1	275	275
Community Services, Mountain Manor Treatment Center	2	2	11	16
Community Services, Southwest Indiana	2	2	94	117
Community Services, Today, Inc., Short Term Drug Abuse	1	1	16	16
Department of Correction, General Population	1	1	225	225
Department of Correction, YCOP	4	4	186	226
U.S. Immigration and Naturalization Service	1	1	19	19
YRS, Ferris School for Boys	13	12	54	84
YRS, Grace Cottage	7	6	13	30
YRS, Mowlds Cottage	5	5	16	37
YRS, New Castle County Detention Center	2	2	2	2
YRS, Snowden	5	5	26	37
YRS, Stevenson House Detention Center	1	1	30	30
Releases to a secure placement subtotal	48	43	54	275
Total releases	111	100	35	275

Legal Status by Average LOS at Release, Fourth Quarter 2008.

	<u>Detained</u>		<u>Sentenced</u>		<u>Total</u>	
	No.	LOS	No.	LOS	No.	LOS
Family Court	48	14	57	37	105	26
30 days or less	43	7	35	17	78	11
31 days or more	5	75	22	69	27	70
Superior Court	2	183	4	191	6	189
120 days or less	0	.	0	.	0	.
121 days or more	2	183	4	191	6	189
Total	50	21	61	47	111	35

Crime Category at Release, Fourth Quarter 2008.

Category	Number	Percent	<u>LOS in days</u>	
			Mean	Maximum
Violent felony	28	25	70	275
Violent misdemeanor	9	8	22	113
Non-violent felony	20	18	37	117
Non-violent misdemeanor	35	32	21	77
Unclassified misdemeanor	1	1	1	1
Drug Court violation	2	2	5	6
Probation violation	15	14	18	38
Administrative hold/Aftercare revocation	1	1	10	10
Total	111	100	35	275