



**State of Delaware
Executive Department
Office of Management and Budget**

To: John Frazer
From: Jorge Rodríguez-Labarca
Date: January 30, 2009
Subject: Third Quarter 2008 Stevenson House Status Report

On September 30, 2008, with a population of 46 the Stevenson House was 16 percent under capacity. The capacity of 55 beds was not exceeded.

Admissions: There were 124 admissions to the Stevenson House during the third quarter of 2008.

Admission demographics: Of the 124 admissions, 29 were females and 95 were males. During the third quarter 77 African Americans, 46 whites and one Hispanic were admitted to the Stevenson House.

Leading charges at admission: The most frequent leading charges at admission for the third quarter were violation of probation, 13; failure to appear in court, 9; and, and burglary in the second degree, 8. Thirty-nine youth, or 31 percent, were admitted to the Stevenson House for violent felonies.

Length of stay: There were 46 youth at the Stevenson House with an average length of stay (LOS) of 53 days and a maximum LOS of 248 days on September 30, 2008.

Of the 46 youth, there were 37 Family Court youth with an average LOS of 39 days, and 9 Superior Court youth with an average LOS of 112 days.

Snapshot demographics: Of the 46 youth on September 30, 11 were female and 35 were male. There were 36 African Americans, and 10 whites.

Youth's status: There were 30 detained and 16 adjudicated youth on September 30, 2008.

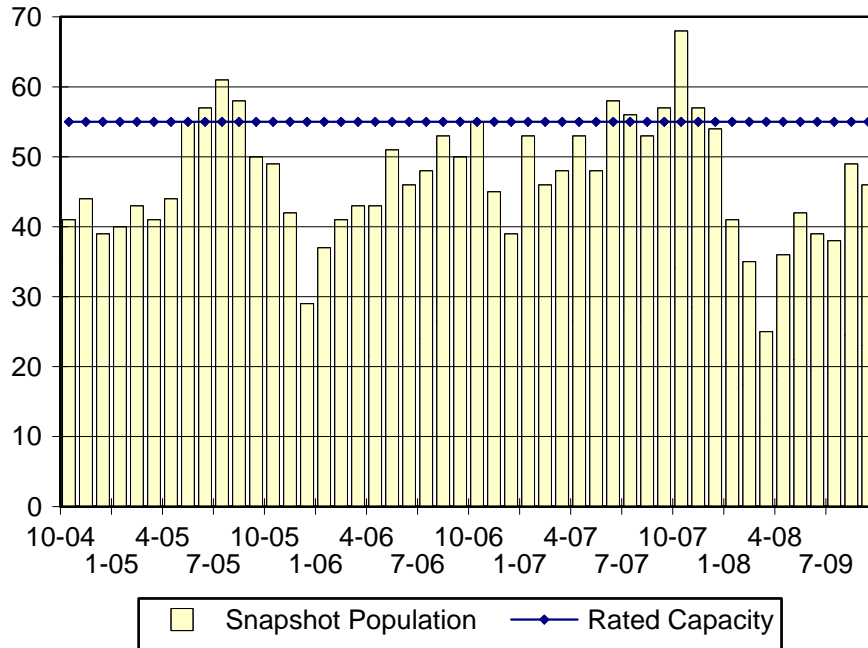
Releases: 116 youth were released during the third quarter of 2008 with an average LOS of 24 days, and a maximum of 139 days.



**Budget Development, Planning and Administration
Statistical Analysis Center**

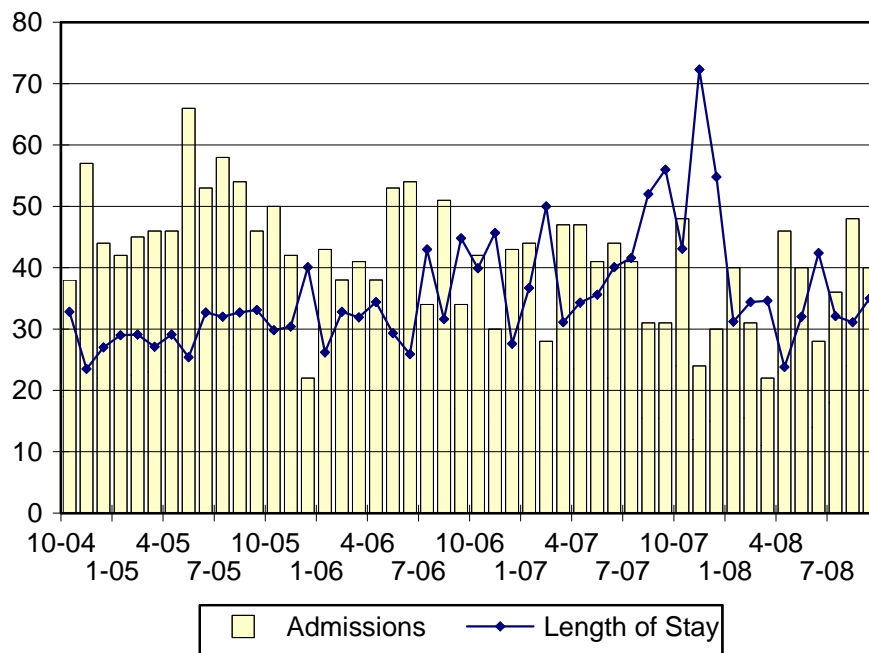
410 Federal Street • Suite 6 • Dover, DE 19901
Phone: (302) 739-4626 • Fax: (302) 739-4630 • www.omb.delaware.gov

Stevenson House Snapshot Population and Rated Capacity



Snapshot populations are taken at the end of any given month.

Stevenson House Admissions And Time At Stevenson House



Length of Stay: Average length of stay in days at the Stevenson House given monthly admissions and populations.

Admissions, Third Quarter 2008.

Month	Number	Percent
July	36	29
August	48	39
September	40	32
Total	124	100

Admission Demographics, Third Quarter 2008.

Race/ethnicity and age	Gender		Total	
	Female	Male	Number	Percent
African American				
11	0	1	1	1
12	0	2	2	2
13	0	7	7	6
14	2	12	14	11
15	3	13	16	13
16	3	15	18	15
17	4	13	17	14
18	0	2	2	2
Subtotal	12	65	77	62
Hispanic				
17	0	1	1	1
Subtotal	0	1	1	1
White				
12	1		1	1
13	2	2	4	3
14	3	3	6	5
15	3	5	8	6
16	5	9	14	11
17	3	10	13	10
Subtotal	17	29	46	37
Total	29	95	124	100

Admissions Profile for Third Quarter 2008 Stevenson House Admittees.

Admissions	<u>Youth</u>			<u>Admissions</u>		
	Number	Percent	Cum. %	Number	Percent	Cum. %
Total	124	100%	100%	462	100%	100%
First admission	50	40%	40%	50	11%	11%
Multiple admissions	74	60%	60%	412	89%	89%
2 nd	17	14%	54%	34	7%	18%
3 rd	9	7%	61%	27	6%	24%
4 th	13	10%	72%	52	11%	35%
5 th	8	6%	78%	40	9%	44%
6 th	3	2%	81%	18	4%	48%
7 th	5	4%	85%	35	8%	55%
8 th	3	2%	87%	24	5%	61%
9 th	2	2%	89%	18	4%	65%
10 th	4	3%	92%	40	9%	73%
11 th	5	4%	96%	55	12%	85%
12 th	1	1%	97%	12	3%	88%
13 th	2	2%	98%	26	6%	93%
14 th	1	1%	99%	14	3%	96%
15 th	0	.	99%	0	.	96%
16 th	0	.	99%	0	.	96%
17 th	1	1%	100%	17	4%	100%

Note: First admission means that, heretofore, a juvenile had never been admitted to Secure Detention, residential Level III, Level IV, Level V, or Division of Family Services (DFS) and Child Mental Health (CMH) programs that provide residential services. Included in the count of multiple admissions are those admitted to Secure Detention, residential Level III, Level IV, Level V, and DFS and CMH programs that provide residential services which are classified by DSCYF as crisis bed; mental health; residential group care; treatment center; residential Interagency Collaborative Team; residential treatment, mental health; and residential treatment, substance abuse.

**Admission Profile by Dispositional
Level for Third Quarter 2008 Stevenson House Admittees.**

Admissions	Number and percent of youth							
	Sec. Det.		L. V		L. IV		L. III	
	N.	%	N.	%	N.	%	N.	%
Total	124	100	124	100	124	100	124	100
No prior admissions	72	58	108	87	82	66	50	40
Multiple admissions	52	42	16	13	42	34	74	60
2 nd	23	19	9	7	6	5	22	18
3 rd	17	14	5	4	14	11	22	18
4 th	6	5	1	1	8	6	18	15
5 th	1	1	0	.	4	3	4	3
6 th	4	3	0	.	4	3	4	3
7 th	0	.	1	1	4	3	2	2
8 th	1	1	0	.	1	1	1	1
9 th	0	.	0	.	0	.	1	1
10 th	0	.	0	.	0	.	0	.
11 th	0	.	0	.	1	1	0	.

Note: Included in the count of multiple admissions are those admitted to Secure Detention (Sec. Det.), Level III, Level IV, Level V, and Division of Family Services and Child Mental Health programs that provide residential services which are classified by DSCYF as crisis bed; mental health; residential group care; treatment center; residential Interagency Collaborative Team; residential treatment, mental health; and residential treatment, substance abuse.

Reading this table: This table shows that 42 percent of youth admitted to the Stevenson House Stevenson House during the third quarter of 2008 had prior admissions to secure detention, 13 percent to Level V, 34 percent to Level IV, and 60 percent to Level III. Thirty-eight of the 58 youth without prior detention admissions had prior admissions to Levels III, IV and/or V.

Leading Charge at Admission, Third Quarter 2008.

Detained felonies and misdemeanors, 10 Del.C. § 1007(a)(2)	Total	Gender		Minority	
		F	M	W	M
Adulteration	1	1	0	0	1
Arson in the first degree	1	1	0	1	0
Arson in the third degree	1	0	1	0	1
Assault in the second degree	2	0	2	0	2
Assault in the third degree	4	2	2	3	1
Burglary in the second degree	7	1	6	2	5
Burglary in the third degree	5	0	5	0	5
Carrying a concealed deadly weapon	1	0	1	1	0
Maintaining a vehicle for keeping controlled substances	1	0	1	0	1
Menacing, aggravated	1	1	0	0	1
Murder in the first degree, attempted	1	0	1	0	1
Possession of a deadly weapon during the commission of a felony	5	2	3	0	5
Possession of a firearm during the commission of a felony	4	0	4	2	2
Possession with intent to deliver narcotics	2	0	2	0	2
Rape in the fourth degree	1	0	1	1	0
Rape in the second degree, attempted	1	0	1	0	1
Resisting arrest with force or violence	1	0	1	1	0
Robbery in the first degree	6	0	6	1	5
Robbery in the second degree	2	1	1	0	2
Robbery in the second degree, attempted	1	0	1	1	0
Theft of a firearm	1	0	1	0	1
Theft of a motor vehicle	1	0	1	0	1
Wearing a disguise during the commission of a felony	1	0	1	1	0
Subtotal	51	9	42	14	37
Failure to appear, 10 Del.C. § 1007(a)(3)					
Capias	1	0	1	1	0
Failure to appear in court	9	2	7	4	5
Subtotal	10	2	8	5	5
Administrative violations and holds					
Administrative hold, Aftercare revocation	1	1	0	1	0
Administrative hold, pending Aftercare revocation	1	0	1	0	1
Internal transfer	4	0	4	0	4
Subtotal	6	1	5	1	5

Leading Charge at Admission, Third Quarter 2008.

Detained admissions for charges not referenced in 10 Del.C. § 1007	Total	Gender		Minority	
		F	M	W	M
Breach of conditions of release, misdemeanor	2	2	0	2	0
Civil contempt, juvenile fails to pay fines	2	0	2	1	1
Criminal contempt	2	0	2	2	0
Criminal impersonation	2	1	1	1	1
Criminal mischief, unclassified misdemeanor	1	0	1	0	1
Criminal trespassing in the first degree	1	0	1	0	1
Escape in the third degree	3	0	3	0	3
Loitering	1	0	1	0	1
Offensive touching	6	5	1	4	2
Possession of drug paraphernalia	1	0	1	0	1
Possession or use of narcotics	1	1	0	1	0
Out of state vehicle, failure to have minimum insurance	1	0	1	0	1
Resisting arrest	2	0	2	0	2
Terroristic threatening, misdemeanor	5	1	4	3	2
Subtotal	30	10	20	14	16
Violation of probation pursuant to 11 Del.C. § 4334					
Violation of probation	9	3	6	2	7
Subtotal	9	3	6	2	7
Sentenced admissions pursuant to an adjudication					
Assault in the second degree	1	1	0	0	1
Burglary in the second degree	1	0	1	1	0
Burglary in the third degree	2	0	2	0	2
Criminal contempt	1	0	1	1	0
Disorderly conduct	1	0	1	0	1
Internal transfer	1	0	1	0	1
Possession of drug paraphernalia	1	0	1	1	0
Possession or use of a non-narcotic	1	0	1	1	0
Possession with intent to deliver non-narcotics	1	1	0	0	1
Rape in the first degree	1	0	1	1	0
Rape in the fourth degree	1	0	1	1	0
Theft, misdemeanor	1	0	1	0	1
Violation of probation	4	2	2	4	0
Subtotal	17	4	13	10	7
Total	124	29	95	46	78

Crime Category at Admission, Third Quarter 2008.

Category	Number	Percent
Violent felony	39	31
Violent misdemeanor	10	8
Nonviolent felony	15	12
Nonviolent misdemeanor	34	27
Traffic misdemeanor	1	1
Unclassified misdemeanor	3	2
Unclassified violations	1	1
Probation violation	13	10
Administrative hold/Aftercare revocation	8	6
Total	124	100

While 13 youth were admitted solely for a violation of probation (VOP), another 9 had a VOP and an arrest for another crime. A total of 22 youth were charged with a VOP.

Length of Stay on September 30, 2008.

LOS in intervals	<u>Youth</u>	<u>Length of Stay</u>		
	Number	Average	Median	Maximum
1 to 3 days	6	2	2	3
4 to 14 days	7	11	11	14
15 to 29 days	6	23	24	29
30 to 59 days	14	39	36	56
60 to 119 days	5	71	71	76
120 to 179 days	6	147	144	167
180 plus days	2	223	223	248
Summary	46	53	34	248

Legal Status by Average LOS on September 30, 2008.

	<u>Detained</u>		<u>Sentenced</u>		<u>Total</u>	
	No.	LOS	No.	LOS	No.	LOS
Family Court	23	37	14	42	37	39
30 days or less	16	10	3	23	19	12
31 days or more	7	101	11	47	18	68
Superior Court	7	101	2	151	9	112
120 days or less	4	53	0	.	4	53
121 days or more	3	166	2	151	5	160
Total	30	52	16	56	46	53

Youth's Involvement on September 30, 2008.

Detained	Number	LOS in days
Aftercare	4	64
Probation	2	112
Serious Juvenile Offender and Comprehensive Aftercare Program	0	.
Division of Child Mental Health	1	160
Division of Family Services	2	29
Family Court detainees	23	37
Superior Court detainees	7	101
Sentenced		
Family Court	14	42
Superior Court	2	151

Population Demographics on September 30, 2008.

Race/ethnicity and age	Gender		Total	
	Female	Male	Number	Percent
African American				
11	0	1	1	2
12	0	2	2	4
13	0	2	2	4
14	1	4	5	11
15	1	5	6	13
16	1	4	5	11
17	3	11	14	30
18	0	1	1	2
Subtotal	6	30	36	78
White				
13	1	0	1	2
14	1	0	1	2
15	0	2	2	4
16	3	1	4	9
17	0	2	2	4
Subtotal	5	5	10	22
Total	11	35	46	100

Releases, Third Quarter 2008.

To whom released/program	Number	Percent	LOS in days	
			Mean	Max.
Releases to the community				
Aftercare	1	1	15	15
Community Services, Abraxas electronic monitoring	3	3	13	25
Community Services, Abraxas IIIA	4	3	15	20
Community Services, Camelot non-secure detention	6	5	2	3
Community Services, Peoples Place II non-secure det.	7	6	6	20
Community Services, Project Stay Free electronic mon.	2	2	5	9
Community Services, Providence non-secure det.	4	3	2	4
Department of Correction, Probation	1	1	69	69
Division of Family Services	4	3	20	55
Guardian	1	1	34	34
Parent	35	30	20	107
Relative	6	5	25	92
Releases to the community subtotal	74	64	17	107
Releases To A Secure Placement				
Child Mental Health, Red Lion R.T.C.	1	1	49	49
Community Services, Abraxas Fire Setter Program	1	1	99	99
Community Services, Mountain Manor Treatment Center	2	2	11	16
Community Services, Southwest Indiana	1	1	36	36
Community Services, Stetson School, Inc.	1	1	139	139
Community Services, Today Inc.	2	2	42	58
Community Services, University Behavioral Center	3	3	74	121
Community Services, VisionQuest Boot Camp	1	1	31	31
Community Services, Youth Services Agency	1	1	15	15
Department of Correction, YCOP	1	1	14	14
Pennsylvania authorities	1	1	16	16
YRS, Ferris School for Boys	8	7	26	40
YRS, Grace Cottage	7	6	38	93
YRS, Mowlds Cottage	2	2	16	28
YRS, New Castle County Detention Center	2	2	22	31
YRS, Snowden Cottage	8	7	29	48
Releases to a secure placement subtotal	42	36	36	139
Total releases	116	100	24	139

Legal Status by Average LOS at Release, Third Quarter 2008.

	<u>Detained</u>		<u>Sentenced</u>		<u>Total</u>	
	No.	LOS	No.	LOS	No.	LOS
Family Court	60	13	51	35	111	23
30 days or less	52	5	29	17	81	9
31 days or more	8	64	22	59	30	60
Superior Court	3	30	2	42	5	35
120 days or less	3	30	2	42	5	35
121 days or more	0	.	0	.	0	.
Total	63	14	53	35	116	24

Crime Category at Release, Third Quarter 2008.

Category	Number	Percent	<u>LOS in days</u>	
			Mean	Maximum
Violent felony	33	28	34	139
Violent misdemeanor	15	13	24	101
Non-violent felony	12	10	10	28
Non-violent misdemeanor	33	28	19	93
Unclassified misdemeanor	5	4	7	13
Traffic misdemeanor	2	22	22	24
Probation violation	13	11	32	99
Administrative hold/Aftercare revocation	3	3	7	15
Total	116	100	24	139