



STATE OF DELAWARE
EXECUTIVE DEPARTMENT
OFFICE OF MANAGEMENT AND BUDGET

To: John Frazer
From: Jorge Rodríguez-Labarca
Date: August 7, 2008
Subject: Second Quarter 2008 Stevenson House Status Report

On June 30, 2008, with a population of 39 the Stevenson House was 29 percent under capacity. The capacity of 55 beds was not exceeded.

Admissions: There were 114 admissions to the Stevenson House during the second quarter of 2008.

Admission demographics: Of the 114 admissions, 30 were females and 84 were males. During the second quarter 72 African Americans and 42 whites were admitted to the Stevenson House.

Leading charges at admission: The most frequent leading charges at admission for the second quarter were violation of probation, 10; burglary in the second degree, 9; and failure to appear in court and possession of a deadly weapon during the commission of a felony, 7. Forty-two youth, or 37 percent, were admitted to the Stevenson House for violent felonies.

Length of stay: There were 39 youth at the Stevenson House with an average length of stay (LOS) of 39 days and a maximum LOS of 156 days on June 30, 2008.

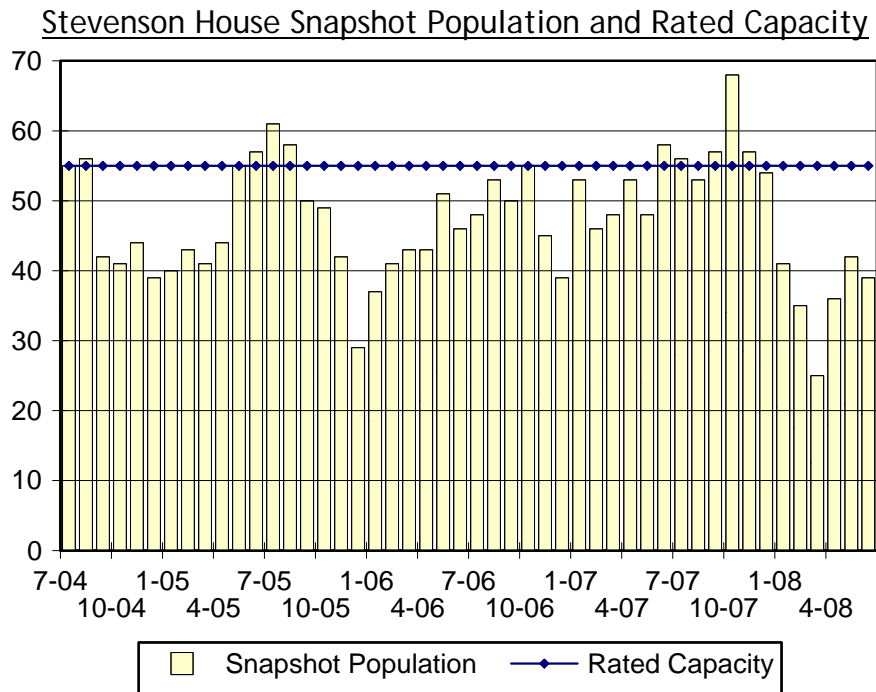
Of the 39 youth, there were 31 Family Court youth with an average LOS of 31 days, and 8 Superior Court youth with an average LOS of 70 days.

Snapshot demographics: Of the 39 youth on June 30, 12 were female and 27 were male. There were 30 African Americans, and 9 whites.

Youth's status: There were 26 detained and 13 adjudicated youth on June 30, 2008.

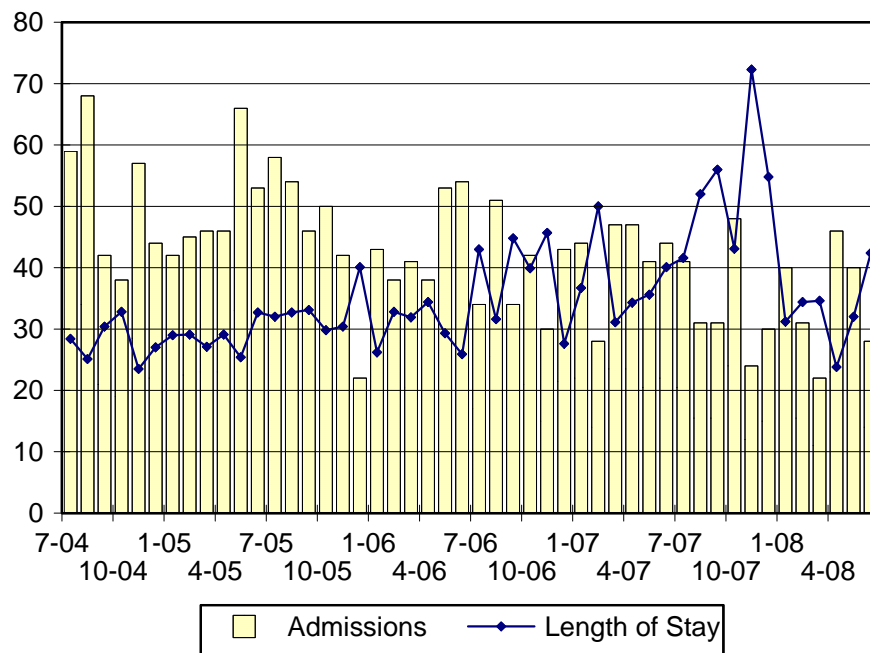
Releases: 102 youth were released during the second quarter of 2008 with an average LOS of 38 days, and a maximum of 317 days.





Snapshot populations are taken at the end of any given month.

Stevenson House Admissions And Time At Stevenson House



Length of Stay: Average length of stay in days at the Stevenson House given monthly admissions and populations.

Admissions, Second Quarter 2008.

Month	Number	Percent
April	46	40
May	40	35
June	28	25
Total	114	100

Admission Demographics, Second Quarter 2008.

Race/ethnicity and age	Gender		Total	
	Female	Male	Number	Percent
African American				
11	0	1	1	1
12	0	3	3	3
13	2	5	7	6
14	5	4	9	8
15	4	11	15	13
16	3	17	20	18
17	5	11	16	14
18	0	1	1	1
Subtotal	19	53	72	63
White				
13	0	2	2	2
14	2	1	3	3
15	2	4	6	5
16	3	10	13	11
17	4	13	17	15
18	0	1	1	1
Subtotal	11	31	42	37
Total	30	84	114	100

Admissions Profile for Second Quarter 2008 Stevenson House Admittees.

Admissions	Youth			Admissions		
	Number	Percent	Cum. %	Number	Percent	Cum. %
Total	114	100%	100%	498	100%	100%
First admission	37	32%	32%	37	7%	7%
Multiple admissions	77	68%	68%	461	93%	93%
2 nd	14	12%	45%	28	6%	13%
3 rd	11	10%	54%	33	7%	20%
4 th	11	10%	64%	44	9%	29%
5 th	9	8%	72%	45	9%	38%
6 th	2	2%	74%	12	2%	40%
7 th	4	4%	77%	28	6%	46%
8 th	8	7%	84%	64	13%	58%
9 th	6	5%	89%	54	11%	69%
10 th	3	3%	92%	30	6%	75%
11 th	1	1%	93%	11	2%	78%
12 th	4	4%	96%	48	10%	87%
13 th	0	.	96%	0	.	87%
14 th	3	3%	99%	42	8%	96%
...	.	.	99%	.	.	96%
22 nd	1	1%	100%	22	4%	100%

Note: First admission means that, heretofore, a juvenile had never been admitted to Secure Detention, residential Level III, Level IV, Level V, or Division of Family Services (DFS) and Child Mental Health (CMH) programs that provide residential services. Included in the count of multiple admissions are those admitted to Secure Detention, residential Level III, Level IV, Level V, and DFS and CMH programs that provide residential services which are classified by DSCYF as crisis bed; mental health; residential group care; treatment center; residential Interagency Collaborative Team; residential treatment, mental health; and residential treatment, substance abuse.

**Admission Profile by Dispositional
Level for Second Quarter 2008 Stevenson House Admittees.**

Admissions	Number and percent of youth							
	Sec. Det.		L. V		L. IV		L. III	
	N.	%	N.	%	N.	%	N.	%
Total	114	100	114	100	114	100	114	100
No prior admissions	68	60	110	96	84	74	56	49
Multiple admissions	46	40	4	4	30	26	58	51
2 nd	29	25	1	1	4	4	18	16
3 rd	8	7	1	1	14	12	20	18
4 th	7	6	2	2	4	4	13	11
5 th	1	1	0	.	7	6	4	4
6 th	1	1	0	.	1	1	2	2
7 th	0	.	0	.	0	.	1	1

Note: Included in the count of multiple admissions are those admitted to Secure Detention (Sec. Det.), Level III, Level IV, Level V, and Division of Family Services and Child Mental Health programs that provide residential services which are classified by DSCYF as crisis bed; mental health; residential group care; treatment center; residential Interagency Collaborative Team; residential treatment, mental health; and residential treatment, substance abuse.

Reading this table: This table shows that 40 percent of youth admitted to the Stevenson House Stevenson House during the second quarter of 2008 had prior admissions to secure detention, 4 percent to Level V, 26 percent to Level IV, and 51 percent to Level III. Twenty-seven of the 68 youth without prior detention admissions had prior admissions to Levels III, IV and/or V.

Leading Charge at Admission, Second Quarter 2008.

Detained felonies and misdemeanors, 10 Del.C. § 1007(a)(2)	Total	Gender		Minority	
		F	M	W	M
Assault in the second degree	1	0	1	0	1
Assault in the third degree	3	1	2	2	1
Breach of conditions of release, felony	1	0	1	1	0
Burglary in the second degree	7	0	7	2	5
Burglary in the third degree	4	0	4	3	1
Failure to register as a sex offender	1	0	1	0	1
Kidnapping in the first degree	2	0	2	0	2
Menacing, aggravated	4	1	3	0	4
Obtaining a controlled substance by robbery, burglary or theft	1	0	1	1	0
Possession of a deadly weapon by a person prohibited	1	0	1	0	1
Possession of a deadly weapon during the commission of a felony	6	5	1	3	3
Possessing a destructive weapon	1	0	1	1	0
Possession of a firearm during the commission of a felony	3	0	3	0	3
Possession of burglar's tools or instruments facilitating theft	1	0	1	0	1
Possession with intent to deliver narcotics	1	0	1	1	0
Rape in the first degree, attempted	2	0	2	0	2
Rape in the second degree	5	0	5	2	3
Robbery in the first degree	4	0	4	2	2
Robbery in the second degree	1	0	1	0	1
Theft of a firearm	1	0	1	1	0
Theft of a motor vehicle	1	0	1	0	1
Subtotal	51	7	44	19	32
Failure to appear, 10 Del.C. § 1007(a)(3)					
Capias	1	0	1	0	1
Failure to appear in court	7	1	6	1	6
Subtotal	8	1	7	1	7
Administrative violations and holds					
Administrative hold	3	0	3	0	3
Administrative hold, pending Aftercare revocation	2	1	1	1	1
Internal transfer	1	0	1	0	1
Subtotal	6	1	5	1	5

Leading Charge at Admission, Second Quarter 2008.

	Total	Gender		Minority	
		F	M	W	M
<hr/>					
Detained admissions for charges not referenced in 10 Del.C. § 1007					
Breach of conditions of release, misdemeanor	1	0	1	1	0
Conspiracy in the third degree	1	1	0	0	1
Criminal contempt	1	0	1	1	0
Disorderly conduct	1	1	0	0	1
Escape in the third degree	1	1	0	0	1
Offensive touching	1	0	1	0	1
Possession or use of narcotics	2	2	0	2	0
Resisting arrest	3	3	0	0	3
Sexual harassment	1	1	0	0	1
Shoplifting, misdemeanor	2	1	1	0	2
Terroristic threatening, misdemeanor	4	0	4	1	3
Theft, misdemeanor, where the victim is 62 years or older	2	2	0	2	0
Theft, misdemeanor	2	2	0	2	0
Subtotal	22	14	8	9	13
<hr/>					
Violation of probation pursuant to 11 Del.C. § 4334					
Violation of probation	5	1	4	2	3
Subtotal	5	1	4	2	3
<hr/>					
Sentenced admissions pursuant to an adjudication					
Burglary in the second degree	2	0	2	1	1
Burglary in the third degree	1	0	1	1	0
Carrying a concealed dangerous instrument	1	0	1	0	1
Disorderly conduct	3	2	1	1	2
Obtaining a controlled substance by robbery, theft or burglary	1	0	1	1	0
Drug Court violation	1	0	1	1	0
Menacing, aggravated	1	0	1	0	1
Offensive touching	1	1	0	0	1
Possession of a deadly weapon during the commission of a felony	1	0	1	1	0
Possession of burglar's tools	1	0	1	0	1
Possession or use of narcotics	1	1	0	1	0
Rape in the fourth degree	1	0	1	0	1
Theft, misdemeanor	2	0	2	1	1
Violation of probation	5	2	3	2	3
Subtotal	22	6	16	10	12
<hr/>					
Total	114	30	84	42	72

Crime Category at Admission, Second Quarter 2008.

Category	Number	Percent
Violent felony	42	37
Violent misdemeanor	11	10
Nonviolent felony	14	12
Nonviolent misdemeanor	29	25
Unclassified misdemeanor	1	1
Probation violation	10	9
Drug Court violation	1	1
Administrative hold/Aftercare revocation	6	5
Total	114	100

While 10 youth were admitted solely for a violation of probation (VOP), another 9 had a VOP and an arrest for another crime. A total of 19 youth were charged with a VOP.

Length of Stay on June 30, 2008.

LOS in intervals	Youth	Length of Stay		
	Number	Average	Median	Maximum
1 to 3 days	0	.	.	.
4 to 14 days	10	7	6	13
15 to 29 days	7	21	22	26
30 to 59 days	15	45	43	56
60 to 119 days	6	78	72	105
120 to 179 days	1	156	156	156
180 plus days	0	.	.	.
Summary	39	39	40	156

Legal Status by Average LOS on June 30, 2008.

	Detained		Sentenced		Total	
	No.	LOS	No.	LOS	No.	LOS
Family Court	18	31	13	32	31	31
30 days or less	9	11	7	13	16	12
31 days or more	9	50	6	54	15	51
Superior Court	8	70	0	.	8	70
120 days or less	7	58	0	.	7	58
121 days or more	1	156	0	.	1	156
Total	26	43	13	32	39	39

Youth's Involvement on June 30, 2008.

Detained	Number	LOS in days
Aftercare	1	12
Probation	0	.
Serious Juvenile Offender and Comprehensive Aftercare Program	0	.
Division of Child Mental Health	1	12
Family Court detainees	18	31
Superior Court detainees	8	70
Sentenced	Number	LOS in days
Family Court	13	32
Superior Court	0	.

Population Demographics on June 30, 2008.

Race/ethnicity and age	Gender		Total	
	Female	Male	Number	Percent
African American				
12	0	1	1	3
13	1	1	2	5
14	2	1	3	8
15	2	6	8	21
16	2	7	9	23
17	2	5	7	18
Subtotal	9	21	30	77
White				
14	1	0	1	3
15	0	2	2	5
16	1	2	3	8
17	1	2	3	8
Subtotal	3	6	9	23
Total	12	27	39	100

Releases, Second Quarter 2008.

To whom released/program	Number	Percent	LOS in days	
			Mean	Max.
<u>Releases to the community</u>				
Community Services, Abraxas electronic monitoring	5	5	7	23
Community Services, Abraxas Level III intensive	4	4	35	63
Community Services, Camelot non-secure detention	4	4	1	1
Community Services, Peoples Place II non-secure det.	4	4	45	170
Community Services, Project Stay Free electronic mon.	1	1	211	211
Community Services, Providence non-secure detention	2	2	2	2
Divison of Family Services	3	3	20	55
Guardian	1	1	19	19
Parent	29	28	22	169
Wilmington Department of Police	1	1	22	22
<u>Releases to the community subtotal</u>	<u>54</u>	<u>53</u>	<u>24</u>	<u>211</u>
<u>Releases To A Secure Placement</u>				
Community Services, Clarinda Academy	1	1	63	63
Community Services, Diversified Treatment Alternatives	2	2	212	217
Community Services, Grace Cottage	7	7	21	37
Community Services, Mountain Manor Treatment Center	1	1	14	14
Community Services, Southwest Indiana	2	2	33	50
Community Services, University Behavioral Center	2	2	53	61
Department of Correction	1	1	54	54
Department of Correction, YCOP	2	2	190	317
Division of Child Mental Health, Rockford Center	1	1	1	1
U.S. Inmigration and Customs Enforcement	1	1	258	258
YRS, Ferris School For Boys	15	15	30	109
YRS, New Castle County Detention Center	2	2	7	9
YRS, Snowden Cottage	11	11	54	239
<u>Releases to a secure placement subtotal</u>	<u>48</u>	<u>47</u>	<u>53</u>	<u>317</u>
<u>Total releases</u>	<u>102</u>	<u>100</u>	<u>38</u>	<u>317</u>

Legal Status by Average LOS at Release, Second Quarter 2008.

	<u>Detained</u>		<u>Sentenced</u>		<u>Total</u>	
	No.	LOS	No.	LOS	No.	LOS
Family Court	38	17	55	43	93	32
30 days or less	36	6	29	17	65	11
31 days or more	2	214	26	71	28	81
Superior Court	5	111	4	80	9	97
120 days or less	3	10	3	50	6	30
121 days or more	2	264	1	169	3	232
Total	43	28	59	45	102	38

Crime Category at Release, Second Quarter 2008.

Category	Number	Percent	<u>LOS in days</u>	
			Mean	Maximum
Violent felony	43	42	63	317
Violent misdemeanor	11	11	19	59
Non-violent felony	13	13	24	64
Non-violent misdemeanor	24	24	18	50
Drug Court violation	1	1	6	6
Probation violation	8	8	22	63
Administrative hold/Aftercare revocation	2	2	23	43
Total	102	100	38	317