



STATE OF DELAWARE  
EXECUTIVE DEPARTMENT  
OFFICE OF MANAGEMENT AND BUDGET

To: John Frazer  
From: Jorge Rodríguez-Labarca  
Date: May 30, 2008  
Subject: First Quarter 2008 Stevenson House Status Report

---

On March 31, 2008, with a population of 25 the Stevenson House was 55 percent under capacity. The capacity of 55 beds was not exceeded.

*Admissions:* There were 93 admissions to the Stevenson House during the fourth quarter of 2008.

*Admission demographics:* Of the 93 admissions, 20 were females and 73 were males. During the first quarter 46 African Americans, one Hispanic and 46 whites were admitted to the Stevenson House.

*Leading charges at admission:* The most frequent leading charges at admission for the first quarter were violation of probation, 9; failure to appear in court and possession of a deadly weapon during the commission of a felony, 7. Thirty-five youth, or 38 percent, were admitted to the Stevenson House for violent felonies.

*Length of stay:* There were 25 youth at the Stevenson House with an average length of stay (LOS) of 74 days and a maximum LOS of 251 days on March 31, 2008.

Of the 25 youth, there were 16 Family Court youth with an average LOS of 63 days, and 9 Superior Court youth with an average LOS of 93 days.

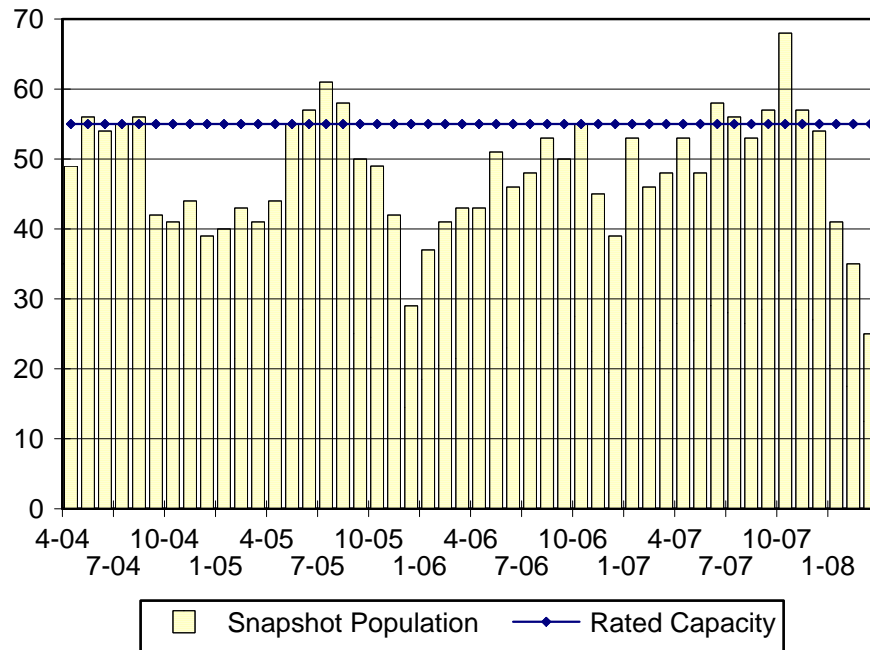
*Snapshot demographics:* Of the 25 youth on March 31, 5 were female and 20 were male. There were 13 African Americans, and 12 whites.

*Youth's status:* There were 21 detained and 4 adjudicated youth on March 31, 2008.

*Releases:* 122 youth were released during the first quarter of 2008 with an average LOS of 53 days, and a maximum of 496 days.

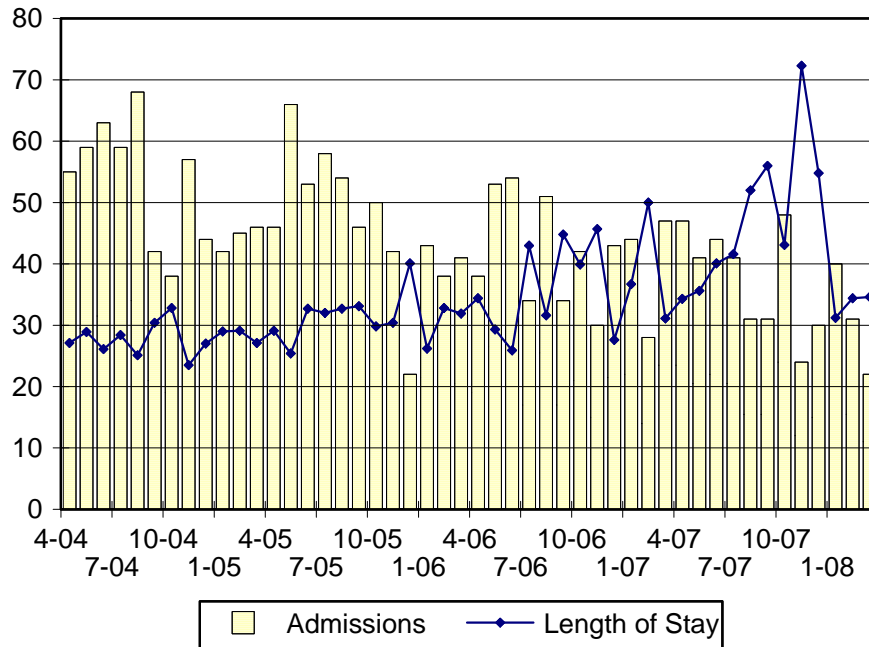


### Stevenson House Snapshot Population and Rated Capacity



Snapshot populations are taken at the end of any given month.

### Stevenson House Admissions And Time At Stevenson House



Length of Stay: Average length of stay in days at the Stevenson House given monthly admissions and populations.

Admissions, First Quarter 2008.

Month	Number	Percent
January	40	43
February	31	33
March	22	24
Total	93	100

Admission Demographics, First Quarter 2008.

Race/ethnicity and age	Gender		Total	
	Female	Male	Number	Percent
African American				
12	1	2	3	3
13	1	3	4	4
14	0	1	1	1
15	0	8	8	9
16	0	10	10	11
17	6	13	19	20
18	0	1	1	1
Subtotal	8	38	46	49
Hispanic				
15	0	1	1	1
Subtotal	0	1	1	1
White				
13	0	2	2	2
14	0	1	1	1
15	2	5	7	8
16	5	8	13	14
17	5	18	23	25
Subtotal	12	34	46	49
Total	20	73	93	100

### Admissions Profile for First Quarter 2008 Stevenson House Admittees.

Admissions	Youth			Admissions		
	Number	Percent	Cum. %	Number	Percent	Cum. %
Total	93	100%	100%	249	100%	100%
First admission	38	41%	41%	38	15%	15%
Multiple admissions	55	59%	59%	211	85%	85%
2 <sup>nd</sup>	19	20%	61%	38	15%	31%
3 <sup>rd</sup>	12	13%	74%	36	14%	45%
4 <sup>th</sup>	9	10%	84%	36	14%	59%
5 <sup>th</sup>	7	8%	91%	35	14%	73%
6 <sup>th</sup>	1	1%	92%	6	2%	76%
7 <sup>th</sup>	3	3%	96%	21	8%	84%
8 <sup>th</sup>	1	1%	97%	8	3%	88%
9 <sup>th</sup>	1	1%	98%	9	4%	91%
10 <sup>th</sup>	1	1%	99%	10	4%	95%
11 <sup>th</sup>	0	.	99%	0	.	95%
12 <sup>th</sup>	1	1%	100%	12	5%	100%

Note: First admission means that, heretofore, a juvenile had never been admitted to Secure Detention, residential Level III, Level IV, Level V, or Division of Family Services (DFS) and Child Mental Health (CMH) programs that provide residential services. Included in the count of multiple admissions are those admitted to Secure Detention, residential Level III, Level IV, Level V, and DFS and CMH programs that provide residential services which are classified by DSCYF as crisis bed; mental health; residential group care; treatment center; residential Interagency Collaborative Team; residential treatment, mental health; and residential treatment, substance abuse.

**Admission Profile by Dispositional  
Level for First Quarter 2008 Stevenson House Admittees.**

Admissions	Number and percent of youth							
	Sec. Det.		L. V		L. IV		L. III	
	N.	%	N.	%	N.	%	N.	%
Total	93	100	93	100	93	100	93	100
No prior admissions	48	52	85	91	74	80	40	43
Multiple admissions	45	48	8	9	19	20	53	57
2 <sup>nd</sup>	28	30	4	4	7	8	20	22
3 <sup>rd</sup>	8	9	4	4	5	5	16	17
4 <sup>th</sup>	6	6	0	.	3	3	8	9
5 <sup>th</sup>	1	1	0	.	3	3	4	4
6 <sup>th</sup>	2	2	0	.	0	.	2	2
7 <sup>th</sup>	0	.	0	.	1	1	2	2
8 <sup>th</sup>	0	.	0	.	0	.	1	1

Note: Included in the count of multiple admissions are those admitted to Secure Detention (Sec. Det.), Level III, Level IV, Level V, and Division of Family Services and Child Mental Health programs that provide residential services which are classified by DSCYF as crisis bed; mental health; residential group care; treatment center; residential Interagency Collaborative Team; residential treatment, mental health; and residential treatment, substance abuse.

Reading this table: This table shows that 48 percent of youth admitted to the Stevenson House during the first quarter of 2008 had prior admissions to secure detention, 9 percent to Level V, 20 percent to Level IV, and 57 percent to Level III. Twenty-one of the 48 youth without prior detention admissions had prior admissions to Levels III, IV and/or V.

## Leading Charge at Admission, First Quarter 2008.

Detained felonies and misdemeanors, 10 Del.C. § 1007(a)(2)	Total	Gender		Minority	
		F	M	W	M
Assault in a detention facility, causing injury	1	0	1	0	1
Assault in the second degree	1	0	1	1	0
Assault in the third degree	3	2	1	3	0
Burglary in the second degree	2	0	2	0	2
Burglary in the third degree	5	0	5	3	2
Menacing, aggravated	1	1	0	0	1
Murder in the first degree	1	0	1	0	1
Possession of a deadly weapon during the commission of a felony	7	1	6	4	3
Possession of a firearm during the commission of a felony	2	0	2	1	1
Possession of a weapon in a safe school zone	1	0	1	0	1
Possession with intent to deliver narcotics	4	1	3	0	4
Rape in the first degree, attempted	2	0	2	0	2
Rape in the second degree	3	0	3	1	2
Rape in the second degree, attempted	1	0	1	0	1
Robbery in the first degree	1	0	1	0	1
Robbery in the first degree, attempted	1	0	1	0	1
Robbery in the second degree	1	0	1	0	1
Theft of a motor vehicle	3	2	1	2	1
Trafficking in cocaine from 10 to less than 50 grams	1	0	1	0	1
Subtotal	41	7	34	15	26
Failure to appear, 10 Del.C. § 1007(a)(3)					
Failure to appear in court	7	4	3	5	2
Subtotal	7	4	3	5	2
Repeated failure to comply					
Criminal mischief, unclassified misdemeanor	1	1	0	0	1
Escape in the third degree	1	0	1	1	0
Subtotal	2	1	1	1	1

Leading Charge at Admission, First Quarter 2008.

Detained admissions for charges not referenced in 10 Del.C. § 1007	Total	Gender		Minority	
		F	M	W	M
Breach of conditions of release, misdemeanor	1	0	1	1	0
Criminal contempt	1	0	1	0	1
Criminal impersonation	1	1	0	1	0
Criminal mischief, unclassified misdemeanor	1	0	1	1	0
Escape in the third degree	1	1	0	0	1
Offensive touching	3	0	3	2	1
Reckless burning or exploding	1	0	1	1	0
Resisting arrest	1	1	0	1	0
Shoplifting, misdemeanor	1	0	1	0	1
Terroristic threatening, misdemeanor	3	1	2	2	1
Truancy, failure to attend school	1	0	1	0	1
Unlawful imprisonment in the second degree	1	0	1	1	0
<b>Subtotal</b>	<b>16</b>	<b>4</b>	<b>12</b>	<b>10</b>	<b>6</b>
<b>Administrative violations and holds</b>					
Administrative hold	2	0	2	1	1
Internal transfer	1	1	0	1	0
<b>Subtotal</b>	<b>3</b>	<b>1</b>	<b>2</b>	<b>2</b>	<b>1</b>
<b>Violation of probation pursuant to 11 Del.C. § 4334</b>					
Violation of probation	4	1	3	2	2
<b>Subtotal</b>	<b>4</b>	<b>1</b>	<b>3</b>	<b>2</b>	<b>2</b>

## Leading Charge at Admission, First Quarter 2008.

Sentenced admissions pursuant to an adjudication	Total	Gender		Minority	
		F	M	W	M
Assault in the third degree	1	1	0	0	1
Bombs, incendiary devices, Molotov cocktails and explosives	1	0	1	1	0
Burglary in the second degree	2	0	2	1	1
Carrying a concealed dangerous instrument	1	0	1	0	1
Offensive touching	2	0	2	1	1
Offensive touching, attempted	1	0	1	0	1
Possession of drug paraphernalia	1	0	1	1	0
Possession of shoplifters tools or instruments	1	0	1	0	1
Possession or use of a non-narcotic	1	0	1	1	0
Possession with intent to deliver narcotics	1	1	0	1	0
Resisting arrest	1	0	1	0	1
Robbery in the second degree	1	0	1	0	1
Trafficking in cocaine from 10 to less than 50 grams	1	0	1	0	1
Violation of probation	5	0	5	5	0
Subtotal	20	2	18	11	9
Total	93	20	73	46	47

## Crime Category at Admission, First Quarter 2008.

Category	Number	Percent
Violent felony	35	38
Violent misdemeanor	8	9
Nonviolent felony	10	11
Nonviolent misdemeanor	27	29
Unclassified misdemeanor	1	1
Probation violation	9	10
Administrative hold/Aftercare revocation	3	3
Total	93	100

While 9 youth were admitted solely for a violation of probation (VOP), another 12 had a VOP and an arrest for another crime. A total of 21 youth were charged with a VOP.



Length of Stay on March 31, 2008.

LOS in intervals	<u>Youth</u>	<u>Length of Stay</u>		
	Number	Average	Median	Maximum
1 to 3 days	3	1	1	2
4 to 14 days	4	12	12	14
15 to 29 days	2	21	21	22
30 to 59 days	6	42	44	53
60 to 119 days	3	73	65	90
120 to 179 days	3	137	132	155
180 plus days	4	216	207	251
Summary	25	74	47	251

Legal Status by Average LOS on March 31, 2008.

	<u>Detained</u>		<u>Sentenced</u>		<u>Total</u>	
	No.	LOS	No.	LOS	No.	LOS
Family Court	12	58	4	77	16	63
30 days or less	6	10	1	1	7	8
31 days or more	6	106	3	102	9	105
Superior Court	9	93	0	.	9	93
120 days or less	5	36	0	.	5	36
121 days or more	4	165	0	.	4	165
Total	21	73	4	77	25	74

Youth's Involvement on March 31, 2008.

<u>Detained</u>	<u>Number</u>	<u>LOS in days</u>
Aftercare	5	53
Probation	6	86
Serious Juvenile Offender and Comprehensive Aftercare Program	0	.
Division of Child Mental Health	1	53
Family Court detainees	12	58
Superior Court detainees	9	93
<u>Sentenced</u>		
Division of Child Mental Health	1	33
Family Court	4	77
Superior Court	0	.

Population Demographics on March 31, 2008.

Race/ethnicity and age	Gender		Total	
	Female	Male	Number	Percent
African American				
14	0	2	2	8
15	0	4	4	16
16	0	2	2	8
17	1	4	5	20
Subtotal	1	12	13	52
White				
15	2	3	5	20
16	1	2	3	12
17	1	3	4	16
Subtotal	4	8	12	48
Total	5	20	25	100

Releases, First Quarter 2008.

To whom released/program	Number	Percent	LOS in days	
			Mean	Max.
<u>Releases to the community</u>				
Community Services, Abraxas electronic monitoring	1	1	1	1
Community Services, Abraxas intensive services	1	1	79	79
Community Services, Camelot non-secure detention	4	3	8	21
Community Services, Peoples Place II, non-secure det.	4	3	4	5
Community Services, Providence non-secure detention	1	1	2	2
Division of Family Services, Children's Choice shelter	1	1	8	8
Divison of Family Services	1	1	11	11
Parent	35	29	20	132
Relative	6	5	56	212
<u>Releases To The Community Subtotal</u>	<u>54</u>	<u>44</u>	<u>22</u>	<u>212</u>
<u>Releases To A Secure Placement</u>				
Community Services, Chamberlain Academy	6	5	45	72
Community Services, Coastal Harbor Treatment Center	1	1	115	115
Community Services, Glen Mills Schools	1	1	27	27
Community Services, Hennepin County	1	1	159	159
Community Services, Southwest Indiana	3	2	47	62
Community Services, Springfield Academy	1	1	42	42
Community Services, Stetson School Inc.	2	2	299	496
Community Services, Summit Academy	2	2	74	78
Community Services, Today, Inc.	1	1	41	41
Community Services, VisionQuest Madalyn	1	1	49	49
Community Services, Youth Services Agency	6	5	42	91
Community Services, VisionQuest Boot Camp	4	3	42	92
Department of Correction	5	4	171	282
Department of Correction, YCOP	4	3	157	310
Division of Child Mental Health, Mountain Manor T.C.	3	2	16	27
YRS, Ferris School For Boys	14	11	66	361
YRS, Grace Cottage	5	4	129	409
YRS, Mowlds Cottage	2	2	3	4
YRS, New Castle County Detention Center	3	2	11	22
YRS, Snowden Cottage	3	2	36	84
<u>Releases to a secure placement subtotal</u>	<u>68</u>	<u>56</u>	<u>77</u>	<u>496</u>
<u>Total releases</u>	<u>122</u>	<u>100</u>	<u>53</u>	<u>496</u>

Legal Status by Average LOS at Release, First Quarter 2008.

	<u>Detained</u>		<u>Sentenced</u>		<u>Total</u>	
	No.	LOS	No.	LOS	No.	LOS
Family Court	41	9	68	65	109	44
30 days or less	38	6	33	15	71	10
31 days or more	3	46	35	113	38	108
Superior Court	7	73	6	190	13	127
120 days or less	5	34	2	111	7	56
121 days or more	2	171	4	230	6	210
Total	48	18	74	75	122	53

Crime Category at Release, First Quarter 2008.

Category	Number	Percent	<u>LOS in days</u>	
			Mean	Maximum
Violent felony	59	48	81	496
Violent misdemeanor	7	6	53	192
Non-violent felony	13	11	31	115
Non-violent misdemeanor	25	20	18	91
Unclassified misdemeanor	1	1	2	2
Probation violation	17	14	24	72
Total	122	100	53	496