



STATE OF DELAWARE
EXECUTIVE DEPARTMENT
OFFICE OF MANAGEMENT AND BUDGET

To: John Frazer
From: Jorge Rodríguez-Labarca
Date: March 10, 2008
Subject: Fourth Quarter 2007 Stevenson House Status Report

On December 31, 2007, the Stevenson House was at 2 percent under capacity with a population of 54 and a rated capacity of 55 beds.

Admissions: There were 102 admissions to the Stevenson House during the fourth quarter of 2007.

Admission demographics: Of the 102 admissions, 27 were females and 75 were males. During the fourth quarter 53 African Americans, 48 whites and one Pacific Islander were admitted to the Stevenson House.

Leading charges at admission: The most frequent leading charges at admission for the fourth quarter were violation of probation, 15; possession of a deadly weapon during the commission of a felony, 9; and burglary in the second degree, 7. 43 youth, or 42 percent, were admitted to the Stevenson House for violent felonies.

Length of stay: There were 54 youth at the Stevenson House with an average length of stay (LOS) of 85 days and a maximum LOS of 442 days on December 31, 2007.

Of the 54 youth, there were 37 Family Court youth with an average LOS of 66 days and 17 Superior Court youth with an average LOS of 126 days.

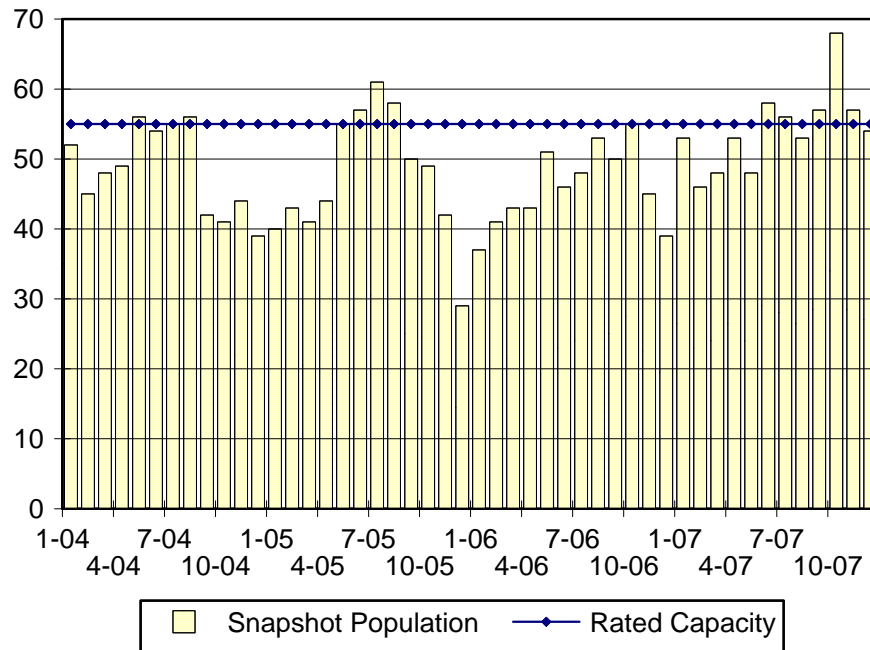
Snapshot demographics: Of the 54 youth, 14 were female and 40 were male, while there were 33 African Americans, 20 whites, and one Pacific Islander.

Youth's status: There were 48 detained and 6 adjudicated youth on December 31, 2007

Releases: 105 youth were released during the fourth quarter of 2007 with an average LOS of 52 days and a maximum of 497 days.

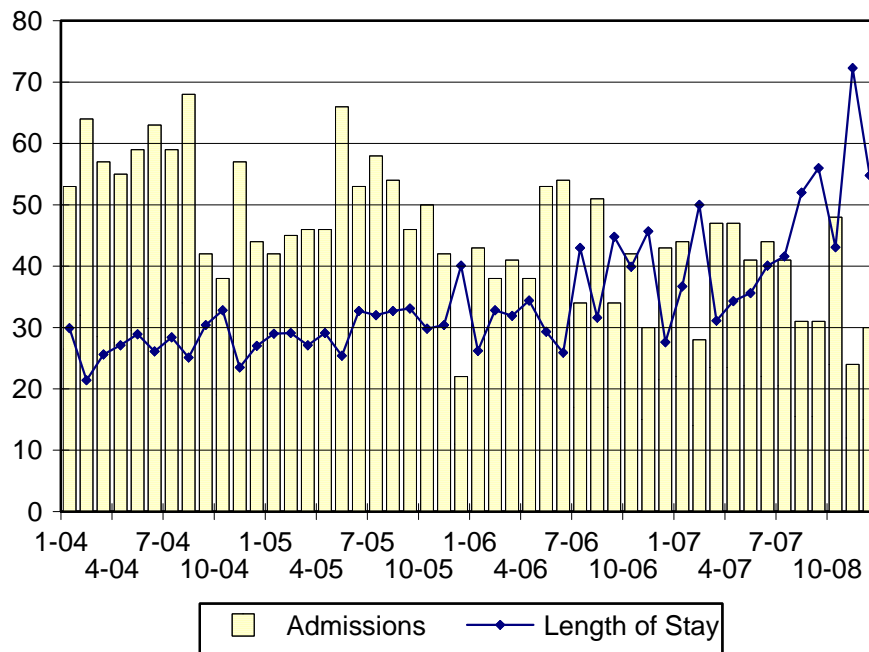


Stevenson House Snapshot Population and Rated Capacity



Snapshot populations are taken at the end of any given month.

Stevenson House Admissions and Time at Stevenson House



Length of Stay: Average length of stay in days at the Stevenson House given monthly admissions and populations.

Admissions, Fourth Quarter 2007.

Month	Number	Percent
October	48	47
November	24	24
December	30	29
Total	102	100

Admission Demographics, Fourth Quarter 2007.

Race/ethnicity and age	Gender		Total	
	Female	Male	Number	Percent
African American				
13	0	2	2	2
14	1	1	2	2
15	2	5	7	7
16	1	12	13	13
17	3	10	13	13
18	4	12	16	16
Subtotal	11	42	53	52
Pacific Islander				
15	0	1	1	1
Subtotal	0	1	1	1
White				
14	3	0	3	3
15	1	6	7	7
16	6	12	18	18
17	6	13	19	19
18	0	1	1	1
Subtotal	16	32	48	47
Total	27	75	102	100

Admissions Profile for
Fourth Quarter 2007 Stevenson House Admittees.

Admissions	Youth			Admissions		
	Number	Percent	Cum. %	Number	Percent	Cum. %
Total	102	100%	100%	279	100%	100%
First admission	50	49%	49%	50	18%	18%
Multiple admissions	52	51%	51%	229	82%	82%
2 nd	15	15%	64%	30	11%	29%
3 rd	9	9%	73%	27	10%	38%
4 th	11	11%	83%	44	16%	54%
5 th	6	6%	89%	30	11%	65%
6 th	4	4%	93%	24	9%	73%
7 th	1	1%	94%	7	3%	76%
8 th	0	.	94%	0	.	76%
9 th	1	1%	95%	9	3%	79%
10 th	1	1%	96%	10	4%	83%
11 th	1	1%	97%	11	4%	87%
12 th	2	2%	99%	24	9%	95%
13 th	1	1%	100%	13	5%	100%

Note: First admission means that, heretofore, a juvenile had never been admitted to Secure Detention, Level III Residential, Level IV, Level V, nor Division of Family Services (DFS) and Child Mental Health (CMH) programs that provide residential services. Included in the count of multiple admissions are those admitted to Secure Detention, Level III Residential, Level IV, Level V, and DFS and CMH programs that provide residential services which are classified by DSCYF as crisis bed; mental health; residential group care; treatment center; residential Interagency Collaborative Team; residential treatment, mental health; and residential treatment, substance abuse.

**Admission Profile by Dispositional
Level for Fourth Quarter 2007 Stevenson House Admittees.**

Admissions	Number and percent of youth							
	Sec. Det.		L. V		L. IV		L. IIIR	
	N.	%	N.	%	N.	%	N.	%
Total	102	100	102	100	102	100	102	100
No prior admissions	68	67	81	79	79	77	48	47
Multiple admissions	34	33	21	21	23	23	54	53
2 nd	17	17	12	12	13	13	22	22
3 rd	11	11	8	8	6	6	15	15
4 th	3	3	1	1	2	2	12	12
5 th	2	2	0	.	0	.	1	1
6 th	1	1	0	.	0	.	3	3
7 th	0	.	0	.	0	.	1	1
8 th	0	.	0	.	2	2	0	.

Note: Included in the count of multiple admissions are those admitted to Secure Detention (Sec. Det.), Level III Residential (L. IIIR), Level IV, Level V, and Division of Family Services and Child Mental Health programs that provide residential services which are classified by DSCYF as crisis bed; mental health; residential group care; treatment center; residential Interagency Collaborative Team; residential treatment, mental health; and residential treatment, substance abuse.

This table shows that 33 percent of youth admitted to the Stevenson House during the fourth quarter of 2007 had prior admissions to secure detention, 21 percent to Level V, 23 percent to Level IV, and 53 percent to Level IIIR. Thirty-one of the 68 youth without prior detention admissions had prior admissions to Levels IIIR, IV and/or V.

Leading Charge at Admission, Fourth Quarter 2007.

Detained felonies and misdemeanors, 10 Del.C. § 1007(a)(2)	Total	Gender		Minority	
		F	M	W	M
Assault in the second degree	1	0	1	1	0
Assault in the third degree	3	1	2	3	0
Burglary in the second degree	7	0	7	3	4
Burglary in the third degree	3	0	3	0	3
Failure to register as a sex offender	1	0	1	0	1
Menacing, aggravated	1	0	1	1	0
Murder in the first degree, attempted	1	0	1	0	1
Possession of a deadly weapon during the commission of a felony	9	3	6	4	5
Possession with intent to deliver narcotics	3	1	2	0	3
Possession with intent to deliver non-narcotics	4	0	4	3	1
Rape in the first degree	1	0	1	0	1
Rape in the second degree	3	0	3	1	2
Rape in the fourth degree	1	0	1	1	0
Receiving stolen property, felony	1	0	1	1	0
Robbery in the first degree	3	2	1	3	0
Robbery in the second degree	1	1	0	1	0
Theft of a motor vehicle	3	2	1	2	1
Theft, felony	2	0	2	1	1
Subtotal	48	10	38	25	23
Failure to appear, 10 Del.C. § 1007(a)(3)					
Failure to appear in court	5	0	5	0	5
Subtotal	5	0	5	0	5
Administrative violations and holds					
Administrative hold	2	1	1	0	2
Subtotal	2	1	1	0	2

Leading Charge at Admission, Fourth Quarter 2007.

	Total	Gender		Minority	
		F	M	W	M
<u>Detained admissions for charges not referenced in 10 Del.C. § 1007</u>					
Conspiracy in the third degree	1	0	1	1	0
Criminal impersonation	1	0	1	0	1
Disorderly conduct	1	0	1	0	1
Endangering the welfare of a child, misdemeanor	1	1	0	1	0
Escape in the third degree	1	1	0	1	0
Reckless endangering in the second degree	1	0	1	1	0
Resisting arrest	1	0	1	0	1
Shoplifting, misdemeanor	1	1	0	0	1
Terroristic threatening, misdemeanor	2	1	1	2	0
Theft, misdemeanor	1	1	0	1	0
Subtotal	11	5	6	7	4
<u>Sentenced admissions pursuant to an adjudication</u>					
Assault in the second degree	1	0	1	0	1
Assault in the third degree	1	0	1	0	1
Burglary in the third degree	2	0	2	1	1
Criminal contempt	1	0	1	0	1
Distribution of a controlled subs. within 1,000 feet of a school	1	0	1	0	1
Drug Court violation	1	0	1	1	0
Kidnapping in the first degree	1	1	0	1	0
Offensive touching	1	0	1	0	1
Own or use an animal for the purpose of fighting	1	0	1	0	1
Possession of a firearm during the commission of a felony	1	0	1	0	1
Possession or use of a non-narcotic	2	1	1	2	0
Possession with intent to deliver narcotics	1	0	1	0	1
Possession with intent to deliver non-narcotics	2	0	2	1	1
Receiving a stolen firearm	1	0	1	1	0
Reckless endangering in the second degree	1	0	1	1	0
Resisting arrest	1	1	0	0	1
Terroristic threatening, misdemeanor	1	0	1	0	1
Violation of probation	10	5	5	5	5
Subtotal	30	8	22	13	17
<u>Violation of probation pursuant to 11 Del.C. § 4334</u>					
Violation of probation	5	2	3	3	2
Subtotal	5	2	3	3	2
Total	102	27	75	48	54

Crime Category at Admission, Fourth Quarter 2007.

<u>Category</u>	<u>Number</u>	<u>Percent</u>
Violent felony	43	42
Violent misdemeanor	9	9
Non-violent felony	13	13
Non-violent misdemeanor	18	18
Drug Court violation	1	1
Probation violation	15	15
Administrative hold/Aftercare revocation	3	3
Total	102	100

While 15 youth were admitted solely for a violation of probation (VOP), another 8 had a VOP and an arrest for another crime. A total of 23 youth were charged with VOP.

Length of Stay on December 31, 2007.

<u>LOS in intervals</u>	<u>Youth</u>			
	<u>Number</u>	<u>Length of Stay</u>		
		<u>Average</u>	<u>Median</u>	<u>Maximum</u>
1 to 3 days	0	.	.	.
4 to 14 days	7	8	6	14
15 to 29 days	8	20	20	24
30 to 59 days	12	38	36	55
60 to 119 days	16	85	75	119
120 to 179 days	5	145	150	160
180 plus days	6	306	306	442
Summary	54	85	59	442

Legal Status by Average LOS at Snapshot on December 31, 2007.

	<u>Detained</u>		<u>Sentenced</u>		<u>Total</u>	
	<u>No.</u>	<u>LOS</u>	<u>No.</u>	<u>LOS</u>	<u>No.</u>	<u>LOS</u>
Family Court	31	61	6	89	37	66
30 days or less	12	13	2	14	14	14
31 days or more	19	91	4	127	23	97
Superior Court	17	126	0	.	17	126
120 days or less	11	73	0	.	11	73
121 days or more	6	223	0	.	6	223
Total	48	84	6	89	54	85

Youth's Involvement on December 31, 2007.

Detained	Number	LOS in days
Aftercare	1	38
Child Mental Health	2	166
Division of Family Services	1	182
Serious Juvenile Offender and Comprehensive Aftercare Program	3	123
Family Court detainees	31	61
Superior Court detainees	17	126
Sentenced		
Family Court	6	89
Superior Court	0	.

Population Demographics on December 31, 2007.

Race/ethnicity and age	Gender		Total	
	Female	Male	Number	Percent
African American				
13	2	1	3	6
14	1	2	3	6
15	1	7	8	15
16	2	8	10	19
17	1	8	9	17
Subtotal	7	26	33	61
Pacific Islander				
15	0	1	1	2
Subtotal	0	1	1	2
White				
14	1	0	1	2
15	0	4	4	7
16	4	6	10	19
17	2	3	5	9
Subtotal	7	13	20	37
Total	14	40	54	100

Fourth Quarter 2007 Releases.

To whom released/program	Number	Percent	<u>LOS in days</u>	
			Mean	Max.
Releases to the community				
Community Services, Abraxas Electronic Monitoring	3	3	82	149
Community Services, Abraxas Level III	2	2	75	79
Community Services, Camelot non-secure detention	4	4	1	1
Community Services, P.C.S. Home Sex Offender	1	1	497	497
Community Services, Peoples Place II non-secure det.	4	4	5	12
Community Services, Providence non-secure detention	1	1	77	77
Division of Family Services	2	2	3	3
Guardian	2	2	31	58
Parent	21	20	24	132
Subtotal	40	38	20	219
Releases to a secure placement				
Community Services, Abraxas Firesetter Program	1	1	102	102
Community Services, Chamberlain Academy	1	1	36	36
Community Services, Clarinda Academy	1	1	45	45
Community Services, Cove P.R.E.P	1	1	125	125
Community Services, Glen Mills Schools	3	3	42	70
Community Services, Hennepin County Home School	2	2	244	297
Community Services, Mountain Manor	1	1	15	15
Community Services, Palmetto Point Program	1	1	106	106
Community Services, Southwest Indiana	4	4	117	171
Community Services, Springfield Academy	3	3	52	85
Community Services, Stetson School Inc.	1	1	54	54
Community Services, Therapeutic Center At Fox Chase	1	1	10	10
Community Services, Youth Services Agency	4	4	21	37
Community Services, VisionQuest Lady Of The Lakes	3	3	41	50
Department of Correction	3	3	129	189
Department of Correction, YCOP	3	3	281	354
Maryland authorities	1	1	2	2
YRS, Ferris School For Boys	22	21	27	136
YRS, Grace Cottage	5	5	8	16
YRS, Snowden Cottage	4	4	17	31
Subtotal	65	62	60	354
Total releases	105	100	52	497

Legal Status by Average LOS at Release, Fourth Quarter 2007.

	<u>Detained</u>		<u>Sentenced</u>		<u>Total</u>	
	No.	LOS	No.	LOS	No.	LOS
Family Court	32	21	64	43	96	36
30 days or less	26	5	36	12	62	9
31 days or more	6	88	28	83	34	84
Superior Court	4	226	5	224	9	224
120 days or less	1	112	1	87	2	100
121 days or more	3	263	4	258	7	260
Total	36	43	69	56	105	52

Crime Category at Release, Fourth Quarter 2007.

Category	Number	Percent	<u>LOS in days</u>	
			Mean	Maximum
Violent felony	48	46	77	354
Violent misdemeanor	9	9	5	21
Non-violent felony	13	12	17	35
Non-violent misdemeanor	16	15	35	106
Drug Court violation	1	1	3	87
Probation violation	15	14	28	497
Administrative hold/Aftercare revocation	3	3	167	3
Total	105	100	52	497