



STATE OF DELAWARE
EXECUTIVE DEPARTMENT
OFFICE OF MANAGEMENT AND BUDGET

To: John Frazer
From: Jorge Rodríguez-Labarca
Date: December 13, 2007
Subject: Third Quarter 2007 Stevenson House Status Report

On September 30, 2007, the Stevenson House was at 4 percent over capacity with a population of 57 and a rated capacity of 55 beds.

Admissions: There were 103 admissions to the Stevenson House during the third quarter of 2007.

Admission demographics: Of the 103 admissions, 16 were females and 87 were males. During the third quarter 63 African Americans and 40 whites were admitted to the Stevenson House.

Leading charges at admission: The most frequent leading charges at admission for the third quarter were internal transfer and violation of probation, 11; and, robbery in the first degree, 9. 45 youth, or 44 percent, were admitted to the Stevenson House for violent felonies.

Length of stay: On September 30, there were 57 youth at the Stevenson House with an average length of stay (LOS) of 82 days and a maximum LOS of 425 days.

Of the 57 youth, there were 34 Family Court youth with an average LOS of 60 days and 23 Superior Court youth with an average LOS of 114 days.

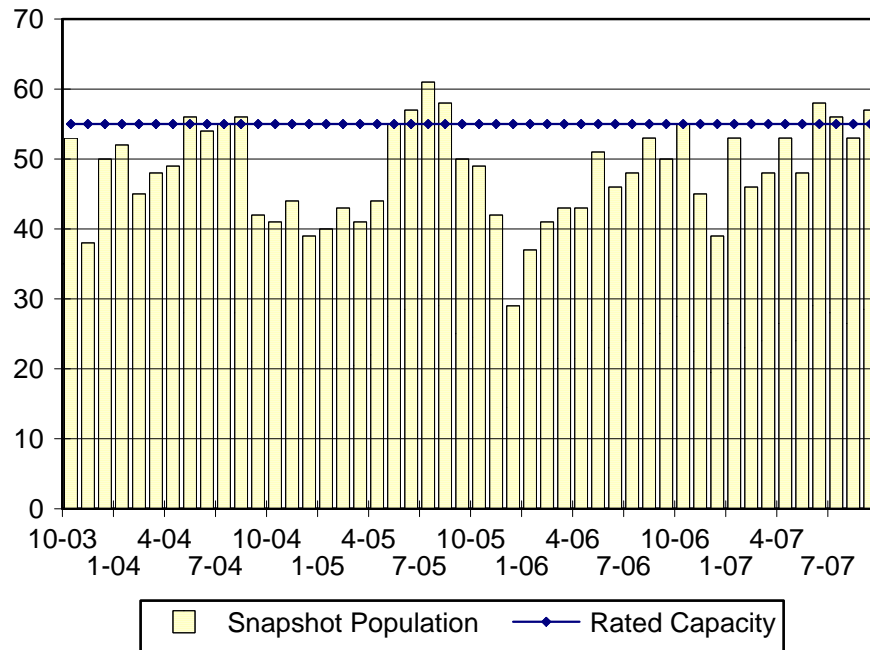
Snapshot demographics: Of the 57 youth, five were female and 52 were male, while there were 38 African Americans and 19 whites.

Youth's status: On September 30, there were 49 detained and 8 adjudicated youth.

Releases: 104 youth were released during the third quarter of 2007 with an average LOS of 42 days, and a maximum of 303 days.

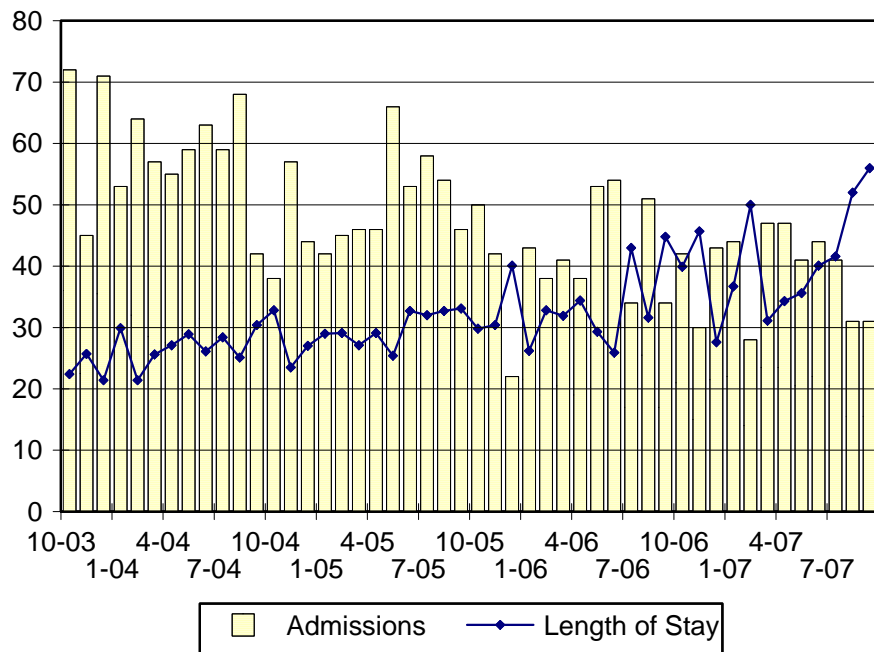


Stevenson House Snapshot Population and Rated Capacity



Snapshot populations are taken at the end of any given month.

Stevenson House Admissions and Time at Stevenson House



Length of Stay: Average length of stay in days at the Stevenson House given monthly admissions and populations.

Admissions, Third Quarter 2007.

Month	Number	Percent
July	41	40
August	31	30
September	31	30
Total	103	100

Admission Demographics, Third Quarter 2007.

Race/ethnicity and age	Gender		Total	
	Female	Male	Number	Percent
African American				
10	0	1	1	1
12	2	4	6	6
13	0	3	3	3
14	3	3	6	6
15	4	8	12	12
16	1	18	19	18
17	1	12	13	13
18	0	3	3	3
Subtotal	11	52	63	61
White				
13	1	0	1	1
14	1	3	4	4
15	0	7	7	7
16	1	11	12	12
17	2	13	15	15
18	0	1	1	1
Subtotal	5	35	40	39
Total	16	87	103	100

**Admissions Profile for
Third Quarter 2007 Stevenson House Admittees.**

Admissions	Youth			Admissions		
	Number	Percent	Cum. %	Number	Percent	Cum. %
Total	103	100%	100%	438	100%	100%
First admission	42	41%	41%	42	10%	10%
Multiple admissions	61	59%	59%	396	90%	90%
2 nd	15	15%	55%	30	7%	16%
3 rd	12	12%	67%	36	8%	25%
4 th	4	4%	71%	16	4%	28%
5 th	4	4%	75%	20	5%	33%
6 th	4	4%	79%	24	5%	38%
7 th	5	5%	83%	35	8%	46%
8 th	5	5%	88%	40	9%	55%
9 th	1	1%	89%	9	2%	58%
10 th	3	3%	92%	30	7%	64%
11 th	1	1%	93%	11	3%	67%
12 th	0	.	93%	0	.	67%
13 th	1	1%	94%	13	3%	70%
14 th	1	1%	95%	14	3%	73%
15 th	2	2%	97%	30	7%	80%
...	.	.	97%	.	.	80%
20 th	1	1%	98%	20	5%	84%
...	.	.	98%	.	.	84%
31 st	1	1%	99%	31	7%	92%
...	.	.	99%	.	.	92%
37 th	1	1%	100%	37	8%	100%

Note: First admission means that, heretofore, a juvenile had never been admitted to Secure Detention, Level III Residential, Level IV, Level V, nor Division of Family Services (DFS) and Child Mental Health (CMH) programs that provide residential services. Included in the count of multiple admissions are those admitted to Secure Detention, Level III Residential, Level IV, Level V, and DFS and CMH programs that provide residential services which are classified by DSCYF as crisis bed; mental health; residential group care; treatment center; residential Interagency Collaborative Team; residential treatment, mental health; and residential treatment, substance abuse.

**Admission Profile by Dispositional
Level for Third Quarter 2007 Stevenson House Admittees.**

Admissions	Number and percent of youth							
	Sec. Det.		L. V		L. IV		L. IIIR	
	N.	%	N.	%	N.	%	N.	%
Total	103	100	103	100	103	100	103	100
No prior admissions	53	51	71	69	69	67	48	47
Multiple admissions	50	48	32	31	34	33	55	53
2 nd	26	25	14	14	18	17	21	20
3 rd	11	11	12	12	4	4	20	19
4 th	5	5	4	4	6	6	9	9
5 th	1	1	1	1	2	2	3	3
6 th	1	1	1	1	3	3	0	.
7 th	2	2	0	.	1	1	1	1
8 th	1	1	0	.	0	.	0	.
9 th	1	1	0	.	0	.	1	1
10 th	1	1	0	.	0	.	0	.
11 th	0	.	0	.	0	.	0	.
12 th	0	.	0	.	0	.	0	.
13 th	0	.	0	.	0	.	0	.
14 th	0	.	0	.	0	.	0	.
15 th	1	1	0	.	0	.	0	.

Note: Included in the count of multiple admissions are those admitted to Secure Detention (Sec. Det.), Level III Residential (L. IIIR), Level IV, Level V, and Division of Family Services and Child Mental Health programs that provide residential services which are classified by DSCYF as crisis bed; mental health; residential group care; treatment center; residential Interagency Collaborative Team; residential treatment, mental health; and residential treatment, substance abuse.

This table shows that 48 percent of youth admitted to the Stevenson House during the third quarter of 2007 had prior admissions to secure detention, 31 percent to Level V, 33 percent to Level IV, and 53 percent to Level IIIR. Fifteen of the 53 youth without prior detention admissions had prior admissions to Levels IIIR, IV and/or V.

Leading Charge at Admission, Third Quarter 2007.

Detained felonies and misdemeanors, 10 Del.C. § 1007(a)(2)	Total	Gender		Minority	
		F	M	W	M
Assault in the first degree	1	0	1	0	1
Assault in the third degree	1	1	0	0	1
Burglary in the second degree	3	1	2	2	1
Burglary in the third degree	4	0	4	2	2
Conspiracy in the second degree	1	0	1	1	0
Kidnapping in the second degree	1	0	1	1	0
Menacing, aggravated	1	1	0	1	0
Possession of a deadly weapon during the commission of a felony	1	0	1	0	1
Possession of a firearm during the commission of a felony	3	0	3	2	1
Possession of a weapon in a safe school zone	1	1	0	0	1
Possession with intent to deliver narcotics	4	0	4	0	4
Possession with intent to deliver non-narcotics	3	1	2	2	1
Rape in the first degree	7	0	7	1	6
Rape in the second degree	1	0	1	0	1
Rape in the fourth degree	1	0	1	1	0
Receiving stolen property, felony	1	0	1	1	0
Resisting arrest with force or violence, class G felony	1	1	0	0	1
Robbery in the first degree	8	0	8	2	6
Robbery in the first degree, attempted	3	0	3	0	3
Robbery in the second degree	1	0	1	1	0
Unlawful sexual contact in the second degree	1	0	1	1	0
Subtotal	48	6	42	18	30
Failure to appear, 10 Del.C. § 1007(a)(3)					
Failure to appear in court	5	1	4	2	3
Subtotal	5	1	4	2	3
Administrative violations and holds					
Administrative hold, Aftercare revocation	2	1	1	1	1
Administrative hold, internal transfer	8	1	7	0	8
Subtotal	10	2	8	1	9

Leading Charge at Admission, Third Quarter 2007.

	Total	Gender		Minority	
		F	M	W	M
Detained admissions for charges not referenced in 10 Del.C. § 1007					
Civil contempt, juvenile fails to pay fines	1	1	0	0	1
Conspiracy in the third degree	1	0	1	1	0
Criminal mischief, unclassified misdemeanor	1	0	1	0	1
Criminal trespassing in the first degree	1	0	1	0	1
Endangering the welfare of a child, misdemeanor	1	0	1	1	0
Escape in the third degree	1	0	1	1	0
Offensive touching	4	1	3	3	1
Terroristic threatening, misdemeanor	1	0	1	1	0
Theft, misdemeanor	1	0	1	1	0
Unauthorized use of a motor vehicle	1	0	1	1	0
Subtotal	13	2	11	9	4
Sentenced admissions pursuant to an adjudication					
Administrative hold, internal transfer	3	1	2	1	2
Drug court violation	2	0	2	2	0
Possession of a firearm during the commission of a felony	2	1	1	1	1
Possession with intent to deliver narcotics	1	0	1	0	1
Rape in the fourth degree	1	1	0	1	0
Robbery in the first degree	1	0	1	1	0
Theft of a firearm	1	0	1	0	1
Theft of a motor vehicle	3	0	3	0	3
Unauthorized use of a motor vehicle	1	0	1	1	0
Unlawful sexual contact in the second degree	1	0	1	0	1
Violation of probation	6	2	4	2	4
Subtotal	22	5	17	9	13
Violation of probation pursuant to 11 Del.C. § 4334					
Violation of probation	5	0	5	1	5
Subtotal	5	0	5	1	5
Total	103	16	87	40	63

Crime Category at Admission, Third Quarter 2007.

Category	Number	Percent
Violent felony	45	44
Violent misdemeanor	2	2
Non-violent felony	12	12
Non-violent misdemeanor	17	17
Drug Court violation	2	2
Probation violation	11	11
Administrative hold/Aftercare revocation	13	13
Unclassified misdemeanor	1	1
Total	103	100

While 11 youth were admitted solely for a violation of probation (VOP), another 10 had a VOP and an arrest for another crime. A total of 21 youth were charged with VOP.

Length of Stay on September 30, 2007.

LOS in intervals	<u>Youth</u>	<u>Length of Stay</u>		
	Number	Average	Median	Maximum
1 to 3 days	0	.	.	.
4 to 14 days	10	9	9	14
15 to 29 days	11	21	20	27
30 to 59 days	9	46	42	58
60 to 119 days	16	77	69	117
120 to 179 days	4	149	149	165
180 plus days	7	302	271	425
Summary	57	82	55	425

Legal Status by Average LOS at Snapshot on September 30, 2007.

	<u>Detained</u>		<u>Sentenced</u>		<u>Total</u>	
	No.	LOS	No.	LOS	No.	LOS
Family Court	27	60	7	61	34	60
30 days or less	12	15	5	11	17	14
31 days or more	15	96	2	186	17	106
Superior Court	22	107	1	258	23	114
120 days or less	16	56	0	.	16	56
121 days or more	6	243	1	258	7	245
Total	49	81	8	86	57	82

Youth's Involvement on September 30, 2007.

Detained	Number	LOS in days
Aftercare	2	94
Child Mental Health	3	73
Division of Family Services	1	90
Serious Juvenile Offender and Comprehensive Aftercare Program	4	84
Family Court detainees	27	60
Superior Court detainees	22	107
Sentenced		
Family Court	7	61
Superior Court	1	258

Population Demographics on September 30, 2007.

Race/ethnicity and age	Gender		Total	
	Female	Male	Number	Percent
African American				
12	0	1	1	2
13	1	4	5	9
14	2	1	3	5
15	0	6	6	11
16	0	11	11	19
17	2	9	11	19
18	0	1	1	2
Subtotal	5	33	38	67
White				
14	0	3	3	5
15	0	4	4	7
16	0	7	7	12
17	0	4	4	7
18	0	1	1	2
Subtotal	0	19	19	33
Total	5	52	57	100

Third Quarter 2007 Releases.

To whom released/program	Number	Percent	LOS in days	
			Mean	Max.
Releases to the community				
Department of Correction, probation	1	1	7	7
Community Services, Abraxas Level III	1	1	43	43
Community Services, Abraxas Level IIIA	1	1	9	9
Community Services, Camelot non-secure detention	7	7	2	4
Community Services, Peoples Place II	1	1	2	2
Community Services, Peoples Place II, non-secure	2	2	8	12
Community Services, Providence non-secure	1	1	1	1
Division of Family Services	2	2	2	3
Parent	23	21	21	85
Relative	1	1	219	219
Subtotal	40	38	20	219
Releases to a secure placement				
Community Services, Chamberlain Academy	5	5	40	64
Community Services, Clarinda Academy	2	2	76	80
Community Services, Cove PREP	1	1	15	15
Community Services, Glen Mills Schools	2	2	62	62
Community Services, Hennepin County Home School	1	1	60	60
Community Services, Kids Peace	1	1	12	12
Community Services, Mountain Manor	3	3	23	37
Community Services, Southwest Indiana	2	2	51	58
Community Services, Springfield Academy	2	2	74	85
Community Services, Stetson School Inc.	1	1	54	54
Community Services, Summit Academy	1	1	44	44
Community Services, The Pines	1	1	46	46
Community Services, Today, Inc.	2	2	79	118
Community Services, VisionQuest Boot Camp	1	1	76	76
Department of Correction	2	2	80	108
Department of Correction, YCOP	4	4	137	216
YRS, Ferris School for Boys	11	11	100	303
YRS, Grace Cottage	2	2	9	15
YRS, New Castle County Detention Center	16	15	27	69
YRS, Snowden Cottage	4	4	12	23
Subtotal	64	62	55	303
Total releases	104	100	42	303

Legal Status by Average LOS at Release, Third Quarter 2007.

	<u>Detained</u>		<u>Sentenced</u>		<u>Total</u>	
	No.	LOS	No.	LOS	No.	LOS
Family Court	32	12	50	51	82	36
30 days or less	27	5	21	16	48	9
31 days or more	5	53	29	76	34	73
Superior Court	16	47	6	108	22	64
120 days or less	15	36	4	72	19	43
121 days or more	1	216	2	181	3	192
Total	48	24	56	57	104	42

Crime Category at Release, Third Quarter 2007.

Category	Number	Percent	<u>LOS in days</u>	
			Mean	Maximum
Violent felony	51	49	53	303
Violent misdemeanor	2	2	10	19
Non-violent felony	10	10	44	85
Non-violent misdemeanor	18	17	22	118
Drug Court violation	2	2	10	13
Probation violation	19	18	33	85
Administrative hold/Aftercare revocation	2	2	60	108
Total	104	100	42	303