



STATE OF DELAWARE
EXECUTIVE DEPARTMENT
OFFICE OF MANAGEMENT AND BUDGET

To: John Frazer
From: Jorge Rodríguez-Labarca
Date: October 29, 2007
Subject: Second Quarter 2007 Stevenson House Status Report

On June 30, 2007, the Stevenson House was at 5 percent over capacity with a population of 58 and a rated capacity of 55 beds.

Admissions: There were 132 admissions to the Stevenson House during the second quarter of 2007.

Admission demographics: Of the 132 admissions, 21 were females and 111 were males. During the second quarter 72 African Americans and 60 whites were admitted to the Stevenson House.

Leading charges at admission: The most frequent leading charges at admission for the second quarter were internal transfer, 21; and, robbery in the first degree and violation of probation, 11. 41 youth, or 31 percent, were admitted to the Stevenson House for violent felonies.

Length of stay: On June 30, there were 58 youth at the Stevenson House with an average length of stay (LOS) of 63 days and a maximum LOS of 333 days.

Of the 58 youth, there were 34 Family Court youth with an average LOS of 46 days and 24 Superior Court youth with an average LOS of 87 days.

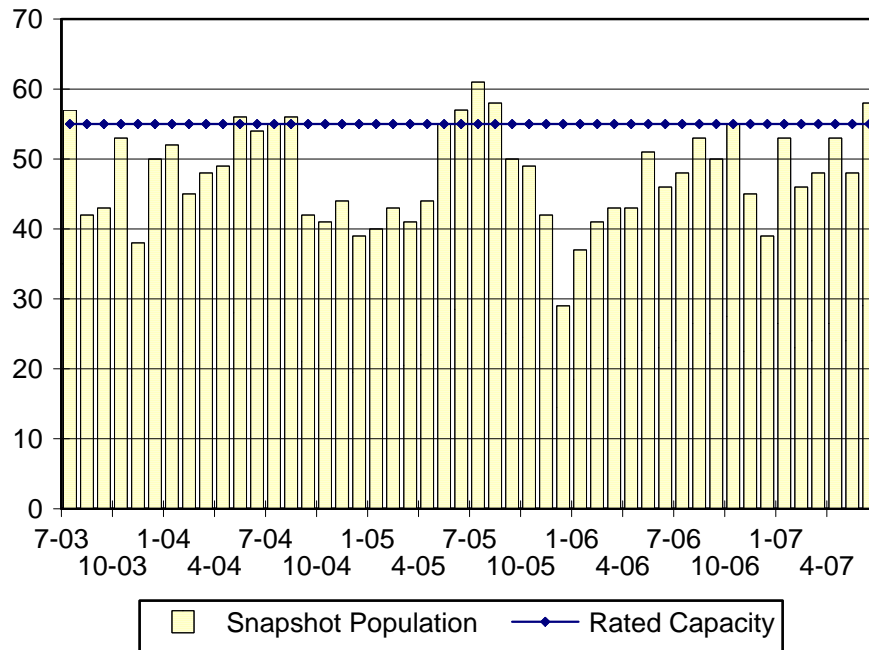
Snapshot demographics: Of the 58 youth, six were female and 52 were male, while there were 41 African Americans and 17 whites.

Youth's status: On June 30, there were 35 detained and 23 adjudicated youth.

Releases: 120 youth were released during the second quarter of 2007 with an average LOS of 26 days, and a maximum of 240 days.

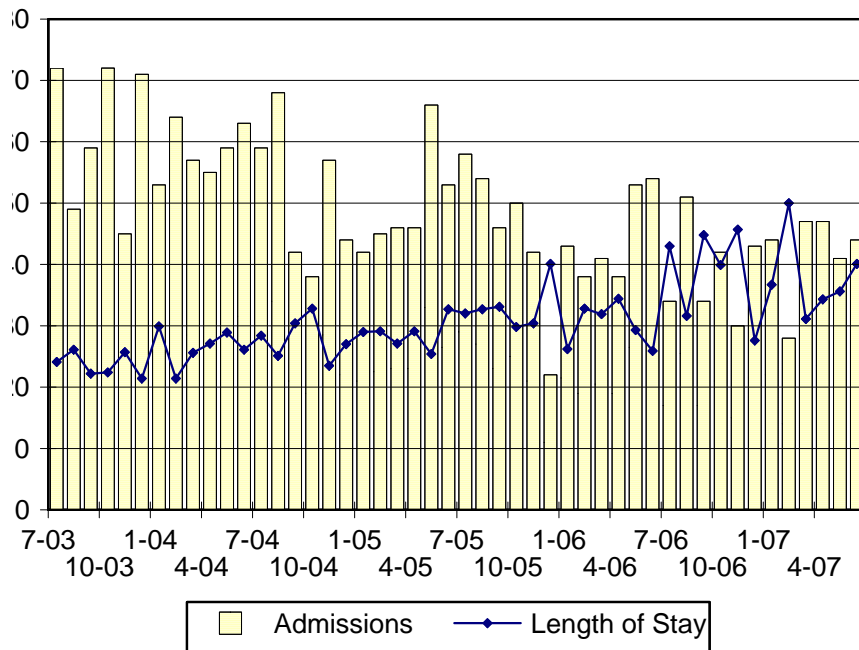


Stevenson House Snapshot Population and Rated Capacity



Snapshot populations are taken at the end of any given month.

Stevenson House Admissions and Time at Stevenson House



Length of Stay: Average length of stay in days at the Stevenson House given monthly admissions and populations.

Admissions, Second Quarter 2007.

Month	Number	Percent
April	47	36
May	41	31
June	44	33
Total	132	100

Admission Demographics, Second Quarter 2007.

Race/ethnicity and age	Gender		Total	
	Female	Male	Number	Percent
African American				
12	0	1	1	1
13	1	5	6	5
14	0	9	9	7
15	4	12	16	12
16	1	13	14	11
17	1	23	24	18
18	0	2	2	2
Subtotal	7	65	72	55
White				
12	1	1	2	2
13	0	1	1	1
14	0	7	7	5
15	3	7	10	8
16	7	12	19	14
17	3	17	20	15
18	0	1	1	1
Subtotal	14	46	60	45
Total	21	111	132	100

Admissions Profile for
Second Quarter 2007 Stevenson House Admittees.

Admissions	Youth			Admissions		
	Number	Percent	Cum. %	Number	Percent	Cum. %
Total	132	100%	100%	640	100%	100%
First admission	46	35%	35%	46	7%	7%
Multiple admissions	86	65%	65%	594	93%	93%
2 nd	13	10%	45%	26	4%	11%
3 rd	11	8%	53%	33	5%	16%
4 th	13	10%	63%	52	8%	25%
5 th	7	5%	68%	35	5%	30%
6 th	8	6%	74%	48	8%	38%
7 th	10	8%	82%	70	11%	48%
8 th	2	2%	83%	16	3%	51%
9 th	6	5%	88%	54	8%	59%
10 th	5	4%	92%	50	8%	67%
11 th	1	1%	92%	11	2%	69%
12 th	1	1%	93%	12	2%	71%
13 th	0	.	93%	0	.	71%
14 th	1	1%	94%	14	2%	73%
15 th	2	2%	95%	30	5%	78%
16 th	1	1%	96%	16	3%	80%
17 th	0	.	96%	0	.	80%
18 th	1	1%	97%	18	3%	83%
19 th	0	.	97%	0	.	83%
20 th	0	.	97%	0	.	83%
21 st	1	1%	98%	21	3%	86%
22 nd	0	.	98%	0	.	86%
23 rd	0	.	98%	0	.	86%
24 th	1	1%	98%	24	4%	90%
...	.	.	98%	.	.	90%
29 th	1	1%	99%	29	5%	95%
...	.	.	99%	.	.	95%
35 th	1	1%	100%	35	5%	100%

Note: First admission means that, heretofore, a juvenile had never been admitted to Secure Detention, Level III Residential, Level IV, Level V, nor Division of Family Services (DFS) and Child Mental Health (CMH) programs that provide residential services. Included in the count of multiple admissions are those admitted to Secure Detention, Level III Residential, Level IV, Level V, and DFS and CMH programs that provide residential services which are classified by DSCYF as crisis bed; mental health; residential group care; treatment center; residential Interagency Collaborative Team; residential treatment, mental health; and residential treatment, substance abuse.

**Admission Profile by Dispositional
Level for Second Quarter 2007 Stevenson House Admittees.**

Admissions	Number and percent of youth							
	Sec. Det.		L. V		L. IV		L. IIIR	
	N.	%	N.	%	N.	%	N.	%
Total	132	100	132	100	133	100	132	100
No prior admissions	60	45	83	63	84	63	53	40
Multiple admissions	72	55	49	37	49	37	79	60
2 nd	33	25	27	20	29	22	28	21
3 rd	10	8	15	11	7	5	24	18
4 th	7	5	6	5	5	4	18	14
5 th	3	2	0	.	2	2	4	3
6 th	7	5	1	1	3	2	3	2
7 th	2	2	0	.	2	2	1	1
8 th	3	2	0	.	0	.	0	.
9 th	4	3	0	.	1	1	0	.
10 th	1	1	0	.	0	.	1	1
11 th	1	1	0	.	0	.	0	.
12 th	0	.	0	.	0	.	0	.
13 th	1	1	0	.	0	.	0	.

Note: Included in the count of multiple admissions are those admitted to Secure Detention (Sec. Det.), Level III Residential (L. IIIR), Level IV, Level V, and Division of Family Services and Child Mental Health programs that provide residential services which are classified by DSCYF as crisis bed; mental health; residential group care; treatment center; residential Interagency Collaborative Team; residential treatment, mental health; and residential treatment, substance abuse.

This table shows that 55 percent of youth admitted to the Stevenson House during the second quarter of 2007 had prior admissions to secure detention, 37 percent to Level V, 37 percent to Level IV, and 60 percent to Level IIIR. Twenty-six of the 60 youth without prior detention admissions had prior admissions to Levels IIIR, IV and/or V.

Leading Charge at Admission, Second Quarter 2007.

Detained felonies and misdemeanors, 10 Del.C. § 1007(a)(2)	Total	Gender		Minority	
		F	M	W	M
Arson in the second degree	1	0	1	1	0
Assault in the second degree	3	0	3	3	0
Assault in the third degree	5	1	4	5	0
Burglary in the second degree	1	0	1	0	1
Burglary in the third degree	2	0	2	1	1
Carrying a concealed deadly weapon	1	0	1	0	1
Failure to register as a sex offender	1	0	1	0	1
Menacing, aggravated	2	0	2	1	1
Own or use an animal for the purpose of fighting	1	0	1	0	1
Possession of a deadly weapon during the commission of a felony	2	0	2	1	1
Possession of a destructive weapon	1	0	1	1	0
Possession of a firearm during the commission of a felony	4	0	4	2	2
Possession of a weapon in a safe school zone	1	1	0	0	1
Possession with intent to deliver narcotics	2	0	2	0	2
Possession with intent to deliver non-narcotics	1	0	1	1	0
Rape in the first degree	2	0	2	0	2
Rape in the second degree	3	0	3	3	0
Resisting arrest with force or violence, class G felony	1	1	0	0	1
Robbery in the first degree	8	0	8	2	6
Robbery in the second degree	2	0	2	0	2
Theft, felony	1	1	0	1	0
Subtotal	45	4	41	22	23
Failure to appear, 10 Del.C. § 1007(a)(3)					
Failure to appear in court	7	2	5	1	6
Subtotal	7	2	5	1	6
Administrative violations and holds					
Administrative hold	6	1	5	2	4
Administrative hold, Aftercare revocation	5	2	3	4	1
Administrative hold, internal transfer	17	1	16	1	16
Subtotal	28	4	24	7	21

Leading Charge at Admission, Second Quarter 2007.

Detained admissions for charges not referenced in 10 Del.C. § 1007	Total	Gender		Minority	
		F	M	W	M
Criminal impersonation	1	1	0	0	1
Escape in the third degree	1	0	1	1	0
Offensive touching	5	2	3	5	0
Refusal to submit to finger print or photos	1	0	1	1	0
Resisting arrest	2	0	2	1	1
Theft, misdemeanor	3	0	3	3	0
Subtotal	13	3	10	11	2
Sentenced admissions pursuant to an adjudication					
Burglary in the third degree	2	0	2	0	2
Carrying a concealed deadly weapon	1	0	1	0	1
Conspiracy in the second degree	1	0	1	1	0
Criminal contempt	1	1	0	1	0
Drug Court violation	4	2	2	4	0
Internal transfer	4	1	3	2	2
Offensive touching	1	0	1	0	1
Possession of drug paraphernalia	1	0	1	0	1
Possession or use of a non-narcotic	1	0	1	1	0
Possession or use of narcotics	1	0	1	0	1
Rape in the fourth degree	2	0	2	1	1
Rape in the second degree	1	0	1	1	0
Robbery in the first degree	3	1	2	1	2
Robbery in the first degree, attempted	1	0	1	0	1
Theft of a motor vehicle	1	0	1	0	1
Theft, felony	1	0	1	0	1
Unlawful sexual contact in the second degree	1	0	1	1	0
Violation of curfew	1	1	0	0	1
Violation of probation	5	0	5	2	3
Subtotal	33	6	27	15	18
Violation of probation pursuant to 11 Del.C. § 4334					
Violation of probation	6	2	4	2	4
Subtotal	6	2	4	2	4
Total	132	21	111	58	74

Crime Category at Admission, Second Quarter 2007.

<u>Category</u>	<u>Number</u>	<u>Percent</u>
Violent felony	41	31
Violent misdemeanor	6	5
Non-violent felony	13	10
Non-violent misdemeanor	24	18
Drug Court violation	4	3
Probation violation	11	8
Administrative hold/Aftercare revocation	32	24
Unclassified violation	1	1
Total	132	100

While 11 youth were admitted solely for a violation of probation (VOP), another 19 had a VOP and an arrest for another crime. A total of 30 youth were charged with VOP.

Length of Stay on June 30, 2007.

<u>LOS in intervals</u>	<u>Youth</u>	<u>Length of Stay</u>		
	<u>Number</u>	<u>Average</u>	<u>Median</u>	<u>Maximum</u>
1 to 3 days	2	2	2	2
4 to 14 days	15	8	9	14
15 to 29 days	9	19	17	25
30 to 59 days	15	42	40	53
60 to 119 days	5	67	67	73
120 to 179 days	7	159	166	179
180 plus days	5	257	258	333
Summary	58	63	33	333

Legal Status by Average LOS at Snapshot on June 30, 2007.

	<u>Detained</u>		<u>Sentenced</u>		<u>Total</u>	
	<u>No.</u>	<u>LOS</u>	<u>No.</u>	<u>LOS</u>	<u>No.</u>	<u>LOS</u>
Family Court	12	52	22	43	34	46
30 days or less	6	8	12	9	18	9
31 days or more	6	96	10	85	16	89
Superior Court	23	84	1	166	24	87
120 days or less	16	35	0	.	16	35
121 days or more	7	194	1	166	8	191
Total	35	73	23	49	58	63

Youth's Involvement on June 30, 2007.

Detained	Number	LOS in days
Aftercare	4	34
Child Mental Health	6	34
Division of Family Services	1	68
Serious Juvenile Offender and Comprehensive Aftercare Program	10	59
Family Court detainees	12	52
Superior Court detainees	23	84
Sentenced	Number	LOS in days
Family Court	22	43
Superior Court	1	166

Population Demographics on June 30, 2007.

Race/ethnicity and age	Gender		Total	
	Female	Male	Number	Percent
African American				
12	0	1	1	2
13	1	2	3	5
14	0	2	2	3
15	1	8	9	16
16	0	5	5	9
17	1	18	19	33
18	0	2	2	3
Subtotal	3	38	41	71
White				
12	1	0	1	2
13	0	1	1	2
14	0	3	3	5
15	1	3	4	7
16	1	3	4	7
17	0	4	4	7
Subtotal	3	14	17	29
Total	6	52	58	100

Second Quarter 2007 Releases.

To whom released/program	Number	Percent	LOS in days	
			Mean	Max.
Releases to the community				
Community Services, Abraxas, electronic monitoring	2	2	2	3
Community Services, Abraxas, Level IIIA	2	2	15	22
Community Services, Peoples Place II	2	2	3	4
Community Services, Peoples Place II, non-secure det.	2	2	3	3
Community Services, VisionQuest, FCIM	1	1	6	6
Community Services, Camelot, non-secure detention	4	3	3	6
Parent	32	27	21	146
Relative	3	3	7	14
Subtotal	48	41	16	146
Releases to a secure placement				
Child Mental Health, Brenford RTC	1	1	10	10
Child Mental Health, Riverside Treatment Services	1	1	42	42
Child Mental Health, Rockford Center	2	2	45	46
Community Services, Chamberlain Academy	3	3	45	72
Community Services, Mountain Manor	5	4	20	40
Community Services, Southwest Indiana	3	3	79	134
Community Services, Springfield Academy	4	3	45	72
Community Services, Stetson School, Inc.	1	1	2	2
Community Services, Summit Academy	1	1	30	30
Community Services, University Behavioral Center	1	1	2	2
Community Services, VisionQuest Boot Camp	2	2	30	30
Community Services, Youth Services Agency	4	3	21	37
Department of Correction	3	3	171	240
Department of Correction, YCOP	3	3	37	48
YRS, Ferris School for Boys	12	10	30	120
YRS, Grace Cottage	2	2	6	8
YRS, New Castle County Detention Center	21	18	16	31
YRS, Snowden Cottage	2	2	43	64
YRS, Stevenson House Detention Center	1	1	14	14
Subtotal	72	59	34	240
Total releases	120	100	26	240

Legal Status by Average LOS at Release, Second Quarter 2007.

	<u>Detained</u>		<u>Sentenced</u>		<u>Total</u>	
	No.	LOS	No.	LOS	No.	LOS
Family Court	60	14	46	35	106	23
30 days or less	54	8	29	14	83	10
31 days or more	6	65	17	70	23	69
Superior Court	9	51	5	56	14	53
120 days or less	8	28	4	19	12	25
121 days or more	1	240	1	208	2	224
Total	69	19	51	37	120	26

Crime Category at Release, Second Quarter 2007.

Category	Number	Percent	<u>LOS in days</u>	
			Mean	Maximum
Violent felony	52	43	27	208
Violent misdemeanor	6	5	31	146
Non-violent felony	11	9	49	240
Non-violent misdemeanor	17	14	11	64
Drug Court violation	4	3	8	10
Probation violation	15	13	29	86
Administrative hold/Aftercare revocation	14	12	24	64
Unclassified violation	1	1	6	6
Total	120	100	26	240