



STATE OF DELAWARE  
EXECUTIVE DEPARTMENT  
OFFICE OF MANAGEMENT AND BUDGET

To: John Frazer  
From: Jorge Rodríguez-Labarca  
Date: July 20, 2007  
Subject: First Quarter 2007 Stevenson House Status Report

---

On March 31, 2007, the Stevenson House was at 87 percent of capacity with a population of 48 and a rated capacity of 55 beds.

*Admissions:* There were 119 admissions to the Stevenson House during the first quarter of 2007.

*Admission demographics:* Of the 119 admissions, 29 were females and 90 were males. During the first quarter 80 African Americans, 2 Hispanics and 37 whites were admitted to the Stevenson House.

*Leading charges at admission:* The most frequent leading charges at admission for the first quarter were violation of probation, 22; and, internal transfer, 11. 32 youth, or 26 percent, were admitted to the Stevenson House for violent felonies.

*Length of stay:* On March 31, there were 48 youth at the Stevenson House with an average length of stay (LOS) of 58 days and a maximum LOS of 277 days.

Of the 48 youth, there were 26 Family Court youth with an average LOS of 42 days and 22 Superior Court youth with an average LOS of 78 days.

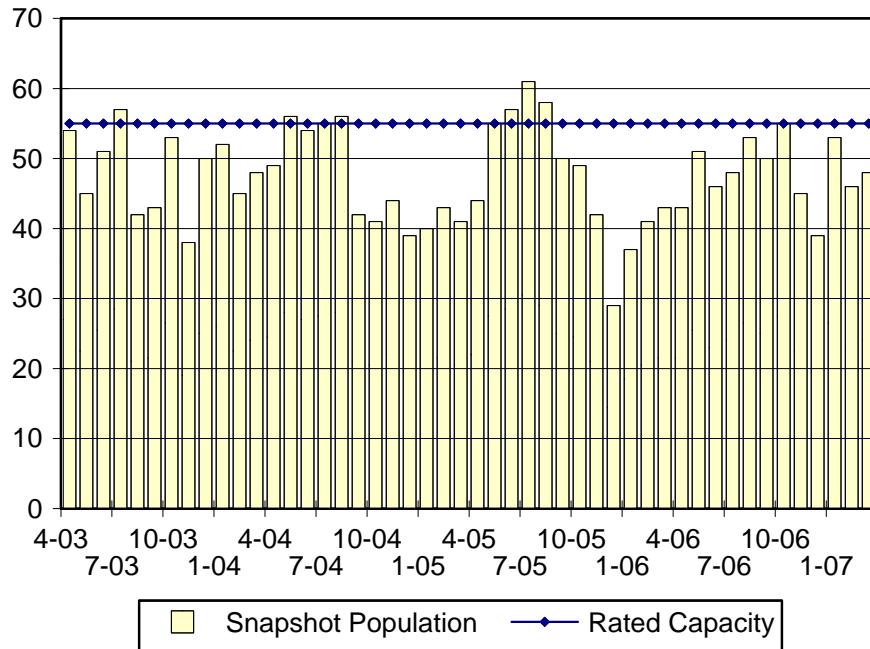
*Snapshot demographics:* Of the 39 youth, nine were female and 39 were male, while there were 39 African Americans, 8 whites, and one Hispanic.

*Youth's status:* On March 31, there were 26 detained and 22 adjudicated youth.

*Releases:* 110 youth were released during the first quarter of 2007 with an average LOS of 34 days, and a maximum of 328 days.

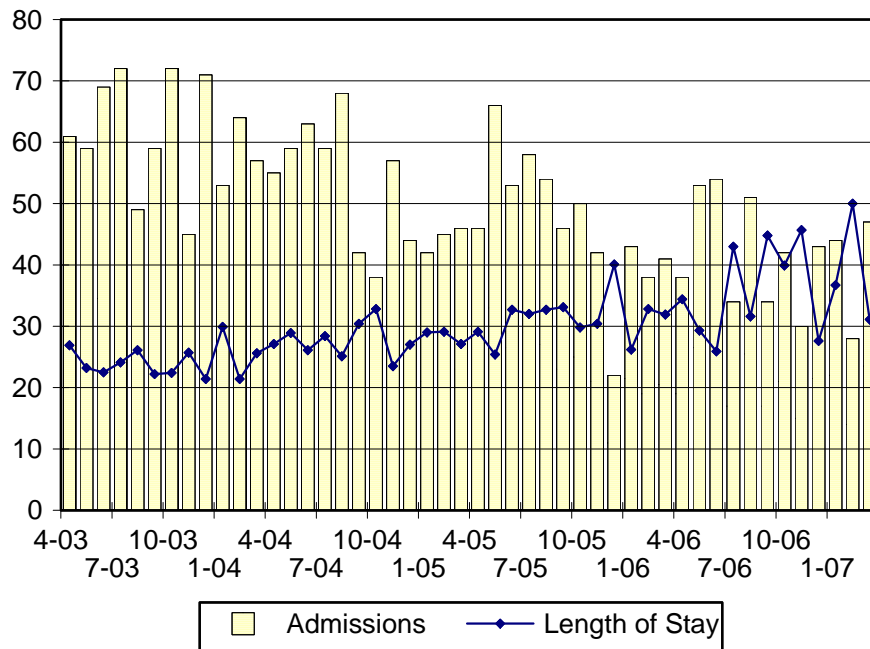


### Stevenson House Snapshot Population and Rated Capacity



Snapshot populations are taken at the end of any given month.

### Stevenson House Admissions and Time at Stevenson House



Length of Stay: Average length of stay in days at the Stevenson House given monthly admissions and populations.

Admissions, First Quarter 2007.

Month	Number	Percent
January	44	37
February	28	24
March	47	39
Total	119	100

Admission Demographics, First Quarter 2007.

Race/ethnicity and age	Gender		Total	
	Female	Male	Number	Percent
African American				
13	3	4	7	6
14	0	10	10	8
15	4	14	18	15
16	4	17	21	18
17	7	14	21	18
18	1	2	3	3
Subtotal	19	60	80	67
Hispanic				
16	0	1	1	1
18	0	1	1	1
Subtotal	0	2	2	2
White				
14	1	2	3	3
15	2	4	6	5
16	3	8	11	9
17	4	13	17	14
Subtotal	10	27	37	31
Total	29	90	119	100

**Admissions Profile for  
First Quarter 2007 Stevenson House Admittees.**

Admissions	Youth			Admissions		
	Number	Percent	Cum. %	Number	Percent	Cum. %
Total	119	100%	100%	616	100%	100%
First admission	30	25%	25%	30	5%	5%
Multiple admissions	89	75%	75%	586	95%	95%
2 <sup>nd</sup>	15	13%	38%	30	5%	10%
3 <sup>rd</sup>	13	11%	49%	39	6%	16%
4 <sup>th</sup>	13	11%	60%	52	8%	25%
5 <sup>th</sup>	7	6%	66%	35	6%	30%
6 <sup>th</sup>	10	8%	74%	60	10%	40%
7 <sup>th</sup>	5	4%	78%	35	6%	46%
8 <sup>th</sup>	2	2%	80%	16	3%	48%
9 <sup>th</sup>	4	3%	83%	36	6%	54%
10 <sup>th</sup>	4	3%	87%	40	6%	61%
11 <sup>th</sup>	4	3%	90%	44	7%	68%
12 <sup>th</sup>	3	3%	92%	36	6%	74%
13 <sup>th</sup>	0	.	92%	0	.	74%
14 <sup>th</sup>	1	1%	93%	14	2%	76%
15 <sup>th</sup>	2	2%	95%	30	5%	81%
16 <sup>th</sup>	0	.	95%	0	.	81%
17 <sup>th</sup>	3	3%	97%	51	8%	89%
18 <sup>th</sup>	0	.	97%	0	.	89%
19 <sup>th</sup>	0	.	97%	0	.	89%
20 <sup>th</sup>	1	1%	98%	20	3%	92%
21 <sup>st</sup>	1	1%	99%	21	3%	96%
22 <sup>nd</sup>	0	.	99%	0	.	96%
23 <sup>rd</sup>	0	.	99%	0	.	96%
24 <sup>th</sup>	0	.	99%	0	.	96%
25 <sup>th</sup>	0	.	99%	0	.	96%
26 <sup>th</sup>	0	.	99%	0	.	96%
27 <sup>th</sup>	1	1%	100%	27	4%	100%

Note: First admission means that, heretofore, a juvenile had never been admitted to Secure Detention, Level III Residential, Level IV, Level V, nor Division of Family Services (DFS) and Child Mental Health (CMH) programs that provide residential services. Included in the count of multiple admissions are those admitted to Secure Detention, Level III Residential, Level IV, Level V, and DFS and CMH programs that provide residential services which are classified by DSCYF as crisis bed; mental health; residential group care; treatment center; residential Interagency Collaborative Team; residential treatment, mental health; and residential treatment, substance abuse.

**Admission Profile by Dispositional  
Level for First Quarter 2007 Stevenson House Admittees.**

Admissions	Number and percent of youth							
	Sec. Det.		L. V		L. IV		L. IIIR	
	N.	%	N.	%	N.	%	N.	%
Total	119	100	119	100	119	100	119	100
No prior admissions	49	41	73	61	71	60	42	35
Multiple admissions	70	59	46	39	48	40	77	65
2 <sup>nd</sup>	28	24	22	18	26	22	19	16
3 <sup>rd</sup>	16	13	14	12	9	8	27	23
4 <sup>th</sup>	12	10	5	4	6	5	19	16
5 <sup>th</sup>	2	2	5	4	2	2	3	3
6 <sup>th</sup>	5	4	0	.	3	3	5	4
7 <sup>th</sup>	3	3	0	.	1	1	2	2
8 <sup>th</sup>	1	1	0	.	1	1	1	1
9 <sup>th</sup>	0	.	0	.	0	.	0	.
10 <sup>th</sup>	1	1	0	.	0	.	1	1
11 <sup>th</sup>	2	2	0	.	0	.	0	.

Note: Included in the count of multiple admissions are those admitted to Secure Detention (Sec. Det.), Level III Residential (L. IIIR), Level IV, Level V, and Division of Family Services and Child Mental Health programs that provide residential services which are classified by DSCYF as crisis bed; mental health; residential group care; treatment center; residential Interagency Collaborative Team; residential treatment, mental health; and residential treatment, substance abuse.

This table shows that 59 percent of youth admitted to the Stevenson House during the first quarter of 2007 had prior admissions to secure detention, 39 percent to Level V, 40 percent to Level IV, and 65 percent to Level IIIR. Twenty-nine of the 49 youth without prior detention admissions had prior admissions to Levels IIIR, IV and/or V.

Leading Charge at Admission, First Quarter 2007.

Detained felonies and misdemeanors, 10 Del.C. § 1007(a)(2)	Total	Gender		Minority	
		F	M	W	M
Assault in the second degree	5	2	3	3	2
Assault in the third degree	1	0	1	0	1
Burglary in the second degree	1	0	1	0	1
Burglary in the third degree	3	0	3	0	3
Criminal mischief, felony g	1	0	1	0	1
Forgery in the second degree	1	0	1	1	0
Menacing, aggravated	1	0	1	0	1
Murder in the second degree, attempted	1	1	0	0	1
Possession of a deadly weapon by a person prohibited, firearm	1	0	1	1	0
Possession of a deadly weapon during the commission of a felony	2	2	0	0	2
Possession of a firearm during the commission of a felony	2	0	2	0	2
Possession with intent to deliver narcotics	4	2	2	1	3
Possession with intent to deliver non-narcotics	1	0	1	1	0
Rape in the second degree	1	0	1	0	1
Receiving stolen property, felony	2	1	1	0	2
Reckless endangering in the first degree	1	1	0	0	1
Riot	1	1	0	0	1
Robbery in the first degree	6	0	6	0	6
Robbery in the second degree	1	0	1	0	1
Theft, felony	1	0	1	0	1
Unlawful sexual intercourse in the first degree, attempted	1	0	1	1	0
Wearing a disguise during the commission of a felony	1	0	1	0	1
Subtotal	39	10	29	8	31
Failure to appear, 10 Del.C. § 1007(a)(3)					
Failure to appear in court	6	0	6	2	4
Subtotal	6	0	6	2	4

Leading Charge at Admission, First Quarter 2007.

	Total	Gender		Minority	
		F	M	W	M
Detained admissions for charges not referenced in 10 Del.C. § 1007					
Conspiracy in the third degree	1	0	1	0	1
Disorderly conduct	2	0	2	1	1
Escape in the third degree	1	1	0	1	0
Offensive touching	2	2	0	1	1
Possession of drug paraphernalia	2	1	1	1	1
Possession or use of narcotics	1	0	1	1	0
Reckless endangering in the second degree	2	0	2	0	2
Resisting arrest	1	0	1	1	0
Terroristic threatening, misdemeanor	1	0	1	1	0
Theft, misdemeanor	1	0	1	0	1
Theft, misdemeanor, attempted	1	0	1	1	0
<b>Subtotal</b>	<b>15</b>	<b>4</b>	<b>11</b>	<b>8</b>	<b>7</b>
Administrative violations and holds					
Administrative hold	4	1	3	2	2
Administrative hold, Aftercare revocation	6	2	4	1	5
Administrative hold, internal transfer	11	1	10	0	11
<b>Subtotal</b>	<b>21</b>	<b>4</b>	<b>17</b>	<b>3</b>	<b>18</b>
Fugitive from another state, 11 Del.C. § 2513					
Fugitive from another state	1	1	0	1	0
<b>Subtotal</b>	<b>1</b>	<b>1</b>	<b>0</b>	<b>1</b>	<b>0</b>

Leading Charge at Admission, First Quarter 2007.

	Total	Gender		Minority	
		F	M	W	M
Sentenced admissions pursuant to an adjudication					
Bombs, incendiary or explosive devices, molotov cocktails	1	0	1	1	0
Burglary in the third degree	2	0	2	1	1
Carrying a concealed deadly weapon	1	1	0	0	1
Criminal contempt	2	1	1	1	1
Disorderly conduct	1	0	1	1	0
Menacing, aggravated	1	0	1	0	1
Possession of a deadly weapon by a person prohibited	1	1	0	0	1
Possession of a deadly weapon during the commission of a felony	1	1	0	0	1
Reckless endangering in the second degree	1	0	1	1	0
Shoplifting, misdemeanor	1	0	1	0	1
Theft, misdemeanor	2	1	1	0	2
Unlawful sexual contact in the second degree	1	0	1	0	1
Violation of probation	17	5	12	7	10
Subtotal	32	10	22	12	20
Violation of probation pursuant to 11 Del.C. § 4334					
Violation of probation	5	0	5	3	2
Subtotal	5	0	5	3	2
Total	119	29	90	37	82

Crime Category at Admission, First Quarter 2007.

Category	Number	Percent
Violent felony	32	26
Violent misdemeanor	6	5
Non-violent felony	14	10
Non-violent misdemeanor	23	20
Probation violation	22	18
Administrative hold/Aftercare revocation	22	18
Total	119	100

While 22 youth were admitted solely for a violation of probation (VOP), another eight had a VOP and an arrest for another crime. A total of 30 youth were charged with VOP.



Length of Stay on March 31, 2007.

LOS in intervals	<u>Youth</u>	<u>Length of Stay</u>		
	Number	Average	Median	Maximum
1 to 3 days	4	2	2	3
4 to 14 days	18	5	4	11
15 to 29 days	3	21	23	24
30 to 59 days	6	46	49	59
60 to 119 days	9	86	82	105
120 to 179 days	3	139	127	167
180 plus days	5	236	237	277
Summary	48	58	24	277

Legal Status by Average LOS at Snapshot on March 31, 2007.

	<u>Detained</u>		<u>Sentenced</u>		<u>Total</u>	
	No.	LOS	No.	LOS	No.	LOS
Family Court	21	32	5	80	26	42
30 days or less	14	7	3	6	17	7
31 days or more	7	83	2	190	9	107
Superior Court	22	78	0	.	22	78
120 days or less	16	39	0	.	16	39
121 days or more	6	182	0	.	6	182
Total	43	56	5	80	48	58

Youth's Involvement on March 31, 2007.

Detained	Number	LOS in days
Aftercare	5	76
Child Mental Health	3	27
Division of Family Services	3	30
Serious Juvenile Offender and Comprehensive Aftercare Program	13	60
Family Court detainees	21	32
Superior Court detainees	22	78
Sentenced		
Family Court	5	80

Population Demographics on March 31, 2007.

Race/ethnicity and age	Gender		Total	
	Female	Male	Number	Percent
African American				
13	1	2	3	6
14	0	4	4	8
15	1	5	6	13
16	3	8	11	23
17	3	11	14	29
18	1	0	1	2
Subtotal	9	30	39	81
Hispanic				
16	0	1	1	2
Subtotal	0	1	1	2
White				
15	0	2	2	4
16	0	3	3	6
17	0	3	3	6
Subtotal	0	8	8	17
Total	9	39	48	100

First Quarter 2007 Releases.

To whom released/program	Number	Percent	LOS in days	
			Mean	Max.
<b>Releases to the community</b>				
Community Services, Abraxas- Electronic Monitoring	4	4	38	127
Community Services, Camelot Non-Secure Detention	2	2	3	5
Community Services, Peoples Place II, non-secure det.	4	4	7	12
Division of Family Services	5	4	18	33
Parent	28	25	17	95
Probation	1	1	4	4
Relative	3	3	10	22
<b>Subtotal</b>	<b>47</b>	<b>44</b>	<b>17</b>	<b>127</b>
<b>Releases to a secure placement</b>				
Child Mental Health, Rockford Center	1	1	53	53
Child Mental Health, Seaford House RTC	1	1	24	24
Community Services, Chamberlain Academy General	1	1	44	44
Community Services, Chamberlain Acad. High Impact	3	3	62	80
Community Services, Clarinda Academy	1	1	2	2
Community Services, Glen Mills Schools	2	2	74	131
Community Services, Hennepin County Home School	1	1	54	54
Community Services, Mountain Manor	2	2	31	53
Community Services, Southwest Indiana	2	2	22	40
Community Services, Springfield Academy	4	4	20	43
Community Services, Stetson School Inc.	2	2	141	245
Community Services, Summit Academy	3	3	86	123
Community Services, VisionQuest Boot Camp	2	2	27	46
Community Services, VisionQuest Madalyn	1	1	41	41
Community Services, VisionQuest Morning Star Acad.	1	1	36	36
Community Services, Youth Services Agency	5	5	20	35
Department of Correction	1	1	27	27
Department of Correction, YCOP	4	4	187	328
YRS, Ferris School For Boys	7	6	18	107
YRS, Grace Cottage	8	7	19	38
YRS, New Castle County Detention Center	2	2	5	5
YRS, Snowden Cottage	9	8	45	122
<b>Subtotal</b>	<b>63</b>	<b>56</b>	<b>47</b>	<b>328</b>
<b>Total</b>	<b>110</b>	<b>100</b>	<b>34</b>	<b>328</b>

Legal Status by Average LOS at Release, First Quarter 2007.

	<u>Detained</u>		<u>Sentenced</u>		<u>Total</u>	
	No.	LOS	No.	LOS	No.	LOS
Family Court	47	11	55	42	102	28
30 days or less	43	8	28	13	71	10
31 days or more	4	52	27	73	31	70
Superior Court	6	89	2	172	8	109
120 days or less	4	32	1	15	5	29
121 days or more	2	202	1	328	3	244
Total	53	20	57	47	110	34

Crime Category at Release, First Quarter 2007.

Category	Number	Percent	<u>LOS in days</u>	
			Mean	Maximum
Violent felony	36	33	54	328
Violent misdemeanor	9	8	20	80
Non-violent felony	12	11	18	107
Non-violent misdemeanor	21	19	32	123
Drug Court violation	1	1	7	7
Probation violation	22	20	27	92
Administrative hold/Aftercare revocation	9	8	14	44
Total	110	100	34	328