



**STATE OF DELAWARE
EXECUTIVE DEPARTMENT
OFFICE OF MANAGEMENT AND BUDGET**

To: John Frazer
From: Jorge Rodríguez-Labarca
Date: February 8, 2007
Subject: Fourth Quarter 2006 Stevenson House Status Report

On December 31, 2006, the Stevenson House was at 71 percent of capacity with a population of 39 and a rated capacity of 55 beds.

Admissions: There were 115 admissions to the Stevenson House during the fourth quarter of 2006.

Admission demographics: Of the 115 admissions, 26 were females and 89 were males. During the fourth quarter one Asian American, 61 African Americans, and 53 whites were admitted to the Stevenson House.

Leading charges at admission: The most frequent leading charges at admission for the fourth quarter were violation of probation, 16; robbery in the first degree, 9; and failure to appear in court, 8. 42 youth, or 37 percent, were admitted to the Stevenson House for violent felonies.

Length of stay: On December 31, there were 39 youth at the Stevenson House with an average length of stay (LOS) of 60 days and a maximum LOS of 254 days.

Of the 39 youth, there were 27 Family Court youth with an average LOS of 37 days and 12 Superior Court youth with an average LOS of 109 days.

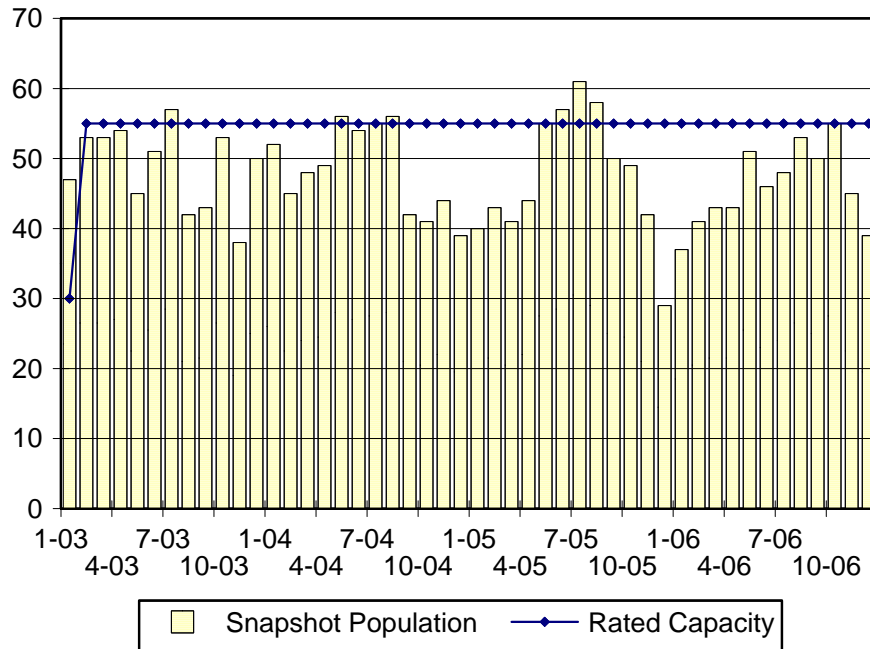
Snapshot demographics: Of the 39 youth, five were female and 34 were male while there were 24 African Americans, 14 whites, and one Hispanics.

Youth's status: On December 31, there were 27 detained and 12 adjudicated youth.

Releases: 125 youth were released during the fourth quarter of 2006 with an average LOS of 38 days, and a maximum of 217 days.

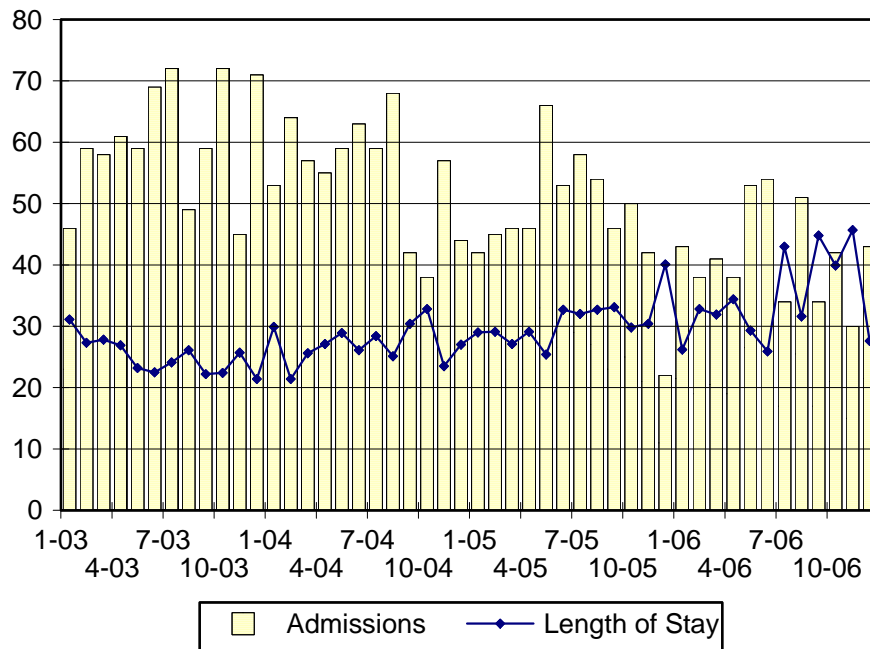


Stevenson House Snapshot Population and Rated Capacity



Snapshot populations are taken at the end of any given month.

Stevenson House Admissions and Time at Stevenson House



Length of Stay: Average length of stay in days at the Stevenson House given monthly admissions and populations.

Admissions, Fourth Quarter 2006.

Month	Number	Percent
October	42	37
November	30	26
December	43	37
Total	115	100

Admission Demographics, Fourth Quarter 2006.

Race/ethnicity and age	Gender		Total	
	Female	Male	Number	Percent
Asian American				
16	0	1	1	1
Subtotal	0	1	1	1
African American				
12	0	1	1	1
13	1	3	4	3
14	2	6	8	7
15	5	9	14	12
16	3	9	12	10
17	2	20	22	19
Subtotal	13	48	61	53
White				
12	0	1	1	1
14	2	2	4	3
15	3	13	16	14
16	3	10	13	11
17	4	14	18	16
18	1	0	1	1
Subtotal	13	40	53	46
Total	26	89	115	100

**Admissions Profile for
Fourth Quarter 2006 Stevenson House Admittees.**

Admissions	Youth			Admissions		
	Number	Percent	Cum. %	Number	Percent	Cum. %
Total	115	100%	100%	403	100%	100%
First admission	53	46%	46%	53	13%	13%
Multiple admissions	62	54%	54%	350	87%	87%
2 nd	15	13%	59%	30	7%	21%
3 rd	9	8%	67%	27	7%	27%
4 th	7	6%	73%	28	7%	34%
5 th	10	9%	82%	50	12%	47%
6 th	5	4%	86%	30	7%	54%
7 th	2	2%	88%	14	3%	58%
8 th	1	1%	89%	8	2%	60%
9 th	3	3%	91%	27	7%	66%
10 th	4	3%	95%	40	10%	76%
11 th	0	.	95%	0	.	76%
12 th	2	2%	97%	24	6%	82%
13 th	1	1%	97%	13	3%	85%
14 th	0	.	97%	0	.	85%
15 th	1	1%	98%	15	4%	89%
16 th	0	.	98%	0	.	89%
17 th	0	.	98%	0	.	89%
18 th	0	.	98%	0	.	89%
19 th	0	.	98%	0	.	89%
20 th	1	1%	99%	20	5%	94%
21 st	0	.	99%	0	.	94%
22 nd	0	.	99%	0	.	94%
23 rd	0	.	99%	0	.	94%
24 th	1	1%	100%	24	6%	100%

Note: First admission means that, heretofore, a juvenile had never been admitted to Secure Detention, Level III Residential, Level IV, Level V, nor Division of Family Services (DFS) and Child Mental Health (CMH) programs that provide residential services. Included in the count of multiple admissions are those admitted to Secure Detention, Level III Residential, Level IV, Level V, and DFS and CMH programs that provide residential services which are classified by DSCYF as crisis bed; mental health; residential group care; treatment center; residential Interagency Collaborative Team; residential treatment, mental health; and residential treatment, substance abuse.

**Admission Profile by Dispositional
Level for Fourth Quarter 2006 Stevenson House Admittees.**

Admissions	Number and percent of youth							
	Sec. Det.		L. V		L. IV		L. IIIR	
	N.	%	N.	%	N.	%	N.	%
Total	115	100	115	100	115	100	115	100
No prior admissions	68	59	79	69	81	70	49	43
Multiple admissions	47	41	36	31	34	30	66	57
2 nd	22	19	22	19	19	17	24	21
3 rd	10	9	11	10	7	6	20	17
4 th	6	5	3	3	6	5	9	8
5 th	3	3	0	.	0	.	4	3
6 th	1	1	0	.	1	1	6	5
7 th	3	3	0	.	0	.	2	2
8 th	1	1	0	.	1	1	0	.
9 th	0	.	0	.	0	.	0	.
10 th	1	1	0	.	0	.	1	1

Note: Included in the count of multiple admissions are those admitted to Secure Detention (Sec. Det.), Level III Residential (L. IIIR), Level IV, Level V, and Division of Family Services and Child Mental Health programs that provide residential services which are classified by DSCYF as crisis bed; mental health; residential group care; treatment center; residential Interagency Collaborative Team; residential treatment, mental health; and residential treatment, substance abuse.

This table shows that 41 percent of youth admitted to the Stevenson House during the fourth quarter of 2006 had prior admissions to secure detention, 31 percent to Level V, 30 percent to Level IV, and 57 percent to Level IIIR. Twenty-nine of the 68 youth without prior detention admissions had prior admissions to Levels IIIR, IV and/or V.

Leading Charge at Admission, Fourth Quarter 2006.

<u>Detained felonies and misdemeanors, 10 Del.C. § 1007(a)(2)</u>	
Assault in the second degree	2
Assault in the second degree, attempted	1
Assault in the third degree	1
Burglary in the second degree	4
Burglary in the third degree	7
Hate crimes	1
Maintaining a vehicle for keeping controlled substances	1
Murder in the first degree, attempted	1
Murder in the second degree, attempted	2
Possession of a deadly weapon during the commission of a felony	2
Possession of a firearm during the commission of a felony	2
Possession with intent to deliver schedule III, IV, or V narcotics	1
Possession with intent to deliver narcotics	3
Possession with intent to deliver non-narcotics	1
Rape in the fourth degree	1
Rape in the second degree	2
Receiving stolen property, felony	1
Reckless endangering in the first degree	1
Robbery in the first degree	9
Robbery in the second degree	3
Theft, felony	1
Theft, felony, attempted	1
Unlawful sexual contact in the second degree	1
Subtotal	49
<u>Failure to appear, 10 Del.C. § 1007(a)(3)</u>	
Failure to appear in court	8
Subtotal	8

Leading Charge at Admission, Fourth Quarter 2006.

<u>Detained admissions not pursuant to 10 Del.C. § 1007</u>	
Criminal mischief, unclassified misdemeanor	1
Driving under the influence	1
Driving without a license	1
Escape in the third degree	1
Offensive touching	3
Possession of drug paraphernalia	1
Possession or use of a non-narcotic	1
Reckless endangering in the second degree	1
Resisting arrest	3
Shoplifting, misdemeanor	2
Terroristic threatening, misdemeanor	1
Theft, misdemeanor	3
Subtotal	19
<u>Administrative violations and holds</u>	
Administrative hold	5
Administrative hold, Aftercare revocation	1
Administrative hold, internal transfer	1
Subtotal	7
<u>Violation of probation pursuant to 11 Del.C. § 4334</u>	
Violation of probation	6
Subtotal	6

Leading Charge at Admission, Fourth Quarter 2006.

<u>Sentenced admissions pursuant to an adjudication</u>	
Criminal contempt	1
Criminal trespassing in the second degree	1
Drug Court violation	2
Indecent exposure in the second degree	1
Internal transfer	1
Menacing, aggravated	1
Possession or use of a non-narcotic	1
Possession with intent to deliver narcotics	1
Possession with intent to deliver non-narcotics	1
Robbery in the second degree	1
Terroristic threatening, misdemeanor	1
Theft, felony	1
Theft, misdemeanor	1
Unauthorized use of a motor vehicle	1
Unlawful sexual contact in the second degree	1
Violation of probation	10
Subtotal	26
Total	115

Crime Category at Admission, Fourth Quarter 2006.

<u>Category</u>	<u>Number</u>	<u>Percent</u>
Violent felony	42	37
Violent misdemeanor	4	3
Non-violent felony	12	10
Non-violent misdemeanor	29	25
Traffic misdemeanor	2	2
Drug Court violation	2	2
Probation violation	16	14
Administrative hold/Aftercare revocation	8	7
Total	115	100

While 16 youth were admitted solely for a violation of probation (VOP), another five had a VOP and an arrest for another crime. A total of 21 youth were charged with VOP.

Length of Stay on December 31, 2006.

LOS in intervals	<u>Youth</u>	<u>Length of Stay</u>		
	Number	Average	Median	Maximum
1 to 3 days	2	3	3	3
4 to 14 days	8	9	9	13
15 to 29 days	5	19	20	24
30 to 59 days	12	38	35	49
60 to 119 days	4	84	81	109
120 to 179 days	6	154	155	168
180 plus days	2	221	221	254
Summary	39	60	35	254

Legal Status by Average LOS at Snapshot on December 31, 2006.

	<u>Detained</u>		<u>Sentenced</u>		<u>Total</u>	
	No.	LOS	No.	LOS	No.	LOS
Family Court	19	33	8	49	27	37
30 days or less	12	11	3	15	15	11
31 days or more	7	70	5	70	12	70
Superior Court	12	109	0	.	12	109
120 days or less	7	60	0	.	7	60
121 days or more	5	179	0	.	5	179
Total	31	62	8	49	39	60

Youth's Involvement on December 31, 2006.

Detained	Number	LOS in days
Aftercare	4	67
Child Mental Health	0	.
Division of Family Services	0	.
Serious Juvenile Offender and Comprehensive Aftercare Program	5	58
Family Court detainees	19	33
Superior Court detainees	12	109
Sentenced		
Family Court	8	49

Population Demographics on December 31, 2006.

Race/ethnicity and age	Gender		Total	
	Female	Male	Number	Percent
African American				
12	0	1	1	3
13	0	3	3	8
14	0	1	1	3
15	1	7	8	21
16	2	2	4	10
17	1	6	7	18
Subtotal	4	20	24	62
Hispanic				
16	0	1	1	3
Subtotal	0	1	1	3
White				
14	1	1	2	5
15	0	4	4	10
16	0	3	3	8
17	0	5	5	13
Subtotal	1	13	14	36
Total	5	34	39	100

Fourth Quarter 2006 Releases.

To whom released/program	Number	Percent	LOS in days	
			Mean	Max.
Releases to the community				
Community Services, Abraxas IIIA, Intensive Home Services	1	1	54	54
Community Services, Abraxas, Electronic Monitoring	1	1	11	11
Community Services, Camelot Non-secure Detention	2	2	4	6
Community Services, P.C.S., MST	1	1	106	106
Community Services, Peoples Place, Non-secure Detention	8	6	10	22
Community Services, Providence, Non-secure Detention	5	4	10	24
Community Services, VisionQuest, FCICM	1	1	27	27
Division of Family Services	4	3	14	28
Parent	42	34	23	250
Relative	8	6	26	101
Subtotal	73	58	21	250
Releases to a secure placement				
Community Services, Chamberlain Academy High Impact	2	2	53	99
Community Services, Clarinda Academy	1	1	67	67
Community Services, Glen Mills Schools	1	1	82	82
Community Services, Southwest Indiana	3	2	125	158
Community Services, Springfield Academy	3	2	77	142
Community Services, Summit Academy	1	1	57	57
Community Services, VisionQuest, Boot Camp	1	1	57	57
Community Services, VisionQuest, Madalyn	2	2	52	84
Community Services, VisionQuest, Quest	2	2	78	85
Community Services, Youth Services Agency	5	4	41	100
Community Services, Today, Inc., Short Term Drug Abuse	4	3	54	80
Department of Correction	1	1	181	181
Department of Correction, YCOP	3	2	184	271
Maryland authorities	1	1	19	19
YRS, Ferris School For Boys	10	8	29	67
YRS, Grace Cottage	4	3	43	114
YRS, New Castle County Detention Center	3	2	34	65
YRS, Snowden Cottage	5	4	45	117
Subtotal	52	42	61	271
Total	125	100	38	271

Legal Status by Average LOS at Release, Fourth Quarter 2006.

	<u>Detained</u>		<u>Sentenced</u>		<u>Total</u>	
	No.	LOS	No.	LOS	No.	LOS
Family Court	63	14	55	50	118	31
30 days or less	56	8	24	12	80	9
31 days or more	7	64	31	79	38	76
Superior Court	3	114	4	195	7	160
120 days or less	2	46	1	82	3	58
121 days or more	1	250	3	232	4	237
Total	66	19	59	60	125	38

Crime Category at Release, Fourth Quarter 2006.

Category	Number	Percent	<u>LOS in days</u>	
			Mean	Maximum
Violent felony	42	34	53	271
Violent misdemeanor	7	6	5	20
Non-violent felony	22	18	28	100
Non-violent misdemeanor	29	23	32	117
Traffic misdemeanor	1	1	4	4
Drug Court violation	1	1	4	4
Probation violation	19	15	43	158
Administrative hold/Aftercare revocation	4	3	35	65
Total	125	100	38	271