



STATE OF DELAWARE
EXECUTIVE DEPARTMENT
OFFICE OF MANAGEMENT AND BUDGET

To: John Frazer
From: Jorge Rodríguez-Labarca
Date: November 17, 2006
Subject: Third Quarter 2006 Stevenson House Status Report

On September 30, 2006, the Stevenson House was at 91 percent of capacity with a population of 50 and a rated capacity of 55 beds.

Admissions: There were 119 admissions to the Stevenson House during the third quarter of 2006.

Admission demographics: Of the 119 admissions, 21 were females and 98 were males. During the third quarter 63 African Americans, 54 whites, and two Hispanics were admitted to the Stevenson House.

Leading charges at admission: The most frequent leading charges at admission for the third quarter were violation of probation, 18; failure to appear in court, 11; and, burglary in the third degree, 9. 38 youth, or 32 percent, were admitted to the Stevenson House for violent felonies.

Length of stay: On September 30, there were 50 youth at the Stevenson House with an average length of stay (LOS) of 58 days and a maximum LOS of 213 days.

Of the 50 youth, there were 39 Family Court youth with an average LOS of 38 days and 11 Superior Court youth with an average LOS of 128 days.

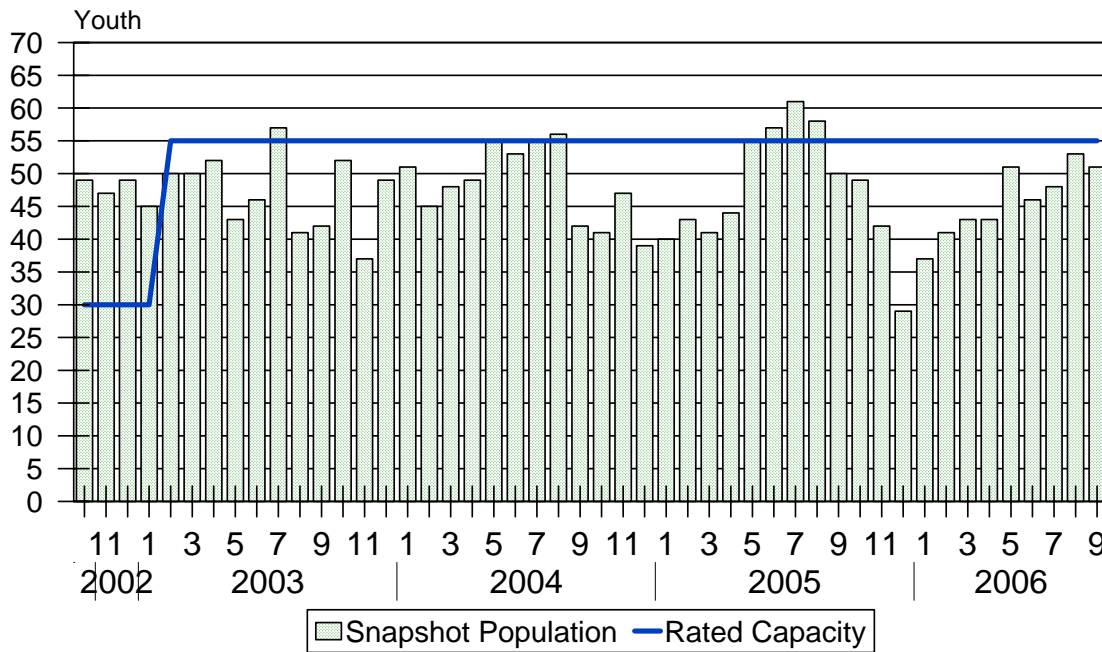
Snapshot demographics: Of the 50 youth, eight were female and 42 were male while there were 32 African Americans, 17 whites, and one Hispanic.

Youth's status: On September 30, there were 42 detained and 8 adjudicated youth.

Releases: 115 youth were released during the third quarter of 2006 with an average LOS of 30 days, and a maximum of 198 days.

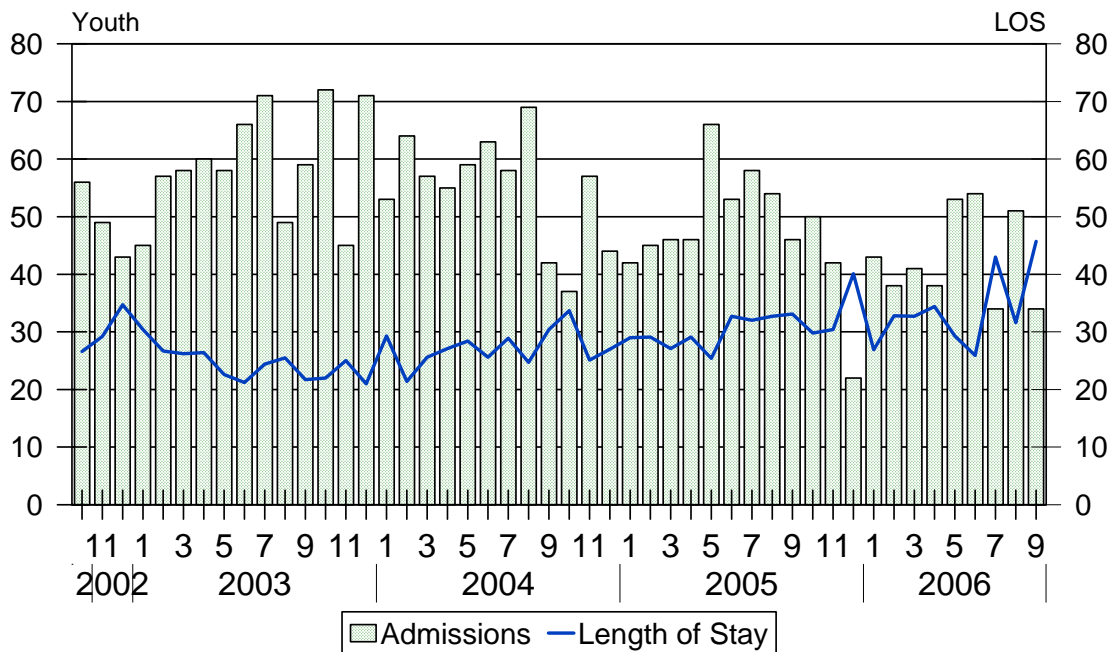


Stevenson House Snapshot Population and Rated Capacity



Snapshot populations are taken at the end of any given month.

Stevenson House Admissions and Time at Stevenson House



Length of Stay: Average length of stay in days at the Stevenson House given monthly admissions and populations.

Admissions, Third Quarter 2006.

Month	Number	Percent
July	34	29
August	51	43
September	34	29
Total	119	100

Admission Demographics, Third Quarter 2006.

Race/ethnicity and age	Gender		Total	
	Female	Male	Number	Percent
African American				
12	0	2	2	2
13	1	2	3	3
14	2	10	12	10
15	3	11	14	12
16	2	10	12	10
17	7	12	19	16
18	0	1	1	1
Subtotal	15	48	63	53
Hispanic				
12	0	1	1	1
16	0	1	1	1
Subtotal	0	2	2	2
White				
13	0	1	1	1
14	1	2	3	3
15	1	10	11	9
16	0	18	18	15
17	3	17	20	17
18	1	0	1	1
Subtotal	6	48	54	45
Total	21	98	119	100

Admissions Profile for
Third Quarter 2006 Stevenson House Admittees.

Admissions	Youth			Admissions		
	Number	Percent	Cum. %	Number	Percent	Cum. %
Total	119	100%	100%	432	100%	100%
First admission	49	41%	41%	49	11%	11%
Multiple admissions	70	59%	59%	383	89%	89%
2 nd	17	14%	55%	34	8%	19%
3 rd	12	10%	66%	36	8%	28%
4 th	9	8%	73%	36	8%	36%
5 th	9	8%	81%	45	10%	46%
6 th	5	4%	85%	30	7%	53%
7 th	4	3%	88%	28	6%	60%
8 th	3	3%	91%	24	6%	65%
9 th	0	.	91%	0	.	65%
10 th	3	3%	93%	30	7%	72%
11 th	3	3%	96%	33	8%	80%
12 th	3	3%	98%	36	8%	88%
13 th	0	.	98%	0	.	88%
14 th	0	.	98%	0	.	88%
15 th	0	.	98%	0	.	88%
16 th	0	.	98%	0	.	88%
17 th	0	.	98%	0	.	88%
18 th	0	.	98%	0	.	88%
19 th	0	.	98%	0	.	88%
20 th	0	.	98%	0	.	88%
21 st	0	.	98%	0	.	88%
22 nd	0	.	98%	0	.	88%
23 rd	1	1%	99%	23	5%	94%
24 th	0	.	99%	0	.	94%
25 th	0	.	99%	0	.	94%
26 th	0	.	99%	0	.	94%
27 th	0	.	99%	0	.	94%
28 th	1	1%	100%	28	6%	100%

Note: First admission means that, heretofore, a juvenile had never been admitted to Secure Detention, Level III Residential, Level IV, Level V, nor Division of Family Services (DFS) and Child Mental Health (CMH) programs that provide residential services. Included in the count of multiple admissions are those admitted to Secure Detention, Level III Residential, Level IV, Level V, and DFS and CMH programs that provide residential services which are classified by DSCYF as crisis bed; mental health; residential group care; treatment center; residential Interagency Collaborative Team; residential treatment, mental health; and residential treatment, substance abuse.

**Admission Profile by Dispositional
Level for Third Quarter 2006 Stevenson House Admittees.**

Admissions	Number and percent of youth							
	Sec. Det.		L. V		L. IV		L. IIIR	
	N.	%	N.	%	N.	%	N.	%
Total	119	100	119	100	119	100	119	100
No prior admissions	62	52	80	67	80	67	54	45
Multiple admissions	57	48	39	33	39	33	65	55
2 nd	30	25	22	18	20	17	33	28
3 rd	13	11	7	6	12	10	18	15
4 th	5	4	7	6	3	3	8	7
5 th	3	3	3	3	2	2	3	3
6 th	3	3	0	.	1	1	1	1
7 th	0	.	0	.	1	1	1	1
8 th	1	1	0	.	0	.	0	.
9 th	1	1	0	.	0	.	1	1
10 th	0	.	0	.	0	.	0	.
11 th	0	.	0	.	0	.	0	.
12 th	0	.	0	.	0	.	0	.
13 th	0	.	0	.	0	.	0	.
14 th	0	.	0	.	0	.	0	.
15 th	0	.	0	.	0	.	0	.
16 th	0	.	0	.	0	.	0	.
17 th	1	1	0	.	0	.	0	.

Note: Included in the count of multiple admissions are those admitted to Secure Detention (Sec. Det.), Level III Residential (L. IIIR), Level IV, Level V, and Division of Family Services and Child Mental Health programs that provide residential services which are classified by DSCYF as crisis bed; mental health; residential group care; treatment center; residential Interagency Collaborative Team; residential treatment, mental health; and residential treatment, substance abuse.

Reading this table: This table shows that 48 percent of youth admitted to the Stevenson House during the third quarter of 2006 had prior admissions to secure detention, 33 percent to Level V, 33 percent to Level IV, and 55 percent to Level IIIR. Twenty-six the 52 youth without prior detention admissions had prior admissions to Levels IIIR, IV and/or V.

Leading Charge at Admission, Third Quarter 2006.

<u>Detained felonies and misdemeanors, 10 Del.C. § 1007(a)(2)</u>	
Assault in the second degree	2
Assault in the third degree	1
Burglary in the second degree	3
Burglary in the second degree, attempted	1
Burglary in the third degree	6
Burglary in the third degree, attempted	2
Carrying a concealed deadly weapon	2
Criminal mischief, class G felony	1
Kidnapping in the second degree	1
Maintaining a vehicle for keeping controlled substance	1
Murder in the first degree	1
Murder in the first degree, attempted	1
Possession of a deadly weapon during the commission of a felony	5
Possession of a firearm during the commission of a felony	1
Possession of burglary tools	1
Possession with intent to deliver narcotics	2
Possession with intent to deliver non-narcotics	2
Rape in the second degree	4
Receiving stolen property, felony	2
Reckless endangering in the first degree	2
Riot	2
Robbery in the first degree	3
Robbery in the first degree, attempted	4
Theft, felony	2
Unlawful sexual contact in the second degree	1
Subtotal	53
<u>Failure to appear, 10 Del.C. § 1007(a)(3)</u>	
Failure to appear in court	11
Subtotal	11

Leading Charge at Admission, Third Quarter 2006.

Detained admissions not pursuant to 10 Del.C. § 1007	
Civil contempt, juvenile fails to pay fines	1
Criminal contempt	2
Criminal impersonation	1
Disorderly conduct	3
Malicious obstruction of emergency calls	1
Menacing	1
Offensive touching	1
Possession of drug paraphernalia	2
Resisting arrest	1
Terroristic threatening, misdemeanor	1
Unauthorized use of a motor vehicle	1
Subtotal	15
Administrative violations and holds	
Administrative hold	1
Administrative hold, Aftercare revocation	4
Administrative hold, internal transfer	3
Subtotal	8
Violation of probation pursuant to 11 Del.C. § 4334	
Violation of probation	4
Subtotal	4

Leading Charge at Admission, Third Quarter 2006.

<u>Sentenced admissions pursuant to an adjudication</u>	
Burglary in the second degree	2
Burglary in the third degree	3
Careless or inattentive driving	1
Criminal mischief, unclassified misdemeanor	1
Disorderly conduct	1
Drug Court violation	1
Possession of a deadly weapon during the commission of a felony	1
Possession of drug paraphernalia	2
Theft, misdemeanor	1
Unlawful sexual contact in the third degree	1
Violation of probation	14
Subtotal	28
Total	119

Crime Category at Admission, Third Quarter 2006.

<u>Category</u>	<u>Number</u>	<u>Percent</u>
Violent felony	38	32
Violent misdemeanor	3	3
Non-violent felony	20	17
Non-violent misdemeanor	29	24
Traffic misdemeanor	1	1
Unclassified misdemeanor	1	1
Drug Court violation	1	1
Probation violation	18	15
Administrative hold/Aftercare revocation	8	7
Total	119	100

While 18 youth were admitted solely for a violation of probation (VOP), another 11 had a VOP and an arrest for another crime. A total of 29 youth were charged with VOP.

Length of Stay on September 30, 2006.

LOS in intervals	<u>Youth</u>	<u>Length of Stay</u>		
	Number	Average	Median	Maximum
1 to 3 days	1	3	3	3
4 to 14 days	12	7	7	11
15 to 29 days	6	19	19	23
30 to 59 days	10	46	45	56
60 to 119 days	14	75	74	104
120 to 179 days	4	142	139	162
180 plus days	3	205	205	213
Summary	50	58	49	213

Legal Status by Average LOS at Snapshot on September 30, 2006.

	<u>Detained</u>		<u>Sentenced</u>		<u>Total</u>	
	No.	LOS	No.	LOS	No.	LOS
Family Court	31	32	8	63	39	38
30 days or less	18	11	1	6	19	10
31 days or more	13	60	7	71	20	64
Superior Court	11	128	0	.	11	128
120 days or less	5	71	0	.	5	71
121 days or more	6	176	0	.	6	176
Total	42	57	8	63	50	58

Youth's Involvement on September 30, 2006.

Detained	Number	LOS in days
Aftercare	7	55
Child Mental Health	0	.
Division of Family Services	1	7
Serious Juvenile Offender and Comprehensive Aftercare Program	12	66
Family Court detainees	31	32
Superior Court detainees	11	128
<hr/>		
Sentenced		
Family Court	8	63

Population Demographics on September 30, 2006.

Race/ethnicity and age	Gender		Total	
	Female	Male	Number	Percent
African American				
12	0	2	2	4
13	0	1	1	2
14	1	3	4	8
15	1	5	6	12
16	1	2	3	6
17	3	11	14	28
18	0	2	2	4
Subtotal	6	26	32	64
Hispanic				
16	0	1	1	2
Subtotal	0	1	1	2
White				
15	0	2	2	4
16	0	5	5	10
17	2	8	10	20
Subtotal	2	15	17	34
Total	8	42	50	100

Third Quarter 2006 Releases.

To whom released/program	Number	Percent	LOS in days	
			Mean	Max.
Releases to the community				
Community Services, Abraxas IIIA, Intensive Home Services	1	1	9	9
Community Services, Abraxas, Electronic Monitoring	5	4	14	57
Community Services, Camelot, Non-secure Detention	5	4	2	3
Community Services, Peoples Place, Non-secure Detention	7	6	4	15
Community Services, Probation	2	2	27	51
Community Services, Providence Service Corporation	1	1	3	3
Division of Family Services	5	4	35	61
Parent	27	23	17	131
Relative	2	2	39	41
Subtotal	55	48	16	131
Releases to a secure placement				
Community Services, Chamberlain Academy High Impact	4	3	58	95
Community Services, Clarinda Academy	1	1	30	30
Community Services, Cove PREP	1	1	15	15
Community Services, Glen Mills Schools	3	3	34	38
Community Services, Mountain Manor Treatment Center	3	3	19	40
Community Services, Palmetto Point Program	1	1	198	198
Community Services, Springfield Academy	1	1	70	70
Community Services, Summit Academy	3	3	24	35
Community Services, Today, Inc., Short Term Drug Abuse	1	1	18	18
Community Services, VisionQuest Boot Camp	10	9	48	98
Community Services, VisionQuest Madalyn	1	1	105	105
Community Services, VisionQuest Quest	2	2	36	51
Community Services, Youth Services Agency	2	2	13	16
Department Of Correction, YCOP	1	1	38	38
Diversified Treatment Alternatives	2	2	94	185
YRS, Ferris School For Boys	9	8	43	88
YRS, Grace Cottage	4	3	26	80
YRS, New Castle County Detention Center	3	3	59	94
YRS, Snowden Cottage	8	7	19	45
Subtotal	60	52	42	198
Total	115	100	30	198

Legal Status by Average LOS at Release, Third Quarter 2006.

	<u>Detained</u>		<u>Sentenced</u>		<u>Total</u>	
	No.	LOS	No.	LOS	No.	LOS
Family Court	43	15	69	37	112	29
30 days or less	36	6	40	13	76	10
31 days or more	7	64	29	70	36	69
Superior Court	2	32	1	121	3	61
120 days or less	2	32	0	.	2	32
121 days or more	0	.	1	121	1	121
Total	45	16	70	39	115	30

Crime Category at Release, Third Quarter 2006.

Category	Number	Percent	<u>LOS in days</u>	
			Mean	Maximum
Violent felony	33	29	43	198
Violent misdemeanor	10	9	21	80
Non-violent felony	17	15	24	98
Non-violent misdemeanor	27	23	30	105
Traffic misdemeanor	1	1	9	9
Unclassified misdemeanor	1	1	1	1
Drug Court violation	1	1	3	3
Probation violation	22	19	24	80
Administrative hold/Aftercare revocation	3	3	11	23
Total	115	100	30	198