



**STATE OF DELAWARE
EXECUTIVE DEPARTMENT
OFFICE OF MANAGEMENT AND BUDGET**

To: John Frazer
From: Jorge Rodríguez-Labarca
Date: August 9, 2006
Subject: Second Quarter 2006 Stevenson House Status Report

On June 30, 2006, the Stevenson House was at 84 percent of capacity with a population of 46 and a rated capacity of 55 beds.

Admissions: There were 145 admissions to the Stevenson House during the second quarter of 2006.

Admission demographics: Of the 145 admissions, 39 were females and 106 were males. During the second quarter 79 African Americans, 63 whites, and three Hispanics were admitted to the Stevenson House.

Leading charges at admission: The most frequent leading charges at admission for the second quarter were violation of probation, 23; failure to appear in court, 13; and, Aftercare revocation, 10. 35 youth, or 24 percent, were admitted to the Stevenson House for violent felonies.

Length of stay: On June 30, there were 46 youth at the Stevenson House with an average length of stay (LOS) of 38 days and a maximum LOS of 168 days.

Of the 46 youth, there were 41 Family Court youth with an average LOS of 32 days and five Superior Court youth with an average LOS of 86 days.

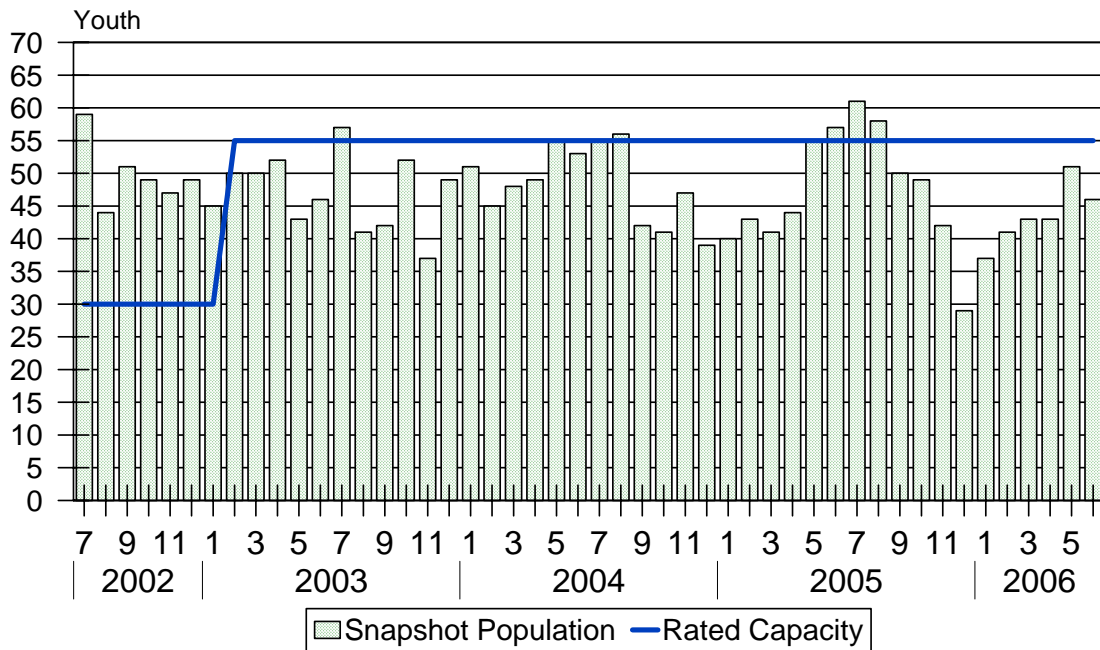
Snapshot demographics: Of the 46 youth, ten were female and 36 were male while there were 30 African Americans, 14 whites, and two Hispanics.

Youth's status: On June 30, there were 33 detained and 13 adjudicated youth.

Releases: 140 youth were released during the second quarter of 2006 with an average LOS of 34 days, and a maximum of 315 days.

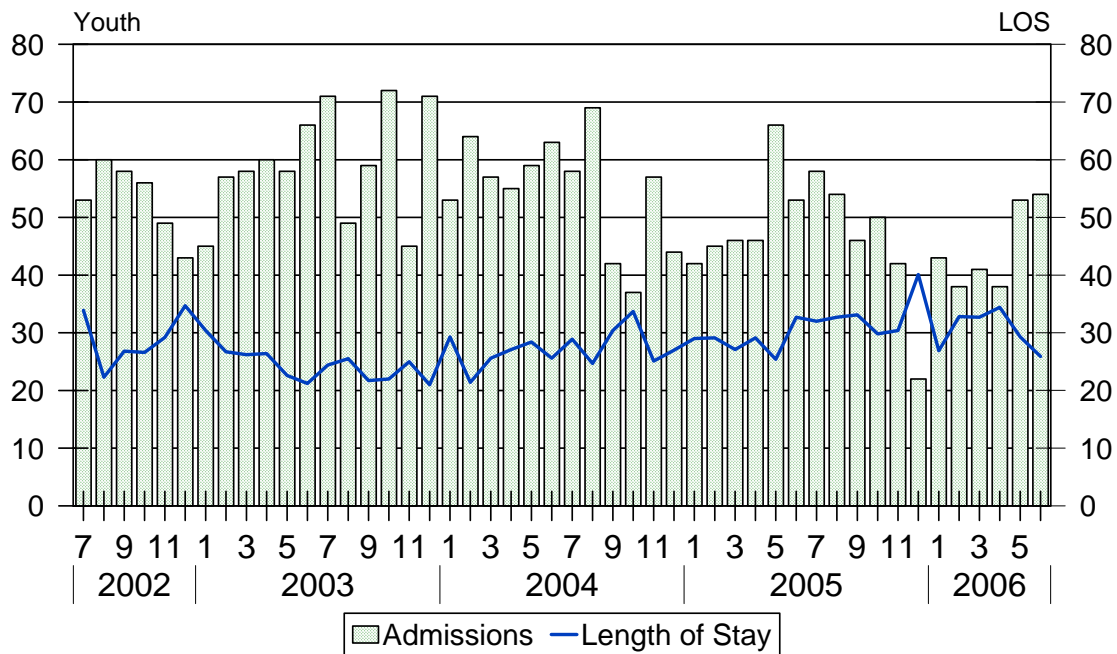


Stevenson House Snapshot Population and Rated Capacity



Snapshot populations are taken at the end of any given month.

Stevenson House Admissions and Time at Stevenson House



Length of Stay: Average length of stay in days at the Stevenson House given monthly admissions and populations.

Admissions, Second Quarter 2006.

| Month | Number | Percent |
|-------|--------|---------|
| April | 38 | 26 |
| May | 53 | 37 |
| June | 54 | 37 |
| Total | 145 | 100 |

Admission Demographics, Second Quarter 2006.

| Race/ethnicity and age | Gender | | Total | |
|------------------------|--------|------|--------|---------|
| | Female | Male | Number | Percent |
| African American | | | | |
| 11 | 0 | 1 | 1 | 1 |
| 12 | 0 | 1 | 1 | 1 |
| 13 | 1 | 4 | 5 | 3 |
| 14 | 4 | 5 | 9 | 6 |
| 15 | 3 | 10 | 13 | 9 |
| 16 | 7 | 15 | 22 | 15 |
| 17 | 4 | 23 | 27 | 19 |
| 18 | 0 | 1 | 1 | 1 |
| Subtotal | 19 | 60 | 79 | 54 |
| Hispanic | | | | |
| 15 | 0 | 1 | 1 | 1 |
| 16 | 1 | 1 | 2 | 0 |
| Subtotal | 1 | 2 | 3 | 2 |
| White | | | | |
| 13 | 1 | 1 | 2 | 1 |
| 14 | 5 | 4 | 9 | 6 |
| 15 | 4 | 7 | 11 | 8 |
| 16 | 1 | 12 | 13 | 9 |
| 17 | 8 | 20 | 28 | 19 |
| Subtotal | 19 | 44 | 63 | 43 |
| Total | 39 | 106 | 145 | 100 |

**Admissions Profile for
Second Quarter 2006 Stevenson House Admittees.**

| Admissions | Youth | | | Admissions | | |
|---------------------|--------|---------|--------|------------|---------|--------|
| | Number | Percent | Cum. % | Number | Percent | Cum. % |
| Total | 145 | 100% | 100% | 553 | 100% | 100% |
| First admission | 61 | 42% | 42% | 61 | 11% | 11% |
| Multiple admissions | 84 | 58% | 58% | 492 | 89% | 89% |
| 2 nd | 20 | 14% | 56% | 40 | 7% | 18% |
| 3 rd | 8 | 6% | 61% | 24 | 4% | 23% |
| 4 th | 15 | 10% | 72% | 60 | 11% | 33% |
| 5 th | 9 | 6% | 78% | 45 | 8% | 42% |
| 6 th | 7 | 5% | 83% | 42 | 8% | 49% |
| 7 th | 3 | 2% | 85% | 21 | 4% | 53% |
| 8 th | 5 | 3% | 88% | 40 | 7% | 60% |
| 9 th | 3 | 2% | 90% | 27 | 5% | 65% |
| 10 th | 3 | 2% | 92% | 30 | 5% | 71% |
| 11 th | 2 | 1% | 94% | 22 | 4% | 75% |
| 12 th | 2 | 1% | 95% | 24 | 4% | 79% |
| 13 th | 2 | 1% | 97% | 26 | 5% | 84% |
| 14 th | 0 | . | 97% | 0 | . | 84% |
| 15 th | 2 | 1% | 98% | 30 | 5% | 89% |
| 16 th | 1 | 1% | 99% | 16 | 3% | 92% |
| 17 th | 0 | . | 99% | 0 | . | 92% |
| 18 th | 0 | . | 99% | 0 | . | 92% |
| 19 th | 1 | 1% | 99% | 19 | 3% | 95% |
| 20 th | 0 | . | 99% | 0 | . | 95% |
| 21 st | 0 | . | 99% | 0 | . | 95% |
| 22 nd | 0 | . | 99% | 0 | . | 95% |
| 23 rd | 0 | . | 99% | 0 | . | 95% |
| 24 th | 0 | . | 99% | 0 | . | 95% |
| 25 th | 0 | . | 99% | 0 | . | 95% |
| 26 th | 1 | 1% | 100% | 26 | 5% | 100% |

Note: First admission means that, heretofore, a juvenile had never been admitted to Secure Detention, Level III Residential, Level IV, Level V, nor Division of Family Services (DFS) and Child Mental Health (CMH) programs that provide residential services. Included in the count of multiple admissions are those admitted to Secure Detention, Level III Residential, Level IV, Level V, and DFS and CMH programs that provide residential services which are classified by DSCYF as crisis bed; mental health; residential group care; treatment center; residential Interagency Collaborative Team; residential treatment, mental health; and residential treatment, substance abuse.

**Admission Profile by Dispositional
Level for Second Quarter 2006 Stevenson House Admittees.**

| Admissions | Number and percent of youth | | | | | | | |
|---------------------|-----------------------------|-----|------|-----|-------|-----|---------|-----|
| | Sec. Det. | | L. V | | L. IV | | L. IIIR | |
| | N. | % | N. | % | N. | % | N. | % |
| Total | 145 | 100 | 145 | 100 | 145 | 100 | 145 | 100 |
| No prior admissions | 73 | 50 | 93 | 64 | 96 | 66 | 70 | 48 |
| Multiple admissions | 72 | 50 | 52 | 36 | 49 | 34 | 75 | 52 |
| 2 nd | 38 | 26 | 25 | 17 | 23 | 16 | 31 | 21 |
| 3 rd | 10 | 7 | 11 | 8 | 16 | 11 | 29 | 20 |
| 4 th | 10 | 7 | 12 | 8 | 4 | 3 | 10 | 7 |
| 5 th | 6 | 4 | 3 | 2 | 1 | 1 | 3 | 2 |
| 6 th | 3 | 2 | 0 | . | 3 | 2 | 1 | 1 |
| 7 th | 2 | 1 | 1 | 1 | 2 | 1 | 1 | 1 |
| 8 th | 0 | . | 0 | . | 0 | . | 0 | . |
| 9 th | 2 | 1 | 0 | . | 0 | . | 0 | . |
| 10 th | 1 | 1 | 0 | . | 0 | . | 0 | . |

Note: Included in the count of multiple admissions are those admitted to Secure Detention (Sec. Det.), Level III Residential (L. IIIR), Level IV, Level V, and Division of Family Services and Child Mental Health programs that provide residential services which are classified by DSCYF as crisis bed; mental health; residential group care; treatment center; residential Interagency Collaborative Team; residential treatment, mental health; and residential treatment, substance abuse.

Reading this table: This table shows that 50 percent of youth admitted to the Stevenson House during the second quarter of 2006 had prior admissions to secure detention, 36 percent to Level V, 34 percent to Level IV, and 52 percent to Level IIIR. Twenty-four of the 73 youth without prior detention admissions had prior admissions to Levels IIIR, IV and/or V.

Leading Charge at Admission, Second Quarter 2006.

| <u>Detained felonies and misdemeanors, 10 Del.C. § 1007(a)(2)</u> | |
|--|-----------|
| Assault in the first degree | 1 |
| Assault in the third degree | 2 |
| Burglary in the second degree | 4 |
| Burglary in the third degree | 5 |
| Distribution of a controlled substance within 1,000 feet of a school | 1 |
| Identity theft where the victim is 62 years or older | 1 |
| Menacing, aggravated | 1 |
| Murder in the first degree | 1 |
| Possession of a deadly weapon by a person prohibited, firearm | 1 |
| Possession of a deadly weapon during the commission of a felony | 7 |
| Possession of a firearm during the commission of a felony | 3 |
| Possession of burglary tools | 2 |
| Possession with intent to deliver narcotics | 1 |
| Possession with intent to deliver non-narcotics | 3 |
| Rape in the first degree | 1 |
| Rape in the second degree | 1 |
| Robbery in the first degree | 3 |
| Robbery in the second degree | 2 |
| Tampering with a witness | 2 |
| Theft, felony | 1 |
| Unlawful sexual contact in the second degree | 3 |
| Unlawful use of a credit card, felony | 2 |
| Subtotal | 48 |
| <u>Failure to appear, 10 Del.C. § 1007(a)(3)</u> | |
| Failure to appear in court | 13 |
| Subtotal | 13 |

Leading Charge at Admission, Second Quarter 2006.

| | |
|---|-----------|
| <u>Detained admissions not pursuant to 10 Del.C. § 1007</u> | |
| Breach of conditions of release, misdemeanor | 1 |
| Civil contempt, juvenile fails to pay fines | 1 |
| Conspiracy in the third degree | 1 |
| Criminal contempt | 1 |
| Criminal impersonation | 1 |
| Criminal mischief, unclassified misdemeanor | 2 |
| Criminal trespassing in the second degree | 1 |
| Disorderly conduct | 2 |
| Escape in the third degree | 1 |
| Offensive touching | 1 |
| Possession of drug paraphernalia | 1 |
| Possession or use of a non-narcotic | 1 |
| Reckless burning or exploding | 1 |
| Reckless endangering in the second degree | 1 |
| Resisting arrest | 1 |
| Terroristic threatening, misdemeanor | 1 |
| Theft, misdemeanor | 1 |
| Unauthorized use of a motor vehicle | 1 |
| Unlawful imprisonment in the second degree | 1 |
| <u>Subtotal</u> | <u>21</u> |
| <u>Administrative violations and holds</u> | |
| Administrative hold | 8 |
| Administrative hold, Aftercare revocation | 10 |
| Administrative hold, internal transfer | 4 |
| <u>Subtotal</u> | <u>22</u> |
| <u>Violation of probation pursuant to 11 Del.C. § 4334</u> | |
| Violation of probation | 4 |
| <u>Subtotal</u> | <u>4</u> |

Leading Charge at Admission, Second Quarter 2006.

| <u>Sentenced admissions pursuant to an adjudication</u> | |
|---|------------|
| Assault in the second degree | 1 |
| Assault in the third degree | 2 |
| Burglary in the second degree | 1 |
| Criminal contempt | 2 |
| Criminal trespassing in the second degree | 1 |
| Drug Court violation | 2 |
| Offensive touching | 1 |
| Possession of a firearm during the commission of a felony | 1 |
| Possession of a weapon in a safe school zone | 1 |
| Possession of drug paraphernalia | 1 |
| Possession or use of a non-narcotic | 1 |
| Terroristic threatening, misdemeanor | 2 |
| Theft, misdemeanor | 1 |
| Underage possession or consumption of alcohol | 1 |
| Violation of probation | 19 |
| Subtotal | 37 |
| Total | 145 |

Crime Category at Admission, Second Quarter 2006.

| <u>Category</u> | <u>Number</u> | <u>Percent</u> |
|--|---------------|----------------|
| Violent felony | 35 | 24 |
| Violent misdemeanor | 10 | 7 |
| Non-violent felony | 15 | 10 |
| Non-violent misdemeanor | 36 | 25 |
| Unclassified misdemeanor | 2 | 1 |
| Drug Court violation | 2 | 1 |
| Probation violation | 23 | 16 |
| Administrative hold/Aftercare revocation | 22 | 15 |
| Total | 145 | 100 |

While 23 youth were admitted solely for a violation of probation (VOP), another eight had a VOP and an arrest for another crime. A total of 31 youth were charged with VOP.

Length of Stay on June 30, 2006.

| LOS in intervals | <u>Youth</u> | <u>Length of Stay</u> | | |
|------------------|--------------|-----------------------|--------|---------|
| | Number | Average | Median | Maximum |
| 1 to 3 days | 8 | 2 | 3 | 3 |
| 4 to 14 days | 10 | 10 | 10 | 12 |
| 15 to 29 days | 10 | 21 | 20 | 29 |
| 30 to 59 days | 6 | 43 | 37 | 59 |
| 60 to 119 days | 10 | 86 | 74 | 113 |
| 120 to 179 days | 2 | 145 | 145 | 168 |
| 180 plus days | 0 | . | . | . |
| Summary | 46 | 38 | 20 | 168 |

Legal Status by Average LOS at Snapshot on June 30, 2006.

| | <u>Detained</u> | | <u>Sentenced</u> | | <u>Total</u> | |
|------------------|-----------------|-----|------------------|-----|--------------|-----|
| | No. | LOS | No. | LOS | No. | LOS |
| Family Court | 28 | 30 | 13 | 36 | 41 | 32 |
| 30 days or less | 20 | 14 | 8 | 7 | 28 | 12 |
| 31 days or more | 8 | 70 | 5 | 83 | 13 | 75 |
| Superior Court | 5 | 86 | 0 | . | 5 | 86 |
| 120 days or less | 4 | 77 | 0 | . | 4 | 77 |
| 121 days or more | 1 | 121 | 0 | . | 1 | 121 |
| Total | 33 | 38 | 13 | 36 | 46 | 38 |

Youth's Involvement on June 30, 2006.

| Detained | Number | LOS in days |
|---|--------|-------------|
| Aftercare | 6 | 40 |
| Child Mental Health | 3 | 18 |
| Division of Family Services | 1 | 29 |
| Serious Juvenile Offender and Comprehensive Aftercare Program | 9 | 48 |
| Family Court detainees | 28 | 30 |
| Superior Court detainees | 5 | 86 |
| Sentenced | | |
| Family Court | 13 | 36 |

Population Demographics on June 30, 2006.

| Race/ethnicity and age | Gender | | Total | |
|------------------------|--------|------|--------|---------|
| | Female | Male | Number | Percent |
| African American | | | | |
| 13 | 0 | 1 | 1 | 2 |
| 14 | 0 | 3 | 3 | 7 |
| 15 | 2 | 5 | 7 | 15 |
| 16 | 2 | 6 | 8 | 17 |
| 17 | 0 | 10 | 10 | 22 |
| 18 | 0 | 1 | 1 | 2 |
| Subtotal | 4 | 26 | 30 | 65 |
| Hispanic | | | | |
| 16 | 1 | 1 | 2 | 4 |
| Subtotal | 1 | 1 | 2 | 4 |
| White | | | | |
| 13 | 0 | 1 | 1 | 2 |
| 14 | 1 | 0 | 1 | 2 |
| 15 | 1 | 1 | 2 | 4 |
| 16 | 0 | 1 | 1 | 2 |
| 17 | 3 | 6 | 9 | 20 |
| Subtotal | 5 | 9 | 14 | 30 |
| Total | 10 | 36 | 46 | 100 |

Second Quarter 2006 Releases.

| To whom released/program | Number | Percent | LOS in days | |
|---|------------|------------|-------------|------------|
| | | | Mean | Max. |
| Releases to the community | | | | |
| Community Services, Abraxas IIIA, Intensive Home Services | 1 | 1 | 16 | 16 |
| Community Services, Camelot Non-secure Detention | 3 | 2 | 7 | 15 |
| Community Services, Peoples Place, Non-secure Detention | 7 | 5 | 9 | 19 |
| Community Services, Providence Service Corporation | 2 | 1 | 4 | 6 |
| Community Services, VisionQuest Community Based | 2 | 1 | 55 | 105 |
| Division of Family Services | 2 | 1 | 2 | 2 |
| Guardian | 1 | 1 | 4 | 4 |
| Parent | 41 | 29 | 24 | 315 |
| Relative | 4 | 3 | 7 | 12 |
| Subtotal | 63 | 45 | 20 | 315 |
| Releases to a secure placement | | | | |
| CMH, Riverside Treatment Services, Inc. | 1 | 1 | 48 | 48 |
| Community Services, Abraxas Drug Seller | 3 | 2 | 3 | 6 |
| Community Services, Chamberlain Academy General | 2 | 1 | 43 | 43 |
| Community Services, Chamberlain Academy High Impact | 3 | 2 | 84 | 104 |
| Community Services, Hennepin County Home School | 1 | 1 | 259 | 259 |
| Community Services, Mountain Manor Treatment Center | 4 | 3 | 20 | 29 |
| Community Services, New Choices | 1 | 1 | 56 | 56 |
| Community Services, Southwest Indiana | 3 | 2 | 77 | 111 |
| Community Services, Springfield Academy | 2 | 1 | 47 | 71 |
| Community Services, Summit Academy | 6 | 4 | 39 | 93 |
| Community Services, Today, Inc., Short Term Drug Abuse | 3 | 2 | 20 | 23 |
| Community Services, VisionQuest Boot Camp | 9 | 6 | 34 | 80 |
| Community Services, VisionQuest Madalyn | 4 | 3 | 43 | 57 |
| Community Services, Youth Services Agency | 4 | 3 | 17 | 24 |
| Department of Correction, YCOP | 1 | 1 | 228 | 228 |
| Ohio authorities | 1 | 1 | 30 | 30 |
| YRS, Ferris School For Boys | 8 | 6 | 33 | 71 |
| YRS, Grace Cottage | 8 | 6 | 33 | 207 |
| YRS, New Castle County Detention Center | 5 | 4 | 87 | 252 |
| YRS, Snowden Cottage | 8 | 6 | 36 | 104 |
| Subtotal | 77 | 55 | 45 | 259 |
| Total | 140 | 100 | 34 | 315 |

Legal Status by Average LOS at Release, Second Quarter 2006.

| | <u>Detained</u> | | <u>Sentenced</u> | | <u>Total</u> | |
|------------------|-----------------|-----|------------------|-----|--------------|-----|
| | No. | LOS | No. | LOS | No. | LOS |
| Family Court | 69 | 22 | 69 | 38 | 138 | 30 |
| 30 days or less | 61 | 8 | 41 | 17 | 102 | 11 |
| 31 days or more | 8 | 133 | 28 | 69 | 36 | 83 |
| Superior Court | 0 | . | 2 | 272 | 2 | 272 |
| 120 days or less | 0 | . | 0 | . | 0 | . |
| 121 days or more | 0 | . | 2 | 272 | 2 | 272 |
| Total | 69 | 22 | 71 | 45 | 140 | 34 |

Crime Category at Release, Second Quarter 2006.

| Category | Number | Percent | <u>LOS in days</u> | |
|--|--------|---------|--------------------|---------|
| | | | Mean | Maximum |
| Violent felony | 33 | 24 | 63 | 315 |
| Violent misdemeanor | 11 | 8 | 19 | 105 |
| Non-violent felony | 16 | 11 | 29 | 207 |
| Non-violent misdemeanor | 36 | 26 | 24 | 104 |
| Unclassified misdemeanor | 2 | 1 | 13 | 24 |
| Unclassified violation | 1 | 1 | 16 | 16 |
| Drug Court violation | 2 | 1 | 14 | 24 |
| Probation violation | 27 | 19 | 32 | 93 |
| Administrative hold/Aftercare revocation | 12 | 9 | 13 | 48 |
| Total | 140 | 100 | 34 | 315 |