



**STATE OF DELAWARE
EXECUTIVE DEPARTMENT
OFFICE OF MANAGEMENT AND BUDGET**

To: John Frazer
From: Jorge Rodríguez-Labarca
Date: May 10, 2006
Subject: First Quarter 2006 Stevenson House Status Report

On March 31, 2006, the Stevenson House was at 78 percent of capacity with a population of 43 and a rated capacity of 55 beds.

Admissions: There were 122 admissions to the Stevenson House during the first quarter of 2006.

Admission demographics: Of the 122 admissions, 15 were females and 107 were males. During the first quarter 72 African American, 48 whites, and two Hispanics were admitted to the Stevenson House.

Leading charges at admission: The most frequent leading charges at admission for the first quarter were: burglary in the second degree and violation of probation, 11; and, burglary in the third degree, 10. 42 youth, or 34 percent, were admitted to the Stevenson House for violent felonies.

Length of stay: On March 31, there were 43 youth at the Stevenson House with an average length of stay (LOS) of 53 days and a maximum LOS of 246 days.

Of the 43 youth, there were 38 Family Court youth with an average LOS of 41 days and five Superior Court youth with an average LOS of 145 days.

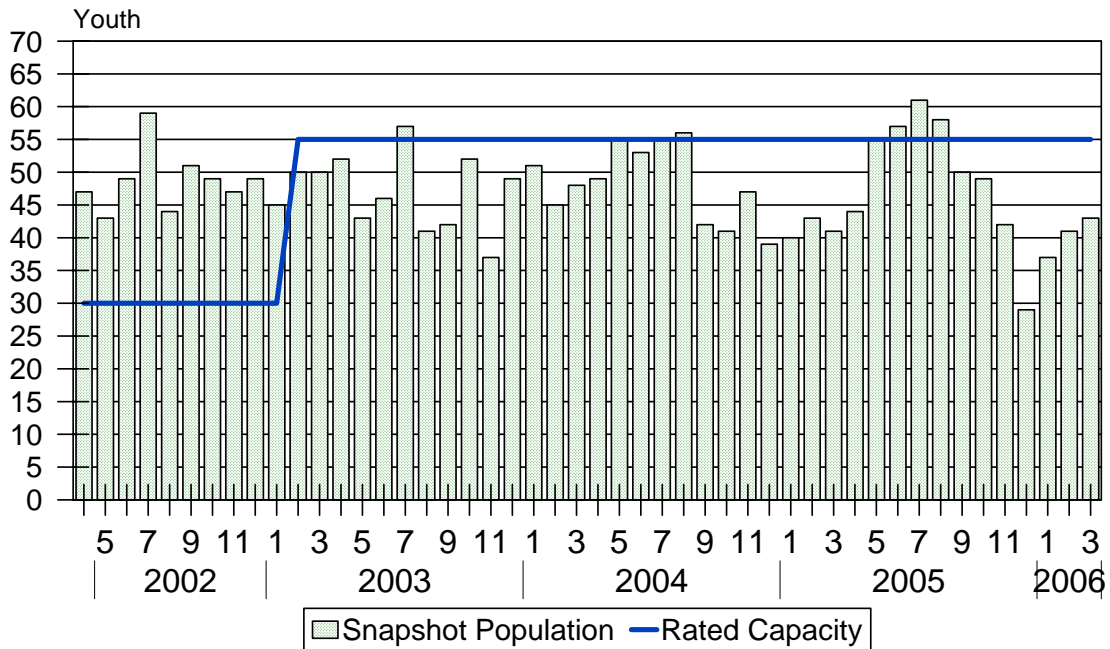
Snapshot demographics: Of the 43 youth, five were female and 38 were male while 33 were African Americans, 10 were white, and one was Hispanic.

Youth's status: On March 31, there were 31 detained and 12 adjudicated youth.

Releases: 109 youth were released during the first quarter of 2006 with an average LOS of 35 days, and a maximum of 415 days.

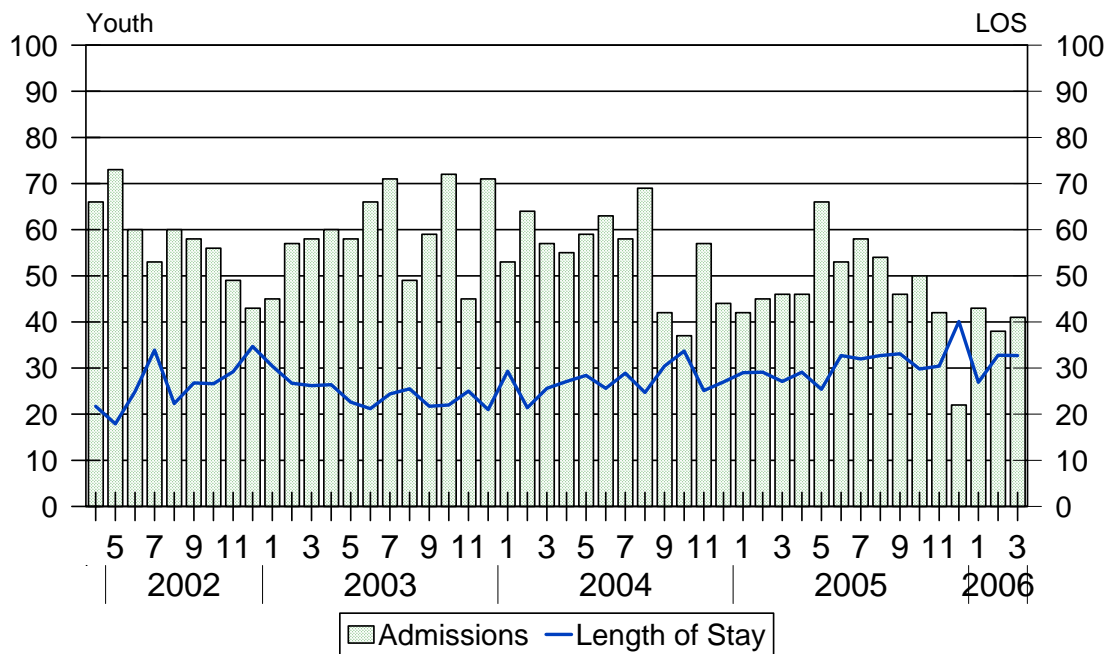


Stevenson House Snapshot Population and Rated Capacity



Snapshot populations are taken at the end of any given month.

Stevenson House Admissions and Time at Stevenson House



Length of Stay: Average length of stay in days at the Stevenson House given monthly admissions and populations.

Admissions, First Quarter 2006.

Month	Number	Percent
January	43	35
February	38	31
March	41	34
Total	122	100

Admission Demographics, First Quarter 2006.

Race/ethnicity and age	Gender		Total	
	Female	Male	Number	Percent
African American				
11	0	3	3	2
13	0	6	6	5
14	2	7	9	7
15	5	14	19	16
16	3	19	22	18
17	1	12	13	11
Subtotal	11	61	72	59
Hispanic				
16	0	2	2	2
Subtotal	0	2	2	2
White				
12	0	1	1	1
13	1	0	1	1
14	0	4	4	3
15	1	4	5	4
16	1	18	19	16
17	1	16	17	14
17	0	1	1	1
Subtotal	4	44	48	39
Total	15	107	122	100

Admissions Profile for First Quarter 2006 Stevenson House Admittees.

Admissions	Youth			Admissions		
	Number	Percent	Cum. %	Number	Percent	Cum. %
Total	122	100%	100%	528	100%	100%
First admission	36	30%	30%	36	7%	7%
Multiple admissions	86	70%	70%	492	93%	93%
2 nd	20	16%	46%	40	8%	14%
3 rd	14	11%	57%	42	8%	22%
4 th	8	7%	64%	32	6%	28%
5 th	6	5%	69%	30	6%	34%
6 th	6	5%	74%	36	7%	41%
7 th	9	7%	81%	63	12%	53%
8 th	5	4%	85%	40	8%	60%
9 th	5	4%	89%	45	9%	69%
10 th	4	3%	93%	40	8%	77%
11 th	4	3%	96%	44	8%	85%
12 th	2	2%	98%	24	5%	89%
13 th	1	1%	98%	13	2%	92%
14 th	0	.	98%	0	.	92%
15 th	0	.	98%	0	.	92%
16 th	0	.	98%	0	.	92%
17 th	1	1%	99%	17	3%	95%
18 th	0	.	99%	0	.	95%
19 th	0	.	99%	0	.	95%
20 th	0	.	99%	0	.	95%
21 st	0	.	99%	0	.	95%
22 nd	0	.	99%	0	.	95%
23 rd	0	.	99%	0	.	95%
24 th	0	.	99%	0	.	95%
25 th	0	.	99%	0	.	95%
26 th	1	1%	100%	26	5%	100%

Note: First admission means that, heretofore, a juvenile had never been admitted to Secure Detention, Level III Residential, Level IV, Level V, nor Division of Family Services (DFS) and Child Mental Health (CMH) programs that provide residential services. Included in the count of multiple admissions are those admitted to Secure Detention, Level III Residential, Level IV, Level V, and DFS and CMH programs that provide residential services which are classified by DSCYF as crisis bed; mental health; residential group care; treatment center; residential Interagency Collaborative Team; residential treatment, mental health; and residential treatment, substance abuse.

**Admission Profile by Dispositional
Level for First Quarter 2006 Stevenson House Admittees.**

Admissions	Number and percent of youth							
	Sec. Det.		L. V		L. IV		L. IIIR	
	N.	%	N.	%	N.	%	N.	%
Total	122	100	122	100	122	100	122	100
No prior admissions	48	39	79	65	75	61	66	54
Multiple admissions	74	61	43	35	47	39	56	46
2 nd	33	27	20	16	27	22	27	22
3 rd	17	14	16	13	14	11	15	12
4 th	4	3	5	4	5	4	10	8
5 th	7	6	1	1	0	0	2	2
6 th	7	6	0	.	1	1	0	.
7 th	3	2	1	1	0	.	0	.
8 th	1	1	0	.	0	.	0	.
9 th	1	1	0	.	0	.	0	.
10 th	0	.	0	.	0	.	2	2
11 th	1	1	0	.	0	.	0	.

Note: Included in the count of multiple admissions are those admitted to Secure Detention (Sec. Det.), Level III Residential (L. IIIR), Level IV, Level V, and Division of Family Services and Child Mental Health programs that provide residential services which are classified by DSCYF as crisis bed; mental health; residential group care; treatment center; residential Interagency Collaborative Team; residential treatment, mental health; and residential treatment, substance abuse.

Reading this table: This table shows that 61 percent of youth admitted to the Stevenson House during the first quarter of 2006 had prior admissions to secure detention, 35 percent to Level V, 39 percent to Level IV, and 46 percent to Level IIIR. Sixteen of the 48 youth without prior detention admissions had prior admissions to Levels IIIR, IV and/or V.

Leading Charge at Admission, First Quarter 2006.

Detained felonies and misdemeanors, 10 Del.C. § 1007(a)(2)	
Assault in the second degree	1
Assault in the third degree	5
Burglary in the second degree	8
Burglary in the third degree	6
Carrying a concealed deadly weapon	1
Possession of a deadly weapon by person prohibited, firearm	1
Possession of deadly weapon during the commission of a felony	6
Possession of a firearm during the commission of a felony	2
Possession of a weapon in a safe school zone	1
Possession of a weapon with a removed serial number	1
Possession of burglar's tools	2
Possession with intent to deliver narcotics	1
Possession with intent to deliver non-narcotics	2
Rape in the first degree	2
Rape in the second degree	2
Rape in the third degree	1
Receiving stolen property, felony	2
Robbery in the first degree	5
Robbery in the second degree	2
Theft, felony	1
Subtotal	52
Failure to appear, 10 Del.C. § 1007(a)(3)	
Capias	7
Failure to appear in court	2
Subtotal	9

Leading Charge at Admission, First Quarter 2006.

Detained admissions not pursuant to 10 Del.C. § 1007

Civil contempt, juvenile fail to pay fines	1
Disorderly conduct	1
Escape in the third degree	1
Offensive touching	2
Possession or use of a non-narcotic	1
Resisting arrest	1
Shoplifting, misdemeanor	1
Terroristic threatening, misdemeanor	2
Theft, misdemeanor	1
Unauthorized use of a motor vehicle	1
<hr/>	
Subtotal	12

Administrative violations and holds

Administrative hold	5
Administrative hold, Aftercare revocation	5
<hr/>	
Subtotal	10

Violation of probation pursuant to 11 Del.C. § 4334

Violation of probation	1
<hr/>	
Subtotal	1

Leading Charge at Admission, First Quarter 2006.

Sentenced admissions pursuant to an adjudication	
Assault in the second degree	1
Burglary in the second degree	3
Burglary in the third degree	4
Disorderly conduct	2
Drug Court violation	1
Offensive touching	1
Possession of a deadly weapon by person prohibited	2
Possession of a deadly weapon during the commission of a felony	1
Possession of a weapon with a removed serial number	1
Possession of drug paraphernalia	1
Possession or use of narcotics	1
Reckless endangering in the first degree	1
Resisting arrest	3
Robbery in the second degree	2
Shoplifting, misdemeanor	3
Theft, misdemeanor	1
Violation of probation	10
Subtotal	38
Total	122

Crime Category at Admission, First Quarter 2006.

Category	Number	Percent
Violent felony	42	34
Violent misdemeanor	8	7
Non-violent felony	20	16
Non-violent misdemeanor	22	18
Unclassified misdemeanor	8	7
Drug Court violation	1	1
Probation violation	11	9
Administrative hold/Aftercare revocation	10	8
Total	122	100

Length of Stay on March 31, 2006.

LOS in intervals	<u>Youth</u>	<u>Length of Stay</u>		
	Number	Average	Median	Maximum
1 to 3 days	5	3	3	3
4 to 14 days	8	10	10	14
15 to 29 days	13	22	22	28
30 to 59 days	8	43	44	54
60 to 119 days	3	71	75	77
120 to 179 days	0	.	.	.
180 plus days	6	226	229	246
Summary	43	53	23	246

Legal Status by Average LOS at Snapshot on March 31, 2006.

	<u>Detained</u>		<u>Sentenced</u>		<u>Total</u>	
	No.	LOS	No.	LOS	No.	LOS
Family Court	26	45	12	33	38	41
30 days or less	16	17	9	11	25	15
31 days or more	10	90	3	99	13	92
Superior Court	5	145	0	.	5	145
120 days or less	2	20	0	.	2	20
121 days or more	3	229	0	.	3	229
Total	31	61	12	33	43	53

Youth's Involvement on March 31, 2006.

Detained	Number	LOS in days
Aftercare	4	25
Child Mental Health	2	33
Division of Family Services	0	.
Probation	1	34
Serious Juvenile Offender and Comprehensive Aftercare Program	8	51
Family Court detainees	26	45
Superior Court detainees	5	145
Sentenced		
Family Court	12	33

Population Demographics on March 31, 2006.

Race/ethnicity and age	Gender		Total	
	Female	Male	Number	Percent
African American				
13	0	4	4	9
14	0	3	3	7
15	4	5	9	21
16	0	11	11	26
17	1	5	6	14
Subtotal	5	28	33	77
Hispanic				
16	0	1	1	2
Subtotal	0	1	1	2
White				
14	0	1	1	2
15	0	2	2	5
16	0	2	2	5
17	0	4	4	9
Subtotal	0	9	9	21
Total	5	38	43	100

First Quarter 2006 Releases.

To whom released/program	Number	Percent	LOS in days	
			Mean	Max.
Releases to the community				
Community Service, Lead, Inc	1	1	1	1
Community Service, Providence Service Corporation	1	1	2	2
Community Service, VisionQuest Community Based Services	1	1	13	13
Community Services, Abraxas IIIA, Intensive Home Services	2	2	15	19
Community Services, Camelot Non-secure Detention	2	2	3	3
Community Services, Peoples Place, Non-secure Det.	6	6	2	4
Division of Family Services	4	4	10	21
Guardian	1	1	4	4
Parent	29	27	18	250
Relative	2	2	101	199
Subtotal	49	45	17	250
Releases to a secure placement				
Community Services, Chamberlain Academy High Impact	3	3	51	100
Community Services, Clarinda Academy	1	1	32	32
Community Services, Diversified Treatment Alternatives	1	1	67	67
Community Services, Glen Mills Schools	1	1	10	10
Community Services, Mountain Manor Treatment Center	3	3	25	28
Community Services, Southwest Indiana, Drug and Alcohol	2	2	55	58
Community Services, Summit Academy	4	4	47	79
Community Services, Today, Inc., Short Term Drug Abuse	1	1	36	36
Community Services, VisionQuest Boot Camp	7	6	30	50
Community Services, VisionQuest Madalyn	2	2	46	79
Community Services, VisionQuest Quest	1	1	50	50
Community Services, Youth Services Agency	5	5	32	46
Department of Correction	2	2	128	148
Department of Correction, YCOP	2	2	368	415
YRS, Ferris School for Boys	12	11	43	189
YRS, Grace Cottage	3	3	25	40
YRS, New Castle County Detention Center	2	2	21	28
YRS, Snowden Cottage	8	7	23	67
Subtotal	60	55	50	415
Total	109	100	35	415

Legal Status by Average LOS at Release, First Quarter 2006.

	<u>Detained</u>		<u>Sentenced</u>		<u>Total</u>	
	No.	LOS	No.	LOS	No.	LOS
Family Court	42	13	61	33	103	25
30 days or less	39	6	37	17	76	12
31 days or more	3	106	24	58	27	63
Superior Court	2	225	4	194	6	204
120 days or less	1	35	1	108	2	72
121 days or more	1	415	3	222	4	271
Total	44	23	65	43	109	35

Crime Category at Release, First Quarter 2006.

Category	Number	Percent	<u>LOS in days</u>	
			Mean	Maximum
Violent felony	39	36	60	415
Violent misdemeanor	11	10	23	79
Non-violent felony	20	18	23	67
Non-violent misdemeanor	20	18	20	51
Unclassified misdemeanor	1	1	2	2
Drug Court violation	1	1	23	23
Probation violations	12	11	23	71
Administrative hold/Aftercare revocation	5	5	14	32
Total	109	100	35	415