



**STATE OF DELAWARE
EXECUTIVE DEPARTMENT
OFFICE OF MANAGEMENT AND BUDGET**

To: John Frazer
From: Jorge Rodríguez-Labarca
Date: January 30, 2006
Subject: Fourth Quarter 2005 Stevenson House Status Report

On December 31, 2005, the Stevenson House was at 53 percent of capacity with a population of 29 and a rated capacity of 55 beds.

Admissions: During the fourth quarter of 2005, there were 114 admissions to the Stevenson House.

Admission demographics: Of the 114 admissions, 27 were females and 87 were males. During the fourth quarter 67 African American, 44 whites, and three Hispanics were admitted to the Stevenson House.

Leading charges at admission: The most frequent leading charges at admission for the fourth quarter were: burglary in the second degree, 12; Aftercare revocation, 8; and, offensive touching and misdemeanor terroristic threatening, 6. 36 youth, or 32 percent, were admitted to the Stevenson House for violent felonies.

Length of stay: On December 31, there were 29 youth at the Stevenson House with an average length of stay (LOS) of 96 days and a maximum LOS of 355 days.

Of the 29 youth, there were 18 Family Court youth with an average LOS of 46 days and 11 Superior Court youth with an average LOS of 178 days.

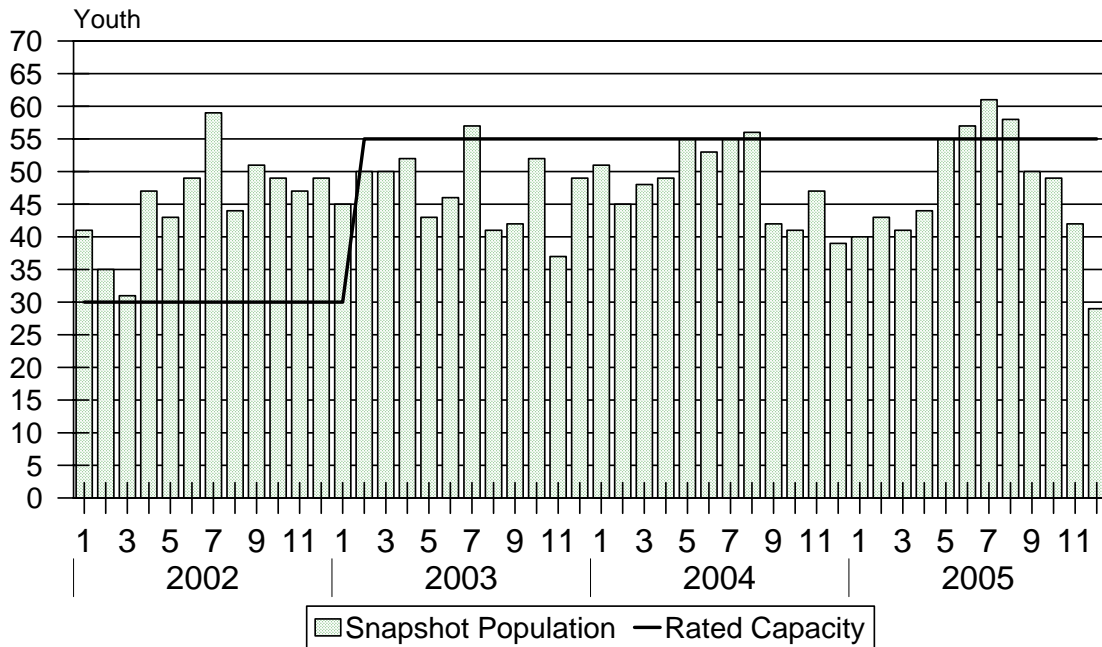
Snapshot demographics: Of the 29 youth, 3 were female and 26 were male while 23 were African Americans and 6 were white.

Youth's status: On December 31, there were 23 detained and 6 adjudicated youth.

Releases: 134 youth were released during the fourth quarter of 2005 with an average LOS of 29 days, and a maximum of 225 days.

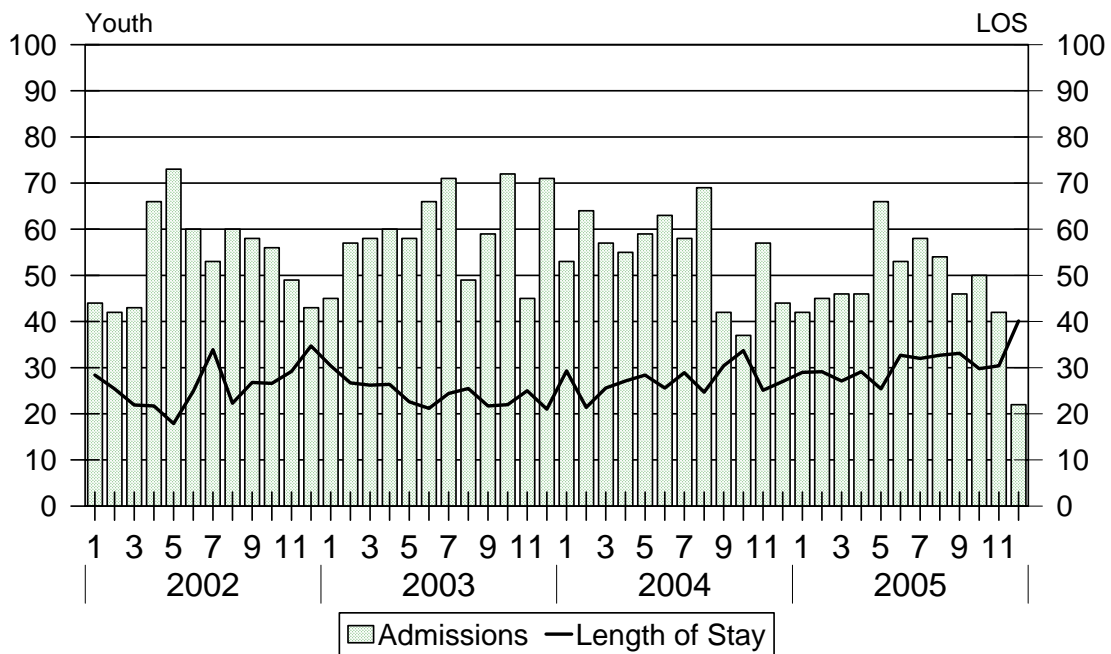


Stevenson House Snapshot Population and Rated Capacity



Snapshot populations are taken at the end of any given month.

Stevenson House Admissions and Time at Stevenson House



Length of Stay: Average length of stay in days at the Stevenson House given monthly admissions and populations.

Admissions, Fourth Quarter 2005.

Month	Number	Percent
October	50	44
November	42	37
December	22	19
Total	114	100

Admission Demographics, Fourth Quarter 2005.

Race/ethnicity and age	Gender		Total	
	Female	Male	Number	Percent
African American				
13	0	5	5	4
14	3	9	12	11
15	4	11	15	13
16	5	12	17	15
17	4	13	17	15
18	0	1	1	1
Subtotal	16	51	67	59
Hispanic				
14	0	1	1	1
16	0	2	2	2
Subtotal	0	3	3	3
White				
13	1	1	2	2
14	1	3	4	4
15	6	7	13	11
16	1	9	10	9
17	2	13	15	13
Subtotal	11	33	44	39
Total	27	87	114	100

**Admissions Profile for
Fourth Quarter 2005 Stevenson House Admittees.**

Admissions	Youth			Admissions		
	Number	Percent	Cum. %	Number	Percent	Cum. %
Total	114	100%	100%	384	100%	100%
First admission	52	46%	46%	52	14%	14%
Multiple admissions	62	54%	54%	332	86%	86%
2 nd	18	16%	61%	36	9%	23%
3 rd	8	7%	68%	24	6%	29%
4 th	8	7%	75%	32	8%	38%
5 th	6	5%	81%	30	8%	45%
6 th	6	5%	86%	36	9%	55%
7 th	2	2%	88%	14	4%	58%
8 th	5	4%	92%	40	10%	69%
9 th	1	1%	93%	9	2%	71%
10 th	1	1%	94%	10	3%	74%
11 th	1	1%	95%	11	3%	77%
12 th	0	0%	95%	0	0%	77%
13 th	2	2%	96%	26	7%	83%
14 th	2	2%	98%	28	7%	91%
15 th	0	0%	98%	0	0%	91%
16 th	1	1%	99%	16	4%	95%
17 th	0	0%	99%	0	0%	95%
18 th	0	0%	99%	0	0%	95%
19 th	0	0%	99%	0	0%	95%
20 th	1	1%	100%	20	5%	100%

Note: First admission means that, heretofore, a juvenile had never been admitted to Secure Detention, Level III Residential, Level IV, Level V, nor Division of Family Services (DFS) and Child Mental Health (CMH) programs that provide residential services. Included in the count of multiple admissions are those admitted to Secure Detention, Level III Residential, Level IV, Level V, and DFS and CMH programs that provide residential services which are classified by DSCYF as crisis bed; mental health; residential group care; treatment center; residential Interagency Collaborative Team; residential treatment, mental health; and residential treatment, substance abuse.

**Admission Profile by Dispositional
Level for Fourth Quarter 2005 Stevenson House Admittees.**

Admissions	Number and percent of youth							
	Sec. Det.		L. V		L. IV		L. IIIR	
	N.	%	N.	%	N.	%	N.	%
Total	114	100	114	100	114	100	114	100
No prior admissions	62	54	87	76	84	74	70	61
Multiple admissions	52	46	27	24	30	26	44	39
2 nd	23	20	13	11	17	15	23	20
3 rd	9	8	6	5	8	7	13	11
4 th	6	5	6	5	2	2	7	6
5 th	7	6	1	1	2	2	1	1
6 th	4	4	0	.	1	1	0	.
7 th	1	1	1	1	0	.	0	.
8 th	0	.	0	.	0	.	0	.
9 th	0	.	0	.	0	.	0	.
10 th	1	1	0	.	0	.	0	.
11 th	0	.	0	.	0	.	0	.
12 th	1	1	0	.	0	.	0	.

Note: Included in the count of multiple admissions are those admitted to Secure Detention (Sec. Det.), Level III Residential (L. IIIR), Level IV, Level V, and Division of Family Services and Child Mental Health programs that provide residential services which are classified by DSCYF as crisis bed; mental health; residential group care; treatment center; residential Interagency Collaborative Team; residential treatment, mental health; and residential treatment, substance abuse.

Reading this table: This table shows that 46 percent of youth admitted to the Stevenson House during the fourth quarter of 2005 had prior admissions to secure detention, 24 percent to Level V, 26 percent to Level IV, and 39 percent to Level IIIR. Twelve of the 54 youth without prior detention admissions had prior admissions to Levels IIIR, IV and/or V.

Leading Charge at Admission, Fourth Quarter 2005.

<u>Detained felonies and misdemeanors, 10 Del.C. § 1007(a)(2)</u>	
Assault in the second degree	1
Assault in the third degree	3
Burglary in the second degree	10
Burglary in the third degree	2
Carrying a concealed dangerous instrument	1
Forgery in the second degree	1
Hate crimes	2
Identity theft, victim is 62 years or older	1
Menacing, aggravated	3
Possession of a deadly weapon during the commission of a felony	3
Possession of a firearm during the commission of a felony	2
Possession with intent to deliver narcotics	4
Rape in the second degree	2
Riot	1
Robbery in the first degree	1
Robbery in the second degree	1
Sexual exploitation of a child	1
Theft, felony	2
Trafficking in cocaine from 50 to 100 grams	1
Unlawful sexual contact in the third degree	1
Subtotal	43
<u>Failure to appear and fugitives pursuant to 10 Del.C. §§ 1007(a)(1), (a)(3)</u>	
Capias	4
Failure to appear in court	4
Subtotal	8

Leading Charge at Admission, Fourth Quarter 2005.

Detained admissions not pursuant to 10 Del.C. § 1007	
Civil contempt, juvenile fails to pay fines	1
Conspiracy in the third degree	1
Criminal contempt	1
Criminal impersonation	1
Disorderly conduct	1
Menacing	2
Offensive touching	6
Offensive touching, attempted	1
Resisting arrest	1
Shoplifting, misdemeanor	2
Shoplifting, misdemeanor, attempted	1
Terroristic threatening, misdemeanor	6
Theft, misdemeanor	2
Theft, misdemeanor, attempted	1
Unauthorized use of a motor vehicle	3
Subtotal	30
Administrative violations and holds	
Administrative hold	3
Administrative hold, Aftercare revocation	8
Subtotal	11

Leading Charge at Admission, Fourth Quarter 2005.

<u>Sentenced admissions pursuant to an adjudication</u>	
Assault in the third degree	1
Burglary in the second degree	2
Burglary in the third degree	2
Criminal mischief unclassified misdemeanor	2
Disorderly conduct	1
Possession of burglar's tools	1
Possession of drug paraphernalia	1
Possession or use of a nonnarcotic	1
Shoplifting, misdemeanor	1
Tampering with physical evidence	1
Theft, misdemeanor	1
Unauthorized use of a motor vehicle	1
Unlawful sexual contact in the second degree	2
Violation of probation	5
<u>Subtotal</u>	<u>22</u>
<u>Total</u>	<u>114</u>

Crime Category at Admission, Fourth Quarter 2005.

<u>Category</u>	<u>Number</u>	<u>Percent</u>
Violent felony	36	32
Violent misdemeanor	12	11
Non-violent felony	10	9
Non-violent misdemeanor	35	31
Unclassified misdemeanor	5	4
Probation violation	5	4
Administrative hold/Aftercare revocation	11	10
<u>Total</u>	<u>114</u>	<u>100</u>

Length of Stay on December 31, 2005.

LOS in intervals	Youth			
	Number	Length of Stay		
		Average	Median	Maximum
1 to 3 days	2	2	2	2
4 to 14 days	5	10	11	13
15 to 29 days	1	25	25	25
30 to 59 days	7	44	40	59
60 to 119 days	3	94	94	107
120 to 179 days	7	141	144	156
180 plus days	4	283	282	355
Summary	29	96	59	355

Legal Status by Average LOS at Snapshot on December 31, 2005.

	Detained		Sentenced		Total	
	No.	LOS	No.	LOS	No.	LOS
Family Court	12	57	6	26	18	46
30 days or less	6	12	3	12	9	12
31 days or more	6	101	3	40	9	81
Superior Court	11	178	0	.	11	178
120 days or less	2	95	0	.	2	95
121 days or more	9	196	0	.	9	196
Total	23	114	6	26	29	96

Youth's Involvement on December 31, 2005.

Detained	Number	LOS in days
Aftercare	5	123
Child Mental Health	3	48
Division of Family Services	23	114
Probation	1	38
Serious Juvenile Offender and Comprehensive Aftercare Program	8	119
Family Court detainees	12	57
Superior Court detainees	11	178
<hr/>		
Sentenced		
Family Court	6	26

Population Demographics on December 31, 2005.

Race/ethnicity and age	Gender		Total	
	Female	Male	Number	Percent
African American				
14	0	5	5	17
15	1	3	4	14
16	1	7	8	28
17	0	5	5	17
18	0	1	1	3
Subtotal	2	21	23	79
White				
14	0	2	2	7
15	0	2	2	7
17	1	1	2	7
Subtotal	1	5	6	21
Total	3	26	29	100

Fourth Quarter 2005 Releases.

To whom released/program	Number	Percent	LOS in days	
			Mean	Max.
Releases to the community				
Community Services, Abraxas	1	1	6	6
Community Services, Abraxas IIIA, Intensive Home Services	1	1	15	15
Community Services, Camelot	1	1	2	2
Community Services, Camelot non-secure detention	2	1	3	3
Community Services, Peoples Place II	3	2	17	48
Community Services, Peoples Place II, non-secure detention	8	6	8	41
Division of Family Services	5	4	10	36
Division of Family Services, Avalon	1	1	26	26
Guardian	2	1	86	169
Parent	48	36	13	225
Probation	1	1	15	15
Relative	4	3	5	11
Subtotal	78	58	14	225
Releases to a secure placement				
Child Mental Health, Riverside Treatment Services, Inc.	2	1	55	64
Community Services, Abraxas- Drug Seller	1	1	71	71
Community Services, Chamberlain Academy High Impact	2	1	43	57
Community Services, Diversified Treatment Alternatives	1	1	4	4
Community Services, Glen Mills Schools	2	1	60	99
Community Services, Grace Cottage- Long Term	2	1	18	23
Community Services, Hennepin County Home School	2	1	104	178
Community Services, Manatee Palms	1	1	2	2
Community Services, New Horizons Program	1	1	37	37
Community Services, Phoenix Program (ABS)	1	1	129	129
Community Services, The Pines	1	1	31	31
Community Services, Springfield Academy	1	1	30	30
Community Services, Starting Pointe	1	1	53	53
Community Services, Summit Academy	2	1	57	84
Community Services, Today, Inc., Short Term Drug Abuse	1	1	39	39
Community Services, Triad Program	1	1	184	184
Community Services, VisionQuest Boot Camp	3	2	38	73
Community Services, VisionQuest Madalyn	3	2	52	101
Community Services, Youth Services Agency	5	4	50	93
Department of Correction, YCOP	3	2	130	201
New Jersey authorities	1	1	69	69
YRS, Ferris School for Boys	5	4	22	47
YRS, New Castle County Detention Center	5	4	42	175
YRS, Snowden Cottage	9	7	37	128
Subtotal	56	42	52	201
Total	134	100	29	225

Legal Status by Average LOS at Release, Fourth Quarter 2005.

	<u>Detained</u>		<u>Sentenced</u>		<u>Total</u>	
	No.	LOS	No.	LOS	No.	LOS
Family Court	76	11	54	46	130	26
30 days or less	67	4	27	14	94	7
31 days or more	9	64	27	78	36	75
Superior Court	3	146	1	146	4	146
120 days or less	1	43	0	.	1	43
121 days or more	2	197	1	146	3	180
Total	79	16	55	48	134	29

Crime Category at Release, Fourth Quarter 2005.

Category	Number	Percent	<u>LOS in days</u>	
			Mean	Maximum
Violent felony	46	34	47	225
Violent misdemeanor	16	12	22	129
Non-violent felony	11	8	32	128
Non-violent misdemeanor	37	28	16	146
Unclassified misdemeanor	1	1	15	15
Probation violations	12	9	21	77
Administrative hold/Aftercare revocation	11	8	21	69
Total	134	100	29	225