

To: John Frazer
From: Jorge Rodríguez-Labarca
Date: January 23, 2006
Subject: Third Quarter 2005 Stevenson House Status Report

On June 30, 2005, the Stevenson House was at 91 percent of capacity –with a population of 50 and a rated capacity of 55 beds.

Admissions: During the third quarter of 2005, there were 158 admissions to the Stevenson House.

Admission demographics: Of the 158 admissions, 31 were females and 127 were males. During the third quarter 85 African American, 70 whites, and three Hispanics were admitted to the Stevenson House.

Leading charges at admission: The most frequent leading charges at admission for the third quarter were: offensive touching, 12; possession of a deadly weapon during the commission of a felony, 11; and, robbery in the first degree, 9. 49 youth, or 31 percent, were admitted to the Stevenson House for violent felonies.

Length of stay: On June 30, there were 50 youth at the Stevenson House with an average length of stay (LOS) of 57 days and a maximum LOS was 263 days.

Of the 50 youth, there were 36 Family Court youth with an average LOS was 40 days and 14 Superior Court youth with an average LOS of 102 days.

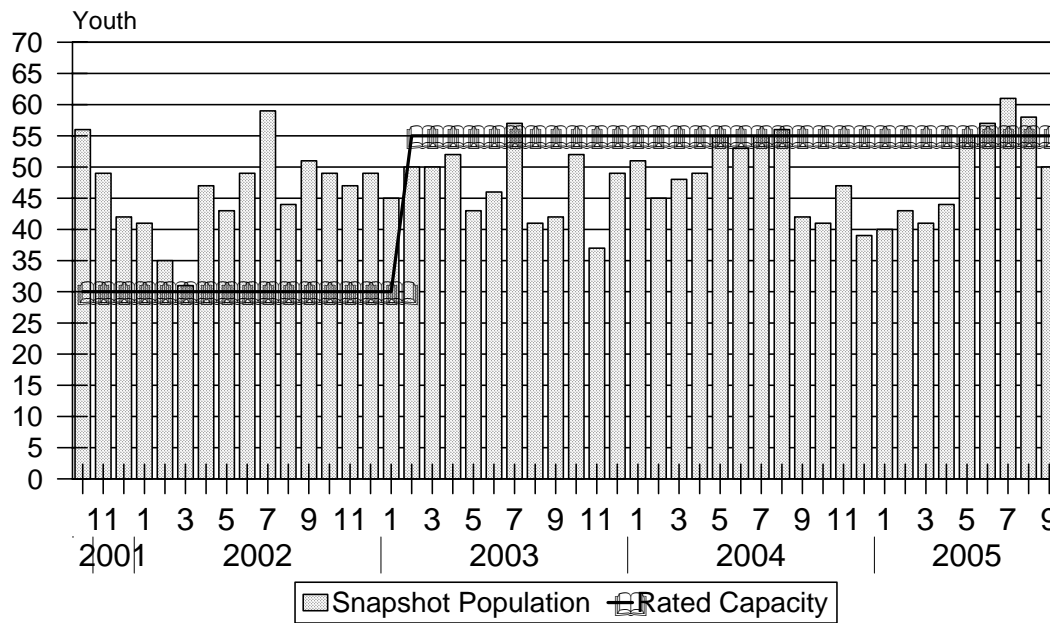
Snapshot demographics: Of the 50 youth, 8 were female and 42 were male. There were 30 African Americans, and 20 whites.

Youth's status: On June 30, there were 41 detained and 9 adjudicated youth.

Releases: 164 youth were released during the third quarter of 2005 with an average LOS of 33 days, and a maximum of 412 days.

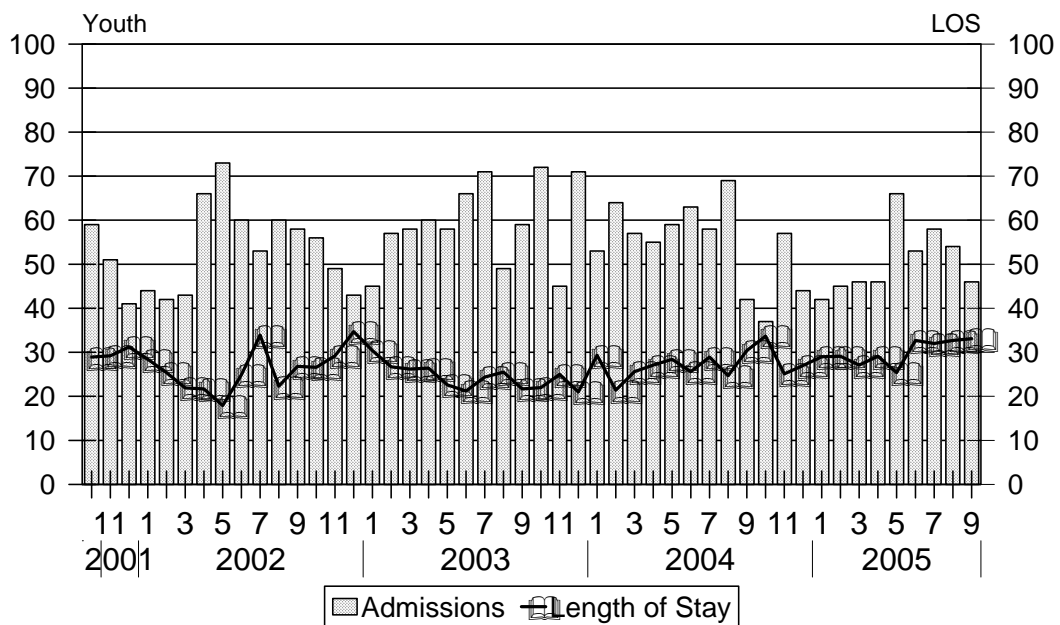
Distribution: J. Davis, R. Scoglietti, F. Rentz; E. Nestlerode; B. Shirey; Sen. M. Henry, Sen. H. McDowell; Hon. Graves, Hon. Toliver, Hon. Vaughn, L. Jablonski, M. Jordan; Hon. Kuhn, Hon. Nicholas, D. Jones, A. Shaffer, E. Torres, R. Williams; J. Kane; J. Brady, M. Connor; J. O'Connell; S. Taylor; L. Sullivan; Col. MacLeish; Hon. A. Davis; Sec. DeSantis, C. Nelson, N. Pearsall, H. Smith, P. Phelps, R. Shaw, C. Stetzar, J. Vattilana.

Stevenson House Snapshot Population and Rated Capacity



Snapshot populations are taken at the end of any given month.

Stevenson House Admissions and Time at Stevenson House



Length of Stay: Average length of stay in days at the Stevenson House given monthly admissions and populations.

Admissions, Third Quarter 2005.

Month	Number	Percent
July	58	37
August	54	34
September	46	29
Total	158	100

Admission Demographics, Third Quarter 2005.

Race/ethnicity and age	Gender		Total	
	Female	Male	Number	Percent
African American				
10	0	1	1	1
13	0	2	2	1
14	0	12	12	8
15	12	17	29	18
16	2	25	27	17
17	1	13	14	9
Subtotal	15	70	85	54
Hispanic				
15	2	0	2	1
27	0	1	1	1
Subtotal	2	1	3	2
White				
12	0	1	1	1
13	0	4	4	3
14	6	8	14	9
15	3	14	17	11
16	3	16	19	12
17	2	11	13	8
18	0	2	2	1
Subtotal	14	56	70	44
Total	31	127	158	100

**Admissions Profile for
Third Quarter 2005 Stevenson House Admittees.**

Admissions	Youth			Admissions		
	Number	Percent	Cum. %	Number	Percent	Cum. %
Total	158	100%	100%	625	100%	100%
First admission	55	35%	35%	55	9%	9%
Multiple admissions	103	65%	65%	570	91%	91%
2 nd	25	16%	51%	50	8%	17%
3 rd	11	7%	58%	33	5%	22%
4 th	19	12%	70%	76	12%	34%
5 th	16	10%	80%	80	13%	47%
6 th	4	3%	82%	24	4%	51%
7 th	7	4%	87%	49	8%	59%
8 th	4	3%	89%	32	5%	64%
9 th	3	2%	91%	27	4%	68%
10 th	3	2%	93%	30	5%	73%
11 th	3	2%	95%	33	5%	78%
12 th	1	1%	96%	12	2%	80%
13 th	1	1%	96%	13	2%	82%
14 th	1	1%	97%	14	2%	84%
15 th	1	1%	97%	15	2%	87%
16 th	0	.	97%	0	.	87%
17 th	0	.	97%	0	.	87%
18 th	1	1%	98%	18	3%	90%
19 th	1	1%	99%	19	3%	93%
20 th	0	.	99%	0	.	93%
21 st	1	1%	99%	21	3%	96%
22 nd	0	.	99%	0	.	96%
23 rd	0	.	99%	0	.	96%
24 th	1	1%	100%	24	4%	100%

Note: First admission means that, heretofore, a juvenile had never been admitted to Secure Detention, Level III Residential, Level IV, Level V, nor Division of Family Services (DFS) and Child Mental Health (CMH) programs that provide residential services. Included in the count of multiple admissions are those admitted to Secure Detention, Level III Residential, Level IV, Level V, and DFS and CMH programs that provide residential services which are classified by DSCYF as crisis bed; mental health; residential group care; treatment center; residential Interagency Collaborative Team; residential treatment, mental health; and residential treatment, substance abuse.

**Admission Profile by Dispositional
Level for Third Quarter 2005 Stevenson House Admittees.**

Admissions	Number and percent of youth							
	Sec. Det.		L. V		L. IV		L. IIIR	
	N.	%	N.	%	N.	%	N.	%
Total	158	100	158	100	158	100	158	100
No prior admissions	75	47	106	67	109	69	91	58
Multiple admissions	83	53	52	33	49	31	67	42
2 nd	37	23	33	21	37	23	28	18
3 rd	15	9	13	8	7	4	25	16
4 th	11	7	3	2	2	1	10	6
5 th	9	6	2	1	0	.	4	3
6 th	4	3	0	.	1	1	0	.
7 th	1	1	0	.	0	.	0	.
8 th	3	2	0	.	2	1	0	.
9 th	1	1	1	1	0	.	0	.
10 th	2	1	0	.	0	.	0	.

Note: Included in the count of multiple admissions are those admitted to Secure Detention (Sec. Det.), Level III Residential (L. IIIR), Level IV, Level V, and Division of Family Services and Child Mental Health programs that provide residential services which are classified by DSCYF as crisis bed; mental health; residential group care; treatment center; residential Interagency Collaborative Team; residential treatment, mental health; and residential treatment, substance abuse.

Reading this table: This table shows that 53 percent of youth admitted to the Stevenson House during the third quarter of 2005 had prior admissions to secure detention, 33 percent to Level V, 31 percent to Level IV, and 42 percent to Level IIIR. Sixteen of the 75 youth without prior detention admissions had prior admissions to Levels IIIR, IV and/or V.

Leading Charge at Admission, Third Quarter 2005.

<u>Detained felonies and misdemeanors, 10 Del.C. § 1007(a)(2)</u>	
Aggravated act of intimidation	1
Assault in the first degree	1
Assault in the third degree	5
Burglary in the second degree	4
Burglary in the third degree	1
Conspiracy in the second degree	1
Forgery in the first degree	1
Possession of a deadly weapon during the commission of a felony	11
Possession of a firearm during felony	2
Possession of burglar's tools	2
Possession with intent to deliver narcotics	6
Rape in the first degree	1
Rape in the second degree	3
Reckless endangering in the first degree	1
Robbery in the first degree	9
Robbery in the second degree	2
Theft, felony	1
Trafficking in cocaine from 10 to 50 grams	1
Unlawful sexual contact in the third degree	1
Subtotal	54
<u>Failure to appear and fugitives pursuant to 10 Del.C. §§ 1007(a)(1), (a)(3)</u>	
Capias	4
Failure to appear in court	6
Subtotal	10

Leading Charge at Admission, Third Quarter 2005.

Detained admissions not pursuant to 10 Del.C. § 1007	
Criminal contempt	4
Criminal mischief, unclassified misdemeanor	1
Criminal trespassing in the first degree	1
Disorderly conduct	1
Endangering the welfare of a child	1
Escape in the third degree	2
Menacing	4
Offensive touching	10
Possession of drug paraphernalia	3
Resisting arrest	3
Shoplifting, misdemeanor	1
Terroristic threatening, misdemeanor	5
Theft, misdemeanor, victim is 60 years or older	1
Theft, misdemeanor	4
Unauthorized use of a vehicle	2
Underage possession or consumption of alcohol	1
Vehicular assault in the second degree, DUI	1
Subtotal	45
Administrative violations and holds	
Administrative hold	4
Administrative hold, Aftercare revocation	3
Internal transfer	3
Subtotal	10

 Leading Charge at Admission, Third Quarter 2005.

 Sentenced admissions pursuant to an adjudication

Assault in the first degree	1
Assault in the second degree	3
Assault in the third degree	1
Burglary in the second degree	1
Burglary in the third degree	2
Conspiracy in the third degree	1
Drug court violation	2
Falsely reporting an incident	1
Internal transfer	4
Offensive touching	2
Possession of a weapon in a safe school zone	1
Possession of drug paraphernalia	1
Possession or use of a non-narcotic	1
Possession with intent to deliver narcotics	1
Receiving stolen property, felony	1
Receiving stolen property, misdemeanor	1
Reckless endangering in the second degree	1
Resisting arrest	1
Robbery in the second degree	1
Terroristic threatening, misdemeanor	3
Unauthorized use of a motor vehicle	1
Underage possession or consumption of alcohol	1
Violation of probation	7
<hr/> Subtotal	<hr/> 39
Total	158

Crime Category at Admission, Third Quarter 2005.

Category	Number	Percent
Violent felony	49	31
Violent misdemeanor	17	11
Non-violent felony	10	6
Non-violent misdemeanor	53	34
Unclassified misdemeanor	6	4
Probation violation	7	4
Administrative hold/Aftercare revocation	14	9
Drug Court violations	2	1
Total	158	100

Length of Stay on June 30, 2005.

LOS in intervals	<u>Youth</u>	<u>Length of Stay</u>		
	Number	Average	Median	Maximum
1 to 3 days	7	2	2	3
4 to 14 days	6	10	10	12
15 to 29 days	11	22	23	28
30 to 59 days	11	45	45	57
60 to 119 days	5	86	81	111
120 to 179 days	6	133	131	147
180 plus days	4	207	190	263
Summary	50	57	33	263

Legal Status by Average LOS at Snapshot on June 30, 2005.

	<u>Detained</u>		<u>Sentenced</u>		<u>Total</u>	
	No.	LOS	No.	LOS	No.	LOS
Family Court	28	46	8	19	36	40
30 days or less	16	11	7	16	23	13
31 days or more	12	93	1	36	13	88
Superior Court	13	100	1	122	14	102
120 days or less	9	53	0	.	9	53
121 days or more	4	207	1	122	5	190
Total	41	63	9	30	50	57

Youth's Involvement on June 30, 2005.

Detained	Number	LOS in days
Aftercare	11	48
Child Mental Health	4	52
Division of Family Services	3	58
Probation	3	106
Serious Juvenile Offender and Comprehensive Aftercare Program	13	57
Family Court detainees	28	46
Superior Court detainees	13	100
Sentenced		
Division of Family Services	1	1
Serious Juvenile Offender and Comprehensive Aftercare Program	3	8
Family Court	8	19
Superior Court	1	122

Population Demographics on June 30, 2005.

Race/ethnicity and age	Gender		Total	
	Female	Male	Number	Percent
African American				
13	0	3	3	6
14	0	3	3	6
15	1	5	6	12
16	1	9	10	20
17	1	7	8	16
Subtotal	3	27	30	60
White				
12	0	1	1	2
13	0	1	1	2
14	0	4	4	8
15	2	2	4	8
16	2	6	8	16
17	1	1	2	4
Subtotal	5	15	20	40
Total	8	42	50	100

Releases, Third Quarter 2005.

To whom released/program	Number	Percent	LOS in days	
			Mean	Max.
Releases to the community				
Community Services, Abraxas IIIA, Intensive Home Services	2	1	14	22
Community Services, Camelot, Non-Secure Detention	2	1	2	3
Community Services, Peoples Place II	3	2	4	4
Community Services, Peoples Place II, Non-Secure Detention	13	8	3	6
Division of Family Services	8	5	18	47
Guardian	1	1	9	9
Parent	44	27	13	59
Relative	7	4	20	77
Subtotal	80	49	12	77
Releases to a secure placement				
Child Mental Health, Brenford Place	1	1	106	106
Child Mental Health, Delaware Guidance Services For Children	1	1	2	2
Child Mental Health, Middletown Manor RTC	1	1	64	64
Child Mental Health, Riverside Treatment Services, Inc.	1	1	40	40
Community Services, Chamberlain Academy High Impact	2	1	53	95
Community Services, Clarinda Academy	2	1	94	140
Community Services, Diversified Treatment Alternatives	1	1	92	92
Community Services, George Jr. Republic	1	1	45	45
Community Services, Glen Mills Schools	3	2	47	75
Community Services, Hennepin County	1	1	60	60
Community Services, Mountain Manor Treatment Center	2	1	31	31
Community Services, Sleepy Hollow Academy	1	1	58	58
Community Services, Springfield Academy	3	2	35	56
Community Services, Starting Pointe	1	1	160	160
Community Services, Summit Academy	2	1	14	23
Community Services, The Phoenix Program	1	1	157	157
Community Services, The Pines	1	1	61	61
Community Services, Today, Inc. - Short Term Drug Abuse	1	1	30	30
Community Services, VisionQuest Boot Camp	4	2	34	73
Community Services, VisionQuest Madalyn	2	1	34	43
Community Services, VisionQuest Quest	2	1	52	65
Community Services, Youth Services Agency	8	5	38	193
Department Of Correction	3	2	41	92
Department Of Correction, YCOP	2	1	290	310
YRS, Ferris School For Boys	16	10	22	90
YRS, Grace Cottage	6	4	108	412
YRS, New Castle County Detention Center	9	5	45	99
YRS, Snowden Cottage	5	3	48	151
YRS, Stevenson House Detention Center	1	1	2	2
Subtotal	84	51	53	412
Total	164	100	33	412

Legal Status by Average LOS at Release, Third Quarter 2005.

	<u>Detained</u>		<u>Sentenced</u>		<u>Total</u>	
	No.	LOS	No.	LOS	No.	LOS
Family Court	69	8	86	45	155	28
30 days or less	62	4	45	16	107	9
31 days or more	7	39	41	77	48	72
Superior Court	9	112	0	.	9	112
120 days or less	7	61	0	.	7	61
121 days or more	2	290	0	.	2	290
Total	78	20	86	45	164	33

Crime Category at Release, Third Quarter 2005.

Category	Number	Percent	<u>LOS in days</u>	
			Mean	Maximum
Violent felony	47	29	48	412
Violent misdemeanor	24	15	24	106
Non-violent felony	17	10	67	193
Non-violent misdemeanor	55	34	16	73
Traffic misdemeanor	1	1	75	75
Unclassified misdemeanor	3	2	26	30
Probation violations	13	8	24	58
Administrative hold/Aftercare revocation	2	1	38	45
Drug Court violations	2	1	13	22
Total	164	100	33	412