



**State of Delaware
Executive Department
Office of Management and Budget**

To: John Frazer
From: Jorge Rodríguez-Labarca
Date: May 10, 2010
Subject: First Quarter 2010 New Castle County Detention Center Status Report

On March 31, 2010, with a population of 51 the Detention Center was not over capacity. The capacity of 64 beds was not exceeded.

Admissions: There were 138 admissions to the Detention Center during the first quarter of 2010.

Admission demographics: Of the 138 admissions, 26 were females and 112 were males. During the first quarter 100 African Americans and 38 whites were admitted to the Detention Center.

Leading charges at admission: The most frequent leading charges at admission for the first quarter were violation of probation, 38; burglary in the second degree, and, felony receiving stolen property, 8. Forty-three youth, or 31 percent, were admitted to the Detention Center for violent felonies.

Length of stay: There were 51 youth at the Detention Center with an average length of stay (LOS) of 50 days and a maximum LOS of 554 days on March 31, 2010.

Of the 51 youth, there were 42 Family Court youth with an average LOS of 26 days, and 9 Superior Court youth with an average LOS of 163 days.

Snapshot demographics: Of the 51 youth on March 31, 8 were female and 43 were male. There were 43 African Americans and 8 whites.

Youth's status: There were 42 detained and 9 adjudicated youth on March 31, 2010.

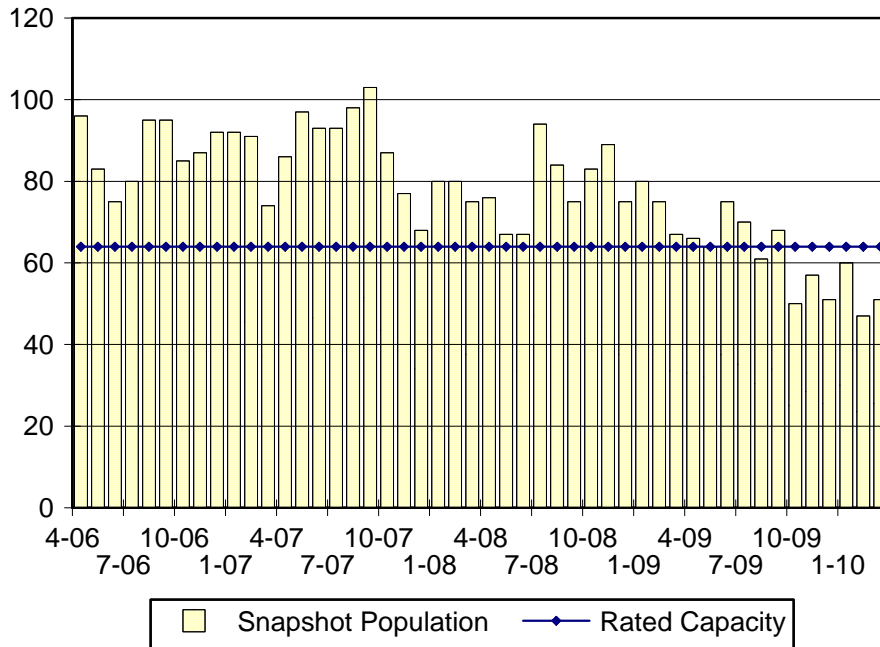
Releases: 141 youth were released during the first quarter of 2010 with an average LOS of 38 days, and a maximum of 390 days.



**Budget Development, Planning and Administration
Statistical Analysis Center**

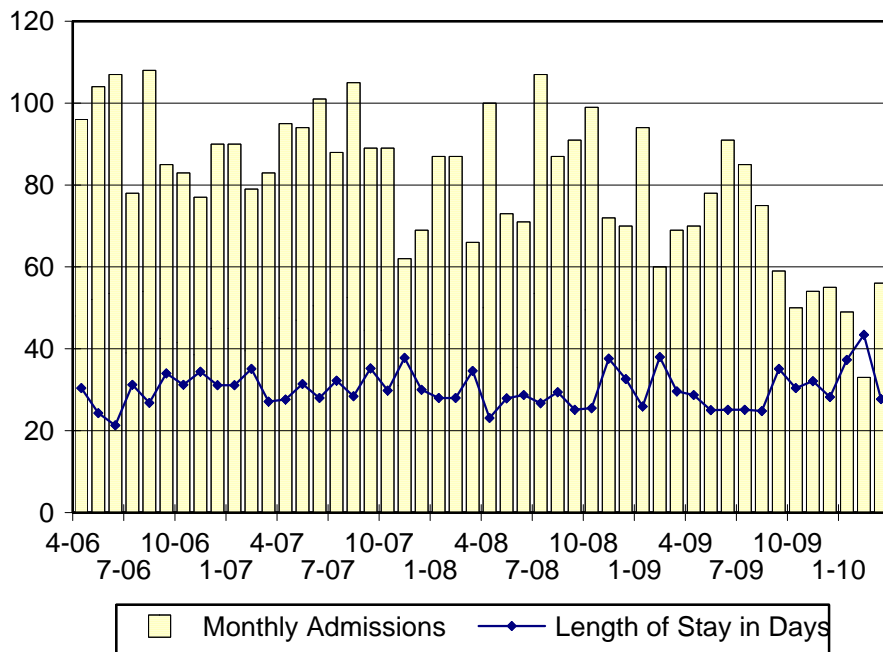
410 Federal Street • Suite 6 • Dover, DE 19901
Phone: (302) 739-4626 • Fax: (302) 739-4630 • www.omb.delaware.gov

NCCDC Snapshot Population and Rated Capacity



Snapshot populations are taken at the end of any given month.

NCCDC Admissions and Time at NCCDC



Length of Stay: Average length of stay in days at the Detention Center given monthly admissions and populations.

Admissions, First Quarter 2010.

Month	Number	Percent
January	49	36
February	33	24
March	56	41
Total	138	100

Admission Demographics, First Quarter 2010.

Race/ethnicity and age	Gender		Total	
	Female	Male	Number	Percent
African American				
13	1	2	3	2
14	7	9	16	12
15	4	14	18	13
16	2	23	25	18
17	6	31	37	27
18	0	1	1	1
Subtotal	20	80	100	72
White				
13	0	2	2	1
14	0	2	2	1
15	1	5	6	4
16	2	8	10	7
17	3	15	18	13
Subtotal	6	32	38	28
Total	26	112	138	100

Admissions Profile for First Quarter 2010 NCCDC Admittees.

Admissions	Youth			Admissions		
	Number	Percent	Cum. %	Number	Percent	Cum. %
Total	138	100%	100%	705	100%	100%
First admission	35	25%	25%	35	5%	5%
Multiple admissions	103	75%	75%	670	95%	95%
2 nd	18	13%	38%	36	5%	10%
3 rd	8	6%	44%	24	3%	13%
4 th	11	8%	52%	44	6%	20%
5 th	17	12%	64%	85	12%	32%
6 th	6	4%	69%	36	5%	37%
7 th	10	7%	76%	70	10%	47%
8 th	3	2%	78%	24	3%	50%
9 th	8	6%	84%	72	10%	60%
10 th	6	4%	88%	60	9%	69%
11 th	4	3%	91%	44	6%	75%
12 th	2	1%	93%	24	3%	79%
13 th	2	1%	94%	26	4%	82%
14 th	5	4%	98%	70	10%	92%
15 th	0	.	98%	0	.	92%
16 th	0	.	98%	0	.	92%
17 th	0	.	98%	0	.	92%
18 th	2	1%	99%	36	5%	97%
19 th	1	1%	100%	19	3%	100%

Note: First admission means that, heretofore, a juvenile had never been admitted to Secure Detention, residential Level III, Level IV, Level V, or Division of Family Services (DFS) and Child Mental Health (CMH) programs that provide residential services. Included in the count of multiple admissions are those admitted to Secure Detention, residential Level III, Level IV, Level V, and DFS and CMH programs that provide residential services which are classified by DSCYF as crisis bed; mental health; residential group care; treatment center; residential Interagency Collaborative Team; residential treatment, mental health; and residential treatment, substance abuse.

**Admission Profile by Dispositional
Level for First Quarter 2010 NCCDC Admittees.**

Admissions	Number and percent of youth							
	Sec. Det.		L. V		L. IV		L. III	
	N.	%	N.	%	N.	%	N.	%
Total	138	100	138	100	138	99	138	100
No prior admissions	52	38	112	81	72	52	35	25
Multiple admissions	86	62	26	19	66	47	103	75
2 nd	27	20	11	8	14	10	29	21
3 rd	19	14	10	7	16	12	20	14
4 th	23	17	3	2	9	7	21	15
5 th	11	8	2	1	6	4	18	13
6 th	4	3	0	.	9	7	8	6
7 th	2	1	0	.	5	4	1	1
8 th	0	.	0	.	1	1	2	1
9 th	0	.	0	.	1	1	1	1
10 th	0	.	0	.	3	2	0	.
11 th	0	.	0	.	0	.	2	1
12 th	0	.	0	.	0	.	0	.
13 th	0	.	0	.	1	1	0	.
14 th	0	.	0	.	0	.	1	1
15 th	0	.	0	.	1	1	0	.

Note: Included in the count of multiple admissions are those admitted to Secure Detention (Sec. Det.), Level III, Level IV, Level V, and Division of Family Services and Child Mental Health programs that provide residential services which are classified by DSCYF as crisis bed; mental health; residential group care; treatment center; residential Interagency Collaborative Team; residential treatment, mental health; and residential treatment, substance abuse.

Reading this table: This table shows that 62 percent of youth admitted to the New Castle County Detention Center during the first quarter of 2010 had prior admissions to secure detention, 19 percent to Level V, 47 percent to Level IV, and 75 percent to Level III. Twenty-eight of the 62 youth without prior detention admissions had prior admissions to Levels III, IV and/or V.

Leading Charge at Admission, First Quarter 2010.

Detained felonies and misdemeanors, 10 Del.C. § 1007(a)(2)	Total	Gender		Minority	
		F	M	W	M
Assault in a detention facility, causing injury	1	0	1	0	1
Assault in a detention facility, causing serious injury	1	0	1	0	1
Assault in the second degree	3	1	2	0	3
Assault in the third degree	5	3	2	1	4
Burglary in the second degree	8	1	7	3	5
Burglary in the second degree, attempted	1	0	1	0	1
Burglary in the third degree, attempted	1	0	1	0	1
Carjacking in the first degree, class B felony	1	0	1	0	1
Escape in the second degree	1	0	1	0	1
Maintaining a dwelling for keeping controlled substances	1	0	1	1	0
Murder in the first degree	1	0	1	1	0
Possession of a deadly weapon by a person prohibited	1	0	1	1	0
Possession of a deadly weapon by a person prohibited, firearm	1	0	1	0	1
Possession of a deadly weapon during the commission of a felony	4	1	3	0	4
Possession of a firearm during the commission of a felony	1	0	1	0	1
Possession with intent to deliver narcotics	5	0	5	1	4
Possession with intent to deliver non-narcotics	2	0	2	0	2
Rape in the second degree	2	0	2	0	2
Receiving stolen property, felony	7	0	7	1	6
Robbery in the first degree	5	1	4	2	3
Robbery in the first degree, attempted	1	0	1	0	1
Robbery in the second degree	1	0	1	0	1
Theft of a motor vehicle	2	0	2	0	2
Theft, misdemeanor, where the victim is 62 years or older	1	0	1	1	0
Theft, felony	1	0	1	1	0
Trafficking in cocaine from 10 to 50 grams	1	0	1	0	1
Trafficking in illegal drugs from 2.5 to less than 10 grrams	1	0	1	0	1
Vehicular homicide in the second degree, criminal negligence	2	2	0	0	2
Wearing a disguise during the commission of a felony	1	0	1	0	1
Subtotal	63	9	54	13	50
Administrative violations and holds					
Administrative hold, return from program	4	0	4	1	3
Subtotal	4	0	4	1	3

Leading Charge at Admission, First Quarter 2010.

Detained admissions for charges not referenced in 10 Del.C. § 1007 Total	Gender		Minority	
	F	M	W	M
Breach of conditions of release, misdemeanor	2	2 0	0 2	0 2
Civil contempt, juvenile fails to pay fines	1	0 1	0 1	0 1
Criminal contempt	2	0 2	1 1	1 1
Criminal mischief, unclassified misdemeanor	1	1 0	0 1	0 1
Escape in the third degree	1	0 1	1 0	1 0
Harassment	1	0 1	0 1	0 1
Material witness	1	1 0	0 1	0 1
Menacing	1	0 1	0 1	0 1
Offensive touching	1	0 1	1 0	1 0
Possession of non-controlled prescription drug	1	0 1	0 1	0 1
Possession or use of a non-narcotic	1	0 1	1 0	1 0
Possession or use of narcotics	1	0 1	0 1	0 1
Shoplifting, misdemeanor	2	1 1	1 1	1 1
Terroristic threatening, misdemeanor	1	0 1	0 1	0 1
Theft, misdemeanor	1	0 1	1 0	1 0
Underage possession or consumption of alcohol	1	0 1	1 0	1 0
Subtotal	19	5 14	7 12	7 12
Failure to appear, 10 Del.C. § 1007(a)(3)				
Failure to appear in court	3	0 3	1 2	1 2
Subtotal	3	0 3	1 2	1 2
Repeated failure to comply, 10 Del.C. § 1007(a)(4)				
Escape in the third degree	1	0 1	0 1	0 1
Violation of probation	3	1 2	1 2	1 2
Subtotal	4	1 3	1 3	1 3
Violation of probation pursuant to 11 Del.C. § 4334				
Violation of probation	25	9 16	7 18	7 18
Subtotal	25	9 16	7 18	7 18

Leading Charge at Admission, First Quarter 2010.

Sentenced admissions pursuant to an adjudication	Total	Gender		Minority	
		F	M	W	M
Assault in the second degree	2	0	2	0	2
Drug Court violation	2	0	2	2	0
Offensive touching	1	0	1	1	0
Possession or use of a non-narcotic	1	1	0	0	1
Receiving stolen property, felony	1	0	1	0	1
Shoplifting, misdemeanor	1	1	0	0	1
Theft, felony	1	0	1	0	1
Theft, misdemeanor	1	0	1	0	1
Violation of probation	10	0	10	5	5
Subtotal	20	2	18	8	12
Total	138	26	112	38	100

Crime Category at Admission, First Quarter 2010.

Category	Number	Percent
Violent felony	43	31
Violent misdemeanor	7	5
Nonviolent felony	19	14
Nonviolent misdemeanor	22	16
Unclassified misdemeanor	2	1
Probation violation	38	28
Drug Court violation	3	2
Administrative hold/Aftercare revocation	4	3
Total	138	100

While 38 youth were admitted solely for a violation of probation (VOP), another 27 had a VOP and an arrest for another crime. A total of 65 youth were charged with a VOP.

Length of Stay on March 31, 2010.

LOS in intervals	Youth			
	Number	Length of Stay		
		Average	Median	Maximum
1 to 3 days	3	2	3	3
4 to 14 days	17	8	8	14
15 to 29 days	15	22	22	27
30 to 59 days	7	43	41	57
60 to 119 days	2	90	90	115
120 to 179 days	4	144	142	174
180 plus days	3	337	229	554
Summary	51	50	21	554

Legal Status by Average LOS on March 31, 2010.

	Detained		Sentenced		Total	
	No.	LOS	No.	LOS	No.	LOS
Family Court	33	29	9	14	42	26
30 days or less	26	14	9	14	35	14
31 days or more	7	82	0	.	7	82
Superior Court	9	163	0	.	9	163
120 days or less	4	57	0	.	4	57
121 days or more	5	248	0	.	5	248
Total	42	57	9	14	51	50

Youth's Involvement on March 31, 2010.

Detained	Number	LOS in days
Aftercare	6	53
Probation	0	.
Division of Child Mental Health	1	55
Family Court detainees	33	29
Superior Court detainees	9	163
Sentenced		
Division of Family Services	0	.
Division of Child Mental Health	1	10
Family Court	9	14
Superior Court	0	.

Population Demographics on March 31, 2010.

Race/ethnicity and age	Gender		Total	
	Female	Male	Number	Percent
African American				
13	1	0	1	2
14	2	5	7	14
15	1	6	7	14
16	1	9	10	20
17	2	16	18	35
Subtotal	7	36	43	84
White				
13	0	1	1	2
15	0	1	1	2
16	1	1	2	4
17	0	4	4	8
Subtotal	1	7	8	16
Total	8	43	51	100

Releases, First Quarter 2010.

To whom released/program	Number	Percent	LOS in days	
			Mean	Max.
Releases to the community				
Community Services, Camelot, Non-Secure Detention	10	7	5	15
Community Services, Camelot, Shelter	3	2	7	15
Community Services, G4S Justice Services, Inc., E. M.	3	2	12	19
Community Services, Moore Proactive Solutions, Non. Sec. Det.	1	1	6	6
Community Services, Peoples Place II, Non-Secure Detention	2	1	2	2
Community Services, Peoples Place II, Shelter	1	1	6	6
Community Services, Project Stay Free, Day Treatment	1	1	21	21
Community Services, Project Stay Free, Electronic Monitoring	4	3	37	106
Community Services, Project Stay Free, ICCP	1	1	3	3
Community Services, Project Stay Free, Det. Intervention	1	1	6	6
Division of Family Services	2	1	103	203
Division of Family Services, Child Inc., Shelter	1	1	19	19
Division of Family Services, Peoples Place II	1	1	29	29
Parent	28	20	39	390
Relative	2	1	21	29
Total	61	43	28	390
Releases to a secure placement				
Child Mental Health, Coastal Harbor Treatment Center	1	1	44	44
Community Services, Glen Mills Schools	6	4	24	35
Community Services, Mountain Manor Treatment Center	5	4	31	68
Community Services, Southwest Indiana	3	2	60	95
Community Services, Today Inc.	3	2	42	51
Community Services, Youth Services Agency	10	7	25	48
Department of Correction, General Population	3	2	138	230
Department of Correction, YCOP	3	2	172	268
U.S. Immigration and Customs Enforcement Bureau	1	1	178	178
YRS, Ferris School for Boys	20	14	47	152
YRS, Grace Cottage	3	2	15	30
YRS, Mowlds Cottage	9	6	24	86
YRS, New Castle County Detention Center	1	1	79	79
YRS, Snowden	10	7	43	74
YRS, Stevenson House Detention Center	2	1	5	5
Total	80	57	46	268
Total releases	141	100	38	390

Legal Status by Average LOS at Release, First Quarter 2010.

	<u>Detained</u>		<u>Sentenced</u>		<u>Total</u>	
	No.	LOS	No.	LOS	No.	LOS
Family Court	42	18	90	36	132	30
30 days or less	37	8	51	18	88	14
31 days or more	5	95	39	59	44	63
Superior Court	7	139	2	216	9	156
120 days or less	4	56	0	.	4	56
121 days or more	3	249	2	216	5	236
Total	49	36	92	40	141	38

Crime Category at Release, First Quarter 2010.

Category	Number	Percent	<u>LOS in days</u>	
			Mean	Maximum
Violent felony	39	28	70	390
Violent misdemeanor	6	4	35	107
Non-violent felony	16	11	20	39
Non-violent misdemeanor	40	28	37	203
Unclassified misdemeanor	3	2	8	22
Probation violation	34	24	17	95
Drug Court violation	3	2	9	19
Administrative hold/Aftercare revocation	1	1	35	35
Total	141	100	38	390