



**State of Delaware
Executive Department
Office of Management and Budget**

To: John Frazer
From: Jorge Rodríguez-Labarca
Date: February 4, 2010
Subject: Fourth Quarter 2009 New Castle County Detention Center Status Report

On December 31, 2009, with a population of 51 the Detention Center was not over capacity. The capacity of 64 beds was not exceeded.

Admissions: There were 159 admissions to the Detention Center during the fourth quarter of 2009.

Admission demographics: Of the 159 admissions, 34 were females and 125 were males. During the fourth quarter 120 African Americans, 1 Hispanics and 38 whites were admitted to the Detention Center.

Leading charges at admission: The most frequent leading charges at admission for the fourth quarter were violation of probation, 37; robbery in the first degree, 13; and, failure to appear in court, 8. Fifty-seven youth, or 36 percent, were admitted to the Detention Center for violent felonies.

Length of stay: There were 51 youth at the Detention Center with an average length of stay (LOS) of 55 days and a maximum LOS of 464 days on December 31, 2009.

Of the 51 youth, there were 38 Family Court youth with an average LOS of 29 days, and 13 Superior Court youth with an average LOS of 133 days.

Snapshot demographics: Of the 51 youth on December 31, 8 were female and 43 were male. There were 41 African Americans and 10 whites.

Youth's status: There were 40 detained and 11 adjudicated youth on December 31, 2009.

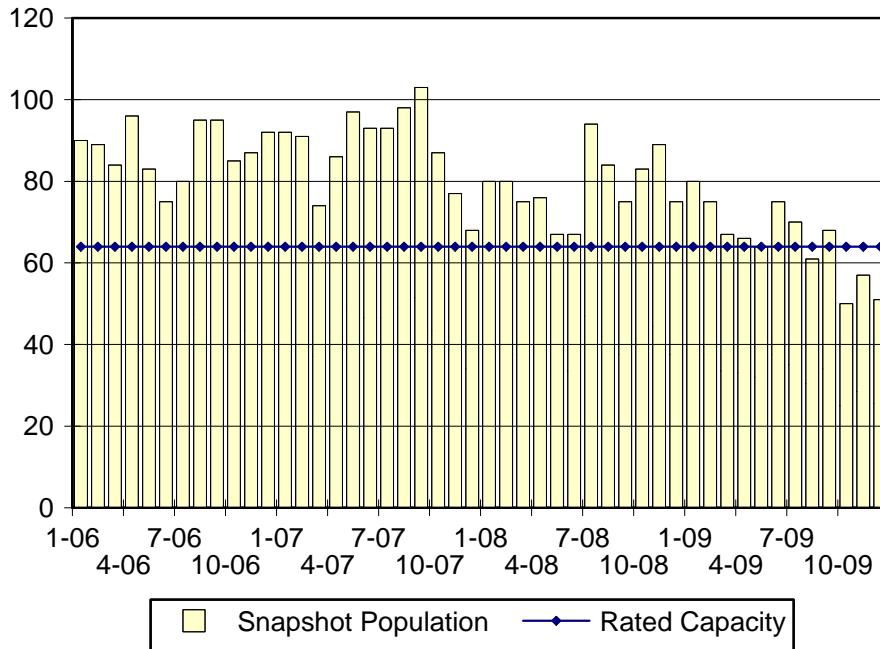
Releases: 173 youth were released during the fourth quarter of 2009 with an average LOS of 33 days, and a maximum of 402 days.



**Budget Development, Planning and Administration
Statistical Analysis Center**

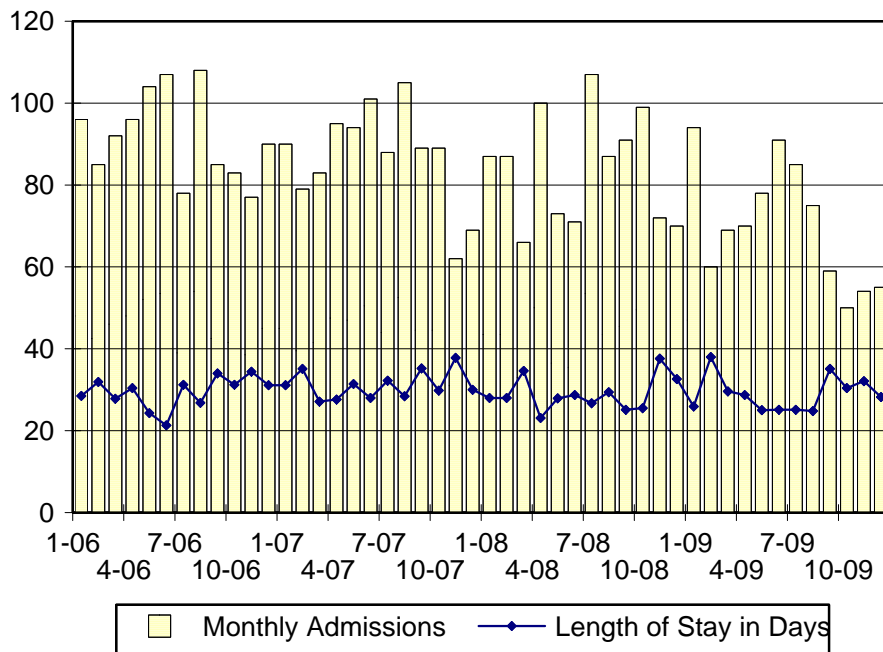
410 Federal Street • Suite 6 • Dover, DE 19901
Phone: (302) 739-4626 • Fax: (302) 739-4630 • www.omb.delaware.gov

NCCDC Snapshot Population and Rated Capacity



Snapshot populations are taken at the end of any given month.

NCCDC Admissions and Time at NCCDC



Length of Stay: Average length of stay in days at the Detention Center given monthly admissions and populations.

Admissions, Fourth Quarter 2009.

Month	Number	Percent
October	50	31
November	54	34
December	55	35
Total	159	100

Admission Demographics, Fourth Quarter 2009.

Race/ethnicity and age	Gender		Total	
	Female	Male	Number	Percent
African American				
13	2	7	9	6
14	1	15	16	10
15	11	17	28	18
16	7	21	28	18
17	6	31	37	23
18	0	2	2	1
Subtotal	27	93	120	75
Hispanic				
17	0	1	1	1
Subtotal	0	1	1	1
White				
12	0	2	2	1
14	1	4	5	3
15	0	4	4	3
16	2	10	12	8
17	4	11	15	9
Subtotal	7	31	38	24
Total	34	125	159	100

Admissions Profile for Fourth Quarter 2009 NCCDC Admittees.

Admissions	Youth			Admissions		
	Number	Percent	Cum. %	Number	Percent	Cum. %
Total	159	100%	100%	813	100%	100%
First admission	46	29%	29%	46	6%	6%
Multiple admissions	113	71%	71%	767	94%	94%
2 nd	19	12%	41%	38	5%	10%
3 rd	21	13%	54%	63	8%	18%
4 th	13	8%	62%	52	6%	24%
5 th	9	6%	68%	45	6%	30%
6 th	5	3%	71%	30	4%	34%
7 th	5	3%	74%	35	4%	38%
8 th	8	5%	79%	64	8%	46%
9 th	5	3%	82%	45	6%	51%
10 th	7	4%	87%	70	9%	60%
11 th	2	1%	88%	22	3%	63%
12 th	3	2%	90%	36	4%	67%
13 th	6	4%	94%	78	10%	77%
14 th	2	1%	95%	28	3%	80%
15 th	3	2%	97%	45	6%	86%
16 th	0	.	97%	0	.	86%
17 th	1	1%	97%	17	2%	88%
18 th	1	1%	98%	18	2%	90%
19 th	1	1%	99%	19	2%	92%
20 th	1	1%	99%	20	2%	95%
...	0	.	99%	0	.	95%
42 nd	1	1%	100%	42	5%	100%

Note: First admission means that, heretofore, a juvenile had never been admitted to Secure Detention, residential Level III, Level IV, Level V, or Division of Family Services (DFS) and Child Mental Health (CMH) programs that provide residential services. Included in the count of multiple admissions are those admitted to Secure Detention, residential Level III, Level IV, Level V, and DFS and CMH programs that provide residential services which are classified by DSCYF as crisis bed; mental health; residential group care; treatment center; residential Interagency Collaborative Team; residential treatment, mental health; and residential treatment, substance abuse.

**Admission Profile by Dispositional
Level for Fourth Quarter 2009 NCCDC Admittees.**

Admissions	Number and percent of youth							
	Sec. Det.		L. V		L. IV		L. III	
	N.	%	N.	%	N.	%	N.	%
Total	159	100	159	100	159	100	159	100
No prior admissions	65	41	121	76	98	62	54	34
Multiple admissions	94	59	38	24	61	38	105	66
2 nd	25	16	21	13	10	6	36	23
3 rd	30	19	11	7	21	13	26	16
4 th	13	8	5	3	2	1	15	9
5 th	10	6	0	.	6	4	12	8
6 th	9	6	0	.	8	5	4	3
7 th	2	1	0	.	6	4	4	3
8 th	3	2	1	1	3	2	5	3
9 th	0	.	0	.	3	2	1	1
10 th	1	1	0	.	0	.	2	1
11 th	0	.	0	.	0	.	0	.
12 th	1	1	0	.	1	1	0	.
13 th	0	.	0	.	1	1	0	.

Note: Included in the count of multiple admissions are those admitted to Secure Detention (Sec. Det.), Level III, Level IV, Level V, and Division of Family Services and Child Mental Health programs that provide residential services which are classified by DSCYF as crisis bed; mental health; residential group care; treatment center; residential Interagency Collaborative Team; residential treatment, mental health; and residential treatment, substance abuse.

Reading this table: This table shows that 59 percent of youth admitted to the New Castle County Detention Center during the fourth quarter of 2009 had prior admissions to secure detention, 24 percent to Level V, 38 percent to Level IV, and 66 percent to Level III. Thirty of the 65 youth without prior detention admissions had prior admissions to Levels III, IV and/or V.

Leading Charge at Admission, Fourth Quarter 2009.

Detained felonies and misdemeanors, 10 Del.C. § 1007(a)(2)	Total	Gender		Minority	
		F	M	W	M
Assault in a detention facility, causing injury	2	0	2	0	2
Assault in the second degree	1	0	1	0	1
Assault in the third degree	3	1	2	3	0
Burglary in the second degree	4	0	4	0	4
Burglary in the third degree	1	0	1	0	1
Burglary in the third degree, attempted	2	0	2	0	2
Distribution of a controlled substance within 300 feet of a park	2	0	2	0	2
Escape after conviction	2	1	1	0	2
Menacing, aggravated	1	1	0	0	1
Murder in the first degree	1	0	1	0	1
Possession of a deadly weapon by a person prohibited	1	0	1	0	1
Possession of a deadly weapon by a person prohibited, firearm	1	0	1	0	1
Possession of a deadly weapon during commission of a felony	8	1	7	4	4
Possession of a firearm during the commission of a felony	3	0	3	0	3
Possession of burglar's tools	2	0	2	1	1
Possession with intent to deliver narcotics	5	0	5	0	5
Possession with intent to deliver non-narcotics	3	0	3	1	2
Rape in the second degree	2	0	2	2	0
Receiving stolen property, felony	3	0	3	0	3
Reckless endangering in the first degree	2	0	2	1	1
Robbery in the first degree	13	2	11	4	9
Robbery in the first degree, attempted	2	0	2	0	2
Robbery in the second degree	3	0	3	0	3
Theft, felony	1	0	1	0	1
Theft, felony, attempted	2	0	2	0	2
Subtotal	70	6	64	16	54
Administrative violations and holds					
Administrative hold	4	4	0	0	4
Internal transfer	2	0	2	0	2
Subtotal	6	4	2	0	6
Violation of probation pursuant to 11 Del.C. § 4334					
Violation of probation	26	8	18	6	20
Subtotal	26	8	18	6	20

Leading Charge at Admission, Fourth Quarter 2009.

Detained admissions for charges not referenced in 10 Del.C. § 1007 Total	Gender		Minority	
	F	M	W	M
Breach of conditions of release, misdemeanor	2	1 1	0	2
Criminal contempt	2	2 0	1	1
Escape in the third degree	3	2 1	1	2
Falsely reporting an incident	1	1 0	1	0
Offensive touching	1	1 0	0	1
Possession of drug paraphernalia	2	0 2	0	2
Possession or use of narcotics	2	0 2	1	1
Receiving stolen property, misdemeanor	2	0 2	0	2
Resisting arrest	1	0 1	0	1
Shoplifting, misdemeanor	4	1 3	1	3
Theft, misdemeanor	3	0 3	2	1
Subtotal	23	8 15	7	16
Failure to appear, 10 Del.C. § 1007(a)(3)				
Failure to appear in court	8	5 3	1	7
Subtotal	8	5 3	1	7
Repeated failure to comply, 10 Del.C. § 1007(a)(4)				
Shoplifting, misdemeanor	1	1 0	0	1
Subtotal	1	1 0	0	1
Fugitive from another state, 11 Del. C. § 2513				
Administrative hold, fugitive from another state	1	0 1	0	1
Subtotal	1	0 1	0	1

Leading Charge at Admission, Fourth Quarter 2009.

Sentenced admissions pursuant to an adjudication	Total	Gender		Minority	
		F	M	W	M
Acquire or attempt to obtain a controlled substance by theft	1	0	1	1	0
Assault in the third degree	2	0	2	0	2
Burglary in the second degree	2	0	2	2	0
Criminal trespassing in the second degree	1	0	1	1	0
Possession of burglar's tools	1	0	1	0	1
Receiving stolen property, misdemeanor	1	0	1	0	1
Reckless endangering in the first degree	1	0	1	0	1
Shoplifting, misdemeanor	1	1	0	0	1
Theft, misdemeanor	1	0	1	0	1
Unauthorized use of a motor vehicle	1	0	1	1	0
Unlawful use of a credit card, felony	1	0	1	0	1
Violation of probation	11	1	10	3	8
Subtotal	24	2	22	8	16
Total	159	34	125	38	121

Crime Category at Admission, Fourth Quarter 2009.

Category	Number	Percent
Violent felony	57	36
Violent misdemeanor	7	4
Nonviolent felony	16	10
Nonviolent misdemeanor	35	22
Probation violation	37	23
Administrative hold/Aftercare revocation	7	4
Total	159	100

While 37 youth were admitted solely for a violation of probation (VOP), another 27 had a VOP and an arrest for another crime. A total of 64 youth were charged with a VOP.

Length of Stay on December 31, 2009.

LOS in intervals	<u>Youth</u>	<u>Length of Stay</u>		
	Number	Average	Median	Maximum
1 to 3 days	8	3	3	3
4 to 14 days	6	11	12	14
15 to 29 days	15	21	22	29
30 to 59 days	11	44	45	58
60 to 119 days	5	95	92	116
120 to 179 days	3	157	154	178
180 plus days	3	336	351	464
Summary	51	55	25	464

Legal Status by Average LOS on December 31, 2009.

	<u>Detained</u>		<u>Sentenced</u>		<u>Total</u>	
	No.	LOS	No.	LOS	No.	LOS
Family Court	27	23	11	44	38	29
30 days or less	22	12	6	19	28	13
31 days or more	5	71	5	74	10	73
Superior Court	13	133	0	.	13	133
120 days or less	8	54	0	.	8	54
121 days or more	5	260	0	.	5	260
Total	40	59	11	44	51	55

Youth's Involvement on December 31, 2009.

<u>Detained</u>	Number	LOS in days
Aftercare	10	50
Probation	2	257
Division of Child Mental Health	2	35
Family Court detainees	27	23
Superior Court detainees	13	133
<u>Sentenced</u>		
Division of Family Services	1	178
Division of Child Mental Health	1	38
Family Court	11	44
Superior Court	0	.

Population Demographics on December 31, 2009.

Race/ethnicity and age	Gender		Total	
	Female	Male	Number	Percent
African American				
13	1	2	3	6
14	1	4	5	10
15	3	4	7	14
16	2	10	12	24
17	0	14	14	27
Subtotal	7	34	41	80
White				
12	0	1	1	2
14	0	1	1	2
15	0	1	1	2
16	0	3	3	6
17	1	3	4	8
Subtotal	1	9	10	20
Total	8	43	51	100

Releases, Fourth Quarter 2009.

To whom released/program	Number	Percent	LOS in days	
			Mean	Max.
<u>Releases to the community</u>				
Community Services, Camelot, Non-Secure Detention	14	8	4	16
Community Services, Camelot, Shelter	5	3	9	16
Community Services, Moore Proactive Solutions, Non-Sec. Det.	2	1	9	12
Community Services, Peoples Place II, Non-Secure Detention	3	2	3	4
Community Services, Peoples Place II, Shelter	2	1	6	8
Community Services, Project Stay Free, Day Treatment	1	1	16	16
Community Services, Project Stay Free, Electronic Monitoring	6	3	13	30
Community Services, Project Stay Free, ICCP	1	1	16	16
Community Services, Psychiatric Children's Srv., M.S.T.	4	2	37	58
Community Services, VisionQuest, FCIM	1	1	49	49
Division of Family Services	1	1	40	40
Guardian	1	1	1	1
Parent	43	25	27	194
Relative	1	1	37	37
Total	85	49	20	194
<u>Releases to a secure placement</u>				
Child Mental Health, Coastal Harbor Treatment Center	1	1	1	1
Community Services, Chamberlain Academy High Impact	2	1	34	65
Community Services, Glen Mills Schools	3	2	15	23
Community Services, Mountain Manor Treatment Center	3	2	34	57
Community Services, Southwest Indiana	3	2	56	110
Community Services, Springfield Academy	3	2	32	47
Community Services, Today Inc.	1	1	54	54
Community Services, University Behavioral Center	2	1	42	70
Community Services, Youth Services Agency	4	2	27	46
Department of Correction, General Population	2	1	166	329
Department of Correction, YCOP	3	2	15	36
Pennsylvania Authorities	1	1	15	15
YRS, Ferris School for Boys	22	13	85	402
YRS, Grace Cottage	4	2	9	12
YRS, Mowlds Cottage	13	8	17	33
YRS, Snowden	17	10	44	110
YRS, Stevenson House Detention Center	4	2	10	20
Total	88	51	46	402
Total releases	173	100	33	402

Legal Status by Average LOS at Release, Fourth Quarter 2009.

	<u>Detained</u>		<u>Sentenced</u>		<u>Total</u>	
	No.	LOS	No.	LOS	No.	LOS
Family Court	60	15	109	38	169	30
30 days or less	54	6	54	16	108	11
31 days or more	6	102	55	60	61	64
Superior Court	0	.	4	159	4	159
120 days or less	0	.	2	21	2	21
121 days or more	0	.	2	298	2	298
Total	60	15	113	42	173	33

Crime Category at Release, Fourth Quarter 2009.

Category	Number	Percent	<u>LOS in days</u>	
			Mean	Maximum
Violent felony	58	34	46	402
Violent misdemeanor	14	8	41	123
Non-violent felony	17	10	34	68
Non-violent misdemeanor	41	23	23	76
Unclassified misdemeanor	2	1	59	110
Probation violation	38	22	21	70
Administrative hold/Aftercare revocation	3	2	15	28
Total	173	100	33	402