



STATE OF DELAWARE
EXECUTIVE DEPARTMENT
OFFICE OF MANAGEMENT AND BUDGET

To: John Frazer
From: Jorge Rodríguez-Labarca
Date: September 22, 2008
Subject: Second Quarter 2008 New Castle County Detention Center Status Report

On June 30, 2008, with a population of 67 the Detention Center was 5 percent over capacity. The capacity of 64 beds was exceeded by 3 youth.

Admissions: There were 244 admissions to the Detention Center during the second quarter of 2008.

Admission demographics: Of the 244 admissions, 57 were females and 187 were males. During the second quarter 177 African Americans, 9 Hispanics and 58 whites were admitted to the Detention Center.

Leading charges at admission: The most frequent leading charges at admission for the second quarter were violation of probation, 62; robbery in the first degree, 17; and failure to appear in court, 16. 82 youth, or 34 percent, were admitted to the Detention Center for violent felonies.

Length of stay: There were 67 youth at the Detention Center with an average length of stay (LOS) of 58 days and a maximum LOS of 313 days on June 30, 2008.

Of the 67 youth, there were 43 Family Court youth with an average LOS of 29 days, and 24 Superior Court youth with an average LOS of 109 days.

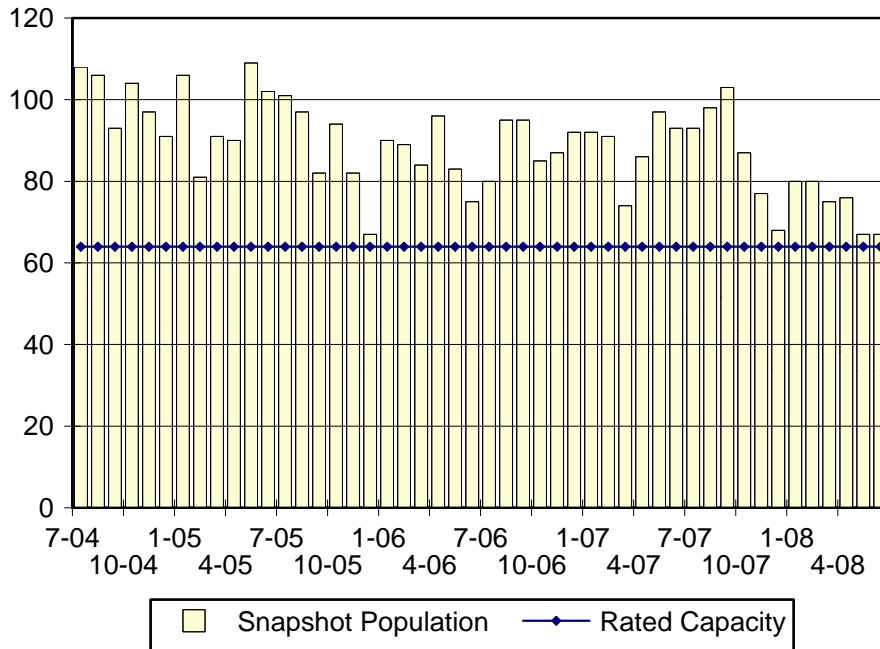
Snapshot demographics: Of the 67 youth on June 30, 5 were female and 62 were male. There were 54 African Americans, 1 Hispanic, and 12 whites.

Youth's status: There were 55 detained and 12 adjudicated youth on June 30, 2008.

Releases: 250 youth were released during the second quarter of 2008 with an average LOS of 32 days, and a maximum of 342 days.

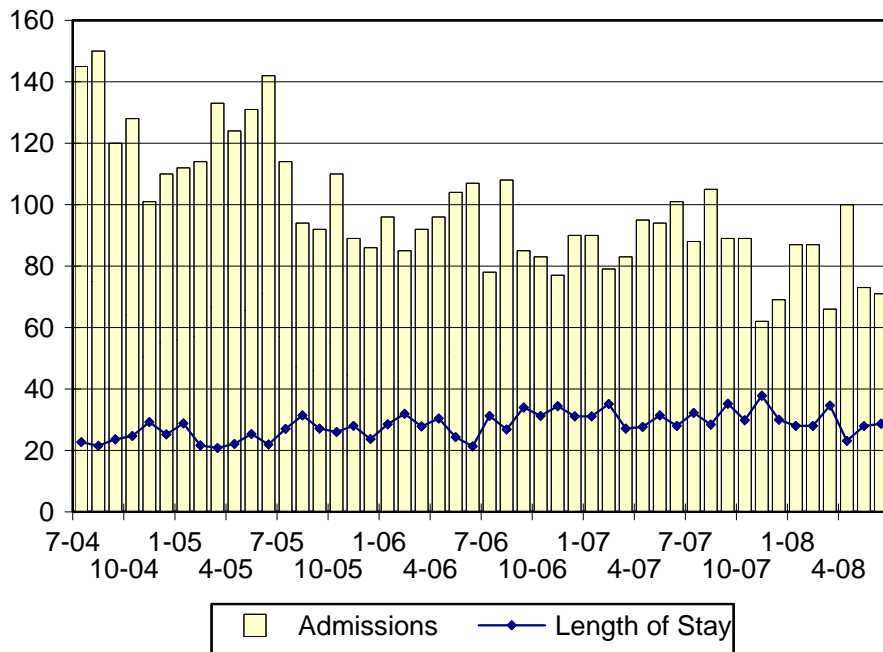


NCCDC Snapshot Population and Rated Capacity



Snapshot populations are taken at the end of any given month.

NCCDC Admissions and Time at NCCDC



Length of Stay: Average length of stay in days at the Detention Center given monthly admissions and populations.

Admissions, Second Quarter 2008.

Month	Number	Percent
April	100	41
May	73	30
June	71	29
Total	244	100

Admission Demographics, Second Quarter 2008.

Race/ethnicity and age	Gender		Total	
	Female	Male	Number	Percent
African American				
12	0	1	1	0
13	6	2	8	3
14	9	14	23	9
15	9	36	45	18
16	6	39	45	18
17	10	45	55	23
Subtotal	40	137	177	73
Hispanic				
15	1	4	5	2
16	0	1	1	0
17	0	3	3	1
Subtotal	1	8	9	4
White				
13	3	1	4	2
14	2	1	3	1
15	0	12	12	5
16	5	14	19	8
17	6	13	19	8
18	0	1	1	0
Subtotal	16	42	58	24
Total	57	187	244	100

Admissions Profile for Second Quarter 2008 NCCDC Admittees.

Admissions	Youth			Admissions		
	Number	Percent	Cum. %	Number	Percent	Cum. %
Total	244	100%	100%	1,133	100%	100%
First admission	62	25%	25%	62	5%	5%
Multiple admissions	182	75%	75%	1,071	95%	95%
2 nd	40	16%	42%	80	7%	13%
3 rd	32	13%	55%	96	8%	21%
4 th	23	9%	64%	92	8%	29%
5 th	13	5%	70%	65	6%	35%
6 th	20	8%	78%	120	11%	45%
7 th	5	2%	80%	35	3%	49%
8 th	6	2%	82%	48	4%	53%
9 th	12	5%	87%	108	10%	62%
10 th	7	3%	90%	70	6%	68%
11 th	5	2%	92%	55	5%	73%
12 th	5	2%	94%	60	5%	79%
13 th	2	1%	95%	26	2%	81%
14 th	3	1%	96%	42	4%	85%
15 th	1	0%	97%	15	1%	86%
16 th	1	0%	97%	16	1%	87%
17 th	0	.	97%	0	.	87%
18 th	1	0%	98%	18	2%	89%
19 th	2	1%	98%	38	3%	92%
20 th	1	0%	99%	20	2%	94%
21 st	1	0%	99%	21	2%	96%
22 nd	1	0%	100%	22	2%	98%
23 rd	0	.	100%	0	.	98%
24 th	1	0%	100%	24	2%	100%

Note: First admission means that, heretofore, a juvenile had never been admitted to Secure Detention, residential Level III, Level IV, Level V, or Division of Family Services (DFS) and Child Mental Health (CMH) programs that provide residential services. Included in the count of multiple admissions are those admitted to Secure Detention, residential Level III, Level IV, Level V, and DFS and CMH programs that provide residential services which are classified by DSCYF as crisis bed; mental health; residential group care; treatment center; residential Interagency Collaborative Team; residential treatment, mental health; and residential treatment, substance abuse.

**Admission Profile by Dispositional
Level for Second Quarter 2008 NCCDC Admittees.**

Admissions	Number and percent of youth							
	Sec. Det.		L. V		L. IV		L. III	
	N.	%	N.	%	N.	%	N.	%
Total	244	100	244	100	244	100	244	100
No prior admissions	91	37	211	86	139	57	109	45
Multiple admissions	153	63	33	14	105	43	135	55
2 nd	66	27	23	9	22	9	43	18
3 rd	32	13	5	2	24	10	41	17
4 th	23	9	2	1	16	7	18	7
5 th	12	5	1	0	16	7	12	5
6 th	9	4	2	1	11	5	10	4
7 th	1	0	0	.	6	2	2	1
8 th	5	2	0	.	2	1	4	2
9 th	3	1	0	.	5	2	1	0
10 th	1	0	0	.	1	0	0	.
11 th	1	0	0	.	1	0	0	.
12 th	0	.	0	.	0	.	2	1
13 th	0	.	0	.	0	.	1	0
14 th	0	.	0	.	0	.	0	.
15 th	0	.	0	.	0	.	1	0
16 th	0	.	0	.	1	0	0	.

Note: Included in the count of multiple admissions are those admitted to Secure Detention (Sec. Det.), Level III, Level IV, Level V, and Division of Family Services and Child Mental Health programs that provide residential services which are classified by DSCYF as crisis bed; mental health; residential group care; treatment center; residential Interagency Collaborative Team; residential treatment, mental health; and residential treatment, substance abuse.

Reading this table: This table shows that 63 percent of youth admitted to the New Castle County Detention Center during the second quarter of 2008 had prior admissions to secure detention, 14 percent to Level V, 43 percent to Level IV, and 55 percent to Level III. Thirty-seven of the 91 youth without prior detention admissions had prior admissions to Levels III, IV and/or V.

Leading Charge at Admission, Second Quarter 2008.

Detained felonies and misdemeanors, 10 Del.C. § 1007(a)(2)	Total	Gender		Minority	
		F	M	W	M
Arson in the second degree	1	0	1	1	0
Assault in detention facility, causing injury	1	0	1	0	1
Assault in the second degree	3	1	2	2	1
Assault in the third degree	7	3	4	2	5
Burglary in the second degree	8	0	8	2	6
Burglary in the third degree	2	0	2	0	2
Carjacking in the first degree, class B felony	1	0	1	0	1
Carrying a concealed dangerous instrument	1	0	1	1	0
Carrying a concealed deadly weapon	1	0	1	0	1
Criminal mischief, class G felony	1	0	1	1	0
Distribution of a controlled substance within 300 feet of a park	1	0	1	0	1
Escape after conviction	1	1	0	1	0
Escape in the second degree	3	3	0	1	2
Menacing, aggravated	1	0	1	0	1
Murder in the first degree	1	0	1	0	1
Obtain a controlled substance by robbery, burglary or theft	1	1	0	1	0
Possession of a deadly weapon by a person prohibited	2	0	2	1	1
Possession of a deadly weapon by a person prohibited, firearm	2	0	2	0	2
Possession of a deadly weapon during the commission of a felony	11	7	4	0	11
Possession of a firearm during the commission of a felony	4	0	4	0	4
Possession with intent to deliver a schedule III, IV, or V narcotic	1	0	1	0	1
Possession with intent to deliver narcotics	9	1	8	1	8
Possession with intent to deliver non-narcotics	5	1	4	0	5
Possession with intent to deliver prescription drugs	2	0	2	2	0
Rape in the second degree	1	0	1	1	0
Receiving stolen property, felony	3	0	3	1	2
Riot	1	1	0	0	1
Robbery in the first degree	17	1	16	2	15
Robbery in the first degree, attempted	2	0	2	0	2
Robbery in the second degree	3	1	2	2	1
Tampering with physical evidence	1	0	1	1	0
Terroristic threatening, felony	1	0	1	0	1
Trafficking in cocaine from 10 to less than 50 grams	1	0	1	1	0
Trafficking in illegal drugs from 2.5 to less than 10 grams	2	0	2	1	1
Trafficking in marijuana from 5 to less than 100 pounds	1	1	0	1	0
Unlawful sexual contact in the second degree	1	0	1	1	0
Subtotal	104	22	82	27	77

Leading Charge at Admission, Second Quarter 2008.

Detained admissions for charges not referenced in 10 Del.C. § 1007	Total	Gender		Minority	
		F	M	W	M
Breach of conditions of release, misdemeanor	2	1	1	0	2
Conspiracy in the third degree	1	0	1	0	1
Criminal contempt	1	0	1	1	0
Criminal impersonation	2	0	2	1	1
Criminal mischief, unclassified misdemeanor	1	0	1	0	1
Disorderly conduct	1	0	1	0	1
Escape in the third degree	5	0	5	1	4
Hindering prosecution	1	0	1	0	1
Menacing	1	0	1	0	1
Offensive touching	4	1	3	0	4
Possession or use of narcotics	1	0	1	0	1
Shoplifting, misdemeanor	1	1	0	0	1
Terroristic threatening, misdemeanor	5	3	2	1	4
Theft, misdemeanor	2	0	2	1	1
Theft, misdemeanor, attempted	1	0	1	0	1
Unlawful use of a credit card, misdemeanor	1	0	1	1	0
Subtotal	30	6	24	6	24
Administrative violations and holds					
Administrative hold	2	0	2	1	1
Administrative hold, Aftercare revocation	1	1	0	1	0
Internal transfer	1	1	0	0	1
Operation Safe Streets probation or Aftercare revocation	1	0	1	0	1
Subtotal	5	2	3	2	3
Violation of probation pursuant to 11 Del.C. § 4334					
Violation of probation	33	9	24	10	23
Subtotal	33	9	24	10	23
Failure to appear, 10 Del.C. § 1007(a)(3)					
Capias	1	0	1	0	1
Failure to appear in court	16	5	11	5	11
Subtotal	17	5	12	1	16

Leading Charge at Admission, Second Quarter 2008.

	Total	Gender		Minority	
		F	M	W	M
Repeated failure to comply					
Unauthorized use of a motor vehicle	1	0	1	0	1
Violation of probation	2	1	1	1	1
Subtotal	3	1	2	1	2
Sentenced admissions pursuant to an adjudication					
Administrative hold, Aftercare revocation	1	0	1	0	1
Assault in the second degree	1	1	0	0	1
Assault in the third degree	3	2	1	0	3
Criminal contempt	1	0	1	0	1
Criminal mischief, unclassified misdemeanor	1	0	1	0	1
Driving without a license	1	0	1	0	1
Drug Court violation	7	1	6	3	4
Escape in the third degree	1	0	1	0	1
Internal transfer	1	1	0	0	1
Offensive touching, attempted	1	0	1	1	0
Possession of a deadly weapon during the commission of a felony	1	0	1	0	1
Possession of a firearm during the commission of a felony	1	0	1	0	1
Possession or use of a non-narcotic	1	0	1	0	1
Possession or use of narcotics	1	0	1	0	1
Reckless endangering in the second degree	1	0	1	1	0
Robbery in the second degree	2	0	2	0	2
Violation of probation	27	6	21	6	21
Subtotal	52	11	41	11	41
Total	244	57	187	58	186

Crime Category at Admission, Second Quarter 2008.

<u>Category</u>	<u>Number</u>	<u>Percent</u>
Violent felony	82	34
Violent misdemeanor	19	8
Nonviolent felony	19	8
Nonviolent misdemeanor	46	19
Traffic misdemeanor	1	0
Probation violation	62	25
Administrative hold/Aftercare revocation	7	3
Drug Court violation	7	3
Unclassified misdemeanor	1	0
Total	244	100

While 62 youth were admitted solely for a violation of probation (VOP), another 39 had a VOP and an arrest for another crime. A total of 101 youth were charged with a VOP.

Length of Stay on June 30, 2008.

<u>LOS in intervals</u>	<u>Youth</u>	<u>Length of Stay</u>		
	<u>Number</u>	<u>Average</u>	<u>Median</u>	<u>Maximum</u>
1 to 3 days	3	2	1	3
4 to 14 days	14	9	9	14
15 to 29 days	13	21	20	26
30 to 59 days	14	39	38	55
60 to 119 days	10	78	81	106
120 to 179 days	12	151	149	179
180 plus days	1	313	313	313
Summary	67	58	32	313

Legal Status by Average LOS on June 30, 2008.

	<u>Detained</u>		<u>Sentenced</u>		<u>Total</u>	
	<u>No.</u>	<u>LOS</u>	<u>No.</u>	<u>LOS</u>	<u>No.</u>	<u>LOS</u>
Family Court	31	33	12	17	43	29
30 days or less	18	13	9	11	27	13
31 days or more	13	61	3	35	16	57
Superior Court	24	109	0	.	24	109
120 days or less	12	53	0	.	12	53
121 days or more	12	165	0	.	12	165
Total	55	66	12	17	67	58

Youth's Involvement on June 30, 2008.

Detained	Number	LOS in days
Aftercare	32	80
Probation	6	40
Serious Juvenile Offender and Comprehensive Aftercare Program	7	104
Division of Family Services	3	145
Division of Child Mental Health	1	55
Family Court detainees	31	33
Superior Court detainees	24	109
Sentenced		
Division of Family Services	1	40
Division of Child Mental Health	2	21
Family Court	12	17
Superior Court	0	.

Population Demographics on June 30, 2008.

Race/ethnicity and age	Gender		Total	
	Female	Male	Number	Percent
African American				
12	0	1	1	1
13	1	0	1	1
14	0	2	2	3
15	1	15	16	24
16	0	15	15	22
17	2	17	19	28
Subtotal	4	50	54	81
Hispanic				
17	0	1	1	0
Subtotal	0	1	1	0
White				
13	0	1	1	1
15	0	2	2	3
16	1	5	6	9
17	0	3	3	4
Subtotal	1	11	12	18
Total	5	62	67	100

Releases, Second Quarter 2008.

To whom released/program	Number	Percent	LOS in days	
			Mean	Max.
Releases to the community				
Community Services, Abraxas electronic monitoring	1	0	11	11
Community Services, Aftercare	2	1	64	96
Community Services, Camelot non-secure detention	23	9	4	22
Community Services, Camelot shelter	5	2	8	21
Community Services, Peoples Place II	1	0	4	4
Community Services, Peoples Place II non-secure det.	12	5	4	19
Community Services, Probation	2	1	19	22
Community Services, Project Stay Free day treatment	4	2	17	57
Community Services, Project Stay Free electronic mon.	13	5	19	55
Community Services, Project Stay Free ICCP	3	1	17	38
Community Services, Providence non-secure detention	6	2	2	3
Community Services, VisionQuest FCIM	1	0	8	8
Division of Family Services	1	0	2	2
Division of Family Services, Child Inc. shelter	1	0	13	13
Guardian	2	1	15	27
Parent	67	27	29	300
Relative	4	2	35	109
Releases to the community subtotal	148	59	19	300
Releases to a secure placement				
Child Mental Health, Middletown Manor RTC	1	0	57	57
Community Services, Cove PREP	1	0	19	19
Community Services, Diversified Treatment Alternatives	1	0	56	56
Community Services, Glen Mills Schools	1	0	45	45
Community Services, Southwest Indiana	4	2	35	45
Community Services, Summit Academy	3	1	40	52
Community Services, Today Inc. short term drug abuse	1	0	8	8
Community Services, VisionQuest Boot Camp	3	1	24	33
Community Services, VisionQuest Lady of the Lakes	1	0	35	35
Community Services, VisionQuest Madalyn	1	0	13	13
Community Services, Youth Services Agency	4	2	40	91
Department of Correction	6	2	164	281
Department of Correction, YCOP	7	3	212	342
New Jersey Authorities	1	0	19	19
YRS, Ferris School for Boys	18	7	48	261
YRS, Grace Cottage	16	6	16	50
YRS, Mowlds Cottage	15	6	13	46
YRS, Snowden	17	7	28	101
YRS, Stevenson House Detention Center	1	0	4	4
Releases to a secure placement subtotal	102	41	49	342
Total releases	250	100	32	342

Legal Status by Average LOS at Release, Second Quarter 2008.

	<u>Detained</u>		<u>Sentenced</u>		<u>Total</u>	
	No.	LOS	No.	LOS	No.	LOS
Family Court	109	13	127	31	236	23
30 days or less	98	6	85	12	183	9
31 days or more	11	77	42	70	53	71
Superior Court	12	164	2	280	14	181
120 days or less	4	49	0	.	4	49
121 days or more	8	222	2	280	10	233
Total	121	28	129	35	250	32

Crime Category at Release, Second Quarter 2008.

Category	Number	Percent	<u>LOS in days</u>	
			Mean	Maximum
Violent felony	97	39	56	342
Violent misdemeanor	17	7	8	36
Non-violent felony	18	7	45	281
Non-violent misdemeanor	42	17	14	67
Traffic misdemeanor	7	3	26	50
Unclassified misdemeanor	3	1	11	23
Probation violation	56	22	9	43
Drug Court violation	7	3	12	35
Administrative hold/Aftercare revocation	3	1	17	18
Total	250	100	32	342