



STATE OF DELAWARE  
EXECUTIVE DEPARTMENT  
OFFICE OF MANAGEMENT AND BUDGET

To: John Frazer  
From: Jorge Rodríguez-Labarca  
Date: March 20, 2007  
Subject: Fourth Quarter 2006 New Castle County Detention Center Status Report

---

On December 31, 2006, with a population of 92 the Detention Center was 44 percent over capacity. The capacity of 64 beds was exceeded by 28 youth.

*Admissions:* There were 252 admissions to the Detention Center during the fourth quarter of 2006.

*Admission demographics:* Of the 252 admissions, 58 were females and 194 were males. During the fourth quarter 190 African Americans, 7 Hispanics and 55 whites were admitted to the Detention Center.

*Leading charges at admission:* The most frequent leading charges at admission for the fourth quarter were violation of probation, 56; failure to appear in court, 23; and robbery in the first degree, 18. 78 youth, or 31 percent, were admitted to the Detention Center for violent felonies.

*Length of stay:* On December 31, there were 92 youth at the Detention Center with an average length of stay (LOS) of 58 days and a maximum LOS of 330 days.

Of the 92 youth, there were 65 Family Court youth with an average LOS of 36 days, and 27 Superior Court youth with an average LOS of 112 days.

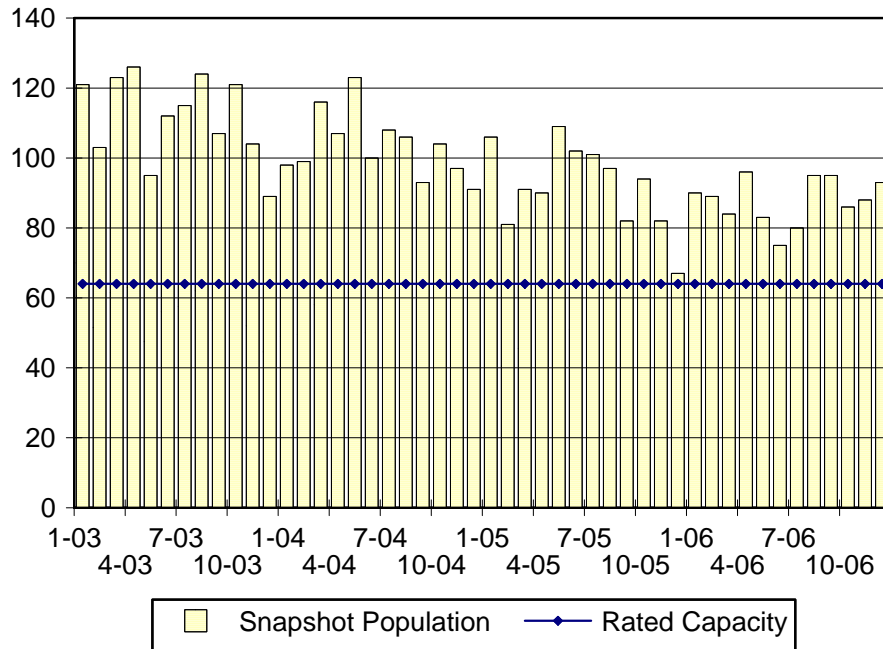
*Snapshot demographics:* Of the 92 youth on December 31, eight were female and 84 were male. There were 70 African Americans, 17 whites and five Hispanic.

*Youth's status:* On December 31, 2006, there were 81 detained and 11 adjudicated youth.

*Releases:* 253 youth were released during the fourth quarter of 2006 with an average LOS of 30 days, and a maximum of 243 days.

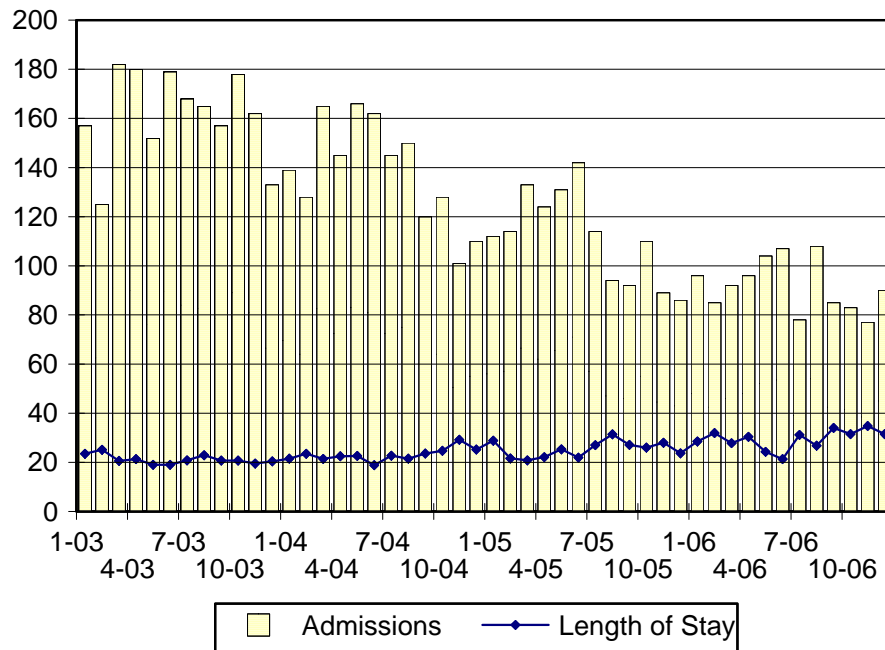


### NCCDC Snapshot Population and Rated Capacity



Snapshot populations are taken at the end of any given month.

### NCCDC Admissions and Time at NCCDC



Length of Stay: Average length of stay in days at the Detention Center given monthly admissions and populations.

## Admissions, Fourth Quarter 2006.

Month	Number	Percent
October	84	33
November	77	31
December	91	36
Total	252	100

## Admission Demographics, Fourth Quarter 2006.

Race/ethnicity and age	Gender		Total	
	Female	Male	Number	Percent
African American				
12	0	2	2	1
13	2	10	12	5
14	8	23	31	12
15	8	23	31	12
16	11	39	50	20
17	11	51	62	25
18	0	2	2	1
Subtotal	40	150	190	75
Hispanic				
15	0	2	2	1
16	0	2	2	1
17	0	3	3	1
Subtotal	0	7	7	3
White				
14	1	5	6	2
15	5	7	12	5
16	5	16	21	8
17	6	8	14	6
18	1	1	2	1
Subtotal	18	37	55	22
Total	58	194	252	100

### Admissions Profile for Fourth Quarter 2006 NCCDC Admittees.

Admissions	Youth			Admissions		
	Number	Percent	Cum. %	Number	Percent	Cum. %
Total	252	100%	100%	1,287	100%	100%
First admission	67	27%	27%	67	5%	5%
Multiple admissions	185	73%	73%	1,220	95%	95%
2 <sup>nd</sup>	37	15%	41%	74	6%	11%
3 <sup>rd</sup>	21	8%	50%	63	5%	16%
4 <sup>th</sup>	23	9%	59%	92	7%	23%
5 <sup>th</sup>	15	6%	65%	75	6%	29%
6 <sup>th</sup>	15	6%	71%	90	7%	36%
7 <sup>th</sup>	14	6%	76%	98	8%	43%
8 <sup>th</sup>	12	5%	81%	96	8%	50%
9 <sup>th</sup>	10	4%	85%	90	7%	58%
10 <sup>th</sup>	11	4%	89%	110	9%	66%
11 <sup>th</sup>	5	2%	91%	55	4%	70%
12 <sup>th</sup>	1	0%	92%	12	1%	71%
13 <sup>th</sup>	4	2%	93%	52	4%	75%
14 <sup>th</sup>	3	1%	94%	42	3%	79%
15 <sup>th</sup>	3	1%	96%	45	4%	82%
16 <sup>th</sup>	1	0%	96%	16	1%	84%
17 <sup>th</sup>	1	0%	96%	17	1%	85%
18 <sup>th</sup>	3	1%	98%	54	4%	89%
19 <sup>th</sup>	1	0%	98%	19	1%	91%
20 <sup>th</sup>	1	0%	98%	20	2%	92%
21 <sup>st</sup>	0	.	98%	0	.	92%
22 <sup>nd</sup>	0	.	98%	0	.	92%
23 <sup>rd</sup>	2	1%	99%	46	4%	96%
24 <sup>th</sup>	1	0%	100%	24	2%	98%
25 <sup>th</sup>	0	.	100%	0	.	98%
26 <sup>th</sup>	0	.	100%	0	.	98%
27 <sup>th</sup>	0	.	100%	0	.	98%
28 <sup>th</sup>	0	.	100%	0	.	98%
29 <sup>th</sup>	0	.	100%	0	.	98%
30 <sup>th</sup>	1	0%	100%	30	2%	100%

Note: First admission means that, heretofore, a juvenile had never been admitted to Secure Detention, Level III Residential, Level IV, Level V, or Division of Family Services (DFS) and Child Mental Health (CMH) programs that provide residential services. Included in the count of multiple admissions are those admitted to Secure Detention, Level III Residential, Level IV, Level V, and DFS and CMH programs that provide residential services which are classified by DSCYF as crisis bed; mental health; residential group care; treatment center; residential Interagency Collaborative Team; residential treatment, mental health; and residential treatment, substance abuse.

**Admission Profile by Dispositional  
Level for Fourth Quarter 2006 NCCDC Admittees.**

Admissions	Number and percent of youth							
	Sec. Det.		L. V		L. IV		L. IIIR	
	N.	%	N.	%	N.	%	N.	%
Total	252	100	252	100	252	100	252	100
No prior admissions	83	33	155	62	149	59	87	35
Multiple admissions	169	67	97	38	103	41	165	65
2 <sup>nd</sup>	62	25	52	21	37	15	46	18
3 <sup>rd</sup>	30	12	22	9	38	15	37	15
4 <sup>th</sup>	24	10	17	7	11	4	32	13
5 <sup>th</sup>	19	8	5	2	6	2	16	6
6 <sup>th</sup>	15	6	1	0	6	2	10	4
7 <sup>th</sup>	5	2	0	.	4	2	12	5
8 <sup>th</sup>	5	2	0	.	0	.	5	2
9 <sup>th</sup>	3	1	0	.	0	.	4	2
10 <sup>th</sup>	3	1	0	.	0	.	2	1
11 <sup>th</sup>	1	0	0	.	0	.	1	0
12 <sup>th</sup>	1	0	0	.	0	.	0	.
13 <sup>th</sup>	1	0	0	.	1	0	0	.

Note: Included in the count of multiple admissions are those admitted to Secure Detention (Sec. Det.), Level III Residential (L. IIIR), Level IV, Level V, and Division of Family Services and Child Mental Health programs that provide residential services which are classified by DSCYF as crisis bed; mental health; residential group care; treatment center; residential Interagency Collaborative Team; residential treatment, mental health; and residential treatment, substance abuse.

Reading this table: This table shows that 67 percent of youth admitted to the New Castle County Detention Center during the fourth quarter of 2006 had prior admissions to secure detention, 38 percent to Level V, 41 percent to Level IV, and 65 percent to Level IIIR. Twenty-seven of the 83 youth without prior detention admissions had prior admissions to Levels IIIR, IV and/or V.

### Leading Charge at Admission, Fourth Quarter 2006.

Detained felonies and misdemeanors, 10 Del.C. § 1007(a)(2)	
Aggravated act of intimidation	1
Arson in the first degree	3
Assault in detention facility, causing injury	1
Assault in the second degree	2
Assault in the third degree	5
Burglary in the second degree	6
Burglary in the second degree, attempted	1
Burglary in the third degree	3
Carrying a concealed deadly weapon	1
Cruelty to animals, class F felony	1
Distribution of a controlled substance within 1,000 feet of a school	2
Forgery in the first degree	1
Menacing, aggravated	2
Murder in the first degree	2
Possession of a deadly weapon by a person prohibited	1
Possession of a deadly weapon by a person prohibited, firearm	2
Possession of a deadly weapon during the commission of a felony	6
Possession of a firearm during the commission of a felony	7
Possession of a weapon in a safe school zone	1
Possession with intent to deliver narcotics	15
Possession with intent to deliver non-narcotics	1
Rape in the second degree	1
Receiving stolen property, felony	3
Reckless endangering in the first degree	1
Robbery in the first degree	18
Robbery in the first degree, attempted	1
Robbery in the second degree	5
Theft, felony	1
Trafficking in cocaine from 10 to 50 grams	1
Subtotal	95

---

 Leading Charge at Admission, Fourth Quarter 2006.
 

---

<hr/> Failure to appear, 10 Del.C. § 1007(a)(3)	
Failure to appear in court	23
<hr/> Subtotal	
23	
<hr/> Detained admissions not pursuant to 10 Del.C. § 1007	
Breach of conditions of release, misdemeanor	5
Civil contempt, juvenile fails to pay fines	3
Criminal contempt	5
Criminal mischief, unclassified misdemeanor	3
Criminal mischief, class A misdemeanor	1
Disorderly conduct	2
Driving without a license	2
Escape in the third degree	7
Loitering	3
Menacing	1
Driving on the wrong side of the roadway	1
Offensive touching	4
Possession or use of a non-narcotic	1
Reckless burning or exploding	1
Resisting arrest	1
Shoplifting, misdemeanor	3
Terroristic threatening, misdemeanor	7
Theft, misdemeanor	2
Truancy, failure to attend school	3
Unauthorized use of a motor vehicle	1
<hr/> Subtotal	
56	
<hr/> Administrative violations and holds	
Administrative hold	4
Administrative hold, Aftercare revocation	1
Administrative hold, internal transfer	2
<hr/> Subtotal	
7	

### Leading Charge at Admission, Fourth Quarter 2006.

<u>Sentenced admissions pursuant to an adjudication</u>	
Assault in the third degree	2
Breach of conditions of release, misdemeanor	1
Burglary in the second degree	1
Criminal trespassing in the third degree	1
Disorderly conduct	1
Drug Court violation	1
Offensive touching	1
Possession with intent to deliver narcotics	1
Receiving stolen property, felony	1
Reckless burning or exploding	1
Shoplifting, felony	1
Theft, misdemeanor	1
Unauthorized use of a motor vehicle	1
Violation of curfew	1
Violation of probation	19
<u>Subtotal</u>	<u>34</u>
<u>Violation of probation pursuant to 11 Del.C. § 4334</u>	
Violation of probation	38
<u>Subtotal</u>	<u>38</u>
<u>Total</u>	<u>252</u>



### Crime Category at Admission, Fourth Quarter 2006.

Category	Number	Percent
Violent felony	78	31
Violent misdemeanor	14	6
Non-violent felony	16	6
Non-violent misdemeanor	66	26
Unclassified misdemeanor	6	2
Unclassified violation	5	2
Traffic misdemeanor	3	1
Drug Court violation	1	0
Probation violation	56	22
Administrative hold/Aftercare revocation	7	3
<b>Total</b>	<b>252</b>	<b>100</b>

While 56 youth were admitted solely for a violation of probation (VOP), another 21 had a VOP and an arrest for another crime. A total of 77 youth were charged with a VOP.

### Length of Stay on December 31, 2006.

LOS in intervals	Youth Length of Stay			
	Number	Average	Median	Maximum
1 to 3 days	7	2	1	3
4 to 14 days	20	9	9	14
15 to 29 days	15	22	20	29
30 to 59 days	15	44	43	59
60 to 119 days	22	83	81	116
120 to 179 days	9	155	165	178
180 plus days	4	247	234	330
<b>Summary</b>	<b>92</b>	<b>58</b>	<b>36</b>	<b>330</b>

### Legal Status by Average LOS on December 31, 2006.

	Detained		Sentenced		Total	
	No.	LOS	No.	LOS	No.	LOS
Family Court	55	35	10	44	65	36
30 days or less	37	12	4	14	41	12
31 days or more	18	82	6	63	24	77
Superior Court	26	104	1	330	27	112
120 days or less	17	66	0	.	17	66
121 days or more	9	175	1	330	10	190
<b>Total</b>	<b>81</b>	<b>57</b>	<b>11</b>	<b>70</b>	<b>92</b>	<b>58</b>

### Youth's Involvement on December 31, 2006.

Detained	Number	LOS in days
Aftercare	13	76
Child Mental Health	3	59
Division of Family Services	3	66
Serious Juvenile Offender and Comprehensive Aftercare Program	19	80
Family Court detainees	55	35
Superior Court detainees	26	104
<b>Sentenced</b>		
Aftercare	3	1377
Child Mental Health	1	330
Serious Juvenile Offender and Comprehensive Aftercare Program	5	109
Family Court	10	44
Superior Court	1	330

### Population Demographics on December 31, 2006.

Race/ethnicity and age	Gender		Total	
	Female	Male	Number	Percent
<b>African American</b>				
13	0	3	3	3
14	1	6	7	8
15	0	9	9	10
16	2	21	23	26
17	1	27	28	30
Subtotal	4	66	70	76
<b>Hispanic</b>				
14	0	1	1	1
15	0	2	2	2
16	0	1	1	1
17	0	1	1	1
Subtotal	0	5	5	5
<b>White</b>				
14	0	2	2	2
15	1	4	5	5
16	1	5	6	7
17	2	2	4	4
Subtotal	4	13	17	18
<b>Total</b>	<b>8</b>	<b>84</b>	<b>92</b>	<b>100</b>

Releases, Fourth Quarter 2006.

To whom released/program	Number	Percent	LOS in days	
			Mean	Max.
Releases to the community				
Community Services, Camelot, non-secure detention	33	13	3	35
Community Services, Child, Inc.	2	1	29	60
Community Services, Lead, Inc.	1	0	1	1
Community Services, Ministry of Caring	1	0	13	13
Community Services, P.C.S., Multisystemic Therapy	1	0	22	22
Community Services, Peoples Place II, non-secure det.	9	4	4	14
Community Services, Project Stay Free, ICCP	2	1	4	5
Community Services, Providence, non-secure detention	6	2	12	42
Community Services, VisionQuest, Community Based	1	0	8	8
Community Services, Project Stay Free, electronic mon.	16	6	22	128
Division of Family Services	9	4	8	30
Division of Family Services, Peoples Place II	1	0	2	2
Guardian	1	0	224	224
Parent	54	21	39	243
Releases to the community subtotal	137	54	23	243
Releases to a secure placement				
Community Services, Chamberlain Academy High Impact	1	0	60	60
Community Services, Glen Mills Schools	6	2	68	127
Community Services, Hennepin County Home School	1	0	56	56
Community Services, Mountain Manor Treatment Center	2	1	6	7
Community Services, Springfield Academy	6	2	58	222
Community Services, Summit Academy	5	2	52	118
Community Services, VisionQuest, Boot Camp	8	3	31	79
Community Services, Youth Services Agency	21	8	21	122
Department of Correction	4	2	104	219
Department of Correction, YCOP	5	2	153	147
YRS, Grace Cottage	8	1	139	219
YRS, Ferris School for Boys	21	8	53	120
YRS, Mowlds Cottage	10	4	21	38
YRS, Snowden Cottage	15	6	31	74
YRS, Stevenson House Detention Center	3	1	26	61
Releases to a secure placement subtotal	116	46	39	222
Total releases	253	100	30	243

---

Legal Status by Average LOS at Release, Fourth Quarter 2006.

---

	<u>Detained</u>		<u>Sentenced</u>		<u>Total</u>	
	No.	LOS	No.	LOS	No.	LOS
Family Court	112	13	128	34	240	24
30 days or less	102	4	81	13	183	8
31 days or more	10	102	47	70	57	76
Superior Court	11	134	2	185	13	142
120 days or less	5	80	0	.	5	80
121 days or more	6	180	2	185	8	181
Total	123	24	130	36	253	30

---

Crime Category at Release, Fourth Quarter 2006.

---

Category	Number	Percent	<u>LOS in days</u>	
			Mean	Maximum
Violent felony	86	34	53	243
Violent misdemeanor	26	10	15	117
Non-violent felony	21	8	33	190
Non-violent misdemeanor	63	25	19	120
Traffic misdemeanor	1	0	22	22
Unclassified misdemeanor	3	1	16	46
Unclassified violation	2	1	5	8
Probation violation	45	18	12	65
Drug Court violation	1	0	2	2
Administrative hold/Aftercare revocation	3	1	26	56
Non-Sentac	2	1	19	31
Total	253	100	30	243