



**State of Delaware
Executive Department
Office of Management and Budget**

To: John Frazer
From: Jorge Rodríguez-Labarca
Date: February 1, 2010
Subject: Fourth Quarter 2009 Mowlds Cottage Status Report

Admissions: There were 56 admissions during the fourth quarter of 2009.

Admission demographics: Thirty-nine African Americans and 17 whites were admitted during the fourth quarter.

Leading charges at admission: The most frequent leading charges at admission for the fourth quarter were: violation of probation, 16; and, administrative hold and burglary in the second degree, 6. Thirty percent, or 17 youth, were admitted for violent felonies.

Length of stay: On December 31, there were 20 Family Court youth at Mowlds Cottage with an average length of stay (LOS) of 21 days, a median LOS of 22 days, and a maximum LOS of 43 days.

Snapshot demographics: Of the 20 youth at Mowlds Cottage, there were sixteen African Americans and four whites.

Youth's status: Twenty youth were serving indefinite Family Court.

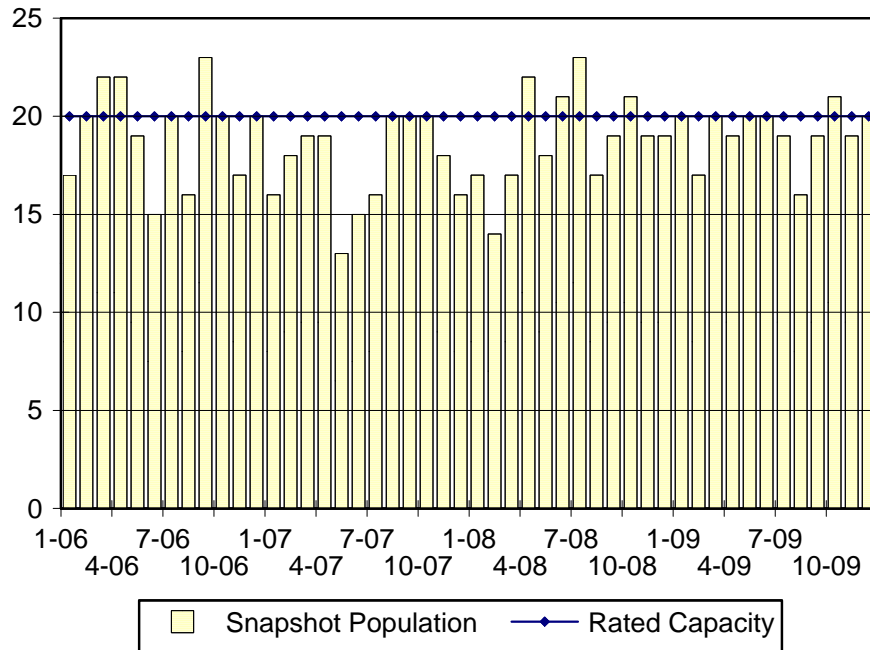
Releases: 57 youth were released during the fourth quarter of 2009 with an average LOS of 33 days and a maximum LOS of 51 days.



**Budget Development, Planning and Administration
Statistical Analysis Center**

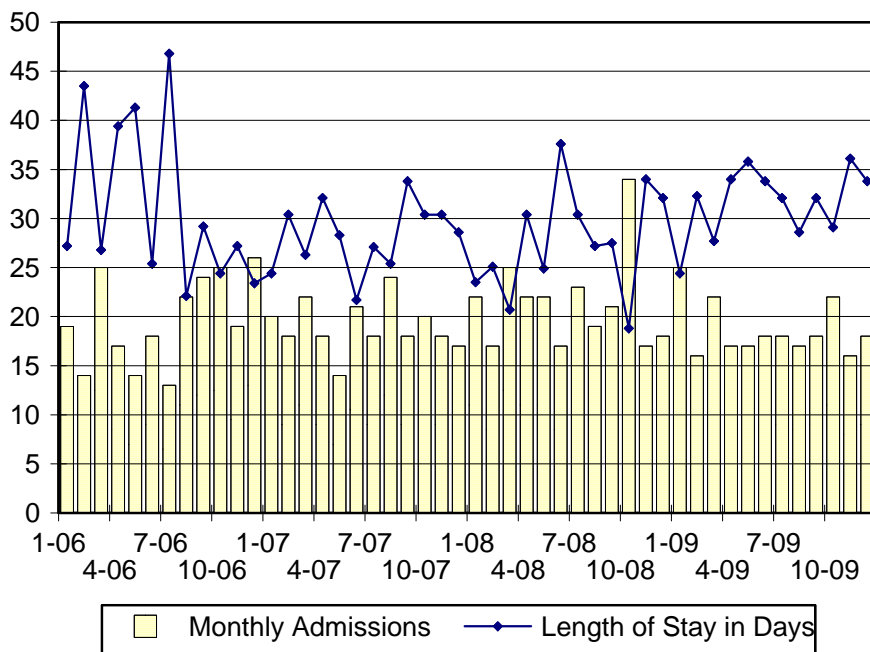
410 Federal Street • Suite 6 • Dover, DE 19901
Phone: (302) 739-4626 • Fax: (302) 739-4630 • www.omb.delaware.gov

Mowlds Cottage Snapshot Population and Rated Capacity



Snapshot populations are taken at the end of any given month.

Mowlds Cottage Admissions and Time Served



Length of Stay: Average time in days at the Mowlds for youth given monthly admissions and snapshot populations.

Admissions, Fourth Quarter 2009.

Month	Number	Percent
October	22	39
November	16	29
December	18	32
Total	56	100

Admission Demographics, Fourth Quarter 2009.

Race/ethnicity and age	Total	
	Number	Percent
African American		
14	1	2
15	6	11
16	8	14
17	16	29
18	8	14
Subtotal	39	70
White		
15	1	2
16	7	13
17	6	11
18	3	5
Subtotal	17	30
Total	56	100

Admissions Profile for
Fourth Quarter 2009 Mowlds Cottage Admittees

Admissions	Youth			Admissions		
	Number	Percent	Cum. %	Number	Percent	Cum. %
Total	56	100	100	433	100	100
First admission	0	.	.	0	.	.
Multiple admissions	56	100	100	433	100	100
2 nd	0	.	.	0	.	.
3 rd	1	2	2	2	0	0
4 th	6	11	13	18	4	5
5 th	14	25	38	56	13	18
6 th	4	7	45	20	5	22
7 th	6	11	55	36	8	30
8 th	5	9	64	35	8	39
9 th	4	7	71	32	7	46
10 th	3	5	77	27	6	52
11 th	1	2	79	10	2	55
12 th	2	4	82	22	5	60
13 th	1	2	84	12	3	62
14 th	0	.	84	0	.	62
15 th	0	.	84	0	.	62
16 th	2	4	88	30	7	69
17 th	2	4	91	32	7	77
18 th	2	4	95	34	8	85
...	0	.	95	0	.	85
22 nd	2	4	98	44	10	95
23 rd	1	2	100	23	5	100

Note: First admission means that, heretofore, a juvenile had never been admitted to Secure Detention, residential Level III, Level IV, Level V, or Division of Family Services (DFS) and Child Mental Health (CMH) programs that provide residential services. Included in the count of multiple admissions are those admitted to secure detention, residential Level III, Level IV, Level V, and DFS and CMH programs that provide residential services which are classified by DSCYF as crisis bed; mental health; residential group care; treatment center; residential Interagency Collaborative Team; residential treatment, mental health; and residential treatment, substance abuse.

**Admission Profile by Dispositional
Level for Fourth Quarter 2009 Mowlds Cottage Admittees**

Admissions	Number and percent of youth							
	Sec. Det.		L. V		L. IV		L. III	
	N.	%	N.	%	N.	%	N.	%
Total	56	100	56	100	56	100	56	100
No prior admissions	9	16	18	32	21	38	14	25
Multiple admissions	47	84	38	68	35	63	42	75
2 nd	17	30	4	7	5	9	10	18
3 rd	12	21	27	48	9	16	9	16
4 th	9	16	5	9	7	13	11	20
5 th	3	5	0	.	7	13	4	7
6 th	1	2	0	.	2	4	2	4
7 th	3	5	2	4	2	4	1	2
8 th	0	.	0	.	0	.	2	4
9 th	0	.	0	.	1	2	1	2
10 th	1	2	0	.	0	.	1	2
11 th	0	.	0	.	1	2	0	.
12 th	1	2	0	.	0	.	0	.
13 th	0	.	0	.	0	.	1	2
...	0	.	0	.	0	.	0	.
19 th	0	.	0	.	1	2	0	.

Note: Included in the count of multiple admissions are those admitted to Secure Detention (Sec. Det.), Level III, Level IV, Level V, and Division of Family Services and Child Mental Health programs that provide residential services which are classified by DSCYF as crisis bed; mental health; residential group care; treatment center; residential Interagency Collaborative Team; residential treatment, mental health; and residential treatment, substance abuse.

Reading this table: This table shows that 84 percent of youth admitted to Mowlds Cottage during the fourth quarter of 2009 had prior admissions to secure detention, 68 percent to Level V, 63 percent to Level IV, and 75 percent to Level III. All youth without prior Level IV admissions had prior admissions to secure detention, Levels III, and/or V.

Leading Charge at Admission, Fourth Quarter 2009.

Sentenced admissions	Total	Race	
		White	Minority
Administrative hold, aftercare revocation	1	0	1
Admimistrative hold, pending aftercare revocation	2	1	1
Administrative hold	6	2	4
Assault in the second degree	1	0	1
Assault in the third degree	1	0	1
Burglary in the second degree	6	3	3
Criminal impersonation	1	0	1
Distribution of a controlled substance within 300 feet of a park	1	0	1
Possession of a deadly weapon by a person prohibited	1	0	1
Possession of a deadly weapon by a person prohibited, firearm	4	2	2
Possession with intent to deliver narcotics	2	0	2
Possession with intent to deliver non-narcotics	3	1	2
Receiving stolen property, felony	1	0	1
Receiving stolen property, misdemeanor	1	0	1
Resisting arrest	1	0	1
Robbery in the first degree	4	1	3
Shoplifting, misdemeanor	2	1	1
Theft, misdemeanor	1	0	1
Unlawful sexual contact third degree	1	1	0
Violation of probation	16	5	11
Total	56	17	39

Crime Category at Admission, Fourth Quarter 2009.

Category	Count	Percent
Violent felony	17	30
Violent misdemeanor	2	4
Non-violent felony	6	11
Non-violent misdemeanor	6	11
Probation violation	16	29
Administrative hold/Aftercare revocation	9	16
Total	56	100

Length of Stay on December 31, 2009.

LOS in intervals	<u>Youth</u>	<u>Length of Stay</u>		
	Number	Average	Median	Maximum
1 to 3 days	0	.	.	.
4 to 14 days	6	7	4	14
15 to 29 days	9	20	22	29
30 to 59 days	5	38	37	43
60 to 119 days	0	.	.	.
120 to 179 days	0	.	.	.
180 plus days	0	.	.	.
Summary	20	21	22	43

Legal Status by Average LOS at Snapshot on December 31, 2009.

	<u>Administrative Hold</u>		<u>Sentenced</u>		<u>Total</u>	
	No.	LOS	No.	LOS	No.	LOS
Family Court	0	.	20	21	20	21
30 days or less	0	.	15	15	15	15
31 days or more	0	.	5	38	5	38
Superior Court	0	.	0	.	0	.
120 days or less	0	.	0	.	0	.
121 days or more	0	.	0	.	0	.
Total	0	.	20	21	20	21

Population Demographics on December 31, 2009.

Race/ethnicity and age	<u>Total</u>	
	Number	Percent
African American		
15	2	10
16	2	10
17	7	35
18	5	25
Subtotal	16	80
White		
16	2	10
17	1	5
18	1	5
Subtotal	4	20
Total	20	100

Youth's Involvement on December 31, 2009.

Sentenced	Number	LOS in days
Division of Child Mental Health	1	37
Division of Family Services	1	22
Aftercare	5	29
Probation Case	0	.
Serious Juvenile Offender and Comprehensive Aftercare Program	0	.
Indefinite sentences	20	21

Releases, Fourth Quarter 2009.

To whom released/program	Number	Percent	LOS in days	
			Mean	Maximum
Community Services, G4S Justice Services, E.M.	1	2	43	43
Community Services, Peoples Place II	2	4	33	36
Community Services, Project Stay Free, Day Treatment	3	5	27	43
Community Services, Psychiatric Children's Srv., M.S.T.	1	2	50	50
Community Services, VisionQuest, FCIM	2	4	40	42
Division of Family Services	2	4	20	36
Guardian	1	2	51	51
Parent	45	79	33	49
Total	57	100	33	51

Legal Status by Average LOS at Release, Fourth Quarter 2009.

	Administrative Hold		Sentenced		Total	
	No.	LOS	No.	LOS	No.	LOS
Family Court	9	6	48	38	57	33
30 days or less	9	6	10	23	19	15
31 days or more	0	.	38	42	38	42
Superior Court	0	.	0	.	0	.
120 days or less	0	.	0	.	0	.
121 days or more	0	.	0	.	0	.
Total	9	6	48	38	57	33

Crime Category at Release, Fourth Quarter 2009.

Category	Number	Percent	LOS in days	
			Mean	Maximum
Violent felony	14	25	37	45
Violent misdemeanor	2	4	40	43
Non-violent felony	8	14	43	51
Non-violent misdemeanor	8	14	38	43
Probation violation	16	28	37	50
Administrative hold/Aftercare revocation	9	16	6	15
Total	57	100	33	51