



**State of Delaware  
Executive Department  
Office of Management and Budget**

**To:** John Frazer  
**From:** Jorge Rodríguez-Labarca  
**Date:** November 17, 2009  
**Subject:** Third Quarter 2009 Mowlds Cottage Status Report

---

*Admissions:* There were 53 admissions during the third quarter of 2009.

*Admission demographics:* Forty-one African Americans and 12 whites were admitted during the third quarter.

*Leading charges at admission:* The most frequent leading charges at admission for the third quarter were: violation of probation, 16; administrative hold, 7; and robbery in the first degree, 5. Seventeen percent, or 9 youth, were admitted for violent felonies.

*Length of stay:* On September 30, there were 19 Family Court youth at Mowlds Cottage with an average length of stay (LOS) of 23 days, a median LOS of 21 days, and a maximum LOS of 42 days.

*Snapshot demographics:* Of the 19 youth at Mowlds Cottage, there were fifteen African Americans and four whites.

*Youth's status:* Nineteen youth were serving indefinite Family Court.

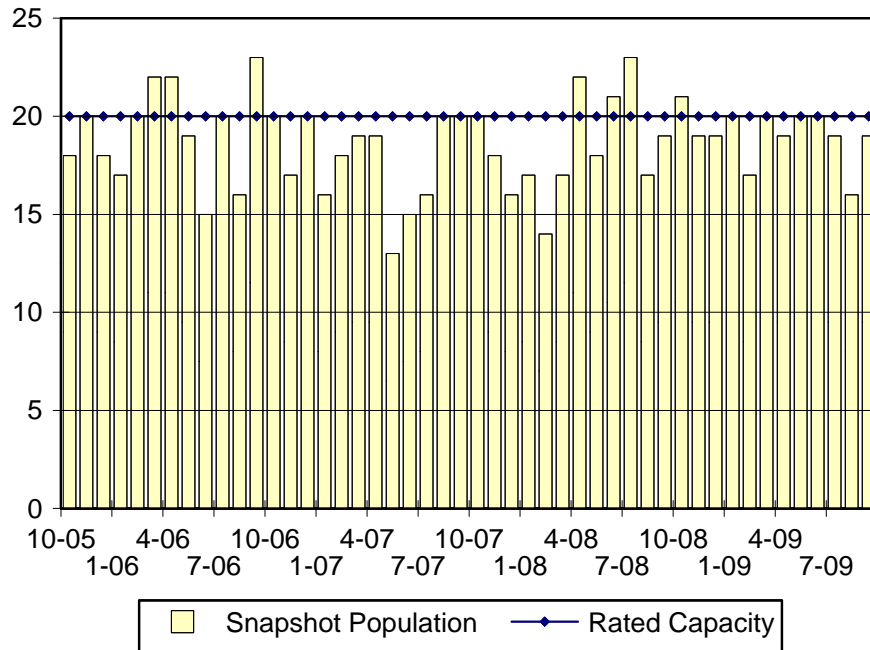
*Releases:* 54 youth were released during the third quarter of 2009 with an average LOS of 33 days and a maximum LOS of 50 days.



**Budget Development, Planning and Administration  
Statistical Analysis Center**

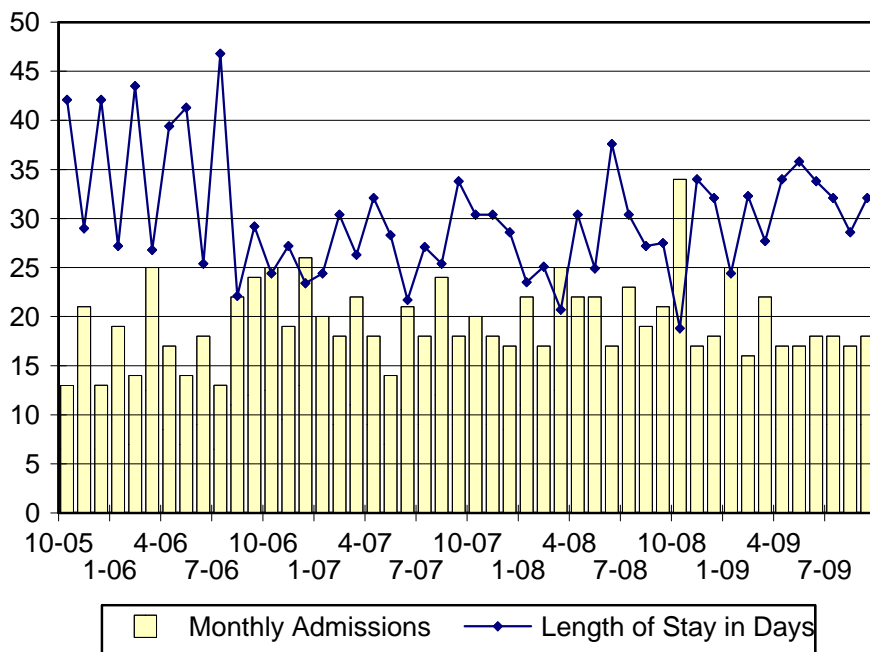
410 Federal Street • Suite 6 • Dover, DE 19901  
Phone: (302) 739-4626 • Fax: (302) 739-4630 • [www.omb.delaware.gov](http://www.omb.delaware.gov)

Mowlds Cottage Snapshot Population and Rated Capacity



Snapshot populations are taken at the end of any given month.

Mowlds Cottage Admissions and Time Served



Length of Stay: Average time in days at the Mowlds for youth given monthly admissions and snapshot populations.

Admissions, Third Quarter 2009.

Month	Number	Percent
July	18	34
August	17	32
September	18	34
Total	53	100

Admission Demographics, Third Quarter 2009.

Race/ethnicity and age	Total	
	Number	Percent
African American		
14	2	4
15	5	9
16	18	34
17	8	15
18	8	15
Subtotal	41	77
White		
15	1	2
16	2	4
17	6	11
18	3	6
Subtotal	12	23
Total	52	100

**Admissions Profile for  
Third Quarter 2009 Mowlds Cottage Admittees**

Admissions	<u>Youth</u>			<u>Admissions</u>		
	Number	Percent	Cum. %	Number	Percent	Cum. %
Total	53	100%	100%	447	100%	100%
First admission	0	.	.	0	.	.
Multiple admissions	53	100%	100%	447	100%	100%
2 <sup>nd</sup>	1	2%	2%	2	.	0%
3 <sup>rd</sup>	0	.	2%	0	.	0%
4 <sup>th</sup>	7	13%	15%	28	6%	7%
5 <sup>th</sup>	5	9%	25%	25	6%	12%
6 <sup>th</sup>	6	11%	36%	36	8%	20%
7 <sup>th</sup>	6	11%	47%	42	9%	30%
8 <sup>th</sup>	7	13%	60%	56	13%	42%
9 <sup>th</sup>	6	11%	72%	54	12%	54%
10 <sup>th</sup>	2	4%	75%	20	4%	59%
11 <sup>th</sup>	2	4%	79%	22	5%	64%
12 <sup>th</sup>	2	4%	83%	24	5%	69%
13 <sup>th</sup>	2	4%	87%	26	6%	75%
14 <sup>th</sup>	0	.	87%	0	.	75%
15 <sup>th</sup>	3	6%	92%	45	10%	85%
16 <sup>th</sup>	2	4%	96%	32	7%	92%
17 <sup>th</sup>	1	2%	98%	17	4%	96%
18 <sup>th</sup>	1	2%	100%	18	4%	100%

Note: First admission means that, heretofore, a juvenile had never been admitted to Secure Detention, residential Level III, Level IV, Level V, or Division of Family Services (DFS) and Child Mental Health (CMH) programs that provide residential services. Included in the count of multiple admissions are those admitted to secure detention, residential Level III, Level IV, Level V, and DFS and CMH programs that provide residential services which are classified by DSCYF as crisis bed; mental health; residential group care; treatment center; residential Interagency Collaborative Team; residential treatment, mental health; and residential treatment, substance abuse.

**Admission Profile by Dispositional  
Level for Third Quarter 2009 Mowlds Cottage Admittees**

Admissions	Number and percent of youth							
	Sec. Det.		L. V		L. IV		L. III	
	N.	%	N.	%	N.	%	N.	%
Total	53	100%	53	100%	53	100%	53	100%
No prior admissions	14	26%	19	36%	19	36%	7	13%
Multiple admissions	39	74%	34	64%	34	64%	46	87%
2 <sup>nd</sup>	12	23%	0	.	3	6%	2	4%
3 <sup>rd</sup>	7	13%	29	55%	9	17%	21	40%
4 <sup>th</sup>	11	21%	5	9%	4	8%	12	23%
5 <sup>th</sup>	3	6%	0	.	6	11%	4	8%
6 <sup>th</sup>	5	9%	0	.	7	13%	2	4%
7 <sup>th</sup>	0	.	0	.	3	6%	2	4%
8 <sup>th</sup>	0	.	0	.	1	2%	0	.
9 <sup>th</sup>	0	.	0	.	1	2%	2	4%
10 <sup>th</sup>	0	.	0	.	0	.	1	2%
11 <sup>th</sup>	0	.	0	.	0	.	0	.
12 <sup>th</sup>	1	2%	0	.	0	.	0	.

Note: Included in the count of multiple admissions are those admitted to Secure Detention (Sec. Det.), Level III, Level IV, Level V, and Division of Family Services and Child Mental Health programs that provide residential services which are classified by DSCYF as crisis bed; mental health; residential group care; treatment center; residential Interagency Collaborative Team; residential treatment, mental health; and residential treatment, substance abuse.

Reading this table: This table shows that 74 percent of youth admitted to Mowlds Cottage during the third quarter of 2009 had prior admissions to secure detention, 64 percent to Level V, 64 percent to Level IV, and 87 percent to Level III. All youth without prior Level IV admissions had prior admissions to secure detention, Levels III, and/or V.

Leading Charge at Admission, Third Quarter 2009.

Sentenced admissions	Total	Race	
		White	Minority
Administrative hold	7	1	6
Assault in the third degree	2	0	2
Burglary in the second degree	3	2	1
Burglary in the second degree, attempted	1	0	1
Burglary in the third degree, attempted	1	1	0
Carrying a concealed deadly weapon	2	0	2
Disorderly conduct	1	0	1
Escape in the third degree	2	0	2
Forgery in the second degree	1	1	0
Possession of a deadly weapon by a person prohibited	1	0	1
Possession of a deadly weapon by a person prohibited, firearm	4	1	3
Possession of drug paraphernalia	1	1	0
Possession or use of a non-narcotic	1	0	1
Receiving stolen property, felony	1	0	1
Resisting arrest	1	0	1
Robbery in the first degree	5	0	5
Theft of a firearm	1	1	0
Theft of a motor vehicle	1	0	1
Violation of curfew	1	0	1
Violation of probation	16	4	12
Total	53	12	41

Crime Category at Admission, Third Quarter 2009.

<u>Category</u>	<u>Count</u>	<u>Percent</u>
Violent felony	9	17
Violent misdemeanor	2	4
Non-violent felony	12	23
Non-violent misdemeanor	6	11
Unclassified violation	1	2
Probation violation	16	30
Administrative hold/Aftercare revocation	7	13
<b>Total</b>	<b>53</b>	<b>100</b>

Length of Stay on September 30, 2009.

<u>LOS in intervals</u>	<u>Youth</u>	<u>Length of Stay</u>		
	<u>Number</u>	<u>Average</u>	<u>Median</u>	<u>Maximum</u>
1 to 3 days	0	.	.	.
4 to 14 days	6	12	14	14
15 to 29 days	8	23	21	28
30 to 59 days	5	35	35	42
60 to 119 days	0	.	.	.
120 to 179 days	0	.	.	.
180 plus days	0	.	.	.
<b>Summary</b>	<b>19</b>	<b>23</b>	<b>21</b>	<b>42</b>

Legal Status by Average LOS at Snapshot on September 30, 2009.

	<u>Administrative Hold</u>		<u>Sentenced</u>		<u>Total</u>	
	<u>No.</u>	<u>LOS</u>	<u>No.</u>	<u>LOS</u>	<u>No.</u>	<u>LOS</u>
Family Court	0	.	19	23	19	23
30 days or less	0	.	15	19	15	19
31 days or more	0	.	4	37	4	37
Superior Court	0	.	0	.	0	.
120 days or less	0	.	0	.	0	.
121 days or more	0	.	0	.	0	.
<b>Total</b>	<b>0</b>	<b>.</b>	<b>19</b>	<b>23</b>	<b>19</b>	<b>23</b>

Population Demographics on September 30, 2009.

Race/ethnicity and age	<u>Total</u>	
	Number	Percent
African American		
14	2	11
15	3	16
16	6	32
17	3	16
18	1	5
Subtotal	15	79
White		
16	1	5
17	1	5
18	2	11
Subtotal	4	21
Total	19	100

Youth's Involvement on September 30, 2009.

Sentenced	Number	LOS in days
Division of Child Mental Health	0	.
Division of Family Services	0	.
Aftercare	14	24
Probation Case	0	.
Serious Juvenile Offender and Comprehensive Aftercare Program	3	21
Indefinite sentences	19	23



## Releases, Third Quarter 2009.

To whom released/program	Number	Percent	LOS in days	
			Mean	Maximum
AWOL status	1	2	3	3
Community Services, G4S Justice Services, E.M.	2	4	43	43
Community Services, Peoples Place II	1	2	43	43
Community Services, Project Stay Free ICCP	1	2	8	8
Community Services, Project Stay Free, Day Treatment	1	2	28	28
Division of Family Services	3	6	32	50
Division of Family Services, Child Inc., Shelter	1	2	12	12
Guardian	1	2	3	3
Parent	40	74	36	50
Relative	2	4	16	28
Self	1	2	45	45
<b>Total</b>	<b>54</b>	<b>100</b>	<b>33</b>	<b>50</b>

## Legal Status by Average LOS at Release, Third Quarter 2009.

	Administrative Hold		Sentenced		Total	
	No.	LOS	No.	LOS	No.	LOS
Family Court	7	4	47	38	54	33
30 days or less	7	4	10	17	17	12
31 days or more	0	.	37	43	37	43
Superior Court	0	.	0	.	0	.
120 days or less	0	.	0	.	0	.
121 days or more	0	.	0	.	0	.
<b>Total</b>	<b>7</b>	<b>4</b>	<b>47</b>	<b>38</b>	<b>54</b>	<b>33</b>

## Crime Category at Release, Third Quarter 2009.

Category	Number	Percent	LOS in days	
			Mean	Maximum
Violent felony	12	22	43	50
Violent misdemeanor	1	2	36	36
Non-violent felony	13	24	43	50
Non-violent misdemeanor	5	9	38	43
Unclassified misdemeanor	1	2	15	15
Probation violation	15	28	29	50
Administrative hold/Aftercare revocation	7	13	4	8
<b>Total</b>	<b>54</b>	<b>100</b>	<b>33</b>	<b>50</b>