



**State of Delaware
Executive Department
Office of Management and Budget**

To: John Frazer
From: Jorge Rodríguez-Labarca
Date: October 30, 2009
Subject: Second Quarter 2009 Mowlds Cottage Status Report

Admissions: There were 52 admissions during the second quarter of 2009.

Admission demographics: Forty-three African Americans and 9 whites were admitted during the second quarter.

Leading charges at admission: The most frequent leading charges at admission for the second quarter were: violation of probation, 16; administrative hold, 5; and burglary in the third degree, 4. Seventeen percent, or 9 youth, were admitted for violent felonies.

Length of stay: On June 30, there were 20 Family Court youth at Mowlds Cottage with an average length of stay (LOS) of 23 days, a median LOS of 20 days, and a maximum LOS of 41 days.

Snapshot demographics: Of the 20 youth at Mowlds Cottage, there were seventeen African Americans and three whites.

Youth's status: Nineteen youth were serving indefinite Family Court sentences and one an administrative hold.

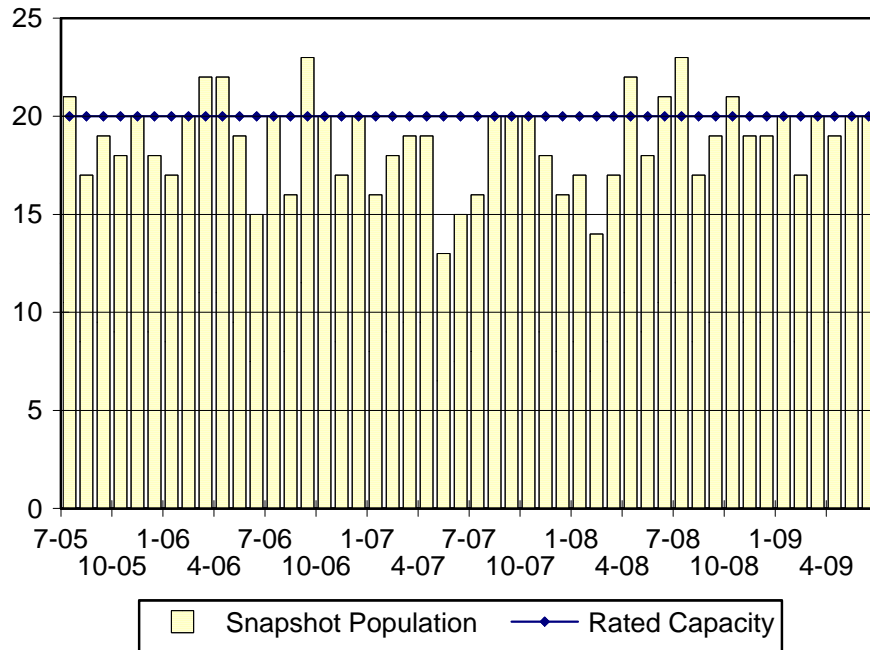
Releases: 52 youth were released during the second quarter of 2009 with an average LOS of 32 days and a maximum LOS of 44 days.



**Budget Development, Planning and Administration
Statistical Analysis Center**

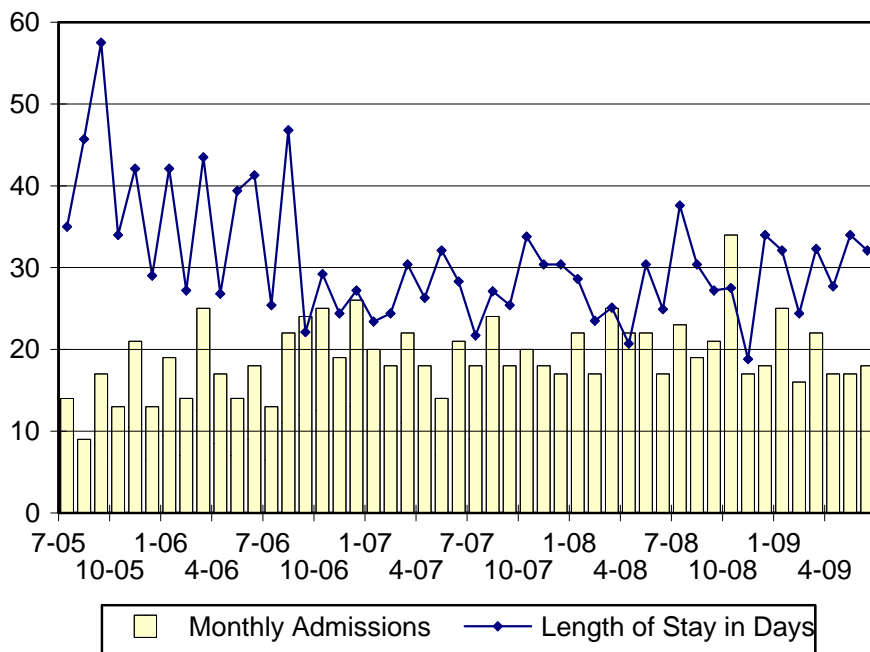
410 Federal Street • Suite 6 • Dover, DE 19901
Phone: (302) 739-4626 • Fax: (302) 739-4630 • www.omb.delaware.gov

Mowlds Cottage Snapshot Population and Rated Capacity



Snapshot populations are taken at the end of any given month.

Mowlds Cottage Admissions and Time Served



Length of Stay: Average time in days at the Mowlds for youth given monthly admissions and snapshot populations.

Admissions, Second Quarter 2009.

Month	Number	Percent
April	17	33
May	17	33
June	18	35
Total	52	100

Admission Demographics, Second Quarter 2009.

Race/ethnicity and age	Total	
	Number	Percent
African American		
15	5	10
16	16	31
17	19	37
18	3	6
Subtotal	43	83
White		
14	1	2
15	1	2
16	1	2
17	5	10
18	1	2
Subtotal	9	17
Total	52	100

Admissions Profile for
Second Quarter 2009 Mowlds Cottage Admittees

Admissions	<u>Youth</u>			<u>Admissions</u>		
	Number	Percent	Cum. %	Number	Percent	Cum. %
Total	52	100	100	416	100	100
First admission	0	.	.	0	.	.
Multiple admissions	52	100	100	416	100	100
2 nd	1	2	2	2	0	0
3 rd	2	4	6	6	1	2
4 th	6	12	17	24	6	8
5 th	8	15	33	40	10	17
6 th	6	12	44	36	9	26
7 th	7	13	58	49	12	38
8 th	3	6	63	24	6	44
9 th	2	4	67	18	4	48
10 th	2	4	71	20	5	53
11 th	5	10	81	55	13	66
12 th	4	8	88	48	12	77
13 th	1	2	90	13	3	81
14 th	1	2	92	14	3	84
15 th	1	2	94	15	4	88
16 th	2	4	98	32	8	95
...	.	.	98	.	.	95
20 th	1	2	100	20	5	100

Note: First admission means that, heretofore, a juvenile had never been admitted to Secure Detention, residential Level III, Level IV, Level V, or Division of Family Services (DFS) and Child Mental Health (CMH) programs that provide residential services. Included in the count of multiple admissions are those admitted to secure detention, residential Level III, Level IV, Level V, and DFS and CMH programs that provide residential services which are classified by DSCYF as crisis bed; mental health; residential group care; treatment center; residential Interagency Collaborative Team; residential treatment, mental health; and residential treatment, substance abuse.

**Admission Profile by Dispositional
Level for Second Quarter 2009 Mowlds Cottage Admittees**

Admissions	Number and percent of youth							
	Sec. Det.		L. V		L. IV		L. III	
	N.	%	N.	%	N.	%	N.	%
Total	52	100	52	100	52	100	52	100
No prior admissions	13	25	17	33	10	19	8	15
Multiple admissions	39	75	35	67	42	81	44	85
2 nd	16	31	4	8	13	25	8	15
3 rd	13	25	25	48	4	8	13	25
4 th	5	10	4	8	6	12	10	19
5 th	3	6	2	4	7	13	6	12
6 th	1	2	0	.	5	10	2	4
7 th	1	2	0	.	3	6	2	4
8 th	0	.	0	.	1	2	0	.
9 th	0	.	0	.	1	2	0	.
10 th	0	.	0	.	1	2	1	2
11 th	0	.	0	.	0	.	0	.
12 th	0	.	0	.	0	.	0	.
13 th	0	.	0	.	0	.	0	.
14 th	0	.	0	.	0	.	2	4
15 th	0	.	0	.	1	2	0	.

Note: Included in the count of multiple admissions are those admitted to Secure Detention (Sec. Det.), Level III, Level IV, Level V, and Division of Family Services and Child Mental Health programs that provide residential services which are classified by DSCYF as crisis bed; mental health; residential group care; treatment center; residential Interagency Collaborative Team; residential treatment, mental health; and residential treatment, substance abuse.

Reading this table: This table shows that 75 percent of youth admitted to Mowlds Cottage during the second quarter of 2009 had prior admissions to secure detention, 67 percent to Level V, 81 percent to Level IV, and 85 percent to Level III. All youth without prior Level IV admissions had prior admissions to secure detention, Levels III, and/or V.

Leading Charge at Admission, Second Quarter 2009.

Sentenced admissions	Total	Race	
		White	Minority
Administrative hold	5	1	4
Assault in a detention facility, causing injury	2	0	2
Breach of conditions of release, misdemeanor	1	0	1
Burglary in the second degree	2	0	2
Burglary in the third degree	4	1	3
Conspiracy in the second degree	2	1	1
Conspiracy in the third degree	1	0	1
Escape after conviction	2	1	1
Offensive touching	2	1	1
Possessing a destructive weapon	1	0	1
Possession of a deadly weapon by a person prohibited, firearm	1	0	1
Possession of burglar's tools	1	0	1
Possession or use of a non-narcotic	1	0	1
Possession with intent to deliver non-narcotics	1	0	1
Receiving stolen property, felony	2	1	1
Receiving stolen property, misdemeanor	1	0	1
Reckless driving	1	1	0
Resisting arrest	1	0	1
Resisting arrest with force or violence, class G felony	1	0	1
Robbery in the second degree	1	0	1
Theft, felony	1	0	1
Theft, misdemeanor	1	0	1
Theft, misdemeanor, where the victim is 62 years or older	1	0	1
Violation of probation	16	2	14
Total	52	9	43

Crime Category at Admission, Second Quarter 2009.

<u>Category</u>	<u>Count</u>	<u>Percent</u>
Violent felony	9	17
Non-violent felony	12	23
Non-violent misdemeanor	9	17
Traffic misdemeanor	1	2
Probation violation	16	31
Administrative hold/Aftercare revocation	5	10
Total	52	100

Length of Stay on June 30, 2009.

<u>LOS in intervals</u>	<u>Youth</u>	<u>Length of Stay</u>		
	<u>Number</u>	<u>Average</u>	<u>Median</u>	<u>Maximum</u>
1 to 3 days	0	.	.	.
4 to 14 days	5	9	6	13
15 to 29 days	10	22	20	27
30 to 59 days	5	38	41	41
60 to 119 days	0	.	.	.
120 to 179 days	0	.	.	.
180 plus days	0	.	.	.
Summary	20	23	20	41

Legal Status by Average LOS at Snapshot on June 30, 2009.

	<u>Administrative Hold</u>		<u>Sentenced</u>		<u>Total</u>	
	<u>No.</u>	<u>LOS</u>	<u>No.</u>	<u>LOS</u>	<u>No.</u>	<u>LOS</u>
Family Court	1	20	19	23	20	23
30 days or less	1	20	14	17	15	17
31 days or more	0	.	5	38	5	38
Superior Court	0	.	0	.	0	.
120 days or less	0	.	0	.	0	.
121 days or more	0	.	0	.	0	.
Total	1	20	19	23	20	23

Population Demographics on June 30, 2009.

Race/ethnicity and age	Total	
	Number	Percent
African American		
15	3	15
16	4	20
17	9	45
18	1	5
Subtotal	17	85
White		
14	1	5
17	1	5
18	1	5
Subtotal	3	15
Total	20	100

Youth's Involvement on June 30, 2009.

Aftercare revocation	Number	LOS in days
Aftercare	1	20
Sentenced	Number	LOS in days
Division of Child Mental Health	1	33
Division of Family Services	0	.
Aftercare	10	23
Probation Case	0	.
Serious Juvenile Offender and Comprehensive Aftercare Program	2	34
Indefinite sentences	19	23

Releases, Second Quarter 2009.

To whom released/program	Number	Percent	LOS in days	
			Mean	Maximum
Community Services, Project Stay Free, Day Treatment	1	2	30	30
Community Services, Project Stay Free, ICCP	1	2	43	43
Community Services, VisionQuest, FCIM	1	2	3	3
Guardian	1	2	3	3
Parent	43	83	33	44
Relative	3	6	39	44
Community Services, Secure Alert, E. M.	1	2	29	29
YRS, New Castle County Detention Center	1	2	32	32
Total	52	100	32	44

Legal Status by Average LOS at Release, Second Quarter 2009.

	Administrative Hold		Sentenced		Total	
	No.	LOS	No.	LOS	No.	LOS
Family Court	5	3	47	35	52	32
30 days or less	5	3	15	26	20	20
31 days or more	0	.	32	40	32	40
Superior Court	0	.	0	.	0	.
120 days or less	0	.	0	.	0	.
121 days or more	0	.	0	.	0	.
Total	5	3	47	35	52	32

Crime Category at Release, Second Quarter 2009.

Category	Number	Percent	LOS in days	
			Mean	Maximum
Violent felony	9	17	36	43
Violent misdemeanor	1	2	29	29
Non-violent felony	9	17	39	43
Non-violent misdemeanor	12	23	37	44
Traffic misdemeanor	2	4	39	41
Probation violation	14	27	31	44
Administrative hold/Aftercare revocation	5	10	3	3
Total	52	100	32	44