



**State of Delaware
Executive Department
Office of Management and Budget**

To: John Frazer
From: Jorge Rodríguez-Labarca
Date: August 3, 2009
Subject: First Quarter 2009 Mowlds Cottage Status Report

Admissions: There were 63 admissions during the first quarter of 2009.

Admission demographics: Fifty-one African Americans and 12 whites were admitted during the first quarter.

Leading charges at admission: The most frequent leading charges at admission for the first quarter were: violation of probation, 16; administrative hold, 8; and possession of a firearm by a person prohibited, possession with intent to deliver narcotics, and robbery in the first degree, 3. Nineteen percent, or 12 youth, were admitted for violent felonies.

Length of stay: On March 31, there were 20 Family Court youth at Mowlds Cottage with an average length of stay (LOS) of 21 days, a median LOS of 20 days, and a maximum LOS of 41 days.

Snapshot demographics: Of the 20 youth at Mowlds Cottage, there were sixteen African Americans and four whites.

Youth's status: Nineteen youth were serving indefinite Family Court sentences and one an administrative hold.

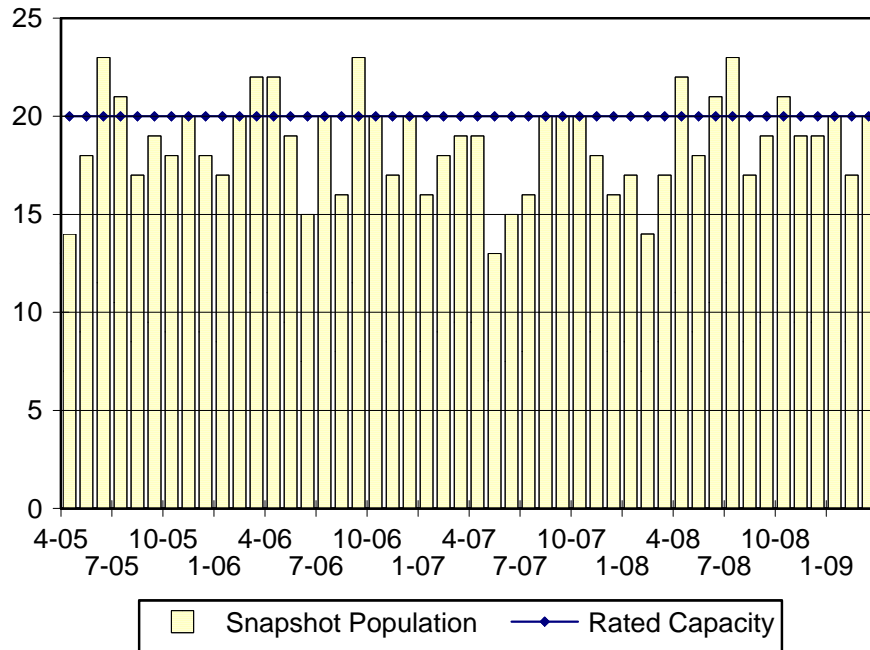
Releases: 62 youth were released during the first quarter of 2009 with an average LOS of 28 days and a maximum LOS of 58 days.



**Budget Development, Planning and Administration
Statistical Analysis Center**

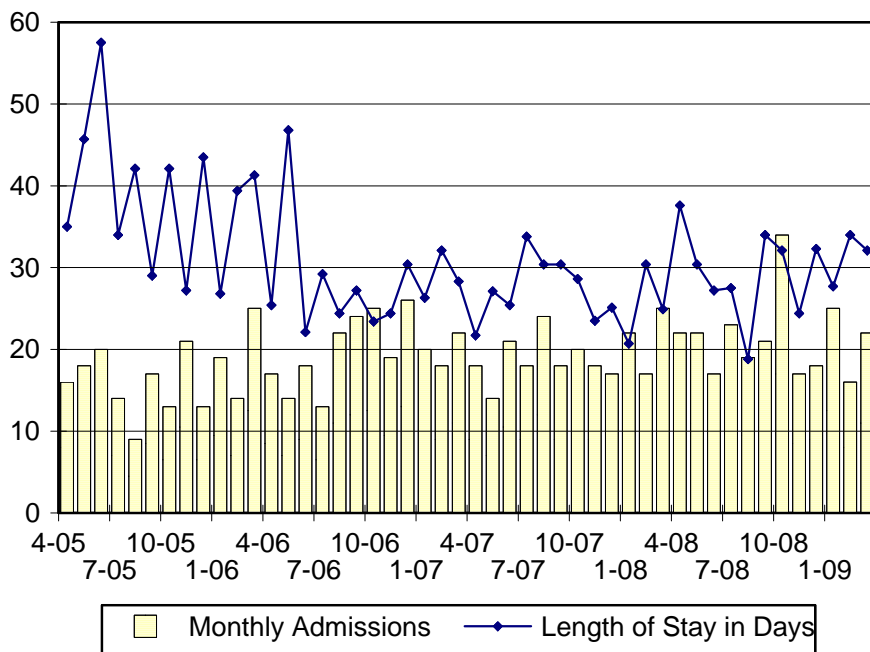
410 Federal Street • Suite 6 • Dover, DE 19901
Phone: (302) 739-4626 • Fax: (302) 739-4630 • www.omb.delaware.gov

Mowlds Cottage Snapshot Population and Rated Capacity



Snapshot populations are taken at the end of any given month.

Mowlds Cottage Admissions and Time Served



Length of Stay: Average time in days at the Mowlds for youth given monthly admissions and snapshot populations.

Admissions, First Quarter 2009.

Month	Number	Percent
January	25	40
February	16	25
March	22	35
Total	63	100

Admission Demographics, First Quarter 2009.

Race/ethnicity and age	Total	
	Number	Percent
African American		
14	3	5
15	9	14
16	17	27
17	17	27
18	5	8
Subtotal	51	81
White		
16	6	10
17	3	5
18	3	5
Subtotal	12	19
Total	63	100

Admissions Profile for
First Quarter 2009 Mowlds Cottage Admittees

Admissions	<u>Youth</u>			<u>Admissions</u>		
	Number	Percent	Cum. %	Number	Percent	Cum. %
Total	63	100	100	512	100	100
First admission	0	.	.	0	.	.
Multiple admissions	63	100	100	512	100	100
2 nd	1	2	2	2	0	0
3 rd	4	6	8	12	2	3
4 th	8	13	21	32	6	9
5 th	5	8	29	25	5	14
6 th	13	21	49	78	15	29
7 th	3	5	54	21	4	33
8 th	3	5	59	24	5	38
9 th	5	8	67	45	9	47
10 th	3	5	71	30	6	53
11 th	3	5	76	33	6	59
12 th	3	5	81	36	7	66
13 th	4	6	87	52	10	76
14 th	3	5	92	42	8	84
15 th	3	5	97	45	9	93
16 th	1	2	98	16	3	96
17 th	0	.	98	0	.	96
18 th	0	.	98	0	.	96
19 th	1	2	100	19	4	100

Note: First admission means that, heretofore, a juvenile had never been admitted to Secure Detention, residential Level III, Level IV, Level V, or Division of Family Services (DFS) and Child Mental Health (CMH) programs that provide residential services. Included in the count of multiple admissions are those admitted to secure detention, residential Level III, Level IV, Level V, and DFS and CMH programs that provide residential services which are classified by DSCYF as crisis bed; mental health; residential group care; treatment center; residential Interagency Collaborative Team; residential treatment, mental health; and residential treatment, substance abuse.

**Admission Profile by Dispositional
Level for First Quarter 2009 Mowlds Cottage Admittees**

Admissions	Number and percent of youth							
	Sec. Det.		L. V		L. IV		L. III	
	N.	%	N.	%	N.	%	N.	%
Total	63	100	63	100	63	100	63	100
No prior admissions	11	17	24	38	13	21	13	21
Multiple admissions	52	83	39	62	50	79	50	79
2 nd	19	30	10	16	13	21	10	16
3 rd	14	22	26	41	7	11	11	17
4 th	11	17	3	5	9	14	7	11
5 th	3	5	0	.	6	10	9	14
6 th	3	5	0	.	5	8	4	6
7 th	0	.	0	.	5	8	4	6
8 th	2	3	0	.	2	3	2	3
9 th	0	.	0	.	1	2	3	5
10 th	0	.	0	.	0	.	0	.
11 th	0	.	0	.	1	2	0	.
12 th	0	.	0	.	1	2	0	.

Note: Included in the count of multiple admissions are those admitted to Secure Detention (Sec. Det.), Level III, Level IV, Level V, and Division of Family Services and Child Mental Health programs that provide residential services which are classified by DSCYF as crisis bed; mental health; residential group care; treatment center; residential Interagency Collaborative Team; residential treatment, mental health; and residential treatment, substance abuse.

Reading this table: This table shows that 83 percent of youth admitted to Mowlds Cottage during the first quarter of 2009 had prior admissions to secure detention, 62 percent to Level V, 79 percent to Level IV, and 79 percent to Level III. All youth without prior Level IV admissions had prior admissions to secure detention, Levels III, and/or V.

Leading Charge at Admission, First Quarter 2009.

Sentenced admissions	Total	Race	
		White	Minority
Administrative hold	8	1	7
Administrative hold, Aftercare revocation	1	1	0
Assault in the third degree	2	0	2
Burglary in the second degree	2	0	2
Conspiracy in the second degree	2	0	2
Criminal impersonation	2	0	2
Criminal mischief, class G felony	1	0	1
Criminal mischief, unclassified misdemeanor	1	0	1
Criminal trespassing in the first degree	1	0	1
Criminal trespassing in the third degree	1	0	1
Disorderly conduct	1	0	1
Driving without a license	1	1	0
Escape in the third degree	1	1	0
Menacing	1	0	1
Offensive touching	1	0	1
Possession of a deadly weapon by person a prohibited, firearm	3	0	3
Possession of drug paraphernalia	2	1	1
Possession or use of narcotics	2	0	2
Possession with intent to deliver narcotics	3	1	2
Possession with intent to deliver non-narcotics	1	1	0
Reckless endangering in the first degree	1	0	1
Resisting arrest	1	0	1
Robbery in the first degree	3	0	3
Robbery in the second degree	2	0	2
Tampering with physical evidence	1	0	1
Theft, misdemeanor	1	1	0
Violation of curfew	1	0	1
Violation of probation	16	4	12
Total	63	12	51

Crime Category at Admission, First Quarter 2009.

<u>Category</u>	<u>Count</u>	<u>Percent</u>
Violent felony	12	19
Violent misdemeanor	4	6
Non-violent felony	7	11
Non-violent misdemeanor	12	19
Traffic misdemeanor	1	2
Probation violation	16	25
Administrative hold/Aftercare revocation	9	14
Unclassified violation	2	3
Total	63	100

Length of Stay on March 31, 2009.

<u>LOS in intervals</u>	<u>Youth</u>	<u>Length of Stay</u>		
	<u>Number</u>	<u>Average</u>	<u>Median</u>	<u>Maximum</u>
1 to 3 days	0	.	.	.
4 to 14 days	5	9	6	13
15 to 29 days	13	23	20	27
30 to 59 days	2	38	38	41
60 to 119 days	0	.	.	.
120 to 179 days	0	.	.	.
180 plus days	0	.	.	.
Summary	20	21	20	41

Legal Status by Average LOS at Snapshot on March 31, 2009.

	<u>Administrative Hold</u>		<u>Sentenced</u>		<u>Total</u>	
	<u>No.</u>	<u>LOS</u>	<u>No.</u>	<u>LOS</u>	<u>No.</u>	<u>LOS</u>
Family Court	1	27	19	20	20	21
30 days or less	1	27	17	18	18	19
31 days or more	0	.	2	38	2	38
Superior Court	0	.	0	.	0	.
120 days or less	0	.	0	.	0	.
121 days or more	0	.	0	.	0	.
Total	1	27	19	20	20	21

Population Demographics on March 31, 2009.

Race/ethnicity and age	Total	
	Number	Percent
African American		
15	2	10
16	6	30
17	5	25
18	3	15
Subtotal	16	80
White		
16	2	10
18	2	10
Subtotal	4	20
Total	20	100

Youth's Involvement on March 31, 2009.

Aftercare revocation	Number	LOS in days
Aftercare	1	27
Sentenced	Number	LOS in days
Division of Child Mental Health	1	20
Division of Family Services	0	.
Aftercare	12	20
Probation Case	0	.
Serious Juvenile Offender and Comprehensive Aftercare Program	1	26
Indefinite sentences	19	20

Releases, First Quarter 2009.

To whom released/program	Number	Percent	LOS in days	
			Mean	Maximum
Community Services, Abraxas IIIA	1	2	29	29
Parent	61	98	28	58
Total	62	100	28	58

Legal Status by Average LOS at Release, First Quarter 2009.

	Administrative Hold		Sentenced		Total	
	No.	LOS	No.	LOS	No.	LOS
Family Court	12	12	50	32	62	28
30 days or less	9	4	21	26	30	19
31 days or more	3	37	29	37	32	37
Superior Court	0	.	0	.	0	.
120 days or less	0	.	0	.	0	.
121 days or more	0	.	0	.	0	.
Total	12	12	50	32	62	28

Crime Category at Release, First Quarter 2009.

Category	Number	Percent	LOS in days	
			Mean	Maximum
Violent felony	12	19	33	44
Violent misdemeanor	6	10	32	38
Non-violent felony	9	15	37	58
Non-violent misdemeanor	7	11	29	36
Probation violation	17	27	31	43
Administrative hold/Aftercare revocation	9	15	4	8
Unclassified violation	2	3	37	43
Total	62	100	28	58