



**State of Delaware
Executive Department
Office of Management and Budget**

To: John Frazer
From: Jorge Rodríguez-Labarca
Date: December 17, 2008
Subject: Third Quarter 2008 Mowlds Cottage Status Report

Admissions: There were 63 admissions during the third quarter of 2008.

Admission demographics: Forty-four African Americans, 18 whites, and one Hispanic were admitted during the third quarter.

Leading charges at admission: The most frequent leading charges at admission for the third quarter were: violation of probation, 26; and, administrative hold, 10. Fourteen percent, or 9 youth, were admitted for violent felonies.

Length of stay: On June 30, there were 19 Family Court youth at Mowlds Cottage with an average length of stay (LOS) of 23 days, a median LOS of 26 days, and a maximum LOS of 41 days.

Snapshot demographics: Of the 19 youth at Mowlds Cottage, there were thirteen African Americans and six whites.

Youth's status: Eighteen youth were serving indefinite Family Court sentences and one was serving an Aftercare revocation.

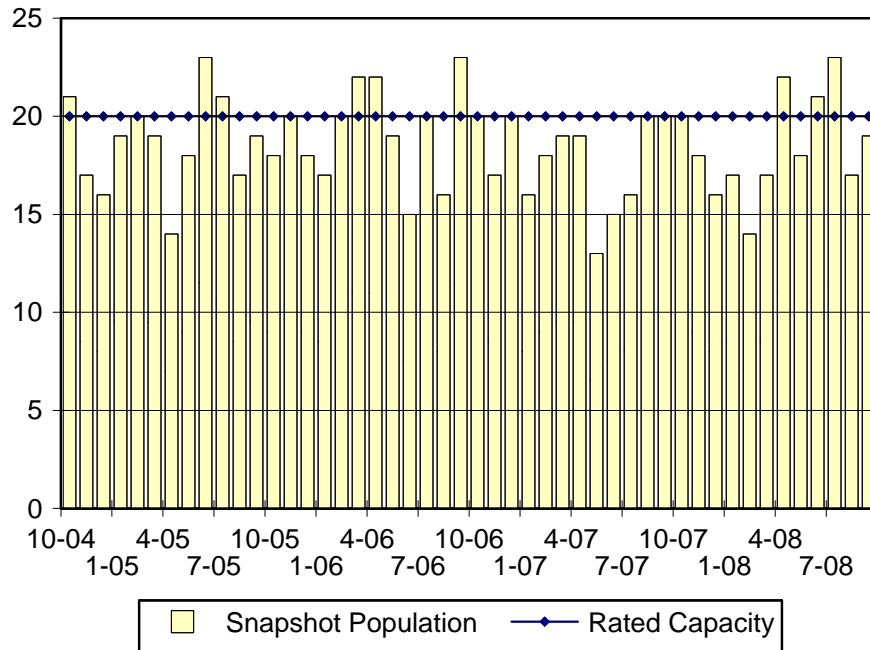
Releases: 65 youth were released during the third quarter of 2008 with an average LOS of 29 days and a maximum LOS of 63 days.



**Budget Development, Planning and Administration
Statistical Analysis Center**

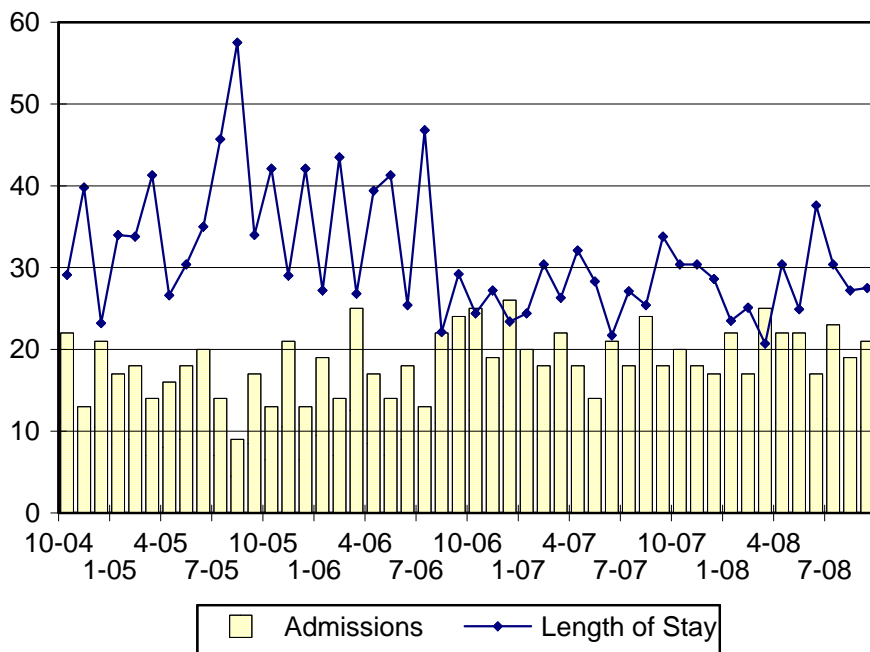
410 Federal Street • Suite 6 • Dover, DE 19901
Phone: (302) 739-4626 • Fax: (302) 739-4630 • www.omb.delaware.gov

Mowlds Cottage Snapshot Population and Rated Capacity



Snapshot populations are taken at the end of any given month.

Mowlds Cottage Admissions and Time Served



Length of Stay: Average time in days at the Mowlds for youth given monthly admissions and snapshot populations.

Admissions, Third Quarter 2008.

Month	Number	Percent
July	23	37
August	19	30
September	21	33
Total	63	100

Admission Demographics, Third Quarter 2008.

Race/ethnicity and age	Total	
	Number	Percent
African American		
14	3	5
15	8	13
16	12	19
17	15	24
18	6	10
Subtotal	44	70
Hispanic		
15	1	2
Subtotal	1	2
White		
15	1	2
16	5	8
17	10	16
18	2	3
Subtotal	18	29
Total	63	100

Admissions Profile for
Third Quarter 2008 Mowlds Cottage Admittees

Admissions	Youth			Admissions		
	Number	Percent	Cum. %	Number	Percent	Cum. %
Total	63	100	100	499	100	100
First admission	1	2	2	1	0	0
Multiple admissions	62	98	98	498	100	100
2 nd	3	5	6	6	1	1
3 rd	9	14	21	27	5	7
4 th	3	5	25	12	2	9
5 th	6	10	35	30	6	15
6 th	3	5	40	18	4	19
7 th	10	16	56	70	14	33
8 th	3	5	60	24	5	38
9 th	6	10	70	54	11	48
10 th	3	5	75	30	6	55
11 th	3	5	79	33	7	61
12 th	4	6	86	48	10	71
13 th	0	.	86	0	.	71
14 th	2	3	89	28	6	76
15 th	0	.	89	0	.	76
16 th	2	3	92	32	6	83
17 th	4	6	98	68	14	96
18 th	1	2	100	18	4	100

Note: First admission means that, heretofore, a juvenile had never been admitted to Secure Detention, residential Level III, Level IV, Level V, or Division of Family Services (DFS) and Child Mental Health (CMH) programs that provide residential services. Included in the count of multiple admissions are those admitted to secure detention, residential Level III, Level IV, Level V, and DFS and CMH programs that provide residential services which are classified by DSCYF as crisis bed; mental health; residential group care; treatment center; residential Interagency Collaborative Team; residential treatment, mental health; and residential treatment, substance abuse.

**Admission Profile by Dispositional
Level for Third Quarter 2008 Mowlds Cottage Admittees**

Admissions	Number and percent of youth							
	<u>Sec. Det.</u>		<u>L. V</u>		<u>L. IV</u>		<u>L. III</u>	
	N.	%	N.	%	N.	%	N.	%
Total	63	100	63	100	63	100	63	100
No prior admissions	6	10	28	44	12	19	8	13
Multiple admissions	57	90	35	56	51	81	55	87
2 nd	19	30	16	25	10	16	13	21
3 rd	13	21	13	21	7	11	13	21
4 th	12	19	3	5	13	21	17	27
5 th	6	10	3	5	6	10	7	11
6 th	1	2	0	.	6	10	1	2
7 th	3	5	0	.	1	2	2	3
8 th	0	.	0	.	3	5	0	.
9 th	2	3	0	.	2	3	1	2
10 th	0	.	0	.	0	.	0	.
11 th	1	2	0	.	0	.	0	.
12 th	0	.	0	.	0	.	0	.
13 th	0	.	0	.	1	2	0	.
14 th	0	.	0	.	1	2	1	2
15 th	0	.	0	.	1	2	0	.

Note: Included in the count of multiple admissions are those admitted to Secure Detention (Sec. Det.), Level III, Level IV, Level V, and Division of Family Services and Child Mental Health programs that provide residential services which are classified by DSCYF as crisis bed; mental health; residential group care; treatment center; residential Interagency Collaborative Team; residential treatment, mental health; and residential treatment, substance abuse.

Reading this table: This table shows that 90 percent of youth admitted to Mowlds Cottage during the third quarter of 2008 had prior admissions to secure detention, 56 percent to Level V, 81 percent to Level IV, and 87 percent to Level III. All youth without prior Level IV admissions had prior admissions to secure detention, Levels III, and/or V.

Leading Charge at Admission, Third Quarter 2008.

Sentenced admissions	Total	Race	
		White	Minority
Administrative hold	10	2	8
Administrative hold, Aftercare revocation	1	0	1
Burglary in the second degree	3	0	3
Burglary in the third degree	3	2	1
Criminal impersonation	1	0	1
Criminal mischief, class G felony	1	1	0
Escape after conviction	1	0	1
Escape in the third degree	1	1	0
Possession of a deadly weapon by a person prohibited, firearm	3	0	3
Possession of shoplifters' tools or instruments	1	0	1
Possession or use of a non-narcotic	1	1	0
Possession with intent to deliver narcotics	3	0	3
Receiving stolen property, misdemeanor	2	2	0
Resisting arrest	1	0	1
Robbery in the second degree	2	0	2
Terroristic threatening, misdemeanor	2	1	1
Theft of a motor vehicle	1	0	1
Violation of probation	26	8	18
Total	63	18	45

Crime Category at Admission, Third Quarter 2008.

<u>Category</u>	<u>Count</u>	<u>Percent</u>
Violent felony	9	14
Violent misdemeanor	2	3
Non-violent felony	9	14
Non-violent misdemeanor	6	10
Probation violation	26	41
Administrative hold/Aftercare revocation	11	17
Total	63	100

Length of Stay on June 30, 2008.

<u>LOS in intervals</u>	<u>Youth</u>	<u>Length of Stay</u>		
	<u>Number</u>	<u>Average</u>	<u>Median</u>	<u>Maximum</u>
1 to 3 days	0	.	.	.
4 to 14 days	4	9	10	13
15 to 29 days	11	24	26	27
30 to 59 days	4	36	34	41
60 to 119 days	0	.	.	.
120 to 179 days	0	.	.	.
180 plus days	0	.	.	.
Summary	19	23	26	41

Legal Status by Average LOS at Snapshot on June 30, 2008.

	<u>Administrative Hold</u>		<u>Sentenced</u>		<u>Total</u>	
	<u>No.</u>	<u>LOS</u>	<u>No.</u>	<u>LOS</u>	<u>No.</u>	<u>LOS</u>
Family Court	1	26	18	23	19	23
30 days or less	1	26	14	19	15	20
31 days or more	0	.	4	36	4	36
Superior Court	0	.	0	.	0	.
120 days or less	0	.	0	.	0	.
121 days or more	0	.	0	.	0	.
Total	1	26	18	23	19	23

Population Demographics on June 30, 2008.

Race/ethnicity and age	Total	
	Number	Percent
African American		
14	1	5
16	4	21
17	7	37
18	1	5
Subtotal	13	68
White		
16	1	5
17	4	21
18	1	5
Subtotal	6	32
Total	19	100

Youth's Involvement on June 30, 2008.

Sentenced	Number	LOS in days
Division of Child Mental Health	1	13
Division of Family Services	1	6
Aftercare	8	23
Probation Case	1	13
Serious Juvenile Offender and Comprehensive Aftercare Program	3	15
Indefinite sentences	18	23
Superior Court	0	.

Releases, Third Quarter 2008.

To whom released/program	Number	Percent	LOS in days	
			Mean	Maximum
AWOL	2	3	43	57
Community Services, Aftercare	19	29	36	63
Community Services, Peoples Place II	1	2	22	22
Community Services, Project Stay Free day treatment	1	2	31	31
Community Services, Project Stay Free electronic m.	1	2	3	3
Community Services, Project Stay Free ICCP	2	3	6	8
Parent	38	58	26	50
Relative	1	2	29	29
Total	65	100	29	63

Legal Status by Average LOS at Release, Third Quarter 2008.

	Administrative Hold		Sentenced		Total	
	No.	LOS	No.	LOS	No.	LOS
Family Court	12	6	53	34	65	29
30 days or less	12	6	20	24	32	17
31 days or more	0	.	33	40	33	40
Superior Court	0	.	0	.	0	.
120 days or less	0	.	0	.	0	.
121 days or more	0	.	0	.	0	.
Total	12	6	53	34	65	29

Crime Category at Release, Third Quarter 2008.

Category	Number	Percent	LOS in days	
			Mean	Maximum
Violent felony	14	22	32	36
Violent misdemeanor	2	3	21	29
Non-violent felony	7	11	40	63
Non-violent misdemeanor	8	12	35	57
Probation violation	23	35	34	50
Administrative hold/Aftercare revocation	11	17	4	8
Total	65	100	29	63

