



STATE OF DELAWARE
EXECUTIVE DEPARTMENT
OFFICE OF MANAGEMENT AND BUDGET

To: John Frazer
From: Jorge Rodríguez-Labarca
Date: October 13, 2008
Subject: Second Quarter 2008 Mowlds Cottage Status Report

Admissions: There were 61 admissions during the second quarter of 2008.

Admission demographics: Forty-five African Americans and 16 whites were admitted during the second quarter.

Leading charges at admission: The most frequent leading charges at admission for the second quarter were: violation of probation, 17; and, administrative hold, 11. Twenty-one percent, or 13 youth, were admitted for violent felonies.

Length of stay: On June 30, there were 21 Family Court youth at Mowlds Cottage with an average length of stay (LOS) of 23 days, a median LOS of 25 days, and a maximum LOS of 54 days.

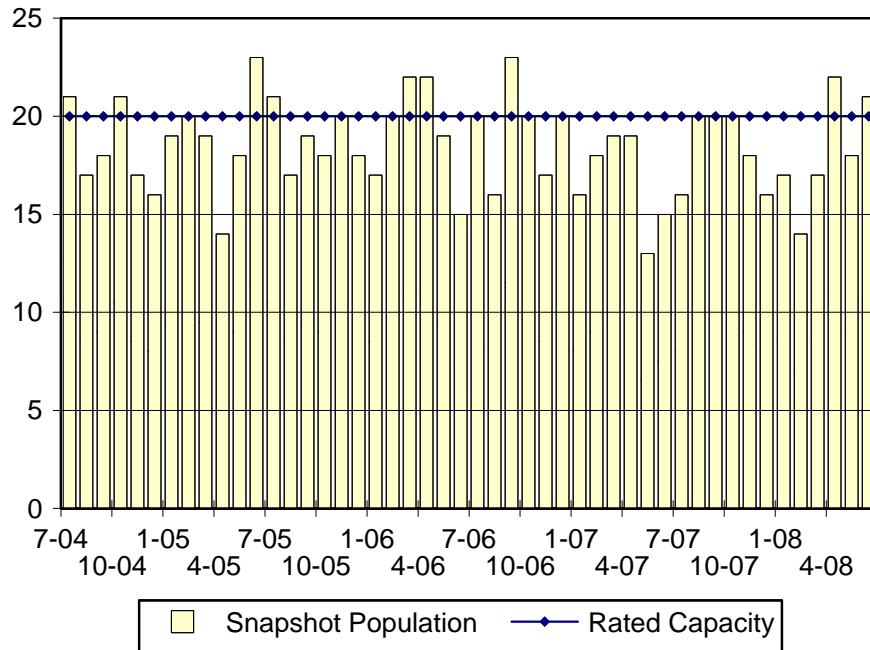
Snapshot demographics: Of the 21 youth at Mowlds Cottage, there were sixteen African Americans and five whites.

Youth's status: Twenty-one youth were serving indefinite Family Court sentences.

Releases: 57 youth were released during the second quarter of 2008 with an average LOS of 27 days and a maximum LOS of 71 days.

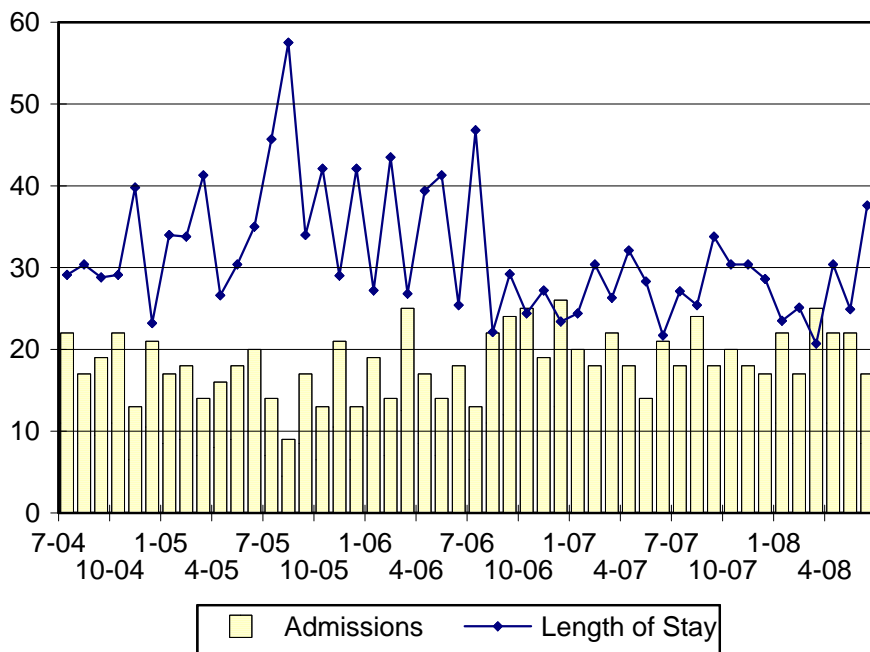


Mowlds Cottage Snapshot Population and Rated Capacity



Snapshot populations are taken at the end of any given month.

Mowlds Cottage Admissions and Time Served



Length of Stay: Average time in days at the Mowlds for youth given monthly admissions and snapshot populations.

Admissions, Second Quarter 2008.

Month	Number	Percent
April	22	36
May	22	36
June	17	28
Total	61	100

Admission Demographics, Second Quarter 2008.

Race/ethnicity and age	Total	
	Number	Percent
African American		
14	6	10
15	8	13
16	6	10
17	16	26
18	9	15
Subtotal	45	74
White		
14	1	2
15	2	3
16	5	8
17	4	7
18	4	7
Subtotal	16	26
Total	61	100

Admissions Profile for
Second Quarter 2008 Mowlds Cottage Admittees

Admissions	Youth			Admissions		
	Number	Percent	Cum. %	Number	Percent	Cum. %
Total	61	100%	100%	474	100%	100%
First admission	0	.	.	0	.	.
Multiple admissions	61	100%	100%	474	100%	100%
2 nd	5	8	8	10	2	2
3 rd	6	10	18	18	4	6
4 th	8	13	31	32	7	13
5 th	8	13	44	40	8	21
6 th	7	11	56	42	9	30
7 th	3	5	61	21	4	34
8 th	1	2	62	8	2	36
9 th	3	5	67	27	6	42
10 th	3	5	72	30	6	48
11 th	3	5	77	33	7	55
12 th	5	8	85	60	13	68
13 th	1	2	87	13	3	70
14 th	1	2	89	14	3	73
15 th	3	5	93	45	9	83
16 th	1	2	95	16	3	86
17 th	0	.	95	0	.	86
18 th	1	2	97	18	4	90
19 th	0	.	97	0	.	90
20 th	0	.	97	0	.	90
21 st	0	.	97	0	.	90
22 nd	1	2	98	22	5	95
23 rd	0	.	98	0	.	95
24 th	0	.	98	0	.	95
25 th	1	2	100	25	5	100

Note: First admission means that, heretofore, a juvenile had never been admitted to Secure Detention, residential Level III, Level IV, Level V, or Division of Family Services (DFS) and Child Mental Health (CMH) programs that provide residential services. Included in the count of multiple admissions are those admitted to secure detention, residential Level III, Level IV, Level V, and DFS and CMH programs that provide residential services which are classified by DSCYF as crisis bed; mental health; residential group care; treatment center; residential Interagency Collaborative Team; residential treatment, mental health; and residential treatment, substance abuse.

**Admission Profile by Dispositional
Level for Second Quarter 2008 Mowlds Cottage Admittees**

Admissions	Number and percent of youth							
	Sec. Det.		L. V		L. IV		L. III	
	N.	%	N.	%	N.	%	N.	%
Total	61	100	61	100	61	100	61	100
No prior admissions	10	16	21	34	15	25	9	15
Multiple admissions	51	84	40	66	46	75	52	85
2 nd	19	31	21	34	9	15	9	15
3 rd	16	26	14	23	11	18	14	23
4 th	2	3	3	5	7	11	13	21
5 th	5	8	2	3	4	7	3	5
6 th	1	2	0	.	5	8	4	7
7 th	3	5	0	.	3	5	1	2
8 th	0	.	0	.	1	2	2	3
9 th	1	2	0	.	2	3	1	2
10 th	0	.	0	.	1	2	1	2
11 th	3	5	0	.	2	3	1	2
12 th	1	2	0	.	0	.	1	2
13 th	0	.	0	.	0	.	1	2
14 th	0	.	0	.	1	2	1	2

Note: Included in the count of multiple admissions are those admitted to Secure Detention (Sec. Det.), Level III, Level IV, Level V, and Division of Family Services and Child Mental Health programs that provide residential services which are classified by DSCYF as crisis bed; mental health; residential group care; treatment center; residential Interagency Collaborative Team; residential treatment, mental health; and residential treatment, substance abuse.

Reading this table: This table shows that 84 percent of youth admitted to Mowlds Cottage during the second quarter of 2008 had prior admissions to secure detention, 66 percent to Level V, 75 percent to Level IV, and 85 percent to Level III. All youth without prior Level IV admissions had prior admissions to secure detention, Levels III, and/or V.

Leading Charge at Admission, Second Quarter 2008.

Sentenced admissions	Total	Race	
		White	Minority
Administrative hold	11	4	7
Administrative hold, Aftercare revocation	2	0	2
Assault in detention facility causing injury	1	1	0
Assault in the second degree	1	0	1
Burglary in the second degree	2	0	2
Burglary in the third degree	1	1	0
Carrying a concealed dangerous instrument	1	0	1
Conspiracy in the second degree	2	0	2
Criminal mischief, unclassified misdemeanor	2	1	1
Criminal trespassing in the first degree	1	0	1
Escape in the third degree	1	0	1
Harassment, aggravated	1	1	0
Maintaining a vehicle for keeping a controlled substance	1	0	1
Possession of a deadly weapon by a person prohibited, firearm	1	0	1
Possession or use of a non-narcotic	1	1	0
Possession with intent to deliver narcotics	3	0	3
Possession with intent to deliver non-narcotics	1	0	1
Receiving a stolen firearm	1	1	0
Receiving stolen property, felony	1	1	0
Reckless endangering in the second degree	1	1	0
Resisting arrest	1	0	1
Robbery in the first degree	3	1	2
Robbery in the first degree, attempted	1	0	1
Robbery in the second degree	1	1	0
Terroristic threatening, felony	1	0	1
Theft, felony	1	0	1
Violation of probation	17	2	15
Total	61	16	45

Crime Category at Admission, Second Quarter 2008.

<u>Category</u>	<u>Count</u>	<u>Percent</u>
Violent felony	13	21
Violent misdemeanor	2	3
Non-violent felony	10	16
Non-violent misdemeanor	6	10
Probation violation	17	28
Administrative hold/Aftercare revocation	13	21
Total	61	100

Length of Stay on June 30, 2008.

<u>LOS in intervals</u>	<u>Youth</u>	<u>Length of Stay</u>		
	<u>Number</u>	<u>Average</u>	<u>Median</u>	<u>Maximum</u>
1 to 3 days	0	.	.	.
4 to 14 days	6	10	12	12
15 to 29 days	10	24	26	29
30 to 59 days	5	37	33	54
60 to 119 days	0	.	.	.
120 to 179 days	0	.	.	.
180 plus days	0	.	.	.
Summary	21	23	25	54

Legal Status by Average LOS at Snapshot on June 30, 2008.

	<u>Administrative Hold</u>		<u>Sentenced</u>		<u>Total</u>	
	<u>No.</u>	<u>LOS</u>	<u>No.</u>	<u>LOS</u>	<u>No.</u>	<u>LOS</u>
Family Court	0	.	21	23	21	23
30 days or less	0	.	16	19	16	19
31 days or more	0	.	5	37	5	37
Superior Court	0	.	0	.	0	.
120 days or less	0	.	0	.	0	.
121 days or more	0	.	0	.	0	.
Total	0	.	21	23	21	23

Population Demographics on June 30, 2008.

Race/ethnicity and age	Total	
	Number	Percent
African American		
14	3	14
15	2	10
16	2	10
17	6	29
18	3	14
Subtotal	16	76
White		
16	2	10
17	2	10
18	1	5
Subtotal	5	24
Total	21	100

Youth's Involvement on June 30, 2008.

Sentenced	Number	LOS in days
Division of Child Mental Health	1	26
Division of Family Services	0	.
Aftercare	18	24
Probation Case	1	20
Serious Juvenile Offender and Comprehensive Aftercare Program	4	23
Indefinite sentences	21	23
Superior Court	0	.

Releases, Second Quarter 2008.

To whom released/program	Number	Percent	LOS in days	
			Mean	Maximum
AWOL	1	2	25	25
Community Services, Aftercare	19	33	30	57
Community Services, P.C.S. Multisystemic T.	2	4	3	3
Community Services, Project Stay Free electronic m.	1	2	3	3
Community Services, Project Stay Free ICCP	1	2	15	15
Parent	30	53	29	50
Relative	3	5	30	71
Total	57	100	27	71

Legal Status by Average LOS at Release, Second Quarter 2008.

	Administrative Hold		Sentenced		Total	
	No.	LOS	No.	LOS	No.	LOS
Family Court	16	9	41	34	57	27
30 days or less	15	6	15	25	30	16
31 days or more	1	55	26	40	27	40
Superior Court	0	.	0	.	0	.
120 days or less	0	.	0	.	0	.
121 days or more	0	.	0	.	0	.
Total	16	9	41	34	57	27

Crime Category at Release, Second Quarter 2008.

Category	Number	Percent	LOS in days	
			Mean	Maximum
Violent felony	15	26	40	71
Violent misdemeanor	2	4	28	44
Non-violent felony	6	11	33	42
Non-violent misdemeanor	6	11	24	31
Probation violation	13	23	36	57
Administrative hold/Aftercare revocation	15	26	6	16
Total	57	100	27	71