



STATE OF DELAWARE  
EXECUTIVE DEPARTMENT  
OFFICE OF MANAGEMENT AND BUDGET

To: John Frazer  
From: Jorge Rodríguez-Labarca  
Date: May 22, 2008  
Subject: First Quarter 2008 Mowlds Cottage Status Report

---

*Admissions:* There were 64 admissions during the first quarter of 2008.

*Admission demographics:* Forty-six African Americans, 17 whites, and one Hispanic were admitted during the first quarter.

*Leading charges at admission:* The most frequent leading charges at admission for the first quarter were: administrative hold, 20; violation of probation, 14; and, administrative hold, Aftercare revocation, 6. Seventeen percent, or 11 youth, were admitted for violent felonies.

*Length of stay:* On March 31, there were 17 Family Court youth at Mowlds Cottage with an average length of stay (LOS) of 20 days, a median LOS of 18 days, and a maximum LOS of 61 days.

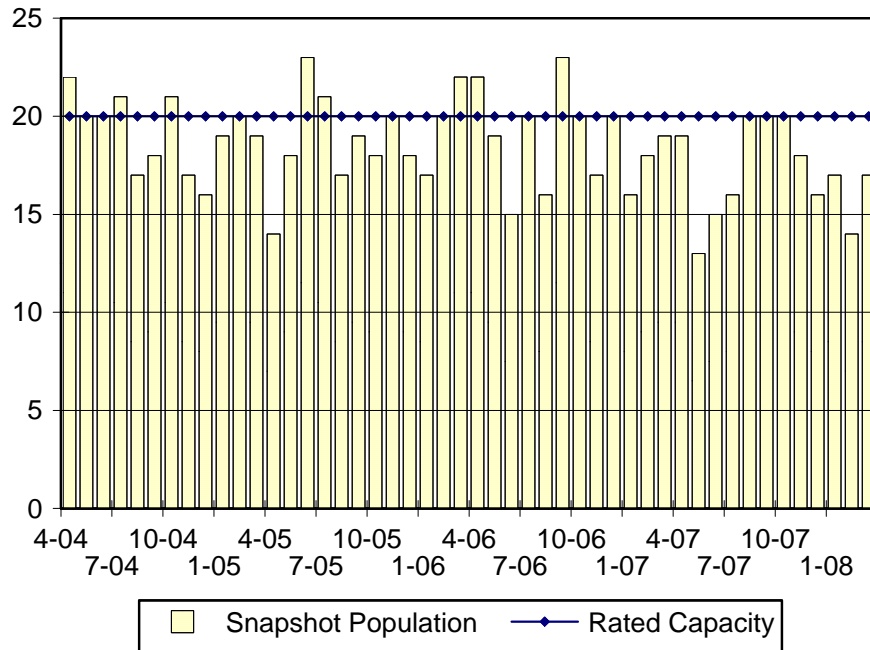
*Snapshot demographics:* Of the 17 youth at Mowlds Cottage, there were eleven African Americans, five whites and one Hispanic.

*Youth's status:* Seventeen youth were serving indefinite Family Court sentences.

*Releases:* 63 youth were released during the first quarter of 2008 with an average LOS of 24 days and a maximum LOS of 55 days.

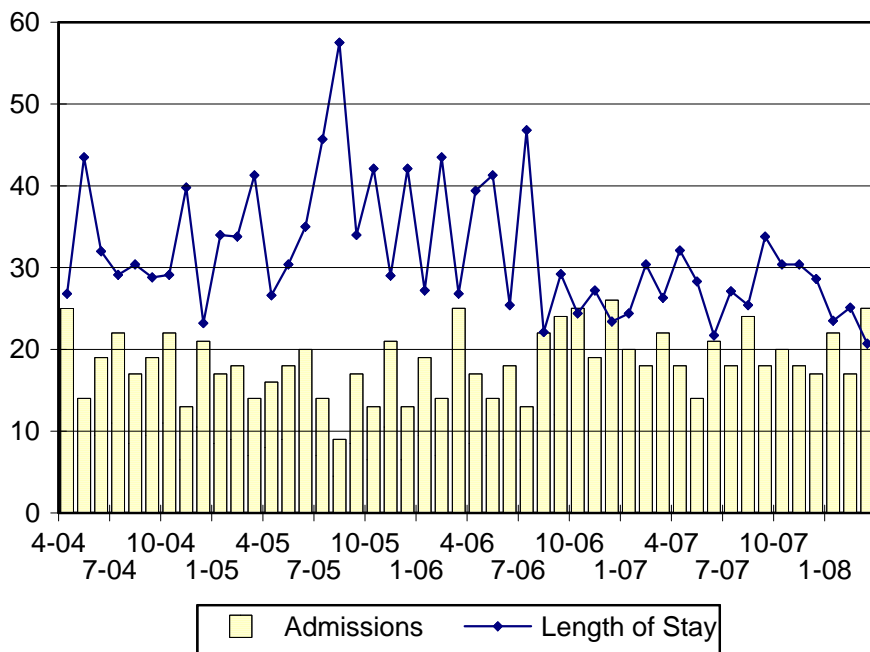


Mowlds Cottage Snapshot Population and Rated Capacity



Snapshot populations are taken at the end of any given month.

Mowlds Cottage Admissions and Time Served



Length of Stay: Average time in days at the Mowlds for youth given monthly admissions and snapshot populations.

Admissions, First Quarter 2008.

Month	Number	Percent
January	22	34
February	17	27
March	25	39
Total	64	100

Admission Demographics, First Quarter 2008.

Race/ethnicity and age	Total	
	Number	Percent
African American		
14	3	5
15	8	13
16	12	19
17	18	28
18	5	8
Subtotal	46	72
Hispanic		
18	1	1
Subtotal	1	1
White		
14	1	2
15	4	6
16	2	3
17	5	8
18	5	8
Subtotal	17	27
Total	64	100

Admissions Profile for  
First Quarter 2008 Mowlds Cottage Admittees

Admissions	<u>Youth</u>			<u>Admissions</u>		
	Number	Percent	Cum. %	Number	Percent	Cum. %
Total	64	100%	100%	546	100%	100%
First admission	2	3%	3%	2	.	.
Multiple admissions	62	97%	97%	544	100%	100%
2 <sup>nd</sup>	2	3%	6%	4	1%	1%
3 <sup>rd</sup>	7	11%	17%	21	4%	5%
4 <sup>th</sup>	2	3%	20%	8	1%	6%
5 <sup>th</sup>	5	8%	28%	25	5%	11%
6 <sup>th</sup>	5	8%	36%	30	5%	16%
7 <sup>th</sup>	8	13%	48%	56	10%	27%
8 <sup>th</sup>	3	5%	53%	24	4%	31%
9 <sup>th</sup>	5	8%	61%	45	8%	39%
10 <sup>th</sup>	4	6%	67%	40	7%	47%
11 <sup>th</sup>	6	9%	77%	66	12%	59%
12 <sup>th</sup>	2	3%	80%	24	4%	63%
13 <sup>th</sup>	3	5%	84%	39	7%	70%
14 <sup>th</sup>	0	.	84%	0	.	70%
15 <sup>th</sup>	5	8%	92%	75	14%	84%
16 <sup>th</sup>	0	.	92%	0	.	84%
17 <sup>th</sup>	3	5%	97%	51	9%	93%
18 <sup>th</sup>	2	3%	100%	36	7%	100%

Note: First admission means that, heretofore, a juvenile had never been admitted to Secure Detention, residential Level III, Level IV, Level V, or Division of Family Services (DFS) and Child Mental Health (CMH) programs that provide residential services. Included in the count of multiple admissions are those admitted to secure detention, residential Level III, Level IV, Level V, and DFS and CMH programs that provide residential services which are classified by DSCYF as crisis bed; mental health; residential group care; treatment center; residential Interagency Collaborative Team; residential treatment, mental health; and residential treatment, substance abuse.

**Admission Profile by Dispositional  
Level for First Quarter 2008 Mowlds Cottage Admittees**

Admissions	Number and percent of youth							
	Sec. Det.		L. V		L. IV		L. III	
	N.	%	N.	%	N.	%	N.	%
Total	64	100%	64	100%	64	100%	64	100%
No prior admissions	14	22%	24	38%	7	11%	6	9%
Multiple admissions	50	78%	40	63%	57	89%	58	91%
2 <sup>nd</sup>	15	23%	17	27%	5	8%	11	17%
3 <sup>rd</sup>	8	13%	18	28%	16	25%	17	27%
4 <sup>th</sup>	9	14%	2	3%	7	11%	6	9%
5 <sup>th</sup>	5	8%	2	3%	12	19%	3	5%
6 <sup>th</sup>	8	13%	1	2%	6	9%	7	11%
7 <sup>th</sup>	4	6%	0	.	3	5%	5	8%
8 <sup>th</sup>	1	2%	0	.	3	5%	2	3%
9 <sup>th</sup>	0	.	0	.	0	.	2	3%
10 <sup>th</sup>	0	.	0	.	3	5%	2	3%
11 <sup>th</sup>	0	.	0	.	0	.	1	2%
12 <sup>th</sup>	0	.	0	.	1	2%	0	.
13 <sup>th</sup>	0	.	0	.	0	.	0	.
14 <sup>th</sup>	0	.	0	.	1	2%	2	3%

Note: Included in the count of multiple admissions are those admitted to Secure Detention (Sec. Det.), Level III, Level IV, Level V, and Division of Family Services and Child Mental Health programs that provide residential services which are classified by DSCYF as crisis bed; mental health; residential group care; treatment center; residential Interagency Collaborative Team; residential treatment, mental health; and residential treatment, substance abuse.

Reading this table: This table shows that 78 percent of youth admitted to Mowlds Cottage during the first quarter of 2008 had prior admissions to secure detention, 63 percent to Level V, 89 percent to Level IV, and 91 percent to Level III. All youth without prior Level IV admissions had prior admissions to secure detention, Levels III, and/or V.

Leading Charge at Admission, First Quarter 2008.

Sentenced admissions	Total	Race	
		White	Minority
Administrative hold	20	6	14
Administrative hold, Aftercare revocation	6	1	5
Animals, fighting and baiting prohibited	1	0	1
Assault in the third degree	1	0	1
Driving while license is suspended or revoked	1	0	1
Harassment, aggravated	1	1	0
Maintaining a vehicle for keeping controlled substances	1	1	0
Offensive touching	1	0	1
Possession of a deadly weapon by person prohibited, firearm	1	0	1
Possession of a firearm during the commission of a felony	2	1	1
Possession or use of a non-narcotic	1	1	0
Possession or use of narcotics	2	0	2
Possession with intent to deliver narcotics	3	0	3
Receiving stolen property, misdemeanor	1	0	1
Resisting arrest	1	0	1
Robbery in the first degree	1	0	1
Robbery in the second degree	3	0	3
Theft, felony	1	1	0
Theft, misdemeanor	1	1	0
Trafficking in illegal drugs from 2.5 to less than 10 grams	1	0	1
Violation of probation	14	4	10
Total	64	17	47

Crime Category at Admission, First Quarter 2008.

<u>Category</u>	<u>Count</u>	<u>Percent</u>
Violent felony	11	17
Violent misdemeanor	3	5
Non-violent felony	4	6
Non-violent misdemeanor	5	8
Traffic misdemeanor	1	2
Probation violation	14	22
Administrative hold/Aftercare revocation	26	41
<b>Total</b>	<b>64</b>	<b>100</b>

Length of Stay on March 31, 2008.

<u>LOS in intervals</u>	<u>Youth</u>	<u>Length of Stay</u>		
	<u>Number</u>	<u>Average</u>	<u>Median</u>	<u>Maximum</u>
1 to 3 days	0	.	.	.
4 to 14 days	7	8	8	13
15 to 29 days	8	22	23	26
30 to 59 days	1	47	47	47
60 to 119 days	1	61	61	61
120 to 179 days	0	.	.	.
180 plus days	0	.	.	.
<b>Summary</b>	<b>17</b>	<b>20</b>	<b>18</b>	<b>61</b>

Legal Status by Average LOS at Snapshot on March 31, 2008.

	<u>Administrative Hold</u>		<u>Sentenced</u>		<u>Total</u>	
	<u>No.</u>	<u>LOS</u>	<u>No.</u>	<u>LOS</u>	<u>No.</u>	<u>LOS</u>
Family Court	2	9	15	22	17	20
30 days or less	2	9	13	17	15	16
31 days or more	0	.	2	54	2	54
Superior Court	0	.	0	.	0	.
120 days or less	0	.	0	.	0	.
121 days or more	0	.	0	.	0	.
<b>Total</b>	<b>2</b>	<b>9</b>	<b>15</b>	<b>22</b>	<b>17</b>	<b>20</b>

Population Demographics on March 31, 2008.

Race/ethnicity and age	Total	
	Number	Percent
African American		
15	1	6
16	2	12
17	5	29
18	3	18
Subtotal	11	65
Hispanic		
18	1	6
Subtotal	1	6
White		
17	1	6
18	4	24
Subtotal	5	29
Total	17	100

Youth's Involvement on March 31, 2008.

Administrative hold	Number	LOS in days
Aftercare	2	9
Sentenced		
Aftercare	3	28
Division of Child Mental Health	1	18
Division of Family Services	1	61
Serious Juvenile Offender and Comprehensive Aftercare Program	5	33
Indefinite sentences	15	22
Superior Court	0	.



Releases, First Quarter 2008.

To whom released/program	Number	Percent	LOS in days	
			Mean	Maximum
AWOL	1	2	41	41
Community Services, Aftercare	2	3	36	36
Community Services, Hennepin County Home School	2	3	4	4
Community Services, P.C.S. Multisystemic T.	3	5	30	43
Community Services, P.C.S. sex offender home srvcs.	1	2	53	53
Community Services, Project Stay Free ICCP	2	3	15	15
Community Services, Providence home based	1	2	3	3
Parent	51	81	24	55
<b>Total</b>	<b>63</b>	<b>100</b>	<b>24</b>	<b>55</b>

Legal Status by Average LOS at Release, First Quarter 2008.

	Administrative Hold		Sentenced		Total	
	No.	LOS	No.	LOS	No.	LOS
Family Court	24	5	39	36	63	24
30 days or less	24	5	9	20	33	9
31 days or more	0	.	30	41	30	41
Superior Court	0	.	0	.	0	.
120 days or less	0	.	0	.	0	.
121 days or more	0	.	0	.	0	.
<b>Total</b>	<b>24</b>	<b>5</b>	<b>39</b>	<b>36</b>	<b>63</b>	<b>24</b>

Crime Category at Release, First Quarter 2008.

Category	Number	Percent	LOS in days	
			Mean	Maximum
Violent felony	16	40	52	16
Non-violent felony	3	36	36	3
Non-violent misdemeanor	14	36	44	14
Probation violation	29	34	55	29
Administrative hold/Aftercare revocation	38	5	15	38
<b>Total</b>	<b>100</b>	<b>24</b>	<b>55</b>	<b>100</b>