



STATE OF DELAWARE
EXECUTIVE DEPARTMENT
OFFICE OF MANAGEMENT AND BUDGET

To: John Frazer
From: Jorge Rodríguez-Labarca
Date: February 15, 2008
Subject: Third Quarter 2007 Mowlds Cottage Status Report

Admissions: There were 60 admissions during the third quarter of 2007.

Admission demographics: Thirty-seven African Americans, 20 whites and three Hispanics were admitted during the third quarter.

Leading charges at admission: The most frequent leading charges at admission for the third quarter were: violation of probation, 18; administrative hold, 13; and, possession with intent to deliver narcotics, 7. Twenty-five percent, or 15 youth, were admitted for violent felonies.

Length of stay: On September 30, there were 20 Family Court youth at Mowlds Cottage with an average length of stay (LOS) of 20 days, a median LOS of 18 days, and a maximum LOS of 74 days.

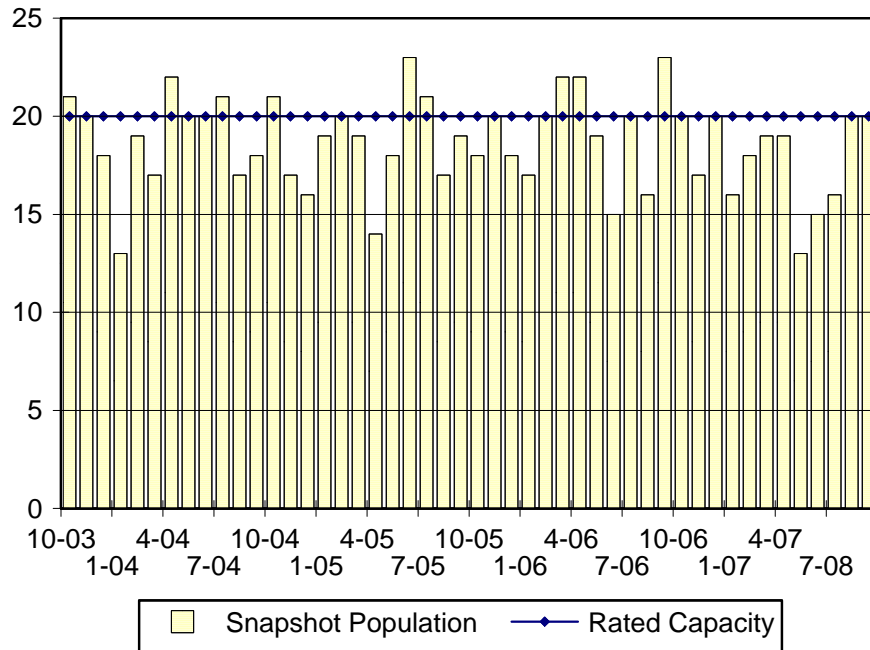
Snapshot demographics: Of the 20 youth at Mowlds Cottage, there were thirteen African Americans and seven whites.

Youth's status: Sixteen youth were serving indefinite Family Court sentences while four were serving administrative sanctions.

Releases: 58 youth were released during the third quarter of 2007 with an average LOS of 25 days and a maximum LOS of 49 days.

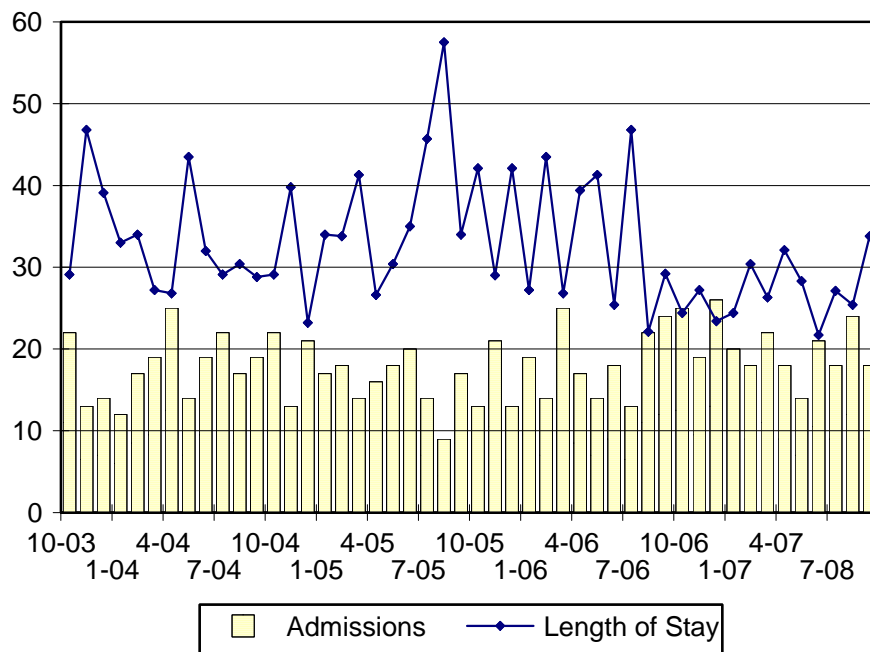


Mowlds Cottage Snapshot Population and Rated Capacity



Snapshot populations are taken at the end of any given month.

Mowlds Cottage Admissions and Time Served



Length of Stay: Average time in days at the Mowlds for youth given monthly admissions and snapshot populations.

Admissions, Third Quarter 2007.

Month	Number	Percent
July	18	30
August	24	40
September	18	30
Total	60	100

Admission Demographics, Third Quarter 2007.

Race/ethnicity and age	Total	
	Number	Percent
African American		
14	3	5
15	7	12
16	9	15
17	12	20
18	6	10
Subtotal	37	62
Hispanic		
16	2	3
18	1	2
Subtotal	3	5
White		
15	5	8
16	2	3
17	11	18
18	2	3
Subtotal	20	33
Total	60	100

**Admissions Profile for
Third Quarter 2007 Mowlds Cottage Admittees**

Admissions	<u>Youth</u>			<u>Admissions</u>		
	Number	Percent	Cum. %	Number	Percent	Cum. %
Total	60	100	100	449	100	100
First admission	1	2	2	1	0	0
Multiple admissions	59	98	98	448	100	100
2 nd	3	5	7	6	1	2
3 rd	8	13	20	24	5	7
4 th	6	10	30	24	5	12
5 th	7	12	42	35	8	20
6 th	3	5	47	18	4	24
7 th	7	12	58	49	11	35
8 th	4	7	65	32	7	42
9 th	4	7	72	36	8	50
10 th	4	7	78	40	9	59
11 th	4	7	85	44	10	69
12 th	3	5	90	36	8	77
13 th	0	.	90	0	.	77
14 th	1	2	92	14	3	80
15 th	1	2	93	15	3	83
16 th	1	2	95	16	4	87
17 th	1	2	97	17	4	91
18 th	0	.	97	0	.	91
19 th	0	.	97	0	.	91
20 th	1	2	98	20	4	95
21 st	0	.	98	0	.	95
22 nd	1	2	100	22	5	100

Note: First admission means that, heretofore, a juvenile had never been admitted to Secure Detention, Level III Residential, Level IV, Level V, or Division of Family Services (DFS) and Child Mental Health (CMH) programs that provide residential services. Included in the count of multiple admissions are those admitted to secure detention, Level III Residential, Level IV, Level V, and DFS and CMH programs that provide residential services which are classified by DSCYF as crisis bed; mental health; residential group care; treatment center; residential Interagency Collaborative Team; residential treatment, mental health; and residential treatment, substance abuse.

**Admission Profile by Dispositional
Level for Third Quarter 2007 Mowlds Cottage Admittees**

Admissions	Number and percent of youth							
	Sec. Det.		L. V		L. IV		L. IIIR	
	N.	%	N.	%	N.	%	N.	%
Total	60	100	60	100	60	100	60	100
No prior admissions	11	18	11	18	17	28	11	18
Multiple admissions	49	82	49	82	43	72	49	82
2 nd	9	15	24	40	18	30	15	25
3 rd	13	22	15	25	7	12	12	20
4 th	9	15	3	5	7	12	13	22
5 th	7	12	4	7	2	3	3	5
6 th	6	10	1	2	4	7	3	5
7 th	1	2	1	2	5	8	0	.
8 th	1	2	1	2	0	.	1	2
9 th	2	3	0	.	0	.	1	2
10 th	0	.	0	.	0	.	0	.
11 th	1	2	0	.	0	.	1	2

Note: Included in the count of multiple admissions are those admitted to Secure Detention (Sec. Det.), Level III Residential (L. IIIR), Level IV, Level V, and Division of Family Services and Child Mental Health programs that provide residential services which are classified by DSCYF as crisis bed; mental health; residential group care; treatment center; residential Interagency Collaborative Team; residential treatment, mental health; and residential treatment, substance abuse.

Reading this table: This table shows that 82 percent of youth admitted to Mowlds Cottage during the third quarter of 2007 had prior admissions to secure detention, 82 percent to Level V, 72 percent to Level IV, and 82 percent to Level IIIR. All youth without prior Level IV admissions had prior admissions to secure detention, Levels IIIR, and/or V.

Leading Charge at Admission, Third Quarter 2007.

Sentenced admissions	Total	Race	
		White	Minority
Administrative hold	13	5	8
Administrative hold, Aftercare revocation	2	0	2
Burglary in the second degree	2	1	1
Burglary in the third degree	1	1	0
Disorderly conduct	1	0	1
Drug court violation	1	0	1
Escape in the third degree	1	1	0
Possession of a firearm during the commission of a felony	2	0	2
Possession with intent to deliver narcotics	7	0	7
Possession with intent to deliver non-narcotics	1	0	1
Receiving stolen property, felony	1	1	0
Receiving stolen property, misdemeanor	1	1	0
Resisting arrest	1	0	1
Riot	1	1	0
Robbery in the first degree	1	0	1
Robbery in the second degree	1	1	0
Theft of a motor vehicle	1	0	1
Theft, felony	2	1	1
Theft, misdemeanor	1	1	0
Unauthorized use of a motor vehicle	1	1	0
Violation of probation	18	5	13
Total	60	20	40

Crime Category at Admission, Third Quarter 2007.

<u>Category</u>	<u>Count</u>	<u>Percent</u>
Violent felony	15	25
Non-violent felony	5	8
Non-violent misdemeanor	6	10
Probation violation	18	30
Administrative hold/Aftercare revocation	15	25
Drug Court violation	1	2
Total	60	100

Length of Stay on March 31, 2007.

<u>LOS in intervals</u>	<u>Youth</u>	<u>Length of Stay</u>		
	<u>Number</u>	<u>Average</u>	<u>Median</u>	<u>Maximum</u>
1 to 3 days	3	3	3	3
4 to 14 days	6	6	4	11
15 to 29 days	6	22	22	27
30 to 59 days	4	38	37	45
60 to 119 days	1	74	74	74
120 to 179 days	0	.	.	.
180 plus days	0	.	.	.
Summary	20	20	18	74

Legal Status by Average LOS at Snapshot on March 31, 2007.

	<u>Administrative Hold</u>		<u>Sentenced</u>		<u>Total</u>	
	<u>No.</u>	<u>LOS</u>	<u>No.</u>	<u>LOS</u>	<u>No.</u>	<u>LOS</u>
Family Court	4	11	16	22	20	20
30 days or less	3	3	12	14	15	12
31 days or more	1	35	4	47	5	45
Superior Court	0	.	0	.	0	.
120 days or less	0	.	0	.	0	.
121 days or more	0	.	0	.	0	.
Total	4	11	16	22	20	20

Population Demographics on March 31, 2007.

Race/ethnicity and age	Total	
	Number	Percent
African American		
15	4	20
16	3	15
17	4	20
18	2	10
Subtotal	13	65
White		
15	1	5
17	5	25
18	1	5
Subtotal	7	35
Total	20	100

Youth's Involvement on March 31, 2007.

Administrative hold	Number	LOS in days
Aftercare	4	11
Sentenced		
Aftercare	2	4
Child Mental Health	0	.
Division of Family Services	0	.
Serious Juvenile Offender and Comprehensive Aftercare Program	2	4
Indefinite sentences	16	22
Superior Court	0	.

Releases, Third Quarter 2007.

To whom released/program	Number	Percent	LOS in days	
			Mean	Maximum
Child Mental Health, Red Lion RTC	1	2	29	29
Community Services, Mountain Manor	1	2	15	15
Community Services, P.C.S. Multisystemic T.	1	2	43	43
Community Services, P.S.F. Electronic Monitoring	1	2	3	3
Community Services, P.S.F. Day Treatment	1	2	29	29
Community Services, Project Stay Free ICCP	1	2	3	3
Community Services, VisionQuest FCIM	3	5	12	29
Community Services, Youth Services Agency	1	2	23	23
Parent	46	78	26	49
Probation	1	2	30	30
YRS, New Castle County Detention Center	1	2	4	4
Total	58	100	25	49

Legal Status by Average LOS at Release, Third Quarter 2007.

	Administrative Hold		Sentenced		Total	
	No.	LOS	No.	LOS	No.	LOS
Family Court	20	7	38	34	58	25
30 days or less	19	5	14	25	33	13
31 days or more	1	47	24	39	25	40
Superior Court	0	.	0	.	0	.
120 days or less	0	.	0	.	0	.
121 days or more	0	.	0	.	0	.
Total	20	7	38	34	58	25

Crime Category at Release, Third Quarter 2007.

Category	Number	Percent	LOS in days	
			Mean	Maximum
Violent felony	16	28	37	47
Non-violent felony	2	3	41	44
Non-violent misdemeanor	5	9	38	43
Probation violation	16	28	30	44
Administrative hold/Aftercare revocation	18	31	4	16
Drug Court violation	1	2	15	15
Total	58	100	25	47