



STATE OF DELAWARE
EXECUTIVE DEPARTMENT
OFFICE OF MANAGEMENT AND BUDGET

To: John Frazer
From: Jorge Rodríguez-Labarca
Date: December 18, 2007
Subject: Second Quarter 2007 Mowlds Cottage Status Report

Admissions: There were 53 admissions during the second quarter of 2007.

Admission demographics: Thirty-nine African Americans, 10 whites and four Hispanics were admitted during the second quarter.

Leading charges at admission: The most frequent leading charges at admission for the second quarter were: administrative hold, 19; violation of probation, 6; and, possession with intent to deliver narcotics, 4. Twenty-eight percent, or 15 youth, were admitted for violent felonies.

Length of stay: On June 30, there were 15 Family Court youth at Mowlds Cottage with an average length of stay (LOS) of 15 days, a median LOS of 12 days, and a maximum LOS of 31 days.

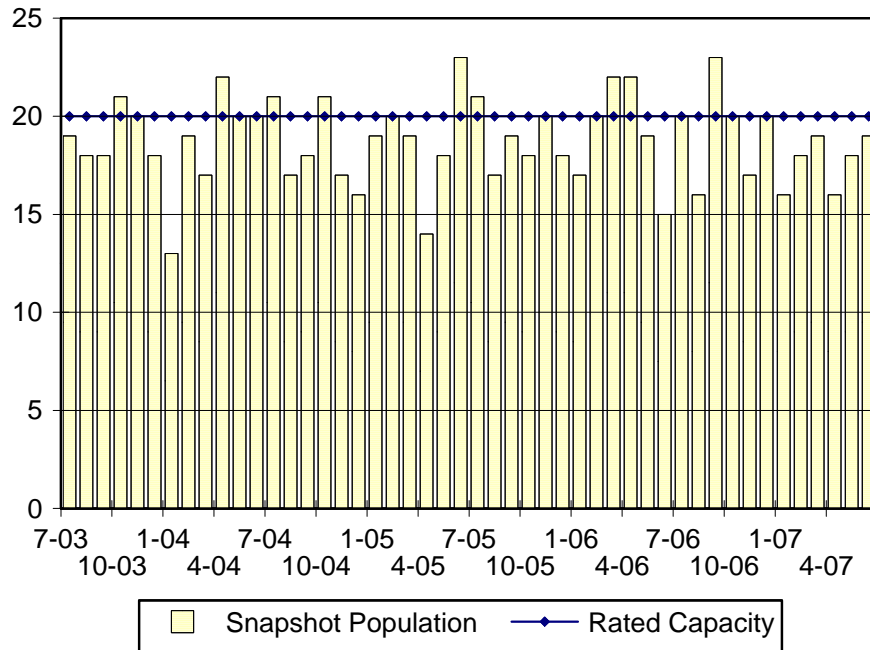
Snapshot demographics: Of the 15 youth at Mowlds Cottage, there were 12 African Americans, two whites, and one Hispanic.

Youth's status: Nine youth were serving indefinite Family Court sentences while six youth were serving administrative sanctions.

Releases: 57 youth were released during the second quarter of 2007 with an average LOS of 29 days and a maximum LOS of 64 days.

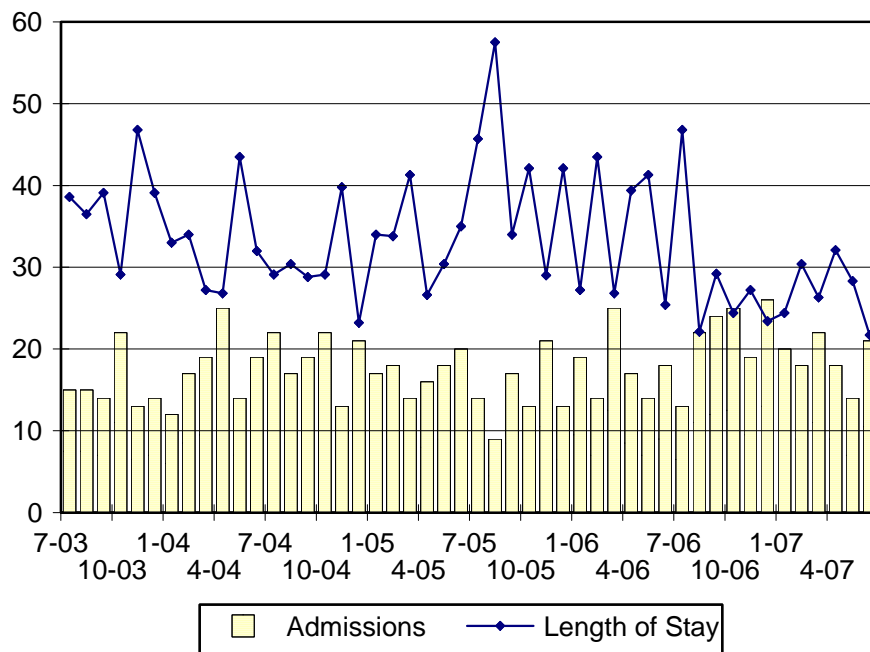


Mowlds Cottage Snapshot Population and Rated Capacity



Snapshot populations are taken at the end of any given month.

Mowlds Cottage Admissions and Time Served



Length of Stay: Average time in days at the Mowlds for youth given monthly admissions and snapshot populations.

Admissions, Second Quarter 2007.

Month	Number	Percent
April	18	34
May	14	26
June	21	40
Total	53	100

Admission Demographics, Second Quarter 2007.

Race/ethnicity and age	Total	
	Number	Percent
African American		
13	1	2
14	1	2
15	6	11
16	9	17
17	15	28
18	7	13
Subtotal	39	74
Hispanic		
16	2	4
17	2	4
Subtotal	4	8
White		
15	2	4
16	2	4
17	4	8
18	2	4
Subtotal	10	19
Total	53	100

Admissions Profile for
Second Quarter 2007 Mowlds Cottage Admittees

Admissions	<u>Youth</u>			<u>Admissions</u>		
	Number	Percent	Cum. %	Number	Percent	Cum. %
Total	53	100	100	445	100	100
First admission	0	.	.	0	.	.
Multiple admissions	53	100	100	445	100	100
2 nd	4	8	8	8	2	2
3 rd	6	11	19	18	4	6
4 th	9	17	36	36	8	14
5 th	1	2	38	5	1	15
6 th	3	6	43	18	4	19
7 th	5	9	53	35	8	27
8 th	3	6	58	24	5	32
9 th	5	9	68	45	10	42
10 th	2	4	72	20	4	47
11 th	1	2	74	11	2	49
12 th	0	.	74	0	.	49
13 th	1	2	75	13	3	52
14 th	4	8	83	56	13	65
15 th	3	6	89	45	10	75
16 th	0	.	89	0	.	75
17 th	2	4	92	34	8	83
18 th	1	2	94	18	4	87
19 th	1	2	96	19	4	91
20 th	2	4	100	40	9	100

Note: First admission means that, heretofore, a juvenile had never been admitted to Secure Detention, Level III Residential, Level IV, Level V, or Division of Family Services (DFS) and Child Mental Health (CMH) programs that provide residential services. Included in the count of multiple admissions are those admitted to secure detention, Level III Residential, Level IV, Level V, and DFS and CMH programs that provide residential services which are classified by DSCYF as crisis bed; mental health; residential group care; treatment center; residential Interagency Collaborative Team; residential treatment, mental health; and residential treatment, substance abuse.

**Admission Profile by Dispositional
Level for Second Quarter 2007 Mowlds Cottage Admittees**

Admissions	Number and percent of youth							
	Sec. Det.		L. V		L. IV		L. IIIR	
	N.	%	N.	%	N.	%	N.	%
Total	53	100	53	100	53	100	53	100
No prior admissions	7	13	9	17	13	25	8	15
Multiple admissions	46	87	44	83	40	75	45	85
2 nd	16	30	16	30	13	25	14	26
3 rd	7	13	11	21	9	17	9	17
4 th	7	13	5	9	7	13	6	11
5 th	5	9	7	13	4	8	5	9
6 th	3	6	2	4	5	9	5	9
7 th	4	8	3	6	1	2	2	4
8 th	2	4	0	.	0	0	0	0
9 th	0	0	0	0	0	0	2	4
10 th	1	2	0	.	1	2	1	2
11 th	1	2	0	.	0	.	0	0
12 th	0	0	0	0	0	0	0	0
13 th	0	0	0	.	0	0	1	2

Note: Included in the count of multiple admissions are those admitted to Secure Detention (Sec. Det.), Level III Residential (L. IIIR), Level IV, Level V, and Division of Family Services and Child Mental Health programs that provide residential services which are classified by DSCYF as crisis bed; mental health; residential group care; treatment center; residential Interagency Collaborative Team; residential treatment, mental health; and residential treatment, substance abuse.

Reading this table: This table shows that 87 percent of youth admitted to Mowlds Cottage during the second quarter of 2007 had prior admissions to secure detention, 83 percent to Level V, 75 percent to Level IV, and 85 percent to Level IIIR. All youth without prior Level IV admissions had prior admissions to secure detention, Levels IIIR, and/or V.

Leading Charge at Admission, Second Quarter 2007.

Sentenced admissions	Total	Race	
		White	Minority
Administrative hold	19	5	14
Assault in the first degree	1	1	0
Assault in the third degree	1	0	1
Burglary in the second degree	3	1	2
Conspiracy in the second degree	1	0	1
Conspiracy in the third degree	2	0	2
Escape in the third degree	1	1	0
Menacing, aggravated	1	0	1
Possession of a deadly weapon by a person prohibited, firearm	2	0	2
Possession of a deadly weapon during the commission of a felony	1	0	1
Possession of burglary tools	1	0	1
Possession with intent to deliver narcotics	4	1	3
Possession with intent to deliver non-narcotics	1	0	1
Resisting arrest	2	0	2
Robbery in the first degree	2	1	1
Robbery in the second degree	2	0	2
Theft, felony	2	0	2
Unlawful sexual contact in the third degree	1	0	1
Violation of probation	6	0	6
Total	53	10	43

Crime Category at Admission, Second Quarter 2007.

<u>Category</u>	<u>Count</u>	<u>Percent</u>
Violent felony	15	28
Violent misdemeanor	2	4
Non-violent felony	6	11
Non-violent misdemeanor	5	9
Probation violation	6	11
Administrative hold/Aftercare revocation	19	36
Total	53	100

Length of Stay on March 31, 2007.

<u>LOS in intervals</u>	<u>Youth</u>	<u>Length of Stay</u>		
	<u>Number</u>	<u>Average</u>	<u>Median</u>	<u>Maximum</u>
1 to 3 days	4	2	2	3
4 to 14 days	4	11	11	12
15 to 29 days	6	23	24	24
30 to 59 days	1	31	31	31
60 to 119 days	0	.	.	.
120 to 179 days	0	.	.	.
180 plus days	0	.	.	.
Summary	15	15	12	31

Legal Status by Average LOS at Snapshot on March 31, 2007.

	<u>Administrative Hold</u>		<u>Sentenced</u>		<u>Total</u>	
	<u>No.</u>	<u>LOS</u>	<u>No.</u>	<u>LOS</u>	<u>No.</u>	<u>LOS</u>
Family Court	6	7	9	20	15	15
30 days or less	6	7	8	18	14	14
31 days or more	0	.	1	31	1	31
Superior Court	0	.	0	.	0	.
120 days or less	0	.	0	.	0	.
121 days or more	0	.	0	.	0	.
Total	6	7	9	20	15	15

Population Demographics on March 31, 2007.

Race/ethnicity and age	Total	
	Number	Percent
African American		
13	1	7
15	1	7
16	2	13
17	5	33
18	3	20
Subtotal	12	80
Hispanic		
17	1	7
Subtotal	1	7
White		
15	1	7
17	1	7
Subtotal	2	13
Total	15	100

Youth's Involvement on March 31, 2007.

	Number	LOS in days
Administrative hold		
Aftercare	6	7
Sentenced		
Aftercare	2	14
Child Mental Health	0	.
Division of Family Services	1	17
Serious Juvenile Offender and Comprehensive Aftercare Program	2	14
Indefinite sentences	9	20
Superior Court	0	.

Releases, Second Quarter 2007.

To whom released/program	Number	Percent	LOS in days	
			Mean	Maximum
Child Mental Health, Middletown Manor RTC	1	2	3	3
Hennepin County Home School	1	2	4	4
Parent	53	93	29	64
Project Stay Free, electronic monitoring	1	2	55	55
Psychotherapeutic Children's Services, MST	1	2	31	31
Total	57	100	29	64

Legal Status by Average LOS at Release, Second Quarter 2007.

	Administrative Hold		Sentenced		Total	
	No.	LOS	No.	LOS	No.	LOS
Family Court	16	4	41	38	57	29
30 days or less	16	4	7	24	23	10
31 days or more	0	.	34	41	34	41
Superior Court	0	.	0	.	0	.
120 days or less	0	.	0	.	0	.
121 days or more	0	.	0	.	0	.
Total	16	4	41	38	57	29

Crime Category at Release, Second Quarter 2007.

Category	Number	Percent	LOS in days	
			Mean	Maximum
Violent felony	18	32	40	55
Violent misdemeanor	4	7	37	43
Non-violent felony	4	7	49	64
Non-violent misdemeanor	3	5	44	46
Probation violation	13	23	31	38
Administrative hold/Aftercare revocation	15	26	3	4
Total	57	100	29	64