



STATE OF DELAWARE
EXECUTIVE DEPARTMENT
OFFICE OF MANAGEMENT AND BUDGET

To: John Frazer
From: Jorge Rodríguez-Labarca
Date: October 3, 2007
Subject: First Quarter 2007 Mowlds Cottage Status Report

Admissions: There were 60 admissions during the first quarter of 2007.

Admission demographics: Thirty-seven African Americans and 23 whites were admitted during the first quarter.

Leading charges at admission: The most frequent leading charges at admission for the first quarter were: violation of probation, 18, and administrative hold, 15. Twenty-three percent, or 14 youth, were admitted for violent felonies.

Length of stay: On March 31, there were 19 Family Court youth at Mowlds Cottage with an average length of stay (LOS) of 17 days, a median LOS of 17 days, and a maximum LOS of 38 days.

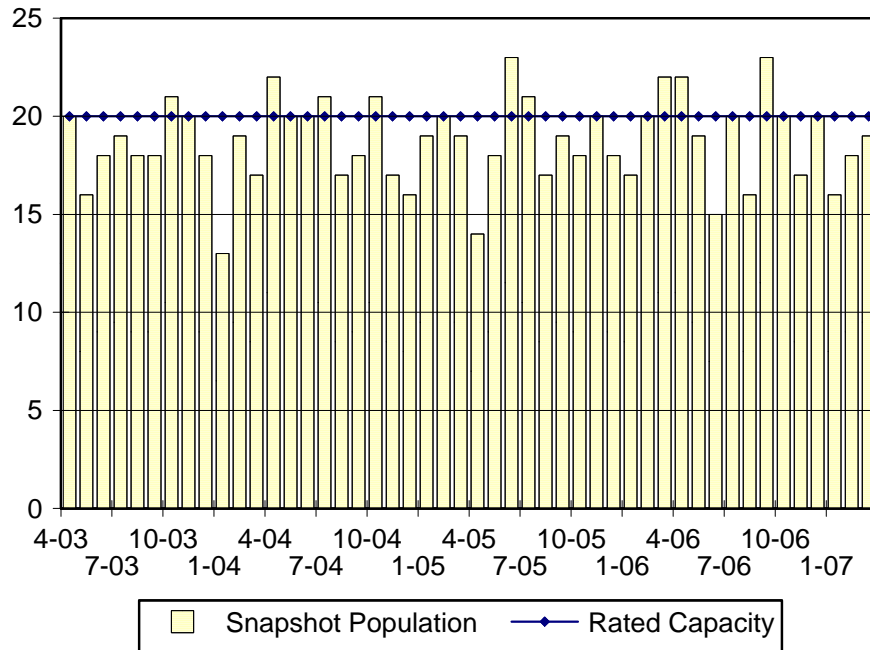
Snapshot demographics: Of the 19 youth at Mowlds Cottage, there were 13 African Americans and six whites.

Youth's status: Eighteen youth were serving indefinite Family Court sentences while one youth was serving administrative sanction.

Releases: 60 youth were released during the first quarter of 2007 with an average LOS of 27 days and a maximum LOS of 73 days.

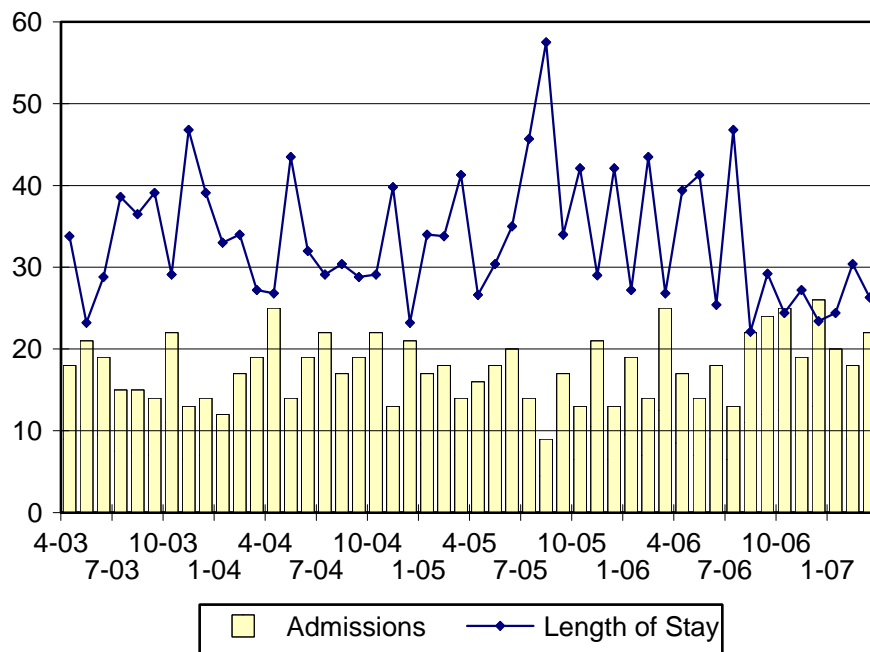


Mowlds Cottage Snapshot Population and Rated Capacity



Snapshot populations are taken at the end of any given month.

Mowlds Cottage Admissions and Time Served



Length of Stay: Average time in days at the Mowlds for youth given monthly admissions and snapshot populations.

Admissions, First Quarter 2007.

Month	Number	Percent
January	20	33
February	18	30
March	22	37
Total	60	100

Admission Demographics, First Quarter 2007.

Race/ethnicity and age	Total	
	Number	Percent
African American		
12	1	2
13	1	2
14	1	2
15	3	5
16	13	22
17	13	22
18	5	8
Subtotal	37	62
White		
14	1	2
15	1	2
16	7	12
17	11	18
18	3	5
Subtotal	23	38
Total	60	100

Admissions Profile for
First Quarter 2007 Mowlds Cottage Admittees

Admissions	<u>Youth</u>			<u>Admissions</u>		
	Number	Percent	Cum. %	Number	Percent	Cum. %
Total	60	100	100	252	100	100
First admission	7	12	12	7	3	3
Multiple admissions	53	88	88	245	97	97
2 nd	12	20	32	24	10	12
3 rd	11	18	50	33	13	25
4 th	8	13	63	32	13	38
5 th	7	12	75	35	14	52
6 th	2	3	78	12	5	57
7 th	5	8	87	35	14	71
8 th	3	5	92	24	10	80
9 th	3	5	97	27	11	91
10 th	1	2	98	10	4	95
11 th	0	.	98	0	.	95
12 th	0	.	98	0	.	95
13 th	1	2	100	13	5	100

Note: First admission means that, heretofore, a juvenile had never been admitted to Secure Detention, Level III Residential, Level IV, Level V, or Division of Family Services (DFS) and Child Mental Health (CMH) programs that provide residential services. Included in the count of multiple admissions are those admitted to secure detention, Level III Residential, Level IV, Level V, and DFS and CMH programs that provide residential services which are classified by DSCYF as crisis bed; mental health; residential group care; treatment center; residential Interagency Collaborative Team; residential treatment, mental health; and residential treatment, substance abuse.

Admission Profile by Dispositional Level for First Quarter 2007 Mowlds Cottage Admittees

Admissions	Number and percent of youth							
	Sec. Det.		L. V		L. IV		L. IIIR	
	N.	%	N.	%	N.	%	N.	%
Total	60	100	60	100	60	100	60	100
No prior admissions	7	12	5	8	12	20	8	13
Multiple admissions	53	88	55	92	48	80	52	87
2 nd	12	20	18	30	17	28	13	22
3 rd	11	18	18	30	11	18	9	15
4 th	8	13	11	18	9	15	10	17
5 th	7	12	5	8	8	13	2	3
6 th	2	3	3	5	2	3	4	7
7 th	5	8	0	.	0	.	4	7
8 th	3	5	0	.	0	.	6	10
9 th	3	5	0	.	0	.	1	2
10 th	1	2	0	.	0	.	0	.
11 th	0	.	0	.	0	.	2	3
12 th	1	2	0	.	1	2	1	2

Note: Included in the count of multiple admissions are those admitted to Secure Detention (Sec. Det.), Level III Residential (L. IIIR), Level IV, Level V, and Division of Family Services and Child Mental Health programs that provide residential services which are classified by DSCYF as crisis bed; mental health; residential group care; treatment center; residential Interagency Collaborative Team; residential treatment, mental health; and residential treatment, substance abuse.

Reading this table: This table shows that 88 percent of youth admitted to Mowlds Cottage during the first quarter of 2007 had prior admissions to secure detention, 92 percent to Level V, 80 percent to Level IV, and 87 percent to Level IIIR. All youth without prior Level IV admissions had prior admissions to secure detention, Levels IIIR, and/or V.

Leading Charge at Admission, First Quarter 2007.

Sentenced admissions	Total	Race	
		White	Minority
Administrative hold, Aftercare revocation	1	0	1
Administrative hold	15	6	9
Assault in a detention facility causing serious injury	1	0	1
Burglary in the second degree	3	3	0
Criminal contempt	1	1	0
Escape in the third degree	2	0	2
Forgery in the second degree	1	1	0
Menacing	1	1	0
Menacing, aggravated	1	0	1
Possession of a deadly weapon by person prohibited, firearm	1	0	1
Possession of a firearm during the commission of a felony	1	0	1
Possession of burglary tools	1	1	0
Possession of drug paraphernalia	1	0	1
Possession or use of a non-narcotic	1	0	1
Possession with intent to deliver narcotics	3	0	3
Receiving stolen property, felony	1	0	1
Receiving stolen property, misdemeanor	1	1	0
Robbery in the first degree	3	1	2
Robbery in the first degree, attempted	1	1	0
Robbery in the second degree	1	1	0
Theft, felony	1	0	1
Violation of probation	18	6	12
Total	60	23	37

Crime Category at Admission, First Quarter 2007.

<u>Category</u>	<u>Count</u>	<u>Percent</u>
Violent felony	14	23
Non-violent felony	5	8
Non-violent misdemeanor	7	12
Probation violation	18	30
Administrative hold/Aftercare revocation	16	27
Total	60	100

Length of Stay on March 31, 2007.

<u>LOS in intervals</u>	<u>Youth</u>	<u>Length of Stay</u>		
	<u>Number</u>	<u>Average</u>	<u>Median</u>	<u>Maximum</u>
1 to 3 days	3	3	3	3
4 to 14 days	5	9	10	13
15 to 29 days	9	22	23	26
30 to 59 days	2	38	38	38
60 to 119 days	0	.	.	.
120 to 179 days	0	.	.	.
180 plus days	0	.	.	.
Summary	19	17	17	38

Legal Status by Average LOS at Snapshot on March 31, 2007.

	<u>Administrative Hold</u>		<u>Sentenced</u>		<u>Total</u>	
	<u>No.</u>	<u>LOS</u>	<u>No.</u>	<u>LOS</u>	<u>No.</u>	<u>LOS</u>
Family Court	1	13	18	17	19	17
30 days or less	1	13	16	15	17	15
31 days or more	0	.	2	38	2	38
Superior Court	0	.	0	.	0	.
120 days or less	0	.	0	.	0	.
121 days or more	0	.	0	.	0	.
Total	1	13	18	17	19	17

Population Demographics on March 31, 2007.

Race/ethnicity and age	Total	
	Number	Percent
African American		
15	1	5
16	6	32
17	4	21
18	2	11
Subtotal	13	68
White		
15	1	5
16	3	16
17	1	5
18	1	5
Subtotal	6	32
Total	19	100

Youth's Involvement on March 31, 2007.

Administrative hold	Number	LOS in days
Aftercare	1	13
Sentenced		
Aftercare	0	.
Child Mental Health	3	26
Division of Family Services	1	23
Serious Juvenile Offender and Comprehensive Aftercare Program	6	21
Indefinite sentences	18	17
Superior Court	0	.

Releases, First Quarter 2007.

To whom released/program	Number	Percent	LOS in days	
			Mean	Maximum
Aftercare	2	3	43	50
Awol status	2	3	39	52
Child, Inc.	2	3	30	32
New Castle County Detention Center	1	2	20	20
Parent	50	83	27	73
Project Stay Free, electronic monitoring	1	2	33	33
Relative	1	2	3	3
VisionQuest, FICM	1	2	15	15
Total	60	100	27	73

Legal Status by Average LOS at Release, First Quarter 2007.

	Administrative Hold		Sentenced		Total	
	No.	LOS	No.	LOS	No.	LOS
Family Court	18	4	42	37	60	27
30 days or less	18	4	8	25	26	11
31 days or more	0	.	34	40	34	40
Superior Court	0	.	0	.	0	.
120 days or less	0	.	0	.	0	.
121 days or more	0	.	0	.	0	.
Total	18	4	42	37	60	27

Crime Category at Release, First Quarter 2007.

Category	Number	Percent	LOS in days	
			Mean	Maximum
Violent felony	15	25	38	50
Violent misdemeanor	2	3	31	31
Non-violent felony	4	7	33	43
Non-violent misdemeanor	8	13	37	52
Traffic misdemeanor	1	2	73	73
Probation violation	12	20	34	44
Administrative hold/Aftercare revocation	18	30	4	20
Total	60	100	27	73