



STATE OF DELAWARE
EXECUTIVE DEPARTMENT
OFFICE OF MANAGEMENT AND BUDGET

To: John Frazer
From: Jorge Rodríguez-Labarca
Date: August 2, 2007
Subject: Fourth Quarter 2006 Mowlds Cottage Status Report

Admissions: There were 70 admissions during the fourth quarter of 2006.

Admission demographics: Fifty-two African Americans, 15 whites and three Hispanics were admitted during the fourth quarter.

Leading charges at admission: The most frequent leading charges at admission for the fourth quarter were: administrative hold, 22; violation of probation, 14; and assault in the second degree, possession with intent to deliver narcotics and robbery in the first degree, 4. 26 percent, or 18 youth, were admitted for violent felonies.

Length of stay: On December 31, there were 20 youth at Mowlds Cottage with an average length of stay (LOS) of 16 days, a median LOS of 13 days, and a maximum LOS of 55 days.

On December 31, there were 20 Family Court youth with an average LOS of 16 days.

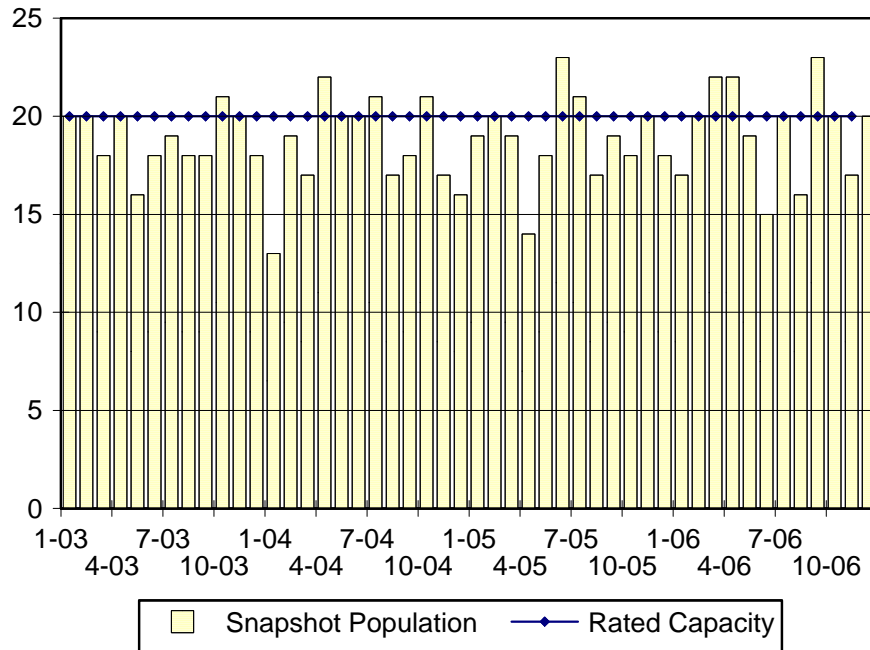
Snapshot demographics: Of the 20 youth at Mowlds Cottage, there were 17 African Americans and three whites.

Youth's status: Seventeen youth were serving indefinite Family Court sentences while three were serving administrative sanctions.

Releases: 75 youth were released during the fourth quarter of 2006 with an average LOS of 27 days and a maximum LOS of 71 days.

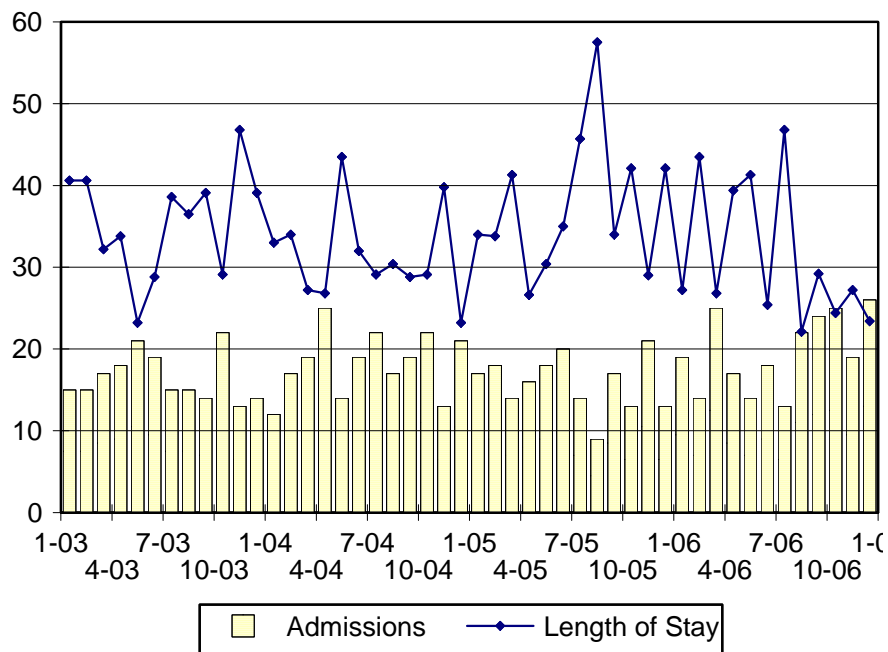


Mowlds Cottage Snapshot Population and Rated Capacity



Snapshot populations are taken at the end of any given month.

Mowlds Cottage Admissions and Time Served



Length of Stay: Average time in days at the Mowlds for youth given monthly admissions and snapshot populations.

Admissions, Fourth Quarter 2006.

Month	Number	Percent
October	25	36
November	19	27
December	26	37
Total	70	100

Admission Demographics, Fourth Quarter 2006.

Race/ethnicity and age	Total	
	Number	Percent
African American		
12	2	3
13	1	1
14	4	6
15	9	13
16	8	11
17	20	29
18	8	11
Subtotal	52	74
Hispanic		
16	1	1
17	2	3
Subtotal	3	4
White		
15	1	1
16	6	6
17	5	5
18	3	3
Subtotal	15	15
Total	70	70

**Admissions Profile for
Fourth Quarter 2006 Mowlds Cottage Admittees**

Admissions	Youth			Admissions		
	Number	Percent	Cum. %	Number	Percent	Cum. %
Total	70	100	100	639	100	100
First admission	0	.	.	0	.	.
Multiple admissions	70	100	100	639	100	100
2 nd	2	3	3	4	1	1
3 rd	6	9	11	18	3	3
4 th	10	14	26	40	6	10
5 th	5	7	33	25	4	14
6 th	7	10	43	42	7	20
7 th	7	10	53	49	8	28
8 th	3	4	57	24	4	32
9 th	5	7	64	45	7	39
10 th	1	1	66	10	2	40
11 th	4	6	71	44	7	47
12 th	2	3	74	24	4	51
13 th	3	4	79	39	6	57
14 th	0	.	79	0	.	57
15 th	2	3	81	30	5	62
16 th	4	6	87	64	10	72
17 th	1	1	89	17	3	74
18 th	3	4	93	54	8	83
19 th	1	1	94	19	3	86
20 th	1	1	96	20	3	89
21 st	0	.	96	0	.	89
22 nd	1	1	97	22	3	92
23 rd	0	.	97	0	.	92
24 th	1	1	99	24	4	96
...
38 th	1	1	100	25	4	100

Note: First admission means that, heretofore, a juvenile had never been admitted to Secure Detention, Level III Residential, Level IV, Level V, or Division of Family Services (DFS) and Child Mental Health (CMH) programs that provide residential services. Included in the count of multiple admissions are those admitted to secure detention, Level III Residential, Level IV, Level V, and DFS and CMH programs that provide residential services which are classified by DSCYF as crisis bed; mental health; residential group care; treatment center; residential Interagency Collaborative Team; residential treatment, mental health; and residential treatment, substance abuse.

**Admission Profile by Dispositional
Level for Fourth Quarter 2006 Mowlds Cottage Admittees**

Admissions	Number and percent of youth							
	Sec. Det.		L. V		L. IV		L. IIIR	
	N.	%	N.	%	N.	%	N.	%
Total	70	100	70	100	70	100	70	100
No prior admissions	4	6	12	17	15	21	9	13
Multiple admissions	66	94	58	83	55	79	61	87
2 nd	18	26	19	27	19	27	14	20
3 rd	10	14	22	31	15	21	18	26
4 th	10	14	9	13	12	17	7	10
5 th	10	14	4	6	4	6	6	9
6 th	5	7	3	4	2	3	3	4
7 th	4	6	1	1	1	1	4	6
8 th	2	3	0	.	1	1	5	7
9 th	4	6	0	.	0	.	0	.
10 th	2	3	0	.	0	.	3	4
11 th	0	.	0	.	0	.	1	1
12 th	1	1	0	.	1	1	0	.

Note: Included in the count of multiple admissions are those admitted to Secure Detention (Sec. Det.), Level III Residential (L. IIIR), Level IV, Level V, and Division of Family Services and Child Mental Health programs that provide residential services which are classified by DSCYF as crisis bed; mental health; residential group care; treatment center; residential Interagency Collaborative Team; residential treatment, mental health; and residential treatment, substance abuse.

Reading this table: This table shows that 94 percent of youth admitted to Mowlds Cottage during the fourth quarter of 2006 had prior admissions to secure detention, 83 percent to Level V, 79 percent to Level IV, and 87 percent to Level IIIR. All youth without prior Level IV admissions had prior admissions to secure detention, Levels IIIR, and/or V.

Leading Charge at Admission, Fourth Quarter 2006.

Leading charge	
Administrative hold	22
Administrative hold, Aftercare revocation	1
Assault in the second degree	4
Assault in the third degree	3
Burglary in the second degree	3
Criminal impersonation	1
Criminal trespassing in the first degree	1
Disorderly conduct	1
Leaving scene of accident	1
Motor vehicle must have proof of insurance	1
Possession of a deadly weapon by person prohibited	1
Possession of a deadly weapon by person prohibited, firearm	3
Possession with intent to deliver narcotics	4
Reckless endangering in the first degree	1
Robbery in the first degree	4
Robbery in the second degree	2
Shoplifting, misdemeanor	1
Theft, misdemeanor	1
Unauthorized use of a motor vehicle	1
Violation of probation	14
<hr/> Total	<hr/> 70

Crime Category at Admission, Fourth Quarter 2006.

Category	Count	Percent
Violent felony	18	26
Violent misdemeanor	3	4
Non-violent felony	4	6
Non-violent misdemeanor	6	9
Traffic misdemeanor	2	3
Probation violation	14	20
Administrative hold/Aftercare revocation	23	33
Total	70	100

Length of Stay on December 31, 2006.

LOS in intervals	<u>Youth</u>	<u>Length of Stay</u>		
	Number	Average	Median	Maximum
1 to 3 days	3	3	3	3
4 to 14 days	8	10	11	14
15 to 29 days	6	19	18	25
30 to 59 days	3	41	35	55
60 to 119 days	0	.	.	.
120 to 179 days	0	.	.	.
180 plus days	0	.	.	.
Summary	20	16	13	55

Legal Status by Average LOS at Snapshot on December 31, 2006.

	<u>Administrative Hold</u>		<u>Sentenced</u>		<u>Total</u>	
	No.	LOS	No.	LOS	No.	LOS
Family Court	3	3	17	18	20	16
30 days or less	3	3	14	14	17	12
31 days or more	0	.	3	41	3	41
Superior Court	0	.	0	.	0	.
120 days or less	0	.	0	.	0	.
121 days or more	0	.	0	.	0	.
Total	3	3	17	18	20	16

Population Demographics on December 31, 2006.

Race/ethnicity and age	Total	
	Number	Percent
African American		
14	2	10
15	1	5
16	3	15
17	6	30
18	5	25
Subtotal	17	85
White		
15	1	5
16	1	5
18	1	5
Subtotal	3	15
Total	20	100

Youth's Involvement on December 31, 2006.

Administrative hold	Number	LOS in days
Aftercare	3	3
Sentenced	Number	LOS in days
Aftercare	4	24
Child Mental Health	1	18
Division of Family Services	0	.
Serious Juvenile Offender and Comprehensive Aftercare Program	7	20
Indefinite sentences	17	18
Superior Court	0	.

Releases, Fourth Quarter 2006.

To whom released/program	Number	Percent	LOS in days	
			Mean	Maximum
Aftercare	2	3	3	3
Community Services, Camelot	1	1	4	4
Community Services, Hennepin County School	2	3	5	6
Community Services, Ministry of Caring	1	1	44	44
Community Services, Project Stay Free	2	3	9	14
Maryland authorities	1	1	56	56
Parent	64	85	28	71
Probation	1	1	50	50
YRS, New Castle County Detention Center	1	1	56	56
Total	75	100	27	71

Legal Status by Average LOS at Release, Fourth Quarter 2006.

	Administrative Hold		Sentenced		Total	
	No.	LOS	No.	LOS	No.	LOS
Family Court	24	4	51	39	75	27
30 days or less	24	4	10	21	34	9
31 days or more	0	.	41	43	41	43
Superior Court	0	.	0	.	0	.
120 days or less	0	.	0	.	0	.
121 days or more	0	.	0	.	0	.
Total	24	4	51	39	75	27

Crime Category at Release, Fourth Quarter 2006.

Category	Number	Percent	LOS in days	
			Mean	Maximum
Violent felony	24	32	41	64
Violent misdemeanor	1	1	36	36
Non-violent felony	5	7	45	50
Non-violent misdemeanor	6	8	49	71
Traffic misdemeanor	1	1	30	30
Probation violation	14	19	30	56
Administrative hold/Aftercare revocation	24	32	4	6
Total	75	100	27	71