



STATE OF DELAWARE
EXECUTIVE DEPARTMENT
OFFICE OF MANAGEMENT AND BUDGET

To: John Frazer
From: Jorge Rodríguez-Labarca
Date: December 1, 2006
Subject: Third Quarter 2006 Mowlds Cottage Status Report

Admissions: There were 59 admissions during the third quarter of 2006.

Admission demographics: Thirty-seven African Americans, 18 whites and four Hispanics were admitted during the third quarter.

Leading charges at admission: The most frequent leading charges at admission for the third quarter were: administrative hold, 22; violation of probation, 8; and possession with intent to deliver narcotics, 7. 25 percent, or 15 youth, were admitted for violent felonies.

Length of stay: On September 30, there were 23 youth at Mowlds Cottage with an average length of stay (LOS) of 22 days, a median LOS of 24 days, and a maximum LOS of 52 days.

On September 30, there were 23 Family Court youth with an average LOS of 22 days.

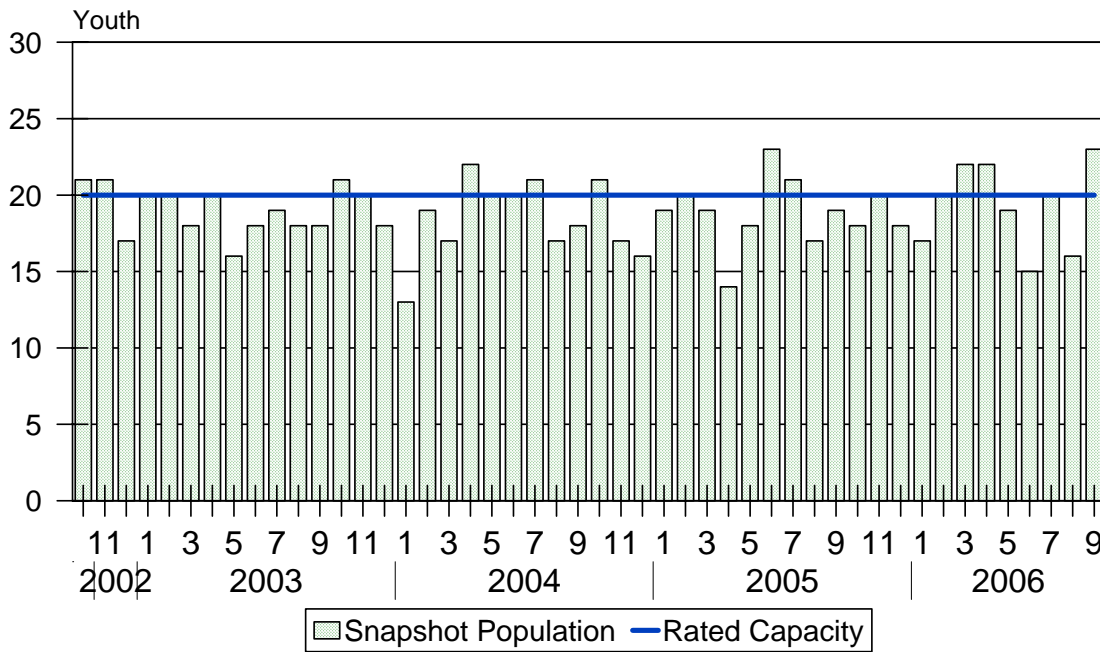
Snapshot demographics: Of the 23 youth at Mowlds Cottage, there were 16 African Americans and seven whites.

Youth's status: Twenty youth were serving indefinite Family Court sentences while three youth were serving administrative sanctions.

Releases: 51 youth were released during the third quarter of 2006 with an average LOS of 29 days and a maximum LOS of 85 days.

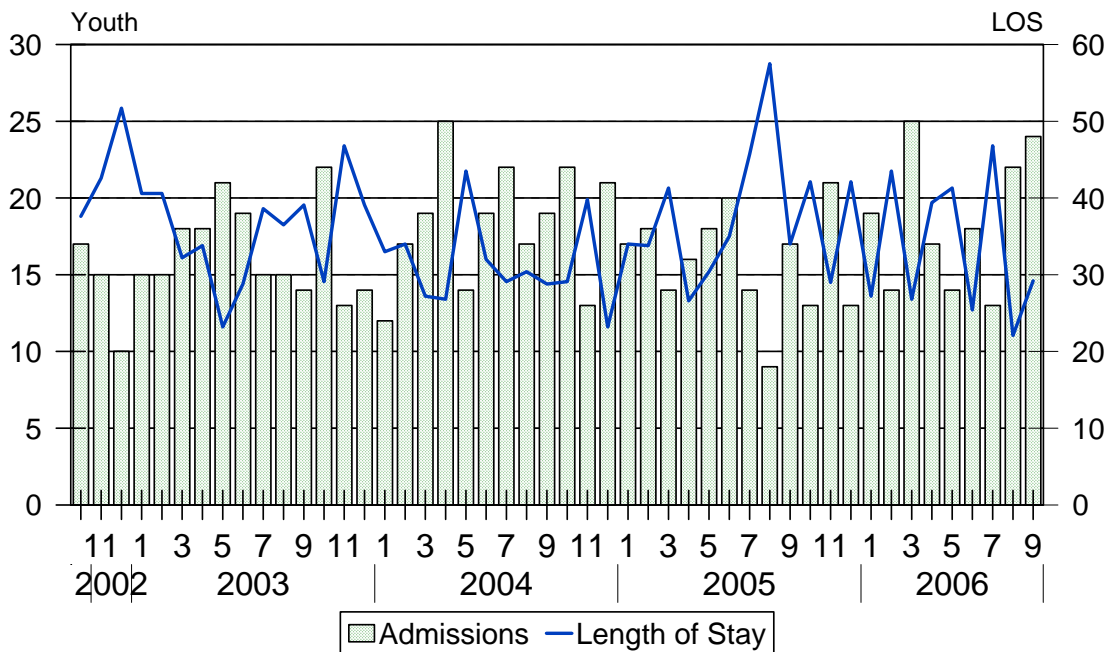


Mowlds Cottage Snapshot Population and Rated Capacity



Snapshot populations are taken at the end of any given month.

Mowlds Cottage Admissions and Time Served



Length of Stay: Average time in days at the Mowlds for youth given monthly admissions and snapshot populations.

Admissions, Third Quarter 2006.

Month	Number	Percent
July	13	22
August	22	37
September	24	24
Total	59	100

Admission Demographics, Third Quarter 2006.

Race/ethnicity and age	Total	
	Number	Percent
African American		
13	1	2
14	2	3
15	3	5
16	11	19
17	18	31
18	2	3
Subtotal	37	63
Hispanic		
15	1	2
16	2	3
17	1	2
Subtotal	4	7
White		
14	1	2
15	2	3
16	5	8
17	6	10
18	4	7
Subtotal	18	31
Total	59	100

**Admissions Profile for
Third Quarter 2006 Mowlds Cottage Admittees**

Admissions	Youth			Admissions		
	Number	Percent	Cum. %	Number	Percent	Cum. %
Total	59	100	100	443	100	100
First admission	0	.	.	0	.	.
Multiple admissions	59	100	100	443	100	100
2 nd	0	.	.	0	.	.
3 rd	4	7	7	12	3	3
4 th	10	17	24	40	9	12
5 th	8	14	37	40	9	21
6 th	11	19	56	66	15	36
7 th	2	3	59	14	3	39
8 th	5	8	68	40	9	48
9 th	3	5	73	27	6	54
10 th	5	8	81	50	11	65
11 th	3	5	86	33	7	73
12 th	3	5	92	36	8	81
13 th	1	2	93	13	3	84
14 th	0	.	93	0	.	84
15 th	0	.	93	0	.	84
16 th	1	2	95	16	4	87
17 th	1	2	97	17	4	91
18 th	1	2	98	18	4	95
19 th	0	.	98	0	.	95
20 th	0	.	98	0	.	95
21 st	1	2	100	21	5	100

Note: First admission means that, heretofore, a juvenile had never been admitted to Secure Detention, Level III Residential, Level IV, Level V, or Division of Family Services (DFS) and Child Mental Health (CMH) programs that provide residential services. Included in the count of multiple admissions are those admitted to secure detention, Level III Residential, Level IV, Level V, and DFS and CMH programs that provide residential services which are classified by DSCYF as crisis bed; mental health; residential group care; treatment center; residential Interagency Collaborative Team; residential treatment, mental health; and residential treatment, substance abuse.

**Admission Profile by Dispositional
Level for Third Quarter 2006 Mowlds Cottage Admittees**

Admissions	Number and percent of youth							
	Sec. Det.		L. V		L. IV		L. IIIR	
	N.	%	N.	%	N.	%	N.	%
Total	59	100	59	100	59	100	59	100
No prior admissions	6	10	4	7	15	25	13	22
Multiple admissions	53	90	55	93	44	75	46	78
2 nd	16	27	22	37	21	36	16	27
3 rd	13	22	18	31	11	19	12	20
4 th	11	19	5	8	6	10	6	10
5 th	4	7	7	12	3	5	8	14
6 th	5	8	2	3	0	.	3	5
7 th	3	5	1	2	1	2	0	.
8 th	1	2	0	.	1	2	1	2
9 th	0	.	0	.	0	.	0	.
10 th	0	.	0	.	1	2	0	.
11 th	0	.	0	.	0	.	0	.
12 th	0	.	0	.	0	.	0	.
13 th	0	.	0	.	0	.	0	.

Note: Included in the count of multiple admissions are those admitted to Secure Detention (Sec. Det.), Level III Residential (L. IIIR), Level IV, Level V, and Division of Family Services and Child Mental Health programs that provide residential services which are classified by DSCYF as crisis bed; mental health; residential group care; treatment center; residential Interagency Collaborative Team; residential treatment, mental health; and residential treatment, substance abuse.

Reading this table: This table shows that 90 percent of youth admitted to Mowlds Cottage during the third quarter of 2006 had prior admissions to secure detention, 93 percent to Level V, 75 percent to Level IV, and 78 percent to Level IIIR. All youth without prior Level IV admissions had prior admissions to secure detention, Levels IIIR, and/or V.

Leading Charge at Admission, Third Quarter 2006.

Leading charge	
Administrative hold	22
Administrative hold, aftercare revocation	1
Assault in the third degree	2
Burglary in the second degree	2
Conspiracy in the second degree	1
Criminal mischief, unclassified misdemeanor	1
Distribution of a controlled substance within 300 feet of a park	2
Escape in the third degree	1
Possession of a deadly weapon by a person prohibited, firearm	3
Possession of a weapon in a safe school zone	1
Possession of drug paraphernalia	1
Possession with intent to deliver narcotics	7
Possession with intent to deliver non-narcotics	1
Receiving a stolen firearm	1
Resisting arrest	1
Robbery in the first degree	1
Robbery in the first degree, attempted	1
Robbery in the second degree	1
Unauthorized use of a motor vehicle	1
Violation of probation	8
Total	59

Crime Category at Admission, Third Quarter 2006.

<u>Category</u>	<u>Count</u>	<u>Percent</u>
Violent felony	15	25
Violent misdemeanor	2	3
Non-violent felony	6	10
Non-violent misdemeanor	5	8
Probation violation	8	14
Administrative hold/Aftercare revocation	23	39
Total	59	100

Length of Stay on September 30, 2006.

<u>LOS in intervals</u>	<u>Youth</u>	<u>Length of Stay</u>		
	<u>Number</u>	<u>Average</u>	<u>Median</u>	<u>Maximum</u>
1 to 3 days	6	3	3	3
4 to 14 days	2	10	10	10
15 to 29 days	7	23	24	25
30 to 59 days	8	39	38	52
60 to 119 days	0	.	.	.
120 to 179 days	0	.	.	.
180 plus days	0	.	.	.
Summary	23	22	24	52

Legal Status by Average LOS at Snapshot on September 30, 2006.

	<u>Administrative Hold</u>		<u>Sentenced</u>		<u>Total</u>	
	<u>No.</u>	<u>LOS</u>	<u>No.</u>	<u>LOS</u>	<u>No.</u>	<u>LOS</u>
Family Court	3	2	20	25	23	22
30 days or less	3	2	12	16	15	13
31 days or more	0	.	8	39	8	39
Superior Court	0	.	0	.	0	.
120 days or less	0	.	0	.	0	.
121 days or more	0	.	0	.	0	.
Total	3	2	20	25	23	22

Population Demographics on September 30, 2006.

Race/ethnicity and age	Total	
	Number	Percent
African American		
14	1	4
16	4	17
17	10	43
18	1	4
Subtotal	16	70
White		
14	1	4
17	3	13
18	3	13
Subtotal	7	30
Total	23	100

Youth's Involvement on September 30, 2006.

Administrative hold	Number	LOS in days
Aftercare	3	2
Sentenced	Number	LOS in days
Aftercare	9	29
Child Mental Health	1	17
Division of Family Services	2	38
Serious Juvenile Offender and Comprehensive Aftercare Program	9	29
Indefinite sentences	20	25
Superior Court	0	.

Releases, Third Quarter 2006.

To whom released/program	Number	Percent	LOS in days	
			Mean	Maximum
Community Services, Ministry Of Caring	3	6	30	85
Community Services, Providence Srvc. Corp.	1	2	72	72
Parent	46	88	29	64
YRS, New Castle County Detention Center	1	2	8	8
Total	51	100	29	85

Legal Status by Average LOS at Release, Third Quarter 2006.

	Administrative Hold		Sentenced		Total	
	No.	LOS	No.	LOS	No.	LOS
Family Court	23	6	28	48	51	29
30 days or less	22	3	0	.	22	3
31 days or more	1	62	28	48	29	48
Superior Court	0	.	0	.	0	.
120 days or less	0	.	0	.	0	.
121 days or more	0	.	0	.	0	.
Total	23	6	28	48	51	29

Crime Category at Release, Third Quarter 2006.

Category	Number	Percent	LOS in days	
			Mean	Maximum
Violent felony	11	22	46	64
Violent misdemeanor	4	8	50	62
Non-violent felony	5	10	43	43
Non-violent misdemeanor	3	6	62	85
Probation violation	6	12	49	72
Administrative hold/Aftercare revocation	22	43	3	8
Total	51	100	29	85