



**STATE OF DELAWARE  
EXECUTIVE DEPARTMENT  
OFFICE OF MANAGEMENT AND BUDGET**

**To:** John Frazer  
**From:** Jorge Rodríguez-Labarca  
**Date:** February 27, 2006  
**Subject:** Fourth Quarter 2005 Mowlds Cottage Status Report

---

*Admissions:* There were 47 admissions during the fourth quarter of 2005.

*Admission demographics:* Thirty-four African Americans and 13 whites were admitted during the fourth quarter.

*Leading charges at admission:* The most frequent leading charges at admission for the fourth quarter were: administrative hold, 12; and burglary in the second degree and possession with intent to deliver narcotics, 4. 32 percent, or 15 youth, were admitted for violent felonies.

*Length of stay:* On December 31, there were 18 youth at Mowlds Cottage with an average length of stay (LOS) of 25 days, a median LOS of 24 days, and a maximum LOS of 59 days.

On December 31, there were 18 Family Court youth with an average LOS of 25 days.

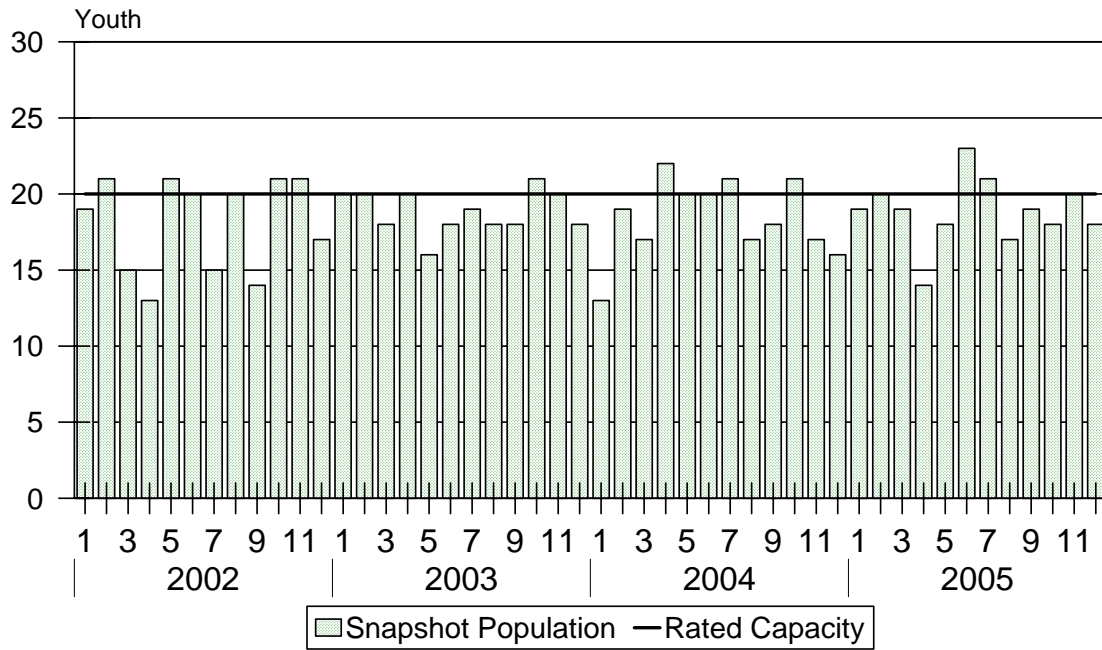
*Snapshot demographics:* Of the 18 youth at Mowlds Cottage, there were 14 African Americans and four whites.

*Youth's status:* Sixteen youth were serving indefinite Family Court sentences while two youth were serving administrative sanctions.

*Releases:* 49 youth were released during the fourth quarter of 2005 with an average LOS of 36 days and a maximum LOS of 159 days.

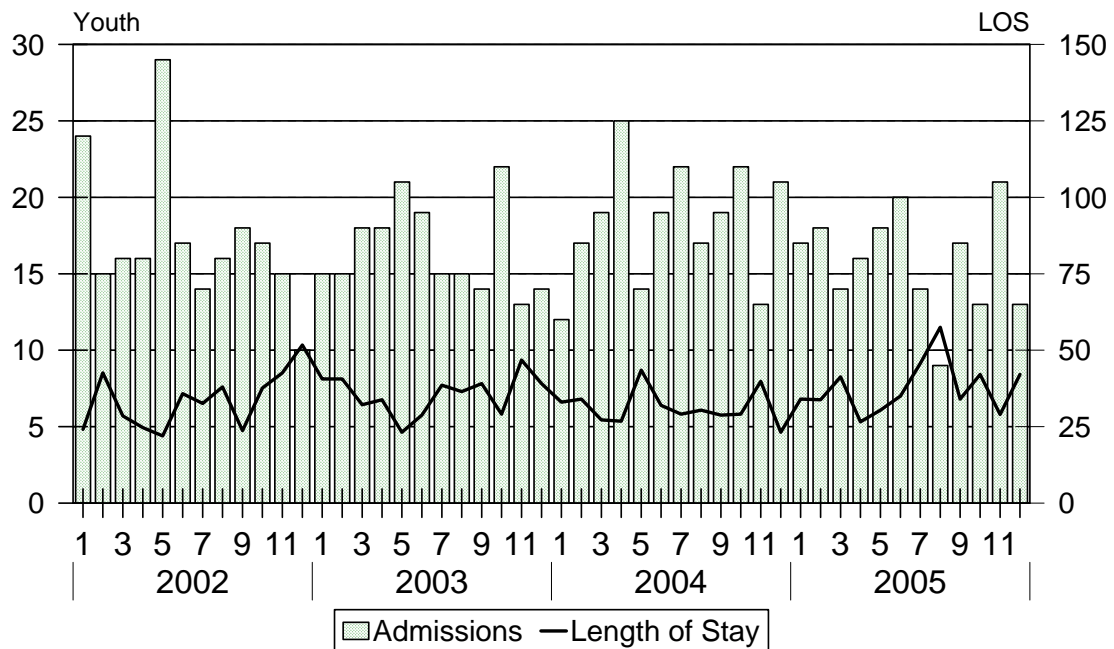


Mowlds Cottage Snapshot Population and Rated Capacity



Snapshot populations are taken at the end of any given month.

Mowlds Cottage Admissions and Time Served



Length of Stay: Average time in days at the Mowlds for youth given monthly admissions and snapshot populations.

Admissions, Fourth Quarter 2005.

Month	Number	Percent
October	13	28
November	21	45
December	13	28
Total	47	100

Admission Demographics, Fourth Quarter 2005.

Race/ethnicity and age	Total	
	Number	Percent
African American		
13	1	2
14	4	9
15	5	11
16	6	13
17	11	23
1	7	15
Subtotal	34	72
White		
15	1	2
16	4	9
17	2	4
18	6	13
Subtotal	13	28
Total	47	100

Admissions Profile for  
Fourth Quarter 2005 Mowlds Cottage Admittees

Admissions	<u>Youth</u>			<u>Admissions</u>		
	Number	Percent	Cum. %	Number	Percent	Cum. %
Total	47	100	100	405	100	100
First admission	0	.	.	0	.	.
Multiple admissions	47	100	100	405	100	100
2 <sup>nd</sup>	0	.	.	0	.	.
3 <sup>rd</sup>	4	9	9	12	3	3
4 <sup>th</sup>	2	4	13	8	2	5
5 <sup>th</sup>	5	11	23	25	6	11
6 <sup>th</sup>	8	17	40	48	12	23
7 <sup>th</sup>	5	11	51	35	9	32
8 <sup>th</sup>	3	6	57	24	6	38
9 <sup>th</sup>	5	11	68	45	11	49
10 <sup>th</sup>	0	.	68	0	.	49
11 <sup>th</sup>	4	9	77	44	11	60
12 <sup>th</sup>	1	2	79	12	3	62
13 <sup>th</sup>	2	4	83	26	6	69
14 <sup>th</sup>	3	6	89	42	10	79
15 <sup>th</sup>	2	4	94	30	7	87
16 <sup>th</sup>	1	2	96	16	4	91
17 <sup>th</sup>	1	2	98	17	4	95
18 <sup>th</sup>	0	.	98	0	.	95
19 <sup>th</sup>	0	.	98	0	.	95
20 <sup>th</sup>	0	.	98	0	.	95
21 <sup>st</sup>	1	2	100	21	5	100

Note: First admission means that, heretofore, a juvenile had never been admitted to Secure Detention, Level III Residential, Level IV, Level V, or Division of Family Services (DFS) and Child Mental Health (CMH) programs that provide residential services. Included in the count of multiple admissions are those admitted to secure detention, Level III Residential, Level IV, Level V, and DFS and CMH programs that provide residential services which are classified by DSCYF as crisis bed; mental health; residential group care; treatment center; residential Interagency Collaborative Team; residential treatment, mental health; and residential treatment, substance abuse.

**Admission Profile by Dispositional  
Level for Fourth Quarter 2005 Mowlds Cottage Admittees**

Admissions	Number and percent of youth							
	Sec. Det.		L. V		L. IV		L. IIIR	
	N.	%	N.	%	N.	%	N.	%
Total	47	100	47	100	47	100	47	100
No prior admissions	4	9	3	6	9	19	11	23
Multiple admissions	43	91	44	94	38	81	36	77
2 <sup>nd</sup>	11	23	9	19	16	34	10	21
3 <sup>rd</sup>	6	13	23	49	10	21	13	28
4 <sup>th</sup>	9	19	6	13	5	11	6	13
5 <sup>th</sup>	2	4	2	4	3	6	3	6
6 <sup>th</sup>	6	13	3	6	3	6	4	9
7 <sup>th</sup>	3	6	0	.	1	2	0	.
8 <sup>th</sup>	4	9	1	2	0	.	0	.
9 <sup>th</sup>	1	2	0	.	0	.	0	.
10 <sup>th</sup>	1	2	0	.	0	.	0	.

Note: Included in the count of multiple admissions are those admitted to Secure Detention (Sec. Det.), Level III Residential (L. IIIR), Level IV, Level V, and Division of Family Services and Child Mental Health programs that provide residential services which are classified by DSCYF as crisis bed; mental health; residential group care; treatment center; residential Interagency Collaborative Team; residential treatment, mental health; and residential treatment, substance abuse.

Reading this table: This table shows that 91 percent of youth admitted to Mowlds Cottage during the fourth quarter of 2005 had prior admissions to secure detention, 94 percent to Level V, 81 percent to Level IV, and 77 percent to Level IIIR. All youth without prior Level IV admissions had prior admissions to secure detention, Levels IIIR, and/or V.

---

 Leading Charge at Admission, Fourth Quarter 2005.
 

---

Leading charge	
Administrative hold	12
Administrative hold, Aftercare revocation	1
Arson in the first degree	1
Assault in detention facility causing injury	2
Assault in the third degree	1
Burglary in the second degree	4
Burglary in the third degree	3
Carrying a concealed deadly weapon	1
Criminal impersonation	2
Criminal mischief, class G felony	1
Menacing	1
Possession or use of a non-narcotic	1
Possession or use of narcotics	2
Possession with intent to deliver narcotics	4
Receiving stolen property, felony	2
Reckless endangering in the first degree	1
Resisting arrest	1
Robbery in the first degree, attempted	1
Robbery in the second degree, attempted	1
Theft, misdemeanor	1
Trafficking in cocaine from ten to 50 grams	1
Violation of probation	3
Total	47

### Crime Category at Admission, Fourth Quarter 2005.

Category	Count	Percent
Violent felony	15	32
Violent misdemeanor	3	6
Non-violent felony	7	15
Non-violent misdemeanor	6	13
Probation violation	3	6
Administrative hold/Aftercare revocation	13	28
<b>Total</b>	<b>47</b>	<b>100</b>

### Length of Stay on December 31, 2005.

LOS in intervals	<u>Youth</u>	<u>Length of Stay</u>		
	Number	Average	Median	Maximum
1 to 3 days	3	2	2	2
4 to 14 days	0	.	.	.
15 to 29 days	8	19	17	24
30 to 59 days	7	42	40	59
60 to 119	0	.	.	.
120 to 179	0	.	.	.
180 plus days	0	.	.	.
<b>Summary</b>	<b>18</b>	<b>25</b>	<b>24</b>	<b>59</b>

### Legal Status by Average LOS at Snapshot on December 31, 2005.

	<u>Administrative Hold</u>		<u>Sentenced</u>		<u>Total</u>	
	No.	LOS	No.	LOS	No.	LOS
Family Court	2	2	16	18	18	25
30 days or less	2	2	9	17	11	15
31 days or more	0	.	7	42	7	42
Superior Court	0	.	0	.	0	.
120 days or less	0	.	0	.	0	.
121 days or more	0	.	0	.	0	.
<b>Total</b>	<b>2</b>	<b>2</b>	<b>16</b>	<b>28</b>	<b>18</b>	<b>25</b>

Population Demographics on December 31, 2005.

Race/ethnicity and age	Total	
	Number	Percent
African American		
14	1	6
15	3	17
16	3	17
17	6	33
18	1	6
Subtotal	14	78
White		
16	1	6
17	1	6
18	2	11
Subtotal	4	22
Total	18	100

Youth's Involvement on December 31, 2005.

Aftercare Revocation	Number	LOS in days
Aftercare	3	7
Sentenced	Number	LOS in days
Aftercare	14	30
Child Mental Health	5	34
Division of Family Services	1	59
Serious Juvenile Offender and Comprehensive Aftercare Program	15	30
Indefinite sentences	16	28
Superior Court	0	.



## Releases, Fourth Quarter 2005.

To whom released/program	Number	Percent	LOS in days	
			Mean	Maximum
AWOL status	3	6	20	37
Child Mental Health	1	2	113	113
Parent	44	90	35	159
Community Services, Ministry of Caring	1	2	35	35
Total	49	100	36	159

## Legal Status by Average LOS at Release, Fourth Quarter 2005.

	Administrative Hold		Sentenced		Total	
	No.	LOS	No.	LOS	No.	LOS
Family Court	15	9	34	47	49	36
30 days or less	13	4	1	3	14	4
31 days or more	2	43	33	49	35	48
Superior Court	0	.	0	.	0	.
120 days or less	0	.	0	.	0	.
121 days or more	0	.	0	.	0	.
Total	15	9	34	47	49	36

## Crime Category at Release, Fourth Quarter 2005.

Category	Number	Percent	LOS in days	
			Mean	Maximum
Violent felony	10	20	36	50
Violent misdemeanor	4	8	43	48
Non-violent felony	8	16	43	67
Non-violent misdemeanor	5	10	59	113
Traffic misdemeanor	1	2	43	43
Probation violation	7	14	63	159
Administrative hold/Aftercare revocation	14	29	7	42
Total	49	100	36	159