



**STATE OF DELAWARE  
EXECUTIVE DEPARTMENT  
OFFICE OF MANAGEMENT AND BUDGET**

**To:** John Frazer  
**From:** Jorge Rodríguez-Labarca  
**Date:** October 15, 2005  
**Subject:** Third Quarter 2005 Mowlds Cottage Status Report

---

*Admissions:* There were 40 admissions during the third quarter of 2005.

*Admission demographics:* 28 African Americans, 12 whites were admitted during the third quarter.

*Leading charges at admission:* The most frequent leading charges at admission for the third quarter were: violation of probation, 11; and, administrative hold, 6. 15 percent, or 6 youth, were admitted for violent felonies.

*Length of stay:* On June 30, there were 19 youth at Mowlds Cottage with an average length of stay (LOS) of 27 days, a median LOS of 16 days, and a maximum LOS of 79 days.

On June 30, there were 19 Family Court youth with an average LOS of 27 days.

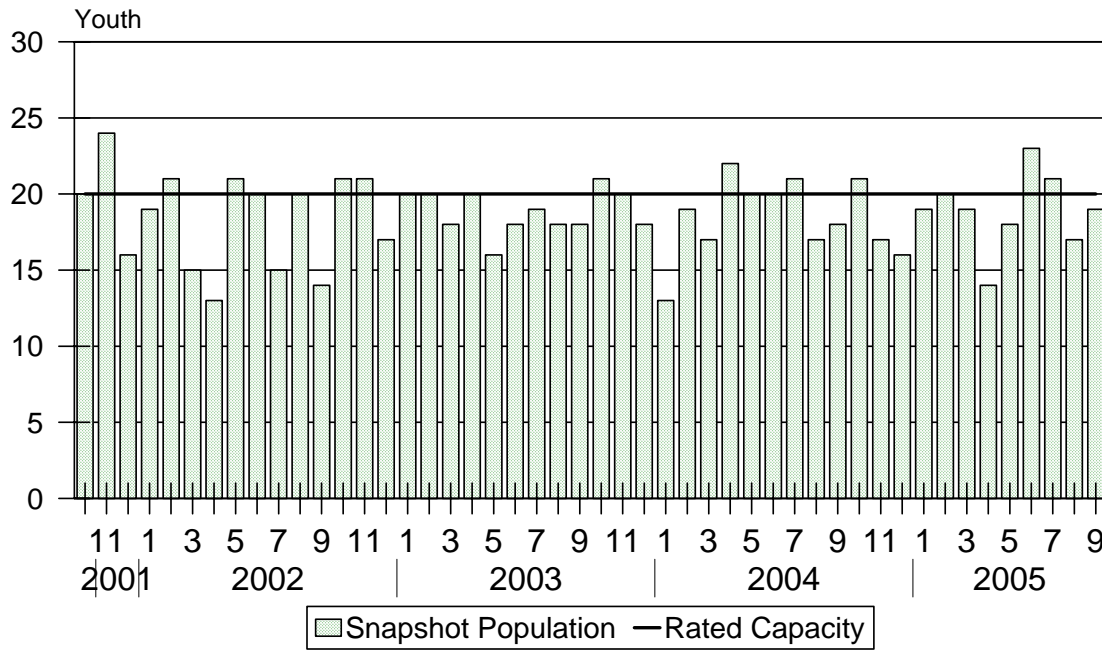
*Snapshot demographics:* Of the 19 youth at Mowlds Cottage, there were 17 African Americans and two whites.

*Youth's status:* 16 youth were serving indefinite Family Court sentences, three youth were serving Aftercare revocation.

*Releases:* 43 youth were released during the third quarter of 2005 with an average LOS of 39 days and a maximum LOS of 75 days.

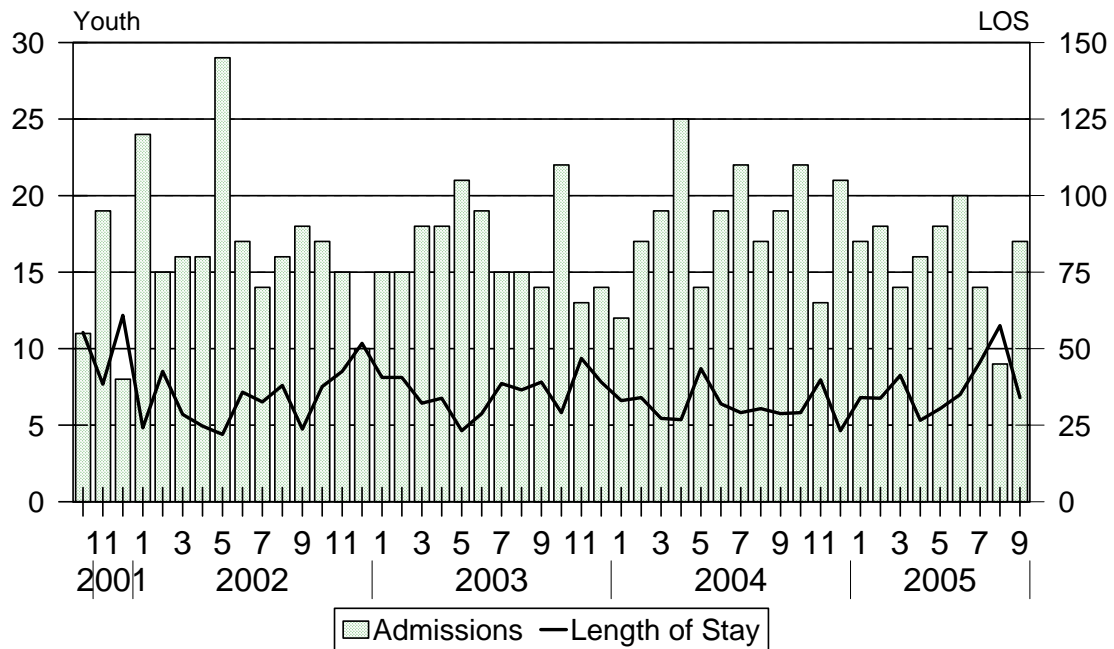


### Mowlds Cottage Snapshot Population and Rated Capacity



Snapshot populations are taken at the end of any given month.

### Mowlds Cottage Admissions and Time Served



Length of Stay: Average time in days at the Mowlds for youth given monthly admissions and snapshot populations.

Admissions, Third Quarter 2005.

Month	Number	Percent
July	14	35
August	9	23
September	17	43
Total	40	100

Admission Demographics, Third Quarter 2005.

Race/ethnicity and age	Total	
	Number	Percent
African American		
14	1	3
15	3	8
16	12	30
17	12	30
Subtotal	28	70
White		
14	2	5
16	1	3
17	6	15
18	3	8
Subtotal	12	30
Total	40	100

**Admissions Profile for  
Third Quarter 2005 Mowlds Cottage Admittees**

Admissions	<u>Youth</u>			<u>Admissions</u>		
	Number	Percent	Cum. %	Number	Percent	Cum. %
Total	40	100	100	345	100	100
First admission	0	.	0	0	.	0
Multiple admissions	40	100	100	345	100	100
2 <sup>nd</sup>	0	.	0	0	.	0
3 <sup>rd</sup>	5	13	13	15	4	4
4 <sup>th</sup>	4	10	23	16	5	9
5 <sup>th</sup>	3	8	30	15	4	13
6 <sup>th</sup>	0	.	30	0	.	13
7 <sup>th</sup>	5	13	43	35	10	23
8 <sup>th</sup>	6	15	58	48	14	37
9 <sup>th</sup>	3	8	65	27	8	45
10 <sup>th</sup>	3	8	73	30	9	54
11 <sup>th</sup>	1	3	75	11	3	57
12 <sup>th</sup>	3	8	83	36	10	68
13 <sup>th</sup>	1	3	85	13	4	71
14 <sup>th</sup>	1	3	88	14	4	75
15 <sup>th</sup>	2	5	93	30	9	84
16 <sup>th</sup>	0	.	93	0	.	84
17 <sup>th</sup>	1	3	95	17	5	89
18 <sup>th</sup>	1	3	98	18	5	94
19 <sup>th</sup>	0	.	98	0	.	94
20 <sup>th</sup>	1	3	100	20	6	100

Note: First admission means that, heretofore, a juvenile had never been admitted to Secure Detention, Level III Residential, Level IV, Level V, or Division of Family Services (DFS) and Child Mental Health (CMH) programs that provide residential services. Included in the count of multiple admissions are those admitted to secure detention, Level III Residential, Level IV, Level V, and DFS and CMH programs that provide residential services which are classified by DSCYF as crisis bed; mental health; residential group care; treatment center; residential Interagency Collaborative Team; residential treatment, mental health; and residential treatment, substance abuse.

**Admission Profile by Dispositional  
Level for Third Quarter 2005 Mowlds Cottage Admittees**

Admissions	Number and percent of youth							
	Sec. Det.		L. V		L. IV		L. IIIR	
	N.	%	N.	%	N.	%	N.	%
Total	40	100	40	100	40	100	40	100
No prior admissions	5	13	12	30	8	20	35	88
Multiple admissions	35	88	28	70	32	80	5	13
2 <sup>nd</sup>	7	18	12	30	20	50	4	10
3 <sup>rd</sup>	4	10	13	33	5	13	1	3
4 <sup>th</sup>	6	15	1	3	2	5	0	.
5 <sup>th</sup>	7	18	1	3	2	5	0	.
6 <sup>th</sup>	5	13	1	3	2	5	0	.
7 <sup>th</sup>	3	8	0	.	0	.	0	.
8 <sup>th</sup>	2	5	0	.	1	3	0	.
9 <sup>th</sup>	0	.	0	.	0	.	0	.
10 <sup>th</sup>	0	.	0	.	0	.	0	.
11 <sup>th</sup>	1	3	0	.	0	.	0	.

Note: Included in the count of multiple admissions are those admitted to Secure Detention (Sec. Det.), Level III Residential (L. IIIR), Level IV, Level V, and Division of Family Services and Child Mental Health programs that provide residential services which are classified by DSCYF as crisis bed; mental health; residential group care; treatment center; residential Interagency Collaborative Team; residential treatment, mental health; and residential treatment, substance abuse.

Reading this table: This table shows that 88 percent of youth admitted to the Mowlds Cottage during the third quarter of 2005 had prior admissions to secure detention, 70 percent to Level V, 80 percent to Level IV, and 13 percent to Level IIIR. All youth without prior Level IV admissions had prior admissions to secure detention, Levels IIIR, and/or V.

---

Leading Charge at Admission, Third Quarter 2005.

---

Leading charge	
Administrative hold	6
Administrative hold, Aftercare revocation	2
Assault in the second degree	1
Assault in a detention facility, causing injury	1
Burglary in the second degree	1
Burglary in the third degree	2
Conspiracy in the second degree	1
Drug Court violation	1
Failure to stop at the command of a police officer	1
Offensive touching	2
Possession of a deadly weapon by a person prohibited, firearm	1
Possession of a deadly weapon during the commission of a felony	1
Possession of a weapon in a safe school zone	1
Possession or use of narcotics	1
Possession with intent to deliver narcotics	1
Reckless endangering in the second degree	1
Resisting arrest	1
Robbery in the first degree	1
Theft, felony	2
Unauthorized use of a motor vehicle	1
Violation of probation	11
Total	40

### Crime Category at Admission, Third Quarter 2005.

Category	Count	Percent
Violent felony	6	15
Violent misdemeanor	2	5
Non-violent felony	7	18
Non-violent misdemeanor	4	10
Traffic misdemeanor	1	3
Probation violation	11	28
Administrative hold/Aftercare revocation	8	20
Drug Court violation	1	3
<b>Total</b>	<b>40</b>	<b>100</b>

### Length of Stay on June 30, 2005.

LOS in intervals	<u>Youth</u>	<u>Length of Stay</u>		
	Number	Average	Median	Maximum
1 to 3 days	5	2	2	3
4 to 14 days	1	9	9	9
15 to 29 days	6	17	16	22
30 to 59 days	4	42	41	58
60 to 119	3	78	79	79
120 to 179	0	.	.	.
180 plus days	0	.	.	.
<b>Summary</b>	<b>19</b>	<b>27</b>	<b>16</b>	<b>79</b>

### Legal Status by Average LOS at Snapshot on June 30, 2005.

	<u>Aftercare Revocation</u>		<u>Sentenced</u>		<u>Total</u>	
	No.	LOS	No.	LOS	No.	LOS
Family Court	3	6	16	31	19	27
30 days or less	3	6	11	15	14	13
31 days or more	0	.	5	68	5	68
Superior Court	0	.	0	.	0	.
120 days or less	0	.	0	.	0	.
121 days or more	0	.	0	.	0	.
<b>Total</b>	<b>3</b>	<b>6</b>	<b>16</b>	<b>31</b>	<b>19</b>	<b>27</b>

Population Demographics on June 30, 2005.

Race/ethnicity and age	<u>Total</u>	
	Number	Percent
African American		
15	3	16
16	6	32
17	8	42
Subtotal	17	89
White		
15	1	5
17	1	5
Subtotal	2	11
Total	19	100

Youth's Involvement on June 30, 2005.

Aftercare Revocation	Number LOS in days	
Aftercare	3	6
Sentenced	Number LOS in days	
Aftercare	5	42
Child Mental Health	2	77
Division of Family Services	1	79
Serious Juvenile Offender and Comprehensive Aftercare Program	12	33
Indefinite sentences	16	31
Superior Court	0	.



## Releases, Third Quarter 2005.

To whom released/program	Number	Percent	LOS in days	
			Mean	Maximum
AWOL status	1	2	39	39
Child Mental Health, Middletown Manor	1	2	2	2
Community Services, Ministry of Caring	3	7	55	71
Parent	38	88	39	75
Total	43	100	39	75

## Legal Status by Average LOS at Release, Third Quarter 2005.

	Administrative Hold		Sentenced		Total	
	No.	LOS	No.	LOS	No.	LOS
Family Court	6	10	36	44	42	39
30 days or less	5	3	1	15	6	5
31 days or more	1	43	35	45	36	45
Superior Court	0	.	1	57	1	57
120 days or less	0	.	1	57	1	57
121 days or more	0	.	0	.	0	.
Total	6	10	37	44	43	39

## Crime Category at Release, Third Quarter 2005.

Category	Number	Percent	LOS in days	
			Mean	Maximum
Violent felony	9	21	40	44
Non-violent felony	9	21	51	75
Non-violent misdemeanor	4	9	40	44
Traffic misdemeanor	1	2	57	57
Probation violation	14	33	42	53
Administrative hold/Aftercare revocation	5	12	3	5
Drug Court violation	1	2	46	46
Total	43	100	39	75