



STATE OF DELAWARE
EXECUTIVE DEPARTMENT
OFFICE OF MANAGEMENT AND BUDGET

To: John Frazer
From: Jorge Rodríguez-Labarca
Date: July 13, 2010
Subject: First Quarter 2010 Ferris School Status Report

Admissions: There were 32 admissions during the first quarter of 2010.

Admission demographics: Of the 32 admissions during the first quarter of 2010, 27 were African American and 5 were white.

Leading charges at admission: The most frequent leading charges at admission for the first quarter were: violation of probation, 5; and, escape in the third degree, 4. Forty-one percent, or 13 youth, were admitted for violent felonies.

Length of stay: On March 31, there were 78 youth at the Ferris School for Boys with an average length of stay (LOS) of 127 days, a median LOS of 112 days, and a maximum LOS of 357 days.

On March 31, there were 77 Family Court youth with an average LOS of 128 days and one pendent jurisdiction youth who had been incarcerated for 34 days.

Snapshot demographics: Of the 78 youth at the Ferris School for Boys, there were 61 African American and 17 whites.

Youth's status: On March 31, one youth was serving sentences from Family and Superior courts, 3 were serving 12 month mandatory sentences, 9 were serving 6 month mandatory sentences, and 65 were serving indefinite sentences.

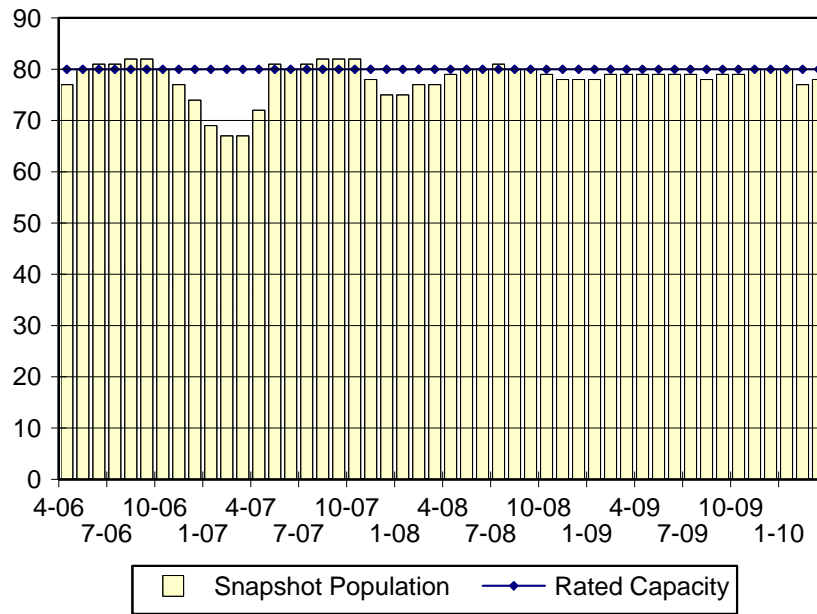
Releases: 34 youth were released during the first quarter of 2010 with an average LOS of 198 days and a maximum LOS at release of 393 days.



Budget Development, Planning and Administration
Statistical Analysis Center

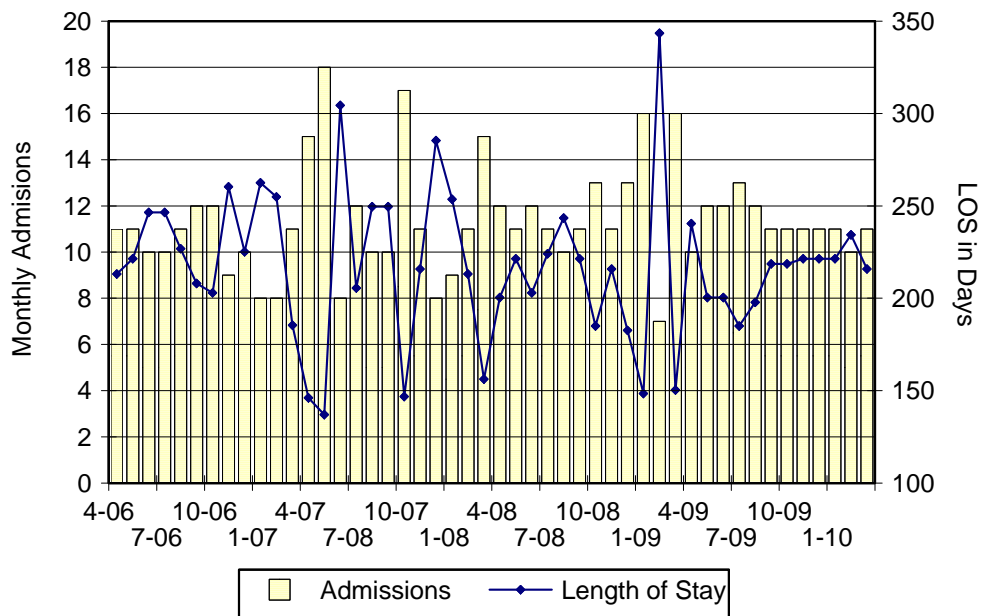
410 Federal Street • Suite 6 • Dover, DE 19901
Phone: (302) 739-4626 • Fax: (302) 739-4630 • www.omb.delaware.gov

Ferris School Snapshot Population and Rated Capacity



Snapshot populations are taken at the end of any given month.

Ferris School Admissions and Time at Ferris School



Length of Stay: Average length of stay in days at the Ferris School given monthly admissions and populations.

Admissions, First Quarter 2010.

Month	Number	Percent
January	11	34
February	10	31
March	11	34
Total	32	100

Admission Demographics, First Quarter 2010.

Race/ethnicity and age	Total	
	Number	Percent
African American		
14	1	3
15	7	22
16	9	28
17	9	28
18	1	3
Subtotal	27	84
White		
15	1	3
17	2	6
18	2	6
Subtotal	5	16
Total	32	100

Admissions Profile for
First Quarter 2010 Ferris School Admittees.

Admissions	<u>Youth</u>			<u>Admissions</u>		
	Number	Percent	Cum. %	Number	Percent	Cum. %
Total	32	100%	100%	198	100%	100%
First admission	0	.	.	0	.	.
Multiple admissions	32	100%	100%	198	100%	100%
2 nd	5	16%	16%	10	5%	5%
3 rd	5	16%	31%	15	8%	13%
4 th	4	13%	44%	16	8%	21%
5 th	5	16%	59%	25	13%	33%
6 th	1	3%	63%	6	3%	36%
7 th	1	3%	66%	7	4%	40%
8 th	2	6%	72%	16	8%	48%
9 th	0	.	72%	0	.	48%
10 th	4	13%	84%	40	20%	68%
11 th	1	3%	88%	11	6%	74%
12 th	0	.	88%	0	.	74%
13 th	4	13%	100%	52	26%	100%

Note: First admission means that, heretofore, a juvenile had never been admitted to Secure Detention, Level III, Level IV, Level V, or Division of Family Services (DFS) and Child Mental Health (CMH) programs that provide residential services. Included in the count of multiple admissions are those admitted to Secure Detention, Level III, Level IV, Level V, and DFS and CMH programs that provide residential services which are classified by DSCYF as crisis bed; mental health; residential group care; treatment center; residential Interagency Collaborative Team; residential treatment, mental health; and residential treatment, substance abuse.

**Admission Profile by Dispositional
Level for First Quarter 2010 Ferris School Admittees.**

Admissions	Number and percent of youth							
	Sec. Det.		L. V		L. IV		L. III	
	N.	%	N.	%	N.	%	N.	%
Total	32	100%	32	100%	32	100%	32	100%
No prior admissions	4	13%	9	28%	12	38%	8	25%
Multiple admissions	28	88%	23	72%	20	63%	24	75%
2 nd	14	44%	18	56%	2	6%	7	22%
3 rd	6	19%	1	3%	11	34%	5	16%
4 th	4	13%	3	9%	1	3%	3	9%
5 th	0	.	0	.	0	.	3	9%
6 th	3	9%	1	3%	4	13%	1	3%
7 th	0	.	0	.	1	3%	3	9%
8 th	1	3%	0	.	0	.	1	3%
9 th	0	.	0	.	1	3%	0	.
10 th	0	.	0	.	0	.	0	.
11 th	0	.	0	.	0	.	1	3%

Note: Included in the count of multiple admissions are those admitted to Secure Detention (Sec. Det.), Level III, Level IV, Level V, and Division of Family Services and Child Mental Health programs that provide residential services which are classified by DSCYF as crisis bed; mental health; residential group care; treatment center; residential Interagency Collaborative Team; residential treatment, mental health; and residential treatment, substance abuse.

Reading this table: This table shows that 88 percent of youth admitted to the Ferris School during the first quarter of 2010 had prior admissions to secure detention, 72 percent to Level V, 63 percent to Level IV, and 75 percent to Level III.

Leading Charge at Admission, First Quarter 2010.

Sentenced admissions	Total	Race	
		White	Minority
Assault in a detention facility causing injury	1	0	1
Assault in the second degree	1	0	1
Assault in the third degree	1	0	1
Burglary in the third degree	1	0	1
Carjacking in the first degree, class B felony	1	0	1
Conspiracy in the second degree	1	0	1
Criminal trespassing in the third degree	1	0	1
Distribution of a controlled substance within 300' of a park	1	0	1
Escape in the third degree	4	2	2
Menacing, aggravated	1	1	0
Possession of a deadly weapon by a person prohibited, firearm	1	0	1
Possession or use of a non-narcotic	2	0	2
Possession with intent to deliver narcotics	2	0	2
Possession with intent to deliver non-narcotics	2	1	1
Receiving stolen property, felony	1	0	1
Resisting arrest with force or violence, class G felony	1	0	1
Robbery in the first degree	2	0	2
Robbery in the second degree	2	0	2
Theft of a firearm	1	0	1
Violation of probation	5	1	4
Total	32	5	27

Crime Category at Admission, First Quarter 2010.

<u>Category</u>	<u>Number</u>	<u>Percent</u>
Violent felony	13	41
Violent misdemeanor	1	3
Non-violent felony	6	19
Non-violent misdemeanor	6	19
Unclassified violation	1	3
Probation violation	5	16
Total	32	100

While 5 youth were admitted solely for a violation of probation (VOP), another 10 had a VOP and an arrest for another crime. A total of 15 youth were charged with a VOP.

Length of Stay on March 31, 2010.

<u>LOS in intervals</u>	<u>Youth</u>	<u>Length of Stay</u>		
	<u>Number</u>	<u>Mean</u>	<u>Median</u>	<u>Maximum</u>
1 to 3 days	0	.	.	.
4 to 14 days	6	11	13	14
15 to 29 days	5	25	27	28
30 to 59 days	10	44	42	55
60 to 119 days	21	91	94	119
120 to 179 days	15	146	146	175
180 plus days	21	247	231	357
Summary	78	127	112	357

Legal Status by Average LOS at Snapshot on March 31, 2010.

	<u>Pendent Jurisdiction</u>		<u>Sentenced</u>		<u>Total</u>	
	<u>No.</u>	<u>LOS</u>	<u>No.</u>	<u>LOS</u>	<u>No.</u>	<u>LOS</u>
Family Court	0	.	77	128	77	128
30 days or less	0	.	11	18	11	18
31 days or more	0	.	66	147	66	147
Superior Court	1	34	0	.	1	34
120 days or less	0	.	0	.	0	.
121 days or more	1	34	0	.	1	34
Total	1	34	77	128	78	127

Population Demographics on March 31, 2010.

Race/ethnicity and age	Total	
	Number	Percent
African American		
13	1	1
14	2	3
15	13	17
16	24	31
17	18	23
18	3	4
Subtotal	61	78
White		
15	1	1
16	4	5
17	8	10
18	4	5
Subtotal	17	22
Total	78	100

Youth's Involvement on March 31, 2010.

Sentenced	No.	LOS
Aftercare	42	134
Child Mental Health	13	155
Division of Family Services	3	179
Probation	7	112
Serious Juvenile Offender and Comprehensive Aftercare Program	2	86
Indefinite sentence	65	113
Mandatory sentence	12	173
Family Court	77	128
Superior Court	1	94

Releases, First Quarter 2010.

To whom released/program	Number	Percent	LOS in days	
			Mean	Maximum
New Castle County Detention Center	4	12	126	289
Mowlds Cottage	30	88	208	393
Total	34	100	198	393

Legal Status by Average LOS at Release, First Quarter 2010.

	Aftercare Revocation		Sentenced		Total	
	No.	LOS	No.	LOS	No.	LOS
Family Court	0	.	34	198	34	198
30 days or less	0	.	1	30	1	30
31 days or more	0	.	33	203	33	203
Superior Court	0	.	0	.	0	.
120 days or less	0	.	0	.	0	.
121 days or more	0	.	0	.	0	.
Total	0	.	34	198	34	198

Crime Category at Release, First Quarter 2010.

Category	Number	Percent	LOS in days		
			Minimum	Mean	Maximum
Violent felony	20	59	30	192	393
Violent misdemeanor	1	3	218	218	218
Non-violent felony	8	24	147	201	289
Non-violent misdemeanor	1	3	231	231	231
Probation violation	4	12	186	207	253
Total	34	100	30	198	393

Distribution of Ferris School Releases by LOS, First Quarter 2010.

