



STATE OF DELAWARE  
EXECUTIVE DEPARTMENT  
OFFICE OF MANAGEMENT AND BUDGET

To: John Frazer  
From: Jorge Rodríguez-Labarca  
Date: February 1, 2010  
Subject: Fourth Quarter 2009 Ferris School Status Report

---

*Admissions:* There were 33 admissions during the fourth quarter of 2009.

Admission demographics: Of the 33 admissions during the fourth quarter of 2009, 23 were African American and 10 were white.

*Leading charges at admission:* The most frequent leading charges at admission for the fourth quarter were: burglary in the second degree and robbery in the first degree, 4; and, attempted robbery in the second degree and possession with intent to deliver narcotics, 3. Fifty-eight percent, or 19 youth, were admitted for violent felonies.

*Length of stay:* On December 31, there were 80 youth at the Ferris School for Boys with an average length of stay (LOS) of 120 days, a median LOS of 113 days, and a maximum LOS of 344 days.

On September 30, there were 80 Family Court youth with an average LOS of 120 days.

*Snapshot demographics:* Of the 80 youth at the Ferris School for Boys, there were 58 African American and 22 whites.

*Youth's status:* On December 31, 18 were serving 12 month mandatory sentences, 4 were serving 6 month mandatory sentences, and 58 were serving indefinite sentences.

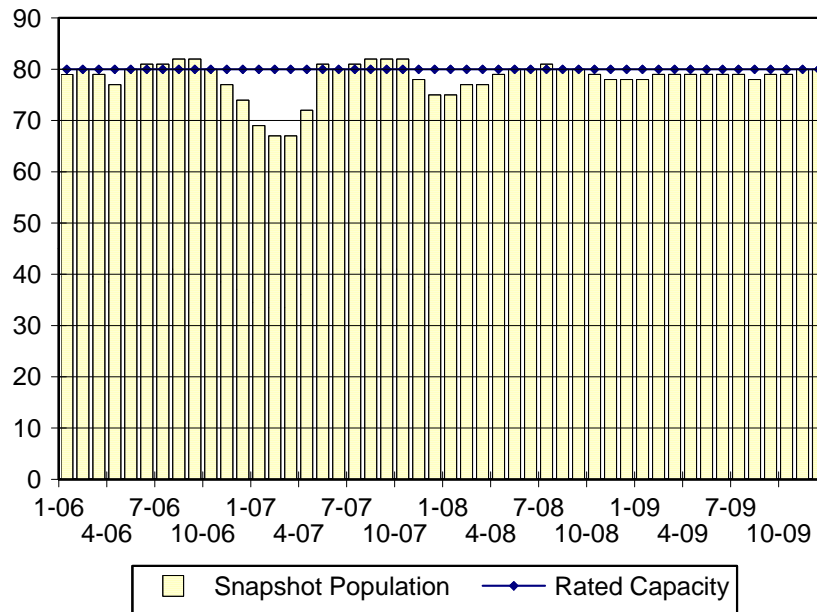
*Releases:* 32 youth were released during the fourth quarter of 2009 with an average LOS of 204 days and a maximum LOS at release of 329 days.



**Budget Development, Planning and Administration**  
**Statistical Analysis Center**

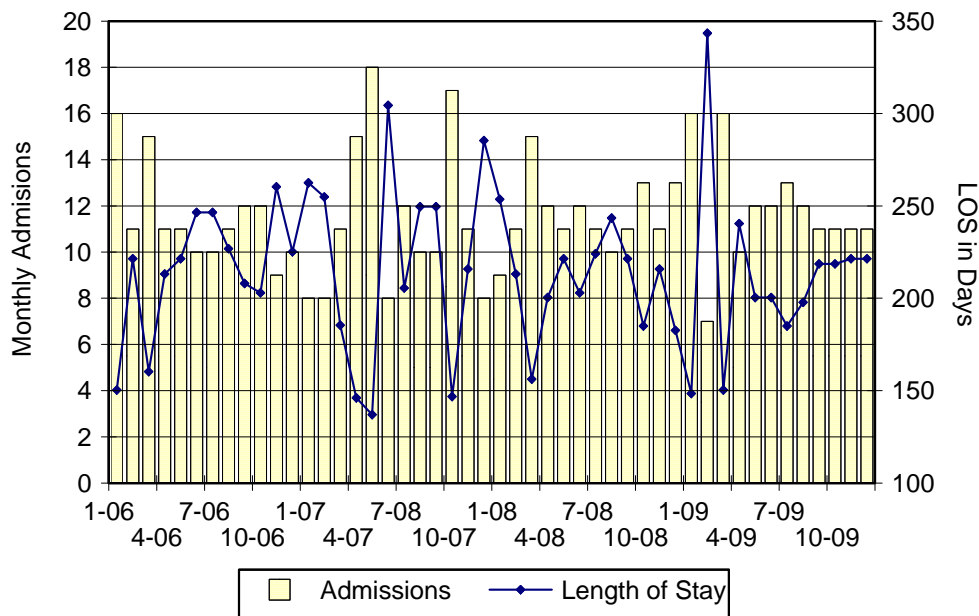
410 Federal Street • Suite 6 • Dover, DE 19901  
Phone: (302) 739-4626 • Fax: (302) 739-4630 • [www.omb.delaware.gov](http://www.omb.delaware.gov)

### Ferris School Snapshot Population and Rated Capacity



Snapshot populations are taken at the end of any given month.

### Ferris School Admissions and Time at Ferris School



Length of Stay: Average length of stay in days at the Ferris School given monthly admissions and populations.

Admissions, Fourth Quarter 2009.

Month	Number	Percent
October	11	33
November	11	33
December	11	33
Total	33	100

Admission Demographics, Fourth Quarter 2009.

Race/ethnicity and age	Total	
	Number	Percent
African American		
15	3	9
16	10	30
17	7	21
18	3	9
Subtotal	23	70
White		
16	4	12
17	5	15
18	1	3
Subtotal	10	30
Total	33	100

**Admissions Profile for  
Fourth Quarter 2009 Ferris School Admittees.**

Admissions	<u>Youth</u>			<u>Admissions</u>		
	Number	Percent	Cum. %	Number	Percent	Cum. %
Total	33	100%	100%	238	100%	100%
First admission	0	.	.	0	.	.
Multiple admissions	33	100%	100%	238	100%	100%
2 <sup>nd</sup>	7	21%	21%	14	6%	6%
3 <sup>rd</sup>	2	6%	27%	6	3%	8%
4 <sup>th</sup>	4	12%	39%	16	7%	15%
5 <sup>th</sup>	1	3%	42%	5	2%	17%
6 <sup>th</sup>	3	9%	52%	18	8%	25%
7 <sup>th</sup>	1	3%	55%	7	3%	28%
8 <sup>th</sup>	3	9%	64%	24	10%	38%
9 <sup>th</sup>	4	12%	76%	36	15%	53%
10 <sup>th</sup>	1	3%	79%	10	4%	57%
11 <sup>th</sup>	2	6%	85%	22	9%	66%
12 <sup>th</sup>	0	.	85%	0	.	66%
13 <sup>th</sup>	2	6%	91%	26	11%	77%
14 <sup>th</sup>	0	.	91%	0	.	77%
15 <sup>th</sup>	0	.	91%	0	.	77%
16 <sup>th</sup>	1	3%	94%	16	7%	84%
17 <sup>th</sup>	0	.	94%	0	.	84%
18 <sup>th</sup>	0	.	94%	0	.	84%
19 <sup>th</sup>	2	6%	100%	38	16%	100%

Note: First admission means that, heretofore, a juvenile had never been admitted to Secure Detention, Level III, Level IV, Level V, or Division of Family Services (DFS) and Child Mental Health (CMH) programs that provide residential services. Included in the count of multiple admissions are those admitted to Secure Detention, Level III, Level IV, Level V, and DFS and CMH programs that provide residential services which are classified by DSCYF as crisis bed; mental health; residential group care; treatment center; residential Interagency Collaborative Team; residential treatment, mental health; and residential treatment, substance abuse.

**Admission Profile by Dispositional  
Level for Fourth Quarter 2009 Ferris School Admittees.**

Admissions	Number and percent of youth							
	Sec. Det.		L. V		L. IV		L. III	
	N.	%	N.	%	N.	%	N.	%
Total	33	100%	33	100%	33	100%	33	100%
No prior admissions	9	27%	0	.	14	42%	6	18%
Multiple admissions	24	73%	33	100%	19	58%	27	82%
2 <sup>nd</sup>	12	36%	26	79%	2	6%	9	27%
3 <sup>rd</sup>	5	15%	6	18%	2	6%	7	21%
4 <sup>th</sup>	3	9%	0	.	4	12%	4	12%
5 <sup>th</sup>	2	6%	1	3%	0	.	3	9%
6 <sup>th</sup>	1	3%	0	.	4	12%	2	6%
7 <sup>th</sup>	0	.	0	.	3	9%	1	3%
8 <sup>th</sup>	1	3%	0	.	1	3%	1	3%
9 <sup>th</sup>	0	.	0	.	1	3%	0	.
10 <sup>th</sup>	0	.	0	.	1	3%	0	.
11 <sup>th</sup>	0	.	0	.	0	.	0	.
12 <sup>th</sup>	0	.	0	.	1	3%	0	.

Note: Included in the count of multiple admissions are those admitted to Secure Detention (Sec. Det.), Level III, Level IV, Level V, and Division of Family Services and Child Mental Health programs that provide residential services which are classified by DSCYF as crisis bed; mental health; residential group care; treatment center; residential Interagency Collaborative Team; residential treatment, mental health; and residential treatment, substance abuse.

Reading this table: This table shows that 73 percent of youth admitted to the Ferris School during the fourth quarter of 2009 had prior admissions to secure detention, 100 percent to Level V, 58 percent to Level IV, and 82 percent to Level III.

Leading Charge at Admission, Fourth Quarter 2009.

Sentenced admissions	Total	Race	
		White	Minority
Assault in a detention facility, causing injury	1	0	1
Assault in the second degree	2	1	1
Assault in the third degree	1	1	0
Breach of conditions of release, felony	1	0	1
Burglary in the second degree	4	2	2
Burglary in the third degree, attempted	1	0	1
Carrying a concealed deadly weapon	1	1	0
Conspiracy in the second degree	2	0	2
Criminal impersonation	1	1	0
Drug court violation	1	0	1
Identity theft	1	0	1
Possession with intent to deliver narcotics	3	2	1
Reckless endangering in the second degree	1	0	1
Robbery in the first degree	4	0	4
Robbery in the first degree, attempted	3	0	3
Robbery in the second degree	2	0	2
Theft of a firearm	1	1	0
Theft, misdemeanor	1	1	0
Violation of probation	2	0	2
<b>Total</b>	<b>33</b>	<b>10</b>	<b>23</b>

### Crime Category at Admission, Fourth Quarter 2009.

<u>Category</u>	<u>Number</u>	<u>Percent</u>
Violent felony	19	58
Violent misdemeanor	2	6
Non-violent felony	7	21
Non-violent misdemeanor	2	6
Drug court violation	1	3
Probation violation	2	6
<b>Total</b>	<b>33</b>	<b>100</b>

While 2 youth were admitted solely for a violation of probation (VOP), another 10 had a VOP and an arrest for another crime. A total of 12 youth were charged with a VOP.

### Length of Stay on December 31, 2009.

<u>LOS in intervals</u>	<u>Youth</u>	<u>Length of Stay</u>		
	<u>Number</u>	<u>Mean</u>	<u>Median</u>	<u>Maximum</u>
1 to 3 days	0	.	.	.
4 to 14 days	3	4	4	4
15 to 29 days	8	21	22	29
30 to 59 days	11	47	46	57
60 to 119 days	19	90	92	113
120 to 179 days	20	142	141	176
180 plus days	19	228	225	344
<b>Summary</b>	<b>80</b>	<b>120</b>	<b>113</b>	<b>344</b>

### Legal Status by Average LOS at Snapshot on December 31, 2009.

	<u>Aftercare Revocation</u>		<u>Sentenced</u>		<u>Total</u>	
	<u>No.</u>	<u>LOS</u>	<u>No.</u>	<u>LOS</u>	<u>No.</u>	<u>LOS</u>
Family Court	0	.	80	120	80	120
30 days or less	0	.	11	16	11	16
31 days or more	0	.	69	136	69	136
Superior Court	0	.	0	.	0	.
120 days or less	0	.	0	.	0	.
121 days or more	0	.	0	.	0	.
<b>Total</b>	<b>0</b>	<b>.</b>	<b>80</b>	<b>120</b>	<b>80</b>	<b>120</b>

Population Demographics on December 31, 2009.

Race/ethnicity and age	Total	
	Number	Percent
African American		
13	1	1
14	2	3
15	11	14
16	22	28
17	19	24
18	3	4
Subtotal	58	73
White		
15	2	3
16	5	6
17	13	16
18	2	3
Subtotal	22	28
Total	80	100

Youth's Involvement on December 31, 2009.

Sentenced	No.	LOS
Aftercare	40	124
Child Mental Health	15	139
Division of Family Services	4	211
Probation	7	118
Serious Juvenile Offender and Comprehensive Aftercare Program	0	.
Indefinite sentence	58	116
Mandatory sentence	22	180
Family Court	80	120
Superior Court	0	.



## Releases, Fourth Quarter 2009.

To whom released/program	Number	Percent	LOS in days	
			Mean	Maximum
Parent	1	3	268	268
Mowlds Cottage	31	97	202	329
Total	32	100	204	329

## Legal Status by Average LOS at Release, Fourth Quarter 2009.

	Aftercare Revocation		Sentenced		Total	
	No.	LOS	No.	LOS	No.	LOS
Family Court	0	.	32	204	32	204
30 days or less	0	.	0	.	0	.
31 days or more	0	.	32	204	32	204
Superior Court	0	.	0	.	0	.
120 days or less	0	.	0	.	0	.
121 days or more	0	.	0	.	0	.
Total	0	.	32	204	32	204

## Crime Category at Release, Fourth Quarter 2009.

Category	Number	Percent	LOS in days		
			Minimum	Mean	Maximum
Violent felony	17	53	155	220	329
Violent misdemeanor	1	3	154	154	154
Non-violent felony	6	19	155	170	190
Non-violent misdemeanor	3	9	193	223	239
Probation violation	5	16	155	192	288
Total	32	100	154	204	329

Distribution of Ferris School Releases by LOS, Fourth Quarter 2009.

