



STATE OF DELAWARE
EXECUTIVE DEPARTMENT
OFFICE OF MANAGEMENT AND BUDGET

To: John Frazer
From: Jorge Rodríguez-Labarca
Date: October 29, 2009
Subject: Second Quarter 2009 Ferris School Status Report

Admissions: There were 34 admissions during the second quarter of 2009.

Admission demographics: Of the 34 admissions during the second quarter of 2009, 21 were African American and 13 were white.

Leading charges at admission: The most frequent leading charges at admission for the second quarter were: robbery in the first degree, 7; and, possession of a firearm by a person prohibited, 6; and, burglary in the second degree and violation of probation, 5. Forty-four percent, or 15 youth, were admitted for violent felonies.

Length of stay: On June 30, there were 79 youth at the Ferris School for Boys with an average length of stay (LOS) of 108 days, a median LOS of 104 days, and a maximum LOS of 321 days.

On June 30, there were 79 Family Court youth with an average LOS of 108 days.

Snapshot demographics: Of the 79 youth at the Ferris School for Boys, there were 61 African American and 18 whites.

Youth's status: On June 30, 15 were serving 12 month mandatory sentences, 17 were serving 6 month mandatory sentences, and 47 were serving indefinite sentences.

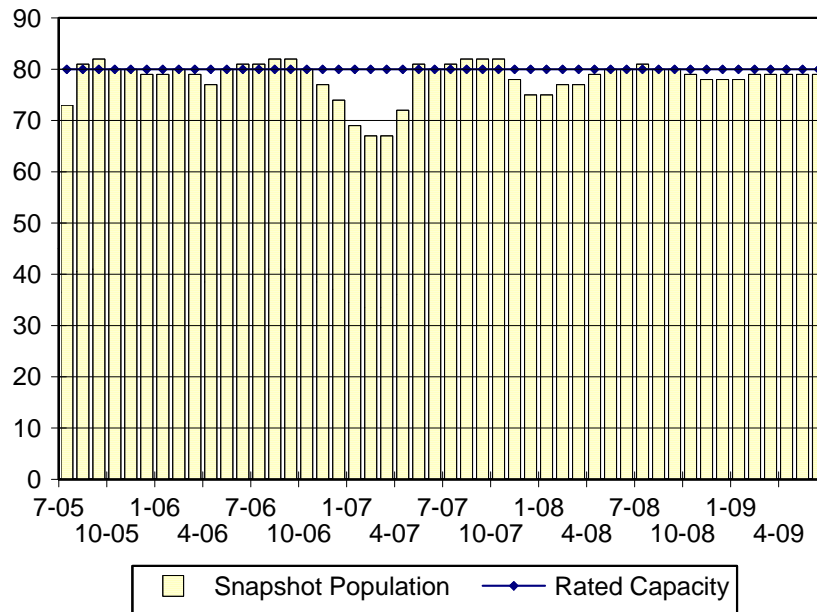
Releases: 34 youth were released during the second quarter of 2009 with an average LOS of 184 days and a maximum LOS at release of 267 days.



Budget Development, Planning and Administration
Statistical Analysis Center

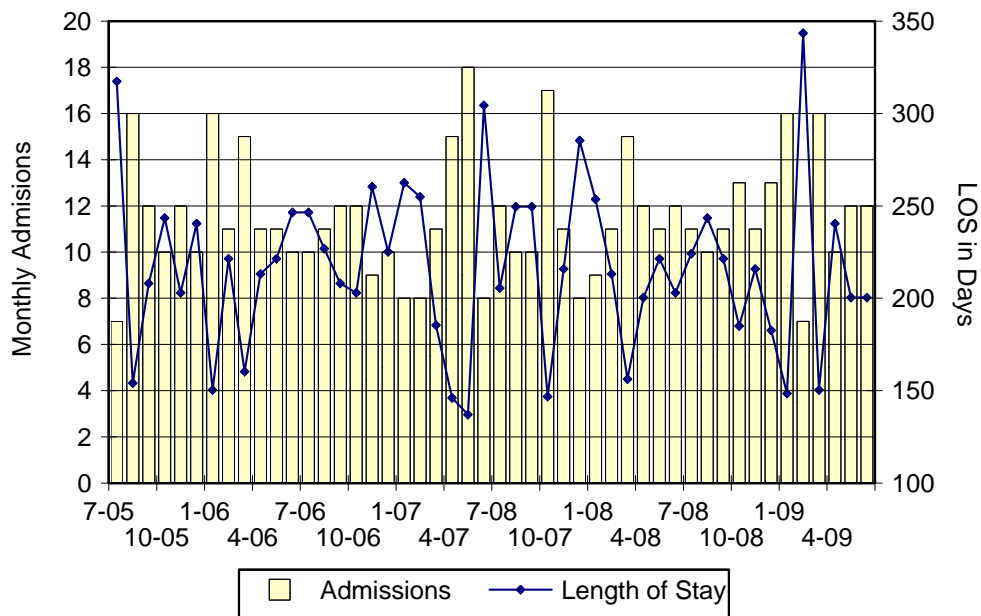
410 Federal Street • Suite 6 • Dover, DE 19901
Phone: (302) 739-4626 • Fax: (302) 739-4630 • www.omb.delaware.gov

Ferris School Snapshot Population and Rated Capacity



Snapshot populations are taken at the end of any given month.

Ferris School Admissions and Time at Ferris School



Length of Stay: Average length of stay in days at the Ferris School given monthly admissions and populations.

Admissions, Second Quarter 2009.

Month	Number	Percent
April	10	29
May	12	35
June	12	35
Total	34	100

Admission Demographics, Second Quarter 2009.

Race/ethnicity and age	Total	
	Number	Percent
African American		
14	2	6
15	3	9
16	5	15
17	11	32
Subtotal	21	62
White		
14	1	3
15	2	6
16	2	6
17	7	21
18	1	3
Subtotal	13	38
Total	34	100

Admissions Profile for
Second Quarter 2009 Ferris School Admittees.

Admissions	<u>Youth</u>			<u>Admissions</u>		
	Number	Percent	Cum. %	Number	Percent	Cum. %
Total	34	100%	100%	226	100%	100%
First admission	0	0%	0%	0	0%	0%
Multiple admissions	34	100%	100%	226	100%	100%
2 nd	8	24%	24%	16	7%	7%
3 rd	8	24%	47%	24	11%	18%
4 th	1	3%	50%	4	2%	19%
5 th	1	3%	53%	5	2%	22%
6 th	0	.	53%	0	.	22%
7 th	3	9%	62%	21	9%	31%
8 th	3	9%	71%	24	11%	42%
9 th	1	3%	74%	9	4%	46%
10 th	2	6%	79%	20	9%	54%
11 th	1	3%	82%	11	5%	59%
12 th	1	3%	85%	12	5%	65%
13 th	1	3%	88%	13	6%	70%
14 th	2	6%	94%	28	12%	83%
...	.	.	94%	.	.	83%
18 th	1	3%	97%	18	8%	91%
...	.	.	97%	.	.	91%
21 st	1	3%	100%	21	9%	100%

Note: First admission means that, heretofore, a juvenile had never been admitted to Secure Detention, Level III, Level IV, Level V, or Division of Family Services (DFS) and Child Mental Health (CMH) programs that provide residential services. Included in the count of multiple admissions are those admitted to Secure Detention, Level III, Level IV, Level V, and DFS and CMH programs that provide residential services which are classified by DSCYF as crisis bed; mental health; residential group care; treatment center; residential Interagency Collaborative Team; residential treatment, mental health; and residential treatment, substance abuse.

**Admission Profile by Dispositional
Level for Second Quarter 2009 Ferris School Admittees.**

Admissions	Number and percent of youth							
	Sec. Det.		L. V		L. IV		L. III	
	N.	%	N.	%	N.	%	N.	%
Total	34	100%	34	100%	34	100%	34	100%
No prior admissions	13	38%	0	0%	19	56%	11	32%
Multiple admissions	21	62%	34	100%	15	44%	23	68%
2 nd	9	26%	30	88%	0	0%	6	18%
3 rd	4	12%	2	6%	1	3%	9	26%
4 th	4	12%	1	3%	4	12%	2	6%
5 th	2	6%	0	.	4	12%	1	3%
6 th	1	3%	1	3%	2	6%	2	6%
7 th	0	.	0	.	4	12%	1	3%
8 th	1	3%	0	.	0	.	1	3%
9 th	0	.	0	.	0	.	1	3%

Note: Included in the count of multiple admissions are those admitted to Secure Detention (Sec. Det.), Level III, Level IV, Level V, and Division of Family Services and Child Mental Health programs that provide residential services which are classified by DSCYF as crisis bed; mental health; residential group care; treatment center; residential Interagency Collaborative Team; residential treatment, mental health; and residential treatment, substance abuse.

Reading this table: This table shows that 62 percent of youth admitted to the Ferris School during the second quarter of 2009 had prior admissions to secure detention, 100 percent to Level V, 44 percent to Level IV, and 68 percent to Level III.

Leading Charge at Admission, Second Quarter 2009.

Sentenced admissions	Total	Race	
		White	Minority
Burglary in the second degree	5	3	2
Criminal impersonation	1	0	1
Escape in the third degree	1	0	1
Possession of a deadly weapon by person prohibited	1	0	1
Possession of a deadly weapon by person prohibited, firearm	6	3	3
Possession with intent to deliver narcotics	1	0	1
Possession with intent to deliver non-narcotics	2	1	1
Robbery in the first degree	7	2	5
Shoplifting, misdemeanor	1	0	1
Theft of a firearm	1	1	0
Theft, felony	1	0	1
Theft, misdemeanor	1	0	1
Unlawful sexual contact in the third degree	1	1	0
Violation of probation	5	2	3
Total	34	13	21

Crime Category at Admission, Second Quarter 2009.

<u>Category</u>	<u>Number</u>	<u>Percent</u>
Violent felony	15	44
Violent misdemeanor	1	3
Non-violent felony	9	26
Non-violent misdemeanor	4	12
Probation violation	5	15
Total	34	100

While 5 youth were admitted solely for a violation of probation (VOP), another 3 had a VOP and an arrest for another crime. A total of 8 youth were charged with a VOP.

Length of Stay on June 30, 2009.

<u>LOS in intervals</u>	<u>Youth</u>	<u>Length of Stay</u>		
	<u>Number</u>	<u>Mean</u>	<u>Median</u>	<u>Maximum</u>
1 to 3 days	0	.	.	.
4 to 14 days	4	9	9	13
15 to 29 days	8	23	22	27
30 to 59 days	9	46	48	55
60 to 119 days	29	93	97	118
120 to 179 days	18	154	160	173
180 plus days	11	221	209	321
Summary	79	108	104	321

Legal Status by Average LOS at Snapshot on June 30, 2009.

	<u>Aftercare Revocation</u>		<u>Sentenced</u>		<u>Total</u>	
	<u>No.</u>	<u>LOS</u>	<u>No.</u>	<u>LOS</u>	<u>No.</u>	<u>LOS</u>
Family Court	0	.	79	108	79	108
30 days or less	0	.	12	18	12	18
31 days or more	0	.	67	124	67	124
Superior Court	0	.	0	.	0	.
120 days or less	0	.	0	.	0	.
121 days or more	0	.	0	.	0	.
Total	0	.	79	108	79	108

Population Demographics on June 30, 2009.

Race/ethnicity and age	Total	
	Number	Percent
African American		
13	1	1
14	4	5
15	10	13
16	17	22
17	19	24
18	4	5
Subtotal	55	70
White		
14	1	1
15	4	5
16	4	5
17	14	18
18	1	1
Subtotal	24	30
Total	79	100

Youth's Involvement on June 30, 2009.

Sentenced	No.	LOS
Aftercare	50	111
Child Mental Health	14	126
Division of Family Services	5	104
Probation	9	144
Serious Juvenile Offender and Comprehensive Aftercare Program	1	117
Indefinite sentence	47	95
Mandatory sentence	32	127
Family Court	79	108
Superior Court	0	.

Releases, Second Quarter 2009.

To whom released/program	Number	Percent	LOS in days	
			Mean	Maximum
Child Mental Health, Middletown Manor RTC	1	3	105	105
Department of Correction, YCOP	1	3	165	165
Mowlds Cottage	31	91	189	267
Parent	1	3	130	130
Total	34	100	184	267

Legal Status by Average LOS at Release, Second Quarter 2009.

	Aftercare Revocation		Sentenced		Total	
	No.	LOS	No.	LOS	No.	LOS
Family Court	0	.	33	185	33	185
30 days or less	0	.	0	.	0	.
31 days or more	0	.	33	185	33	185
Superior Court	0	.	1	165	1	165
120 days or less	0	.	0	.	0	.
121 days or more	0	.	0	.	0	.
Total	0	.	34	184	34	184

Crime Category at Release, Second Quarter 2009.

Category	Number	Percent	LOS in days		
			Minimum	Mean	Maximum
Violent felony	10	29	105	185	246
Non-violent felony	13	38	119	174	211
Non-violent misdemeanor	5	15	147	181	231
Traffic misdemeanor	1	3	170	170	170
Probation violation	5	15	168	216	267
Total	34	100	105	184	267

Distribution of Ferris School Releases by LOS, Second Quarter 2009.

