



STATE OF DELAWARE
EXECUTIVE DEPARTMENT
OFFICE OF MANAGEMENT AND BUDGET

To: John Frazer
From: Jorge Rodríguez-Labarca
Date: July 27, 2009
Subject: First Quarter 2009 Ferris School Status Report

Admissions: There were 39 admissions during the first quarter of 2009.

Admission demographics: Of the 39 admissions during the first quarter of 2009, 28 were African American and 11 were white.

Leading charges at admission: The most frequent leading charges at admission for the first quarter were: robbery in the first degree, 7; and, burglary in the second degree and violation of probation, 5. Forty-four percent, or 17 youth, were admitted for violent felonies.

Length of stay: On March 31, there were 79 youth at the Ferris School for Boys with an average length of stay (LOS) of 96 days, a median LOS of 96 days, and a maximum LOS of 230 days.

On March 31, there were 78 Family Court youth with an average LOS of 96 days, and 1 Superior Court youth who had been held for 96 days.

Snapshot demographics: Of the 79 youth at the Ferris School for Boys, there were 61 African American and 18 whites.

Youth's status: On March 31, 1 youth was serving a Superior Court sentence, 5 were serving Aftercare revocations, 15 were serving 12 month mandatory sentences, 20 were serving 6 month mandatory sentences, and 38 were serving indefinite sentences.

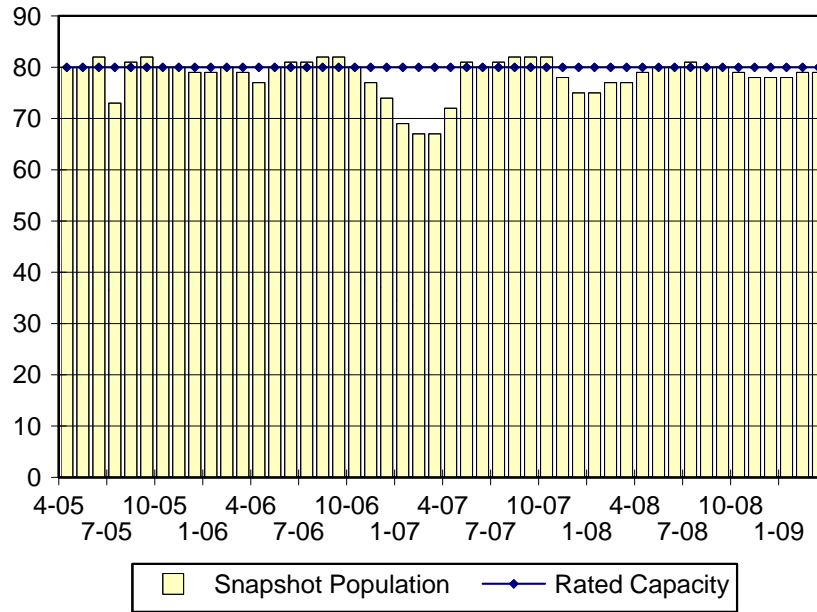
Releases: 38 youth were released during the first quarter of 2009 with an average LOS of 223 days and a maximum LOS at release of 491 days.



Budget Development, Planning and Administration
Statistical Analysis Center

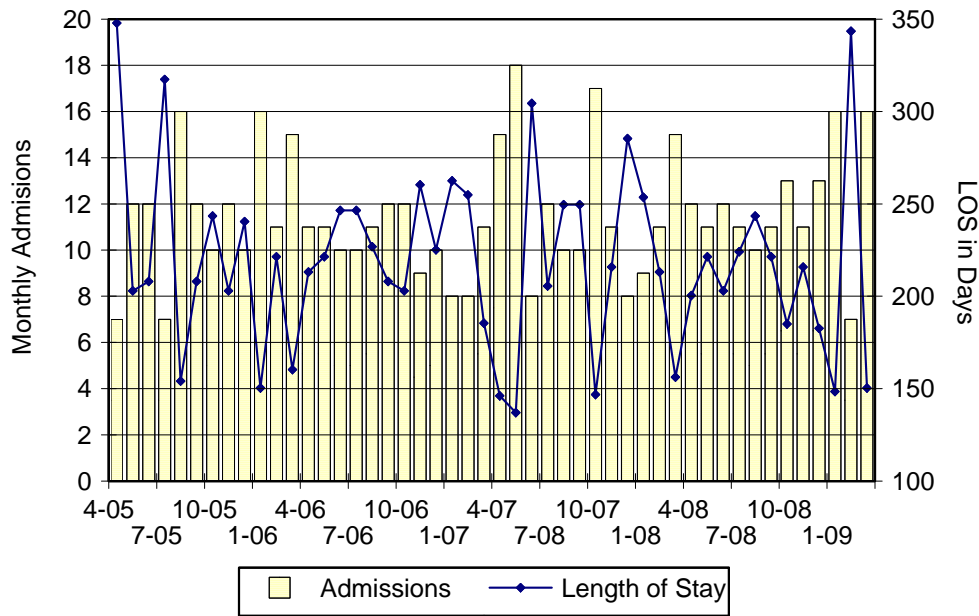
410 Federal Street • Suite 6 • Dover, DE 19901
Phone: (302) 739-4626 • Fax: (302) 739-4630 • www.omb.delaware.gov

Ferris School Snapshot Population and Rated Capacity



Snapshot populations are taken at the end of any given month.

Ferris School Admissions and Time at Ferris School



Length of Stay: Average length of stay in days at the Ferris School given monthly admissions and populations.

Admissions, First Quarter 2009.

Month	Number	Percent
July	16	41
August	7	18
September	16	41
Total	39	100

Admission Demographics, First Quarter 2009.

Race/ethnicity and age	Total	
	Number	Percent
African American		
14	2	5
15	5	13
16	12	31
17	7	18
18	2	5
Subtotal	28	72
White		
15	2	5
16	1	3
17	8	21
Subtotal	11	28
Total	39	100

Admissions Profile for
First Quarter 2009 Ferris School Admittees.

Admissions	<u>Youth</u>			<u>Admissions</u>		
	Number	Percent	Cum. %	Number	Percent	Cum. %
Total	39	100%	100%	256	100%	100%
First admission	0	.	.	0	.	.
Multiple admissions	39	100%	100%	256	100%	100%
2 nd	7	18%	18%	14	5%	5%
3 rd	6	15%	33%	18	7%	13%
4 th	3	8%	41%	12	5%	17%
5 th	4	10%	51%	20	8%	25%
6 th	3	8%	59%	18	7%	32%
7 th	5	13%	72%	35	14%	46%
8 th	0	.	72%	0	.	46%
9 th	2	5%	77%	18	7%	53%
10 th	1	3%	79%	10	4%	57%
11 th	2	5%	85%	22	9%	65%
12 th	0	.	85%	0	.	65%
13 th	3	8%	92%	39	15%	80%
14 th	1	3%	95%	14	5%	86%
15 th	1	3%	97%	15	6%	92%
...	.	.	97%	.	.	92%
21 st	1	0%	100%	21	8%	100%

Note: First admission means that, heretofore, a juvenile had never been admitted to Secure Detention, Level III, Level IV, Level V, or Division of Family Services (DFS) and Child Mental Health (CMH) programs that provide residential services. Included in the count of multiple admissions are those admitted to Secure Detention, Level III, Level IV, Level V, and DFS and CMH programs that provide residential services which are classified by DSCYF as crisis bed; mental health; residential group care; treatment center; residential Interagency Collaborative Team; residential treatment, mental health; and residential treatment, substance abuse.

**Admission Profile by Dispositional
Level for First Quarter 2009 Ferris School Admittees.**

Admissions	Number and percent of youth							
	Sec. Det.		L. V		L. IV		L. III	
	N.	%	N.	%	N.	%	N.	%
Total	39	95%	39	100%	39	100%	39	100%
No prior admissions	12	31%	3	8%	19	49%	13	33%
Multiple admissions	27	69%	36	92%	20	51%	26	67%
2 nd	11	28%	32	82%	2	5%	3	8%
3 rd	4	10%	3	8%	7	18%	14	36%
4 th	5	13%	0	.	0	.	4	10%
5 th	2	5%	0	.	3	8%	2	5%
6 th	3	8%	1	3%	5	13%	1	3%
7 th	0	.	0	.	3	8%	1	3%
8 th	0	.	0	.	0	.	0	.
9 th	0	.	0	.	0	.	1	3%
10 th	1	3%	0	.	0	.	0	.
11 th	0	.	0	.	0	.	0	.
12 th	1	3%	0	.	0	.	0	.

Note: Included in the count of multiple admissions are those admitted to Secure Detention (Sec. Det.), Level III, Level IV, Level V, and Division of Family Services and Child Mental Health programs that provide residential services which are classified by DSCYF as crisis bed; mental health; residential group care; treatment center; residential Interagency Collaborative Team; residential treatment, mental health; and residential treatment, substance abuse.

Reading this table: This table shows that 69 percent of youth admitted to the Ferris School during the first quarter of 2009 had prior admissions to secure detention, 92 percent to Level V, 51 percent to Level IV, and 67 percent to Level III. All youth without prior Level V admissions had prior admissions to secure detention.

Leading Charge at Admission, First Quarter 2009.

Sentenced admissions	Total	Race	
		White	Minority
Assault in the second degree	1	0	1
Assault in the third degree	2	0	2
Burglary in the second degree	5	2	3
Burglary in the second degree, attempted	1	0	1
Burglary in the third degree	1	1	0
Burglary in the third degree, attempted	1	1	0
Carrying a concealed deadly weapon	2	0	2
Forgery in the second degree	1	1	0
Possession of a deadly weapon by a person prohibited	1	0	1
Possession of a deadly weapon by person prohibited, firearm	3	1	2
Possession of drug paraphernalia	1	1	0
Possession with intent to deliver non-narcotics	1	0	1
Receiving stolen property, felony	1	0	1
Resisting arrest	2	0	2
Robbery in the first degree	7	1	6
Robbery in the first degree, attempted	1	1	0
Shoplifting, misdemeanor	1	0	1
Theft of a motor vehicle	1	0	1
Unlawful sexual contact in the second degree	1	1	0
Violation of probation	5	1	4
Total	39	11	28

Crime Category at Admission, First Quarter 2009.

<u>Category</u>	<u>Number</u>	<u>Percent</u>
Violent felony	17	44
Violent misdemeanor	2	5
Non-violent felony	11	28
Non-violent misdemeanor	4	10
Probation violation	5	13
Total	39	100

Length of Stay on March 31, 2009.

<u>LOS in intervals</u>	<u>Youth</u>	<u>Length of Stay</u>		
	<u>Number</u>	<u>Mean</u>	<u>Median</u>	<u>Maximum</u>
1 to 3 days	0	.	.	.
4 to 14 days	6	8	6	13
15 to 29 days	10	23	20	27
30 to 59 days	7	45	48	55
60 to 119 days	29	90	90	118
120 to 179 days	20	146	146	174
180 plus days	7	211	209	230
Summary	79	96	96	230

Legal Status by Average LOS at Snapshot on March 31, 2009.

	<u>Aftercare Revocation</u>		<u>Sentenced</u>		<u>Total</u>	
	<u>No.</u>	<u>LOS</u>	<u>No.</u>	<u>LOS</u>	<u>No.</u>	<u>LOS</u>
Family Court	5	59	73	98	78	96
30 days or less	1	26	15	17	16	17
31 days or more	4	67	58	120	62	116
Superior Court	0	.	1	96	1	96
120 days or less	0	.	1	96	1	96
121 days or more	0	.	0	.	0	.
Total	5	59	74	98	79	96

Population Demographics on March 31, 2009.

Race/ethnicity and age	Total	
	Number	Percent
African American		
13	1	1
14	4	5
15	13	16
16	23	29
17	16	20
18	4	5
Subtotal	61	77
White		
15	3	4
16	3	4
17	12	15
Subtotal	18	23
Total	79	100

Youth's Involvement on March 31, 2009.

Sentenced	No.	LOS
Aftercare	29	78
Child Mental Health	9	98
Division of Family Services	4	144
Probation	5	67
Serious Juvenile Offender and Comprehensive Aftercare Program	1	26
Indefinite sentence	38	99
Mandatory sentence	35	98
Family Court	77	116
Superior Court	1	96

Releases, First Quarter 2009.

To whom released/program	Number	Percent	LOS in days	
			Mean	Maximum
Mowlds Cottage	36	95	219	491
Parent	2	5	293	373
Total	38	100	223	491

Legal Status by Average LOS at Release, First Quarter 2009.

	Aftercare Revocation		Sentenced		Total	
	No.	LOS	No.	LOS	No.	LOS
Family Court	0	.	38	223	38	223
30 days or less	0	.	0	.	0	.
31 days or more	0	.	0	.	0	.
Superior Court	0	.	38	223	38	223
120 days or less	0	.	0	.	0	.
121 days or more	0	.	0	.	0	.
Total	0	.	38	223	38	223

Crime Category at Release, First Quarter 2009.

Category	Number	Percent	LOS in days		
			Minimum	Mean	Maximum
Violent felony	14	37	148	261	491
Violent misdemeanor	2	5	182	187	191
Non-violent felony	6	16	184	207	239
Non-violent misdemeanor	5	13	156	183	232
Traffic misdemeanor	1	3	162	162	162
Probation violation	9	24	155	202	317
Unclassified violation	1	3	310	310	310
Total	38	100	148	223	491

Distribution of Ferris School Releases by LOS, First Quarter 2009.

