



STATE OF DELAWARE  
EXECUTIVE DEPARTMENT  
OFFICE OF MANAGEMENT AND BUDGET

To: John Frazer  
From: Jorge Rodríguez-Labarca  
Date: May 26, 2009  
Subject: Fourth Quarter 2008 Ferris School Status Report

---

*Admissions:* There were 37 admissions during the fourth quarter of 2008.

Admission demographics: Of the 37 admissions during the fourth quarter of 2008, 29 were African American and 8 were white.

*Leading charges at admission:* The most frequent leading charges at admission for the fourth quarter were: burglary in the third degree, robbery in the first degree, and violation of probation, 5. Thirty-five percent, or 13 youth, were admitted for violent felonies.

*Length of stay:* On December 31, there were 78 youth at the Ferris School for Boys with an average length of stay (LOS) of 115 days, a median LOS of 100 days, and a maximum LOS of 426 days.

On December 31, there were 77 Family Court youth with an average LOS of 116 days, and 1 Superior Court youth who had been held for 6 days.

*Snapshot demographics:* Of the 78 youth at the Ferris School for Boys, there were 62 African American, and 16 whites.

*Youth's status:* On December 31, there were 41 youth serving indefinite sentences, 29 were serving 6 month mandatory sentences, and 8 were serving 12 month mandatory sentences.

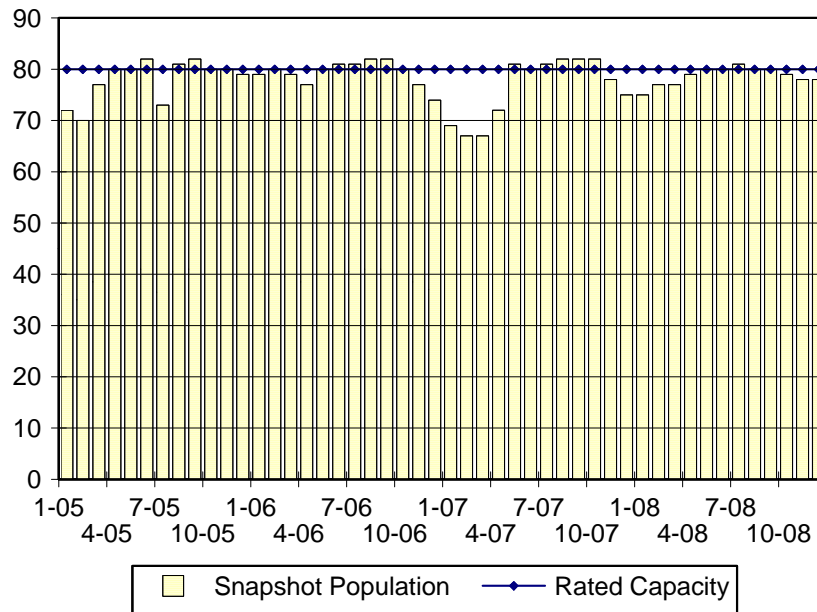
*Releases:* 37 youth were released during the fourth quarter of 2008 with an average LOS of 200 days and a maximum LOS at release of 381 days.



**Budget Development, Planning and Administration**  
**Statistical Analysis Center**

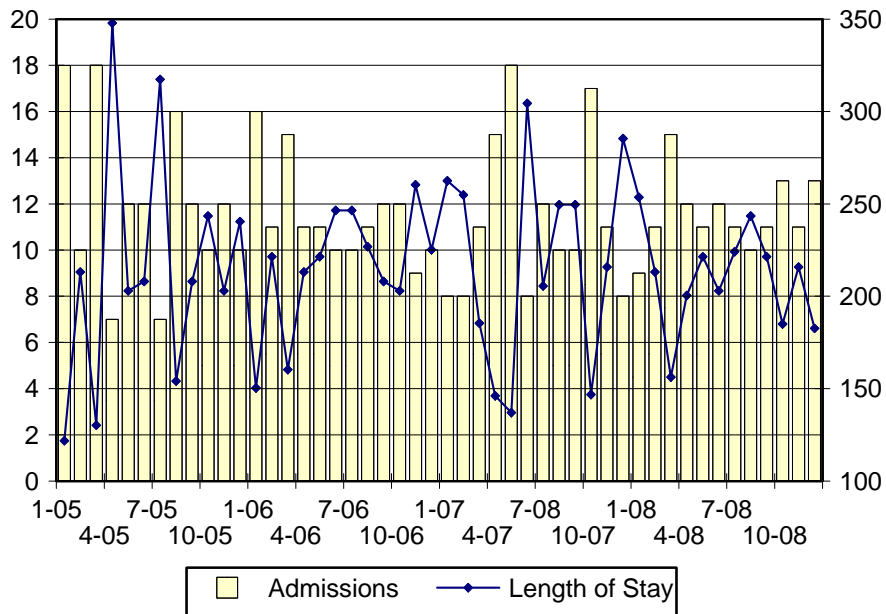
410 Federal Street • Suite 6 • Dover, DE 19901  
Phone: (302) 739-4626 • Fax: (302) 739-4630 • [www.omb.delaware.gov](http://www.omb.delaware.gov)

### Ferris School Snapshot Population and Rated Capacity



Snapshot populations are taken at the end of any given month.

### Ferris School Admissions and Time at Ferris School



Length of Stay: Average length of stay in days at the Ferris School given monthly admissions and populations.

Admissions, Fourth Quarter 2008.

Month	Number	Percent
July	13	35
August	11	30
September	13	35
Total	37	100

Admission Demographics, Fourth Quarter 2008.

Race/ethnicity and age	Total	
	Number	Percent
African American		
13	1	3
14	2	5
15	6	16
16	8	22
17	10	27
18	2	5
Subtotal	29	78
White		
15	1	3
16	2	5
17	5	14
Subtotal	8	22
Total	37	100

Admissions Profile for  
Fourth Quarter 2008 Ferris School Admittees.

Admissions	Youth			Admissions		
	Number	Percent	Cum. %	Number	Percent	Cum. %
Total	37	100%	100%	270	100%	100%
First admission	0	.	.	0	.	.
Multiple admissions	37	100%	100%	270	100%	100%
2 <sup>nd</sup>	4	11%	11%	8	3%	3%
3 <sup>rd</sup>	3	8%	19%	9	3%	6%
4 <sup>th</sup>	4	11%	30%	16	6%	12%
5 <sup>th</sup>	4	11%	41%	20	7%	20%
6 <sup>th</sup>	3	8%	49%	18	7%	26%
7 <sup>th</sup>	2	5%	54%	14	5%	31%
8 <sup>th</sup>	4	11%	65%	32	12%	43%
9 <sup>th</sup>	4	11%	76%	36	13%	57%
10 <sup>th</sup>	1	3%	78%	10	4%	60%
11 <sup>th</sup>	0	.	78%	0	.	60%
12 <sup>th</sup>	2	5%	84%	24	9%	69%
13 <sup>th</sup>	3	8%	92%	39	14%	84%
14 <sup>th</sup>	1	3%	95%	14	5%	89%
15 <sup>th</sup>	2	5%	100%	30	11%	100%

Note: First admission means that, heretofore, a juvenile had never been admitted to Secure Detention, Level III, Level IV, Level V, or Division of Family Services (DFS) and Child Mental Health (CMH) programs that provide residential services. Included in the count of multiple admissions are those admitted to Secure Detention, Level III, Level IV, Level V, and DFS and CMH programs that provide residential services which are classified by DSCYF as crisis bed; mental health; residential group care; treatment center; residential Interagency Collaborative Team; residential treatment, mental health; and residential treatment, substance abuse.

**Admission Profile by Dispositional  
Level for Fourth Quarter 2008 Ferris School Admittees.**

Admissions	Number and percent of youth							
	Sec. Det.		L. V		L. IV		L. III	
	N.	%	N.	%	N.	%	N.	%
Total	37	100%	37	100%	37	100%	37	100%
No prior admissions	6	16%	27	73%	11	30%	6	16%
Multiple admissions	31	84%	10	27%	26	70%	31	84%
2 <sup>nd</sup>	10	27%	8	22%	6	16%	5	14%
3 <sup>rd</sup>	10	27%	2	5%	4	11%	9	24%
4 <sup>th</sup>	4	11%	0	.	3	8%	11	30%
5 <sup>th</sup>	3	8%	0	.	5	14%	2	5%
6 <sup>th</sup>	3	8%	0	.	3	8%	2	5%
7 <sup>th</sup>	1	3%	0	.	3	8%	0	.
8 <sup>th</sup>	0	.	0	.	0	.	0	.
9 <sup>th</sup>	0	.	0	.	0	.	0	.
10 <sup>th</sup>	0	.	0	.	0	.	1	3%
11 <sup>th</sup>	0	.	0	.	2	5%	0	.
12 <sup>th</sup>	0	.	0	.	0	.	0	.
13 <sup>th</sup>	0	.	0	.	0	.	1	3%

Note: Included in the count of multiple admissions are those admitted to Secure Detention (Sec. Det.), Level III, Level IV, Level V, and Division of Family Services and Child Mental Health programs that provide residential services which are classified by DSCYF as crisis bed; mental health; residential group care; treatment center; residential Interagency Collaborative Team; residential treatment, mental health; and residential treatment, substance abuse.

Reading this table: This table shows that 84 percent of youth admitted to the Ferris School during the fourth quarter of 2008 had prior admissions to secure detention, 27 percent to Level V, 70 percent to Level IV, and 84 percent to Level III. All youth without prior Level V admissions had prior admissions to secure detention.

Leading Charge at Admission, Fourth Quarter 2008.

Sentenced admissions	Total	Race	
		White	Minority
Breach of conditions of release, misdemeanor	1	0	1
Burglary in the second degree	3	0	3
Burglary in the third degree	5	1	4
Conspiracy in the second degree	1	0	1
Driving without a license	1	1	0
Escape after conviction	2	1	1
Possession of a deadly weapon by a person prohibited, firearm	3	0	3
Receiving stolen property, felony	1	1	0
Receiving stolen property, misdemeanor	1	0	1
Reckless driving	1	1	0
Resisting arrest	1	0	1
Resisting arrest with force or violence, class G felony	1	0	1
Robbery in the first degree	5	0	5
Robbery in the second degree	2	0	2
Robbery in the second degree, attempted	1	0	1
Theft, felony	1	0	1
Theft, misdemeanor, victim is 62 years or older	1	0	1
Violation of probation	5	2	3
<b>Total</b>	<b>37</b>	<b>8</b>	<b>29</b>

Crime Category at Admission, Fourth Quarter 2008.

<u>Category</u>	<u>Number</u>	<u>Percent</u>
Violent felony	13	35
Non-violent felony	13	35
Non-violent misdemeanor	4	11
Traffic	2	5
Probation violation	5	14
<b>Total</b>	<b>37</b>	<b>100</b>

Length of Stay on December 31, 2008.

<u>LOS in intervals</u>	<u>Youth</u>	<u>Length of Stay</u>		
	<u>Number</u>	<u>Mean</u>	<u>Median</u>	<u>Maximum</u>
1 to 3 days	0	.	.	.
4 to 14 days	7	9	6	14
15 to 29 days	6	25	27	28
30 to 59 days	11	44	42	56
60 to 119 days	24	91	91	119
120 to 179 days	16	148	147	175
180 plus days	14	265	235	426
<b>Summary</b>	<b>78</b>	<b>115</b>	<b>100</b>	<b>426</b>

Legal Status by Average LOS at Snapshot on December 31, 2008.

	<u>Aftercare Revocation</u>		<u>Sentenced</u>		<u>Total</u>	
	<u>No.</u>	<u>LOS</u>	<u>No.</u>	<u>LOS</u>	<u>No.</u>	<u>LOS</u>
Family Court	0	.	77	116	77	116
30 days or less	0	.	12	18	12	18
31 days or more	0	.	65	135	65	135
Superior Court	0	.	1	6	1	6
120 days or less	0	.	1	6	1	6
121 days or more	0	.	0	.	0	.
<b>Total</b>	<b>0</b>	<b>.</b>	<b>78</b>	<b>115</b>	<b>78</b>	<b>115</b>

Population Demographics on December 31, 2008.

Race/ethnicity and age	Total	
	Number	Percent
African American		
13	1	1
14	5	6
15	16	21
16	20	26
17	15	19
18	5	6
Subtotal	62	79
White		
15	2	3
16	4	5
17	10	13
Subtotal	16	21
Total	78	100

Youth's Involvement on December 31, 2008.

Sentenced	No.	LOS
Aftercare	55	115
Child Mental Health	11	113
Division of Family Services	7	225
Probation	10	102
Serious Juvenile Offender and Comprehensive Aftercare Program	0	.
Indefinite sentence	41	113
Mandatory sentence	37	119
Family Court	77	116
Superior Court	1	6



## Releases, Fourth Quarter 2008.

To whom released/program	Number	Percent	LOS in days	
			Mean	Maximum
New Jersey, DYFS Foster Care	1	3	96	96
Mowlds Cottage	35	95	203	381
Parent	1	3	208	208
Total	37	100	200	381

## Legal Status by Average LOS at Release, Fourth Quarter 2008.

	Aftercare Revocation		Sentenced		Total	
	No.	LOS	No.	LOS	No.	LOS
Family Court	0	.	37	200	37	200
30 days or less	0	.	0	.	0	.
31 days or more	0	.	37	200	37	200
Superior Court	0	.	0	.	0	.
120 days or less	0	.	0	.	0	.
121 days or more	0	.	0	.	0	.
Total	0	.	37	200	37	200

## Crime Category at Release, Fourth Quarter 2008.

Category	Number	Percent	LOS in days		
			Minimum	Mean	Maximum
Violent felony	13	35	141	215	381
Violent misdemeanor	4	11	162	224	324
Non-violent felony	12	32	96	180	219
Non-violent misdemeanor	3	8	190	211	239
Probation violation	5	14	162	187	219
Total	37	100	96	200	381

Distribution of Ferris School Releases by LOS, Fourth Quarter 2008.

