



STATE OF DELAWARE  
EXECUTIVE DEPARTMENT  
OFFICE OF MANAGEMENT AND BUDGET

To: John Frazer  
From: Jorge Rodríguez-Labarca  
Date: February 13, 2008  
Subject: Third Quarter 2007 Ferris School Status Report

---

*Admissions:* There were 32 admissions during the third quarter of 2007.

Admission demographics: Of the 32 admissions during the third quarter of 2007, 25 were African American and seven were white.

*Leading charges at admission:* The most frequent leading charges at admission for the third quarter were: violation of probation, 14; burglary in the second degree, possession of a firearm by a person prohibited, possession with intent to deliver narcotics and robbery in the first degree, 2. Thirty-four percent, or 11 youth, were admitted for violent felonies.

*Length of stay:* On September 30, there were 82 youth at the Ferris School for Boys with an average length of stay (LOS) of 128 days, a median LOS of 127 days, and a maximum LOS of 654 days.

On September 30, there were 82 Family Court youth with an average LOS of 128 days.

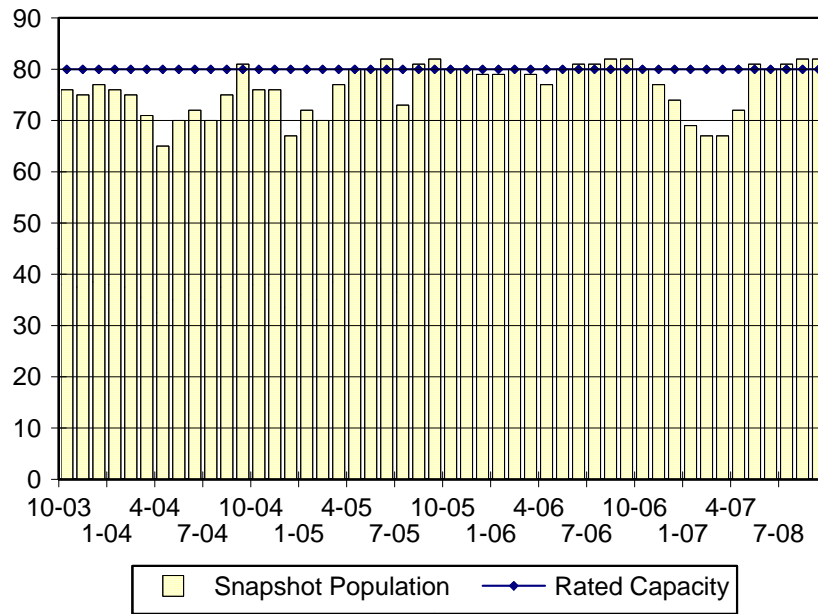
*Snapshot demographics:* Of the 82 youth at the Ferris School for Boys, there were 60 African American and 22 white.

*Youth's status:* On September 30, there were 53 youth serving indefinite sentences and 29 serving mandatory sentences.

*Releases:* 30 youth were released during the third quarter of 2007 with an average LOS of 210 days and a maximum LOS at release of 421 days.

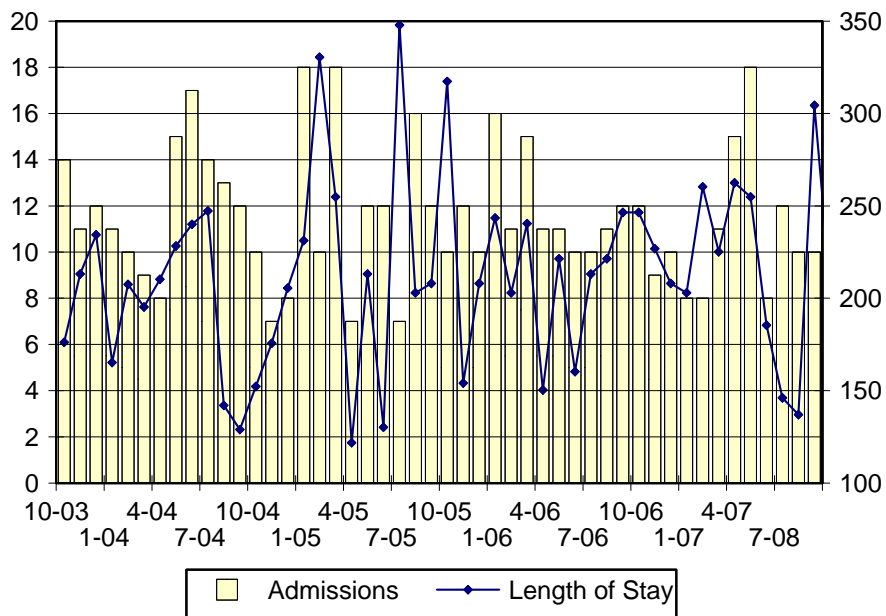


### Ferris School Snapshot Population and Rated Capacity



Snapshot populations are taken at the end of any given month.

### Ferris School Admissions and Time at Ferris School



Length of Stay: Average length of stay in days at the Ferris School given monthly admissions and populations.

## Admissions, Third Quarter 2007.

Month	Number	Percent
July	12	38
August	10	31
September	10	31
Total	32	100

## Admission Demographics, Third Quarter 2007.

Race/ethnicity and age	Total	
	Number	Percent
African American		
15	5	16
16	5	16
17	9	28
18	6	19
Subtotal	25	78
White		
15	1	3
16	1	3
17	4	13
18	1	3
Subtotal	7	22
Total	32	100

**Admissions Profile for  
Third Quarter 2007 Ferris School Admittees.**

Admissions	<u>Youth</u>			<u>Admissions</u>		
	Number	Percent	Cum. %	Number	Percent	Cum. %
Total	32	100%	100%	331	100%	100%
First admission	0	.	.	0	.	.
Multiple admissions	32	100%	100%	331	100%	100%
2 <sup>nd</sup>	1	3%	3%	2	1%	1%
3 <sup>rd</sup>	3	9%	13%	9	3%	3%
4 <sup>th</sup>	1	3%	16%	4	1%	5%
5 <sup>th</sup>	2	6%	22%	10	3%	8%
6 <sup>th</sup>	1	3%	25%	6	2%	9%
7 <sup>th</sup>	0	.	25%	0	.	9%
8 <sup>th</sup>	4	13%	38%	32	10%	19%
9 <sup>th</sup>	3	9%	47%	27	8%	27%
10 <sup>th</sup>	2	6%	53%	20	6%	33%
11 <sup>th</sup>	4	13%	66%	44	13%	47%
12 <sup>th</sup>	0	.	66%	0	.	47%
13 <sup>th</sup>	0	.	66%	0	.	47%
14 <sup>th</sup>	5	16%	81%	70	21%	68%
15 <sup>th</sup>	1	3%	84%	15	5%	72%
16 <sup>th</sup>	0	.	84%	0	.	72%
17 <sup>th</sup>	4	13%	97%	68	21%	93%
18 <sup>th</sup>	0	.	97%	0	.	93%
19 <sup>th</sup>	0	.	97%	0	.	93%
20 <sup>th</sup>	0	.	97%	0	.	93%
21 <sup>st</sup>	0	.	97%	0	.	93%
22 <sup>nd</sup>	0	.	97%	0	.	93%
23 <sup>rd</sup>	0	.	97%	0	.	93%
24 <sup>th</sup>	1	3%	100%	24	7%	100%

Note: First admission means that, heretofore, a juvenile had never been admitted to Secure Detention, Level III Residential, Level IV, Level V, or Division of Family Services (DFS) and Child Mental Health (CMH) programs that provide residential services. Included in the count of multiple admissions are those admitted to Secure Detention, Level III Residential, Level IV, Level V, and DFS and CMH programs that provide residential services which are classified by DSCYF as crisis bed; mental health; residential group care; treatment center; residential Interagency Collaborative Team; residential treatment, mental health; and residential treatment, substance abuse.

**Admission Profile by Dispositional  
Level for Third Quarter 2007 Ferris School Admittees.**

Admissions	Number and percent of youth							
	<u>Sec. Det.</u>		<u>L. V</u>		<u>L. IV</u>		<u>L. IIIR</u>	
	N.	%	N.	%	N.	%	N.	%
Total	32	100%	32	100%	32	100%	32	100%
No prior admissions	3	9%	0	.	5	16%	4	13%
Multiple admissions	29	91%	32	100%	27	78%	28	88%
2 <sup>nd</sup>	6	19%	6	19%	5	16%	9	28%
3 <sup>rd</sup>	5	16%	7	20%	7	22%	3	9%
4 <sup>th</sup>	5	16%	8	25%	3	9%	5	16%
5 <sup>th</sup>	2	6%	7	22%	4	13%	0	.
6 <sup>th</sup>	5	16%	3	9%	2	6%	4	13%
7 <sup>th</sup>	3	9%	1	3%	3	9%	2	6%
8 <sup>th</sup>	2	6%	0	.	1	3%	1	3%
9 <sup>th</sup>	0	.	0	.	2	6%	1	3%
10 <sup>th</sup>	0	.	0	.	0	.	2	6%
11 <sup>th</sup>	1	3%	0	.	0	.	0	.

Note: Included in the count of multiple admissions are those admitted to Secure Detention (Sec. Det.), Level III Residential (L. IIIR), Level IV, Level V, and Division of Family Services and Child Mental Health programs that provide residential services which are classified by DSCYF as crisis bed; mental health; residential group care; treatment center; residential Interagency Collaborative Team; residential treatment, mental health; and residential treatment, substance abuse.

Reading this table: This table shows that 91 percent of youth admitted to the Ferris School during the third quarter of 2007 had prior admissions to secure detention, 100 percent to Level V, 78 percent to Level IV, and 88 percent to Level IIIR. All youth without prior Level V admissions had prior admissions to secure detention.

Leading Charge at Admission, Third Quarter 2007.

Sentenced admissions	Total	Race	
		White	Minority
Assault in the second degree	1	0	1
Burglary in the second degree	2	1	1
Distribution of a controlled substance within 300 feet of a park	1	0	1
Harassment, aggravated	1	1	0
Manslaughter	1	0	1
Offensive touching	1	0	1
Possession of a deadly weapon by a person prohibited, firearm	2	0	2
Possession of a deadly weapon during the commission of a felony	1	0	1
Possession or use of a non-narcotic	1	1	0
Possession with intent to deliver narcotics	2	0	2
Receiving stolen property, misdemeanor	1	0	1
Robbery in the first degree	2	0	2
Theft, felony	1	1	0
Trafficking in illegal drugs from 2.5 to less than 10 grams	1	0	1
Violation of probation	14	3	11
Total	32	7	25

Crime Category at Admission, Third Quarter 2007.

<u>Category</u>	<u>Number</u>	<u>Percent</u>
Violent felony	11	34
Non-violent felony	4	13
Non-violent misdemeanor	3	9
Probation violation	14	44
Total	32	100

Length of Stay on September 30, 2007.

<u>LOS in intervals</u>	<u>Youth</u>	<u>Length of Stay</u>		
	<u>Number</u>	<u>Mean</u>	<u>Median</u>	<u>Maximum</u>
1 to 3 days	0	.	.	.
4 to 14 days	5	5	4	11
15 to 29 days	5	22	24	27
30 to 59 days	9	39	39	46
60 to 119 days	21	88	84	116
120 to 179 days	24	148	147	174
180 plus days	18	256	220	654
Summary	82	128	127	654

Legal Status by Average LOS at Snapshot on September 30, 2007.

	<u>Aftercare Revocation</u>		<u>Sentenced</u>		<u>Total</u>	
	<u>No.</u>	<u>LOS</u>	<u>No.</u>	<u>LOS</u>	<u>No.</u>	<u>LOS</u>
Family Court	0	.	82	128	82	128
30 days or less	0	.	10	14	10	14
31 days or more	0	.	72	144	72	144
Superior Court	0	.	0	.	0	.
120 days or less	0	.	0	.	0	.
121 days or more	0	.	0	.	0	.
Total	0	.	82	128	82	128

Population Demographics on September 30, 2007.

Race/ethnicity and age	Total	
	Number	Percent
African American		
13	1	1
14	3	4
15	10	12
16	21	26
17	18	22
18	7	9
Subtotal	60	73
White		
15	2	2
16	5	6
17	14	17
18	1	1
Subtotal	22	27
Total	82	100

Youth's Involvement on September 30, 2007.

Sentenced	No.	LOS
Aftercare	7	110
Child Mental Health	5	78
Division of Family Services	3	159
Serious Juvenile Offender and Comprehensive Aftercare Program	20	97
Indefinite sentence	53	102
Mandatory sentence	29	177
Family Court	82	128
Superior Court	0	.



## Releases, Third Quarter 2007.

To whom released/program	Number	Percent	LOS in days	
			Mean	Maximum
Cove PREP	1	3	334	334
Mowlds Cottage	28	93	200	421
Parent	1	3	372	372
Total	30	100	210	421

## Legal Status by Average LOS at Release, Third Quarter 2007.

	Aftercare Revocation		Sentenced		Total	
	No.	LOS	No.	LOS	No.	LOS
Family Court	0	.	30	210	30	210
30 days or less	0	.	0	.	0	.
31 days or more	0	.	30	210	30	210
Superior Court	0	.	0	.	0	.
120 days or less	0	.	0	.	0	.
121 days or more	0	.	0	.	0	.
Total	0	.	30	210	30	210

## Crime Category at Release, Third Quarter 2007.

Category	Number	Percent	LOS in days		
			Minimum	Mean	Maximum
Violent felony	15	50	136	240	421
Non-violent felony	3	10	170	220	259
Non-violent misdemeanor	6	20	139	157	184
Probation violation	6	20	134	184	334
Total	30	100	134	210	421

Distribution of Ferris School Releases by LOS, Third Quarter 2007.

