



STATE OF DELAWARE
EXECUTIVE DEPARTMENT
OFFICE OF MANAGEMENT AND BUDGET

To: John Frazer
From: Jorge Rodríguez-Labarca
Date: June 15, 2007
Subject: Fourth Quarter 2006 Ferris School Status Report

Admissions: There were 31 admissions during the fourth quarter of 2006.

Admission demographics: Of the 31 admissions during the fourth quarter of 2006, 21 were African American, nine were white, and one was Hispanic.

Leading charges at admission: The most frequent leading charges at admission for the fourth quarter were: possession with intent to deliver narcotics, 4; and possession of a firearm by person prohibited, robbery in the second degree, felony theft and violation of probation, 3. Forty-five percent, or 14 youth, were admitted for violent felonies.

Length of stay: On December 31, there were 74 youth at the Ferris School for Boys with an average length of stay (LOS) of 121 days, a median LOS of 110 days, and a maximum LOS of 381 days.

On December 31, there were 74 Family Court youth with an average LOS of 121 days.

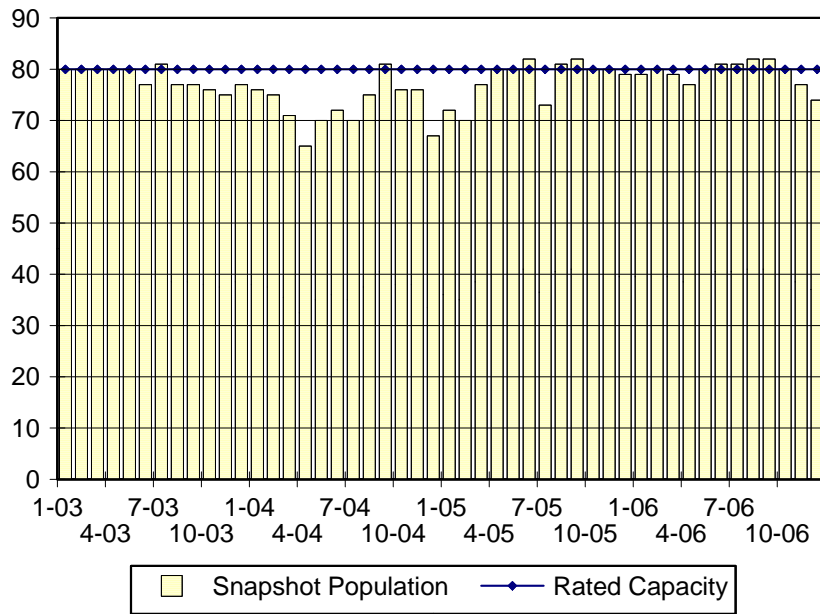
Snapshot demographics: Of the 74 youth at the Ferris School for Boys, there were 51 African American, 22 white and one Hispanic.

Youth's status: On December 31, there were 37 youth serving indefinite sentences and 37 serving mandatory sentences.

Releases: 37 youth were released during the fourth quarter of 2006 with an average LOS of 226 days and a maximum LOS at release of 379 days.

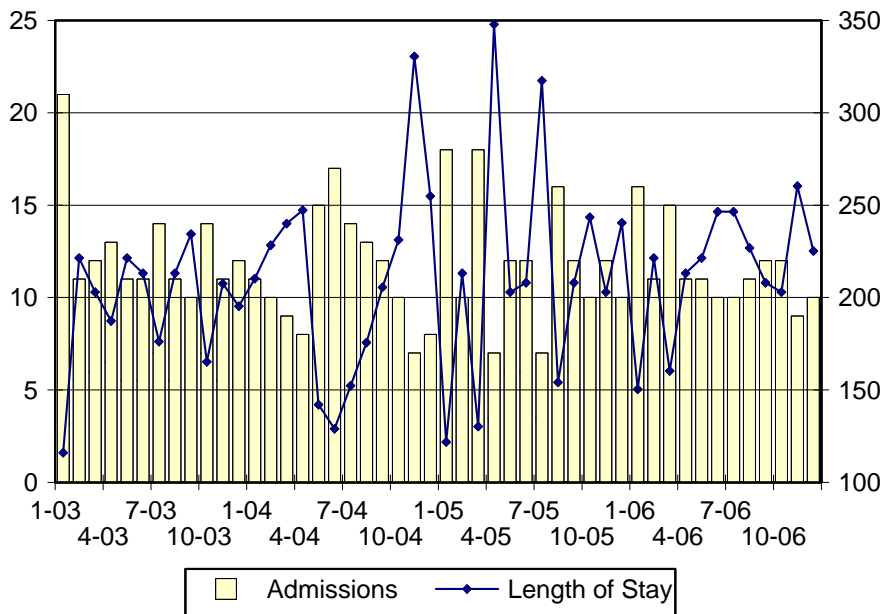


Ferris School Snapshot Population and Rated Capacity



Snapshot populations are taken at the end of any given month. The Ferris School capacity increased from 72 beds to 80 beds during January 2003.

Ferris School Admissions and Time at Ferris School



Length of Stay: Average length of stay in days at the Ferris School given monthly admissions and populations.

Admissions, Fourth Quarter 2006.

Month	Number	Percent
October	12	39
November	9	29
December	10	32
Total	31	100

Admission Demographics, Fourth Quarter 2006.

Race/ethnicity and age	Total	
	Number	Percent
African American		
14	1	3
15	1	3
16	7	23
17	12	39
Subtotal	21	68
Hispanic		
18	1	3
Subtotal	1	3
White		
15	2	6
16	3	10
17	3	10
18	1	3
Subtotal	9	29
Total	31	100

**Admissions Profile for
Fourth Quarter 2006 Ferris School Admittees.**

Admissions	<u>Youth</u>			<u>Admissions</u>		
	Number	Percent	Cum. %	Number	Percent	Cum. %
Total	31	100%	100%	250	100%	100%
Third admission	0	.	.	0	.	.
Multiple admissions	31	100%	100%	250	100%	100%
2 nd	5	16%	16%	10	4%	4%
3 rd	4	13%	29%	12	5%	9%
4 th	0	.	29%	0	.	9%
5 th	2	6%	35%	10	4%	13%
6 th	2	6%	42%	12	5%	18%
7 th	3	10%	52%	21	8%	26%
8 th	2	6%	58%	16	6%	32%
9 th	3	10%	68%	27	11%	43%
10 th	2	6%	74%	20	8%	51%
11 th	1	3%	77%	11	4%	56%
12 th	0	.	77%	0	.	56%
13 th	3	10%	87%	39	16%	71%
14 th	0	.	87%	0	.	71%
15 th	0	.	87%	0	.	71%
16 th	1	3%	90%	16	6%	78%
17 th	0	.	90%	0	.	78%
18 th	1	3%	94%	18	7%	85%
19 th	2	6%	100%	38	15%	100%

Note: Third admission means that, heretofore, a juvenile had never been admitted to Secure Detention, Level III Residential, Level IV, Level V, or Division of Family Services (DFS) and Child Mental Health (CMH) programs that provide residential services. Included in the count of multiple admissions are those admitted to Secure Detention, Level III Residential, Level IV, Level V, and DFS and CMH programs that provide residential services which are classified by DSCYF as crisis bed; mental health; residential group care; treatment center; residential Interagency Collaborative Team; residential treatment, mental health; and residential treatment, substance abuse.

**Admission Profile by Dispositional
Level for Fourth Quarter 2006 Ferris School Admittees.**

Admissions	Number and percent of youth							
	<u>Sec. Det.</u>		<u>L. V</u>		<u>L. IV</u>		<u>L. IIIR</u>	
	N.	%	N.	%	N.	%	N.	%
Total	31	100%	31	100%	31	100%	31	100%
No prior admissions	1	3%	10	32%	11	37%	5	16%
Multiple admissions	30	97%	21	68%	20	65%	26	84%
2 nd	7	23%	9	29%	7	23%	6	19%
3 rd	6	19%	4	13%	4	13%	5	16%
4 th	4	13%	4	13%	5	17%	4	13%
5 th	4	13%	3	10%	2	7%	2	6%
6 th	3	10%	1	3%	1	3%	4	13%
7 th	1	3%	0	.	1	3%	3	10%
8 th	2	6%	0	.	0	.	2	6%
9 th	1	3%	0	.	0	.	0	.
10 th	0	.	0	.	0	.	0	.
11 th	2	6%	0	.	0	.	0	.

Note: Included in the count of multiple admissions are those admitted to Secure Detention (Sec. Det.), Level III Residential (L. IIIR), Level IV, Level V, and Division of Family Services and Child Mental Health programs that provide residential services which are classified by DSCYF as crisis bed; mental health; residential group care; treatment center; residential Interagency Collaborative Team; residential treatment, mental health; and residential treatment, substance abuse.

Reading this table: This table shows that 97 percent of youth admitted to the Ferris School during the fourth quarter of 2006 had prior admissions to secure detention, 68 percent to Level V, 65 percent to Level IV, and 84 percent to Level IIIR. All youth without prior Level V admissions had prior admissions to secure detention.

Leading Charge at Admission, Fourth Quarter 2006.

Leading charge	
Assault in the first degree	1
Burglary in the second degree	1
Carrying a concealed deadly weapon	1
Conspiracy, second degree	1
Conspiracy, third degree	1
Criminal contempt	1
Escape in the third degree	1
Menacing	1
Possession of a deadly weapon by a person prohibited, firearm	3
Possession of a deadly weapon during the commission of a felony	1
Possession of a firearm during the commission of a felony	2
Possession with intent to deliver narcotics	4
Possession with intent to deliver non-narcotics	1
Resisting arrest	2
Robbery in the first degree	1
Robbery in the second degree	3
Theft, felony	3
Violation of probation	3
Total	31

Crime Category at Admission, Fourth Quarter 2006.

Category	Number	Percent
Violent felony	14	45
Violent misdemeanor	8	26
Non-violent felony	6	19
Probation violation	3	10
Total	31	100

Length of Stay on December 31, 2006.

LOS in intervals	Youth	Length of Stay		
	Number	Mean	Median	Maximum
1 to 3 days	1	3	3	3
4 to 14 days	1	13	13	13
15 to 29 days	8	23	23	28
30 to 59 days	5	44	46	53
60 to 119 days	27	87	88	118
120 to 179 days	21	151	144	179
180 plus days	11	273	256	381
Summary	74	121	110	381

Legal Status by Average LOS at Snapshot on December 31, 2006.

	Aftercare Revocation		Sentenced		Total	
	No.	LOS	No.	LOS	No.	LOS
Family Court	0	.	74	12	74	12
30 days or less	0	.	10	20	10	20
31 days or more	0	.	64	137	64	137
Superior Court	0	.	0	.	0	.
120 days or less	0	.	0	.	0	.
121 days or more	0	.	0	.	0	.
Total	0	.	74	121	74	121

Population Demographics on December 31, 2006.

Race/ethnicity and age	Total	
	Number	Percent
African American		
14	3	4
15	10	14
16	16	22
17	22	30
Subtotal	51	69
Hispanic		
18	1	1
Subtotal	1	1
White		
15	3	4
16	9	12
17	9	12
18	1	1
Subtotal	22	30
Total	74	100

Youth's Involvement on December 31, 2006.

Sentenced	No.	LOS
Aftercare	18	146
Child Mental Health	9	182
Division of Family Services	2	70
Serious Juvenile Offender and Comprehensive Aftercare Program	29	121
Indefinite sentence	37	104
Mandatory sentence	37	138
Family Court	74	121
Superior Court	0	.

Releases, Fourth Quarter 2006.

To whom released/program	Number	Percent	LOS in days	
			Mean	Maximum
Mowlds Cottage	37	100	226	379
Total	37	100	226	379

Legal Status by Average LOS at Release, Fourth Quarter 2006.

	Aftercare Revocation		Sentenced		Total	
	No.	LOS	No.	LOS	No.	LOS
Family Court	0	.	37	226	37	226
30 days or less	0	.	0	.	0	.
31 days or more	0	.	37	226	37	226
Superior Court	0	.	0	.	0	.
120 days or less	0	.	0	.	0	.
121 days or more	0	.	0	.	0	.
Total	0	.	37	226	37	226

Crime Category at Release, Fourth Quarter 2006.

Category	Number	Percent	LOS in days		
			Minimum	Mean	Maximum
Violent felony	20	54	148	233	379
Violent misdemeanor	1	3	172	172	172
Non-violent felony	3	8	175	204	239
Non-violent misdemeanor	5	14	190	252	348
Traffic misdemeanor	1	3	168	168	168
Probation violation	7	19	163	215	351
Total	37	100	148	226	379

Distribution of Ferris School Releases by LOS, Fourth Quarter 2006.

