



**STATE OF DELAWARE  
EXECUTIVE DEPARTMENT  
OFFICE OF MANAGEMENT AND BUDGET**

**To:** John Frazer  
**From:** Jorge Rodríguez-Labarca  
**Date:** October 5, 2005  
**Subject:** Third Quarter 2005 Ferris School Status Report

---

*Admissions:* There were 35 admissions during the third quarter of 2005.

Admission demographics: 24 African Americans and 11 whites were admitted during the third quarter.

*Leading charges at admission:* The most frequent leading charges at admission for the third quarter were: possession of a deadly weapon (firearm) by person prohibited, possession with intent to deliver narcotics, and violation of probation, 4. Forty nine percent, or 17 youth, were admitted for violent felonies.

*Length of stay:* On September 30, there were 82 youth at the Ferris School for Boys with an average length of stay (LOS) was 111 days, a median LOS of 100 days, and a maximum LOS of 375 days.

On September 30, there were 81 Family Court youth with an average LOS of 110 days.

On September 30, there was one Superior Court youth whose LOS was 170 days.

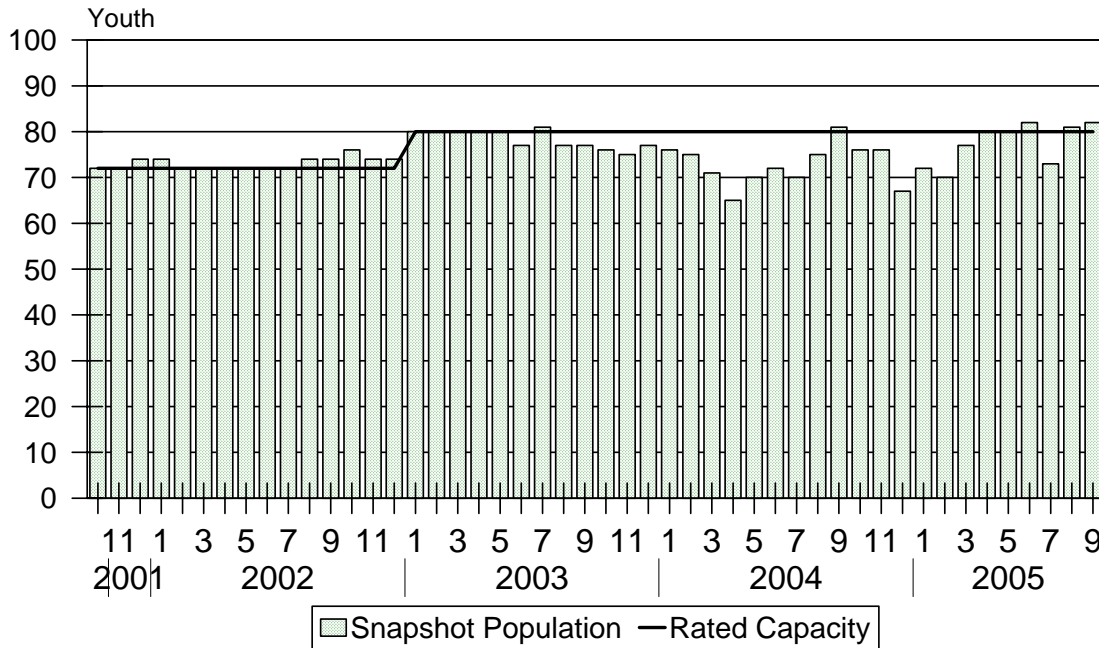
*Snapshot demographics:* Of the 82 youth at the Ferris School for Boys, there were 62 African Americans and 20 whites.

*Youth's status:* On September 30 there were 45 youth serving indefinite sentences, 36 mandatory sentences, one was a Superior Court case.

*Releases:* 31 youth were released during the third quarter of 2005 with an average LOS of 200 days and a maximum LOS at release of 262 days.

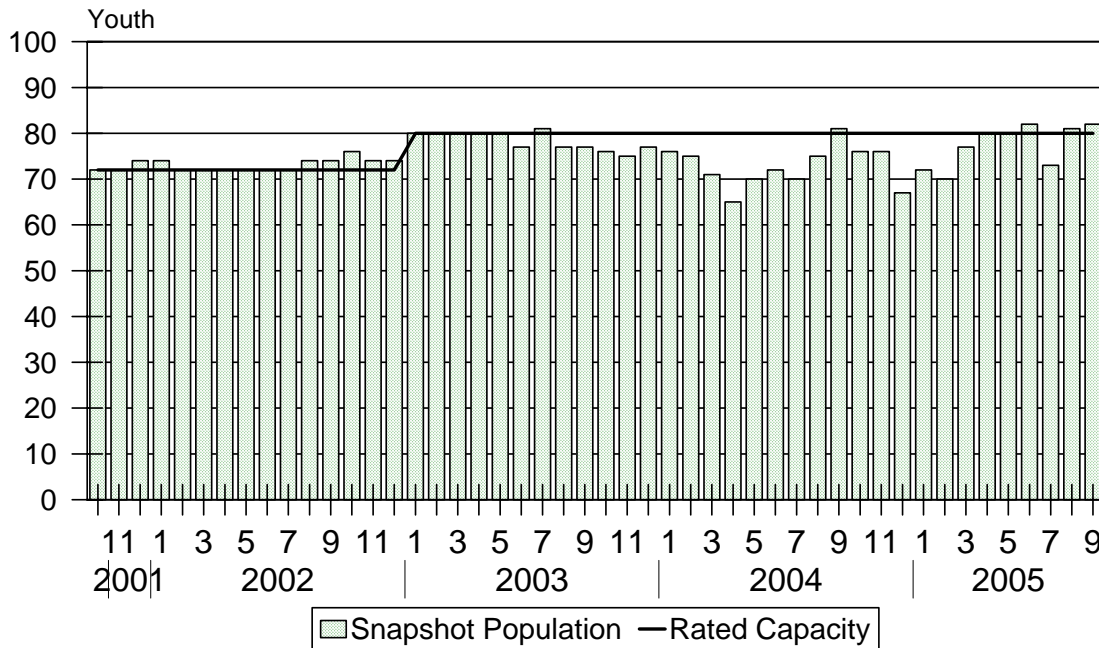


Ferris School Snapshot Population and Rated Capacity



Snapshot populations are taken at the end of any given month. The Ferris School capacity increased from 72 beds to 80 beds during January 2003.

Ferris School Admissions and Time at Ferris School



Length of Stay: Average length of stay in days at the Ferris School given monthly admissions and populations.

## Admissions, Third Quarter 2005.

Month	Number	Percent
July	7	20
August	16	46
September	12	34
Total	35	100

## Admission Demographics, Third Quarter 2005.

Race/ethnicity and age	Total	
	Number	Percent
African American		
14	1	3
15	6	17
16	4	11
17	13	37
Subtotal	24	69
White		
15	3	9
16	3	9
17	4	11
18	1	3
Subtotal	11	31
Total	35	100

Admissions Profile for  
Third Quarter 2005 Ferris School Admittees.

Admissions	<u>Youth</u>			<u>Admissions</u>		
	Number	Percent	Cum. %	Number	Percent	Cum. %
Total	35	100%	100%	214	100%	100%
First admission	0	.	.	0	.	.
Multiple admissions	35	100%	100%	214	100%	100%
2 <sup>nd</sup>	5	14%	14%	10	5%	5%
3 <sup>rd</sup>	5	14%	29%	15	7%	12%
4 <sup>th</sup>	3	9%	37%	12	6%	17%
5 <sup>th</sup>	7	20%	57%	35	16%	34%
6 <sup>th</sup>	2	6%	63%	12	6%	39%
7 <sup>th</sup>	1	3%	66%	7	3%	43%
8 <sup>th</sup>	4	11%	77%	32	15%	57%
9 <sup>th</sup>	3	9%	86%	27	13%	70%
10 <sup>th</sup>	0	.	86%	0	.	70%
11 <sup>th</sup>	1	3%	89%	11	5%	75%
12 <sup>th</sup>	0	.	89%	0	.	75%
13 <sup>th</sup>	3	9%	97%	39	18%	93%
14 <sup>th</sup>	1	3%	100%	14	7%	100%

Note: First admission means that, heretofore, a juvenile had never been admitted to Secure Detention, Level III Residential, Level IV, Level V, or Division of Family Services (DFS) and Child Mental Health (CMH) programs that provide residential services. Included in the count of multiple admissions are those admitted to Secure Detention, Level III Residential, Level IV, Level V, and DFS and CMH programs that provide residential services which are classified by DSCYF as crisis bed; mental health; residential group care; treatment center; residential Interagency Collaborative Team; residential treatment, mental health; and residential treatment, substance abuse.

**Admission Profile by Dispositional  
Level for Third Quarter 2005 Ferris School Admittees.**

Admissions	Number and percent of youth							
	<u>Sec. Det.</u>		<u>L. V</u>		<u>L. IV</u>		<u>L. IIIR</u>	
	N.	%	N.	%	N.	%	N.	%
Total	35	100%	35	100%	35	100%	35	100%
No prior admissions	3	9%	11	31%	15	43%	30	86%
Multiple admissions	32	91%	24	69%	20	57%	5	14%
2 <sup>nd</sup>	7	20%	14	40%	10	29%	3	9%
3 <sup>rd</sup>	10	29%	6	17%	6	17%	2	6%
4 <sup>th</sup>	4	11%	2	6%	2	6%	0	.
5 <sup>th</sup>	4	11%	2	6%	1	3%	0	.
6 <sup>th</sup>	3	9%	0	.	1	3%	0	.
7 <sup>th</sup>	3	9%	0	.	0	.	0	.
8 <sup>th</sup>	1	3%	0	.	0	.	0	.

Note: Included in the count of multiple admissions are those admitted to Secure Detention (Sec. Det.), Level III Residential (L. IIIR), Level IV, Level V, and Division of Family Services and Child Mental Health programs that provide residential services which are classified by DSCYF as crisis bed; mental health; residential group care; treatment center; residential Interagency Collaborative Team; residential treatment, mental health; and residential treatment, substance abuse.

Reading this table: This table shows that 91 percent of youth admitted to the Ferris School during the third quarter of 2005 had prior admissions to secure detention, 69 percent to Level V, 57 percent to Level IV, and 14 percent to Level IIIR. All youth without prior Level V admissions had prior admissions to Secure Detention.

### Leading Charge at Admission, Third Quarter 2005.

Leading charge	
Assault in the second degree	3
Burglary in the second degree	2
Burglary in the third degree	1
Carjacking in the first degree, class B felony	1
Conspiracy in the second degree	2
Criminal trespassing in the first degree	1
Distribution of a controlled substance within 300 feet of a park	1
Forgery in the third degree	1
Possession of a deadly weapon by a person prohibited, firearm	4
Possession of a deadly weapon during the commission of a felony	1
Possession of a weapon with a removed serial number	1
Possession of drug paraphernalia	1
Possession of a non-controlled drug	1
Possession or use of a non-narcotic	1
Possession with intent to deliver narcotics	4
Robbery in the first degree	3
Robbery in the second degree	1
Terroristic threatening, misdemeanor	1
Underage possession or consumption of alcohol	1
Violation of probation	4
<b>Total</b>	<b>35</b>

Crime Category at Admission, Third Quarter 2005.

<u>Category</u>	<u>Number</u>	<u>Percent</u>
Violent felony	17	49
Violent misdemeanor	1	3
Non-violent felony	7	20
Non-violent misdemeanor	5	14
Unclassified misdemeanor	1	3
Probation violation	4	11
Total	35	100

Length of Stay on September 30, 2005.

<u>LOS in intervals</u>	<u>Youth</u>	<u>Length of Stay</u>		
	<u>Number</u>	<u>Average</u>	<u>Median</u>	<u>Maximum</u>
1 to 3 days	3	2	2	2
4 to 14 days	2	9	9	9
15 to 29 days	5	16	16	18
30 to 59 days	14	47	48	59
60 to 119 days	19	84	86	108
120 to 179 days	22	141	135	177
180 plus days	17	216	205	375
Summary	82	111	100	375

Legal Status by Average LOS at Snapshot on September 30, 2005.

	<u>Aftercare Revocation</u>		<u>Sentenced</u>		<u>Total</u>	
	<u>No.</u>	<u>LOS</u>	<u>No.</u>	<u>LOS</u>	<u>No.</u>	<u>LOS</u>
Family Court	0	.	81	110	81	110
30 days or less	0	.	12	14	12	14
31 days or more	0	.	69	127	69	127
Superior Court	0	.	1	170	1	170
120 days or less	0	.	0	.	0	.
121 days or more	0	.	1	170	1	170
Total	0	.	82	111	82	111

Population Demographics on September 30, 2005.

Race/ethnicity and age	Total	
	Number	Percent
African American		
14	2	2
15	9	11
16	14	17
17	28	34
18	9	11
Subtotal	62	76
White		
15	4	5
16	5	6
17	5	6
18	6	7
Subtotal	20	24
Total	82	100

Youth's Involvement on September 30, 2005.

Sentenced		
Aftercare	5	83
Child Mental Health	16	111
Division of Family Services	12	107
Serious Juvenile Offender and Comprehensive Aftercare Program	52	116
Indefinite sentence	45	110
Mandatory sentence	36	111
Family Court	81	110
Superior Court	1	170



## Releases, Third Quarter 2005.

To whom released/program	Number	Percent	LOS in days	
			Mean	Maximum
Mowlds Cottage	31	100	200	262
Total	31	100	200	262

## Legal Status by Average LOS at Release, Third Quarter 2005.

	<u>Aftercare Revocation</u>		<u>Sentenced</u>		<u>Total</u>	
	No.	LOS	No.	LOS	No.	LOS
Family Court	1	229	30	199	31	200
30 days or less	0	.	0	.	0	.
31 days or more	1	229	30	199	31	200
Superior Court	0	0	0	0	0	0
120 days or less	0	.	0	.	0	.
121 days or more	0	.	0	.	0	.
Total	1	229	30	199	31	200

## Crime Category at Release, Third Quarter 2005.

Category	Number	Percent	LOS in days		
			Minimum	Mean	Maximum
Violent felony	6	19	141	186	212
Violent misdemeanor	2	6	197	209	220
Non-violent felony	7	23	155	214	262
Non-violent misdemeanor	4	13	170	209	254
Traffic misdemeanor	1	3	218	218	218
Probation violation	9	29	160	189	260
Aftercare revocation	1	3	229	229	229
Drug Court violation	1	3	186	186	186
Total	31	100	141	200	262

Distribution of Ferris School Releases by LOS, Third Quarter 2005.

