
Delaware Juvenile Recidivism

1994 – 2004 Juvenile Level III, IV and V Recidivism Study

May 2005



State of Delaware
Office of the Budget
Statistical Analysis Center

Delaware Juvenile Recidivism:
1994 – 2004 Juvenile Level III, IV and V Recidivism Study.

Prepared by the Statistical Analysis Center, Office of the Budget, State of Delaware.

Authors:
Jorge Rodríguez-Labarca, Senior Analyst,
John P. O'Connell, Director.

State of Delaware Document Number: 100208-050502.

Table of Contents

Introduction.....	1
FY03 Recidivism Summary	2
FY03 12 Month Recidivism Rates.....	3
Interpreting Recidivism Results: A Caution.....	5
Different Measures of Recidivism.....	6
Total Re-arrest Patterns	6
Comparing Misdemeanor Plus Felony and Felony Only Re-Arrests Recidivism Rates	8
Re-admission Recidivism.....	10
Technical Note: Measuring Recidivism	12
Residential Level V, IV, and III Felony Recidivism Tables	13
Data Sources	51
Criminal Justice Information System Data.....	51
Juvenile Placement Data.....	52
Secure Placement Episodes	52
Level III, IV and V Recidivism Study Dataset.....	53
DYRS/DOC Re-admission Recidivism Dataset	54
Appendix.....	55
Historical Recidivism Rates	55

Table of Displays

Level V Displays	15
Display 1, Level V Felony Recidivism Rates	15
Display 2, Corrections Corporation of America, Shelby Training School Felony Recidivism Rates.....	16
Display 3, Ferris School for Boys Felony Recidivism Rates	17
Display 4, New Castle County Detention Center Adjudicated Felony Recidivism Rates	18
Display 5, Stevenson House Detention Center Adjudicated Felony Recidivism Rates	19
Display 6, Level V Small Program Felony Recidivism Rates.....	20
Level IV Displays	21
Display 7, Level IV Felony Recidivism Rates	21
Display 8, Chamberlain Academy, General, Felony Recidivism Rates	22
Display 9, Chamberlain Academy, High Impact, Felony Recidivism Rates.....	23
Display 10, Clarinda Academy Felony Recidivism Rates.....	24
Display 11, Glen Mills Schools Felony Recidivism Rates.....	25
Display 12, Grace Cottage, Long Term, Felony Recidivism Rates.....	26
Display 13, Grace Cottage, Shelter Services, Felony Recidivism Rates.....	27
Display 14, Grace Cottage, Short Term, Felony Recidivism Rates	28
Display 15, Mountain Manor Felony Recidivism Rates.....	29
Display 16, Mowlds Cottage Felony Recidivism Rates	30
Display 17, Snowden Cottage Felony Recidivism Rates	31
Display 18, Springfield Academy Felony Recidivism Rates	32
Display 19, Today Inc., General, Felony Recidivism Rates.....	33
Display 20, VisionQuest, Boot Camp, Felony Recidivism Rates	34
Display 21, VisionQuest, Madalyn Program, Felony Recidivism Rates.....	35
Display 22, VisionQuest, New Directions Shelter, Felony Recidivism Rates	36
Display 23, VisionQuest, Quest, Felony Recidivism Rates	37
Display 24, Level IV Small Program Felony Recidivism Rates	38

Level III Displays.....	47
Display 25, Level III Residential Felony Recidivism Rates.....	47
Display 26, Camelot, General, Felony Recidivism Rates.....	48
Display 27, People’s Place II Felony Recidivism Rates.....	49
Display 28, Level III Small Program Felony Recidivism Rates.....	50
Historical Recidivism Displays.....	55
Display 29, Level V Historical Program Felony Recidivism Rates.....	56
Display 30, Level IV Historical Program Felony Recidivism Rates.....	57
Display 31, Level III Historical Program Felony Recidivism Rates.....	64

Table of Graphs

Figure 1, FY03 Re-arrest Recidivism 1 Year Following Level V Release.....	6
Figure 2, FY03 Re-arrest Recidivism 1 Year Following Level IV Release.....	7
Figure 3, FY03 Re-arrest Recidivism 1 Year Following Level IIIIR Release.....	7

Table of Tables

Table 1, Youth Arrested for a Felony within 12 Months of Release from a Level V Episode, FY03 Releases.....	3
Table 2, Youth Arrested for a Felony within 12 Months of Release from a Level IV Episode, FY03 Releases.....	4
Table 3, Youth Arrested for a Felony within 12 Months of Release from a Level III Episode, FY03 Releases.....	5
Table 4, Delaware 12 Month Juvenile Recidivism Rates: A Comparison of Misdemeanor-Felony and Felony Arrest Analysis.....	9
Table 5, Re-admission Rates:.....	11
Table 6, Level V Felony Recidivism Rates.....	13

Intentionally Blank

Introduction

This study provides comprehensive recidivism rates for juvenile offenders released from out of home residential placements by the Department of Services for Children, Youth and Their Families (DSCYF) Division of Youth Rehabilitative Services (DYRS) between 1994 and 2004.¹ There are two major levels of security related to out-of-home residential placements: secure and non-secure. Under Delaware's Dispositional Guidelines for Juveniles, youth can be sentenced to these different program levels as well as probation. The program levels reflect a graduated approach that requires increasingly intensive programming according to risk and need assessments of each juvenile. The more intensive programming corresponds to secure placements, the less intensive to non-secure placements:

- Level V, the most intensive programming available, is comprised of locked secure institutional settings like the Ferris School for Boys.
- Level IV staff secure programs provide 24 hour supervision and general diagnostic, substance abuse and sex offender treatment.
- Level IIIIR programs, although providing residential programming, operate in non-secure settings.

Many of the placements are provided via contracted private organizations both in Delaware and out-of-state. Recidivism rates and detailed juvenile offender profiles are presented for 122 separate institutions and public and private residential programs.

The main measure of recidivism used in this study is a felony re-arrest – not a re-conviction or a re-admission – following release from a placement. Recidivism rates are reported for four different at-risk intervals: 6, 12, 18, and 24 months. Many juvenile recidivism studies report truncated results because they stop following the juveniles once they reach the age of majority. This study does not truncate results because Delaware arrests can be tracked through an offender's adult years.

Juvenile justice policymakers established the use of the felony re-arrest rate as the main measure of recidivism for this study in October of 1998. It was determined that the felony re-arrest rate tapped some of our most reliable data and that, furthermore, it provides the possibility for a *fairer* cross-jurisdictional comparison of recidivism rates. While the felony re-arrest rate is a viable measure of recidivism, it is preferable to measure recidivism using multiple measures. Where re-arrest highlights public safety risks to the community, re-detention underscores the court's willingness to remove a juvenile arrestee from the community, at least temporarily, and re-incarceration would highlight the Family Court's affirmation of guilt for a new crime.

As a means of providing a fuller understanding of juvenile criminal behavior and recidivism two additional views of recidivism are provided in the introductory part this study. In

¹ Due to the use of the latest available placement data information for each edition of this report, the release counts, felony recidivism rates, and historical profiles presented in this document are not comparable to information presented in previous reports. See page 53 for a detailed explanation of how the dataset was constructed for this study.

addition to the *main* felony re-arrest measure, the full view of all re-arrests (by type of arrest) is examined for FY03. Second, the FY94 to FY03 felony plus the misdemeanor re-arrest pattern is examined.

FY03 Recidivism Summary

Juveniles were tracked for at least 12 months after their release from 4,588 Level V placement episodes that occurred between FY95 and FY03². Between FY96 (the State's fiscal year runs from July to June) and FY03 (the last year that a full cohort of releases could be studied for being at-risk for 12 months,) the recidivism rate has decreased from 60 percent for youth released during FY96 to 43 percent for those released in FY03. The average length of stay in a Level V secure setting increased between FY95 and FY00 from 3.1 to 4.5 months. Since then, the Level V average length of stay decreased to 3.4 months. See page 15 for more details on Level V recidivism rates.

Juveniles were tracked for at least 12 months after their release from 4,316 Level IV placement episodes. Excluding an increase in the recidivism rate between FY95 and FY96, the recidivism rate decreased from 54 percent in FY96 to 45 percent in FY03 – a 16 percent decrease in felony re-arrest recidivism. The average length of stay in a Level IV secure setting decreased during this time period from 7.0 to 3.2 months. See page 21 for more details on Level IV recidivism rates.

Juveniles were tracked for at least 12 months after their release from 862 Level III placement episodes. Excluding an increase in the recidivism rate between FY97 and FY99, the recidivism rate has decreased from 35 percent in FY96 to 24 percent in FY03 – a 31 percent reduction in felony re-arrest recidivism. The average length of stay in a Level III non-secure setting decreased during this time period from 5.9 months to about two weeks. See page 47 for more details on Level III recidivism rates.

The tables below – Tables 1, 2, 3 – provide the FY03 felony re-arrest and summary by level of sanction and by individual programs within each level. Recidivism is reported at one year at risk after release from the secure placement episode. These recidivism results are the most recent available because a full year must pass before recidivism statistics can be calculated for a cohort.

² See the explanations of placement episodes on pages 12 and 52 of this document.

FY03 12 Month Recidivism Rates

The Level V FY03 release cohort recidivism rate at 12 months at-risk for a felony arrest is 43 percent. The following table shows the FY03 12 month recidivism rate for Level V programs.

Table 1, Youth Arrested for a Felony within
12 Months of Release from a Level V Episode, FY03 Releases

Program	No. Released	No. Arrested	Recidivism Rate
New Castle County Detention Center, DE	265	120	45%
Stevenson House Detention Center, DE	156	51	33%
The Ferris School for Boys, DE	129	63	49%
C.C.A., Shelby Training Center, TN	2	2	100%
C.C.A., South West Indiana Youth Village, Secure, IN	2	2	100%
C.C.A., South West Indiana Youth Village, Drug and Alcohol, IN	1	1	100%
Level V Episodes ³	489	212	43%

³ Please note that secure placement episode statistics within a level are not additive. Double counting would occur if an attempt was made to sum to a Level V total because a Level V episode may include admissions to more than one Level V program.

The Level IV FY03 release cohort recidivism rate for a felony arrest is 45 percent. The following table shows the FY03 12 month recidivism rate for Level IV programs.

**Table 2, Youth Arrested for a Felony within
12 Months of Release from a Level IV Episode, FY03 Releases**

Program	No. Released	No. Arrested	Recidivism Rate
Snowden Cottage, DE	138	61	44%
VisionQuest, Boot Camp, PA	109	54	50%
Clarinda Academy, IA	49	29	59%
Mowlds Cottage, DE	42	17	40%
Glenn Mills Schools, PA	38	21	55%
F.C.C., Grace Cottage, Long Term, DE	24	1	4%
Chamberlain Academy, High Impact, SD	17	7	41%
VisionQuest, Quest, PA	14	9	64%
Today Inc., General, PA	12	6	50%
Mountain Manor, MD	11	5	45%
Springfield Academy, SD	10	7	70%
VisionQuest, Madalyn Program, PA	5	0	0%
Hennepin County Home School, MN	4	0	0%
New Hope, Triad Program, SC	4	1	25%
New Hope, Way Point Program, SC	4	2	50%
Excelsior, General, CO	3	0	0%
New Hope, Starting Pointe, SC	3	1	33%
The Pines, The Phoenix Program, TN	3	1	33%
Today Inc., New Dawn, PA	3	1	33%
Chamberlain Academy, General, SD	2	0	0%
Diversified Treatment Alternatives, PA	2	0	0%
The Pines, Behavioral Program, VA	2	1	50%
The Pines, General, VA	2	0	0%
Au Clair School, General, DE	1	1	100%
Bowling Brook Preparatory School, MD	1	1	100%
F.C.C., Grace Cottage, Shelter, DE	1	0	0%
F.C.C., Grace Cottage, Short Term, DE	1	0	0%
KidsPeace, General, PA	1	0	0%
New Hope, Palmetto Point, SC	1	0	0%
Riverside Treatment Services, Inc., D.C.	1	0	0%
The Pines, Cooperative Program, VA	1	1	100%
The Pines, The Cottage Program, VA	1	0	0%
The Pines, Young Men/Women's Center, VA	1	1	100%
Vision Quest, Lady of the Lakes	1	0	0%
Level IV Episodes	496	224	45%

The Level III FY03 release cohort recidivism rate at 12 months at-risk for a felony arrest is 24 percent. The following table shows the FY03 12 month recidivism rate for Level III programs.

Table 3, Youth Arrested for a Felony within
12 Months of Release from a Level III Episode, FY03 Releases

Program	No. Released	No. Arrested	Recidivism Rate
People's Place II, DE	149	33	22%
Camelot, General, DE	16	6	38%
Level III Episodes	165	39	24%

Interpreting Recidivism Results: A Caution

Interpretations of the recidivism results in this study can be made for general types of programs like Level V or Level IV and for a specific program over time. Caution, however, should be exercised when comparing a specific program with another. It might be assumed that all Level IV programs are similar and therefore comparable in terms of recidivism. Whereas this may be true for some programs, it may not be for others. For instance, a Level IV shelter where juveniles are held for two or three weeks awaiting placement is not the same as a one year, or even a three month Level IV program that provides extensive counseling. Juvenile programs also differ significantly in the type of offender they are willing to serve: not all programs are geared toward providing services to youth with multiple unsuccessful prior placements, some prefer instead to service offenders without prior placements.

It is also important to realize that youth with more extensive criminal histories are more likely to have higher recidivism rates. Prior criminal history patterns differ significantly from program to program and even from year to year within a program. Fortunately, this study provides length of stay and prior criminal history summaries for each program. The historical profiles provided in this report should be helpful in framing discussions regarding juvenile recidivism.

Different Measures of Recidivism

Measuring recidivism as a re-arrest or a re-admission is an important research and policy issue. It is preferable to measure recidivism using multiple measures where re-arrest highlights public safety risks to the community, re-detention underscores the court's willingness to remove a juvenile arrestee from the community, at least temporarily, and re-incarceration highlights the Family Court's affirmation of guilt for a new crime.

This study, at the request of policy makers in October 1998, assesses DYRS recidivism in terms of felony re-arrest. This, it is believed, provides the possibility for a *fairer* cross jurisdictional comparison of recidivism rates. Re-detention information, although not used as an explicit recidivism measure, is reported as a part of the *offender profile* in this study. That is, the reader can compare the relationship between the average number of prior detention episodes for a specific release cohort and that cohort's felony re-arrest rate. No information is provided in this report regarding re-conviction because the data systems are not systematically capable of providing this information. While the major purpose of this report is to provide felony re-arrest recidivism rates for the 11,130 release events between July 1994 and June 2004 for all DYRS Level III residential (IIR), Level IV and Level V programs and institutions, re-arrest information is also collected for misdemeanors and technical or administrative measures. This more extensive arrest information provides valuable background information regarding juvenile crime patterns after release from DYRS programs and institutions.

Total Re-arrest Patterns

The pie charts below show FY03 re-arrest recidivism rates for released juveniles at-risk at least 12 months. Three different types of recidivism are displayed in each of these graphs: (1) Recidivism where a felony arrest constitutes the most serious criminal activity after release, and (2) where a misdemeanor arrest constitutes the most serious criminal event, and (3) violation of probation (VOP) arrests.

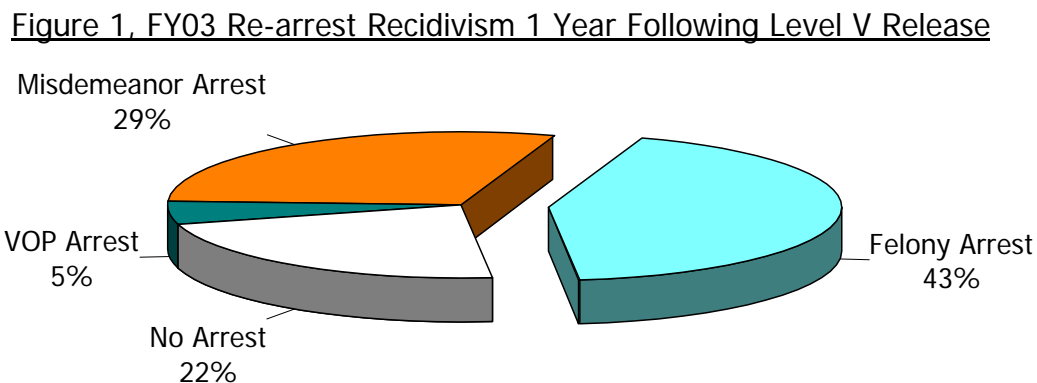


Figure 1 shows the recidivism patterns for the 489 FY03 releases from Level V placement episodes after one year at-risk. Seventy-seven percent of the Level V releasees were re-arrested within one year. Forty-three percent had felony re-arrests, 29 percent had re-arrests where a misdemeanor was the most serious charge, and another five percent were re-arrested only for violations of probation.

Figure 2 shows the recidivism patterns for the 497 FY03 releases from a Level IV placement episode. Seventy-eight percent of the Level IV releasees were re-arrested within one year. Forty-five percent had felony re-arrests, 27 percent had re-arrests where a misdemeanor was the most serious charge, and another six percent were re-arrested only for violations of probation. When the full range of re-arrest recidivism is considered, there is very little difference associated whether a juvenile was released from a Level IV or V program.

Figure 3 shows the recidivism patterns for the 165 FY03 releases from a Level IIIR placement episode. Seventy-two percent of the Level IIIR releasees were re-arrested within one year. Twenty-four percent had felony re-arrests, 43 percent had re-arrests where a misdemeanor was the most serious charge, and another five percent were re-arrested only for violations of probation. Level IIIR releases were not only less likely to be re-arrested in the year following release from a program, they were also far less likely to be re-arrested for a felony.

Figure 2, FY03 Re-arrest Recidivism 1 Year Following Level IV Release

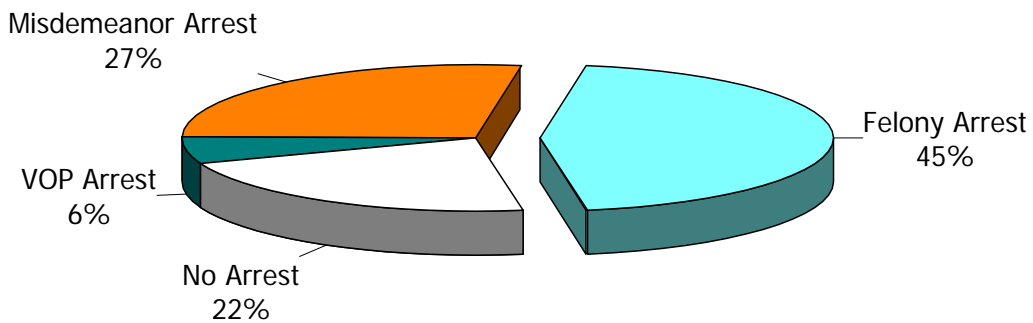
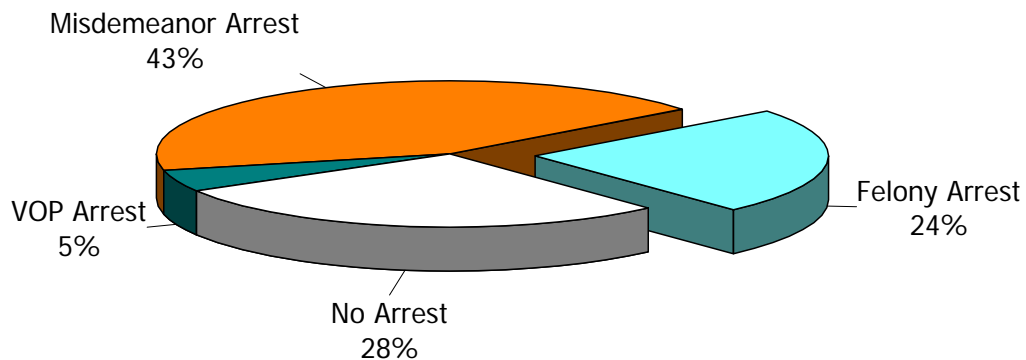


Figure 3, FY03 Re-arrest Recidivism 1 Year Following Level IIIR Release



Comparing Misdemeanor Plus Felony and Felony Only Re-Arrests Recidivism Rates

Another perspective on recidivism is arrests for new crimes only. Proponents of this perspective exclude arrests for violations of probation. Many violations of probation arrests are closely associated with intensive supervision programs where juveniles are arrested, not for breaking the law, but for violating the conditions of their sentencing orders, including failing to fully comply with the conditions of the intensive supervision program.

In some situations, violations of probation, when added to the recidivism for new crimes can make an intensive supervision program appear more punitive than it was designed to be. For example, the Serious Juvenile Offender program had 38 percent more technical arrests than a similar group of delinquents that were not part of the program.⁴ Although some may view an arrest for a violation of probation as a less serious than an arrest for a new crime, an arrest for a technical violation is just as likely to result in a re-incarceration as a felony arrest (70 percent versus 71 percent) and much *more* likely to result in a re-incarceration than a misdemeanor arrest (70 percent versus 48 percent.)⁵ Violations of probation are by far the leading charge at admission to the detention centers and a significant contributor to their overcrowding. Therefore, while conceptually not as serious as a new crime, the impact of a technical violation arrest is just as significant as a new felony arrest. Because this finding is still new, many policy makers are more comfortable assessing recidivism in terms of arrest for new crimes only.

Table 4, *Delaware 12 Month Juvenile Recidivism Rates*, shows that the reduction in felony re-arrest recidivism was actually greater for Level V than for Level IV programs. Between FY96 and FY03, the 12 month Level V felony re-arrest recidivism rate decreased from 60 percent to 43 percent: a 17 percentage point decrease. For the same time period the 12 month Level IV felony re-arrest recidivism rate, while still decreasing, decreased 9 percentage points – from 54 percent to 45 percent. The decrease in felony and misdemeanor recidivism is similar over time to the reduction in felony re-arrest recidivism. Between FY96 and FY03, the reduction in felony and misdemeanor re-arrests was eight percentage points for Level V and six percentage points for Level IV. It is interesting to note that even though the Delaware juvenile justice system implemented graduated sanctions in the mid-1990s, there has been a more significant decrease in felony re-arrests (nine to 17 percentage points) than for the combination of misdemeanor plus felony re-arrests (six to eight percentage points).

⁴ Delaware's Serious Juvenile Offender Program, SAC, August 2004, p. 24.

⁵ *Ibid*, p. 3.

Table 4, Delaware 12 Month Juvenile Recidivism Rates:
A Comparison of Misdemeanor-Felony and Felony Arrest Analysis

Level Release Cohort	Misdemeanor and Felony Analysis			Felony Analysis		
	N. Released	N. Arrested	Rate	N. Released	N. Arrested	Rate
Level IV						
FY 95	155	108	70%	155	74	48%
FY 96	268	209	78%	268	144	54%
FY 97	299	224	75%	299	152	51%
FY 98	495	388	78%	495	244	49%
FY 99	534	410	77%	534	251	47%
FY 00	528	379	72%	528	230	44%
FY 01	518	355	69%	518	211	41%
FY 02	632	450	71%	632	259	41%
FY 03	497	358	72%	497	224	45%
Level V						
FY 95	360	285	79%	360	210	58%
FY 96	489	393	80%	489	293	60%
FY 97	447	347	78%	447	232	52%
FY 98	363	276	76%	363	164	45%
FY 99	398	291	73%	398	185	47%
FY 00	482	340	71%	482	208	43%
FY 01	516	358	69%	516	221	43%
FY 02	503	364	72%	503	237	47%
FY 03	489	354	72%	489	212	43%

Note: Analysis excludes arrests for municipal ordinances, non-DUI related traffic offenses and technical violations.

Re-admission Recidivism

Policy makers decided, in October 1998, that Delaware should assess DYRS recidivism in terms of felony re-arrests. Measuring recidivism in terms of re-arrests allows us to know what the propensity to be arrested for new crimes is and to track repeat criminality over time. Re-arrest recidivism gives the reader a sense of the degree to which DYRS can increase public safety. The expectation is that the programming offered by DYRS to juvenile offenders will decrease their future propensity to commit future crimes and thus re-admission to juvenile or adult facilities. This study reports on juvenile re-detention and re-incarceration information so that readers can assess the relationship between prior detentions or incarcerations and felony re-arrest rates.

Another measure of the relationship between programming and increased public safety is the re-admission of offenders released from DYRS programs to juvenile or adult facilities. This is a new measure of recidivism introduced to this year's study. It represents a first step in answering the question: How do our juveniles do after they leave the juvenile justice system? Do they continue to phase-out of the criminal justice system, as the DYRS downward trend in long term felony recidivism rates would indicate? Or, do they become the first wave of new admissions to the Department of Correction. This year we explore these questions for juveniles who have been released from DYRS Level V facilities. Remember, these are not typical juveniles, as the Level V recidivism chart shows, these juveniles have, on average, already been detained 2.8 times, admitted to juvenile incarceration 2.1 times and have 7.7 prior arrests.

The 12 month FY97 Level V release cohort recidivism rate for a readmission to a juvenile and/or an adult detention, Level IV or Level V placement is 69 percent. Given that the average juvenile offender entering a DYRS Level V program is 16 years old, one would expect that the great majority of offenders re-admitted to a secure program or facility would be re-admitted to DYRS. Thus it is not surprising that the 12 month secure DYRS re-admission rate is 50 percent, but that for older youth that reach the age of majority that the DOC re-admission rate is 36 percent. Because the total secure re-admission rate is 69 percent, it easy to see that some of the youth are *re-admitted* to both YRS and DOC facilities within one year of release from a YRS Level V facility or program.

As time passes juvenile offenders reach the age of majority and age-out of the juvenile system. The most recent cohort where all offenders had reached the age of majority at the end of this study's follow-up period is the FY97 Level V release cohort. At release, members of the FY97 Level V cohort ranged from 12 years to 20 years of age. Obviously, those who were under 18 years of age at release were released from a DYRS facility or program. However, the 18 to 20 year olds, after completing their DYRS Level V placement episodes were transferred to DOC and then were released from DOC facilities directly to the community. Thus, only analysis of the FY97 Level V cohort can answer this critical policy question: How many juvenile offenders move to the adult system? Three hundred sixty three of the 416 offenders in the FY97 Level V cohort moved to the adult system as either pre-trial detainees or sentenced Level IV or V offenders, for an overall DOC re-admission rate of 87 percent.

Table 5 provides detailed re-admission summaries for the FY97 Level V juvenile release cohort. Keeping in mind that the FY97 release cohort is the most recent group of releases that lets us see the full impact of serious offender juveniles moving from the juvenile to the adult system, one can see that by the two year at-risk threshold, 53 percent of the juveniles released from a DYRS Level V placement episode were re-admitted to DYRS detention, Level IV or Level V program. After the second year at risk there are only the smallest of changes in the DYRS component of re-admission recidivism because the juveniles in this cohort have reached the age of majority. And, as may be expected, as they reach the age of majority the adult re-admission rate increases rapidly. Five years after their release from a DYRS Level V placement episode, the FY97 release cohort reaches a DOC re-admission recidivism rate of 85 percent.

It is very important when examining Table 5 to realize that an offender recidivating to both a YRS and a DOC setting is only counted once for the total recidivism rate or *re-admission to YRS/DOC SD, LIV, LV*. Thus where the DOC five year re-admission rate for the FY97 cohort is 85 percent, offenders who had been re-admitted to a YRS facility before they reached the age of majority are not counted twice.

Table 5, Re-admission Rates:
A Comparison of DYRS and DOC Readmissions

FY97 Level V release cohort, n=416	Time Since Release							
	6 mo.	12 mo.	18 mo.	2 years	3 years	4 years	5 years	6 years
Re-admission to YRS/DOC SD, L IV, L V ⁶	50%	69%	78%	82%	89%	91%	92%	92%
Re-admission to YRS	38%	50%	53%	53%	54%	54%	54%	54%
Re-admission to SD	31%	43%	47%	48%	49%	49%	49%	49%
Re-admission to L IV	13%	20%	23%	25%	25%	25%	25%	25%
Re-admission to L V	22%	32%	36%	37%	38%	38%	38%	38%
Re-admission to DOC	20%	36%	51%	62%	76%	82%	85%	87%
Re-admission to SD	19%	35%	50%	61%	75%	81%	84%	86%
Re-admission to L IV	7%	13%	21%	28%	40%	47%	51%	53%
Re-admission to L V	11%	20%	31%	44%	56%	65%	70%	72%

⁶ SD: secure detention; L IV: quasi-incarceration, e.g., staff secure DYRS program or a DOC L IV held at L V; L V: a locked correctional facility.

Technical Note: Measuring Recidivism

The FY05 Budget Act, 74 Del. Laws c. 307 § 63, authorizes the Delaware Statistical Analysis Center (SAC) with preparing this report. Juvenile justice policy makers requested in October 1998 that SAC assess DYRS recidivism in terms of felony re-arrests. Thus, in this study recidivism is defined as a new felony arrest in Delaware. Recidivism is measured when a youth is arrested for a felony in Delaware after being released from a DYRS Level III, IV or V placement episode. Recidivism is reported as the percentage of persons released who are re-arrested following release. Arrests for technical violations, traffic offenses not related to driving under the influence or motor vehicle theft, and misdemeanors are not included in the remainder of this study.

Traditionally, recidivism is measured from the date of release from an institution or a residential placement. This measure is valid for systems that take youth from the street, incarcerate them, and then release them back to the street. Delaware's juvenile system is much more likely to place the juvenile offender in a series of secure placements before a youth is released to the community. The methodology in this report captures the contiguous and serial institutionalization of a juvenile as a *secure placement episode*.

Secure placement episodes comprise an uninterrupted period of time when a youth is not in the community and may include multiple releases from secure residential placements. For example, the typical Ferris School for Boys placement episode includes three contiguous placements: (1) admission to the Detention Center, (2) admission to the Ferris School, and (3) transition back to the community through Mowlds Cottage. The at-risk period for the juvenile who had a typical Ferris School for Boys placement episode does not start until the juvenile has been released from Mowlds Cottage and is no longer in secure supervision. In this study, the post-release *at-risk* period starts when a juvenile is released to the community.

Residential Level V, IV, and III Felony Recidivism Tables

The following pages show felony recidivism rates for residential Level V, IV, and III total and selected programs in the study.

Recidivism rate tables and graphs are shown for programs that released more than 9 juveniles during fiscal years 2002, 2003 or 2004. Only recidivism rate tables are shown for small programs – programs that released less than 10 juveniles in FY02, FY03, and FY04.

Felony recidivism rates are presented in the following pages for four release thresholds: six, 12, 18, and 24 months since release. As the last releases for FY02 occurred during June, 2002, all youth in the FY02 cohort had been released at least 24 months. All youth in the FY03 cohort had been released for at least 18 months. All youth in the FY04 cohort had been released for at least 6 months on January 1, 2005.

The table below provides an explanation of how to read the remaining recidivism tables on this document. The table shows that it has been at least 18 months since all 489 youth in the FY03 Level V cohort were released. The table also shows, through the use of shading, that not all youth in that cohort had been through the 24 month threshold.

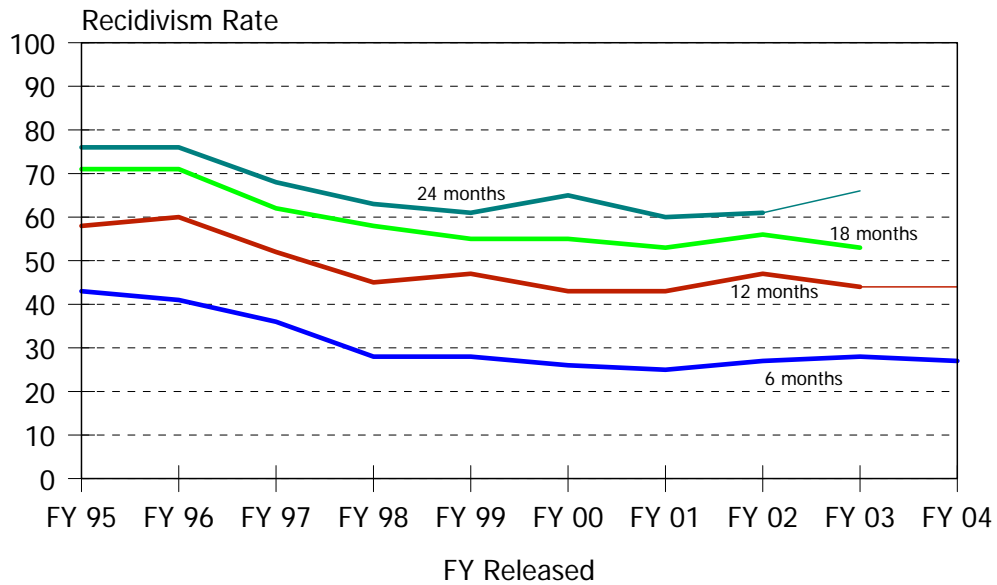
Table 6, Level V Felony Recidivism Rates

Time Period	N. Released	Months Since Release			
		6 Months	12 Months	18 Months	24 Months
FY 95	360	43%	58%	71%	76%
FY 96	489	41%	60%	71%	76%
FY 97	447	36%	52%	62%	68%
FY 98	363	28%	45%	58%	63%
FY 99 ⁷	398	28%	47%	55%	61%
FY 00	482	26%	43%	55%	65%
FY 01	516	25%	43%	53%	60%
FY 02	503	27%	47%	56%	61%
FY 03	489	28%	43%	53%	66%
FY 04	541	27%	44%	.	.

⁷ A total of 398 releases occurred during FY99 from Level V episodes. However, two juveniles died within six months of their release from Level V episodes. The recidivism rates presented in this analysis are based on the number of juveniles alive at the end of each at-risk period.

Intentionally Blank

Display 1, Level V Felony Recidivism Rates



Level V Felony Recidivism Rates

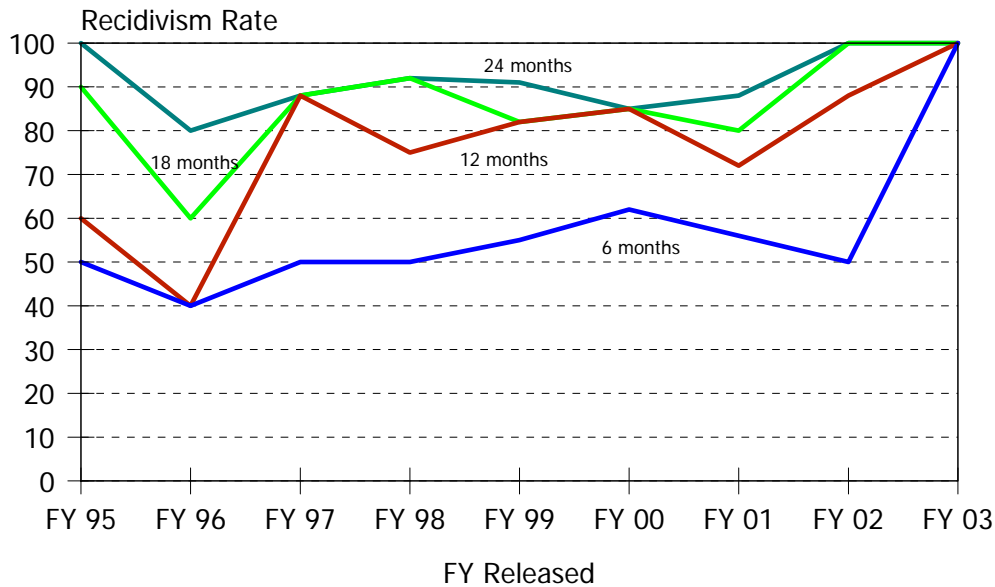
Time Period	N. Released	Months Since Release			
		6 Months	12 Months	18 Months	24 Months
FY 95	360	43%	58%	71%	76%
FY 96	489	41%	60%	71%	76%
FY 97	447	36%	52%	62%	68%
FY 98	363	28%	45%	58%	63%
FY 99	398	28%	47%	55%	61%
FY 00	482	26%	43%	55%	65%
FY 01	516	25%	43%	53%	60%
FY 02	503	27%	47%	56%	61%
FY 03	489	28%	43%	53%	66%
FY 04	541	27%	44%	.	.

Note: Shading indicates that a complete cohort has not been at-risk for the full threshold time period.

Historical Profile of Youth Released by Fiscal Year

Average	Total	Fiscal Year Released										
		95	96	97	98	99	00	01	02	03	04	
Level V LOS in months	3.7	3.1	3.0	3.8	3.5	4.5	4.5	3.9	3.9	3.6	3.4	
Placement episode LOS in months	6.8	4.4	5.8	6.8	7.4	9.1	7.5	7.7	7.3	6.4	5.8	
No. of prior detention admissions	2.8	1.7	2.1	2.4	2.5	2.7	3.0	2.9	3.1	3.2	3.6	
No. of prior incarceration admissions	2.1	1.2	1.5	1.7	1.9	2.2	2.3	2.5	2.4	2.2	2.4	
Number of prior felony arrests	2.8	3.9	3.7	3.5	2.8	2.8	2.5	2.4	2.1	2.2	2.2	
Number of prior arrests	7.7	8.6	8.8	8.6	7.6	7.4	6.9	6.8	7.3	7.4	7.6	

Display 2, Corrections Corporation of America,
Shelby Training School Felony Recidivism Rates



Time Period	N. Released	Months Since Release			
		6 Months	12 Months	18 Months	24 Months
FY 95	10	50%	60%	90%	100%
FY 96	5	40%	40%	60%	80%
FY 97	8	50%	88%	88%	88%
FY 98	12	50%	75%	92%	92%
FY 99	11	55%	82%	82%	91%
FY 00	14	62%	85%	85%	85%
FY 01	25	56%	72%	80%	88%
FY 02	16	50%	88%	100%	100%
FY 03	2	100%	100%	100%	100%

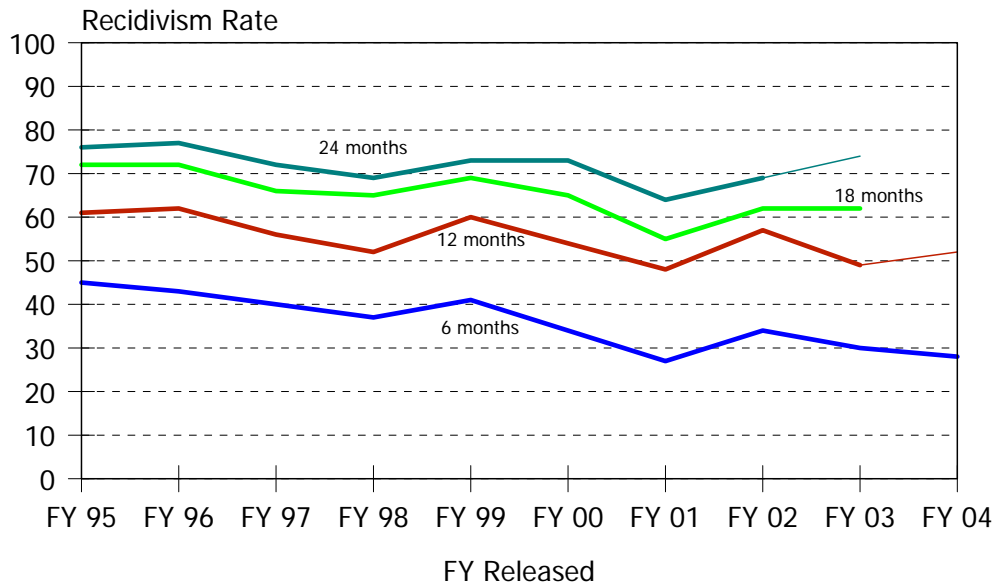
Historical Profile of Youth Released by Fiscal Year

Average	Total	Fiscal Year Released									
		95	96	97	98	99	00	01	02	03	
Shelby LOS in months	6.2	8.6	8.0	8.2	6.4	6.2	6.4	5.5	4.1	3.4	
Placement episode LOS in months	9.4	10.7	12.5	16.0	10.8	12.7	9.9	7.0	4.9	5.6	
No. prior detention admissions	4.5	2.5	2.6	2.9	4.3	3.9	5.3	5.1	6.1	5.5	
No. of prior incarceration admissions	4.6	1.3	5.0	4.5	4.4	3.6	5.8	5.2	4.9	8.5	
Number of prior felony arrests	4.3	5.0	7.6	5.1	4.0	3.5	5.4	3.8	3.1	3.5	
Number of prior arrests	10.7	12.5	12.2	14.0	11.6	7.9	10.1	9.2	10.7	15.0	

Shelby Training School provides pre-vocational, on-site educational, and zero tolerance behavioral programming for males 12 to 18 years of age. ⁸

⁸ The program descriptions contained in this document were provided by DYRS.

Display 3, Ferris School for Boys Felony Recidivism Rates



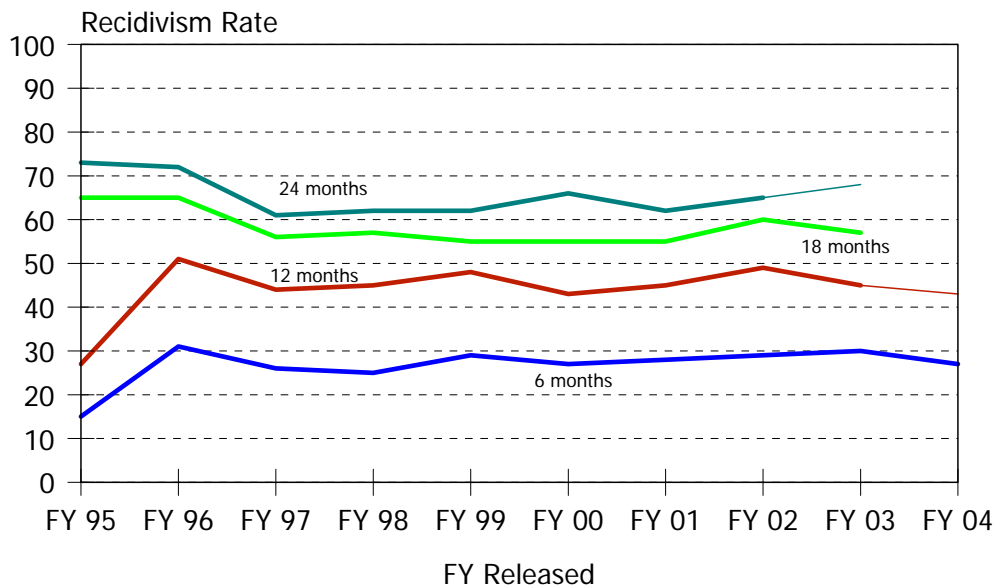
Time Period	N. Released	Months Since Release			
		6 Months	12 Months	18 Months	24 Months
FY 95	324	45%	61%	72%	76%
FY 96	413	43%	62%	72%	77%
FY 97	330	40%	56%	66%	72%
FY 98	130	37%	52%	65%	69%
FY 99	98	41%	60%	69%	73%
FY 00	122	34%	54%	65%	73%
FY 01	115	27%	48%	55%	64%
FY 02	124	34%	57%	62%	69%
FY 03	129	30%	49%	62%	74%
FY 04	146	27%	52%	.	.

Historical Profile of Youth Released by Fiscal Year

Average	Total	Fiscal Year Released										
		95	96	97	98	99	00	01	02	03	04	
Ferris School LOS in months	5.6	2.9	2.9	4.2	5.5	10.9	9.7	8.5	8.6	8.4	7.9	
Placement episode LOS in months	8.1	4.6	5.3	6.7	10.1	15.0	11.7	11.9	11.3	10.3	10.2	
No. prior detention admissions	2.7	1.7	2.1	2.4	3.0	3.0	3.5	3.0	3.6	3.7	4.2	
No. of prior incarceration admissions	2.1	1.3	1.6	1.9	2.5	2.4	2.8	3.0	2.5	2.3	2.9	
Number of prior felony arrests	3.7	4.0	3.9	4.0	4.0	3.8	3.3	3.0	3.2	3.1	3.2	
Number of prior arrests	8.8	8.8	9.1	9.5	9.2	9.0	8.2	7.2	8.5	8.4	8.8	

The Ferris School for Boys, a DYRS facility, provides programs and services to create a total learning environment for boys. The Ferris School switched to a therapeutic community in May of 1997.

Display 4, New Castle County Detention Center Adjudicated Felony Recidivism Rates



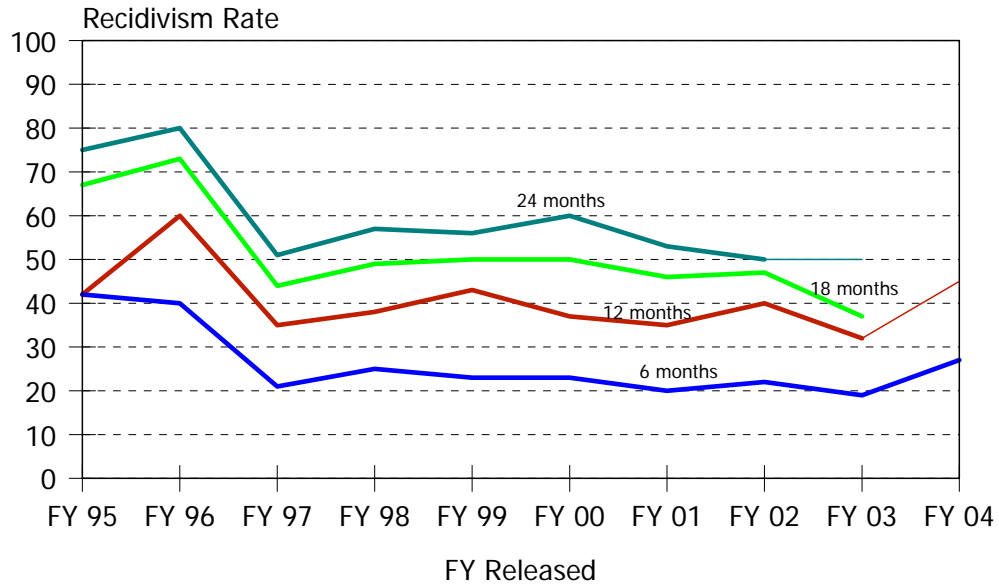
Time Period	N. Released	Months Since Release			
		6 Months	12 Months	18 Months	24 Months
FY 95	26	15%	27%	65%	73%
FY 96	68	31%	51%	65%	72%
FY 97	88	26%	44%	56%	61%
FY 98	159	25%	45%	57%	62%
FY 99	224	29%	48%	55%	62%
FY 00	297	27%	43%	55%	66%
FY 01	308	28%	45%	55%	61%
FY 02	264	29%	49%	59%	65%
FY 03	265	30%	45%	57%	68%
FY 04	297	27%	43%	.	.

Historical Profile of Youth Released by Fiscal Year

Average	Total	Fiscal Year Released										
		95	96	97	98	99	00	01	02	03	04	
NCCDC LOS in months	1.8	2.7	2.6	2.3	2.0	2.0	1.8	1.8	1.7	1.5	1.4	
Placement episode LOS in months	6.6	4.9	10.2	8.9	7.2	7.9	6.7	6.9	5.9	5.6	4.7	
No. prior detention admissions	3.4	2.1	2.6	2.5	2.7	3.0	3.3	3.3	3.4	3.6	4.2	
No. of prior incarceration admissions	2.3	0.7	1.2	1.2	1.9	2.2	2.5	2.6	2.4	2.4	2.6	
Number of prior felony arrests	2.4	3.2	2.8	2.6	2.6	2.9	2.5	2.3	1.8	2.2	2.1	
Number of prior arrests	7.1	8.0	7.8	6.1	6.4	7.2	6.6	6.7	7.1	7.5	7.7	

The New Castle County Detention Center, a DYRS facility, provides health, professional care, professional counseling and educational programming for juveniles. Information presented in this document for this facility relates solely to the adjudicated juveniles held there.

Display 5, Stevenson House Detention Center Adjudicated Felony Recidivism Rates



Time Period	N. Released	Months Since Release			
		6 Months	12 Months	18 Months	24 Months
FY 95	12	42%	42%	67%	75%
FY 96	15	40%	60%	73%	80%
FY 97	43	21%	35%	44%	51%
FY 98	95	25%	38%	49%	57%
FY 99	115	23%	43%	50%	56%
FY 00	144	23%	37%	50%	60%
FY 01	179	20%	35%	46%	53%
FY 02	180	22%	40%	47%	50%
FY 03	156	21%	33%	38%	50%
FY 04	192	27%	45%	.	.

Historical Profile of Youth Released by Fiscal Year

Average	Total	Fiscal Year Released										
		95	96	97	98	99	00	01	02	03	04	
Stevenson House LOS in months	1.6	0.2	0.3	1.0	1.3	1.5	1.8	1.6	2.0	1.6	1.4	
Placement episode LOS in months	7.2	0.2	0.3	4.2	4.7	8.3	8.2	8.6	9.1	6.3	6.2	
No. prior detention admissions	2.0	0.9	0.7	1.4	1.5	1.7	1.8	1.9	2.3	2.0	2.5	
No. of prior incarceration admissions	2.0	0.3	0.1	0.8	1.4	2.1	1.9	2.4	2.4	1.9	2.2	
Number of prior felony arrests	2.0	1.8	0.9	1.6	1.8	2.2	2.1	2.3	2.0	1.9	2.0	
Number of prior arrests	7.0	6.5	5.1	6.7	7.4	7.0	6.7	6.7	6.9	6.9	7.3	

The Stevenson House Detention Center, a DYRS facility, provides health, professional care, professional counseling and educational programming for juveniles. Information presented in this document for this facility relates solely to the adjudicated juveniles held there.

Level V Recidivism Rates

Display 6, Level V Small Program Felony Recidivism Rates

C.C.A., South West Indiana Youth Village,
Drug and Alcohol Felony Recidivism Rates

Time Period	N. Released	Months Since Release			
		6 Months	12 Months	18 Months	24 Months
FY 99	3	100%	100%	100%	100%
FY 01	4	50%	50%	50%	75%
FY 02	1	0%	0%	0%	100%
FY 03	1	100%	100%	100%	100%

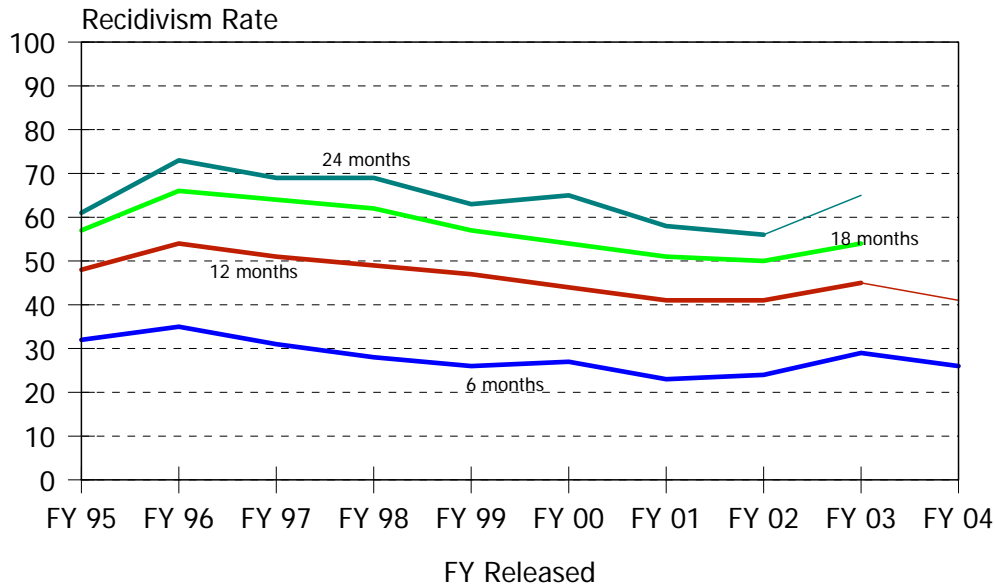
South West Indiana Youth Village provides pre-vocational, educational, strict behavioral modification, and specialized substance abuse programming for offenders 12 to 18 years of age.

C.C.A., South West Indiana Youth Village, Secure Felony Recidivism Rates

Time Period	N. Released	Months Since Release			
		6 Months	12 Months	18 Months	24 Months
FY 00	4	50%	100%	100%	100%
FY 01	4	50%	50%	50%	50%
FY 02	2	50%	50%	50%	50%
FY 03	2	100%	100%	100%	100%

South West Indiana Youth Village provides secure care and substance abuse treatment program for offenders 12 to 18 years of age.

Display 7, Level IV Felony Recidivism Rates



Level IV Felony Recidivism Rates

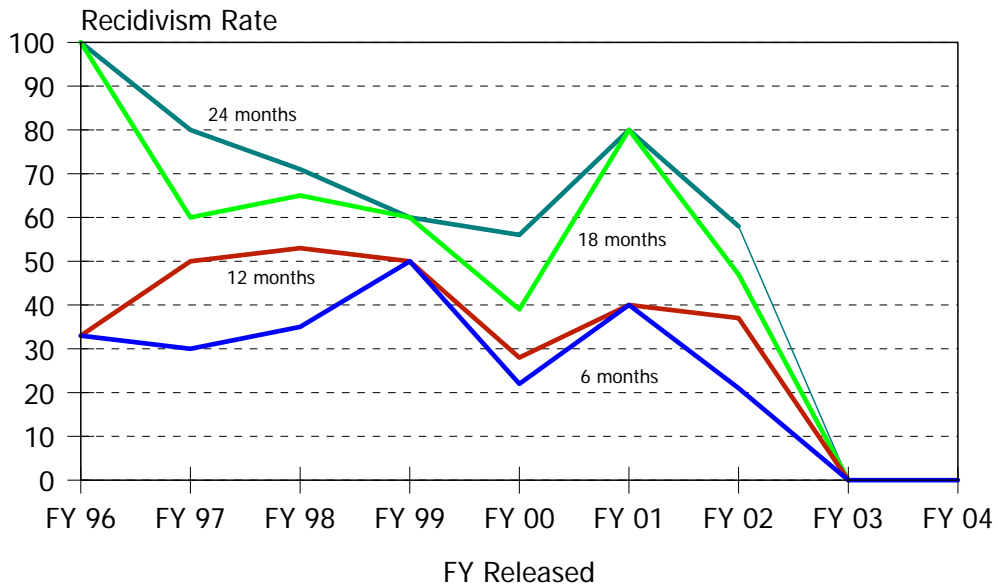
Time Period	N. Released	Months Since Release			
		6 Months	12 Months	18 Months	24 Months
FY 95	155	32%	48%	57%	61%
FY 96	268	35%	54%	66%	73%
FY 97	299	31%	51%	64%	69%
FY 98	495	28%	49%	62%	69%
FY 99	534	26%	47%	57%	63%
FY 00	528	27%	44%	54%	65%
FY 01	518	23%	41%	51%	58%
FY 02	632	24%	41%	50%	56%
FY 03	497	29%	45%	54%	65%
FY 04	390	26%	41%	.	.

Historical Profile of Youth Released by Fiscal Year

Average	Total	Fiscal Year Released										
		95	96	97	98	99	00	01	02	03	04	
Level IV LOS in months	4.3	6.8	7.0	6.7	4.5	4.4	3.8	4.2	3.3	3.2	3.0	
Placement episode LOS in months	5.8	8.6	9.4	8.7	5.9	6.0	5.2	6.0	4.5	4.5	4.3	
No. prior detention admissions	2.7	1.9	2.1	2.3	2.5	2.8	2.8	2.6	2.7	2.9	3.5	
No. of prior incarceration admissions	1.9	1.2	1.4	1.5	1.5	2.1	2.1	2.1	1.9	1.9	2.2	
Number of prior felony arrests	2.2	3.4	3.4	2.8	2.4	2.4	2.1	2.0	1.6	1.9	1.8	
Number of prior arrests	6.8	7.9	8.1	7.1	6.6	6.8	6.2	6.2	6.4	6.8	7.5	

Level IV Recidivism Rates

Display 8, Chamberlain Academy, General, Felony Recidivism Rates



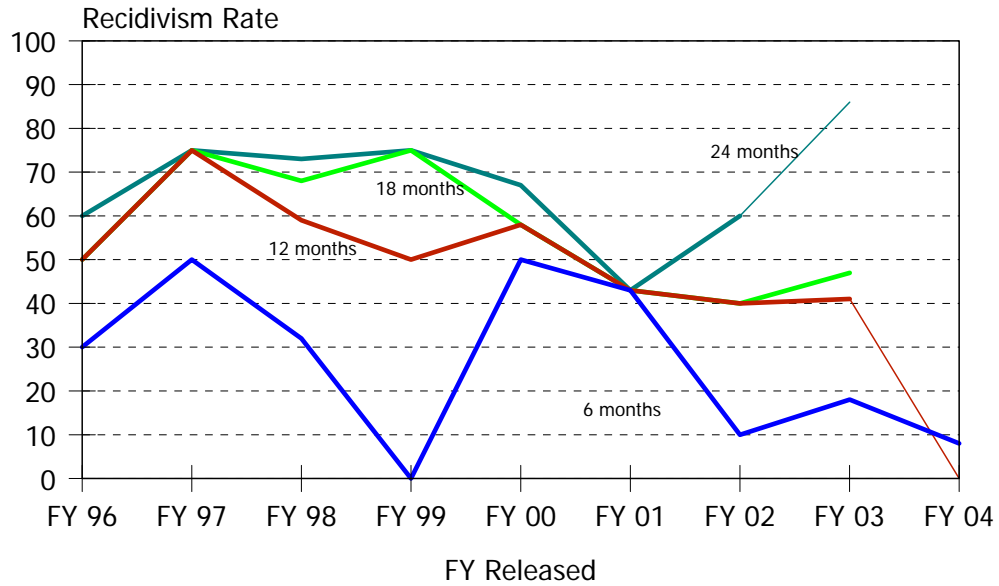
Time Period	N. Released	Months Since Release			
		6 Months	12 Months	18 Months	24 Months
FY 96	3	33%	33%	100%	100%
FY 97	10	30%	50%	60%	80%
FY 98	17	35%	53%	65%	71%
FY 99	10	50%	50%	60%	60%
FY 00	18	22%	28%	39%	56%
FY 01	5	40%	40%	80%	80%
FY 02	19	21%	37%	47%	58%
FY 03	2	0%	0%	0%	0%
FY 04	5	0%	0%	.	.

Historical Profile of Youth Released by Fiscal Year

Average	Total	Fiscal Year Released									
		96	97	98	99	00	01	02	03	04	
Chamberlain Academy LOS in months	7.3	5.7	8.3	8.3	7.5	7.2	6.5	7.0	6.9	4.9	
Placement episode LOS in months	9.9	9.9	11.8	10.4	9.2	8.7	8.2	10.4	7.8	11.2	
Number of prior detention admissions	2.6	3.3	2.7	3.1	2.2	2.0	4.8	2.1	3.0	2.8	
No. of prior incarceration admissions	2.0	1.7	2.5	1.9	0.8	1.4	3.4	2.5	1.5	2.8	
Number of prior felony arrests	2.4	4.7	2.4	3.6	2.7	2.1	1.8	1.8	1.5	1.2	
Number of prior arrests	6.8	8.7	5.9	7.0	6.9	6.3	8.2	6.6	9.0	7.0	

Chamberlain Academy, General, provides longer term coed programming for habitual juvenile offenders.

Display 9, Chamberlain Academy, High Impact, Felony Recidivism Rates



Time Period	N. Released	Months Since Release			
		6 Months	12 Months	18 Months	24 Months
FY 96	10	30%	50%	50%	60%
FY 97	8	50%	75%	75%	75%
FY 98	22	32%	59%	68%	73%
FY 99	4	0%	50%	75%	75%
FY 00	12	50%	58%	58%	67%
FY 01	7	43%	43%	43%	43%
FY 02	10	10%	40%	40%	60%
FY 03	17	18%	41%	47%	86%
FY 04	13	8%	0%	.	.

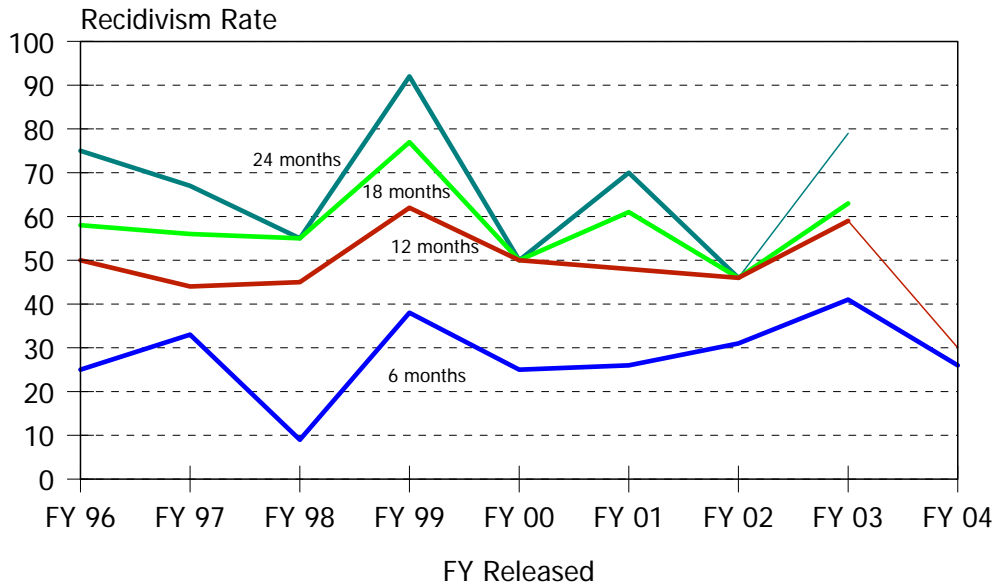
Historical Profile of Youth Released by Fiscal Year

Average	Total	Fiscal Year Released									
		96	97	98	99	00	01	02	03	04	
Chamberlain Academy LOS in months	5.0	4.3	6.3	6.1	6.4	5.1	4.1	4.7	4.1	4.4	
Placement episode LOS in months	7.6	7.7	11.1	7.9	11.9	7.7	6.0	6.6	5.9	7.4	
Number of prior detention admissions	2.5	1.4	2.0	2.8	2.3	2.0	2.4	2.4	3.2	3.3	
No. of prior incarceration admissions	1.8	0.8	3.0	1.3	1.5	0.8	2.1	1.0	2.4	3.1	
Number of prior felony arrests	2.4	2.6	3.3	2.3	2.3	2.0	2.3	2.1	2.1	2.8	
Number of prior arrests	7.5	8.5	11.8	6.1	5.3	5.7	7.4	6.7	8.9	7.7	

Chamberlain Academy's High Impact program provides short-term coed group programming for juveniles with minimal Court involvement and few other post-adjudication placements.

Level IV Recidivism Rates

Display 10, Clarinda Academy Felony Recidivism Rates



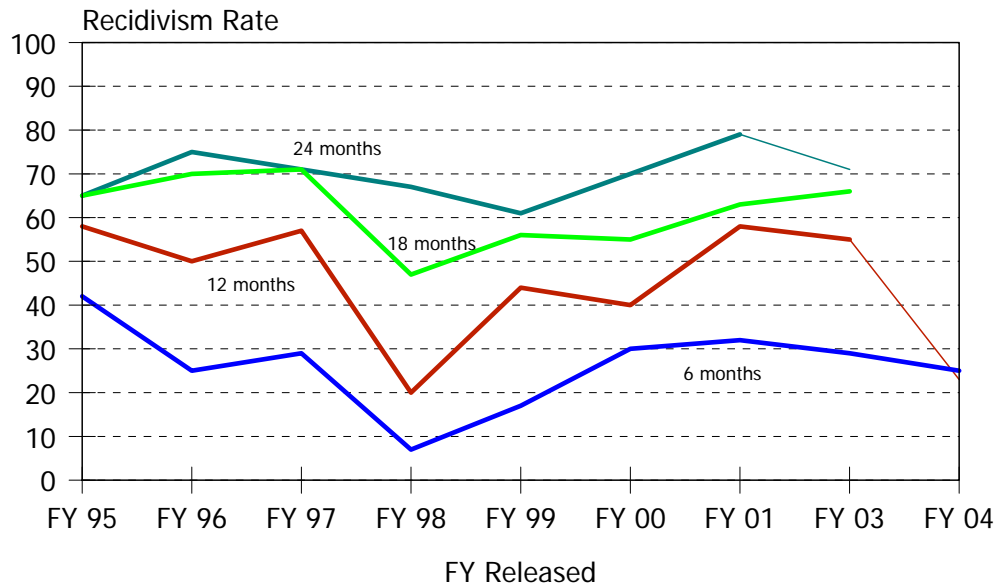
Time Period	N. Released	Months Since Release			
		6 Months	12 Months	18 Months	24 Months
FY 96	12	25%	50%	58%	75%
FY 97	9	33%	44%	56%	67%
FY 98	11	9%	45%	55%	55%
FY 99	13	38%	62%	77%	92%
FY 00	4	25%	50%	50%	50%
FY 01	23	26%	48%	61%	70%
FY 02	13	31%	46%	46%	46%
FY 03	49	41%	59%	63%	79%
FY 04	27	26%	30%	.	.

Historical Profile of Youth Released by Fiscal Year

Average	Total	Fiscal Year Released									
		96	97	98	99	00	01	02	03	04	
Clarinda Academy LOS in months	7.7	10.4	10.6	10.4	10.6	11.3	10.3	8.5	5.1	4.9	
Placement episode LOS in months	10.4	12.8	14.0	12.2	13.7	13.8	12.5	15.9	7.0	6.9	
Number of prior detention admissions	3.3	2.8	2.3	2.2	2.2	1.3	2.6	3.2	4.2	4.0	
No. of prior incarceration admissions	2.4	1.3	3.0	1.9	2.1	0.8	2.4	2.5	2.4	3.3	
Number of prior felony arrests	2.7	4.0	3.3	3.3	3.5	3.0	2.3	2.6	2.4	2.3	
Number of prior arrests	7.8	9.4	7.4	8.1	6.6	5.3	6.7	7.5	8.2	8.4	

Clarinda Academy provides normative culture, chemical abuse counseling, victim awareness and educational programming for males between the ages of 13 and 18.

Display 11, Glen Mills Schools Felony Recidivism Rates



Time Period	N. Released	Months Since Release			
		6 Months	12 Months	18 Months	24 Months
FY 95	26	42%	58%	65%	65%
FY 96	20	25%	50%	70%	75%
FY 97	14	29%	57%	71%	71%
FY 98	15	7%	20%	47%	67%
FY 99	18	17%	44%	56%	61%
FY 00	20	30%	40%	55%	70%
FY 01	19	32%	58%	63%	79%
FY 03	38	29%	55%	66%	71%
FY 04	28	25%	23%	.	.

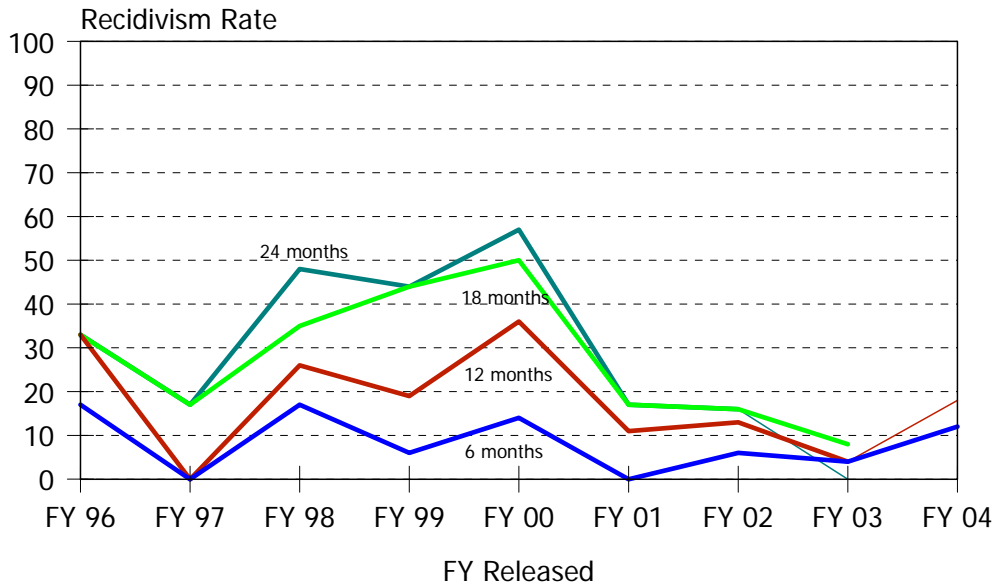
Historical Profile of Youth Released by Fiscal Year

Average	Total	Fiscal Year Released									
		95	96	97	98	99	00	01	03	04	
Glen Mills Schools LOS in months	9.5	12.0	11.1	12.3	12.4	11.8	11.7	10.8	5.6	4.4	
Placement episode LOS in months	11.3	13.2	13.2	14.4	14.6	13.8	13.1	13.6	7.5	5.7	
Number of prior detention admissions	2.7	1.7	1.9	2.2	2.3	2.4	3.6	2.9	3.1	3.9	
No. of prior incarceration admissions	1.8	1.1	1.3	1.2	1.0	1.9	2.0	2.1	2.4	2.6	
Number of prior felony arrests	3.3	3.8	4.1	3.3	2.9	3.9	3.9	3.9	2.6	2.6	
Number of prior arrests	7.6	8.1	8.5	7.7	6.7	6.9	7.5	7.6	7.1	7.8	

Glen Mills Schools provide normative culture, vocational, athletic and educational programming for males between the ages of 14 and 18. No Delaware juvenile offenders were sent to Glen Mills Schools during FY02.

Level IV Recidivism Rates

Display 12, Grace Cottage, Long Term, Felony Recidivism Rates



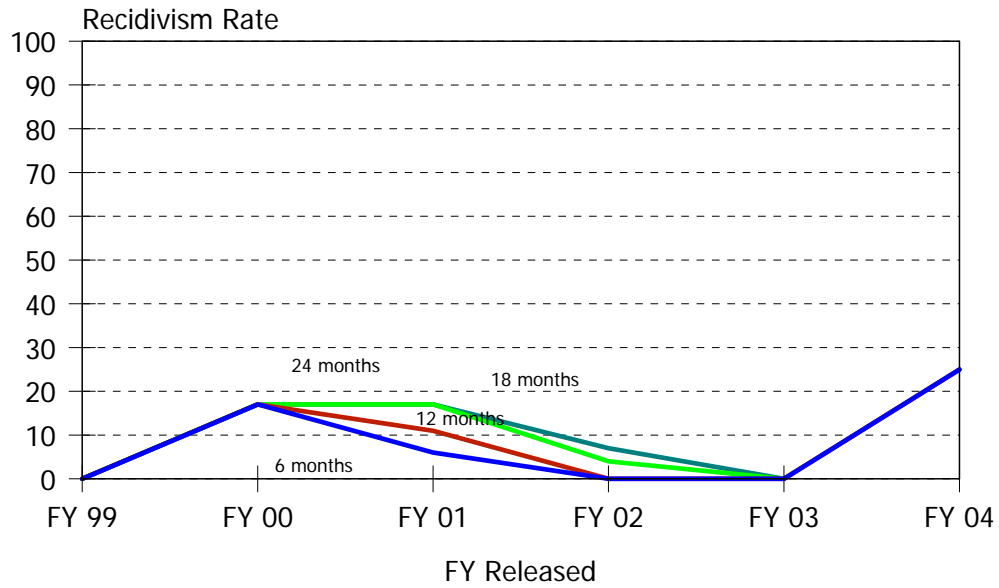
Time Period	N. Released	Months Since Release			
		6 Months	12 Months	18 Months	24 Months
FY 96	6	17%	33%	33%	33%
FY 97	12	0%	0%	17%	17%
FY 98	23	17%	26%	35%	48%
FY 99	16	6%	19%	44%	44%
FY 00	14	14%	36%	50%	57%
FY 01	18	0%	11%	17%	17%
FY 02	32	6%	13%	16%	16%
FY 03	24	4%	4%	8%	0%
FY 04	34	12%	18%	.	.

Historical Profile of Youth Released by Fiscal Year

Average	Total	Fiscal Year Released									
		96	97	98	99	00	01	02	03	04	
Grace Cottage Long LOS in months	4.1	2.7	9.7	6.6	4.6	4.9	5.8	3.0	1.9	2.0	
Placement episode LOS in months	7.1	6.2	11.6	9.0	7.7	8.0	8.0	8.3	5.5	3.2	
Number of prior detention admissions	3.4	3.5	4.4	3.4	5.1	3.4	2.7	3.3	2.9	3.0	
No. of prior incarceration admissions	1.8	1.2	1.0	1.5	2.7	2.1	1.9	2.0	2.2	1.5	
Number of prior felony arrests	1.3	2.0	1.6	1.6	1.3	1.4	1.4	1.2	1.2	1.2	
Number of prior arrests	6.7	7.2	6.6	7.2	7.8	6.3	5.9	6.2	6.8	6.9	

Grace Cottage, Long Term, provided behavior management and educational programming for females between the ages of 13 and 18. Grace Cottage did not operate from December 24, 2003, through January 18, 2005.

Display 13, Grace Cottage, Shelter Services, Felony Recidivism Rates



Time Period	N. Released	Months Since Release			
		6 Months	12 Months	18 Months	24 Months
FY 99	8	0%	0%	0%	0%
FY 00	6	17%	17%	17%	17%
FY 01	18	6%	11%	17%	17%
FY 02	28	0%	0%	4%	7%
FY 03	1	0%	0%	0%	0%
FY 04	4	25%	25%	.	.

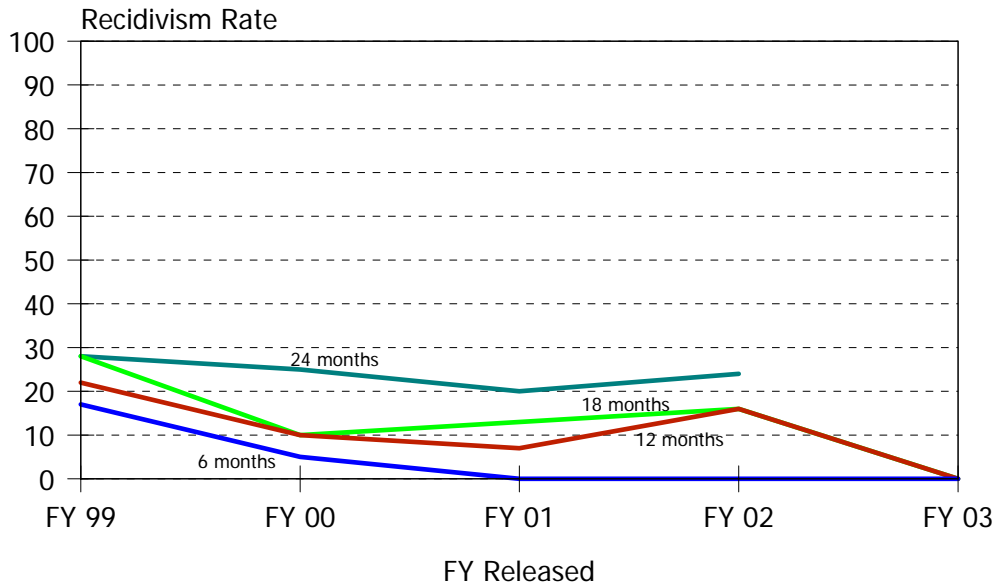
Historical Profile of Youth Released by Fiscal Year

Average	Total	Fiscal Year Released					
		99	00	01	02	03	04
Grace Cottage Shelter LOS in months	0.2	0.2	0.2	1.5	0.9	0.5	3.0
Placement episode LOS in months	0.6	0.2	0.2	3.0	2.3	0.8	4.3
Number of prior detention admissions	2.2	0.2	1.6	2.3	1.7	0.4	4.5
No. of prior incarceration admissions	1.3	0.2	0.2	2.4	1.1	0.5	4.6
Number of prior felony arrests	0.5	0.1	1.2	3.0	1.0	0.0	15.0
Number of prior arrests	4.7	0.1	0.1	1.5	0.5	0.3	7.5

Grace Cottage provided short-term shelter services for females 13 to 18 years of age. Grace Cottage did not operate from December 24, 2003, through January 18, 2005.

Level IV Recidivism Rates

Display 14, Grace Cottage, Short Term, Felony Recidivism Rates



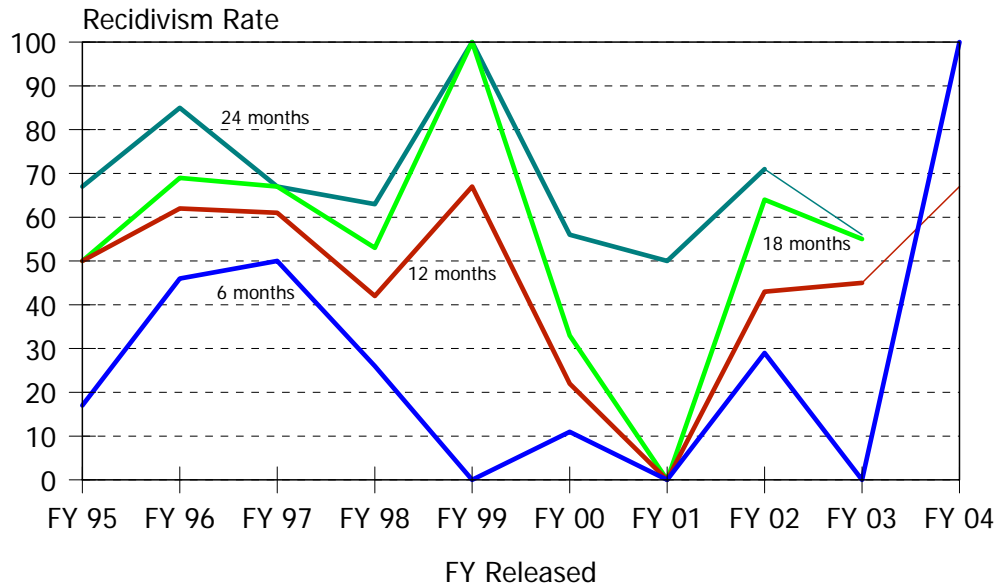
Time Period	N. Released	Months Since Release			
		6 Months	12 Months	18 Months	24 Months
FY 99	18	17%	22%	28%	28%
FY 00	20	5%	10%	10%	25%
FY 01	15	0%	7%	13%	20%
FY 02	25	0%	16%	16%	24%
FY 03	1	0%	0%	0%	.

Historical Profile of Youth Released by Fiscal Year

Average	Total	Fiscal Year Released				
		99	00	01	02	03
Grace Cottage Short Term LOS in months	2.3	2.7	2.6	2.0	2.1	1.5
Placement episode LOS in months	4.3	4.2	4.3	4.0	4.4	7.4
Number of prior detention admissions	3.1	3.4	3.1	2.3	3.4	3.0
No. of prior incarceration admissions	1.6	1.5	1.6	1.8	1.6	1.0
Number of prior felony arrests	0.8	0.8	1.1	0.5	0.6	2.0
Number of prior arrests	5.4	5.1	4.9	4.9	6.4	4.0

Grace Cottage provided short-term residential treatment programming for females between the ages of 13 and 18 with supplemental community based services. Grace Cottage did not operate from December 24, 2003, through January 18, 2005.

Display 15, Mountain Manor Felony Recidivism Rates



Time Period	N. Released	Months Since Release			
		6 Months	12 Months	18 Months	24 Months
FY 95	6	17%	50%	50%	67%
FY 96	13	46%	62%	69%	85%
FY 97	18	50%	61%	67%	67%
FY 98	19	26%	42%	53%	63%
FY 99	3	0%	67%	100%	100%
FY 00	9	11%	22%	33%	56%
FY 01	2	0%	0%	0%	50%
FY 02	14	29%	43%	64%	71%
FY 03	11	0%	45%	55%	56%
FY 04	5	100%	67%	.	.

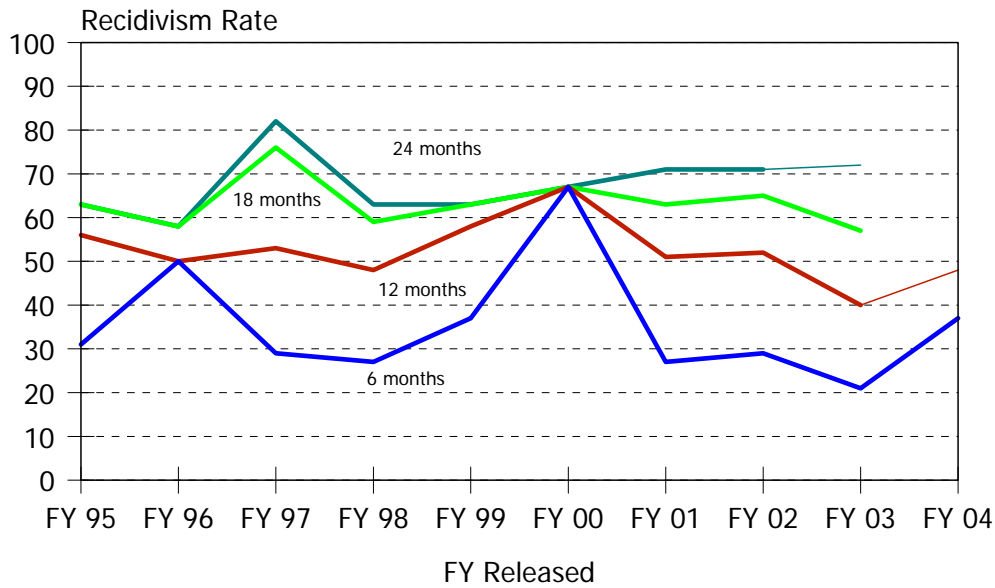
Historical Profile of Youth Released by Fiscal Year

Average	Total	Fiscal Year Released										
		95	96	97	98	99	00	01	02	03	04	
Mountain Manor LOS in months	1.3	1.3	1.3	1.4	1.2	1.2	1.4	2.0	1.6	1.1	1.4	
Placement episode LOS in months	3.4	2.3	3.8	3.4	2.9	9.5	4.0	2.0	3.2	2.3	4.7	
No. prior detention admissions	2.5	2.5	2.3	2.4	2.2	3.0	3.3	2.5	2.8	2.7	1.8	
No. of prior incarceration admissions	1.3	0.5	1.1	1.2	1.0	2.0	1.2	1.0	1.4	2.0	1.6	
Number of prior felony arrests	2.1	3.0	2.8	2.2	1.5	5.3	1.8	2.0	1.6	1.9	1.4	
Number of prior arrests	6.7	9.7	6.6	6.6	6.0	9.7	6.7	7.0	6.1	5.7	7.6	

Mountain Manor Treatment Center, Inc., provides drug and alcohol and family therapy programming for juveniles between the ages of 12 and 19.

Level IV Recidivism Rates

Display 16, Mowlds Cottage Felony Recidivism Rates



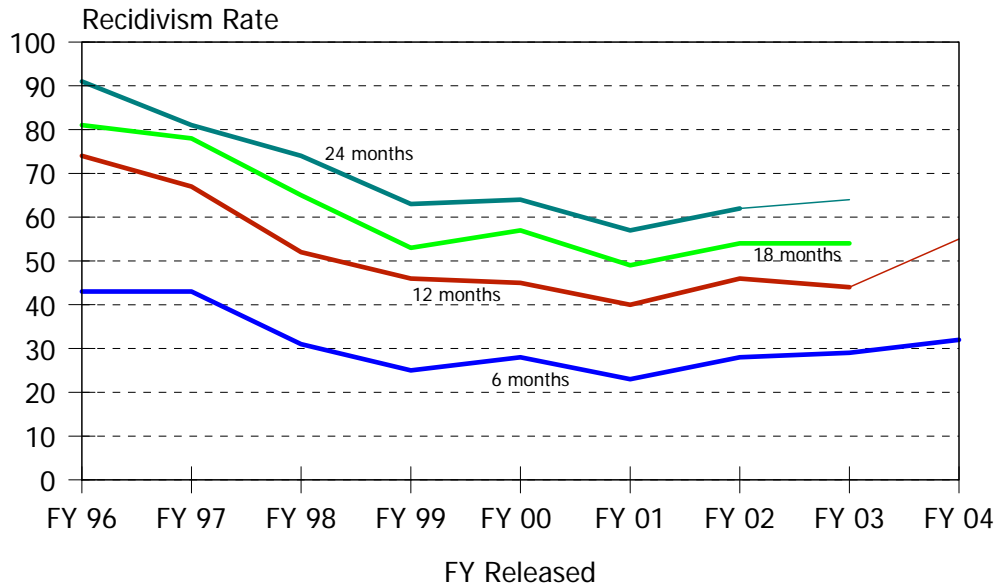
Time Period	N. Released	Months Since Release			
		6 Months	12 Months	18 Months	24 Months
FY 95	16	31%	56%	63%	63%
FY 96	12	50%	50%	58%	58%
FY 97	17	29%	53%	76%	82%
FY 98	56	27%	48%	59%	63%
FY 99	19	37%	58%	63%	63%
FY 00	3	67%	67%	67%	67%
FY 01	41	27%	51%	63%	71%
FY 02	48	29%	52%	65%	71%
FY 03	42	21%	40%	57%	72%
FY 04	38	37%	48%	.	.

Historical Profile of Youth Released by Fiscal Year

Average	Total	Fiscal Year Released										
		95	96	97	98	99	00	01	02	03	04	
Mowlds Cottage LOS in months	0.6	0.2	0.4	0.8	0.7	1.2	1.2	0.7	0.5	0.6	0.4	
Placement episode LOS in months	2.2	0.9	3.2	0.9	2.1	6.0	5.2	3.0	1.0	1.5	2.5	
No. prior detention admissions	2.7	1.4	1.5	1.4	1.8	2.7	5.0	3.3	2.9	3.0	4.2	
No. of prior incarceration admissions	2.2	2.0	2.2	0.5	1.6	2.4	5.7	3.0	1.9	2.1	2.9	
Number of prior felony arrests	2.1	3.6	3.2	2.5	2.2	2.5	3.7	2.2	1.5	1.4	1.6	
Number of prior arrests	6.8	8.3	9.0	6.2	7.0	6.1	10.7	6.6	5.8	6.0	7.8	

While Mowlds Cottage traditionally provides programming for males transitioning from the Ferris School for Boys, since FY02 only youth who were serving administrative holds or were returned from other programs were admitted directly to Mowlds Cottage. Ferris School flow-downs are not included here. Ferris School flow-downs are shown in the Ferris School analysis on page 17.

Display 17, Snowden Cottage Felony Recidivism Rates



Time Period	N. Released	Months Since Release			
		6 Months	12 Months	18 Months	24 Months
FY 96	53	43%	74%	81%	91%
FY 97	72	43%	67%	78%	81%
FY 98	112	31%	52%	65%	74%
FY 99	150	25%	46%	53%	63%
FY 00	143	28%	45%	57%	64%
FY 01	130	23%	40%	49%	57%
FY 02	198	28%	46%	54%	62%
FY 03	138	29%	44%	54%	64%
FY 04	74	32%	55%	.	.

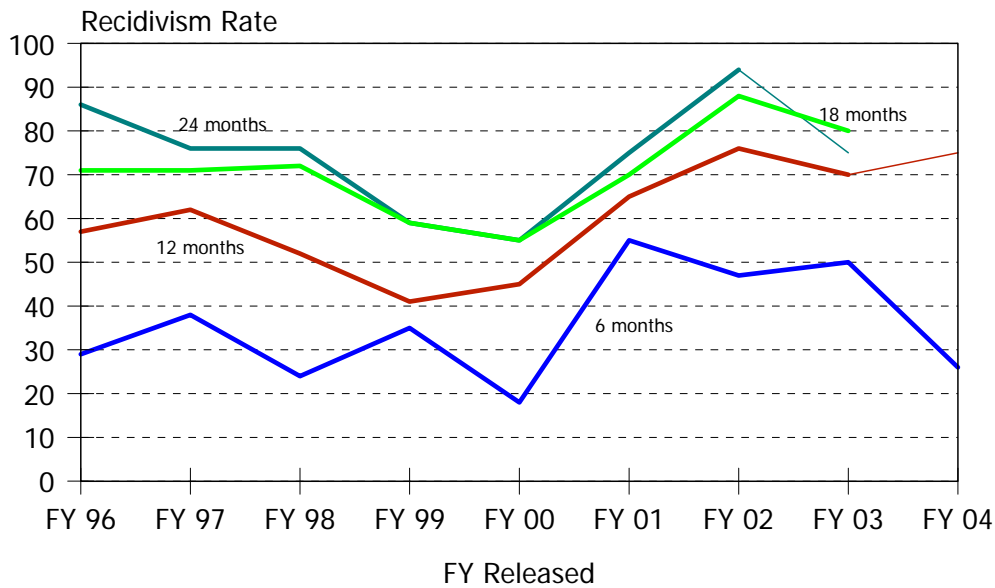
Historical Profile of Youth Released by Fiscal Year

Average	Total	Fiscal Year Released									
		96	97	98	99	00	01	02	03	04	
Snowden Cottage LOS in months	1.3	1.0	2.3	1.5	1.3	1.4	1.5	1.0	1.0	1.2	
Placement episode LOS in months	2.5	2.1	3.5	3.1	2.8	2.9	2.8	1.8	1.6	2.5	
Number of prior detention admissions	2.6	1.9	2.2	2.5	2.6	2.7	2.5	2.5	2.7	3.0	
No. of prior incarceration admissions	1.8	2.4	1.6	1.5	1.7	1.9	1.8	1.7	2.0	1.7	
Number of prior felony arrests	2.1	3.7	2.8	2.5	2.4	1.9	1.9	1.6	1.7	1.7	
Number of prior arrests	6.6	8.4	6.6	6.8	7.0	5.9	5.8	6.4	6.7	7.1	

Snowden Cottage provides a short-term residential programming for males with educational services on-site. Snowden Cottage did not operate from December 24, 2003, through January 18, 2005.

Level IV Recidivism Rates

Display 18, Springfield Academy Felony Recidivism Rates



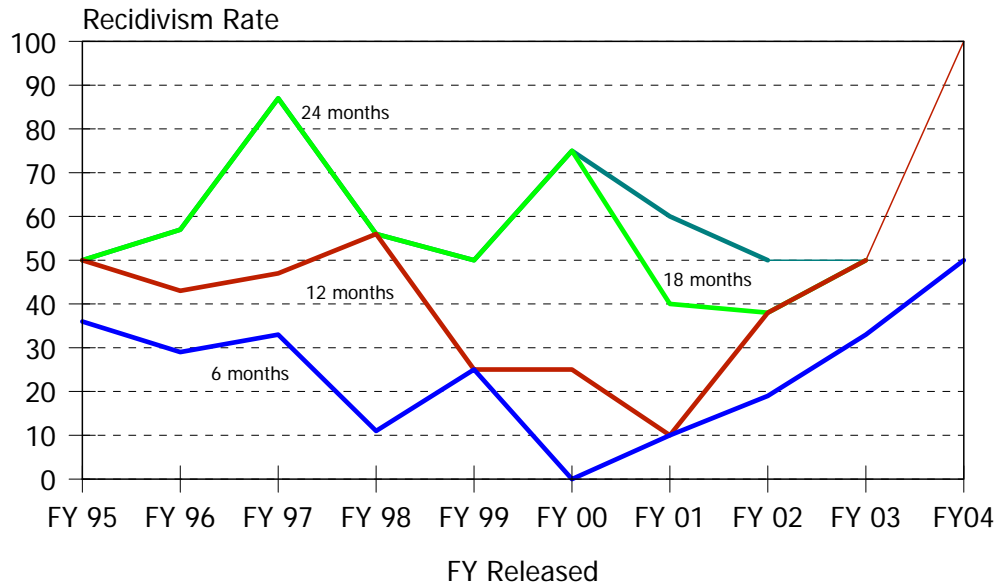
Time Period	N. Released	Months Since Release			
		6 Months	12 Months	18 Months	24 Months
FY 96	7	29%	57%	71%	86%
FY 97	34	38%	62%	71%	76%
FY 98	29	24%	52%	72%	76%
FY 99	17	35%	41%	59%	59%
FY 00	11	18%	45%	55%	55%
FY 01	20	55%	65%	70%	75%
FY 02	17	47%	76%	88%	94%
FY 03	10	50%	70%	80%	75%
FY 04	19	26%	75%	.	.

Historical Profile of Youth Released by Fiscal Year

Average	Total	Fiscal Year Released									
		96	97	98	99	00	01	02	03	04	
Springfield Academy LOS in months	8.3	9.8	9.8	9.0	9.1	8.3	8.4	7.9	5.1	5.0	
Placement episode LOS in months	10.7	13.0	12.4	11.0	11.6	10.0	11.1	10.7	7.4	8.0	
Number of prior detention admissions	3.0	1.6	2.6	2.1	2.4	2.5	2.2	4.5	4.0	5.3	
No. of prior incarceration admissions	2.0	0.9	1.7	1.7	1.6	1.8	1.7	2.9	1.9	3.2	
Number of prior felony arrests	2.9	2.9	3.4	2.7	2.8	2.8	2.9	3.2	2.8	2.4	
Number of prior arrests	7.9	5.3	8.6	7.8	7.2	7.4	6.7	9.0	9.4	8.4	

Springfield Academy provides chemical abuse counseling, victim awareness, educational groups and normative culture programming for males between the ages of 11 and 18.

Display 19, Today Inc., General, Felony Recidivism Rates



Time Period	N. Released	Months Since Release			
		6 Months	12 Months	18 Months	24 Months
FY 95	14	36%	50%	50%	50%
FY 96	14	29%	43%	57%	57%
FY 97	15	33%	47%	87%	87%
FY 98	9	11%	56%	56%	56%
FY 99	4	25%	25%	50%	50%
FY 00	4	0%	25%	75%	75%
FY 01	10	10%	10%	40%	60%
FY 02	16	19%	38%	38%	50%
FY 03	12	33%	50%	50%	50%
FY 04	2	50%	100%	.	.

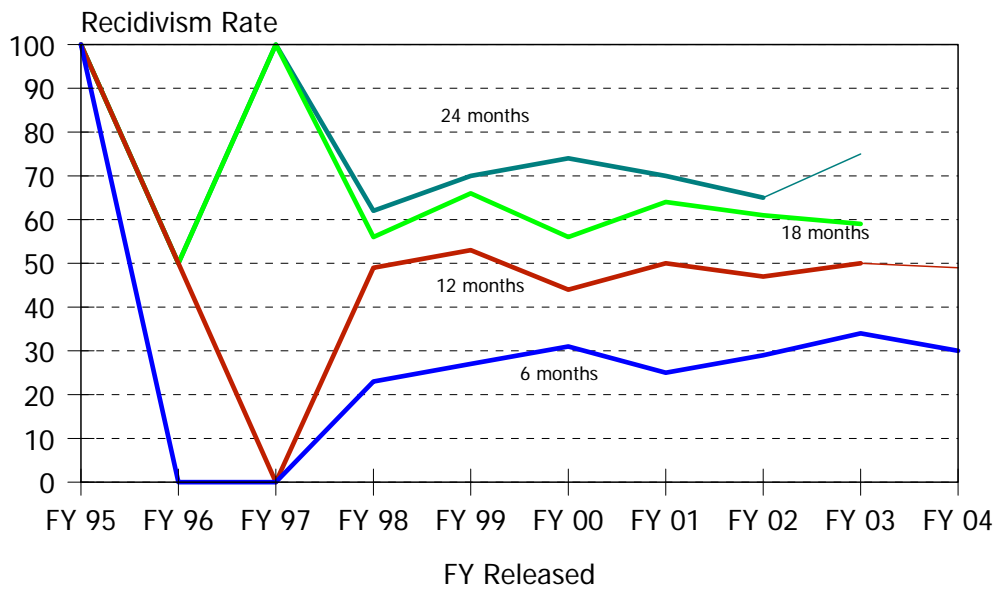
Historical Profile of Youth Released by Fiscal Year

Average	Total	Fiscal Year Released										
		95	96	97	98	99	00	01	02	03	04	
Today, Inc., LOS in months	2.0	2.1	2.3	1.9	1.7	2.1	2.5	2.3	2.1	1.6	2.0	
Placement episode LOS in months	4.0	5.4	3.9	3.9	2.3	3.9	6.1	4.2	4.3	3.1	2.8	
No. prior detention admissions	2.0	1.9	2.2	1.7	2.2	2.0	2.8	1.9	1.6	2.0	4.0	
No. of prior incarceration admissions	1.3	2.4	0.9	1.0	0.4	2.3	1.8	1.4	1.4	1.2	2.0	
Number of prior felony arrests	2.2	3.4	3.5	2.0	1.6	2.0	1.5	2.2	1.4	1.5	2.5	
Number of prior arrests	6.8	8.3	7.8	6.0	7.4	4.8	6.0	6.9	6.4	5.2	11.5	

Today, Inc., provides alcohol and substance abuse treatment for juveniles between the ages of 13 and 19.

Level IV Recidivism Rates

Display 20, VisionQuest, Boot Camp, Felony Recidivism Rates



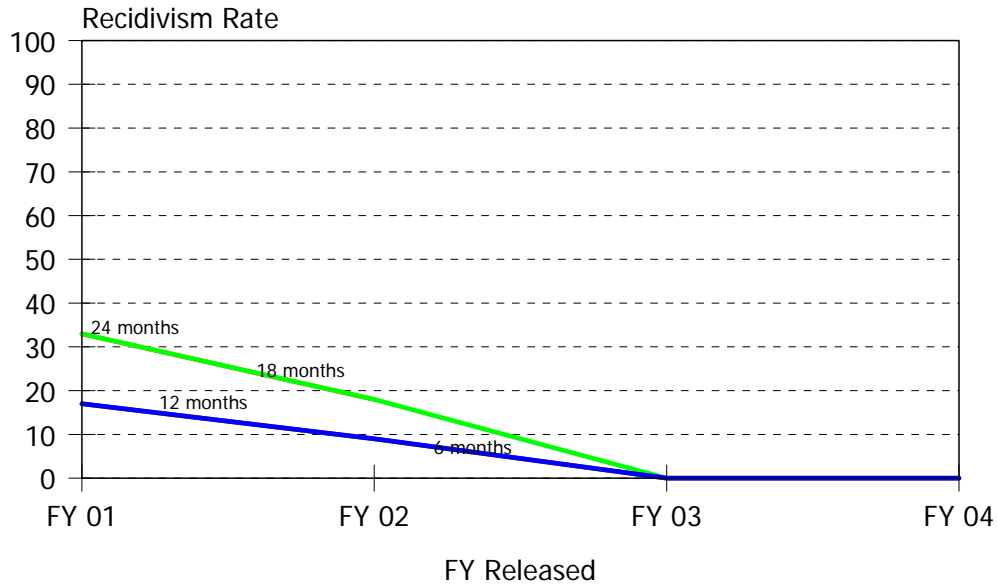
Time Period	N. Released	Months Since Release			
		6 Months	12 Months	18 Months	24 Months
FY 95	1	100%	100%	100%	100%
FY 96	2	0%	50%	50%	50%
FY 97	1	0%	0%	100%	100%
FY 98	39	23%	49%	56%	62%
FY 99	80	27%	53%	66%	70%
FY 00	93	31%	44%	56%	74%
FY 01	100	25%	50%	64%	70%
FY 02	102	29%	47%	61%	65%
FY 03	109	34%	50%	59%	75%
FY 04	105	30%	49%	.	.

Historical Profile of Youth Released by Fiscal Year

Average	Total	Fiscal Year Released										
		95	96	97	98	99	00	01	02	03	04	
VisionQuest Boot Camp LOS in mo.	2.1	3.9	3.4	3.0	2.9	3.0	2.4	2.4	1.8	1.7	1.4	
Placement episode LOS in months	3.7	9.0	3.4	9.0	4.9	5.4	4.1	4.1	3.1	2.9	2.3	
No. prior detention admissions	2.8	2.0	1.5	4.0	2.9	2.8	2.8	2.4	2.8	2.6	3.5	
No. of prior incarceration admissions	1.9	1.0	0.0	5.0	1.9	2.5	2.1	1.8	1.8	1.5	1.8	
Number of prior felony arrests	1.9	2.0	2.0	0.0	2.0	2.3	2.2	2.1	1.8	1.7	1.7	
Number of prior arrests	6.5	8.0	5.5	7.0	6.1	6.6	6.0	6.4	6.4	6.4	7.5	

VisionQuest Boot Camp provides a focus on discipline in addition to education, counseling and community services in a highly structured 30 and 90 day programs for juveniles between the ages of 13 and 18.

Display 21, VisionQuest, Madalyn Program, Felony Recidivism Rates



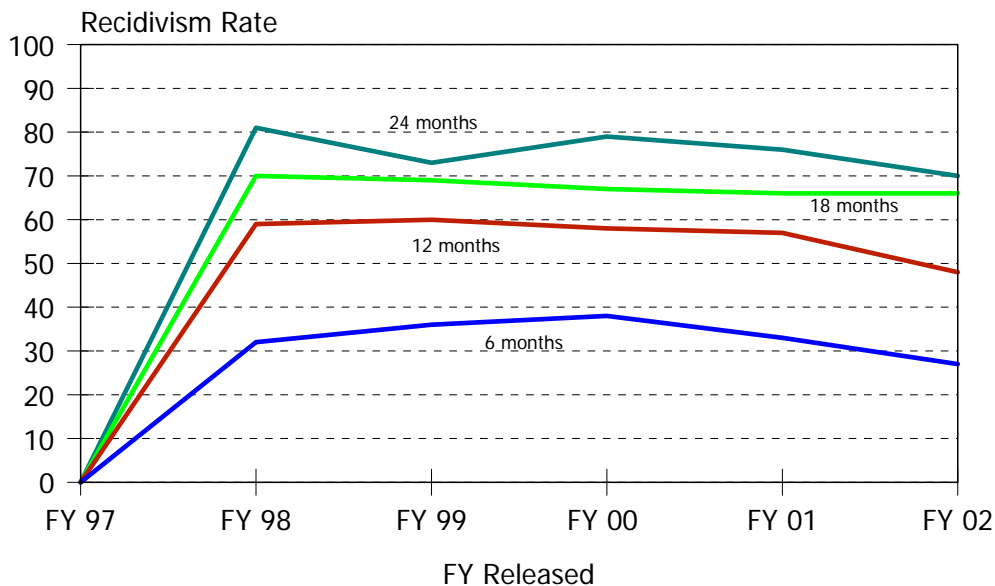
Time Period	N. Released	Months Since Release			
		6 Months	12 Months	18 Months	24 Months
FY 01	12	17%	17%	33%	33%
FY 02	11	9%	9%	18%	18%
FY 03	5	0%	0%	0%	0%
FY 04	3	0%	0%	.	.

Historical Profile of Youth Released by Fiscal Year

Average	Total	Fiscal Year Released			
		01	02	03	04
VisionQuest Madalyn Program LOS in months	3.4	3.3	4.0	3.1	2.0
Placement episode LOS in months	5.8	5.7	6.4	6.0	3.3
Number of prior detention admissions	3.3	3.3	4.1	2.2	2.0
Number of prior incarceration admissions	2.3	1.9	3.0	2.0	2.0
Number of prior felony arrests	1.1	0.7	1.6	0.6	1.7
Number of prior arrests	6.3	5.9	6.7	5.8	7.0

VisionQuest’s Madalyn Program is a residential program designed to address the specific needs of troubled teenage girls.

Display 22, VisionQuest, New Directions Shelter, Felony Recidivism Rates



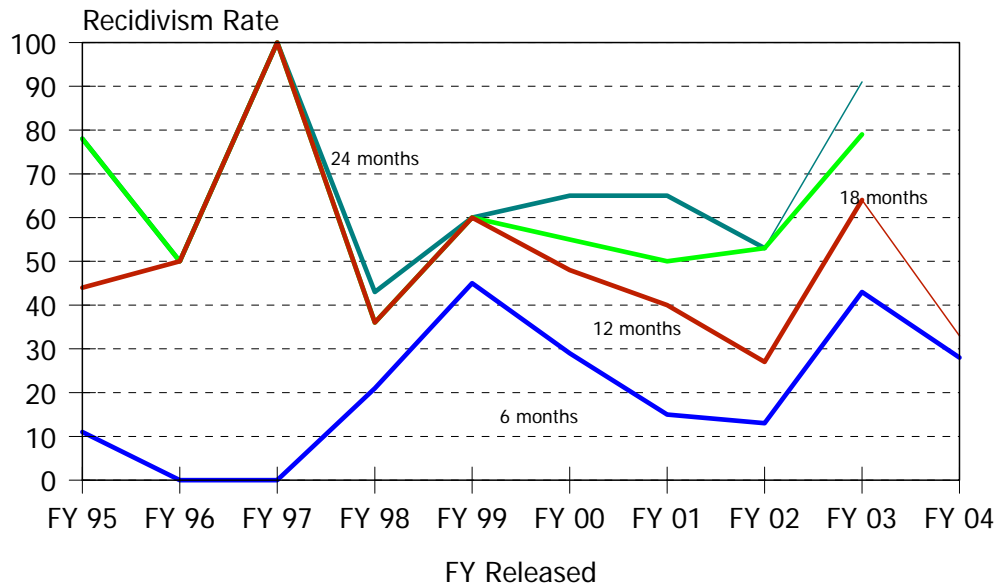
Time Period	N. Released	Months Since Release			
		6 Months	12 Months	18 Months	24 Months
FY 97	1	0%	0%	0%	0%
FY 98	105	32%	59%	70%	81%
FY 99	192	36%	60%	69%	73%
FY 00	161	38%	58%	67%	79%
FY 01	76	33%	57%	66%	76%
FY 02	44	27%	48%	66%	70%

Historical Profile of Youth Released by Fiscal Year

Average	Total	Fiscal Year Released					
		97	98	99	00	01	02
VisionQuest New Directions LOS in months	0.5	0.1	0.4	0.6	0.5	0.4	0.4
Placement episode LOS in months	2.8	0.1	1.9	3.2	2.7	3.0	2.7
Number of prior detention admissions	2.9	3.0	2.8	2.9	3.0	2.8	3.0
No. of prior incarceration admissions	2.7	1.0	1.8	2.6	3.0	2.9	4.0
Number of prior felony arrests	2.3	1.0	2.4	2.4	2.2	2.0	2.1
Number of prior arrests	6.6	6.0	5.9	6.9	6.2	7.2	7.7

VisionQuest’s New Directions Shelter provided educational services and shelter care for juveniles on administrative holds and aftercare revocations, or served as an interim placement for males ages 12 to 18 who were detained or incarcerated in a detention center or the Ferris School for Boys awaiting a secure Level IV residential placement.

Display 23, VisionQuest, Quest, Felony Recidivism Rates



Time Period	N. Released	Months Since Release			
		6 Months	12 Months	18 Months	24 Months
FY 95	9	11%	44%	78%	78%
FY 96	6	0%	50%	50%	50%
FY 97	1	0%	100%	100%	100%
FY 98	14	21%	36%	36%	43%
FY 99	20	45%	60%	60%	60%
FY 00	21	29%	48%	55%	65%
FY 01	20	15%	40%	50%	65%
FY 02	30	13%	27%	53%	53%
FY 03	14	43%	64%	79%	91%
FY 04	18	28%	33%	.	.

Historical Profile of Youth Released by Fiscal Year

Average	Total	Fiscal Year Released									
		95	96	97	98	99	00	01	02	03	04
VisionQuest Quest LOS in months	5.1	10.6	12.9	11.3	5.6	5.8	5.9	4.5	3.5	2.9	1.9
Placement episode LOS in months	8.3	11.7	18.4	14.0	7.3	10.3	9.0	8.5	5.7	8.1	5.2
No. prior detention admissions	3.5	1.9	2.8	3.0	3.1	3.6	3.5	2.9	3.2	4.4	5.4
No. of prior incarceration admissions	2.4	1.2	2.3	1.0	1.7	2.6	3.0	2.2	2.8	2.4	2.7
Number of prior felony arrests	2.1	3.9	4.3	3.0	2.1	2.1	1.3	2.0	1.3	2.8	2.3
Number of prior arrests	7.8	9.0	9.3	10.0	6.5	8.4	7.0	6.6	7.0	9.0	9.2

The VisionQuest's Quest provides an individualized wilderness program designed to meet the needs of juveniles ages 13 to 18 with histories of multiple unsuccessful out-of-home placements.

Level IV Recidivism Rates

Display 24, Level IV Small Program Felony Recidivism Rates

Au Clair School, General, Felony Recidivism Rates

Time Period	N. Released	Months Since Release			
		6 Months	12 Months	18 Months	24 Months
FY 95	1	100%	100%	100%	100%
FY 96	1	100%	100%	100%	100%
FY 97	2	0%	50%	50%	100%
FY 98	8	29%	29%	29%	43%
FY 99	4	50%	50%	75%	100%
FY 00	2	0%	50%	100%	100%
FY 01	4	50%	50%	100%	100%
FY 02	2	0%	50%	50%	50%
FY 03	1	100%	100%	100%	.
FY 04	2	50%	50%	.	.

A description was not available from DYRS for this Department of Education program.

Bowling Brook Preparatory School Felony Recidivism Rates

Time Period	N. Released	Months Since Release			
		6 Months	12 Months	18 Months	24 Months
FY 95	5	0%	20%	40%	40%
FY 96	9	11%	11%	44%	67%
FY 97	2	50%	100%	100%	100%
FY 98	4	50%	75%	75%	75%
FY 99	10	0%	60%	70%	80%
FY 00	6	17%	33%	50%	83%
FY 01	3	33%	67%	67%	67%
FY 02	3	0%	67%	67%	67%
FY 03	1	0%	100%	100%	.
FY 04	2	0%	0%	.	.

Bowling Brook provides normative culture, substance abuse group and educational programming for males between the ages of 16 and 19.

The Bridge, Long Term, Felony Recidivism Rates

Time Period	N. Released	Months Since Release			
		6 Months	12 Months	18 Months	24 Months
FY 95	4	0%	0%	50%	50%
FY 96	5	0%	20%	20%	20%
FY 97	1	100%	100%	100%	100%
FY 98	2	100%	100%	100%	100%
FY 99	6	0%	17%	17%	33%
FY 00	3	0%	33%	33%	33%
FY 01	3	33%	33%	67%	67%
FY 02	2	0%	50%	50%	50%

The Bridge, Long Term, provides alcohol and substance abuse treatment for juveniles between the ages of 14 and 19.

Brown Schools at Laurel Ridge Felony Recidivism Rates

Time Period	N. Released	Months Since Release			
		6 Months	12 Months	18 Months	24 Months
FY 00	1	0%	0%	0%	0%
FY 01	1	0%	0%	0%	100%
FY 02	2	0%	0%	0%	0%

A description was not available from DYRS for this program.

Diversified Treatment Alternatives Felony Recidivism Rates

Time Period	N. Released	Months Since Release			
		6 Months	12 Months	18 Months	24 Months
FY 97	2	0%	0%	0%	0%
FY 98	2	0%	0%	0%	50%
FY 99	5	0%	20%	20%	20%
FY 00	4	0%	0%	0%	25%
FY 01	3	0%	33%	33%	33%
FY 02	5	20%	40%	40%	40%
FY 03	2	0%	0%	0%	0%
FY 04	1	100%	100%	.	.

Diversified Treatment Alternatives provides specialized sexuality therapy groups, education/therapy groups, and a comprehensive intervention strategy to manage the behavior of male sex offenders 8 to 17 years of age.

Excelsior Youth Center Felony Recidivism Rates

Time Period	N. Released	Months Since Release			
		6 Months	12 Months	18 Months	24 Months
FY 95	5	0%	0%	20%	40%
FY 96	6	17%	17%	33%	50%
FY 97	3	0%	33%	33%	33%
FY 98	4	0%	25%	25%	25%
FY 99	2	0%	50%	50%	50%
FY 00	7	0%	0%	0%	14%
FY 01	8	0%	0%	0%	0%
FY 02	10	10%	20%	20%	20%
FY 03	3	0%	0%	33%	67%

Excelsior Youth Center provides programming for females ages 12 to 18 years of age who are emotionally and behaviorally disturbed. The individualized treatment includes individual psychotherapy, group psychotherapy, family counseling, and peer group interaction.

Level IV Recidivism Rates

George Junior Republic, General, Felony Recidivism Rates

Time Period	N. Released	Months Since Release			
		6 Months	12 Months	18 Months	24 Months
FY 95	2	50%	100%	100%	100%
FY 96	8	88%	100%	100%	100%
FY 97	2	50%	50%	100%	100%
FY 99	9	33%	44%	44%	56%
FY 00	4	0%	25%	75%	75%
FY 01	7	57%	71%	100%	100%
FY 02	8	75%	88%	100%	100%

George Junior Republic, General, provides a general treatment program for juveniles with step-down Level III Group Home availability.

George Junior Republic, Special, Felony Recidivism Rates

Time Period	N. Released	Months Since Release			
		6 Months	12 Months	18 Months	24 Months
FY 96	4	75%	75%	100%	100%
FY 99	7	14%	29%	29%	43%
FY 00	3	0%	33%	67%	67%
FY 01	5	60%	60%	80%	80%
FY 02	3	100%	100%	100%	100%
FY 04	1	0%	0%	.	.

A description was not available from DYRS for this program.

Hennepin County Home School Felony Recidivism Rates

Time Period	N. Released	Months Since Release			
		6 Months	12 Months	18 Months	24 Months
FY 95	2	0%	0%	0%	0%
FY 96	2	0%	0%	50%	50%
FY 97	6	0%	17%	17%	17%
FY 98	1	0%	0%	0%	0%
FY 99	5	0%	40%	40%	60%
FY 00	4	25%	50%	50%	50%
FY 01	7	0%	0%	0%	29%
FY 02	3	0%	0%	0%	0%
FY 03	4	0%	0%	0%	0%
FY 04	1	0%	0%	.	.

Hennepin County Home School provides comprehensive treatment for male sex offenders 14 to 18 years of age in a juvenile corrections facility.

KidsPeace, Diagnostic Program, Felony Recidivism Rates

Time Period	N. Released	Months Since Release			
		6 Months	12 Months	18 Months	24 Months
FY 95	1	0%	0%	0%	0%
FY 96	1	100%	100%	100%	100%
FY 98	1	0%	0%	100%	100%
FY 99	2	0%	0%	0%	50%
FY 01	3	0%	0%	0%	0%
FY 02	2	0%	50%	50%	50%

KidsPeace's Diagnostic Program provides short-term treatment services combined with a comprehensive diagnostic evaluation for juveniles 6 to 18 years of age.

KidsPeace, General, Felony Recidivism Rates

Time Period	N. Released	Months Since Release			
		6 Months	12 Months	18 Months	24 Months
FY 95	5	80%	80%	100%	100%
FY 96	7	14%	14%	43%	57%
FY 97	4	0%	0%	0%	25%
FY 98	6	0%	50%	67%	67%
FY 02	1	0%	100%	100%	100%
FY 03	1	0%	0%	0%	.

KidsPeace's General program provides 24-hour psychiatric care for juveniles 6 to 18 years of age that require longer-term supervision, residential, clinical, and educational services.

KidsPeace, Intensive, Felony Recidivism Rates

Time Period	N. Released	Months Since Release			
		6 Months	12 Months	18 Months	24 Months
FY 95	1	0%	100%	100%	100%
FY 96	1	0%	0%	0%	0%
FY 97	6	0%	0%	17%	17%
FY 98	2	0%	0%	50%	50%
FY 99	1	0%	0%	0%	0%
FY 01	1	0%	0%	0%	0%
FY 02	1	0%	0%	0%	0%

KidsPeace's Intensive program provides highly individualized, staff-secure, 24-hour psychiatric care for offenders 6 to 18 years of age requiring intensive clinical, recreational and educational services.

Ministry of Caring, House of Joseph II, Felony Recidivism Rates

Time Period	N. Released	Months Since Release			
		6 Months	12 Months	18 Months	24 Months
FY 04	7	14%	33%	.	.

The Ministry of Caring's House of Joseph II provides a transitional residence for males between the ages of 16 and 18 years of age who are transitioning out of the Ferris School for Boys.

Level IV Recidivism Rates

New Hope Treatment Centers, New Choices Program Felony Recidivism Rates

Time Period	N. Released	Months Since Release			
		6 Months	12 Months	18 Months	24 Months
FY 01	1	0%	0%	0%	0%
FY 02	2	100%	100%	100%	100%

New Hope Treatment Center’s New Choices program is a residential program for males with mental retardation and/or developmental disabilities who had significant emotional and/or behavioral issues that may include sexually inappropriate behavior as a secondary problem.

New Hope Treatment Centers, New Horizon Program Felony Recidivism Rates

Time Period	N. Released	Months Since Release			
		6 Months	12 Months	18 Months	24 Months
FY 00	1	0%	0%	0%	0%
FY 02	1	0%	0%	0%	0%

New Hope Treatment Center’s New Horizon program (formerly the Synergy program) provides long-term daily psychiatric treatment to females 12 to 17.6 years of age.

New Hope Treatment Centers, Palmetto Point Program Felony Recidivism Rates

Time Period	N. Released	Months Since Release			
		6 Months	12 Months	18 Months	24 Months
FY 02	2	0%	0%	0%	0%
FY 03	1	0%	0%	0%	.

New Hope Treatment Center’s Palmetto Point program provides long-term daily psychiatric treatment female sex offenders 12 to 17.6 years of age.

New Hope Treatment Centers, Starting Pointe Program Felony Recidivism Rates

Time Period	N. Released	Months Since Release			
		6 Months	12 Months	18 Months	24 Months
FY 02	2	0%	0%	0%	0%
FY 03	3	0%	33%	33%	50%
FY 04	5	20%	0%	.	.

New Hope Treatment Center’s New Horizon program (formerly the Synergy program) provides a highly structured milieu specifically designed to monitor and redirect sexually inappropriate behavior, along with a comprehensive array of clinical, educational and recreational services

New Hope Treatment Centers, Triad Program Felony Recidivism Rates

Time Period	N. Released	Months Since Release			
		6 Months	12 Months	18 Months	24 Months
FY 00	6	0%	33%	33%	33%
FY 01	2	0%	50%	50%	50%
FY 02	4	0%	0%	25%	25%
FY 03	4	25%	25%	50%	.

New Hope’s Triad Program provides an intensive and comprehensive residential treatment for male sex offenders 13 to 21 years of age with IQs ranging from 45 to 75.

New Hope Treatment Centers, Way Point Program Felony Recidivism Rates

Time Period	N. Released	Months Since Release			
		6 Months	12 Months	18 Months	24 Months
FY 00	1	0%	0%	0%	0%
FY 01	4	0%	0%	0%	0%
FY 02	4	0%	25%	25%	25%
FY 03	4	50%	50%	50%	50%
FY 04	2	0%	0%	.	.

New Hope Treatment Centers’ Way Point program provides treatment for sexually aggressive behavior to moderate to high-risk adolescent males 12 to 17.6 years of age.

The Pines, Behavioral Studies Program, Felony Recidivism Rates

Time Period	N. Released	Months Since Release			
		6 Months	12 Months	18 Months	24 Months
FY 97	1	0%	0%	0%	0%
FY 99	2	0%	0%	0%	0%
FY 00	3	0%	33%	33%	33%
FY 01	3	0%	0%	33%	33%
FY 02	8	0%	13%	13%	13%
FY 03	2	0%	50%	50%	100%
FY 04	2	0%	.	.	.

The Pines’ Behavioral Studies Program provides treatment for sex offenders, ages 10 to 18, in a highly structured residential environment.

The Pines, The Cooperative Program, Felony Recidivism Rates

Time Period	N. Released	Months Since Release			
		6 Months	12 Months	18 Months	24 Months
FY 00	2	0%	0%	0%	0%
FY 03	1	100%	100%	100%	.

The Pines’ Cooperative Program provides treatment for juveniles with severe emotional and behavioral problems and significant developmental disabilities.

Level IV Recidivism Rates

The Pines, The Cottage/Right Track Program, Felony Recidivism Rates

Time Period	N. Released	Months Since Release			
		6 Months	12 Months	18 Months	24 Months
FY 01	2	0%	0%	50%	50%
FY 02	1	0%	0%	0%	0%
FY 03	1	0%	0%	0%	0%

The Pines' Cottage/Right Track Program provides services to psycho-sexually disturbed males 10 to 17 years of age with full scale IQs between 50 and 60.

The Pines, General, Felony Recidivism Rates

Time Period	N. Released	Months Since Release			
		6 Months	12 Months	18 Months	24 Months
FY 95	2	0%	0%	50%	100%
FY 96	2	50%	50%	50%	50%
FY 97	10	40%	50%	50%	50%
FY 98	9	33%	44%	44%	56%
FY 99	10	0%	10%	30%	30%
FY 00	7	14%	43%	57%	57%
FY 01	3	0%	33%	33%	33%
FY 03	2	0%	0%	0%	.
FY 04	1	0%	0%	.	.

The Pines provides special education in a therapeutic residential setting to juveniles with a DSM-IV psychiatric diagnosis between the ages of 10 and 17 years upon admission.

The Pines, The Phoenix Program Felony Recidivism Rates

Time Period	N. Released	Months Since Release			
		6 Months	12 Months	18 Months	24 Months
FY 00	4	0%	0%	50%	50%
FY 01	3	0%	33%	67%	67%
FY 02	5	20%	40%	40%	60%
FY 03	3	33%	33%	33%	0%
FY 04	1	0%	0%	.	.

The Pines' The Phoenix Program provides treatment for aggressive mentally ill males 12 to 18 years of age who are having mental health problems coupled with major behavior problems.

The Pines, Young Men/Young Women's Center Felony Recidivism Rates

Time Period	N. Released	Months Since Release			
		6 Months	12 Months	18 Months	24 Months
FY 00	1	0%	0%	0%	0%
FY 02	2	50%	50%	50%	50%
FY 03	1	0%	100%	100%	100%

The Pines' Young Men and Young Women's Centers provide treatment for juveniles who have been diagnosed with psychiatric and behavioral problems.

Riverside Treatment Services, Inc., Felony Recidivism Rates

Time Period	N. Released	Months Since Release			
		6 Months	12 Months	18 Months	24 Months
FY 02	2	50%	50%	50%	50%
FY 03	1	0%	0%	0%	0%

Residential Treatment Services, Inc. provides residential mental health services and acute psychiatric hospital services for juveniles that are dually diagnosed and/or are resistant to treatment.

Today Inc., New Dawn, Felony Recidivism Rates

Time Period	N. Released	Months Since Release			
		6 Months	12 Months	18 Months	24 Months
FY 03	3	33%	33%	33%	0%
FY 04	2	0%	.	.	.

Today Inc.'s New Dawn program provides adjudicated juveniles, between the ages of 13 to 18, with a short history of alcohol or marijuana dependence short-term (30 day) drug and alcohol treatment.

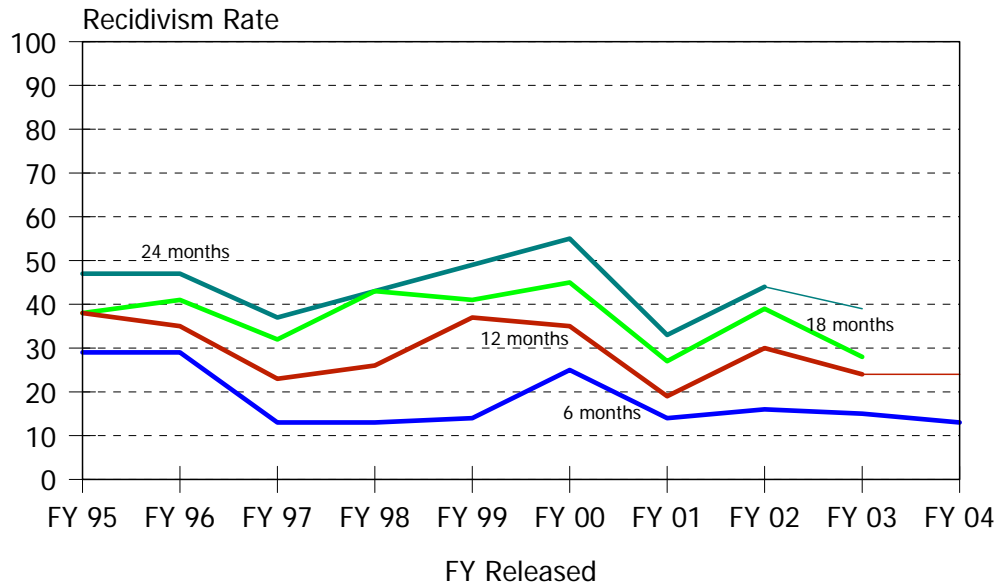
VisionQuest, Lady of The Lakes, Felony Recidivism Rates

Time Period	N. Released	Months Since Release			
		6 Months	12 Months	18 Months	24 Months
FY 03	1	0%	0%	0%	0%

VisionQuest's Lady of the Lakes provides residential programming for pregnant offenders and teen mothers with one child, up to 2 years of age.

Intentionally Blank

Display 25, Level III Residential Felony Recidivism Rates



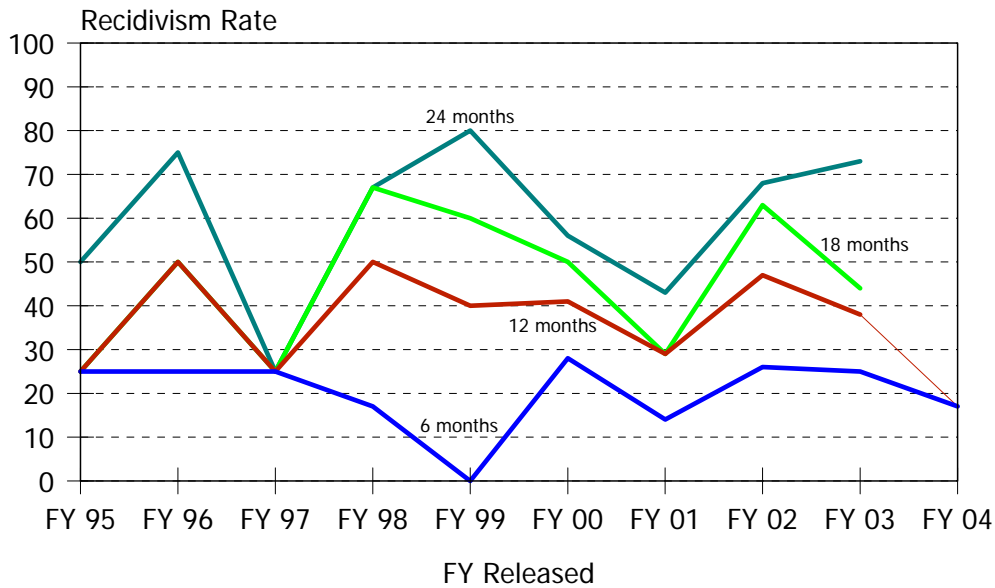
Time Period	N. Released	Months Since Release			
		6 Months	12 Months	18 Months	24 Months
FY 95	34	29%	38%	38%	47%
FY 96	49	29%	35%	41%	47%
FY 97	62	13%	23%	32%	37%
FY 98	47	13%	26%	43%	43%
FY 99	49	14%	37%	41%	49%
FY 00	55	25%	35%	45%	55%
FY 01	126	14%	19%	27%	33%
FY 02	131	16%	30%	39%	44%
FY 03	165	15%	24%	28%	39%
FY 04	144	13%	24%	.	.

Historical Profile of Youth Released by Fiscal Year

Average	Total	Fiscal Year Released									
		95	96	97	98	99	00	01	02	03	04
Level III LOS in months	3.1	9.6	5.9	8.0	8.2	7.7	6.5	1.3	1.0	0.5	0.5
Placement episode LOS in months	5.3	10.7	9.0	10.7	14.4	13.0	11.7	3.1	2.8	1.3	1.3
No. prior detention admissions	2.1	2.3	2.0	2.3	3.0	2.8	3.1	1.8	1.7	1.7	2.2
No. of prior incarceration admissions	0.8	0.4	0.8	0.6	1.3	1.9	2.0	0.5	0.6	0.6	0.6
Number of prior felony arrests	1.2	2.2	2.7	1.3	2.0	1.8	2.1	0.8	0.9	0.8	0.9
Number of prior arrests	5.2	7.2	7.7	6.1	7.1	6.8	6.2	3.8	4.1	4.7	4.7

Level III Recidivism Rates

Display 26, Camelot, General, Felony Recidivism Rates



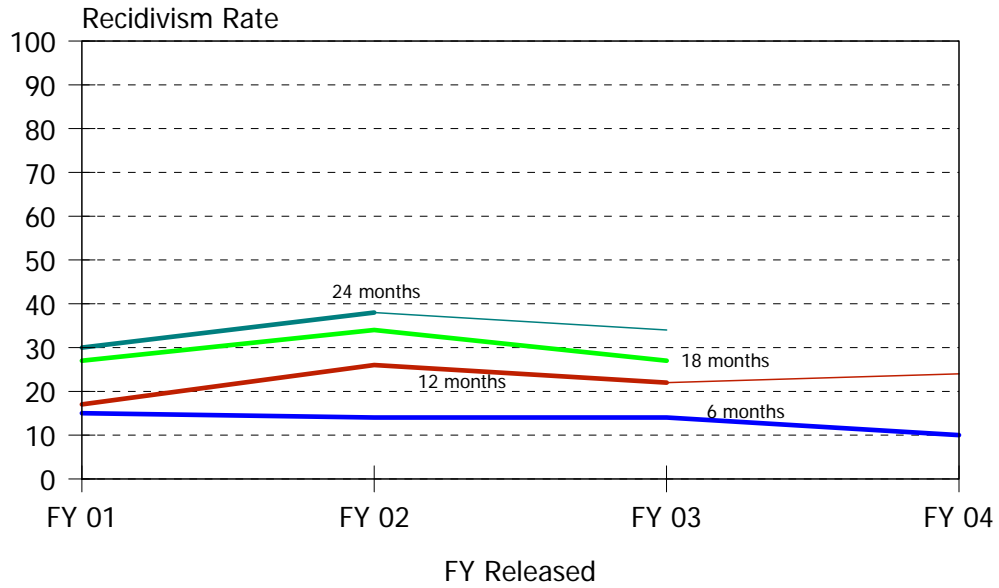
Time Period	N. Released	Months Since Release			
		6 Months	12 Months	18 Months	24 Months
FY 95	4	25%	25%	25%	50%
FY 96	4	25%	50%	50%	75%
FY 97	4	25%	25%	25%	25%
FY 98	6	17%	50%	67%	67%
FY 99	5	0%	40%	60%	80%
FY 00	18	28%	41%	50%	56%
FY 01	14	14%	29%	29%	43%
FY 02	19	26%	47%	63%	68%
FY 03	16	25%	38%	44%	73%
FY 04	35	17%	17%	.	.

Historical Profile of Youth Released by Fiscal Year

Average	Total	Fiscal Year Released										
		95	96	97	98	99	00	01	02	03	04	
Camelot LOS in months	1.4	5.2	3.2	2.6	2.2	3.6	1.9	1.6	1.2	0.5	0.5	
Placement episode LOS in months	6.8	5.2	10.7	6.2	10.8	14.2	8.3	13.8	10.5	1.9	1.8	
No. prior detention admissions	2.6	1.8	1.8	1.8	3.7	1.6	3.3	2.4	2.4	2.3	2.9	
No. of prior incarceration admissions	1.5	0.3	0.8	1.5	1.7	1.2	2.0	2.1	1.7	1.3	1.0	
Number of prior felony arrests	1.4	1.5	1.0	2.3	3.0	1.2	1.7	1.4	2.0	0.9	1.1	
Number of prior arrests	5.9	5.3	6.0	6.0	8.2	4.0	6.4	4.4	5.6	5.9	6.2	

Camelot, General, provides residential group care for pre-adjudicated males between the ages of 12 and 18.

Display 27, People’s Place II Felony Recidivism Rates



Time Period	N. Released	Months Since Release			
		6 Months	12 Months	18 Months	24 Months
FY 01	105	15%	17%	27%	30%
FY 02	109	14%	26%	34%	38%
FY 03	149	14%	22%	27%	34%
FY 04	108	10%	24%	.	.

Historical Profile of Youth Released by Fiscal Year

Average	Fiscal Year Released				
	Total	01	02	03	04
People’s Place II LOS in months	0.5	0.5	0.5	0.5	0.5
Placement episode LOS in months	1.1	1.1	1.2	1.1	1.1
Number of prior detention admissions	1.6	1.6	1.4	1.6	1.9
Number of prior incarceration admissions	0.4	0.2	0.4	0.5	0.5
Number of prior felony arrests	0.7	0.6	0.7	0.8	0.8
Number of prior arrests	4.0	3.5	3.8	4.4	4.2

People’s Place II operates a supervised group home as an alternative to secure detention.

Level III Recidivism Rates

Display 28, Level III Small Program Felony Recidivism Rates

Child, Inc., General, Felony Recidivism Rates

Time Period	N. Released	Months Since Release			
		6 Months	12 Months	18 Months	24 Months
FY 95	22	27%	36%	36%	45%
FY 96	27	22%	22%	33%	41%
FY 97	35	17%	29%	37%	46%
FY 98	24	8%	17%	38%	38%
FY 99	23	22%	35%	39%	48%
FY 00	29	28%	31%	45%	55%
FY 01	5	0%	20%	20%	40%
FY 02	2	0%	50%	50%	50%.

Child, Inc., General, provides foster care for adjudicated juveniles between the ages of 8 and 18.

YMCA, Weekly, Felony Recidivism Rates

Time Period	N. Released	Months Since Release			
		6 Months	12 Months	18 Months	24 Months
FY 96	2	50%	50%	50%	50%
FY 97	1	0%	0%	100%	100%
FY 99	1	100%	100%	100%	100%
FY 00	5	0%	40%	40%	40%
FY 01	1	0%	0%	0%	100%
FY 02	2	50%	50%	50%	50%

YMCA's Weekly program provides emergency housing – with no additional services – for adjudicated males 18 years of age who are in need of immediate and temporary housing.

Data Sources

Criminal Justice Information System Data

Arrest data was downloaded from the Criminal Justice Information System (CJIS) on January 9, 2005, for use in this study. Before the arrest data could be analyzed, extensive cleanup and charge selection was required according to the following protocol:

- a. Complete criminal history information was downloaded from CJIS at the charge level for all youth released from a residential Level IV or V program from July 1, 1994 through June 30, 2004.
- b. Charges from arresting jurisdictions other than “DE” were excluded, thus deleting charges under municipal ordinances.
- c. Charges for Title 21 offenses not related to driving under the influence or the theft of a motor vehicle were excluded.
- d. Offense Title, Section, Class, and Type citations were verified against the SAC’s law file. Where CJIS statute citations did not match the law file, the citations were corrected. The SAC’s law file matches current state statutes. For example, an offender’s arrest for burglary in the third degree, a class F felony, appeared in CJIS as an unclassified misdemeanor.
- e. Attempted offenses charged under 11 Del.C. § 531 were corrected to the actual statute violated where an appropriate match could be made against the attempted offense’s literal description. For example, 11 Del.C. § 531, attempted theft over \$1,000, was recoded as an arrest for 11 Del.C. § 841, theft over \$1,000 – attempted.
- f. Attempted offenses charged under 11 Del.C. § 531 where the literal description did not reference an actual offense (Attempted attempt to commit a crime) and the NCIC code was not missing, were recoded to the actual statutes using the NCIC code.
- g. Attempted offenses charged under 11 Del.C. § 531 where the literal description did not reference an actual offense (Attempted attempt to commit a crime) and the NCIC code was missing, were recoded to actual statutes through the descriptive information contained in CJIS under the offense’s complaint number.
- h. Attempted offenses charged under 11 Del.C. § 531 where the literal description did not reference an actual offense, the NCIC code was missing and the complaint information did not yield any clues as to the crime committed were resolved within the context of the offender’s arrest patterns and criminal career.
- i. Criminal charges for individual offenders were aggregated at the arrest level, thus providing a collection of all relevant charges by offender and date of arrest, i.e., charges were aggregated into arrest events by date of arrest and SBI number.

Incorrect statute citations on 15,551 charges, or 6.0 percent, were changed to match the SAC law file.

Juvenile Placement Data

Release cohort data was extracted from the data maintained on the DSCYF's Family and Child Tracking System (FACTS), and the SAC's DYRS facility database, for youth released from placements from July 1, 1994, through June 30, 2004. Release cohort data was conflated according to the following protocol:

- a. DFS, CMH, and alternative Level III, IV and V program data was extracted from FACTS on July 12, 2004. The alternative placement information (program name, admission and release dates) was verified against DSCYF fiscal records. If the fiscal records were not found, the placement information was verified through the program's records, when these were available.
- b. The program data were integrated with the SAC's juvenile facility database.
 - Excluded from the dataset were alternative placement records which coincided with a facility placement record, i.e., if a youth was serving time in Ferris but a bed was being saved in an alternative program, only the Ferris record was included in the dataset.
 - For cases where an alternative programs placement spanned over an admission into a secure facility, i.e., a youth was sent to the Stevenson House for a 72 hour administrative hold, the alternative program's placement information was adjusted to reflect the exit from the program and the entry into secure care.
 - For cases where an alternative program placement spanned over another alternative program placement, i.e. a youth's bed was being saved in a program while the youth was being held in a Level IV Snowden Cottage slot, admission and release dates were adjusted to correspond to fiscal records.
 - For cases where fiscal records showed that a youth was transferred, admitted, and/or released, but there was no corresponding record of the transfer in FACTS, a new record was created to reflect this movement.

A total of 2,724 placement records were found to be in error, an alternative residential program data error rate of 19.4 percent, due to discrepancies in admission and/or release dates when compared to fiscal records, missing records, duplication, and offender identification problems.

Secure Placement Episodes

Secure placement episodes comprise a continuous period of time when a youth is not in the community and may include multiple releases from secure residential placements. For example, the typical Ferris School for Boys placement episode includes three uninterrupted placements: (1) admission to the Detention Center, (2) admission to Ferris School, and (3) transition back to the community through Mowlds Cottage.

The cohort data in this study includes releases from secure or institutional out-of home placement episodes, and non-secure Level III placements. Secure placements include DYRS

detention and Level IV and Level V programs which house adjudicated youth in secure settings. Secure placements also include Division of Family Services (DFS) and Child Mental Health (CMH) programs that provide residential services which are classified by DSCYF as crisis bed, mental health; inpatient hospital; inpatient hospital, mental health; residential group care, treatment center; residential Interagency Collaborative Team; residential treatment, mental health; and residential treatment, substance abuse.

From time-to-time a secure DYRS placement will be preceded or followed by a DFS or CMH residential placement. Residential DFS and CMH placements are included in this study for youth that had at least one active DYRS residential placement. Youth without DYRS residential placements are not a part of this study. DFS and CMH placements are included in this study so that the time a youth spends in the community after being released from a secure residential placement episode can be calculated accurately.

Youth in Level III programs are in the community while they attend school, recreational activities, receive vocational training, or attend counseling sessions. Some Level III programs are classified by FACTS as being residential. FACTS' residential classification applies to Level III programs that provide group care, independent living, non-secure detention, and transitional services. These programs are not secure residential programs.

During the study period, 5,237 juveniles were released from 30,464 placements. These 30,464 out-of-home placements can be grouped into 18,726 placement episodes. Thirty-nine percent (7,243) of the placement episodes during the study period were DYRS adjudicated secure placement episodes, the remainder were DFS, CMH, secure detention, or non-secure Level III placement episodes.

Level III, IV and V Recidivism Study Dataset

The analysis file was produced by joining the latest available offender identification (SBI, and demographic information such as name, date of birth, race), arrest history (CJIS) and placement data (DYRS facility and contracted III, IV and V programs). Since the analysis file used for calculating all the statistics in this report was conflated from the latest available information, the statistics presented in this document supersede statistics presented in previous reports. In total, 226,959 arrest charges were identified, verified and matched against 30,464 out-of-home placements to produce the analysis file.

No felony recidivism statistics are presented in this document for pre-trial juvenile detainees. The adjudicated Level V felony recidivism rates presented in this document for juveniles held in detention centers apply to juveniles who were adjudicated and subsequently admitted to a detention center or were held in a detention center for more than 10 days after their adjudication.

Considered as Ferris students, for this analysis, were offenders that spent at least one day in the Ferris School before their transfer to Mowlds Cottage or release to the community.

Considered as Mowlds Cottage youth were juveniles who spent their entire incarceration at Mowlds Cottage before being released to the community.

DYRS/DOC Re-admission Recidivism Dataset

DOC release cohort data was extracted from CJIS, for juveniles that had been released from a DYRS Level V placement from July 1, 1994, through June 30, 2004. DOC release cohort data was conflated according to the following protocol:

- a. DOC detention, Level IV and V admission and release data was extracted from CJIS on , on January 18, 2005.
- c. DOC data were integrated with the SAC's juvenile placement data.
 - Excluded from the DYRS/DOC re-admission recidivism dataset were DOC records where an offender was in the community under supervised custody, direct supervision, pre-trial services, home confinement, assigned to a Probation and Parole institution or to *restitution only*.
 - When an offender had a Central Violation of Probation, Plummer House or Sussex Halfway House Work Release case, and the location file showed that during part of the case the offender had been in a *hard* institution, i.e., Women's Correctional or Delaware Correctional Institution, the location file admission and release data on the hard institution was included in the dataset.
 - Excluded from the dataset were Central Violation of Probation, Plummer House or Sussex Halfway House Work Release cases that were not related to a location file *hard* institution admission/release record.

The re-admission analysis file was produced by joining the latest available offender identification (SBI, and demographic information such as name, date of birth, race), DOC admission history (CJIS) and placement data (DYRS facility and contracted III, IV and V programs).

Appendix

Historical Recidivism Rates

The following appendix contains recidivism rates for programs that have not been active since FY01. The programs are grouped by dispositional level.

Historical Recidivism Rates

Display 29, Level V Historical Program Felony Recidivism Rates

Alternative Rehabilitative Community Felony Recidivism Rates

Time Period	N. Released	Months Since Release			
		6 Months	12 Months	18 Months	24 Months
FY 95	1	0%	0%	0%	100%
FY 96	3	67%	67%	67%	67%
FY 98	3	100%	100%	100%	100%

A description was not available from DYRS for this program.

Corrections Corporation of America, Liberty County, Felony Recidivism Rates

Time Period	N. Released	Months Since Release			
		6 Months	12 Months	18 Months	24 Months
FY 00	15	40%	87%	93%	93%
FY 01	6	33%	83%	83%	83%

Liberty County provides pre-vocational, strict behavioral modification and on-site educational programming for males 12 to 18 years of age.

Gannondale, Secure, Felony Recidivism Rates

Time Period	N. Released	Months Since Release			
		6 Months	12 Months	18 Months	24 Months
FY 96	2	0 %	0 %	50%	50%
FY 97	1	0 %	0 %	0 %	0 %
FY 99	1	0 %	0 %	0 %	0 %
FY 00	1	0 %	0 %	100%	100%
FY 01	1	0 %	0 %	0 %	0 %

Gannondale is a secure program for female offenders.

Rebound, Secure, Felony Recidivism Rates

Time Period	N. Released	Months Since Release			
		6 Months	12 Months	18 Months	24 Months
FY 95	1	0%	0%	0%	0%
FY 96	2	50%	100%	100%	100%

A description was not available from DYRS for this program.

Display 30, Level IV Historical Program Felony Recidivism Rates

Abraxas, Drug Sellers, Felony Recidivism Rates

Time Period	N. Released	Months Since Release			
		6 Months	12 Months	18 Months	24 Months
FY 95	3	33%	67%	67%	100%
FY 96	5	60%	80%	80%	80%

A description was not available from DYRS for this program.

Abraxas, Intensive, Felony Recidivism Rates

Time Period	N. Released	Months Since Release			
		6 Months	12 Months	18 Months	24 Months
FY 95	1	0%	0%	0%	0%

A description was not available from DYRS for this program.

Abraxas, Long Term, Felony Recidivism Rates

Time Period	N. Released	Months Since Release			
		6 Months	12 Months	18 Months	24 Months
FY 95	2	0%	100%	100%	100%
FY 96	8	13%	50%	75%	75%
FY 97	2	50%	100%	100%	100%

A description was not available from DYRS for this program.

Abraxas, Short Term, Felony Recidivism Rates

Time Period	N. Released	Months Since Release			
		6 Months	12 Months	18 Months	24 Months
FY 96	3	33%	33%	67%	67%
FY 99	1	0%	0%	100%	100%

A description was not available from DYRS for this program.

A.R.C., General, Felony Recidivism Rates

Time Period	N. Released	Months Since Release			
		6 Months	12 Months	18 Months	24 Months
FY 95	4	75%	75%	75%	100%
FY 96	15	53%	67%	73%	87%
FY 97	2	0%	0%	0%	50%
FY 98	3	33%	33%	33%	33%

A description was not available from DYRS for this program.

Historical Recidivism Rates

A.R.C., Pre-Release, Felony Recidivism Rates

Time Period	N. Released	Months Since Release			
		6 Months	12 Months	18 Months	24 Months
FY 98	1	100%	100%	100%	100%

A description was not available from DYRS for this program.

A.R.C., Special, Felony Recidivism Rates

Time Period	N. Released	Months Since Release			
		6 Months	12 Months	18 Months	24 Months
FY 95	1	0%	0%	100%	100%

A description was not available from DYRS for this program.

Benedictine School Felony Recidivism Rates

Time Period	N. Released	Months Since Release			
		6 Months	12 Months	18 Months	24 Months
FY 97	1	0%	0%	0%	0%

A description was not available from DYRS for this program.

The Bridge, Short Term, Felony Recidivism Rates

Time Period	N. Released	Months Since Release			
		6 Months	12 Months	18 Months	24 Months
FY 95	8	38%	38%	38%	38%
FY 96	2	50%	50%	50%	50%
FY 98	2	50%	50%	50%	50%
FY 01	1	0%	0%	0%	0%

The Bridge, Short Term, provides alcohol and substance abuse treatment for juveniles between the ages of 14 and 19.

Brown Schools at Shadow Mountain, General, Felony Recidivism Rates

Time Period	N. Released	Months Since Release			
		6 Months	12 Months	18 Months	24 Months
FY 99	1	0%	100%	100%	100%
FY 00	1	0%	0%	0%	0%
FY 01	2	0%	100%	100%	100%

A description was not available from DYRS for this program.

Charter Treatment Felony Recidivism Rates

Time Period	N. Released	Months Since Release			
		6 Months	12 Months	18 Months	24 Months
FY 95	9	44%	56%	56%	56%
FY 96	3	0%	67%	67%	67%

A description was not available from DYRS for this program.

Concern, Treatment Unit, Felony Recidivism Rates

Time Period	N. Released	Months Since Release			
		6 Months	12 Months	18 Months	24 Months
FY 95	2	0%	50%	50%	50%
FY 96	1	0%	0%	0%	0%
FY 97	1	0%	100%	100%	100%

A description was not available from DYRS for this program.

Devereux Felony Recidivism Rates

Time Period	N. Released	Months Since Release			
		6 Months	12 Months	18 Months	24 Months
FY 96	1	100%	100%	100%	100%
FY 97	1	0%	0%	100%	100%
FY 01	1	0%	0%	0%	0%

A description was not available from DYRS for this Department of Education program.

Gannondale, General, Felony Recidivism Rates

Time Period	N. Released	Months Since Release			
		6 Months	12 Months	18 Months	24 Months
FY 95	4	0%	0%	0%	0%
FY 96	3	0%	0%	33%	33%
FY 97	2	0%	0%	0%	0%
FY 98	1	0%	0%	0%	0%
FY 99	2	0%	0%	0%	0%
FY 00	1	0%	0%	100%	100%
FY 01	2	0%	0%	0%	0%

Gannondale provides staff secure educational programs, organized athletic competitions, leisure time activities, arts and crafts, and individual and group counseling.

Historical Recidivism Rates

George Junior Republic, Diagnostic, Felony Recidivism Rates

Time Period	N. Released	Months Since Release			
		6 Months	12 Months	18 Months	24 Months
FY 96	1	0%	0%	100%	100%
FY 01	1	0%	100%	100%	100%

A description was not available from DYRS for this program.

George Junior Republic, Drug and Alcohol, Felony Recidivism Rates

Time Period	N. Released	Months Since Release			
		6 Months	12 Months	18 Months	24 Months
FY 00	1	0%	0%	0%	0%

A description was not available from DYRS for this program.

KidsPeace, Dual Diagnosis Program, Felony Recidivism Rates

Time Period	N. Released	Months Since Release			
		6 Months	12 Months	18 Months	24 Months
FY 99	2	0%	0%	0%	0%

A description was not available from DYRS for this program.

Mille Lacs Academy, Adolescent, Felony Recidivism Rates

Time Period	N. Released	Months Since Release			
		6 Months	12 Months	18 Months	24 Months
FY 95	5	20%	40%	60%	60%
FY 96	6	67%	67%	67%	67%
FY 97	3	67%	67%	67%	67%
FY 98	1	100%	100%	100%	100%

A description was not available from DYRS for this program.

Mille Lacs Academy, Early Adolescent, Felony Recidivism Rates

Time Period	N. Released	Months Since Release			
		6 Months	12 Months	18 Months	24 Months
FY 97	1	0%	0%	0%	0%

A description was not available from DYRS for this program.

National Center Institute and Alternatives Felony Recidivism Rates

Time Period	N. Released	Months Since Release			
		6 Months	12 Months	18 Months	24 Months
FY 96	1	0%	0%	0%	100%
FY 99	1	0%	0%	0%	0%

A description was not available from DYRS for this program.

New Hope Treatment Centers, Crisis Program Felony Recidivism Rates

Time Period	N. Released	Months Since Release			
		6 Months	12 Months	18 Months	24 Months
FY 00	1	100%	100%	100%	100%

New Hope Treatment Centers' Crisis Program provides psychiatric crisis stabilization services to emotionally disturbed children and adolescents 9 to 18 years of age.

Pathways Felony Recidivism Rates

Time Period	N. Released	Months Since Release			
		6 Months	12 Months	18 Months	24 Months
FY 98	7	43%	71%	86%	100%
FY 99	2	0%	0%	50%	50%
FY 00	1	0%	0%	0%	0%

Pathways provides substance abuse counseling, individual and group therapy for juveniles between the ages of 12 and 19.

Psychotherapeutic Children's Services,
Transitional Living Program, Felony Recidivism Rates

Time Period	N. Released	Months Since Release			
		6 Months	12 Months	18 Months	24 Months
FY 95	12	42%	50%	58%	58%
FY 96	13	31%	46%	0%	0%
FY 97	12	33%	42%	58%	58%
FY 98	16	25%	50%	69%	75%
FY 99	1	0%	0%	0%	0%
FY 01	2	0%	50%	50%	50%

A description was not available from DYRS for this program.

Historical Recidivism Rates

Renewal Center Felony Recidivism Rates

Time Period	N. Released	Months Since Release			
		6 Months	12 Months	18 Months	24 Months
FY 01	1	0%	0%	0%	100%

Renewal Center provides residential treatment services for offenders diagnosed with Psychoactive Substance Use Disorder.

Stetson School Felony Recidivism Rates

Time Period	N. Released	Months Since Release			
		6 Months	12 Months	18 Months	24 Months
FY 98	1	0%	0%	100%	100%
FY 99	1	0%	0%	0%	0%
FY 00	1	0%	0%	0%	100%

A description was not available from DYRS for this program.

Tarkio, General, Felony Recidivism Rates

Time Period	N. Released	Months Since Release			
		6 Months	12 Months	18 Months	24 Months
FY 96	13	38%	54%	69%	69%
FY 97	15	13%	40%	60%	67%
FY 98	11	27%	45%	91%	91%
FY 99	2	50%	50%	50%	100%

A description was not available from DYRS for this program.

Tarkio Academy, Sex Offender, Felony Recidivism Rates

Time Period	N. Released	Months Since Release			
		6 Months	12 Months	18 Months	24 Months
FY 97	3	33%	33%	33%	33%
FY 98	3	0%	33%	67%	67%
FY 99	4	0%	0%	0%	0%

A description was not available from DYRS for this program.

The Terraces, Long Term, Felony Recidivism Rates

Time Period	N. Released	Months Since Release			
		6 Months	12 Months	18 Months	24 Months
FY 96	1	0%	0%	0%	0%
FY 97	23	17%	43%	57%	70%
FY 98	3	67%	67%	100%	100%

A description was not available from DYRS for this program.

The Terraces, Short Term, Felony Recidivism Rates

Time Period	N. Released	Months Since Release			
		6 Months	12 Months	18 Months	24 Months
FY 97	14	21%	57%	57%	71%
FY 98	4	50%	50%	75%	75%

A description was not available from DYRS for this program.

Timber Ridge Felony Recidivism Rates

Time Period	N. Released	Months Since Release			
		6 Months	12 Months	18 Months	24 Months
FY 98	1	0%	0%	0%	0%

A description was not available from DYRS for this Department of Education program.

Today Inc., Re-Entry, Felony Recidivism Rates

Time Period	N. Released	Months Since Release			
		6 Months	12 Months	18 Months	24 Months
FY 95	3	33%	33%	33%	33%

A description was not available from DYRS for this program.

Victor Cullen Felony Recidivism Rates

Time Period	N. Released	Months Since Release			
		6 Months	12 Months	18 Months	24 Months
FY 95	6	33%	67%	67%	67%
FY 96	4	0%	25%	50%	75%

A description was not available from DYRS for this program.

The Woods Felony Recidivism Rates

Time Period	N. Released	Months Since Release			
		6 Months	12 Months	18 Months	24 Months
FY 99	1	0%	0%	100%	100%
FY 01	1	0%	0%	0%	0%

A description was not available from DYRS for this Department of Education program.

Historical Recidivism Rates

Display 31, Level III Historical Program Felony Recidivism Rates

A.R.C., Foster Care, Felony Recidivism Rates

Time Period	N. Released	Months Since Release			
		6 Months	12 Months	18 Months	24 Months
FY 96	2	50%	50%	50%	50%
FY 97	1	100%	100%	100%	100%
FY 98	1	0%	0%	0%	0%

A description was not available from DYRS for this program.

Brown Schools at Shadow Mountain, Foster Care, Felony Recidivism Rates

Time Period	N. Released	Months Since Release			
		6 Months	12 Months	18 Months	24 Months
FY 00	1	0%	0%	100%	100%
FY 01	1	0%	100%	100%	100%

A description was not available from DYRS for this program.

Catholic Charities Felony Recidivism Rates

Time Period	N. Released	Months Since Release			
		6 Months	12 Months	18 Months	24 Months
FY 96	4	50%	75%	75%	75%
FY 97	4	0%	0%	0%	0%
FY 98	4	0%	25%	25%	50%
FY 99	1	100%	100%	100%	100%

A description was not available from DYRS for this program.

Children's Choice Felony Recidivism Rates

Time Period	N. Released	Months Since Release			
		6 Months	12 Months	18 Months	24 Months
FY 97	3	0%	0%	0%	0%

A description was not available from DYRS for this program.

Concern, Foster Care, Felony Recidivism Rates

Time Period	N. Released	Months Since Release			
		6 Months	12 Months	18 Months	24 Months
FY 95	3	67%	100%	100%	100%
FY 96	2	0%	50%	50%	50%
FY 97	1	100%	100%	100%	100%

A description was not available from DYRS for this program.

Division of Family Services, Foster Care, Felony Recidivism Rates

Time Period	N. Released	Months Since Release			
		6 Months	12 Months	18 Months	24 Months
FY 97	1	0%	0%	0%	0%
FY 98	2	0%	0%	0%	0%
FY 99	1	0%	0%	0%	0%

A description was not available from DYRS for this program.

Diversified Treatment Alternatives, Foster Care, Felony Recidivism Rates

Time Period	N. Released	Months Since Release			
		6 Months	12 Months	18 Months	24 Months
FY 98	2	0%	0%	100%	100%

Diversified Treatment Alternatives provides temporary and long-term foster care for sexual offenders that successfully completed Diversified Treatment Alternatives' Level IV program.

Father Flannigan's Boys Home Felony Recidivism Rates

Time Period	N. Released	Months Since Release			
		6 Months	12 Months	18 Months	24 Months
FY 98	1	0%	0%	0%	0%

A description was not available from DYRS for this program.

Home of Divine Providence Felony Recidivism Rates

Time Period	N. Released	Months Since Release			
		6 Months	12 Months	18 Months	24 Months
FY 00	1	0%	0%	0%	0%

A description was not available from DYRS for this program.

Impact, Foster Care, Felony Recidivism Rates

Time Period	N. Released	Months Since Release			
		6 Months	12 Months	18 Months	24 Months
FY 98	1	0%	0%	0%	0%
FY 99	1	0%	0%	0%	0%

A description was not available from DYRS for this program.

Historical Recidivism Rates

Impact, Independent Living, Felony Recidivism Rates

Time Period	N. Released	Months Since Release			
		6 Months	12 Months	18 Months	24 Months
FY 96	1	0%	0%	0%	0%

A description was not available from DYRS for this program.

Learning Experiences, Inc., Felony Recidivism Rates

Time Period	N. Released	Months Since Release			
		6 Months	12 Months	18 Months	24 Months
FY 96	1	0%	0%	0%	0%

A description was not available from DYRS for this program.

MR Respite Care Felony Recidivism Rates

Time Period	N. Released	Months Since Release			
		6 Months	12 Months	18 Months	24 Months
FY 98	1	0%	0%	0%	0%

A description was not available from DYRS for this program.

Northeast Treatment Center Felony Recidivism Rates

Time Period	N. Released	Months Since Release			
		6 Months	12 Months	18 Months	24 Months
FY 97	1	0%	0%	0%	0%
FY 98	1	100%	100%	100%	100%

A description was not available from DYRS for this program.

Seton Villa Felony Recidivism Rates

Time Period	N. Released	Months Since Release			
		6 Months	12 Months	18 Months	24 Months
FY 98	1	0%	0%	0%	0%
FY 99	2	0%	0%	0%	0%

A description was not available from DYRS for this program.

Sisters Reaching for Excellence Felony Recidivism Rates

Time Period	N. Released	Months Since Release			
		6 Months	12 Months	18 Months	24 Months
FY 99	5	0%	40%	40%	40%
FY 00	1	0%	0%	0%	0%

A description was not available from DYRS for this program.

Stepping Stones Felony Recidivism Rates

Time Period	N. Released	Months Since Release			
		6 Months	12 Months	18 Months	24 Months
FY 95	5	20%	20%	20%	20%
FY 96	5	60%	60%	60%	60%
FY 97	13	0%	15%	31%	31%
FY 98	6	33%	50%	50%	50%
FY 99	10	0%	30%	30%	40%
FY 00	3	67%	67%	67%	100%

Stepping Stones provides transitional independent living programming for adjudicated males 16 to 18 years of age.

Intentionally Blank