



**State of Delaware Executive Department  
Office of Management and Budget**

January 14, 2011

To: SENTAC

Fr: Philisa J. Weidlein-Crist and Jack O'Connell

Subj: Department of Corrections Population Patterns 2000 to December 2010

Attached are four graphs providing a summary of the Department of Correction Bureau of Prison's population based on the daily population reports for the period of January 2000 to December 2010. Also, on the second page of this report is a table that provides a detailed quarterly breakout of DOC facility types by offender status since the 2<sup>nd</sup> quarter of 2008 which is obtained through examination of Department of Correction (DOC) offender status levels and holds. Offender status types include offenders sentenced for Level V Prison (offender serving more than one year), Level V Jail (offenders serving one year or less), Level IV offenders, Level III offenders, and detainees.

Graph 1 shows that DOC's Daily Population counts between January 2000 and September 2010 for detention, Level V and Level IV facilities populations have increased from about 6,100 to 6,600. The peak daily population was September 2007 when the population reached about 7,375. Since then, the population has declined, reaching its lowest in December 2009 (6,561), but has started to increase during the second half of 2010, but has since gone down (December 31, 2010, 6,356). Currently, the population is the lowest it has been since January 2002.

Graph 2 provides a year-to-year overlay for the total DOC population. It shows that there was a long period of slow population growth between 2002 and 2005 when the population remained relatively stable, and in 2003, the population actually decreased. In the second half of 2005, a separation began and in 2006 and 2007 a period of accelerated growth became evident. In 2006 and 2007, the population peaked at about 7,250 and 7,375, respectively, in the fourth quarter of each year. Now, in 2010, the average population is closer to 6,350.

Graph 3 shows the same type of year-to-year overlay but for only the detention and Level V major institutions beds. On December 31, 2010, this population was 5,296. This population, while smaller, shows a very similar pattern seen in Graph 2.

Graph 4 shows that the Level IV work releases and VOP Centers have remained tightly bunched except when the population hit it's highest at 1,350 in March 2009. The Level IV facility population has decreased steadily since 2009, noting that there are approximately 100 to 150 less individuals than there were last year at this time.



**Budget Development, Planning and Administration  
Statistical Analysis Center**

410 Federal Street • Suite 6 • Dover, DE 19901  
Phone: (302) 739-4626 • Fax: (302) 739-4630 • [www.omb.delaware.gov](http://www.omb.delaware.gov)

**DOC Facility Type by Offender Status Type by Quarter<sup>1</sup>**

		Offender Status					Totals
		Level V Prison <sup>2</sup>	Level V Jail <sup>3</sup>	Level IV <sup>4</sup>	Level III <sup>4</sup>	Detention <sup>5</sup>	
Prisons <sup>6</sup>	2nd Quarter 2008 (6/30/08)	3,723	555	48	5	1,537	5,868
	3rd Quarter 2008 (9/30/08)	3,739	597	42	2	1,565	5,945
	4th Quarter 2008 (12/31/08)	3,642	535	56	7	1,398	5,638
	1st Quarter 2009 (3/31/09)	3,642	588	57	3	1,335	5,625
	2nd Quarter 2009 (6/30/09)	3,659	558	68	4	1,335	5,624
	3rd Quarter 2009 (9/30/09)	3,616	507	47	5	1,540	5,715
	4th Quarter 2009 (12/31/09)	3,578	480	54	5	1,323	5,440
	1st Quarter 2010 (3/31/10)	3,637	478	48	2	1,182	5,347
	2nd Quarter 2010 (6/30/10)	3,589	468	43	6	1,355	5,461
	3rd Quarter 2009 (9/30/10)	3,636	533	45	13	1,332	5,559
	4th Quarter 2009 (12/31/10)	3,632	478	69	8	1,076	5,263
Community Corrections Facilities <sup>7</sup>	2nd Quarter 2008 (6/30/08)	136	64	1,027	8	63	1,298
	3rd Quarter 2008 (9/30/08)	150	64	999	2	64	1,279
	4th Quarter 2008 (12/31/08)	147	68	976	1	70	1,262
	1st Quarter 2009 (3/31/09)	155	77	965	3	96	1,296
	2nd Quarter 2009 (6/30/09)	147	69	908	1	78	1,203
	3rd Quarter 2009 (9/30/09)	126	51	882	2	84	1,145
	4th Quarter 2009 (12/31/09)	134	66	793	2	108	1,103
	1st Quarter 2010 (3/31/10)	156	68	858	1	87	1,170
	2nd Quarter 2010 (6/30/10)	140	57	813	2	74	1,086
	3rd Quarter 2009 (9/30/10)	135	68	859	6	63	1,131
	4th Quarter 2009 (12/31/10)	127	61	791	1	70	1,050
Delaware State Hospital <sup>8</sup> and Interstate Compact <sup>9</sup>	2nd Quarter 2008 (6/30/08)	39	1	0	1	18	59
	3rd Quarter 2008 (9/30/08)	40	0	1	0	13	54
	4th Quarter 2008 (12/31/08)	41	2	0	0	11	54
	1st Quarter 2009 (3/31/09)	38	1	0	1	15	55
	2nd Quarter 2009 (6/30/09)	40	2	0	0	14	56
	3rd Quarter 2009 (9/30/09)	37	2	1	0	15	55
	4th Quarter 2009 (12/31/09)	39	1	0	0	19	59
	1st Quarter 2010 (3/31/10)	38	0	0	0	21	59
	2nd Quarter 2010 (6/30/10)	35	2	0	0	19	56
	3rd Quarter 2009 (9/30/10)	32	2	1	0	21	56
	4th Quarter 2009 (12/31/10)	31	1	0	0	21	53
Totals	2nd Quarter 2008 (6/30/08)	3,898	620	1,075	14	1,618	7,225
	3rd Quarter 2008 (9/30/08)	3,929	661	1,042	4	1,642	7,278
	4th Quarter 2008 (12/31/08)	3,830	605	1,032	8	1,479	6,954
	1st Quarter 2009 (3/31/09)	3,835	666	1,022	7	1,446	6,976
	2nd Quarter 2009 (6/30/09)	3,846	629	976	5	1,427	6,883
	3rd Quarter 2009 (9/30/09)	3,779	560	930	7	1,639	6,915
	4th Quarter 2009 (12/31/09)	3,751	547	847	7	1,450	6,602
	1st Quarter 2010 (3/31/10)	3,831	546	906	3	1,290	6,576
	2nd Quarter 2010 (6/30/10)	3,764	527	856	8	1,448	6,603
	3rd Quarter 2009 (9/30/10)	3,803	603	905	19	1,416	6,746

<sup>1</sup> This chart is based off of information obtained through an examination of DOC offender records. The information relates to the offenders current sentence status, level and location. This information is not obtained by DOC Population Counts and should not be treated as such.

<sup>2</sup> Level V Prison refers to offenders sentenced to greater than one year.

<sup>3</sup> Level V Jail refers to offenders sentenced to one year or less, or offenders serving an “indefinite” sentence such as Boot Camp.

<sup>4</sup> Offenders sentenced to probation Levels IV and III may be held with a court order while awaiting a probation program.

<sup>5</sup> Detention refers to those offenders who are held in pre-sentence custody.

<sup>6</sup> Prison Facilities include: Vaughn Correctional Center, Howard Young Correctional Institute, Sussex Correctional Institute and Baylor Women’s Correctional Institute and WEBB (as of July 1, 2008, WEBB began reporting as a Community Corrections Facility).

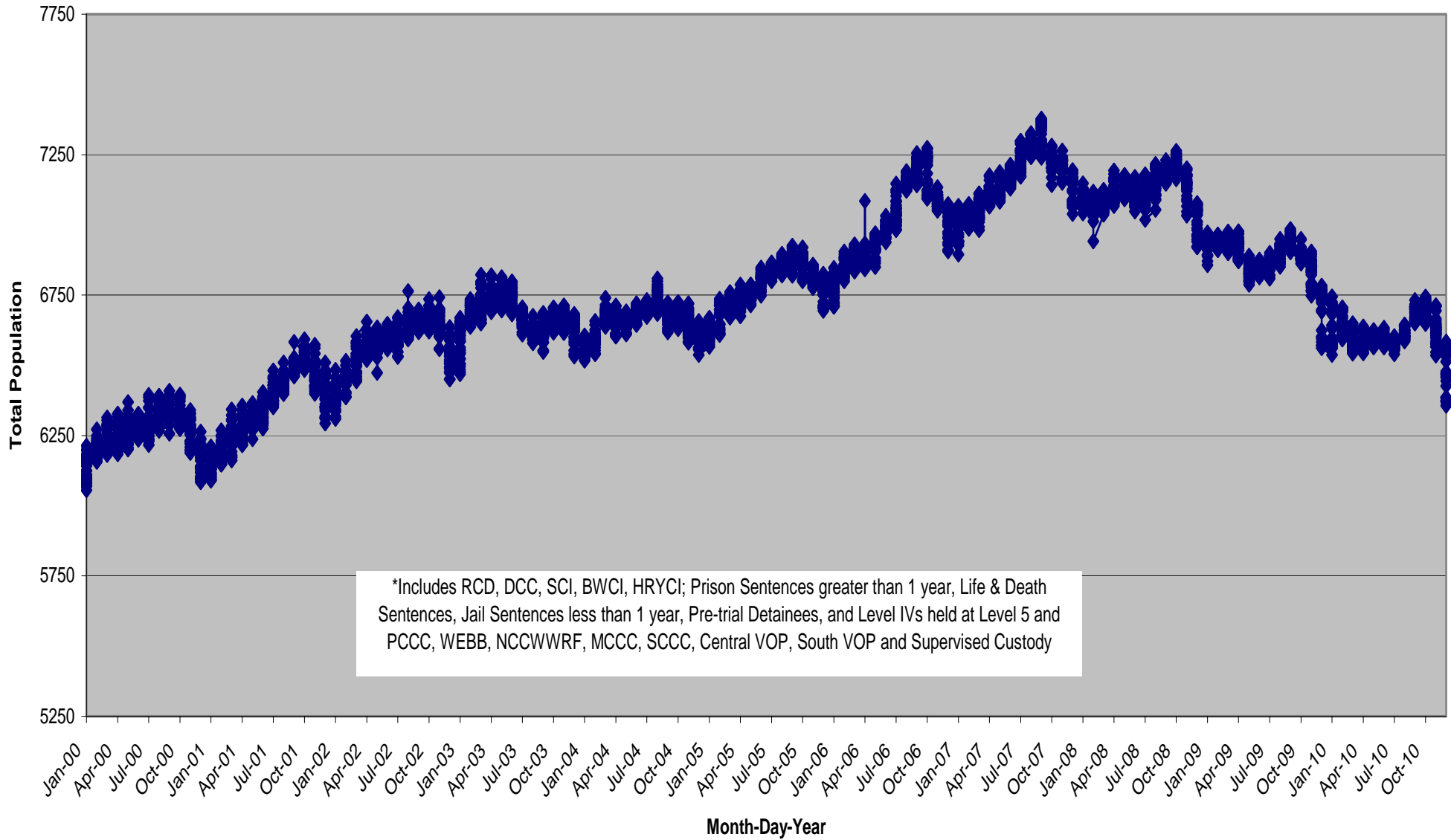
<sup>7</sup> Community Corrections Facilities include PCCC, NCCWWRF, MCCC, Central VOP, South VOP, and SCCC and WEBB (as of July 1, 2008, WEBB began reporting as a Community Corrections Facility). Community Corrections Facilities house Level IV offenders, work release and those assigned to addiction treatment. Community Corrections Facilities in specific locations also house Violation of Probation offenders, including some in detention status. Some Level V offenders may also be housed at Level IV facilities.

<sup>8</sup> Delaware State Hospital houses pre-sentenced and sentenced offenders with psychiatric issues, or those awaiting psychiatric evaluations.

<sup>9</sup> Compact Cases refers to offenders housed per interstate compact agreements.

	4th Quarter 2009 (12/31/10)	3,790	540	860	9	1,167	6,366
--	-----------------------------	-------	-----	-----	---	-------	-------

**Graph 1**  
**Detention, Level V and Level IV\***  
**Total Major Institutions and Community Corrections Facilities Population Jan 00-Dec 10\*\***

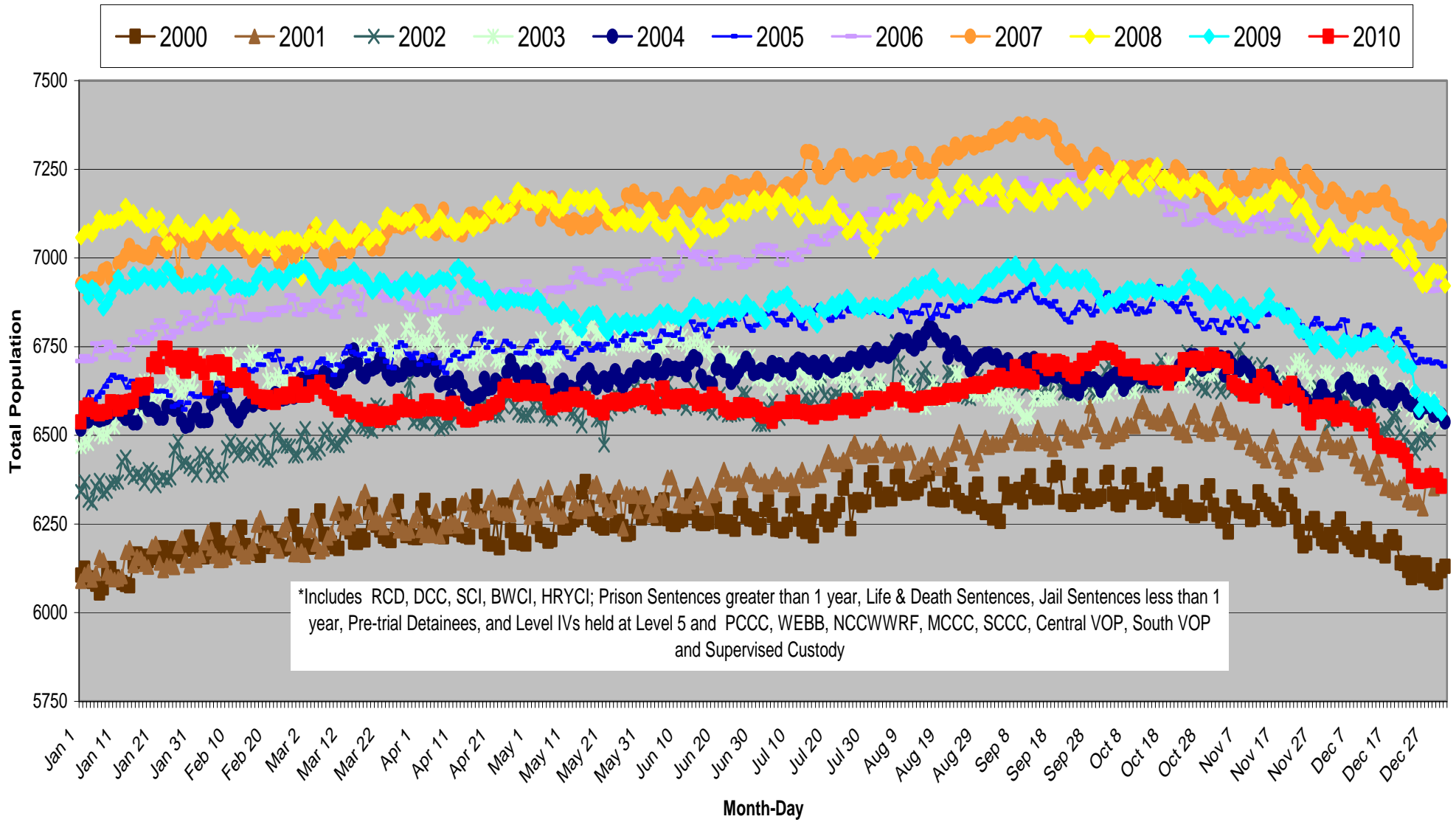


\*\*Compiled using information reported on DOC Daily Population Sheets.

Graph 2

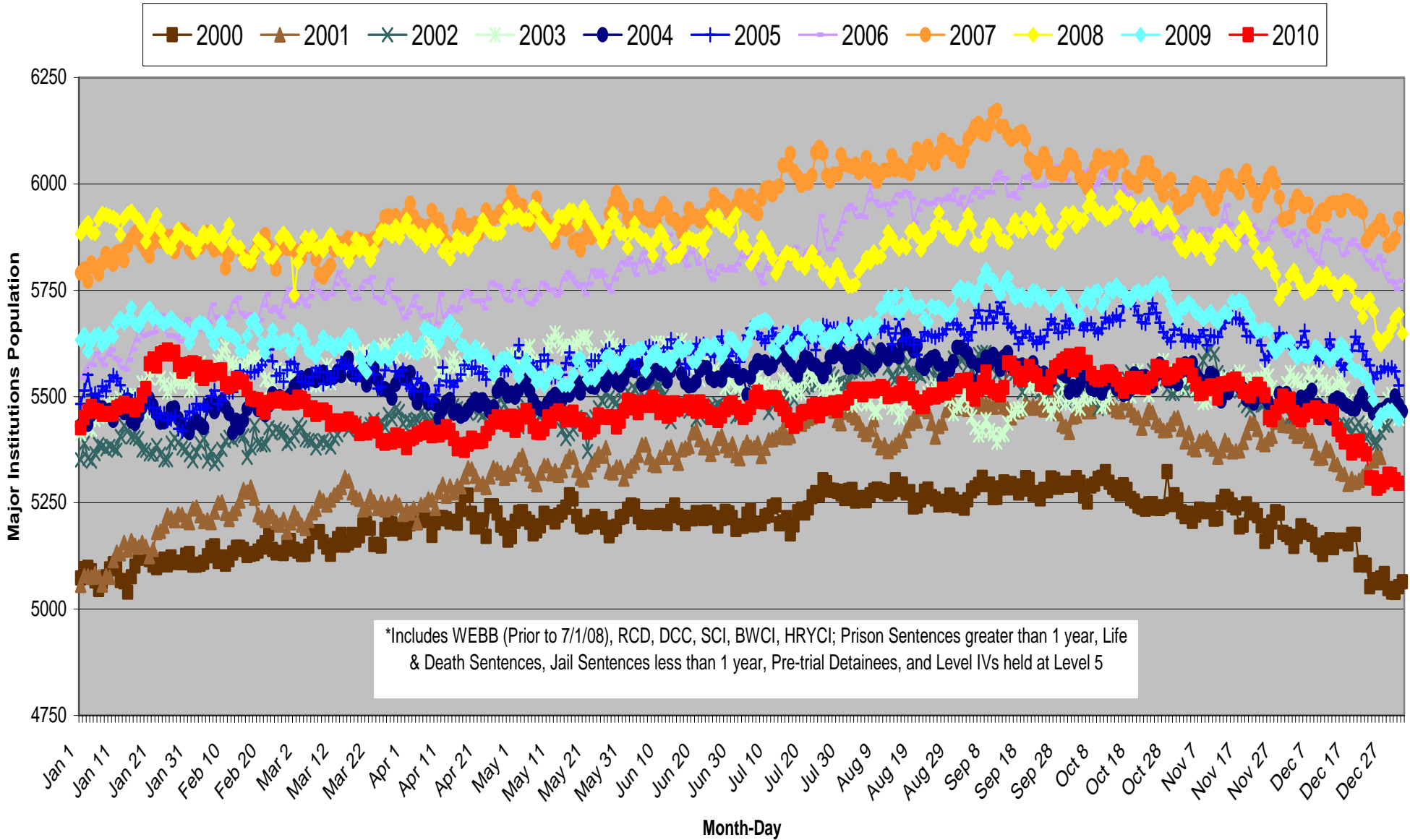
Detention, Level V and Level IV\*

Total Major Institutions and Community Corrections Facilities Total Population by Year 2000-Dec 2010\*\*



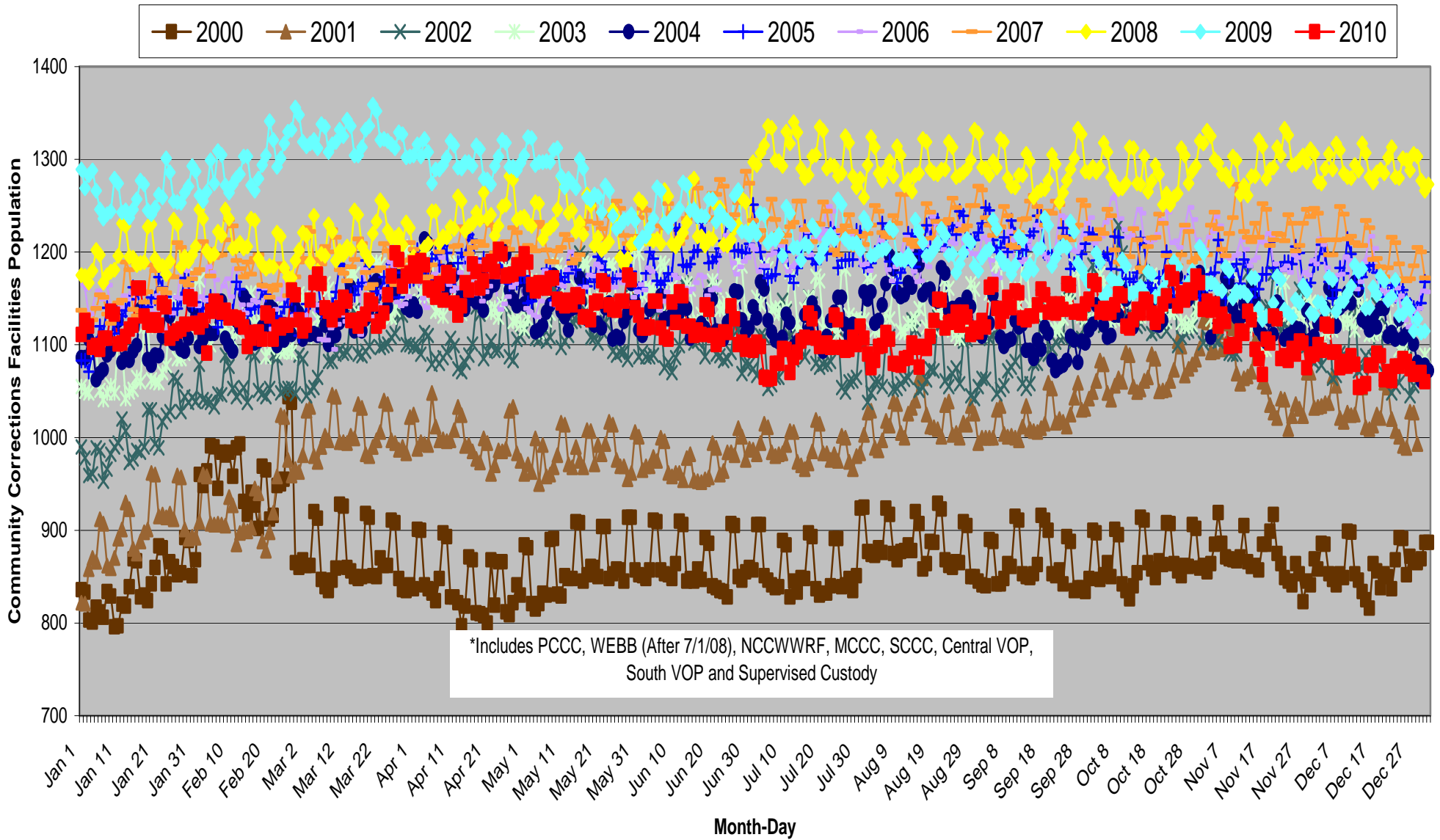
\*\*Compiled using information reported on DOC Daily Population Sheets.

**Graph 3**  
**Detention and Level V (Jail and Prison)\***  
**Total Major Institutions Population by Year 2000-Dec 2010\*\***



\*\*Compiled using information reported on DOC Daily Population Sheets.

**Graph 4**  
**Level IV Work Release, VOP Centers and Supervised Custody\***  
**Total Community Corrections Facilities Population by Year 2000-Dec 2010\*\***



\*\*Compiled using information reported on DOC Daily Population Sheets.